

Foreign vessels on cruise in Montenegro, 2011

In 2011, foreign vessels realised 319 cruises in Montenegro. Total of 187 171 passengers arrived during these cruises.

In comparison with 2010, the number of cruises increased by 1.9%, while the number of passengers on these cruises increased by 31.6%.

By flag of vessels, the structure of foreign vessels on cruise entered internal sea waters of Montenegro in 2011 was the following: Malta (34.8%), Bahamas (24.1%), Panama (9.4%), Belgium (8.8%), Portugal (6.0%), Marshall Islands (5.3%), France (4.7%), Bermuda (2.2%), Greece (1.6%), etc.

Graph 1. Number of cruises and passengers, from 2007 to 2011

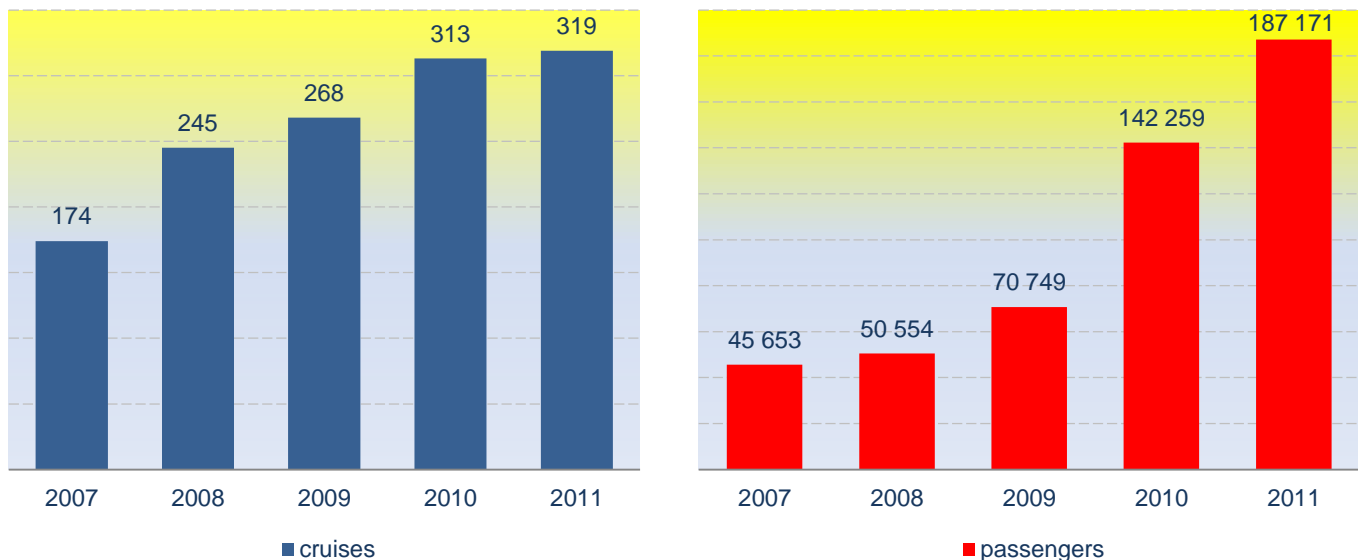


Table 1. Cruises of foreign vessels in Montenegro, 2011

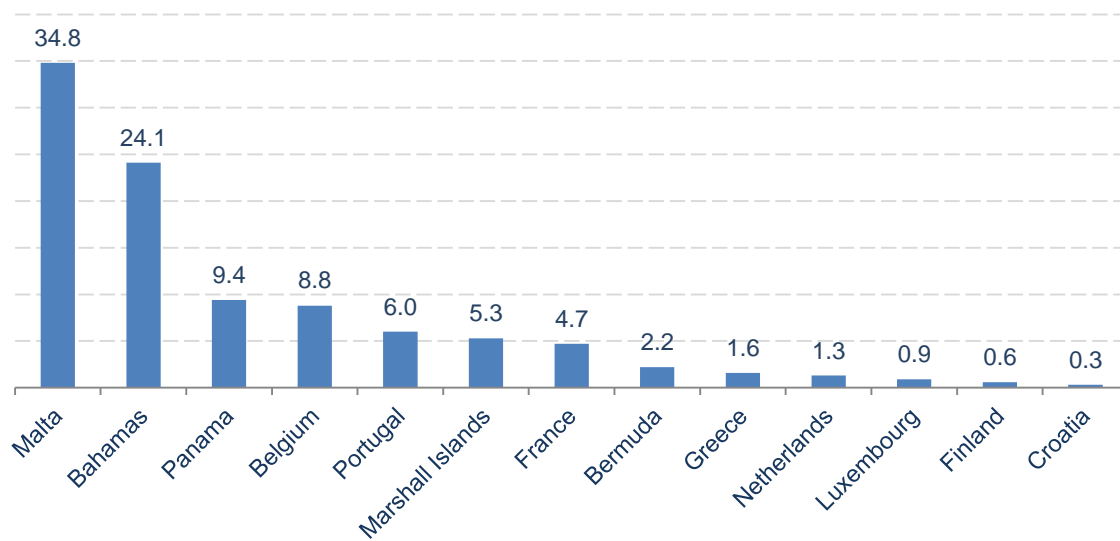
	Number of cruises and passengers		Indices
	2011	2010	$\frac{2011}{2010}$
Cruises	319	313	101.9
Passengers	187 171	142 259	131.6

	Cruises	Passengers	Structure
	(1)	(2)	(1) in %
Total	319	187 171	100.0

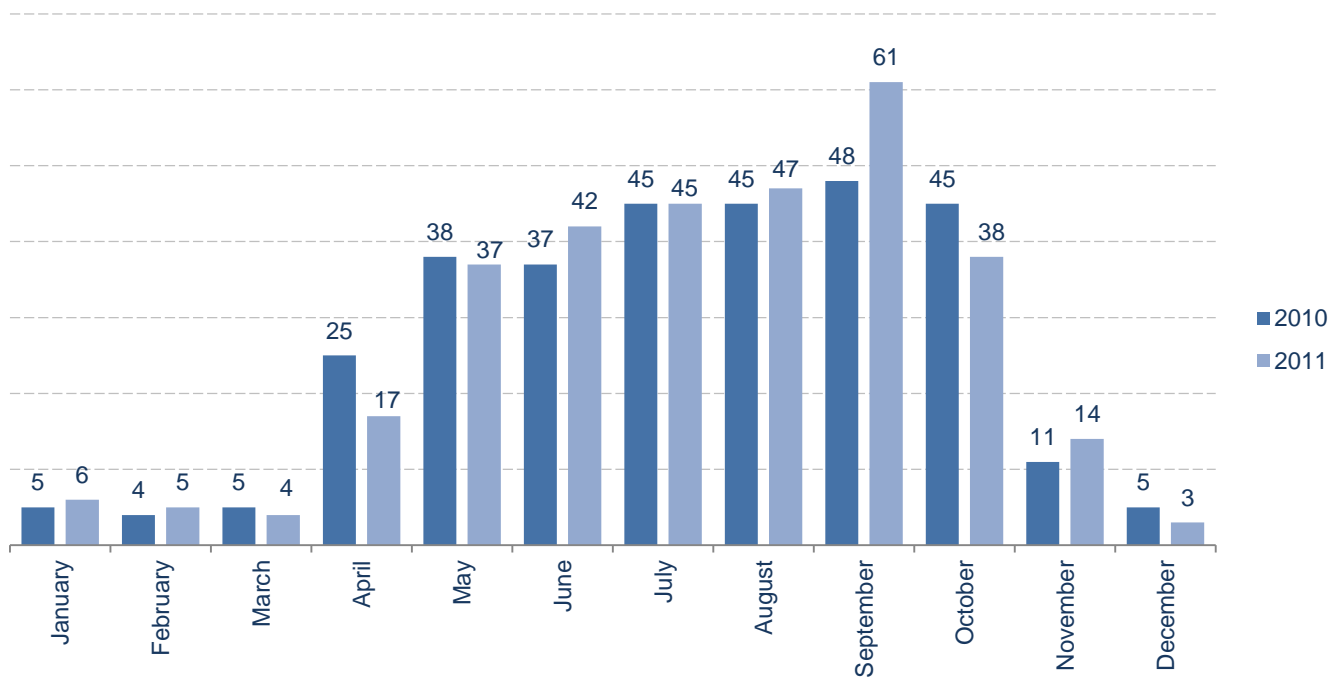
Flag

Bahamas	77	40 614	24.1
Belgium	28	4 180	8.8
Bermuda	7	8 109	2.2
Croatia	1	20	0.3
Finland	2	658	0.6
France	15	3 235	4.7
Greece	5	189	1.6
Luxembourg	3	379	0.9
Malta	111	56 736	34.8
Netherlands	4	4 594	1.3
Marshall Islands	17	10 215	5.3
Panama	30	52 586	9.4
Portugal	19	5 656	6.0

Graph 2. Structure of foreign vessels on cruise by flag under which they arrive, 2011



Graph 3. Cruises of foreign vessels by months in 2010 and 2011



METHODOLOGICAL NOTES

Survey Report on Arrival of Foreign Vessels on Cruise aims at obtaining the data on number of cruises realised in the internal sea waters of Montenegro, as well as number of passengers arrived in Montenegro during these cruises. The data collection is done by reporting method (TU-19 form). Reporting units are seaports. The report is filled for the first entry of vessel in the internal sea waters of Montenegro.

Cruise is a touristic journey which lasts for several days according to a specified itinerary (elaborated plan of a journey) for cruises.

Number of cruise passengers is a number of passengers on vessel excluding the crew. A passenger is any person who arrived by ship irrespective of age, providing that he/she is not a crew member.

The data referred to previous years can be obtained here:
<http://monstat.org/eng/page.php?id=454&pageid=43>

Published and printed by Statistical Office of Montenegro (MONSTAT)
81000 Podgorica, IV Proleterske 2, Phone (+382) 20 230 811, Fax (+382) 20 230 814

Release prepared by:

Ivana BOSKOVIC

Phone +382 20 230 837
contact@monstat.org