

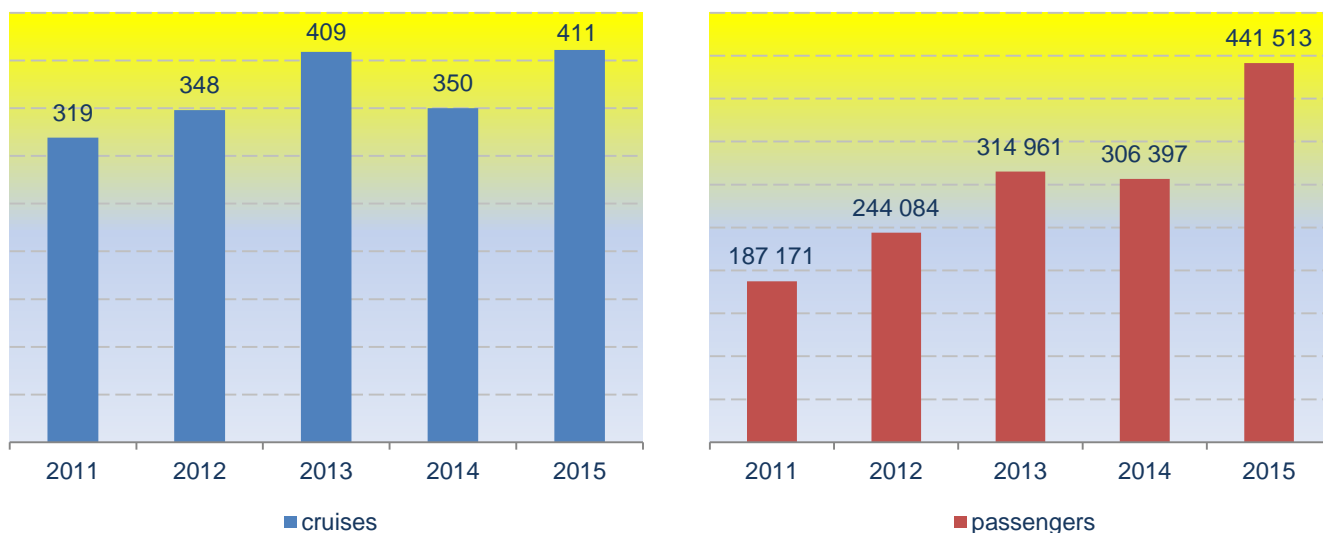
## Foreign vessels on cruise in Montenegro 2015

*In 2015, foreign vessels realised 411 cruises in Montenegro. Total of 441 513 passengers arrived during these cruises.*

*In comparison with 2014, the number of cruises increased by 17.4%, while the number of passengers on these cruises increased by 44.1%.*

*By flag of vessels, the structure of foreign vessels on cruise entered internal sea waters of Montenegro in 2015 was the following: Malta (33.6%), Bahamas (24.3%), Italy (8.0%), Panama (7.8%), Belgium (5.4%), Bermuda (5.1%), France (3.9%), Netherlands (3.9%), etc.*

**Graph 1 Number of cruises and passengers**



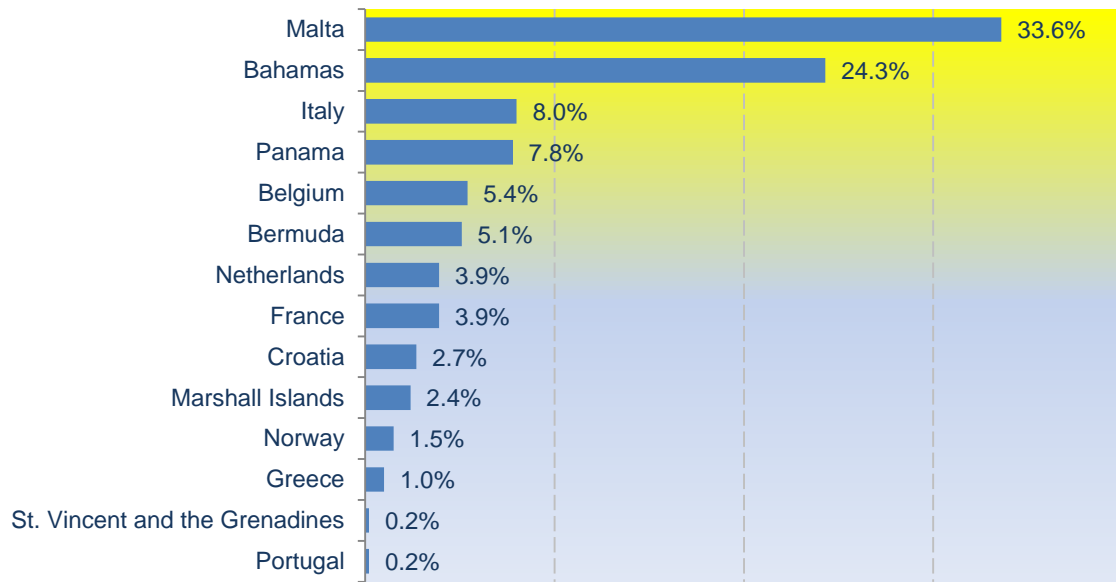
**Table 1 Cruises of foreign vessels in Montenegro, 2015**

	2015	2014	Indices 2015/2014
<b>Cruises</b>	411	350	117.4
<b>Passengers</b>	441 513	306 397	144.1

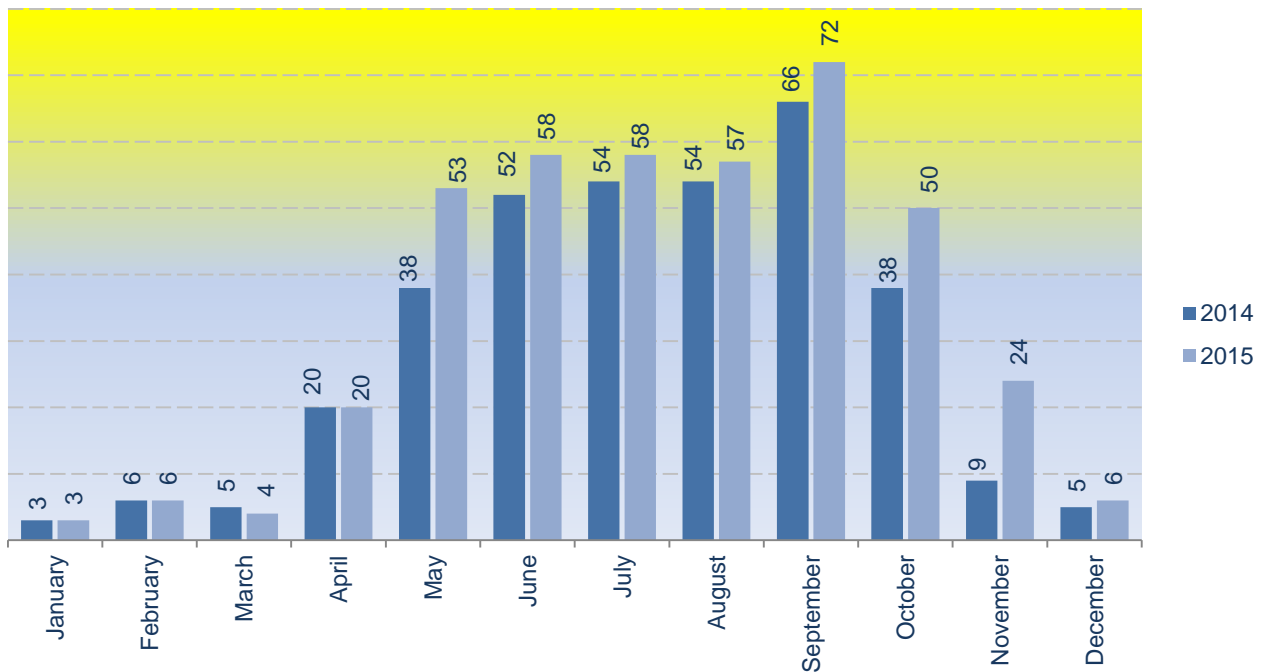
**Table 2 Cruises of foreign vessels in Montenegro, by flag under which they arrive, 2015**

	Cruises	Passengers	Structure
	(1)	(2)	(1) in %
<b>Total</b>	<b>411</b>	<b>441 513</b>	<b>100.0</b>
<b>Flag</b>			
Bahamas	100	79 707	24.3
Belgium	22	3 783	5.4
Bermuda	21	44 018	5.1
Croatia	11	349	2.7
France	16	3 434	3.9
Greece	4	140	1.0
Italy	33	72 569	8.0
Malta	138	100 743	33.6
Netherlands	16	31 756	3.9
Norway	6	5 006	1.5
Marshall Islands	10	12 334	2.4
Panama	32	87 297	7.8
Portugal	1	297	0.2
St. Vincent and Grenadines	1	80	0.2

**Graph 2 Structure of foreign vessels on cruise by flag under which they arrive, 2015**



**Graph 3 Cruises of foreign vessels by months**



## METHODOLOGICAL NOTES

Survey Report on Arrival of Foreign Vessels on Cruise aims at obtaining the data on number of cruises realised in the internal sea waters of Montenegro, as well as number of passengers arrived in Montenegro during these cruises. The data collection is done by reporting method (TU-19 form). Reporting units are seaports. The report is filled for the first entry of vessel in the internal sea waters of Montenegro.

Cruise is a touristic journey which lasts for several days according to a specified itinerary (elaborated plan of a journey) for cruises.

Number of cruise passengers is a number of passengers on vessel excluding the crew. A passenger is any person who arrived by ship irrespective of age providing that he/she is not a crew member.

Published and printed by Statistical Office of Montenegro (MONSTAT)  
81000 Podgorica, IV Proleterske 2, Phone (+382) 20 230 811, Fax (+382) 20 230 814

*Release prepared by:*

**Ivana CIMBALJEVIC and Boris MURATOVIC**

**Phone +382 20 230 837**

*e-mail:* [contact@monstat.org](mailto:contact@monstat.org)