

When using these data
 please indicate the source

Foreign vessels on cruise in Montenegro 2014

In 2014, foreign vessels realised 350 cruises in Montenegro. Total of 306 397 passengers arrived during these cruises.

In comparison with 2013, the number of cruises decreased by 14.4%, while the number of passengers on these cruises decreased by 2.7%.

By flag of vessels, the structure of foreign vessels on cruise entered internal sea waters of Montenegro in 2014 was the following: Malta (40.3%), Bahamas (22.6%), Belgium (6.9%), Bermuda (6.9%), France (4.9%), Greece (4.6%), Netherlands (4.6%), Panama (4.0%), etc.

Graph 1. Number of cruises and passengers

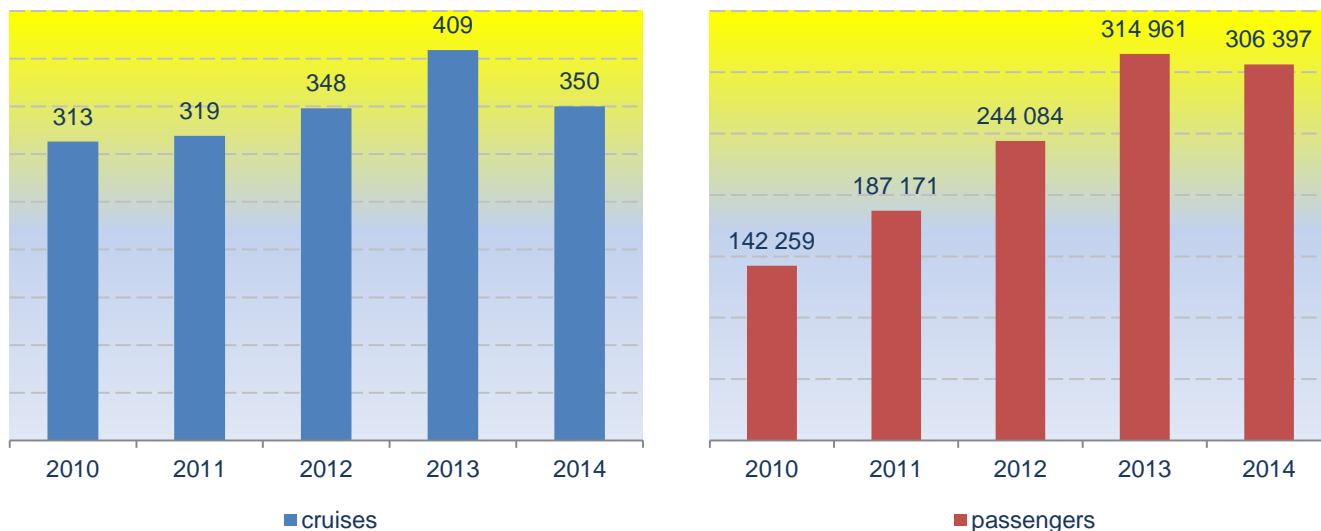


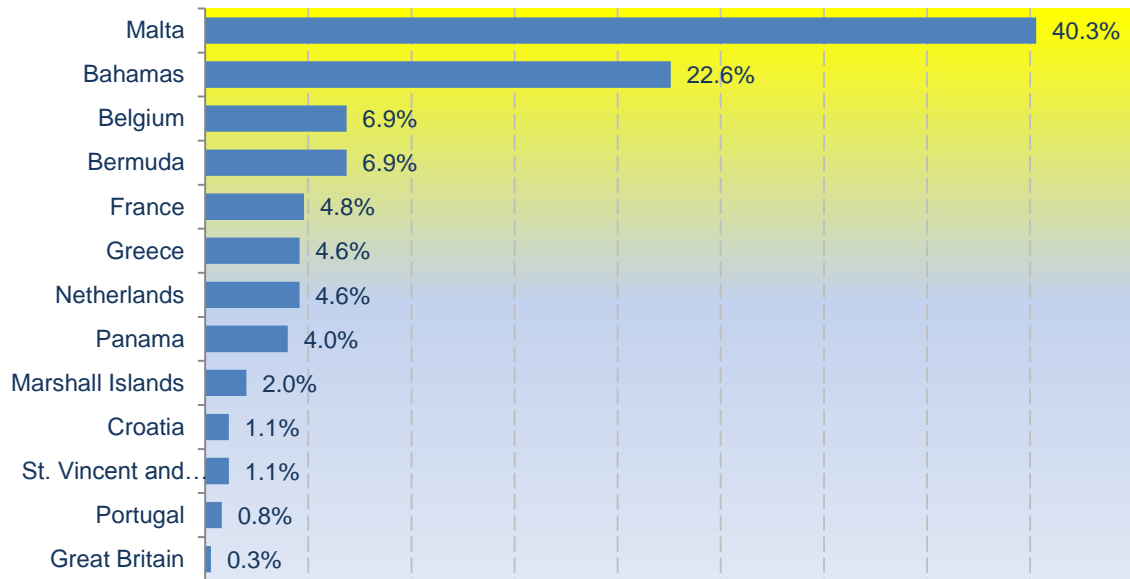
Table 1. Cruises of foreign vessels in Montenegro, 2014

	2014	2013	Indices 2014/2013
Cruises	350	409	85.6
Passengers	306 397	314 961	97.3

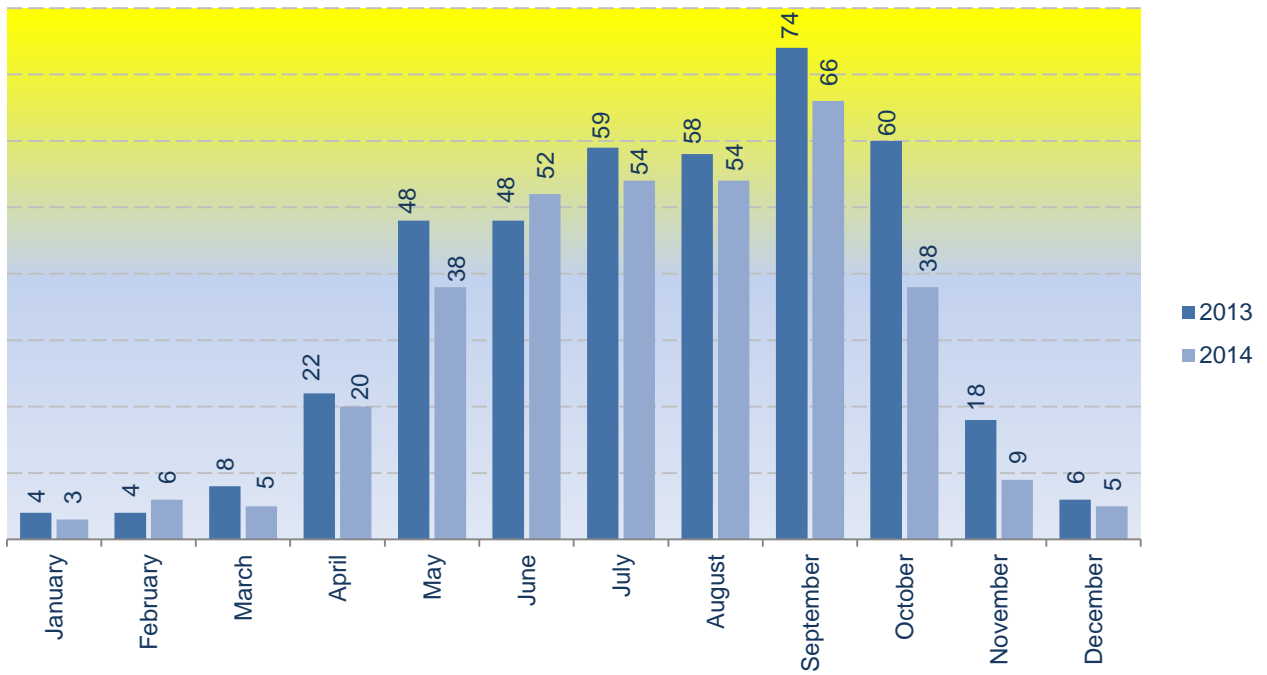
Table 2. Cruises of foreign vessels in Montenegro, by flag under which they arrive, 2014

	Cruises	Passengers	Structure
	(1)	(2)	(1) in %
Total	350	306 397	100.0
Flag			
Bahamas	79	62 962	22.6
Belgium	24	4 000	6.9
Bermuda	24	62 259	6.9
Croatia	4	94	1.1
France	17	2 865	4.8
Greece	16	561	4.6
Malta	141	104 417	40.3
Netherlands	16	30 616	4.6
Marshall Islands	7	6 323	2.0
Panama	14	26 562	4.0
Portugal	3	3 338	0.8
St. Vincent and Grenadines	4	395	1.1
Great Britain	1	2 005	0.3

Graph 2. Structure of foreign vessels on cruise by flag under which they arrive, 2014



Graph 3. Cruises of foreign vessels by months



METHODOLOGICAL NOTES

Survey Report on Arrival of Foreign Vessels on Cruise aims at obtaining the data on number of cruises realised in the internal sea waters of Montenegro, as well as number of passengers arrived in Montenegro during these cruises. The data collection is done by reporting method (TU-19 form). Reporting units are seaports. The report is filled for the first entry of vessel in the internal sea waters of Montenegro.

Cruise is a touristic journey which lasts for several days according to a specified itinerary (elaborated plan of a journey) for cruises.

Number of cruise passengers is a number of passengers on vessel excluding the crew. A passenger is any person who arrived by ship irrespective of age providing that he/she is not a crew member.

Published and printed by Statistical Office of Montenegro (MONSTAT)
81000 Podgorica, IV Proleterske 2, Phone (+382) 20 230 811, Fax (+382) 20 230 814

Release prepared by:

Boris MURATOVIC
Phone +382 20 230 837
e-mail: contact@monstat.org