

Foreign vessels on cruise in Montenegro 2012

In 2012, foreign vessels realised 348 cruises in Montenegro. Total of 244 084 passengers arrived during these cruises.

In comparison with 2011, the number of cruises increased by 9.1%, while the number of passengers on these cruises increased by 30.4%.

By flag of vessels, the structure of foreign vessels on cruise entered internal sea waters of Montenegro in 2012 was the following: Malta (32.5%), Bahamas (22.4%), Italy (8.3%), Panama (7.5%), France (5.5%), Belgium (5.2%), Greece (4.6%), Bermuda (3.7%), Marshall Islands (3.7%), etc.

Graph 1. Number of cruises and passengers

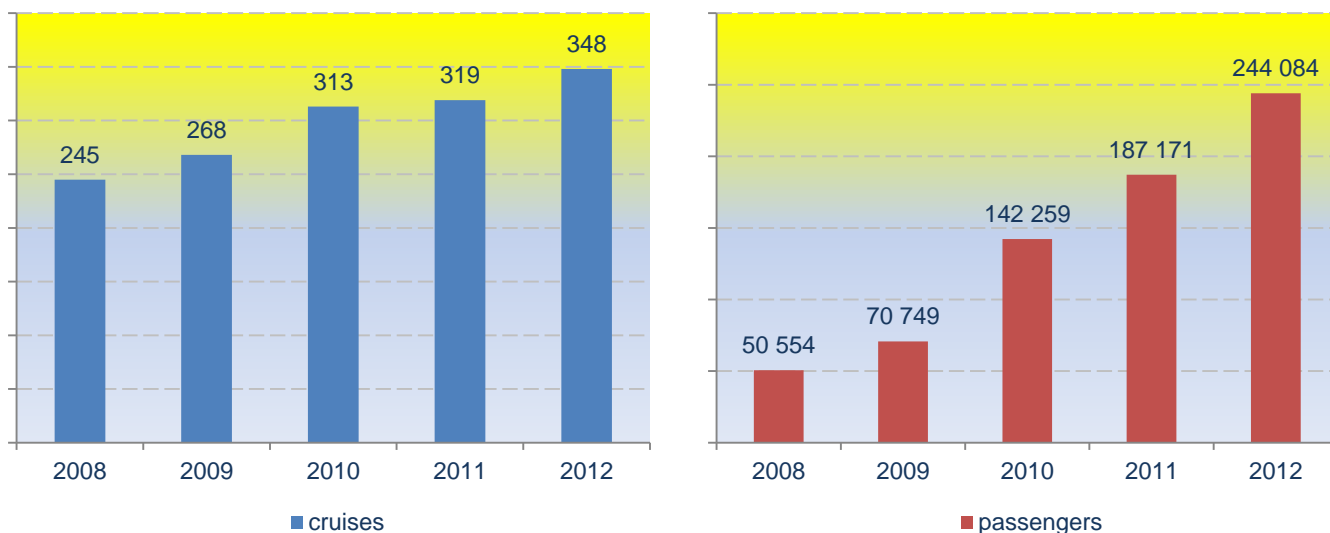


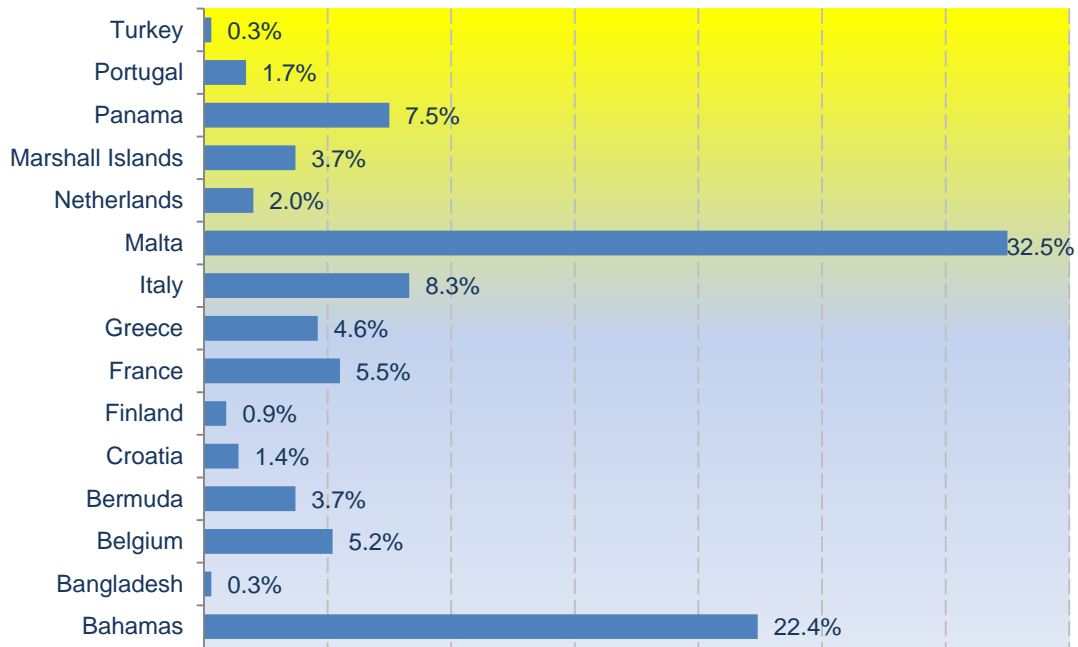
Table 1. Cruises of foreign vessels in Montenegro, 2012

	Number of cruises and passengers		Indices
	2012	2011	<u>2012</u> <u>2011</u>
Cruises	348	319	109.1
Passengers	244 084	187 171	130.4

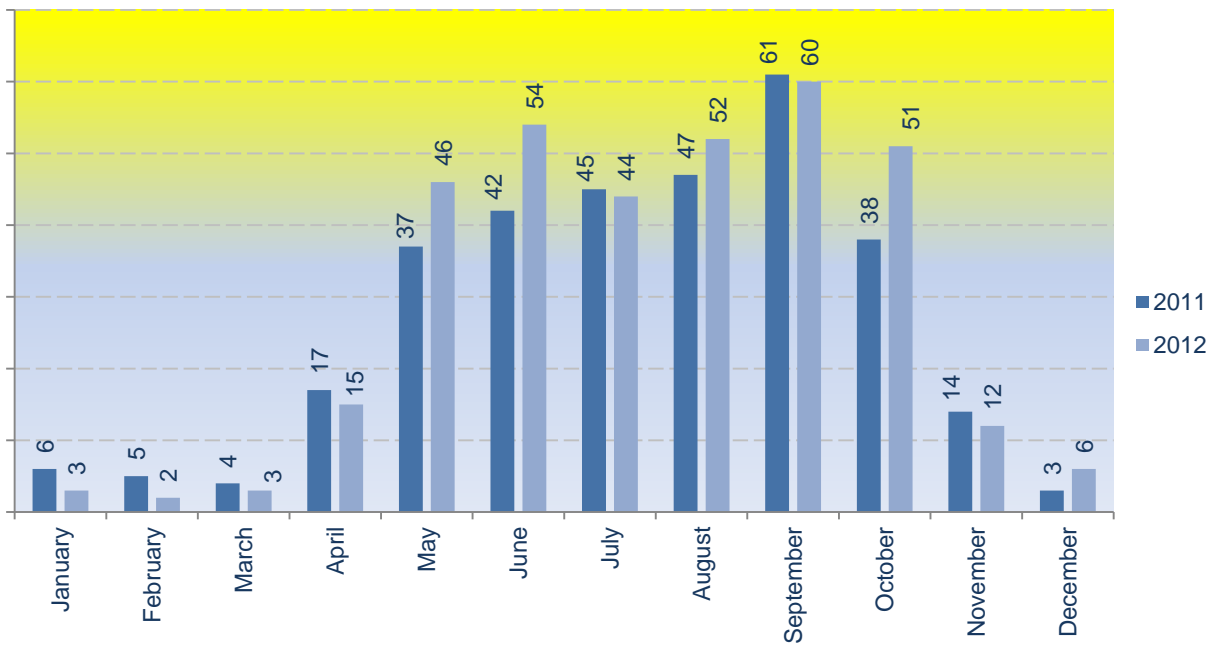
Table 2. Cruises of foreign vessels in Montenegro, by flag under which they arrive, 2012

	Cruises	Passengers	Structure
	(1)	(2)	(1) in %
Total	348	244 084	100.0
Flag			
Bahamas	78	29 711	22.4
Bangladesh	1	183	0.3
Belgium	18	3 121	5.2
Bermuda	13	13 742	3.7
Croatia	5	133	1.4
Finland	3	958	0.9
France	19	4 025	5.5
Greece	16	527	4.6
Italy	29	36 512	8.3
Malta	113	84 792	32.5
Netherlands	7	13 348	2.0
Marshall Islands	13	8 446	3.7
Panama	26	46 673	7.5
Portugal	6	1 706	1.7
Turkey	1	207	0.3

Graph 2. Structure of foreign vessels on cruise by flag under which they arrive, 2012



Graph 3. Cruises of foreign vessels by months



METHODOLOGICAL NOTES

Survey Report on Arrival of Foreign Vessels on Cruise aims at obtaining the data on number of cruises realised in the internal sea waters of Montenegro, as well as number of passengers arrived in Montenegro during these cruises. The data collection is done by reporting method (TU-19 form). Reporting units are seaports. The report is filled for the first entry of vessel in the internal sea waters of Montenegro.

Cruise is a touristic journey which lasts for several days according to a specified itinerary (elaborated plan of a journey) for cruises.

Number of cruise passengers is a number of passengers on vessel excluding the crew. A passenger is any person who arrived by ship irrespective of age providing that he/she is not a crew member.

Published and printed by Statistical Office of Montenegro (MONSTAT)
81000 Podgorica, IV Proleterske 2, Phone (+382) 20 230 811, Fax (+382) 20 230 814

Release prepared by:

Ivana CIMBALJEVIC
Phone +382 20 230 837
e-mail: contact@monstat.org