



# Annual statistic of transport storage and communications

---

## 2014

PODGORICA, MAY 2015.

**Content:**

1	INTRODUCTORY NOTES.....	2
2	METHODOLOGICAL NOTES .....	2
3	RAILWAY TRANSPORT .....	5
4	ROAD AND LOCAL ROAD TRANSPORT .....	8
5	TRANSPORT GOODS BY ROAD .....	10
6	ANNUAL SURVEY ON ROAD NETWORK.....	15
7	NUMBER OF REGISTERED ROAD MOTOR VEHICLES AND TRAILERS .....	16
8	NUMBER OF INJURY ACCIDENTS IN MONTENEGRO.....	21
9	MARITIME TRANSPORT .....	23
10	TRANSSHIPMENT IN PORTS .....	24
11	TURNOVER OF GOODS IN PORTS.....	26
12	ANNUAL SURVAY OF MERCHANT NAVY.....	28
13	TRAFIC AT AIRPORT .....	30
14	AIR TRANSPORT OF PASSENGERS .....	34
15	POSTAL AND TELECOMUNICATION ACTIVITIES .....	36

## 1 INTRODUCTORY NOTES

The publication "Annual statistics of transport, storage and communications - 2014" contains annual data about development and condition of means of transport, business entities engaged in transport, as well as traffic data postal, courier and telecommunication services.

Each transport activity is presented in a separate chapter in the following order: railway transport, road and local road transport of passengers, transport of goods by road, roads network, registered vehicles, traffic accidents, maritime transport, transshipment in the ports, turnover of goods in ports, report on the merchant navy, traffic at airports, air transport and postal and telecommunications activities.

Statistical chapters contain an introduction, notes on methodology and table.

The results of research in the field of statistics, transport and communications are published in other statistical publications: Statistical Yearbook, the Monthly Statistical Review, Statistical statements.

Legal basis for conducting research in the field of transport statistics, the Law on Official Statistics and System of Official Statistical ("Gazette of Montenegro", No. 18/12 of 30.03.2012.).

## 2 METHODOLOGICAL NOTES

### 2.1 Source of data

The data of transport are the result of regular quarterly surveys.

Data source for rail transport are reporting units with the carriage of passengers and goods by rail prevailing activity (Section H, field 49); road passenger traffic reporting units with the carriage of passengers in road traffic prevailing activity (Section H, field 49); local road traffic reporting units with the carriage of passengers in local road (urban) traffic prevailing activity (Section H, field 49); traffic at airports reporting units that perform service activities in air traffic (Section H, field 52); air traffic reporting units which operate in air traffic (Section H, field 51); maritime traffic reporting units with the carriage of goods and passengers in maritime transport prevailing activity (Section H, field 50); to report on the arrival and departure of ships reporting units are the Port Authority; reloading the reporting unit which is engaged manipulating freight (shipping in ships and unloading from them) core business (Section H, field 52); postal and telecommunications traffic reporting unit which is a postal traffic (Section H, area 53) and telecommunications (sector J, division 61) the prevailing activity.

Source data for the number of road traffic accidents is Montenegro police directorate and the number of registered road motor vehicles and trailers Ministry of Interior of Montenegro.

## 2.2 Coverage

The surveys cover enterprises with 5 or more employees who are an statistical business Register according to the activity classification in Section H divisions 49, 50, 51, 52, 53 and Section J divisions 61.

## 2.3 Compliance survey of transport with the EU acquis

Statistics railway transport is conducted in accordance with Regulation (EC) No. 91/2003.

Statistics of road freight transport is conducted in accordance with Regulations (EC) No. 1172/98 and No. 70/2012.

Statistics port traffic is conducted in accordance with Directive (EC) No. 2009/42 and No. 2012/186.

Statistics of traffic safety is conducted in accordance with Regulation (EC) No. 93/704.

Statistics of transport of passengers and cargo at airports is partly harmonized with Regulation (EC) No. 437/2003.

Other research of transport does not rely on the acquis of the European Union.

## 2.4 Definitions

Transport is the movement of passengers and goods and from place of loading to place of unloading.

**Passenger** is every person with ticket or appropriate document with the aim to travel to desired place.

**Passenger kilometer** presents the transport of one person over the distance of 1 km.

**Goods** transported are goods transferred based on the contract on transport. The quantity of goods transported is expressed in gross weight, meaning that the quantity of goods covers also the quantity of packaging or packing material (containers).

**Tonne-kilometre** indicate transport of one-tone goods over the distance of 1 km.

**Trans-sipped tons** of cargo related to the total amount of cargo that passes through the transshipment business entity, where the same load, regardless of the number of manipulations that it has executed, shown only once.

**Manipulated tons** are a unit of performance that expresses the sum of operations registered by kind that are made (unloading, loading, reloading the direct transfer).

**Postal service** is a service of receiving, processing, transfer and delivering letter mails in accordance with accepted standards.

**Letter** is a type of communication in written form on paper or other appropriate data carrier, which must be sent and delivered to the address indicated by the sender on the item or letter cover.

**The package** is a postal consignment containing goods and items.

**Other printed papers** are printed publications issued by the publisher of a daily, occasionally or in a given period (newspapers and magazines).

**Fixed telecommunication is services** providing to users the access to public fixed network at the fixed location, and the use of public accessible telephone service at the fixed location.

**Mobile telecommunication is services** providing to users the access to public mobile network, and the use of mobile telecommunication services.

**Traffic accident** is an event that occurred on the road or the start on the road, which was attended by at least one vehicle in motion and in which one or more persons injured or killed or died within 30 days of the result of the traffic accident or a result damage to property.

**Registered road motor vehicle** and trailer are all vehicles registered in the Ministry of Interiors, except military vehicles.

For the **first time registered vehicles include**: new and imported vehicles, i.e. vehicles with the first-time registration in Montenegro.

**Methodological notes**: It may happen that the total sum does not match the number of individual data, and that the cumulative data is not always equal to the sum of individual quarterly results due to rounding of numbers

### 3 RAILWAY TRANSPORT

Data rail traffic result of regular quarterly and annual surveys on reporting units with the carriage of passengers and goods by rail prevailing activity. Statistical survey is carried out in accordance with Regulation (EC) No. 91/2003.

**The railway** is intended solely for movement of train. Data on the length of railway lines are shown as building and as the really length.

**Building length** is measured from baseline to end point. Building length: open line and length of the main wicket-track in stations and other official places.

**The really length** of the line is the length of the open line and cellular transient gauge, and is measured from the middle to the middle station buildings or other official sites.

#### Comment

Number of passengers carried by rail in 2014 compared to 2013 increased by 21.7%, while goods transported in the same period decreased by 13.9%.

The actual length of the railway line in Montenegro in 2014 amounted to 250 km railway line is single track all the single-phase system of 25 KV, 50Hz.

The number of stations and other official places is 48, of which stops constitute 54.2%, stations 25.0%, while other official sites constitute 20.8%.

**Table 1. Railway transport**

	Years		Index
	2013	2014	$\frac{2014}{2013}$
<b>Transport of passengers and passenger kilometers</b>			
Passenges, <i>thousands</i>	922	1 122	121.7
Passenger kilometers, <i>thousands</i>	73 439	76 142	103.7
<b>Transport goods and tonne-kilometers</b>			
Goods, <i>thousand tonnes</i>	1 049	903	86.1
Tonne-kilometers, <i>in thousands</i>	104 731	94 359	90.1

**Table 2. Passenger-kilometers in the EU countries<sup>1</sup>***in millions*

Country	2008	2009	2010	2011	2012	2013
Belgium	10 139	10 237	...	10 498	...	...
Bulgaria	2 317	2 138	2 090	2 059	1 870	1 821
Czech Republic	6 773	6 472	6 559	6 669	7 196	7 512
Denmark	6 083	5 967	6 148	6 395	6 534	6 566
Germany	82 428	81 206	82 837	...	93 918	89 450
Estonia	274	249	247	243	235	223
Ireland	1 976	1 683	1 678	1 638	1 578	1 569
Greece	1 657	1 467	1 383	...	832	1 056
Spain	23 336	22 742	22 044	22 645	22 170	23 660
France	86 516	88 610	...	91 298	91 205	90 485
Croatia	1 769	1 802	1 711	1 457	1 080	935
Italy	45 767	44 404	43 349	45 944	45 753	47 707
Cyprus	...	...	...	...	...	...
Latvia	941	748	741	733	717	721
Lithuania	258	231	244	269	278	278
Luxembourg	345	...	347	349	373	...
Hungary	8 291	8 003	7 653	7 763	7 769	...
Malta	...	...	...	...	...	...
Netherlands	...	...	...	...	...	...
Austria	9 687	9 620	9 713	9 819	10 248	11 299
Poland	19 762	18 128	17 485	17 633	17 110	16 453
Portugal	4 213	4 213	4 111	4 237	3 803	3 649
Romania	6 877	5 975	5 248	5 044	4 518	4 352
Slovenia	765	773	729	689	659	679
Slovakia	2 296	2 264	2 309	2 431	2 459	2 485
Finland	4 052	3 876	3 959	3 882	4 035	4 053
Sweden	11 146	11 321	11 155	11 379	11 792	11 858
United Kingdom	53 002	52 765	55 831	58 606	60 955	61 976

Source: Eurostat

...=Data not available

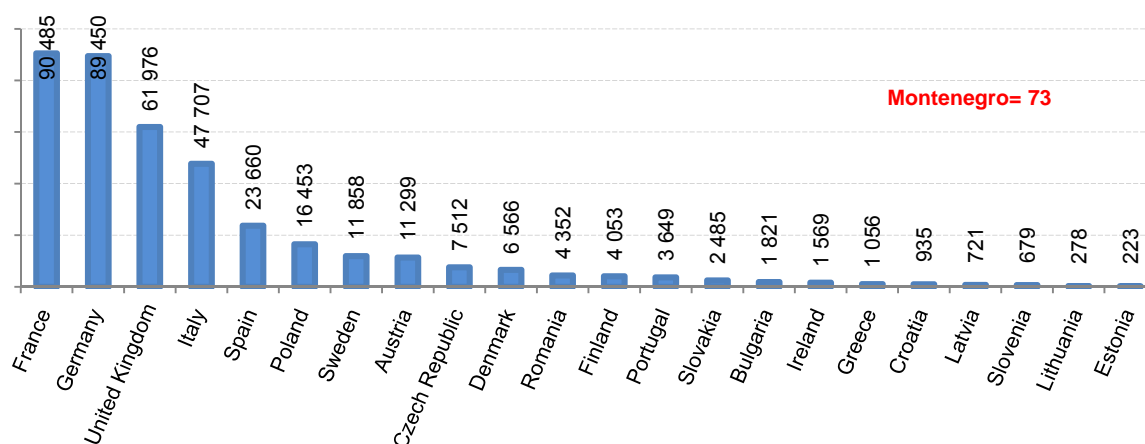
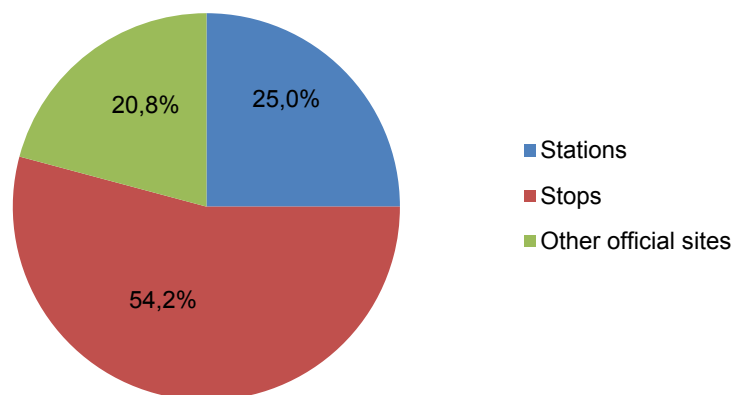
**Chart 1. Passenger-kilometers in millions, 2013**<sup>1</sup>Data for 2014 will be available for 240 days after the end of the reference period.

Table 3. The railway network

	Years		Index
	2013	2014	$\frac{2014}{2013}$
<b>Length of railways in miles</b>			
The actual length of railways	249	250	100.4
From the actual length one-track	249	250	100.4
From the actual length width of track 1,435m	249	250	100.4
Length of track (1.1 + 1.2)	326	328	100.6
1.1 Plain line and main through-track	249	250	100.4
1.2 Cellular and other gauges	77	77	100.0
Of the total length gauge track electrified	224	224	100.0
Of the total length of the non-electrified	25	25	100.0
<b>Railway stations and other official places</b>			
2. Total units (2.1 + 2.2 + 2.3)	48	48	100.0
2.1 Stations	13	12	92.3
2.2 Stops	26	26	100.0
2.3 Other official sites	9	10	111.1

Chart 2. The structure of railway stations and other official sites



## 4 ROAD AND LOCAL ROAD TRANSPORT

The data of road and local road transport are the result of a regular quarterly and annual surveys of reporting units with the carriage of passengers and goods by road and local road traffic prevailing activity.

### Comment

Number of passengers carried in road transport in 2014 compared to 2013 increased by 10.8%, while the local road traffic this increase amounted to 10.6%.

**Table 4. Road passenger transport**

	Years		Index
	2013	2014	<u>2014</u> <u>2013</u>
<b>Inventory status means of transport</b>			
Number of buses	368	349	94.8
Headquarters	13 768	12 870	93.5
Standing	1 800	1 633	90.7
Power, kw	62 703	63 517	101.3
<b>Inventory status buses by the number of seats</b>			
Buses total (1.1 + 1.2)	368	349	94.8
1.1. Buses up to 32 seats	145	138	95.2
1.2 Buses over 32 seats	223	211	94.6
<b>Transport of passengers and passenger kilometers</b>			
Passengers, thousands	6 220	6 889	110.8
Passenger kilometers, thousands	108 802	107 537	98.8
Mileage vehicle - total in thousands	16 697	16 996	101.8

Table 5. Local road transport

	Year		Index
	2013	2014	<u>2014</u> 2013
<b>Inventory status means of transport</b>			
Number of buses	68	68	100.0
Headquarters	5 064	4 970	98.1
Power, kw	7 895	7 661	97.0
<b>Lines</b>			
Number of lines	25	24	96.0
Length of lines, km	560	601	107.3
<b>Passengers and Mileage</b>			
Passengers, thousands	699	773	110.6
Mileage vehicles total in thousands	2 420	3 279	135.5

## 5 TRANSPORT GOODS BY ROAD

Due to changes in the methodology for conducting research on freight transport, in order to achieve compliance with the EU acquis, road freight transport since 2014 been conducted according to a new survey, which was prepared according to the Regulation (EC) No.1172/98 and No. 70/2012. Revised survey is significantly different from previous survey, so that this change caused a break in the time series

The survey is conducted on a sample. Data are collected through benchmarking. The observation unit is goods road motor vehicle with payload capacity 3 500 kg and higher, as well as tractors. The data sources are natural and legal persons which are owners or operators of vehicles. Frame for sample selection is a database of registered vehicles that are obtained from Ministry Interior of Montenegro

**Road transport** is any movements of goods and/or passengers using a road vehicle on a given road network.

**National road transport** is transport between two places (a place of loading and a place of unloading) located in the same country in which the vehicle is registered.

**International road transport** is transport between two places (a place of loading and a place of unloading) in two different countries. It may involve transit through one or more additional country or countries.

**Road cabotage transport** is national road transport performed by a motor vehicle registered in another country.

**Cross-trade road transport** is international road transport performed by a road motor vehicle registered in a third country.

**Tonne kilometre** is unit of measure representing the movement of one tonne available in a road goods vehicle when performing services for which it is primarily intended over one kilometre.

**Transport for hire or reward** is the carriage for remuneration, of persons or goods, on behalf of third parties.

**Transport on own account** is transport which is not for hire or reward.

**Goods road motor vehicle** is any single road motor vehicle designed to carry goods (lorry), or any coupled combination of road vehicles designed to carry goods, (i.e. lorry with trailer(s), or road tractor with semitrailer and with or without trailer).

**Road tractor** is road motor vehicle designed, exclusively or primarily, to haul other road vehicles which are not power-driven.

Transport by types of goods classified under classification of goods **NST 2007**.

**Table 6. Classification of goods for transport statistics NST 2007**

Groups of goods
1. Products of agriculture, hunting, and forestry; fish and other fishing products
2. Coal and lignite; crude petroleum and natural gas
3. Metal ores and other mining and quarrying products; peat; uranium and thorium ores
4. Food products, beverages and tobacco
5. Textiles and textile products; leather and leather products
6. Wood and products of wood and cork (except furniture); articles of straw and plaiting materials; pulp, paper and paper products; printed matter and recorded media
7. Coke and refined petroleum products
8. Chemicals, chemical products, and man-made fibers; rubber and plastic products; nuclear fuel
9. Other non-metallic mineral products
10. Basic metals; fabricated metal products, except machinery and equipment
11. Machinery and equipment n.e.c.; office machinery and computers; electrical machinery and apparatus n.e.c.; radio, television and communication equipment and apparatus; medical, precision and optical instruments; watches and clocks
12. Transport equipment
13. Furniture; other manufactured goods n.e.c.
14. Secondary raw materials; municipal wastes and other wastes
15. Mail, parcels
16. Equipment and material utilized in the transport of goods
17. Goods moved in the course of household and office removals; baggage and articles accompanying travellers; motor vehicles being moved for repair; other non-market goods n.e.c.
18. Grouped goods: a mixture of types of goods which are transported together
19. Unidentifiable goods: goods which for any reason cannot be identified and therefore cannot be assigned to groups 01-16.
20. Other goods n.e.c.

### Comment

In the 2014. road goods motor vehicles registered in Montenegro carried 639 thousands tons of goods and performed 122 483 thousand tonne-kilometers.

Kilometres travelled by loaded vehicles was 6 926 thousands kilometres.

In the structure of transported goods, national transport participates with 85.8% or 548 thousands tons of goods, while international transport participates with 14.2%, or 91 thousands tons of goods. Of the total transported 639 thousands tons of goods transport of hire or reward transported were 262 thousands tons of goods, or 41.0%, while in transport on own account realized 377 thousands tons of goods, or 59.0%.

In the structure of performed tonne-kilometers internal transport participates with 30.4% or 37 256 thousands tonne-kilometers and international transport with 69.6% or 85 227 thousands tonne-kilometers. In transport for hire or reward is realized 94 318 thousands tonne-kilometers or 77.0%, while in transport on own account realized 28 165 thousands tonne-kilometers or 23.0%.

**Table 7. Road goods transport in Montenegro, 2014.**

<b>A = B + C</b>	<b>Goods carried, in thous. tones</b>	<b>Tonne- kilometres, in thous.</b>	<b>Kilometres made, in thous.</b>
<b>Total (1+2)</b>	<b>639</b>	<b>122 483</b>	<b>6 926</b>
<b>1. National transport</b>	548	37 256	2 244
<b>2. International transport (2.1+2.2)</b>	91	85 227	4 681
2.1 Goods loaded/ unloaded in Montenegro	75	65 712	3 828
2.2 Cross-trade and cabotage	16	19 515	853

**Table 8. Road goods transport for hire or reward, 2014.**

<b>B</b>	<b>Goods carried, in thous. tones</b>	<b>Tonne- kilometres, in thous.</b>	<b>Kilometres made, in thous.</b>
<b>Total (1+2)</b>	<b>262</b>	<b>94 318</b>	<b>5 186</b>
<b>1. National transport</b>	183	14 776	969
<b>2. International transport (2.1+2.2)</b>	79	79 542	4 217
2.1 Goods loaded/ unloaded in Montenegro	63	60 027	3 364
2.2 Cross-trade and cabotage	16	19 515	853

**Tabela 9. Road goods transport on own account, 2014.**

<b>C</b>	<b>Goods carried, in thous. tones</b>	<b>Tonne- kilometres, in thous.</b>	<b>Kilometres made, in thous.</b>
<b>Total (1+2)</b>	<b>377</b>	<b>28 165</b>	<b>1 739</b>
<b>1. National transport</b>	365	22 480	1 275
<b>2. International transport (2.1)</b>	12	5 685	464
2.1 Goods loaded/ unloaded in Montenegro	12	5 685	464

Table 10. Mileage empty, 2014.

	A=B+C	B	C
	Total transport	For hire or reward	For own account
	Mileage empty, in thousands.		
<b>Total (1+2)</b>	<b>5 270</b>	<b>3 664</b>	<b>1 606</b>
<b>1. National transport</b>	2 281	1 042	1 239
<b>2. International transport (2.1+2.2)</b>	2 989	2622	367
2.1 Goods loaded/ unloaded in Montenegro	2 803	2436	367
2.2 Cross-trade and cabotage	186	186	-

Table 11. Goods carried by groups of the NST 2007, 2014.

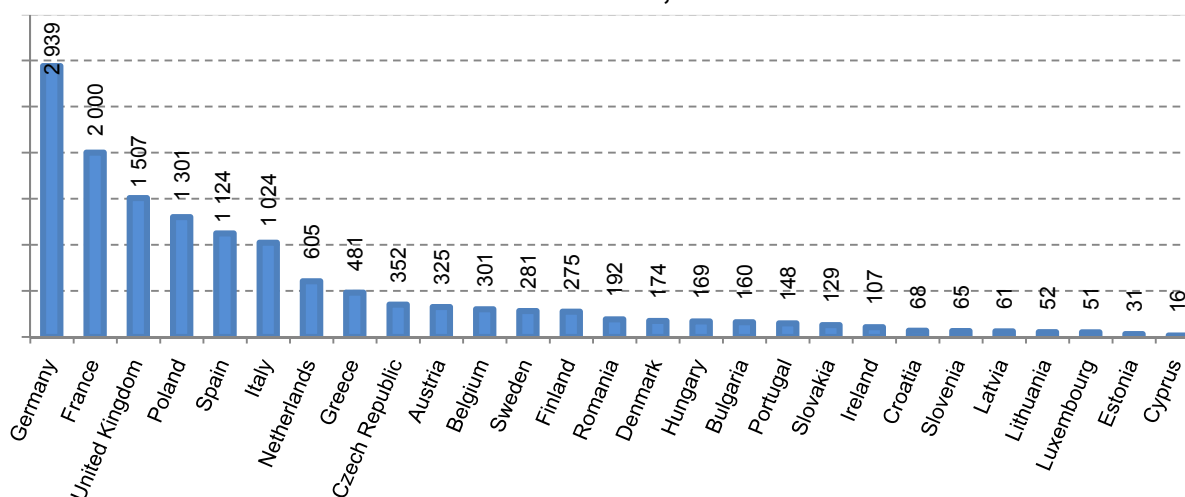
Goods by groups	A =B+C			B			C		
	Road goods transport			For hire or reward			For own account		
	Goods carried, in thous. tones	Tonne-kilometres, in thous.	Kilometres made, in thous.	Goods carried, in thous. tones	Tonne-kilometres, in thous.	Kilometres made, in thous.	Goods carried, in thous. tones	Tonne-kilometres in thous.	Kilometres made, in thous.
<b>Total</b>	<b>639</b>	<b>122 483</b>	<b>6 926</b>	<b>262</b>	<b>94 318</b>	<b>5 186</b>	<b>377</b>	<b>28 165</b>	<b>1 739</b>
1.	57	19 152	1 354	41	17 193	1 037	15	1 958	317
2.	121	9 600	140	1	2 031	85	120	7 569	55
3.	175	15 676	665	35	8 831	472	140	6 845	192
4.	80	26 324	1 724	49	21 910	1 263	30	4 415	461
5.	-	91	48	-	91	48	-	-	-
6.	26	5 932	357	26	5 897	322	-	35	35
7.	3	161	42	2	150	40	-	11	2
8.	8	2 899	255	5	2 639	197	4	260	58
9.	110	15 228	813	75	11 714	552	36	3 514	260
10.	38	21 558	1 010	18	19 780	864	20	1 778	146
11.	2	676	88	1	220	15	2	456	73
12.	7	3 165	231	4	2 197	147	3	968	84
13.	8	1 168	139	2	873	98	6	295	42
14.	1	61	14	-	-	-	1	61	14
15.	1	495	33	1	495	33	-	-	-
16.	-	2	-	-	2	-	-	-	-
17.	1	72	4	1	72	4	-	-	-
18.	-	-	-	-	-	-	-	-	-
19.	1	223	9	1	223	9	-	-	-
20.	-	-	-	-	-	-	-	-	-

**Table 12 . Transported goods in the EU countries<sup>2</sup>***in thousands*

Country	2009	2010	2011	2012	2013
Belgium	297 879	296 189	289 203	291 380	300 608
Bulgaria	146 563	129 922	135 328	140 274	160 127
Czech Republic	370 115	355 911	349 278	339 314	351 517
Denmark	149 344	165 708	178 006	176 354	173 917
Germany	2 769 201	2 734 605	2 986 736	2 891 837	2 938 702
Estonia	30 088	27 315	32 913	31 321	31 080
Ireland	142 126	123 116	109 661	106 465	107 222
Greece	644 528	577 442	505 986	400 124	480 794
Spain	1 710 946	1 566 270	1 466 146	1 238 703	1 124 480
France	1 939 431	2 015 493	2 090 616	2 008 370	1 999 869
Croatia	92 862	74 980	74 657	65 453	67 512
Italy	1 468 954	1 527 763	1 339 672	1 121 313	1 023 872
Cyprus	28 523	32 247	26 050	22 964	16 122
Latvia	37 819	46 808	53 936	52 622	60 610
Lithuania	44 697	44 716	46 019	48 428	52 346
Luxembourg	52 649	60 725	60 687	54 482	51 480
Hungary	229 808	199 848	182 839	165 514	169 211
Malta	...	...	...	...	...
Netherlands	616 903	564 841	561 051	538 475	604 692
Austria	336 691	331 034	344 737	333 963	325 475
Poland	1 170 478	1 216 083	1 322 237	1 245 053	1 300 608
Portugal	258 968	222 142	217 186	154 484	148 177
Romania	293 422	174 124	183 935	188 611	191 554
Slovenia	75 287	81 025	75 615	62 759	65 340
Slovakia	163 491	143 244	132 690	132 270	129 032
Finland	350 588	397 813	317 740	299 397	274 637
Sweden	333 837	322 107	330 992	294 939	281 177
United Kingdom	1 460 797	1 521 135	1 596 318	1 624 735	1 507 108

Source: Eurostat

...=Data not available

**Chart 3. Goods in 2013, in million tones**<sup>2</sup> Data for 2014 will be available for 150 days after the end of the reference period.

## 6 ANNUAL SURVEY ON ROAD NETWORK

Reporting units for survey on roads network and bridges are local administration.

**Road** is every surface that has a permanent place traffic. Data on the roads by type of road are grouped into three basic groups: asphalt, gravel and earthen.

Modern roads are considered roads with pavement veiled asphalt, concrete or gambling.

Other kind of protection are gravel, cobbles, bricks, and the like.

**Earthen road** was built without a lane.

**Uncategorized road** surface is used for traffic on any basis and made available to multiple users (rural, field and forest roads, roads on dikes for flood protection, parking lots, etc.).

**The bridge** is a building structure that traffic translates over water, valleys, roads or any other obstructions.

### Comment

Length of roads in the 2014 amounted to 8 145 km, which is 2.3% more than in the 2013 when it was 7 965 km. Regarding the type of road the highest share in the 2014 year had an asphalt surface whose length was 5 776 km (70.9%), followed by gravel with 1 483 km (18.2%) and earthen roads with 886 km (10.9%).

Number of bridges in the 2014 amounted to 399, and in the 2013 it was 398.

**Table 13. Categorized road and bridges, 2014**

	Year		Index
	2013	2014	2014 2013
<b>Length of roads by type, in km</b>			
1. Roads (1.1+1.2+1.3)	7 965	8 145	102.3
1.1 Modern road (asphalt)	5 576	5 776	103.6
1.2 Gravel	1 505	1 483	98.5
1.3 Earthen and uncategorized	884	886	100.2
<b>Number of bridges by length, in m</b>			
2. Bridges (2.1+2.2)	398	399	100.3
2.1 Bridges from 5 to 10 m	178	180	101.1
2.2 Bridges over 10 m	220	219	99.5

## 7 NUMBER OF REGISTERED ROAD MOTOR VEHICLES AND TRAILERS

The data on number of registered road motor vehicles and trailers are the result of regular monthly surveys from reporting unit – Ministry of Interiors of Montenegro.

**Registered road motor vehicle** and trailer are all vehicles registered in the Ministry of Interiors, except military vehicles.

**For the first time registered** vehicles include: new and imported vehicles, i.e. vehicles with the first-time registration in Montenegro.

**Age of road vehicle** is time passed from the first registration of road motor vehicle regardless of registration country.

### Comment

Number of registered road motor vehicles and trailers in 2014 amounted to 196 059, which is 3.5% less than in 2013, when the number of registered road motor vehicles and trailers totaled 203 266.

Number of first time registrovnih road motor vehicles and trailers in 2014 amounted to 15 233, which is 4.0% more than in 2013, when the number of first time registrovnih road motor vehicles and trailers was 14 654.

**Table 14. Number of registered road motor vehicles and trailers**

	Year		Index
	2013	2014	$\frac{2014}{2013}$
Number of registered vehicles	203 266	196 059	96.5
Number of first time registered vehicles	14 654	15 233	104.0

**Table 15. Number of registered road motor vehicles and trailers, 2014 by municipality**

Type of vehicle/ Municipality	Motorcycles	Passenger cars	Vans	Buses	Goods road vehicles
<b>Sum</b>	<b>3 703</b>	<b>174 073</b>	<b>769</b>	<b>1 247</b>	<b>11 992</b>
Andrijevica	1	829	8	1	64
Bar	451	15 512	85	43	904
Berane	30	5 586	100	59	339
Bijelo Polje	33	8 085	31	42	615
Budva	549	10 359	51	135	577
Cetinje	90	5 373	4	52	323
Danilovgrad	35	3 939	8	95	387
Herceg Novi	673	10 665	79	94	631
Kolašin	10	1 499	20	20	87
Kotor	498	8 732	70	34	537
Mojkovac	19	1 374	29	5	49
Nikšić	79	16 145	64	169	1 294
Plav	3	2 027	21	17	70
Pljevlja	17	6 379	10	66	424
Plužine	1	438	6	1	23
Podgorica	766	59 978	24	277	4 617
Rožaje	5	4 223	91	35	239
Tivat	237	5 701	45	28	353
Ulcinj	204	6 213	8	73	387
Šavnik	-	291	5	1	40
Žabljak	2	725	10	-	32

*/continue/*

Type of vehicle/ Municipality	Special purpose vehicles	Road tractors	Trailers	Agricultural tractors	Sum
<b>Sum</b>	<b>934</b>	<b>1 069</b>	<b>2 043</b>	<b>229</b>	<b>196 059</b>
Andrijevica	14	-	6	3	926
Bar	146	89	158	1	17 389
Berane	41	26	87	14	6 282
Bijelo Polje	133	67	162	70	9 238
Budva	53	5	46	-	11 775
Cetinje	49	76	122	2	6 091
Danilovgrad	32	16	34	11	4 557
Herceg Novi	88	34	64	3	12 331
Kolašin	14	3	13	4	1 670
Kotor	148	50	95	1	10 165
Mojkovac	17	2	8	-	1 503
Nikšić	17	144	258	26	18 170
Plav	13	4	16	3	2 174
Pljevlja	10	38	94	29	7 067
Plužine	-	-	1	8	478
Podgorica	16	411	672	44	66 805
Rožaje	32	93	160	-	4 878
Tivat	49	8	32	-	6 453
Ulcinj	45	1	7	1	6 939
Šavnik	1	-	1	6	345
Žabljak	16	2	7	3	797

**Table 16. Number of first time registered road motor vehicles and trailers, 2014  
by municipality**

Type of vehicle/ Municipality	Motorcycles	Passenger cars	Vans	Buses	Goods road vehicles
<b>Sum</b>	<b>562</b>	<b>13 048</b>	<b>16</b>	<b>72</b>	<b>889</b>
Andrijevica	-	50	-	-	3
Bar	88	1 124	-	-	61
Berane	10	409	2	6	33
Bijelo Polje	9	634	-	-	59
Budva	77	840	1	7	47
Cetinje	24	543	-	1	27
Danilovgrad	5	185	-	7	31
Herceg Novi	61	612	-	3	35
Kolašin	3	53	1	-	9
Kotor	61	641	3	4	29
Mojkovac	2	96	-	-	7
Nikšić	6	1 063	-	15	61
Plav	-	161	-	-	4
Pljevlja	3	387	-	1	28
Plužine	-	16	-	-	2
Podgorica	132	4 815	-	21	359
Rožaje	2	461	5	2	24
Tivat	27	486	3	1	33
Ulcinj	52	424	-	4	34
Šavnik	-	11	-	-	1
Žabljak	-	37	1	-	2

/continue/

Type of vehicle/ Municipality	Special purpose vehicles	Road tractors	Trailers	Agricultural tractors	Sum
<b>Sum</b>	<b>26</b>	<b>124</b>	<b>285</b>	<b>211</b>	<b>15 233</b>
Andrijevica	-	-	-	3	56
Bar	10	8	15	1	1 307
Berane	-	4	17	12	493
Bijelo Polje	3	4	36	69	814
Budva	1	2	6	-	981
Cetinje	-	11	8	1	615
Danilovgrad	-	4	10	9	251
Herceg Novi	2	2	6	-	721
Kolašin	-	1	2	4	73
Kotor	4	4	8	1	755
Mojkovac	1	-	-	-	106
Nikšić	-	15	36	23	1 219
Plav	1	-	-	3	169
Pljevlja	-	6	11	27	463
Plužine	-	-	1	8	27
Podgorica	-	57	106	40	5 530
Rožaje	3	6	16	-	519
Tivat	-	-	2	-	552
Ulcinj	-	-	2	1	517
Šavnik	1	-	1	6	20
Žabljak	-	-	2	3	45

**Table 17. Number of registered road motor vehicles and trailers by age of vehicle**

Production age	Motorcycles	Passenger cars	Vans	Buses	Goods road vehicles
<b>Sum</b>	<b>3 703</b>	<b>174 073</b>	<b>769</b>	<b>1 247</b>	<b>11 992</b>
Do 1979	13	400	3	2	281
1980-1989	59	18 848	125	141	1 480
1990-1994	63	29 784	175	190	1 290
1995-1999	139	32 966	193	227	1 729
2000	62	7 054	18	28	304
2001	71	10 676	25	26	538
2002	112	9 272	30	72	659
2003	154	8 022	22	68	603
2004	127	7 478	19	87	611
2005	238	6 419	28	71	566
2006	316	6 301	14	49	595
2007	528	8 785	24	99	834
2008	591	8 738	24	90	1 013
2009	195	4 348	10	17	295
2010	135	4 491	2	12	280
2011	137	3 906	48	37	332
2012	212	2 537	5	8	248
2013	306	2 184	2	12	181
2014	245	1 864	2	11	153

*/continue/*

Production age	Special purpose vehicles	Road tractors	Trailers	Agricultural tractor	Sum
<b>Sum</b>	<b>934</b>	<b>1 069</b>	<b>2 043</b>	<b>229</b>	<b>196 059</b>
Do 1979	35		41	8	783
1980-1989	196	12	227	37	21 125
1990-1994	103	53	268	18	31 944
1995-1999	101	170	370	3	35 898
2000	14	71	81	-	7 632
2001	35	71	91	1	11 534
2002	56	81	102	-	10 384
2003	42	64	76	-	9 051
2004	26	65	99	2	8 514
2005	28	59	75	-	7 484
2006	36	76	72	-	7 459
2007	72	128	156	1	10 627
2008	99	122	153	3	10 833
2009	25	22	22	1	4 935
2010	12	17	34	3	4 986
2011	8	7	30	5	4 510
2012	37	9	31	13	3 100
2013	7	14	47	73	2 826
2014	2	28	68	61	2 434

Chart 5. Number of registered passenger cars by age of vehicle

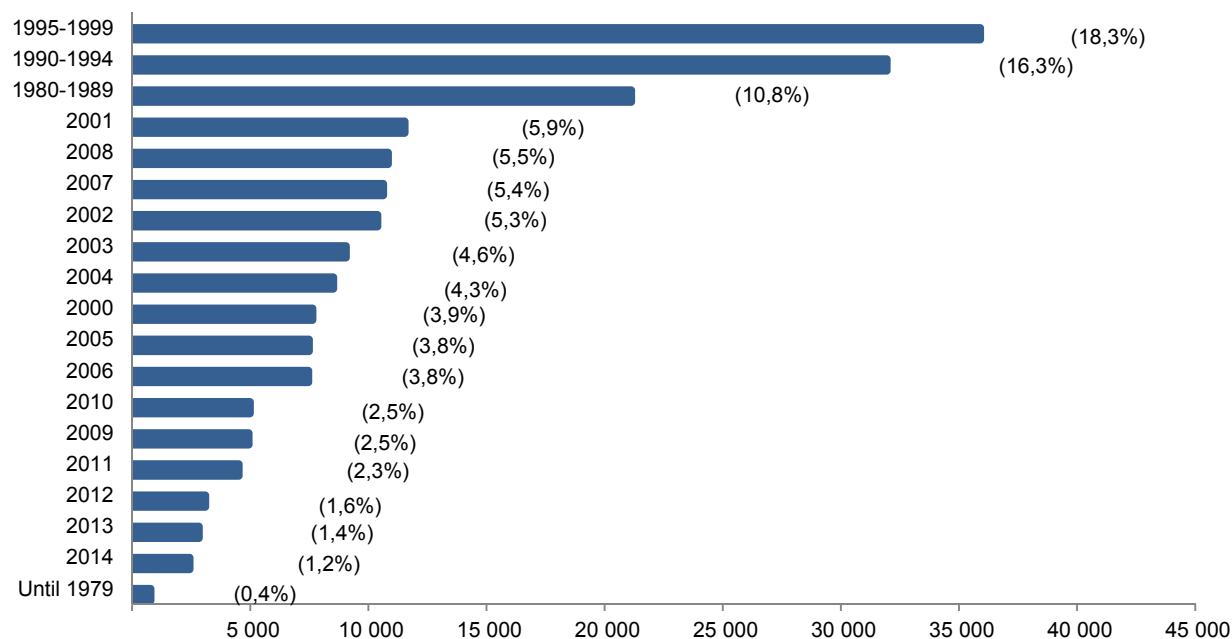
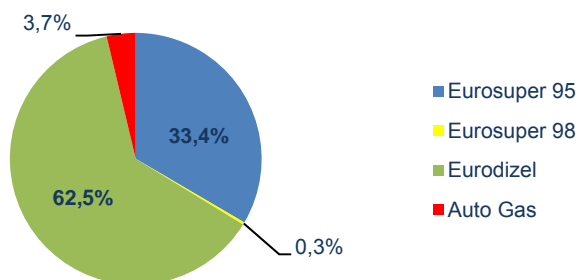


Table 18. Number of registered road motor vehicles by type of motor energy

Type of motor energy	Year		Index
	2013	2014	$\frac{2014}{2013}$
<b>Total</b>	<b>201 439</b>	<b>194 016</b>	<b>96.3</b>
Eurosuper 95	81 412	64 874	79.7
Eurosuper 98	814	595	73.1
Eurodizel	117 506	121 270	103.2
Mixture	25	16	64.0
Auto Gas	1 675	7 232	431.8
Electricity	7	29	414.3

Chart 6. Structure of registered road motor vehicles and trailers by type of motor energy, 2014



## 8 NUMBER OF INJURY ACCIDENTS IN MONTENEGRO

The reporting unit for the number of road traffic accidents is Montenegro Police Administration. Statistics of traffic safety is conducted in accordance with Regulation (EC) No. 93/704.

The publication presents data on the number of traffic accidents, as well as the injured and killed people in road accidents.

**Traffic accident** is an event that occurred on the road or the start on the road, which was attended by at least one vehicle in motion and in which one or more persons injured or killed or died within 30 days of the result of the traffic accident or a result damage to property.

**Killed persons** shall be any person who is killed instantly or died within 30 days of the result of traffic accidents with injured persons.

**Injury person** is any person who is not killed, but who sustained injuries in the accident with injured face and that usually requires medical care.

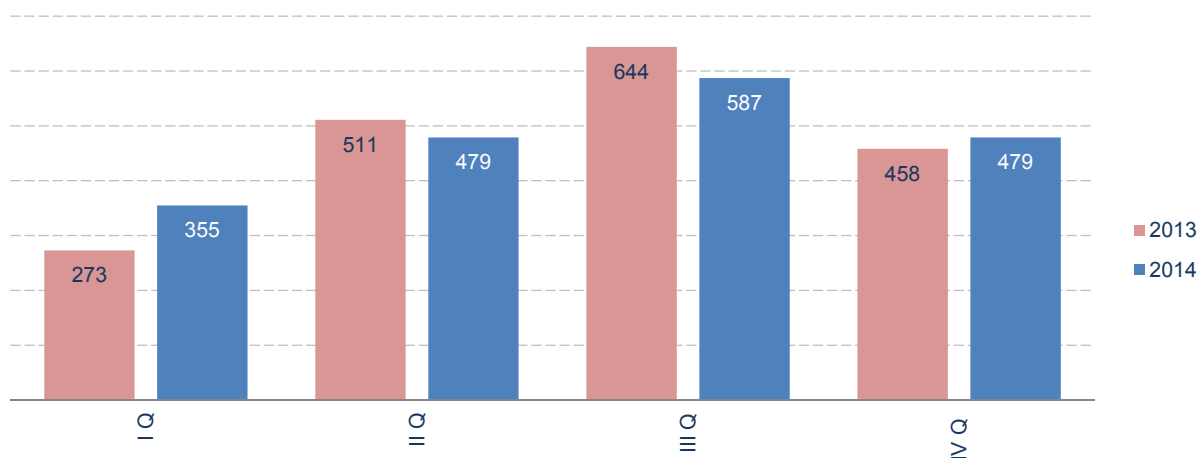
**Casualties** is any person killed or injured as a result of an injury accident.

### Comment

The number of traffic accidents in 2014 was 5 531, as compared to 2013 increased by 5.1%, when the number of accidents was 5 264.

Number of casualties in 2014 was 1 900 (of which 1 835 injured and 65 killed persons), which is increased by 0.7% compared to 2013.

**Chart 7. Casualties persons in accidents per quarter**



**Table 19. Number of injury accidents by quarters**

	Year		Index
	2013	2014	$\frac{2014}{2013}$
<b>Number of injury accidents</b>			
Total	5 264	5 531	105.1
QI	980	1 105	112.8
QII	1 218	1 385	113.7
QIII	1 693	1 718	101.5
QIV	1 373	1 323	96.4
<b>Number of persons killed and persons injured</b>			
Total	1 886	1 900	100.7
QI	273	355	130.0
QII	511	479	93.7
QIII	644	587	91.1
QIV	458	479	104.6
<b>Number of persons injured</b>			
Total	1 812	1 835	101.3
QI	262	344	131.3
QII	477	463	97.1
QIII	624	572	91.7
QIV	449	456	101.6
<b>Number of persons killed</b>			
Total	74	65	87.8
QI	11	11	100.0
QII	34	16	47.1
QIII	20	15	75.0
QIV	9	23	255.6

## 9 MARITIME TRANSPORT

Reporting units for data maritime transport enterprises with the carriage of goods and passengers in maritime transport prevailing activities.

The publication presents data on transport of passengers and goods in maritime transport, inventory condition of transport vehicles at the end of the year.

### Comment

Number of passengers carried in 2014 compared to 2013 decreased by 1.4%, while goods transported in the same period increased by 7.8%.

**Table 20. Maritime transport**

	Year		Index
	2013	2014	<u>2014</u> <u>2013</u>
<b>Inventory status means of transport</b>			
Passenger ships	1	1	100.0
BRT(gross register tons)	8 700	8 700	100.0
Passenger seats	920	920	100.0
Carrying capacity. in tons	3 036	3 036	100.0
Number of beds	458	458	100.0
<b>Passengers and goods transported</b>			
Passengers	43 097	42 489	98.6
Goods, in thous.tons	51	55	107.8

## 10 TRANSSHIPMENT IN PORTS

Reporting units for data on transshipment companies whose core activity is the manipulation of cargo (loading and unloading of ships in from them) preavailing activities.

The publication presents data on transshipment of goods in ports, as well as data on inventory condition of transfer of funds.

**Gantry cranes** all types of cranes fixed to land or rail cargo handling by ship or boat.

**Overhead cranes** include all kinds of cranes in the warehouse, or open space, which are used to move cargo.

**Auto-cranes** represent a special type of motor vehicles is determined by the crane (arrows).

**Auto-lifts** (forklifts) are motor vehicles where the load is placed on the forks or other attachments

**Trans-sippedtons** of cargo related to the total amount of cargo that passes through the transshipment business entity, where the same load, regardless of the number of manipulations that it has executed, shown only once.

**Manipulated tons** is a unit of performance that expresses the sum of operations registered by kind that are made (unloading, loading, reloading the direct transfer).

**Unloading** includes unloading goods from the vehicle to the ground, the coast or other spaces for the facility (warehouse, factory grounds and the like.).

**Loading** involves loading goods from the country, coast or other areas of transportation.

**Direct transshipment** entails transshipment of goods from one vehicle to another, without the use of space on the ground, coast

**Comment**

Trans-shipment tons in 2014 compared to 2013 increased by 1.3%, while the number of manipulated tons of goods increased by 1.7%.

**Table 21. Transshipment in ports**

	Year		Index
	2013	2014	<u>2014</u> 2013
<b>Inventori state of transshipment</b>			
Gantry and semi-gantry cranes	13	13	100.0
Ton-capacity	393	393	100.0
Overhead cranes	3	3	100.0
Ton-capacity	36	36	100.0
Truck cranes	5	4	80.0
Ton-capacity	140	122	87.1
Auto-elevators	68	65	95.6
Ton-capacity	398	389	97.7
Loaders	16	15	93.8
Ton-capacity	32	29	90.6
<b>Transshipment and manipulated tones</b>			
Trans-shipped tones, thous.	1 764	1 787	101.3
Tone-operations (manipulated tonnes)	2 713	2 760	101.7
<b>Manipulated tone the way we use, in thousands</b>			
First manipulated tons (1.1 + 1.2)	2 713	2 760	101.7
1.1 Mechanization	2 713	2 760	101.7
1.2 Manual	-	-	-
<b>Manipulated tons by type of manipulation, in thousands</b>			
2. Manipulated tons (2.1 + 2.2 + 2.3 + 2.4)	2 713	2 760	101.7
2.1 Unloading	1 393	1 436	103.1
2.2 Loading	1 252	1 248	99.7
2.3 Direct transshipment	68	75	110.3
2.4 Relocation	-	1	-

## 11 TURNOVER OF GOODS IN PORTS

Data traffic in goods in ports are the result of a regular quarterly surveys for which the reporting unit Port Authority. Statistical survey is carried out in accordance with Directive (EC) No. 2009/42 and no. 2012/186.

**Ports** are places for loading/embarkation and unloading/disembarkation passengers and goods at the seashore built particularly for this purpose, while docks are similar places on riverbanks and lake fronts.

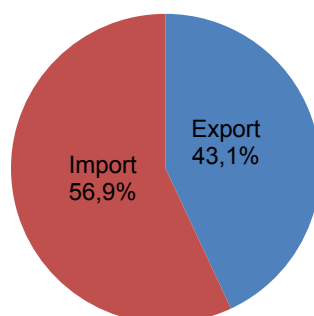
### Comment

Total goods traffic ports in 2014 compared to 2013 decreased by 4.2%, the amount of exported goods decreased by 10.7%, while the amount of imported goods in the same period increased by 5.5%.

**Table 22. Turnover of goods in ports**

	Year		Index
	2013	2014	$\frac{2014}{2013}$
<b>Total traffic in ports</b>			
Total traffic	1 295 366	1 241 431	95.8
Export	597 675	533 780	89.3
Import	669 384	705 991	105.5

**Chart 8. Structure of exports and imports**

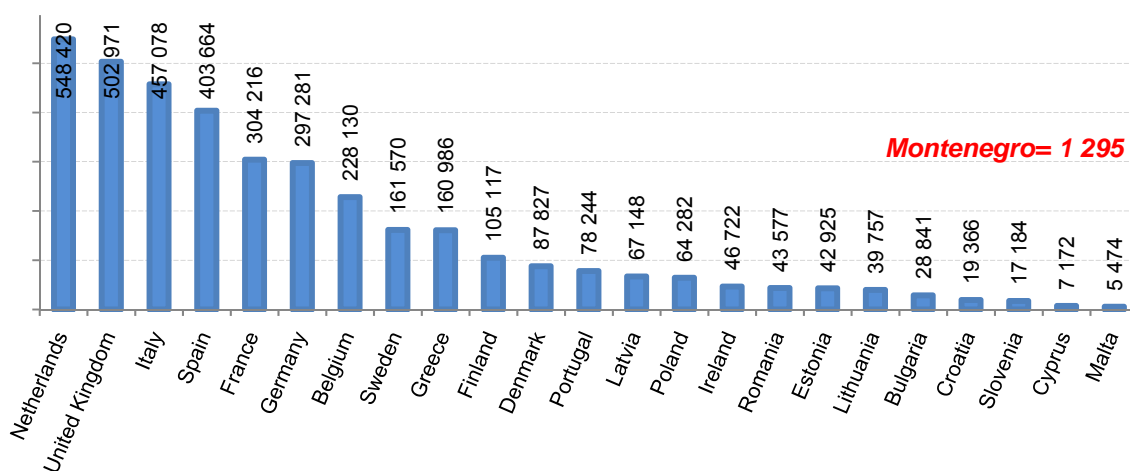


**Table 23. The carriage of goods by sea in the EU countries<sup>3</sup>***in thousand tone*

Country	2008	2009	2010	2011	2012	2013
Belgium	243 819	203 368	228 228	232 789	223 987	228 130
Bulgaria	26 576	21 893	22 946	25 185	26 012	28 841
Czech Republic	...	...	...	...	...	...
Denmark	106 096	90 636	87 068	92 613	87 827	87 827
Germany	320 636	262 863	275 953	296 037	298 758	297 281
Estonia	36 191	38 505	46 026	48 479	43 503	42 925
Ireland	51 081	41 829	45 071	45 078	47 649	46 722
Greece	152 498	135 430	129 059	135 314	153 317	160 986
Spain	416 158	363 536	376 376	403 694	422 152	403 664
France	351 976	315 534	313 593	322 251	303 269	304 216
Croatia	29 223	23 377	24 329	21 862	18 972	19 366
Italy	526 219	469 879	494 091	499 885	476 823	457 078
Cyprus	7 962	6 808	6 954	6 564	6 236	7 172
Latvia	61 430	60 088	58 691	67 016	72 723	67 148
Lithuania	36 379	34 344	37 869	42 661	41 033	39 757
Luxembourg	...	...	...	...	...	...
Hungary	...	...	...	...	...	...
Malta	5 501	5 507	6 004	5 578	5 511	5 474
Netherlands	530 359	483 133	538 702	532 717	549 564	548 420
Austria	...	...	...	...	...	...
Poland	48 833	45 079	59 507	57 738	58 825	64 282
Portugal	65 275	61 714	65 981	67 506	67 875	78 244
Romania	50 458	36 094	38 122	38 918	39 520	43 577
Slovenia	16 554	13 356	14 591	16 198	16 907	17 184
Slovakia	...	...	...	...	...	...
Finland	114 725	93 239	109 326	115 452	105 120	105 117
Sweden	187 778	161 823	179 579	177 093	172 976	161 570
United Kingdom	562 166	500 863	511 875	519 495	500 860	502 971

Source: Eurostat

...=Data not available

**Chart 9. Transported goods, in thousands tone 2013**<sup>3</sup>Data for 2014 will be available for 240 days after the end of the reference period.

## 12 ANNUAL SURVEY OF MERCHANT NAVY

The reporting unit for information about the merchant fleet is the Ministry of Transport.

**Passenger ship** are ship designed specifically to carry more than 12 fare-paying passengers.

**Freight ships** are ship intended freight. There are include tankers.

**Tugboats** (tractors) ships are intended for towing vessels of other units.

**The capacity** of means of transport is expressed in GRT (gross tonnage registration), cargo capacity, passenger stations, the number of beds and kW (power).

**Fishing boat**, this category includes boats for fishing vessels and fish processing.

**GRT-gross** tonnage is a measure of the total size of the ship determined in accordance with the provisions of the International Convention on tonnage measurement of ships, 1969.

**DWT- the** loading capacity of the ship, including fuel, lubricants, etc., for the normal functioning of the ship, measured in tons, when the ship is immersed in a water line.

**Technical facilities** at ports in number and maximum size vessel that can accommodate include: docks, rafts, special dock for ship repair

Table 23. Merchant navy ships, 2014

	Total	GRT (gross tonnage)	Capacity	Loading space	Power, kw
			Passengers	DWT	
<b>1. Ocean-going vessels total</b>	<b>4</b>	<b>89 488</b>	<b>-</b>	<b>142 072</b>	<b>25 660</b>
1.1 Freight ships	4	89 488	-	142 072	25 660
<b>2. Ships large coastal navigation total</b>	<b>1</b>	<b>1 785</b>	<b>-</b>	<b>1 700</b>	<b>1 400</b>
2.1 Freight ships	1	1 785	-	1 700	1 400
<b>3. Ships over 100 BRT total (3.1 + 3.2 + 3.3 + 3.4)</b>	<b>12</b>	<b>2 856</b>	<b>1 846</b>	<b>976</b>	<b>8 525</b>
3.1 Passenger ships	4	683	896	-	1 898
3.2 Ferries	5	1 347	950	726	2587
3.3 Floating objects	1	348	-	250	894
3.4 Tugs	2	478	-	-	3 146
<b>4. Ships 51-99 BRT total (4.1 + 4.2 + 4.3 + 4.4)</b>	<b>18</b>	<b>1 416</b>	<b>274</b>	<b>637</b>	<b>3 802</b>
4.1 Passenger ships	3	246	162	-	2 022
4.2 Cargo ships	3	277	12	112	836
4.3 Floating objects	6	500	-	525	107
4.4 Tugs	6	393	100	-	837
<b>5. Ships 10-50 BRT total (5.1 + 5.2 + 5.3 + 5.4)</b>	<b>26</b>	<b>930</b>	<b>1 391</b>	<b>83</b>	<b>5 417</b>
5.1 Passenger ships	19	635	1 367	-	4 013
5.2 Freight ships	4	162	-	83	631
5.3 Gulets and motor sailers	2	84	24	-	518
5.4 Tugs	1	49	-	-	255

Table 24. Fishing boats and tehcnical facilities, 2014

	Total	GRT (gross tonnage)	Power, KW	Carrying capacity, in tons	Tone boot
Crawler	1	233	372	-	-
Cranes	1	327	-	-	-
Klape	3	259	-	107	-
Rafts	1	53	-	125	-
Waterfront	2	34 419	-	4 300	-
Fishing boats	27	1 839	9 444	-	-

## 13 TRAFIC AT AIRPORT

Data traffic of goods and passengers at the airports are the result of the regular quarterly and annual surveys of that reporting unit enterprises providing services in air transport. Statistics of transport of passengers and cargo at airports is partly harmonized with Regulation (EC) No. 437/2003.

**Airport** is defined area of land or water (including any buildings, facilities, and equipment) intended to be used either aircraft take-off and landing, as well as for movements of aircrafts on the land area, and open for commercial air transport operations.

**Passengers in aircraft** are all passengers in aircraft when the aircraft landing at the reporting airport or take-off of aircraft from the reporting airport.

**Goods** are any goods that are transported for a fee, other than mail, baggage and airline stocks.

**Runway** is a designated rectangular area at the airport of intended landing and takeoff of aircraft, which has the following characteristics:

- Available length for take off

The length of runway declared available and suitable for the ground run of an aircraft taking off.

- Available lengths to stop

The length of runway which is declared available and suitable for the ground run of an aircraft landing.

### Comment

The number of passengers at airports in 2014 compared to 2013, increased by 3.4%, while goods transported in the same period increased by 12.2%.

Table 25. Traffic at airport

	Year		Index
	2013	2014	$\frac{2014}{2013}$
<b>Passengers carried and goods at airports</b>			
Passengers carried	1 558 940*	1 612 130	103.4
Goods carried, in tons	768	862	112.2
<b>Airport surfaces (surfaces in m²)</b>			
Runway	227 440*	227 440	100.0
Taxiway and apron	148 704	148 704	100.0
The protective belt of runway	1 036 000	1 036 000	100.0
<b>Funds for the work</b>			
Buses	1	1	100.0
Vehicle for the supply (catering)	1	1	100.0
Towing vehicles (tractors)	16	25	156.3
Autolift and „cargo“ platform	2	2	100.0
Fire tracks	7	7	100.0
Tank trucks and commercial vehicles	1	1	100.0
<b>Employees</b>			
Employees total	492	594	120.7
1. Employees in air transport (1.1 + 1.2 + 1.3)	392	394	100.5
1.1 Employees of the dispatch and acceptance of aircraft and passengers	202	177	87.6
1.2 Employees on the handling of cargo and baggage	59	54	91.5
1.3 Other employees in the air transport	131	163	124.4
<b>Consumption of electricity, fuels and lubricants</b>			
Electric power, kWh	4 028 520	3 840 658	95.3
Diesel fuel, tons	97	88	90.7
Lubricant (oils and fats), tons	1	1	100.0

Table 26. Transported goods in EU countries<sup>4</sup>

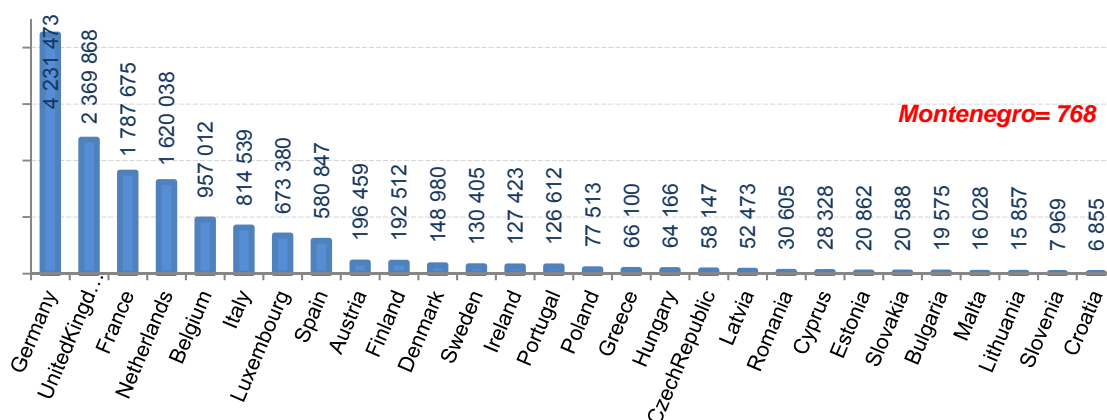
in tones

Country	2008	2009	2010	2011	2012	2013
Belgium	1 071 346	836 409	973 776	1 000 990	963 564	957 012
Bulgaria	19 533	17 450	21 110	21 879	18 529	19 575
Czech Republic	55 906	53 924	65 620	69 206	58 707	58 147
Denmark	254 100	158 767	150 270	155 662	166 283	148 980
Germany	3 568 668	3 341 222	4 099 072	4 309 649	4 218 208	4 231 473
Estonia	41 744	20 526	11 886	18 341	23 760	20 862
Ireland	126 855	112 049	122 231	113 409	126 834	127 423
Greece	108 628	95 222	86 596	78 870	70 045	66 100
Spain	539 803	502 585	592 336	611 974	593 523	580 847
France	1 668 136	1 445 599	1 582 342	1 813 646	1 810 203	1 787 675
Croatia	8 578	8 724	7 441	7 228	6 961	6 855
Italy	814 995	705 883	838 724	846 551	790 493	814 539
Cyprus	42 795	38 636	37 264	29 480	27 581	28 328
Latvia	6 884	8 646	11 268	11 571	31 460	52 473
Lithuania	9 049	6 465	9 762	10 011	14 342	15 857
Luxembourg	788 218	627 261	705 829	666 011	615 286	673 380
Hungary	62 544	54 138	65 305	68 860	61 902	64 166
Malta	18 222	17 496	16 882	16 204	16 493	16 028
Netherlands	1 648 519	1 371 235	1 600 381	1 614 895	1 563 500	1 620 038
Austria	206 221	202 642	236 633	219 448	197 543	196 459
Poland	58 148	53 510	61 238	68 370	74 701	77 513
Portugal	136 361	125 498	137 126	121 464	117 645	126 612
Romania	24 431	23 482	24 512	26 156	28 523	30 605
Slovenia	8 180	5 584	6 071	6 877	7 572	7 969
Slovakia	7 432	12 231	17 835	20 542	20 893	20 588
Finland	147 822	126 900	165 254	179 216	195 631	192 512
Sweden	205 760	161 179	186 263	164 618	141 365	130 405
United Kingdom	2 411 459	2 156 153	2 428 996	2 419 713	2 428 374	2 369 868

Source: Eurostat

...=Data not available

Chart 10. Transported goods, in tones 2013

<sup>4</sup>Data for 2014 will be available for 180 days after the expiry of the reference period.

**Table 27. Passengers carried in EU countries<sup>5</sup>**

Country	2010	2011	2012	2013
Belgium	22 690 502	25 098 923	25 913 625	26 387 222
Bulgaria	6 168 346	6 651 562	6 819 024	7 078 294
Czech Republic	12 242 386	12 650 532	11 742 352	11 891 812
Denmark	24 330 644	25 804 863	26 528 356	27 453 282
Germany	166 130 833	175 316 076	178 591 103	180 781 589
Estonia	1 381 062	1 907 569	2 202 427	1 958 565
Ireland	23 093 749	23 362 889	23 594 089	24 603 640
Greece	32 131 780	33 291 435	31 575 703	33 621 019
Spain	153 387 014	165 153 230	159 771 261	157 731 973
France	122 887 263	131 425 313	135 005 802	138 085 382
Croatia	4 677 030	4 989 047	5 422 530	5 722 025
Italy	109 064 953	116 226 667	116 029 388	115 271 926
Cyprus	6 947 632	7 190 265	7 328 248	7 011 437
Latvia	4 655 898	5 098 360	4 754 530	4 782 257
Lithuania	2 282 834	2 691 991	3 166 628	3 482 358
Luxembourg	1 613 600	1 836 761	1 893 988	2 168 748
Hungary	8 174 510	8 884 837	8 429 843	8 441 319
Malta	3 293 548	3 506 723	3 650 345	4 031 848
Netherlands	48 616 387	53 895 216	55 680 131	58 077 221
Austria	23 532 455	25 137 612	25 965 977	25 749 724
Poland	18 382 517	20 634 903	21 791 428	23 274 169
Portugal	25 732 352	27 578 334	28 186 254	29 694 146
Romania	8 848 949	9 687 456	9 674 226	10 016 933
Slovenia	1 382 341	1 358 792	1 167 877	1 265 766
Slovakia	1 881 844	1 808 187	1 563 197	1 557 149
Finland	14 220 636	16 374 398	16 458 815	16 565 391
Sweden	26 646 764	29 732 247	30 350 845	31 443 225
United Kingdom	192 884 537	201 535 227	203 066 646	210 468 756

Source: Eurostat

...=Data not available

<sup>5</sup>Data for 2014 will be available for 180 days after the expiry of the reference period.

## 14 AIR TRANSPORT OF PASSENGERS

Data of air transport are the result of the regular quarterly and annual surveys of reporting units, which operate in air traffic.

**Number of aircraft** at the end of the year relates to the inventory status of assets owned by the company.

**Number of passenger seats** refers to the number of seats onboard the aircraft which the inventory status is given at the end of the year.

**Net carrying capacity**, kg, or available, the payload capacity of an aircraft that is designed to carry passengers, baggage, cargo and mail.

**Standing-regular lines** are those on which the transport is performed during the year and where public transport is performed by a particular schedule (timetable).

**The number of lines** is the sum of all the lines, taking each line in only one direction. If the circuit will only go in one direction, is taken as one line. If you later impose traffic in the opposite direction, the number of lines remains unchanged.

**The total length of the line** represents the sum of the length of each line in one direction. The total length of the line and take all the lines that existed during the year, regardless of the time in which they exerted on the traffic and the number of flights performed.

**Scheduled air service** for passenger and goods transport is a commercial air service operated according to a published timetable.

**Non-scheduled air service** is a commercial air service other than scheduled air service.

**Passenger** is any person who has purchased a plane ticket or equivalent document of a plane and entered the plane in order to be transported to the place of commitment

**The realized passenger kilometers** is one of the main performance indicators of the organization of air traffic, and refer to the total length of transportation of all passengers on all routes at home and abroad

**Comment**

The number of passengers carried by scheduled air transportation in 2014 compared to 2013 decreased by 5.2%, while the number of passengers carried by non-scheduled transport in air traffic over the same period decreased by 13.4%

**Table 28. Air transport**

	Year		Index
	2013	2014	<u>2014</u> <u>2013</u>
<b>Inventory status</b>			
Number of aircraft	7	6	85.7
Number of passenger seats	776	678	87.4
Capacity aircraft, kg (net weight)	191 000	168 883	88.4
<b>Constant, regular lines</b>			
Number	22	28	127.3
Length, Km	23 276	35 784	153.7
<b>Aircraft operation</b>			
1. Total number of flights (1.1+1.2)	7 791	7 032	90.3
1.1 In scheduled air transport	7 172	6 493	90.5
1.2 In non-scheduled air transport	619	539	87.1
2. Air miles, in thousands (2.1+2.2)	7 214	6 452	89.4
2.1 In scheduled air transport	6 840	6 164	90.1
2.2 In non-scheduled air transport	374	288	77.0
<b>Passengers and passengers kilometers</b>			
3. Passenger carried total	576 715	543 740	94.3
3.1 In scheduled air transport	539 878	511 833	94.8
3.2 In non-scheduled air transport	36 837	31 907	86.6
4. Passenger kilometres total, in thousands (4.1+4.2)	547 522	514 698	94.0
4.1 In scheduled air transport	521 008	495 847	95.2
4.2 In non-scheduled air transport	26 514	18 851	71.1

## 15 POSTAL AND TELECOMMUNICATION ACTIVITIES

Data of the postal and telecommunications traffic result of regular quarterly and annual surveys on reporting units with the postal services and telecommunications prevailing activities.

**Postal service** is a service of receiving, processing, transfer, and delivering letter mails in accordance with accepted standards.

**Postal network** of universal postal operator is a set of postal facilities, equipment, and other means which are connected in a universal, technical and technological unity for purpose of providing universal postal service.

**Postal office** is considered as the office space in which a public operator performs postal services.

**Post office delivery** perform tasks receipt, dispatching, arrival and delivery of postal items.

**Post offices without delivery area** opens, generally, in areas with more postal office, and performs reception, arrival and dispatch of mail, with a team that can perform and delivery of postal items to the post office.

**Seasonal post office** are open due to increased demand for services (e.g. during the tourist season).

**Letter** is a type of communication in written form on paper or other appropriate data carrier, which must be sent and delivered to the address indicated by the sender on the item or letter cover.

**Package** is a postal consignment containing goods and items.

**Registered mail** is the item for which the sender is issued a certificate of acceptance and shall be delivered to the recipient with the signature in case of loss, damage or reduced content of the prescribed fee paid damages.

**Other printed papers** are printed publications issued by the publisher of a daily, occasionally or in a given period (newspapers and magazines).

**Fixed telecommunication** is a service providing to users the access to public fixed network at the fixed location, and the use of public accessible telephone service at the fixed location.

**Mobile telecommunication** is a service providing to users the access to public mobile network, and the use of mobile telecommunication services.

**Subscriber means** any natural or legal person who is the provider of publicly available communications services contracted for the purpose of using these services and their provision by the operator.

### Comment

Consumption of fixed telephony minutes in 2014 compared to 2013 decreased by 22.0%, while consumption of minutes of mobile telephony in the same period increased by 10.7%.

**Table 29. Postal activities**

	Year		Index
	2013	2014	$\frac{2014}{2013}$
<b>Postal network and means of transport</b>			
1. <b>Postal network units</b> (1.1+1.2+1.3)	135	135	100.0
1.1 Post office delivery	89	94	105.6
1.2 Post offices without delivery area	38	35	92.1
1.3 Seasonal post offices	8	6	75.0
2. <b>Seasonal post offices</b> (2.1 + 2.2 + 2.3)	272	272	100.0
2.1 Post chaises	23	23	100.0
2.2 Mopeds, bicycles and tricycles	215	215	100.0
2.3 Mopeds, bicycles and tricycles	34	34	100.0
<b>Number of employees</b>			
Total number of employees	828	766	92.5
Of total number women	378	373	98.7
Number of postmen	239	192	80.3
<b>Letter post service, in thousands of pieces</b>			
Letters	11 335	12 921	114.0
Packages	42	67	159.5
Other printed papers	70	88	125.7

Table 30. Telecommunication activities

	Year		Index
	2013	2014	<u>2014</u> 2013
<b>Minutes spent in telecommunication services</b>			
Fixed telecommunication minutes spent, <i>in thous.</i>	362 301	282 637	78.0
Mobile telecommunication minutes spent, <i>in thous.</i>	1 989 825	2 202 048	110.7
<b>Statistics of subscribers</b>			
Fixed-line subscribers, total	169 348	164 874	97.4
Residential subscribers	147 363	143 437	97.3
Business subscribers	21 985	21 437	97.5
Mobile subscribers, total	996 774	1 013 296	101.7
Number of subscribers under contract	328 018	472 747	144.1
Pre-paid subscribers	668 756	540 549	80.8
<b>Employees</b>			
Total number of employees	1 205	1 215	100.8
Of which women	573	567	99.0
<b>Revenue in thousands EUR</b>			
Revenues from fixed telephony	23 169	20 793	89.7
Revenues from mobile telephony	87 543	77 117	88.1

**Published and printed by Statistical Office of Montenegro (MONSTAT)**

**20000 Podgorica, IV Proleterske 2**

**Phone (+382) 20 230-811, Fax (+382) 20 230-814**

*The publication prepared by:*

**Jelena POPOVIC**

**Phone: +382 20 231 004;**

*E-mail:* [contact@monstat.org](mailto:contact@monstat.org)