

ZAVOD ZA STATISTIKU CRNE GORE
STATISTICAL OFFICE OF MONTENEGRO

GODINA LVII / YEAR (57)

ISSN 0354-365X

MJESEČNI STATISTIČKI PREGLED
MONTHLY STATISTICAL REVIEW

2009
11

PODGORICA, 2009

IZDAJE I ŠTAMPA: Zavod za statistiku Crne Gore - MONSTAT
PUBLISHED AND PRINTED BY: Statistical Office of Montenegro - MONSTAT

ODGOVARA: Radomir Đurović, direktor
RESPONSIBLE: Radomir Đurović, Director

Podgorica, IV Proleterske br. 2, Tel: +382 20 230-811
E-mail: statistika@monstat.org Web Site: www.monstat.org

CIP – Katalogizacija u publikaciji
Centralna narodna biblioteka Crne Gore, Cetinje
311 / 314

Mjesečni statistički pregled = Monthly
Statistical review. Urednik Rajko Laković. – God.
1, br.1 (1953) – . - Podgorica (IV Proleterske br. 2)
Zavod za statistiku Crne Gore – Monstat, 1992 (Podgorica:
Zavod za statistiku Crne Gore) . – 30 cm

Mjesečno. – je nastavak: Mjesečni statistički pregled
NR Crne Gore (Titograd) = ISSN 0544-912X
ISSN 0354-365X = Mjesečni statistički pregled (Podgorica)
COBISS. CG ID 07622928

UVOD

U MJESEČNOM STATISTIČKOM PREGLEDU Zavod za statistiku – MONSTAT objavljuje podatke za Crnu Goru. To su službeni statistički podaci koji se prikupljaju i obrađuju u skladu sa programom statističkih istraživanja i rezultat su rada zvaničnih statističkih službi.

Statistički podaci u MJESEČNOM STATISTIČKOM PREGLEDU prikazani su u godišnjim, kvartalnim i mjesečnim serijama i sistematizovani su u dva dijela. Godišnje serije obuhvataju tri do pet posljednjih uzastopnih godina. Kvartalne serije se odnose na kvartale u prošloj i tekućoj godini, a mjesečne serije obuhvataju period od trinaest mjeseci iz tekuće i prethodne godine. Ispod odgovarajućih tabela, gdje je potrebno, daju se kratka objašnjenja.

Pored podataka koje prikuplja i obrađuje Zavod za statistiku Crne Gore - MONSTAT, u ovom broju PREGLEDA su objavljeni i podaci Zavoda za zapošljavanje i Centralne Banke Crne Gore.

Podaci za tekuću godinu su obično prethodni, pa su moguće manje greške koje se postepeno ispravljaju u narednim brojevima i obilježavaju se zvjezdicom, u onom broju PREGLEDA u kojem je izvršena ispravka.

Sadržaj publikacije je prilagođen međunarodnim potrebama i obavezama u smislu primjene Klasifikacije djelatnosti (NACE Rev1), koja se primjenjuje od 01.01.2001. godine.

Od januara 2008. godine MJESEČNI STATISTIČKI PREGLED je obogaćen novim sadržajima i preveden je na engleski jezik.

INTRODUCTION

Statistical Office of Montenegro publishes statistical data for Montenegro in the MONTHLY STATISTICAL REVIEW. These are the official statistical data collected and processed according to the Programme of Statistical Surveys as the result of official statistical services.

Statistical data in the MONTHLY STATISTICAL REVIEW are presented in annual, quarterly and monthly series and are systemized in two parts. The Annual series of data cover 3-5 last consecutive years. Quarterly series refer to quarters in the previous and current year, and monthly series include period of thirteen months from the previous and current year. Where necessary, short explanations are given below the tables.

Besides data collected by the Statistical Office of Montenegro - MONSTAT, this issue of MONTHLY STATISTICAL REVIEW also publishes data from Employment Agency and Central Bank of Montenegro.

Data for the current year are usually preliminary, so minor errors are possible and are gradually corrected in the following numbers, and they are marked with the small star in the number of the MONTHLY STATISTICAL REVIEW where the correction has been made.

The contents of the publication is adapted to the international needs and obligations regarding the application of the Classification of Activities (NACE, REV1), used since January 2001.

Since January 2008, the MONTHLY STATISTICAL REVIEW contains new contents and has been translated into English language.

ZNACI

SYMBOLS

nema pojave	=	—	=	No occurrence of event
ne raspolaže se podatkom	=	...	=	Data not available
podatak je manji od 0,5 date jedinice mjere	=	0	=	Value not zero but less than 0,5 of the unit of E
prosjeak	=	Ø	=	Average
ispravljen podatak	=	*	=	Corrected data
nepotpun, odnosno nedovoljno provjeren podatak	=	()	=	Incomplete or insufficiently checked data

SADRŽAJ

UVOD	3
SADRŽAJ	5
OPŠTI PREGLED INDEKSA	
Kvartalni indeksi	7
Mjesečni indeksi.....	8
STANOVNIŠTVO	
Prirodno kretanje stanovništva.....	10
Prirodno kretanje stanovništva po opštinama.....	11
Kretanje stanovništva unutar Crne Gore po opštinama.....	12
ZAPOSLENOST I ZARADE	
Zaposleni po sektorima djelatnosti	13
Zaposleni po opštinama	14
Nezaposlena lica.....	15
Prosječne zarade po sektorima djelatnosti.....	16
Prosječne zarade bez poreza i doprinosa po sektorima djelatnosti	17
Indeksi prosječnih zarada po sektorima djelatnosti.....	18
Indeksi prosječnih zarada bez poreza i doprinosa po sektorima djelatnosti	19
Prosječne zarade po opštinama	20
Prosječne zarade bez poreza i doprinosa po opštinama.....	21
CIJENE	
Indeksi cijena proizvođača industrijskih proizvoda.....	22
Indeksi potrošačkih cijena po grupama proizvoda	24
Indeksi potrošačkih cijena.....	26
ŠUMARSTVO	27
INDUSTRIJA	
Indeksi industrijske proizvodnje po sektorima	28
Indeksi industrijske proizvodnje po podsektorima.....	29
GRAĐEVINARSTVO	
Vrijednost izvršenih i ugovorenih radova, broj zaposlenih i izvršeni efektivni časovi	31
SPOLJNA TRGOVINA	
Izvoz i uvoz po zemljama	32
Izvoz i uvoz robe.....	33
UNUTRAŠNJA TRGOVINA	
Promet u trgovini na malo.....	36
Prodaja i otkup proizvoda poljoprivrede, šumarstva i ribarstva.....	37
UGOSTITELJSTVO	
Promet u ugostiteljstvu.....	38
TURIZAM	
Dolasci i noćenja turista po zemljama i vrsti mjesta	39
Dolasci i noćenja gostiju po vrstama turističkih mjesta	40
Broj dolazaka i noćenja turista.....	40
SAOBRAĆAJ, SKLADIŠTENJE I VEZE	
Željeznički saobraćaj.....	41
Drumski saobraćaj.....	42
Vazdušni saobraćaj	43
Pomorski saobraćaj	44
PTT saobraćaj.....	44
MONETARNI AGREGATI I PLATNI BILANS	45
METODOLOŠKA OBJAŠNJENJA	47

CONTENTS

INTRODUCTION	3
CONTENTS	5
SUMMARY OF INDICES	
Quarterly indices	7
Monthly indices.....	8
POPULATION	
Natural population changes	10
Natural population changes by municipality	11
Migrations inside Montenegro by municipality	12
EMPLOYMENT AND WAGES	
Employees by activity sectors	13
Employees by municipality	14
Unemployed persons	45
Average wages by activity sectors	16
Average wages without taxes and contributions by activity sector	17
Indices of average wages by activity sector	18
Indices of average wages without taxes and contributions by activity sector	19
Average wages by municipality	20
Average wages without taxes and contributions by municipality	21
PRICES	
Producers price indices for industrial products	22
Retail by groups of products.....	24
Consumer prices index	26
FORESTRY	27
INDUSTRY	
Indices of industrial production by sectors	28
Indices of industrial production by subsectors	29
CONSTRUCTION	
Value of finalized and ordered works, number of employees and finalized effective hours.....	31
EXTERNAL TRADE	
Exports and imports by countries	32
Exports and imports of goods.....	33
DOMESTIC TRADE	
Turnover in retail trade.....	40
Sale and buying out of products from agriculture, forestry and fishery	41
CATERING	
Turnover in catering	42
TOURISM	
Tourist arrivals and tourist overnight stays by country and type of resort	43
Tourist arrivals and tourist overnight stays by type of resort.....	44
Tourist arrivals and tourist overnight stays	44
TRANSPORT, STORAGE AND COMMUNICATIONS	
Railway transport	45
Road transport	46
Air transport	47
Marine transport.....	48
Postal, telegraph and telephone (PTT) communications	48
MONETARY AGGREGATES AND BALANCE OF PAYMENTS	49
METHODOLOGICAL EXPLANATION	51

OPŠTI PREGLED INDEKSA / SUMMARY OF INDICES

Kvartalni indeksi / Quarterly indices

	2008 2007	Kvartali / Quarters							
		III 2008 II 2008	IV 2008 III 2008	I 2009 I 2008	II 2009 II 2008	III 2009 III 2008	II 2009 I 2009	III 2009 II 2009	
OSTANOVNIŠTVO ¹⁾									POPULATION ¹⁾
Živorodeni	104.4	122.2	96.2	95.3	100.3	102.8	105.5	116.6	Liveborn
Umrli	92.8	102.6	104.5	86.9	98.4	102.4	102.3	103.0	Deaths
Prirodni priraštaj	141.8	172.3	83.7	122.8	115.2	98.7	113.7	147.6	Natural increase
Zaključeni brakovi	87.9	135.9	74.4	125.4	101.7	100.6	110.6	134.4	Marriages
Razvedeni brakovi	76.4	79.5	67.0	106.5	35.2	145.4	65.2	327.9	Divorces
ZAPOSLENOST I ZARADE									EMPLOYMENT AND EARNINGS
Broj zaposlenih	106.3	101.3	100.3	105.2	105.5	105.8	103.1	101.7	Number of employees
Lica koja traže zaposlenje	85.8	95.2	100.7	92.9	93.5	95.5	95.6	97.2	Persons looking for employm.
Nominalne zarade bez poreza i doprinosa	123.1	102.7	101.9	118.5	113.0	108.0	100.1	98.1	Nominal wages without taxes and contributions
Realne zarade bez poreza i doprinosa	114.6	101.0	101.3	112.6	108.3	105.6	99.0	98.3	Real wages without taxes and contributions
CIJENE									PRICES
Indeks potrošačkih cijena	107.4	101.7	100.6	105.2	104.3	102.3	101.1	99.8	Consumer prices index
Hrana i bezalkoholna pića	108.2	100.0	101.8	105.7	104.2	102.6	100.8	98.5	Food and non alch. beverages
Odjeća i obuća	100.7	100.4	101.1	101.4	101.0	100.5	99.5	99.8	Clothes and footwear
Pokućstvo i oprema za kuću	100.8	100.4	100.5	100.8	98.8	96.0	98.1	98.4	Household furnishing
Cijene proizvođača ind.proizvoda	114.0	104.8	98.1	103.6	96.7	90.7	98.5	98.3	Produc. price ind. for ind.prod.
INDUSTRIJA									INDUSTRY
Indeksi fizičkog obima	98.0	110.1	98.1	86.4	71.9	47.8	83.2	73.2	Indices of physical scope
GRAĐEVINARSTVO ¹⁾									CONSTRUCTION ¹⁾
Vrijednost izvedenih građevinskih radova	145.7	104.1	92.5	90.9*	72.7*	76.4	134.9*	109.5	Value of performed construction works
Izvršeni efektivni časovi na gradilištu	120.7	104.0	94.9	88.2*	83.7*	77.2	110.6*	95.9	Performed effective hours at the construction site
SPOLJNA TRGOVINA									EXTERNAL TRADE
Izvoz	88.9	91.2	76.7	75.8	43.1	67.7	75.7	143.0	Export
Uvoz	121.9	103.2	75.1	65.9	58.4	59.9	117.3	105.9	Import
UNUTRAŠNJA TRGOVINA									DOMESTIC TRADE
Promet u trgovini na malo	116	122.2	78.8	100.6	87.3	87.2	118.3	122.2	Turnover in retail trade
UGOSTITELJSTVO	105.0	220.0	23.4	96.6	90.5	98.9	265.4	240.5	CATERING
TURIZAM									TOURISM
Posjete turista	106.4	355.5	10.6	85.7	94.9	102.8	387.1	396.5	Visits of tourists
Noćenja turista	110.3	440.1	10.3	83.6	92.7	95.2	477.4	475.2	Overnight stays of tourists
SAOBRAĆAJ, SKLADIŠTENJE I VEZE									TRANSPORT, STORAGE AND COMMUNICATIONS
Drumski-prevoz robe	149.3	79.5	93.7	91.7	127.6	153.7	152.0	95.0	Road - transport of goods
Prevoz putnika	87.3	132.5	78.0	71.8	110.4	85.8	155.5	67.3	Transport of passengers
Željeznički – prevoz robe	99.4	98.0	109.3	66.6	31.1	59.0	63.1	93.8	Railway - transport of goods
Prevoz putnika	113.6	147.5	60.0	86.7	85.2	78.2	133.3	84.5	Transport of passengers
Vazdušni – prevoz robe	112.9	71.5	121.0	40.6	63.0	100.9	102.4	163.7	Air – transport of goods
Prevoz putnika	108.2	167.3	31.2	85.5	79.7	82.9	197.9	76.5	Transport of passengers
Pomorski– Prevoz robe – t milje	86.3	274.6	35.9	77.3	64.2	80.3	83.4	343.1	Marine- transport of goods – t miles

¹⁾ Prethodni podaci za III kvartal¹⁾ Preliminary data

OPŠTI PREGLED INDEKSA / SUMMARY OF INDICES

Mjesečni indeksi / Monthly indices

	2008 2007	I-X 2009 I-X 2008	X-2009 IX -2009	Ø 2008 = 100			2009	
				X	XI	XII	I	II
STANOVNIŠTVO ¹⁾								
Živorodeni	105.4	100.3	97.0	106.1	105.8	111.8	92.7	88.3
Umrli	95.5	97.0	114.6	111.2	101.5	100.2	80.3	90.9
Prirodni priraštaj	141.8	109.8	73.1	95.4	115.0	136.4	119.1	83.0
Zaključeni brakovi	87.9	107.2	98.0	122.0	99.5	74.3	89.3	91.0
Razvedeni brakovi	76.4	91.0	39.3	104.0	69.4	52.0	52.0	65.9
ZAPOSLENOST I ZARADE								
Broj zaposlenih	106.3	105.4	99.2	101.4	101.7	101.8	101.9	102.1
Lica koja traže zaposlenje	85.8	94.5	105.2	97.1	97.1	96.2	98.0	99.3
Nominalne zarade bez poreza i doprinosa	123.1	112.1	100.4	101.7	102.9	106.5	113.0	112.2
Realne zarade bez poreza i doprinosa	114.6	108.1	100.4	99.8	101.6	104.1	110.8	109.2
CIJENE								
Indeks potrošačkih cijena	107.4	103.7	100.0	101.9	101.3	102.3	102.0	102.7
Hrana i bezalkoholna pića	108.2	103.9	99.9	101.2	101.7	102.8	102.8	103.6
Odjeća i obuća	100.7	100.9	101.0	100.8	101.0	101.1	101.2	100.9
Pokućstvo i oprema za kuću	100.8	98.1	99.8	100.5	100.5	100.6	100.7	100.2
Cijene proizvođača industrijskih proizv.	114.0	96.3	100.5	104.0	103.4	99.2	98.1	98.1
ŠUMARSTVO								
Indeksi fizičkog obima	107.6	75.6	58.4	219.4	119.6	49.9	8.1	27.5
INDUSTRIJA								
Indeksi fizičkog obima	98.0	68.4	119.4	93.9	105.8	96.4	92.9	95.7
SPOLJNA TRGOVINA								
Izvoz	88.9	63.0	145.8	88.6	95.0	66.0	84.8	55.3
Uvoz	121.9	62.2	103.1	96.7	75.4	88.9	47.6	54.2
UNUTRAŠNJA TRGOVINA								
Promet robe na malo	116.0	90.4	97.9	102.0	84.2	108.6	74.1	76.5
Prodaja i otkup proizvoda poljoprivrede, šumarstva i ribarstva	122.2	97.0	103.0	156.3	115.4	102.1	77.3	63.5
UGOSTITELJSTVO								
Promet u ugostiteljstvu	105.0	94.9	37.8	68.5	38.7	44.9	30.3	34.1
TURIZAM								
Posjete turista	106.4	102.2	20.7	34.2	17.7	35.1	17.5	19.9
Noćenja turista	110.3	97.6	15.8	26.9	14.6	48.2	12.6	13.2
SAOBRAĆAJ, SKLADIŠT. I VEZE								
Drumski – prevoz robe	149.3	125.8	87.4	86.1	86.0	86.6	75.0	108.3
Prevoz putnika	87.3	79.9	83.1	96.6	94.8	94.2	76.1	73.4
Željeznički – prevoz robe	99.4	98.2	98.2	110.7	112.6	105.7	68.0	53.1
Prevoz putnika	113.6	83.3	80.0	62.4	67.2	129.6	76.7	43.2
Vazdušni - prevoz putnika	108.2	31.1	31.1	69.3	51.5	50.3	45.3	38.4
Pomorski- prevoz robe – t milje	86.3	76.8	63.9	78.5	75.1	54.6	51.2	47.8

¹⁾ Prethodni podaci

OPŠTI PREGLED INDEKSA/ *SUMMARY OF INDICES*Mjesečni indeksi / *Monthly indices*

2009								
III	IV	V	VI	VII	VIII	IX	X	
94.7	85.1	100.4	103.5	119.7	102.0	114.4	110.9	POPULATION ¹⁾
119.8	101.0	90.0	101.1	95.2	107.6	95.0	108.9	Liveborn
41.5	51.6	120.0	105.4	169.3	86.7	152.9	111.8	Deaths
88.6	82.1	119.3	96.1	125.1	138.0	136.7	133.9	Natural increase
111.0	20.8	69.4	59.0	131.8	65.9	291.3	114.5	Marriages
								Divorces
								EMPLOYMENT AND EARNINGS
102.6	103.8	104.8	107.6	107.5	107.7	106.4	105.6	Number of employees
98.8	97.0	94.1	91.9	91.6	91.0	92.5	97.3	Persons looking for employment
110.8	110.8	112.5	112.0	110.0	110.8	109.1	109.6	Nominal wages without taxes and contributions
107.4	106.8	108.3	108.2	107.0	106.5	105.2	105.7	Real wages without taxes and contributions
								PRICES
103.2	103.8	103.9	103.5	102.9	104.0	103.7	103.7	Consumer prices index
104.1	104.8	105.0	103.2	102.4	102.9	102.9	102.7	Food and non alch. beverages
100.9	100.7	100.6	100.4	100.4	100.4	100.0	101.3	Clothes and footwear
100.4	99.7	97.9	97.8	97.5	96.3	94.5	94.3	Household furnishing
96.6	96.8	96.3	95.3	93.9	94.5	95.1	95.6	Produc. price ind. for ind. prod.
								FORESTRY
16.6	67.7	87.1	106.4	105.3	141.2	138.5	80.9	Indices of physical scope
								INDUSTRY
94.5	76.0	64.1	57.0	50.0	45.2	49.0	58.5	Indices of physical scope
								EXTERNAL TRADE
55.7	39.8	33.9	74.4	92.1	69.0	50.8	74.0	Export
60.01	59.9	62.7	67.3	68.0	65.6	67.5	69.6	Import
								INTERNAL TRADE
75.2	887.5	86.2	93.6	113.9	119.5	93.1	91.2	Turnover of retail trade goods
64.2	73.7	71.0	104.5	110.3	146.4	119.4	123.1	Sales and buy out of products in agriculture, forestry and fishing
								CATERING
36.2	44.1	106.1	116.7	186.5	233.3	197.6	74.7	Turnover in catering
								TOURISM
18.9	30.0	76.1	115.3	309.5	403.7	164.7	34.0	Visits of tourists
12.2	19.0	55.3	114.2	303.9	451.8	139.6	22.1	Overnight stays of tourists
								TRANSPORT, STORAGE AND COMMUNIC.
108.3	101.6	194.7	147.1	143.2	130.0	151.0	84.4	Road - transport of goods
46.3	77.4	119.2	108.0	123.2	107.2	83.4	66.6	Transport of passengers
54.4	41.5	20.6	48.6	44.0	57.3	76.2	75.0	Railway - transport of goods
67.2	62.4	67.2	120.0	134.4	134.4	69.1	57.6	Transport of passengers
48.1	53.6	75.7	131.5	177.4	200.0	125.3	39.0	Air - transport of passengers
61.4	37.5	58.0	41.0	177.5	187.7	99.0	61.4	Marine- transport of goods - t miles

¹⁾ Preliminary data

PRIRODNO KRETANJE STANOVNIŠTVA
NATURAL POPULATION CHANGES

Crna Gora / Montenegro

	Živorodeni <i>Live births</i>			Umrli <i>Deaths</i>			Vitalni indeks <i>Vital index</i>	Prirodni priraštaj <i>Natural increase</i>	Brakovi / <i>Marriages</i>	
	<i>ukupno</i> <i>Total</i>	<i>muško</i> <i>Male</i>	<i>žensko</i> <i>Female</i>	<i>ukupno</i> <i>Total</i>	<i>muško</i> <i>Male</i>	<i>žensko</i> <i>Female</i>			sklopljeni <i>New marriages</i>	razvedeni <i>Divorces</i>
2004	7849	4030	3819	5707	3011	2696	1.38	2142	3440	505
2005	7352	3883	3469	5839	3082	2757	1.26	1513	3291	499
2006	7531	3969	3562	5968	3092	2876	1.26	1563	3462	470
2007	7834	4136	3698	5979	3048	2931	1.31	1855	4005	453
2008	8258	4313	3945	5708	2982	2726	1.45	2550	3521	346 ¹⁾
Ø I - X 2008	692	365	327	480	252	228	1.44	212	301	31
Ø I - X 2009	694	369	325	466	240	225	1.49	228	323	28
2008										
X	719	364	355	471	251	220	1.53	248	358	30
XI	686	328	358	452	221	231	1.52	234	292	20
XII	653	337	316	455	244	211	1.44	198	218	15
2009 ¹⁾										
I	632	337	295	371	186	185	1.70	261	262	15
II	602	329	273	420	208	212	1.43	182	267	19
III	645	343	302	554	268	286	1.16	91	260	32
IV	580	321	259	467	219	248	1.24	113	241	6
V	691	385	306	428	222	206	1.61	263	350	20
VI	712	376	336	481	259	222	1.48	231	282	17
VII	824	440	384	453	244	209	1.82	371	367	38
VIII	702	364	338	512	285	227	1.37	190	405	19
IX	787	412	375	452	238	214	1.74	335	401	84
X	763	383	380	518	274	244	1.47	245	393	33
I- X 2009/I- X 2008	100.3	101.2	99.3	97.0	95.5	98.6		107.7	107.2	91.0

¹⁾ Prethodni podaci¹⁾ Preliminary data

PRIRODNO KRETANJE STANOVNIŠTVA PO OPŠTINAMA
NATURAL POPULATION CHANGES BY MUNICIPALITY
I – X 2009. god.¹⁾

	Živorodeni / <i>Live births</i>			Umrli / <i>Deaths</i>			Vitalni indeks <i>Vital index</i>	Prirodni priraštaj <i>Natural increase</i>	Brakovi / <i>Marriages</i>	
	ukupno <i>Total</i>	muški <i>Male</i>	ženski <i>Female</i>	ukupno <i>Total</i>	muški <i>Male</i>	ženski <i>Female</i>			sklopljeni <i>New marriages</i>	razvedeni <i>Divorces</i>
CRNA GORA MONTENEGRO	6938	3690	3248	4717	2433	2284	1.47	2221	3228	283
ANDRIJEVICA	32	14	18	58	29	29	0.55	-26	14	0
BAR	466	258	208	311	159	152	1.50	155	259	44
BERANE	388	214	174	342	179	163	1.13	46	168	18
BIJELO POLJE	592	309	283	405	220	185	1.46	187	233	3
BUDVA	256	140	116	76	42	34	3.37	180	89	0
DANILOVGRAD	151	77	74	133	70	63	1.14	18	66	18
ŽABLJAK	30	12	18	32	14	18	0.94	-2	11	2
KOLAŠIN	65	33	32	94	44	50	0.69	-29	38	2
KOTOR	218	121	97	220	110	110	0.99	-2	85	17
MOJKOVAC	76	39	37	105	49	56	0.72	-29	29	0
NIKŠIĆ	669	397	272	590	308	282	1.13	79	335	20
PLAV	132	75	57	94	52	42	1.40	38	62	0
PLUŽINE	18	6	12	49	25	24	0.37	-31	18	0
PLJEVLJA	219	121	98	303	167	136	0.72	-84	126	22
PODGORICA	2409	1248	1161	1113	556	557	2.16	1296	1124	66
ROŽAJE	398	199	199	109	61	48	3.65	289	140	29
TIVAT	155	75	80	116	58	58	1.34	39	54	2
ULCINJ	204	110	94	151	86	65	1.35	53	107	11
HERCEG NOVI	307	165	142	231	109	122	1.33	76	152	29
CETINJE	138	68	70	160	85	75	0.86	-22	103	0
ŠAVNIK	15	9	6	25	10	15	0.60	-10	15	0

¹⁾ Prethodni podaci¹⁾ Preliminary data

KRETANJE STANOVNIŠTVA UNUTAR CRNE GORE PO OPŠTINAMA
MIGRATIONS INSIDE MONTENEGRO BY MUNICIPALITY

I – X 2009. god.¹⁾

OPŠTINE / MUNICIPALITIES	DOSELJENI / MOVED IN	ODSELJENI / MOVED OUT OF	SALDO / BALLANCE
UKUPNO / TOTAL	3202	3202	0
ANDRIJEVICA	39	62	-23
BAR	484	199	285
BERANE	159	311	-152
BIJELO POLJE	128	421	-293
BUDVA	273	94	179
DANILOVGRAD	125	105	20
ŽABLJAK	25	46	-21
KOLAŠIN	18	91	-73
KOTOR	98	118	-20
MOJKOVAC	43	98	-55
NIKŠIĆ	194	345	-151
PLAV	26	93	-67
PLUŽINE	9	76	-67
PLJEVLJA	47	170	-123
PODGORICA	1061	425	636
ROŽAJE	38	164	-126
TIVAT	106	55	51
ULCINJ	119	38	81
HERCEG NOVI	148	107	41
CETINJE	53	118	-65
ŠAVNIK	9	66	-57

¹⁾ Prethodni podaci

¹⁾ Preliminary data

ZAPOSLENI PO SEKTORIMA DJELATNOSTI
EMPLOYEES BY ACTIVITY SECTORS

	Ukupno <i>Total</i>	PO SEKTORIMA / BY ACTIVITY SECTORS						
		poljoprivreda šumarstvo i vodoprivreda <i>Agriculture, forestry and water supply</i>	ribarstvo <i>Fishing</i>	vađenje ruda i kamena <i>Mining and quarrying</i>	prerađivačka industrija <i>Manufacturing</i>	proizvodnja elekt. energije <i>Electricity supply</i>	građevinarstvo <i>Construction</i>	trgovina na veliko i malo, opravka <i>Wholesale and retail trade, repair</i>
Ø 2006	150800	2607	115	4159	26065	5627	6853	29602
Ø 2007	156408	2586	112	3753	25697	5594	6647	30750
Ø 2008	166221	2651	129	3721	24335	6042	8831	31854
Ø I – X 2008	165641	2640	129	3715	24385	6022	8664	31819
Ø I – X 2009	174523	2698	120	3212	22204	5523	10053	35774
2008								
X	168583	2681	129	3726	24089	6085	9693	32158
XI	169079	2681	129	3726	24405	6125	9653	32149
XII	169160	2731	129	3776	23763	6159	9678	31917
2009 ¹⁾								
I	169305	2724	129	3626	23440	6153	9569	32147
II	169670	2889	129	3478	23231	5736	9990	32601
III	170607	2617	125	3182	22944	5511	9303	35153
IV	172549	2617	123	3162	22835	5501	9915	35517
V	174218	2657	123	3115	22412	5353	10489	35693
VI	178839	2654	113	3103	22449	5523	10687	36180
VII	178622	2630	115	3097	21929	5552	10340	36139
VIII	179016	2740	119	3197	21300	5358	10278	37823
IX	176936	2734	114	3081	20807	5273	9998	38264
X	175468	2717	114	3081	20694	5273	9965	38226
I- X 2009/I- X 2008	105.4	102.2	93.0	86.5	91.1	91.7	116.0	112.4

/nastavak/

/ continued /

	PO SEKTORIMA / BY ACTIVITY SECTORS							
	hoteli i restorani <i>Hotels and restaurants</i>	saobraćaj, skladištenje i veze <i>Transport, storage and communi-cations</i>	finansijsko posredovnje <i>Financial activities</i>	aktivnosti u vezi s nekretninama <i>Real estate activities, renting</i>	državna uprava i obav. socijalno osiguranje <i>Public administration and social insurance</i>	obrazo- vanje <i>Education</i>	zdravstveno i socijalno osiguranje <i>Health and social work</i>	ostale komu- nalne, društ. i lične usluge <i>Other community, social & pers. service activities</i>
Ø 2006	10928	12133	3114	5905	10345	12846	12012	8489
Ø 2007	11307	11358	3143	5354	17575	12687	12004	7841
Ø 2008	14641	12798	3476	5631	18643	12892	12356	8221
Ø I – X 2008	14500	12684	3464	5583	18620	12896	12330	8190
Ø I – X 2009	17043	13962	3704	7176	18863	13019	12246	8926
2008								
X	15278	13117	3493	5840	18705	12815	12480	8294
XI	15188	13293	3518	5840	18781	12850	12440	8301
XII	15507	13448	3558	5905	18732	12892	12529	8436
2009 ¹⁾								
I	15432	13638	3603	5966	18764	12969	12606	8539
II	16046	13908	3426	6139	18717	13108	12118	8154
III	14796	13923	3623	6670	18837	13069	12142	8712
IV	15600	14069	3603	6799	18804	13070	12184	8750
V	16861	14274	3594	6759	18906	13092	12164	8726
VI	19862	14767	3644	7017	18824	12993	12213	8810
VII	20049	14497	3718	7709	18845	12919	12205	8878
VIII	19062	13640	3803	8050	18946	12938	12245	8517
IX	16940	13475	4013	8335	19005	13023	12282	9592
X	15777	13425	4008	8314	18983	13013	12296	9582
I- X 2009/I- X 2008	117.5	110.1	106.9	128.5	101.3	101.0	99.3	109.0

¹⁾ Vidi metodološka objašnjenja na strani 47

ZAPOSLENI PO OPŠTINAMA / EMPLOYEES BY MUNICIPALITY

	Opštine / Municipalities										
	Andrijevica	Bar	Berane	Bijelo Polje	Budva	Danilovgrad	Žabljak	Kolašin	Kotor	Mojkovac	Nikšić
Ø 2006	540	11105	5218	7316	9308	2541	805	1410	5547	1495	17616
Ø 2007	528	11125	5803	8060	8323	2496	937	1591	5983	1503	17481
Ø 2008	537	11876	6092	8628	8951	2969	986	1728	6378	1638	18312
Ø I – X 2008	537	11876	6092	8597	8987	2951	981	1712	6358	1621	18227
Ø I – X 2009	537	12388	6091	8691	10711	3145	1003	1849	6738	1738	18758
2008											
X	533	11886	6057	8745	8940	3054	990	1799	6458	1678	18653
XI	537	11898	6113	8801	8764	3065	986	1809	6479	1720	18804
XII	536	11856	6077	8780	8775	3049	1039	1810	6486	1725	18656
2009 ¹⁾											
I	534	11879	6088	8850	8674	3082	1034	1842	6470	1720	18761
II	536	11911	6120	8852	8958	3086	983	1847	6451	1681	18684
III	536	11933	6151	8790	9205	3094	1004	1831	6495	1652	18803
IV	533	12251	6156	8868	9920	3120	987	1836	6546	1701	18907
V	537	12221	6131	8704	10546	3111	1004	1845	6690	1692	18679
VI	537	13056	6083	8544	12459	3148	1003	1857	7011	1781	18758
VII	537	12892	6086	8639	12334	3182	1007	1865	6983	1777	18738
VIII	540	12959	6040	8610	12545	3206	1023	1857	7000	1775	18740
IX	540	12460	6034	8563	11647	3231	998	1868	6903	1802	18745
X	543	12314	6025	8491	10823	3192	984	1839	6826	1802	18758
I- X 2009/I- X 2008	100.0	104.3	99.9	101.1	119.2	106.6	102.2	108.0	106.0	107.2	102.9

/nastavak/

/ continued /

	Opštine / Municipalities									
	Plav	Plužine	Pljevlja	Podgorica	Rožaje	Tivat	Ulcinj	Herceg Novi	Cetinje	Šavnik
Ø 2006	1470	913	7233	53103	3292	2940	3994	10130	4545	279
Ø 2007	1425	952	7100	56118	3148	3632	3873	11149	4890	291
Ø 2008	1411	938	7286	61032	3064	3755	4185	11763	4396	296
Ø I – X 2008	1418	935	7278	60603	3052	3745	4169	11772	4433	299
Ø I – X 2009	1400	940	7313	64668	3194	4137	4410	12321	4196	295
2008										
X	1384	943	7312	62668	3118	3797	4255	11852	4160	301
XI	1380	965	7357	63058	3121	3808	4275	11672	4187	280
XII	1375	937	7298	63282	3125	3808	4262	11766	4234	284
2009 ¹⁾										
I	1375	939	7264	63343	3133	3833	4273	11720	4204	287
II	1337	938	7317	63499	3158	3886	4310	11734	4099	283
III	1447	927	7321	63888	3164	3846	4248	11777	4216	279
IV	1394	927	7293	64364	3210	4020	4299	11870	4063	284
V	1377	945	7358	64800	3243	4213	4353	12271	4211	287
VI	1387	948	7310	64996	3244	4279	4709	13204	4241	284
VII	1389	916	7307	65329	3193	4402	4498	12996	4238	314
VIII	1432	959	7304	65408	3186	4406	4518	12950	4240	318
IX	1431	953	7327	65469	3199	4292	4465	12474	4218	317
X	1427	948	7331	65588	3211	4191	4431	12214	4230	300
I- X 2009/I- X 2008	98.7	100.5	100.5	106.7	104.7	110.5	105.8	104.7	94.7	98.7

¹⁾ Vidi metodološka objašnjenja na strani 47¹⁾ See methodological explanation on page 47

NEZAPOSLENA LICA¹⁾ / UNEMPLOYED PERSONS¹⁾

	Stanje krajem perioda / Situation at the end of the period						U toku perioda / In the middle of the period		
	lica koja traže zaposlenje ²⁾ ukupno <i>Persons looking for job Total</i>	nezaposlena lica koja prvi put traže zaposlenje <i>Unemployed persons first time looking for job</i>	nezaposlena lica bez kvalifikacija <i>Unqualified unemployed persons</i>	lica koja primaju novčanu naknadu ³⁾ <i>Persons receiving unemployment benefits</i>	nezaposlene žene <i>unemployed women</i>		prijavilo se za zapošljavanje ⁴⁾ <i>Reported for employment</i>	zaposleni prema evidenciji Zavoda za zapošljavanje Crne Gore <i>Employees according to the records of Employment Agency of Montenegro</i>	prestanak vođenja evidencije ⁵⁾ <i>Records stopped to be kept</i>
					Svega <i>Total</i>	bez kvalifikacija <i>Unqualified</i>			
Ø 2006	43190	14855	11550	7833	19949	4720	2630	1955	3581
Ø 2007	34396	10069	8838	8654	15513	3414	2187	2658	2911
Ø 2008	29514	7375	7823	9507	13193	2925	2090	2261	2386
Ø I – X 2008	29715	7496	7859	9308	13265	2923	2104	2473	2430
Ø I – X 2009	28087	6331	7370	12403	12578	2752	2040	1305	2079
2007									
X	31569	8673	7994	8917	14253	3020	2961	2679	2591
XI	31787	8579	8021	9203	14279	3022	2616	2808	2465
XII	31469	8388	7994	9206	14017	2966	1722	2266	2235
2008									
X	28666	6943	7593	10125	13064	2894	2855	1489	2435
XI	28645	6885	7629	10537	12913	2932	2136	1421	2156
XII	28378	6664	7659	10474	12758	2934	1900	985	2175
2009									
I	28921	6624	7839	11983	12962	3007	2123	720	1684
II	29305	6724	7952	13133	13079	3041	2290	1179	1922
III	29170	6733	7870	12294	12905	2932	2447	1345	2636
IV	28616	6500	7650	12144	12678	2868	1753	1456	2277
V	27785	6115	7444	12265	12306	2748	1624	1616	2507
VI	27133	5929	7135	12644	12038	2638	1807	1950	2545
VII	27048	6012	6973	12530	12000	2535	1915	1504	2021
VIII	26844	6023	6838	12273	12096	2510	1462	841	1740
IX	27313	6208	6803	12387	12512	2548	2279	1089	1872
X	28731	6331	7370	12403	12578	2752	2040	1305	2079
I-X 2009/I-X 2008	94.5	84.5	93.8	133.2	94.8	94.1	97.0	52.8	85.6

¹⁾ IZVOR: Zavod za zapošljavanje Crne Gore²⁾ Shodno članu 4 Zakona o zapošljavanju („Sl.list RCG”, br. 5/02)³⁾ Shodno članu 48 Zakona o zapošljavanju⁴⁾ Nezaposlene osobe koje su se tokom izvještajnog mjeseca prijavile na evidenciju Zavoda za zapošljavanje⁵⁾ Shodno članu 86 Zakona o zapošljavanju¹⁾ SOURCE: Employment Agency of Montenegro²⁾ According to the article 4 of the Law on Employment („Official Gazzete of RoM”, No. 5/02 and 79/04)³⁾ According to the Article 48 of the Law on Employment⁴⁾ Unemployed persons who in the reference month reported to the records of the Employment Agency of Montenegro⁵⁾ According to the Article 86 of the Law on Employment

PROSJEČNE ZARADE PO SEKTORIMA DJELATNOSTI
AVERAGE WAGES BY ACTIVITY SECTORS

u EUR

in EUR

	Ukupno <i>Total</i>	PO SEKTORIMA / BY ACTIVITY SECTORS						
		poljop. šumarstvo i vodoprivreda <i>Agriculture, forestry and water supply</i>	ribarstvo <i>Fishing</i>	vađenje ruda i kamena <i>Mining and quarrying</i>	prerađivačka industrija <i>Manufacturing</i>	proizvodnja električne energije <i>Electricity supply</i>	građevni- narstvo <i>Construc- tion</i>	trgovina na veliko i malo, opravka <i>Wholesale and retail trade, repair</i>
Ø 2007	497	446	196	725	530	701	430	301
Ø 2008	609	584	197	833	615	783	519	345
Ø I – X 2008	603	570	195	829	608	777	516	340
Ø I – X 2009	643	682	210	766	612	826	558	376
2008								
X	621	642	195	879	617	825	539	354
XI	629	626	214	881	660	838	517	356
XII	651	667	198	835	662	791	546	390
2009								
I	655	659	226	851	672	814	527	364
II	650	591	187	758	645	916	598	378
III	642	667	192	762	602	784	577	371
IV	647	641	276	824	555	700	594	391
V	651	674	209	780	618	793	572	379
VI	648	685	201	775	608	801	520	376
VII	636	665	184	718	597	895	550	379
VIII	641	722	195	731	611	882	543	392
IX	631	760	206	717	598	812	551	362
X	633	753	194	731	600	815	547	368
I-X 2009/I-X 2008	106.6	119.6	107.7	92.4	100.7	106.3	108.1	110.6

/nastavak/

/ continued /

	PO SEKTORIMA / BY ACTIVITY SECTORS							
	hoteli i restorani <i>Hotels and restaurants</i>	saobraćaj, skladišt. i veze <i>Transport, storage and communi- cations</i>	finansijsko posredovanje <i>Financial activities</i>	aktivnosti u vezi s nekretninama <i>Real estate activities, renting</i>	državna uprava i obav. socijalno osiguranje <i>Public administration and social insurance</i>	obrazo- vanje <i>Education</i>	zdravstveno i socijalno osiguranje <i>Health and social work</i>	ostale komunalne, društvene i lične usluge <i>Other community, social & personal service activities</i>
Ø 2007	388	659	1156	438	506	433	427	431
Ø 2008	445	757	1268	531	669	570	576	532
Ø I – X 2008	439	750	1263	518	665	569	565	524
Ø I – X 2009	456	843	1244	578	675	593	655	565
2008								
X	436	787	1219	535	683	575	622	556
XI	461	753	1223	572	685	575	628	572
XII	496	831	1364	625	697	575	628	573
2009								
I	447	861	1247	558	687	584	638	567
II	450	798	1189	553	676	593	641	577
III	476	798	1251	573	688	600	646	589
IV	470	872	1297	581	676	599	647	575
V	518	900	1305	587	684	600	664	545
VI	472	895	1341	597	685	594	674	551
VII	461	830	1201	587	675	591	658	561
VIII	448	818	1204	596	663	585	669	570
IX	423	886	1198	589	662	593	654	566
X	419	799	1224	559	659	594	565	547
I-X 2009/I-X 2008	103.9	112.4	98.5	111.6	101.5	104.2	115.9	107.8

PROSJEČNE ZARADE BEZ POREZA I DOPRINOSA PO SEKTORIMA DJELATNOSTI
AVERAGE WAGES WITHOUT TAXES AND CONTRIBUTIONS BY ACTIVITY SECTOR

u EUR	in EUR							
	Ukupno <i>Total</i>	PO SEKTORIMA / BY ACTIVITY SECTORS						
		poljoprivreda, šumarstvo i vodoprivreda <i>Agriculture, forestry and water supply</i>	ribarstvo <i>Fishing</i>	vađenje ruda i kamenja <i>Mining and quarrying</i>	prerađivačka industrija <i>Manufacturing</i>	proizvodnja elekt. energije <i>Electricity supply</i>	građevni- narstvo <i>Construction</i>	trgovina na veliko i malo, opravka <i>Wholesale and retail trade, repair</i>
Ø 2007	338	305	140	493	358	469	295	208
Ø 2008	416	398	141	574	418	530	353	242
Ø I – X 2008	412	389	140	571	413	526	351	238
Ø I – X 2009	462	485	156	551	440	591	402	273
2008								
X	423	438	140	606	419	558	364	248
XI	428	428	154	608	449	565	349	249
XII	443	456	142	577	450	532	369	273
2009								
I	470	459	165	614	483	582	379	263
II	467	419	139	544	464	654	431	274
III	461	475	143	548	433	561	416	269
IV	465	457	205	593	400	502	428	284
V	468	480	156	561	445	569	413	275
VI	466	487	150	557	438	574	376	273
VII	457	474	138	515	430	641	397	275
VIII	461	516	146	525	440	631	391	285
IX	454	543	154	516	430	581	397	263
X	456	537	145	526	432	584	395	268
I-X 2009/I-X 2008	112.1	124.7	111.4	96.5	106.5	112.4	114.5	114.7

/nastavak/

/ continued /

	PO SEKTORIMA / BY ACTIVITY SECTORS							
	hoteli i restorani <i>Hotels and restaura- nts</i>	saobraćaj, skladištenje i veze <i>Transport, storage and communica- tions</i>	finansijsko posredovanje <i>Financial activities</i>	aktivnosti u vezi s nekretninama <i>Real estate activities, renting</i>	državna uprava i obav. socijalno osiguranje <i>Public administration and social insurance</i>	obrazovanje <i>Education</i>	zdravstveno i socijalno osiguranje <i>Health and social work</i>	ostale komunalne, društvene i lične usluge <i>Other community, social & personal service activities</i>
Ø 2007	264	439	770	299	344	295	296	296
Ø 2008	307	513	854	363	454	388	395	370
Ø I – X 2008	303	508	850	355	451	387	388	364
Ø I – X 2009	330	603	888	417	485	427	473	407
2008								
X	301	533	824	365	461	390	427	385
XI	318	510	825	390	463	390	432	396
XII	342	563	920	426	471	390	432	397
2009								
I	322	612	888	402	493	419	459	406
II	326	570	849	399	485	427	463	415
III	345	570	894	414	494	432	468	424
IV	340	623	926	419	486	431	468	413
V	375	644	930	424	492	432	479	392
VI	342	641	956	432	492	427	487	397
VII	334	594	858	424	485	425	475	405
VIII	325	586	861	430	477	421	483	412
IX	307	635	855	425	476	427	473	409
X	304	573	874	403	473	427	474	396
I-X 2009/I-X 2008	108.9	118.7	104.5	117.5	107.5	110.3	121.9	111.8

INDEKSI PROSJEČNIH ZARADA PO SEKTORIMA DJELATNOSTI
INDICES OF AVERAGE WAGES BY ACTIVITY SECTOR

Ø 2008=100

	Ukupno <i>Total</i>	PO SEKTORIMA / BY ACTIVITY SECTORS						
		poljoprivreda, šumarstvo i vodoprivreda <i>Agriculture, forestry and water supply</i>	ribarstvo <i>Fishing</i>	vađenje ruda i kamena <i>Mining and quarrying</i>	prerađivačka industrija <i>Manufacturing</i>	proizvodnja električne energije <i>Electricity supply</i>	građevinarstvo <i>Construction</i>	trgovina na veliko i malo, opravka <i>Wholesale and retail trade, repair</i>
Ø 2007	81.6	76.4	99.5	87.0	86.2	89.5	82.9	87.2
Ø 2008	100.0	100.0	100.0	100.0	100.0	100.0	100.0	100.0
Ø I – X 2008	99.0	97.6	99.0	99.5	98.9	99.2	99.4	98.6
Ø I – X 2009	105.6	116.8	106.6	92.0	99.5	105.5	107.5	109.0
2008								
X	102.0	109.9	99.0	105.5	100.3	105.4	103.9	102.6
XI	103.3	107.2	108.6	105.8	107.3	107.0	99.6	103.2
XII	106.9	114.2	100.5	100.2	107.6	101.0	105.2	113.0
2009								
I	107.6	112.8	114.7	102.2	109.3	104.0	101.5	105.5
II	106.7	101.2	99.0	91.0	104.9	117.0	115.2	109.6
III	105.4	114.2	97.5	91.5	97.9	100.1	111.2	107.5
IV	106.2	109.8	140.1	98.9	90.2	89.4	114.5	113.3
V	106.9	115.4	106.1	93.6	100.5	101.3	110.2	109.9
VI	106.4	117.3	102.0	93.0	98.9	102.3	100.2	109.0
VII	104.4	113.9	93.4	86.2	97.1	114.3	106.0	109.9
VIII	105.3	123.6	99.0	87.8	99.3	112.6	104.6	113.6
IX	103.6	130.1	104.6	86.1	97.2	103.7	106.2	104.9
X	103.9	128.9	98.5	87.8	97.6	104.1	105.4	106.7
I-X 2009/I-X 2008	106.6	119.6	107.7	92.4	100.7	106.3	108.1	110.6

/nastavak/

/ continued /

	PO SEKTORIMA / BY ACTIVITY SECTORS							
	hoteli i restorani <i>Hotels and restaurants</i>	saobraćaj, skladištenje i veze <i>Transport, storage and communications</i>	financijsko posredovanje <i>Financial activities</i>	aktivnosti u vezi s nekretninama <i>Real estate activities, renting</i>	državna uprava i obav. socijalno osiguranje <i>Public administration and social insurance</i>	obrazo- vanje <i>Education</i>	zdravstveno i socijalno osiguranje <i>Health and social work</i>	ostale komunalne, društvene i lične usluge <i>Other community, social & personal service activities</i>
Ø 2007	87.2	87.1	91.2	82.5	75.6	76.0	74.1	81.0
Ø 2008	100.0	100.0	100.0	100.0	100.0	100.0	100.0	100.0
Ø I – X 2008	98.7	99.1	99.6	97.6	99.4	99.8	98.1	98.5
Ø I – X 2009	102.5	111.4	98.1	108.9	100.9	104.0	113.7	106.2
2008								
X	98.0	104.0	96.1	100.8	102.1	100.9	108.0	104.5
XI	103.6	99.5	96.5	107.7	102.4	100.9	109.0	107.5
XII	111.5	109.8	107.6	117.7	104.2	100.9	109.0	107.7
2009								
I	100.4	113.7	98.3	105.1	102.7	102.5	110.8	106.6
II	101.1	105.4	93.8	104.1	101.0	104.0	111.3	108.5
III	107.0	105.4	98.7	107.9	102.8	105.3	112.2	110.7
IV	105.6	115.2	102.3	109.4	101.0	105.1	112.3	108.1
V	116.4	118.9	102.9	110.5	102.2	105.3	115.3	102.4
VI	106.1	118.2	105.8	112.4	102.4	104.2	117.0	103.6
VII	103.6	109.6	94.7	110.5	100.9	103.7	114.2	105.5
VIII	100.7	108.1	95.0	112.2	99.1	102.6	116.1	107.1
IX	95.1	117.0	94.5	110.9	98.9	104.0	100.0	106.4
X	94.2	105.5	96.5	105.3	98.5	104.2	98.1	102.8
I-X 2009/I-X 2008	103.9	112.4	98.5	111.6	101.5	104.2	115.9	107.8

INDEKSI PROSJEČNIH ZARADA BEZ POREZA I DOPRINOSA PO SEKTORIMA DJELATNOSTI
INDICES OF AVERAGE WAGES WITHOUT TAXES AND CONTRIBUTIONS BY ACTIVITY SECTOR

Ø 2008=100

	Ukupno <i>Total</i>	PO SEKTORIMA / BY ACTIVITY SECTORS						
		poljoprivreda, šumarstvo i vodoprivreda <i>Agriculture, forestry and water supply</i>	ribarstvo <i>Fishing</i>	vađenje ruda i kamenja <i>Mining and quarrying</i>	prerađivačka industrija <i>Manufacturing</i>	proizvodnja električne energije <i>Electricity supply</i>	građevinarstvo <i>Construction</i>	trgovina na veliko i malo opravka <i>Wholesale and retail trade, repair</i>
Ø 2007	81.3	76.6	99.3	85.9	85.6	88.5	83.6	86.0
Ø 2008	100.0	100.0	100.0	100.0	100.0	100.0	100.0	100.0
Ø I – X 2008	99.0	97.7	99.3	99.5	98.8	99.2	99.4	98.3
Ø I – X 2009	111.0	121.9	110.6	96.0	105.3	111.5	113.9	112.8
2008								
X	101.7	110.1	99.3	105.6	100.2	105.3	103.1	102.5
XI	102.9	107.5	109.2	105.9	107.4	106.6	98.9	102.9
XII	106.5	114.6	100.7	100.5	107.7	100.4	104.5	112.8
2009								
I	113.0	115.3	117.0	107.0	115.6	109.8	107.4	108.7
II	112.3	105.3	98.6	94.8	111.0	123.4	122.1	113.2
III	110.8	119.3	101.4	95.5	103.6	105.9	117.8	111.2
IV	111.8	114.8	145.4	103.3	95.7	94.7	121.2	117.4
V	112.5	120.6	110.6	97.7	106.5	107.4	117.0	113.6
VI	112.0	122.4	106.4	94.0	104.8	108.3	106.5	112.8
VII	109.9	119.1	97.9	89.7	102.9	120.9	112.5	113.6
VIII	110.8	129.6	103.5	91.5	105.3	119.1	110.8	117.8
IX	109.1	136.4	109.2	89.9	102.9	109.6	112.5	108.7
X	109.6	134.9	102.8	91.6	103.3	110.2	111.9	110.7
I-X 2009/I-X 2008	121.1	124.7	111.4	96.5	106.5	112.4	114.5	114.7

/nastavak/

/ continued /

	PO SEKTORIMA / BY ACTIVITY SECTORS							
	hoteli i restorani <i>Hotels and restaurants</i>	saobraćaj, skladištenje i veze <i>Transport, storage and communications</i>	finansijsko posred. <i>Financial activities</i>	aktivnosti u vezi s nekretninama <i>Real estate activities, renting</i>	državna uprava i obav. socijalno osiguranje <i>Public administration and social insurance</i>	obrazovanje <i>Education</i>	zdravstveno i socijalno osiguranje <i>Health and social work</i>	ostale komunalne, društvene i lične usluge <i>Other community, social & personal service activities</i>
Ø 2007	86.0	85.6	90.2	82.4	75.8	76.0	74.9	80.0
Ø 2008	100.0	100.0	100.0	100.0	100.0	100.0	100.0	100.0
Ø I – X 2008	98.7	99.0	99.5	97.8	99.3	99.7	98.2	98.4
Ø I – X 2009	107.5	117.5	104.0	114.9	106.8	110.0	119.7	110.0
2008								
X	98.0	103.9	96.5	100.6	101.5	100.5	108.1	104.1
XI	103.6	99.4	96.6	107.4	102.0	100.5	109.4	107.0
XII	111.4	109.7	107.7	117.4	103.7	100.5	109.4	107.3
2009								
I	104.9	119.3	104.0	110.7	108.6	108.0	116.2	109.7
II	106.2	111.1	99.4	109.9	106.8	110.1	117.2	112.2
III	112.4	111.1	104.7	114.1	108.8	111.3	118.5	114.6
IV	99.0	121.4	108.4	115.4	107.0	111.1	118.5	111.6
V	122.1	125.5	108.9	116.8	108.4	111.3	121.3	105.9
VI	111.4	125.0	111.9	119.0	108.4	110.1	123.3	107.3
VII	108.8	115.8	100.5	116.8	106.8	109.5	120.3	109.5
VIII	105.9	114.2	100.8	118.5	105.1	108.5	122.3	111.4
IX	100.0	123.8	100.1	117.1	104.8	110.1	119.7	100.5
X	99.0	111.7	102.3	111.0	104.2	110.1	120.0	107.0
I-X 2009/I-X 2008	108.9	118.7	104.5	117.5	107.5	110.3	121.9	111.8

PROSJEČNE ZARADE PO OPŠTINAMA / AVERAGE WAGES BY MUNICIPALITY

u EUR	Opštine / Municipalities											in EUR
	Andrijevica	Bar	Berane	Bijelo Polje	Budva	Danilovgrad	Žabljak	Kolašin	Kotor	Mojkovac	Nikšić	
Ø 2007	398	445	407	406	536	419	398	437	498	422	555	
Ø 2008	492	545	531	517	642	514	539	552	612	530	642	
Ø I – X 2008	488	541	524	513	634	507	545	542	604	526	641	
Ø I – X 2009	528	562	559	531	629	538	573	602	672	568	617	
2008												
X	505	558	545	528	606	532	499	557	635	529	649	
XI	504	555	563	523	655	530	498	615	642	552	661	
XII	520	575	572	547	721	559	533	596	669	543	631	
2009												
I	518	561	582	546	627	579	610	598	666	559	648	
II	556	565	555	555	687	553	570	570	669	583	670	
III	516	587	574	519	701	522	561	605	687	541	602	
IV	523	574	550	525	676	578	508	616	698	533	624	
V	525	562	573	529	681	546	586	595	681	558	589	
VI	534	561	566	534	603	536	605	639	678	642	606	
VII	531	553	550	534	616	496	556	656	662	573	610	
VIII	529	555	550	520	592	547	574	565	664	572	621	
IX	521	543	553	519	593	548	564	574	652	568	579	
X	531	554	540	535	573	496	598	586	666	572	642	
I-X 2009/I-X 2008	108.2	103.9	106.7	103.5	99.2	106.1	105.1	111.1	111.3	108.0	114.0	

/nastavak/

/continued/

	Opštine / Municipalities									
	Plav	Plužine	Pljevlja	Podgorica	Rožaje	Tivat	Ulcinj	Herceg Novi	Cetinje	Šavnik
Ø 2007	376	444	492	548	456	486	354	408	366	420
Ø 2008	493	549	614	676	561	575	460	499	442	526
Ø I – X 2008	485	531	607	670	556	572	459	492	422	517
Ø I – X 2009	533	644	670	728	603	630	487	509	575	543
2008										
X	521	534	656	682	570	563	464	523	584	544
XI	527	707	641	688	577	586	462	521	583	548
XII	546	629	660	725	591	598	467	546	592	591
2009										
I	504	613	648	753	597	641	490	510	582	550
II	571	584	651	725	595	624	488	500	578	552
III	551	717	695	713	609	656	494	500	580	535
IV	526	599	706	724	609	626	455	521	573	520
V	518	794	683	732	608	678	481	560	585	538
VI	518	590	692	733	619	631	488	525	583	542
VII	519	655	660	726	610	605	481	500	557	530
VIII	547	669	660	736	598	597	532	499	572	550
IX	545	659	658	723	584	626	455	503	572	547
X	536	635	656	715	608	631	497	479	569	564
I-X 2009/I-X 2008	109.9	121.3	110.4	108.7	108.5	110.1	106.1	103.5	136.3	105.0

PROSJEČNE ZARADE BEZ POREZA I DOPRINOSA PO OPŠTINAMA
AVERAGE WAGES WITHOUT TAXES AND CONTRIBUTIONS BY ACTIVITY SECTOR

u EUR	in EUR										
	Opštine / Municipalities										
	Andrijevica	Bar	Berane	Bijelo Polje	Budva	Danilovgrad	Žabljak	Kolašin	Kotor	Mojkovac	Nikšić
Ø 2007	271	302	278	277	361	285	272	296	339	288	377
Ø 2008	336	371	361	353	439	352	368	376	419	361	439
Ø I – X 2008	333	368	357	350	434	348	372	369	413	358	438
Ø I – X 2009	380	404	403	383	453	388	412	433	485	409	445
2008											
X	343	380	369	359	417	363	341	378	433	360	444
XI	344	377	382	356	447	363	341	417	438	376	450
XII	354	392	389	374	492	383	362	405	456	371	433
2009											
I	371	398	415	390	446	410	438	428	479	400	466
II	399	407	399	399	493	397	411	410	483	418	483
III	372	421	416	375	504	376	405	435	494	390	435
IV	376	413	399	379	485	416	367	444	505	384	450
V	378	405	413	382	490	394	423	428	492	402	425
VI	384	405	409	386	434	387	436	460	491	462	438
VII	383	400	397	386	444	359	400	472	478	414	439
VIII	381	399	396	376	428	394	413	407	479	412	448
IX	375	392	401	375	428	395	405	413	471	408	418
X	382	399	389	387	414	359	430	422	478	411	464
I-X 2009/I-X 2008	114.1	109.8	112.9	109.4	104.4	111.5	110.8	117.3	117.4	114.2	101.6

/nastavak/

/ continued /

	Opštine / Municipalities									
	Plav	Plužine	Pljevlja	Podgorica	Rožaje	Tivat	Ulcinj	Herceg Novi	Cetinje	Šavnik
Ø 2007	255	301	334	371	310	331	243	281	251	285
Ø 2008	332	377	420	460	382	392	315	344	300	358
Ø I – X 2008	326	364	415	456	379	389	315	339	287	353
Ø I – X 2009	384	462	482	522	435	454	352	367	414	391
2008										
X	348	364	448	463	388	385	318	359	393	370
XI	359	486	439	467	392	402	317	362	396	372
XII	372	428	449	493	401	407	321	374	401	401
2009										
I	362	442	466	540	430	460	354	369	419	395
II	410	421	467	520	429	449	352	361	416	398
III	397	515	500	512	438	472	357	360	419	385
IV	379	430	508	519	438	452	330	377	413	374
V	372	569	490	525	438	487	348	403	423	388
VI	377	422	496	526	446	455	353	379	420	390
VII	375	471	475	521	440	439	347	361	402	381
VIII	394	480	475	529	430	429	383	362	412	396
IX	392	473	473	519	421	450	329	363	412	394
X	386	455	472	513	437	454	359	348	411	406
I-X 2009/I-X 2008	117.8	126.9	116.1	114.5	114.8	116.7	111.7	108.3	144.3	110.8

INDEKSI CIJENA PROIZVOĐAČA INDUSTRIJSKIH PROIZVODA
PRODUCERS PRICE INDICES FOR INDUSTRIAL PRODUCTS

	2007 2006	2008 2007	I- X 2009 I- X 2008	Ø 2008 = 100					
				2008			2009		
				X	XI	XII	I	II	III
Ukupno	108.5	114.0	96.3	104.0	103.4	99.2	98.1	98.1	96.6
Vađenje ruda i kamena	110.0	114.0	103.5	104.2	103.9	103.4	101.8	103.2	103.4
Prerađivačka industrija	106.6	111.3	90.6	104.6	103.7	94.8	93.4	93.2	90.9
Proizvodnja el. energije, gasa i vode	113.3	121.4	110.3	102.4	102.4	110.2	110.2	110.2	110.2
Vađenje ruda i kamena	110.0	114.0	103.5	104.2	103.9	103.4	101.8	103.2	103.4
Vađenje energetske sirovine	112.5	117.9	101.2	101.5	101.5	101.5	101.5	101.5	101.5
Vađenje kamenog uglja, lignita i treseta	112.5	117.9	101.2	101.5	101.5	101.5	101.5	101.5	101.5
Vađenje ostalih sirovina i materijala	108.1	110.9	105.3	106.2	105.8	104.9	102.1	104.6	104.8
Vađenje ruda metala	108.8	111.2	106.7	106.9	106.4	105.2	102.0	105.0	105.4
Vađenje ostalih ruda i kamena	105.1	109.9	99.3	103.3	103.3	103.3	102.8	102.8	102.4
Prerađivačka industrija	106.6	111.3	90.6	104.6	103.7	94.8	93.4	93.2	90.9
Prehrambeni proizvodi, pića i duvan	104.0	113.0	103.7	101.6	101.5	101.2	101.2	103.2	103.8
Proizv. prehrambenih proizvoda i pića	105.0	115.2	102.3	101.8	101.7	101.4	101.3	101.6	102.3
Proizvodnja duvanskih proizvoda	98.0	100.0	113.9	100.0	100.0	100.0	100.0	115.5	115.5
Proizvodnja tekstila i tekstilnih proizvoda	105.8	104.6	97.2	100.6	94.9	94.9	97.2	100.1	100.2
Proizvodnja tekstilnih prediva i tkanina	100.9	101.2	99.8	99.7	99.7	99.7	99.7	99.7	99.5
Proizvodnja odjevnih predmeta i krzna	115.0	111.1	92.5	102.3	86.0	86.1	92.7	101.0	101.4
Proizvodnja kože i predmeta od kože	100.0	101.4	105.7	99.1	104.7	104.7	104.7	104.7	104.7
Proizvodnja predmeta od kože i obuće	100.0	101.4	105.7	99.1	104.7	104.7	104.7	104.7	104.7
Prerada drveta i proizvoda od drveta	101.2	109.6	103.8	101.5	101.5	101.5	100.8	106.2	104.7
Proizvodi od drveta, plute i slično	101.2	109.6	103.8	101.5	101.5	101.5	100.8	106.2	104.7
Proizvodnja papira, izdavanje i štampanje	100.1	118.7	99.6	99.6	99.6	99.6	99.6	99.6	99.6
Proizv. celuloze, papira i proizv. od papira	100.2	100.7	101.2	100.9	100.9	100.9	100.9	100.9	100.9
Izdavanje, štampanje i reprodukcija	100.0	127.3	99.0	99.2	99.2	99.2	99.2	99.2	99.2
Prerada hemijskih proizvoda i vlakana	121.4	108.8	115.0	105.3	105.3	105.3	106.9	106.9	106.8
Proizvodnja hemikalija i hem. proizvoda	121.4	108.8	115.0	105.3	105.3	105.3	106.9	106.9	106.8
Proizvodnja proizv. od gume i plastike	102.5	103.5	105.5	103.5	103.5	103.5	103.5	103.5	103.5
Proizvodnja proizv. od gume i plastike	102.5	103.5	105.5	103.5	103.5	103.5	103.5	103.5	103.5
Proizv. proizvoda od ost. nemetalnih min.	107.3	105.8	99.2	100.1	100.1	100.1	100.1	100.1	100.1
Proizv. proizvoda od ost. nemet. minerala	107.3	105.8	99.2	100.1	100.1	100.1	100.1	100.1	100.1
Proizv. osn. metala i metalnih proizvoda	108.2	111.5	75.4	107.4	106.0	87.8	84.7	81.0	76.2
Proizvodnja osnovnih metala	108.6	112.0	73.2	108.1	106.0	86.6	83.2	79.3	74.2
Proizvodnja metal. proizv., osim mašina	100.0	101.3	110.3	97.2	106.5	106.5	106.5	106.5	106.5
Proizvodnja mašina i uređaja, ostala	97.0	98.9	99.4	99.5	99.5	99.5	99.5	99.5	99.5
Proizvodnja mašina i uređaja, ostala	97.0	98.9	99.4	99.5	99.5	99.5	99.5	99.5	99.5
Prerađivačka industrija, ostala	103.0	113.7	113.1	102.6	102.6	102.6	103.5	115.8	115.8
Proizv. namještaja i raznovrsnih proizvoda	103.0	113.7	113.1	102.6	102.6	102.6	103.5	115.8	115.8
Proizvodnja el. energije, gasa i vode	113.3	121.4	110.3	102.4	102.4	110.2	110.2	110.2	110.2
Proizv. električne energije, gasa i vode	113.3	121.4	110.3	102.4	102.4	110.2	110.2	110.2	110.2
Proizv. el. energije, gasa i vode	113.3	121.4	110.3	102.4	102.4	110.2	110.2	110.2	100.2
Izabrane grupe proizvoda									
Elementi i materijal za ugrađivanje u građevinarstvo	105.4	107.0	107.7	101.5	103.7	103.7	103.3	104.6	104.3

INDEKSI CIJENA PROIZVOĐAČA INDUSTRIJSKIH PROIZVODA
PRODUCERS PRICE INDICES FOR INDUSTRIAL PRODUCTS

Ø 2008 = 100							
2009							
IV	V	VI	VII	VIII	IX	X	
96.8	96.3	95.3	93.9	94.5	95.1	95.6	Total
103.4	103.3	103.0	102.3	102.3	102.3	102.1	Mining and quarrying
91.3	90.6	89.1	88.4	89.2	90.1	90.9	Manufacturing
110.2	110.2	110.2	106.9	106.9	106.9	106.9	Electricity, gas and water supply
103.4	103.3	103.0	102.3	102.3	102.3	102.1	Mining and quarrying
101.5	101.5	101.5	100.0	100.0	100.0	99.6	Extraction of energy producing materials
101.5	101.5	101.5	100.0	100.0	100.0	99.6	Mining of coal and lignite, extraction of peat
104.8	104.7	104.1	104.1	104.1	104.1	104.1	Mining and quarr. exc. energy produc. materials
105.3	106.1	106.1	106.1	106.1	106.1	106.1	Mining of metal ores
102.4	98.9	95.4	95.4	95.4	95.4	95.4	Other mining and quarrying
91.3	90.6	89.1	88.4	89.2	90.1	90.9	Manufacturing
103.7	104.1	104.1	103.6	103.6	103.3	103.2	Manuf. of food produc., beverages and tobacco
102.2	102.6	102.6	102.0	102.0	101.7	101.6	Manufacture of food products and beverages
115.5	115.5	115.5	115.5	115.5	115.5	115.5	Manufacture of tobacco products
100.2	100.2	98.2	95.4	97.7	96.1	96.1	Manufacture of textile and textile products
99.5	99.5	99.5	99.5	100.4	100.4	100.4	Manufacture of textiles
101.4	101.4	95.8	87.8	92.8	88.1	88.1	Manufacture of wearing apparel and fur
104.7	104.7	104.7	104.7	104.7	104.7	104.7	Manufacture of leather and leather products
104.7	104.7	104.7	104.7	104.7	104.7	104.7	Manufac. of leather products and footwear
104.5	103.4	99.4	99.7	103.4	106.6	106.6	Manufacture of wood and wood products
104.5	103.4	99.4	99.7	103.4	106.6	106.6	Manufac. of wood product, cork and similar
99.6	99.6	99.6	99.6	99.6	99.6	99.8	Manufacture of paper, publishing and printing
100.9	100.9	100.9	100.9	100.9	100.9	101.7	Manufac. of pulp, paper and paper products
99.2	99.2	99.2	99.2	99.2	99.2	99.2	Publishing, printing and reproduction
117.0	117.0	117.0	116.2	116.2	116.8	116.8	Manufacture of chemical products and fibres
117.0	117.0	117.0	116.2	116.2	116.8	116.8	Manuf. of chemicals and chemical products
103.5	105.6	105.6	105.6	105.6	105.6	105.6	Manufacture of rubber and plastic products
103.5	405.6	105.6	105.6	105.6	105.6	105.6	Manufacture of rubber and plastic products
99.0	99.0	99.0	99.0	98.4	98.4	98.4	Manufacture of other non-metal minerals
99.0	99.0	99.0	99.0	98.4	98.4	98.4	Manuf. of other non-metal mineral products
76.2	74.5	72.3	71.4	72.5	74.2	75.8	Manufac. of basic metals and metal products
74.2	72.3	70.1	68.8	70.0	71.8	73.0	Manufacture of basic metals
106.5	106.5	106.5	110.9	110.9	110.5	117.3	Manuf. of metal products except machinery
99.5	99.5	99.5	99.5	99.5	99.5	99.5	Manufacture of other machinery and equipment
99.5	99.5	99.5	99.5	99.5	99.5	99.5	Manuf. of other machinery and equipment
115.8	115.8	112.4	111.5	111.5	111.5	111.5	Manufacturing n.e.c.
115.8	115.8	112.4	111.5	111.5	111.5	111.5	Manufac. of furniture and related products
110.2	110.2	110.2	106.9	106.9	106.9	106.9	Electricity, gas and water supply
110.2	110.2	110.2	106.9	106.9	106.9	106.9	Electricity, gas and water supply
110.2	110.2	110.2	106.9	106.9	106.9	106.9	Electricity, gas and water supply
104.2	104.4	107.2	108.1	109.9	110.7	112.3	Chosen groups of products Elements and material for building in the construction

INDEKSI POTROŠAČKIH CIJENA PO GRUPAMA PROIZVODA
RETAIL BY GROUPS OF PRODUCTS

	2008 2007	I-X 2009 I-X 2008	Ø 2008 = 100					
			2008			2009		
			X	XI	XII	I	II	III
Hleb i žitarice	111.5	103.1	102.1	102.4	102.4	102.5	102.7	102.7
Meso	104.6	107.3	103.3	104.5	104.5	104.8	106.4	106.5
Riba	108.5	104.3	101.3	101.5	110.2	100.7	100.8	99.5
Mlijeko, sir i jaja	108.2	110.0	103.5	106.1	107.9	108.6	108.2	107.8
Ulje i masti	134.3	84.6	97.7	96.4	95.0	93.6	92.4	91.2
Voće	109.0	95.5	90.6	86.4	85.7	86.7	90.6	99.3
Povrće	113.5	100.8	99.1	99.0	104.2	104.4	108.0	107.6
Šećer, med, pekmez i ost. slat.	100.5	102.9	100.8	101.0	101.3	101.5	101.1	100.8
Ostali prehrambeni proizvodi	101.5	99.6	100.8	99.8	99.3	99.4	99.1	99.6
Bezalkoholna pića	99.7	98.6	99.8	100.1	100.1	100.2	99.4	99.4
Alkoholna pića	106.4	105.6	103.4	103.6	103.6	104.3	105.9	104.3
Duvan	100.7	108.0	100.0	100.1	100.1	106.2	106.8	106.9
Materijal za odjeću	101.8	100.3	100.2	100.2	100.2	100.2	100.0	99.9
Odjeća	101.0	101.3	101.4	101.7	101.8	101.9	101.2	101.2
Ostalo za odjeću	101.5	101.1	101.4	101.4	101.4	101.4	101.7	101.7
Čišćenje i iznajmljivanje odjeće	100.3	115.3	100.2	100.2	100.2	100.2	103.5	116.7
Obuća	100.4	100.2	100.0	100.0	100.1	100.4	100.4	100.2
Popravka i iznajmljivanje obuće	100.9	102.9	101.4	101.4	101.4	101.4	101.4	102.8
Održavanje i popravke za stan	102.7	105.7	101.2	101.4	101.4	101.7	102.4	103.3
Snadbijevanje vodom	102.7	112.3	101.2	101.2	101.2	110.1	110.8	110.8
Elektr. energija, plin i ost. goriva	111.5	117.8	106.7	106.7	116.0	116.0	116.0	116.2
Namještaj i pokućstvo	100.4	91.0	100.1	100.1	100.1	100.1	97.7	92.8
Tekstilni proizvodi za kuću	101.1	101.3	100.4	110.5	100.6	100.8	100.9	100.8
Kućni aparati	101.0	99.9	101.3	101.6	101.6	102.2	101.6	101.1
Stakleno, stono posudje	101.1	99.2	99.5	99.6	99.8	99.7	99.3	99.3
Alati i oprema za kuću	96.1	99.4	100.2	100.2	100.2	99.9	99.5	99.7
Dobra i usluge za potrošnju	101.3	98.9	100.1	100.1	100.2	100.1	100.4	103.6
Zdravlje	106.0	103.1	101.6	101.6	101.9	102.7	102.7	102.7
Kupovina vozila	103.1	106.9	105.8	105.8	105.8	105.8	105.8	105.8
Oprema za održavanje vozila	109.9	86.2	104.0	92.7	86.2	78.3	82.6	81.5
Prevozne usluge	117.6	114.4	103.5	103.6	103.5	100.5	103.3	112.6
Komunikacije	117.6	103.4	99.9	99.8	99.8	99.8	99.8	101.7
Kultura i rekreacije	101.7	100.7	101.8	101.4	101.1	100.5	100.2	100.0
Obrazovanje	100.0	100.0	100.0	100.0	100.0	100.0	100.0	100.0
Restorani i hoteli	104.9	107.7	100.0	100.0	100.0	100.0	100.0	100.0
Ostala dobra i usluge	100.7	101.3	100.4	100.5	100.5	100.5	100.5	100.4

INDEKSI POTROŠAČKIH CIJENA PO GRUPAMA PROIZVODA
RETAIL BY GROUPS OF PRODUCTS

Ø 2008 = 100							
2009							
IV	V	VI	VII	VIII	IX	X	
102.7	102.8	103.1	103.1	103.0	102.9	102.7	<i>Breads and cereals</i>
106.1	106.2	106.8	107.2	106.9	107.2	107.3	<i>Meat</i>
98.5	99.7	100.9	101.5	105.1	110.5	113.1	<i>Fish</i>
107.9	108.2	108.2	108.3	108.9	109.3	109.4	<i>Milk, cheese, eggs</i>
85.8	83.5	83.6	83.0	82.7	82.5	75.3	<i>Oils and fats</i>
103.9	103.7	102.2	104.2	103.2	96.7	91.8	<i>Fruit</i>
115.7	116.9	96.3	84.8	88.5	90.2	92.5	<i>Vegetables</i>
101.6	101.8	101.8	102.8	105.2	104.9	105.6	<i>Sugar, honey, jam, etc.</i>
99.5	99.7	100.2	100.1	99.8	99.6	99.7	<i>Other alimentary products</i>
97.9	97.8	98.4	98.6	98.3	97.6	98.1	<i>Non-alcoholic beverages</i>
104.3	104.6	105.1	105.3	105.4	105.4	106.0	<i>Alcoholic beverages</i>
106.9	106.9	106.9	106.9	110.8	110.8	110.8	<i>Tobacco</i>
99.9	100.1	100.1	100.6	100.6	100.4	100.4	<i>Material for clothes</i>
100.9	100.8	100.6	100.6	100.5	100.4	101.1	<i>Clothes</i>
101.7	100.3	100.3	100.3	100.3	100.4	100.4	<i>Other for clothes</i>
118.8	118.8	118.8	118.8	118.8	118.8	118.8	<i>Cleaning and renting of clothes</i>
100.0	100.0	99.9	99.9	99.8	99.8	101.3	<i>Footwear</i>
102.8	102.9	102.9	102.9	102.9	102.9	102.9	<i>Repairing and renting of footwear</i>
105.1	105.8	105.8	106.0	107.1	108.3	108.3	<i>Maintaince and reparation of flats</i>
110.8	110.8	113.3	113.3	113.3	113.3	113.3	<i>Water</i>
116.2	116.2	116.2	113.8	113.8	113.6	113.3	<i>Electricity, petrol, and oth. fuels</i>
91.0	89.0	88.7	88.7	87.8	87.2	87.0	<i>Furniture and household furnish.</i>
100.5	100.7	101.6	101.6	101.5	101.5	101.5	<i>Textile products for house</i>
101.1	100.0	99.0	98.5	97.7	97.3	96.7	<i>Household aparatures</i>
99.3	99.3	99.2	99.2	99.2	98.9	99.0	<i>Glass, table ware</i>
99.4	99.0	99.3	99.3	99.3	99.1	99.1	<i>Tools and equipment for house</i>
102.7	99.6	99.8	99.4	97.4	93.1	93.1	<i>Goods and services for consumpt.</i>
102.8	102.7	102.7	102.7	102.8	102.8	102.8	<i>Health care</i>
105.7	105.6	105.6	105.6	105.6	105.6	105.6	<i>Buying of vehicles</i>
84.2	84.9	89.1	87.4	99.8	96.3	96.3	<i>Equip. for maintaining of vehicles</i>
114.3	114.3	115.7	118.6	118.6	119.1	119.1	<i>Transport services</i>
103.7	104.3	105.0	105.0	105.0	105.0	105.0	<i>Communications</i>
100.0	100.5	100.5	100.5	100.7	100.7	100.7	<i>Culture and recreations</i>
100.0	100.0	100.0	100.0	100.0	100.0	100.0	<i>Education</i>
109.1	109.1	109.1	109.1	109.1	115.9	115.9	<i>Restaurants and hotels</i>
101.4	101.4	101.5	101.4	101.4	101.6	101.6	<i>Other goods and services</i>

**INDEKSI POTROŠAČKIH CIJENA /
CONSUMER PRICES INDEX**

Ø 2008 = 100

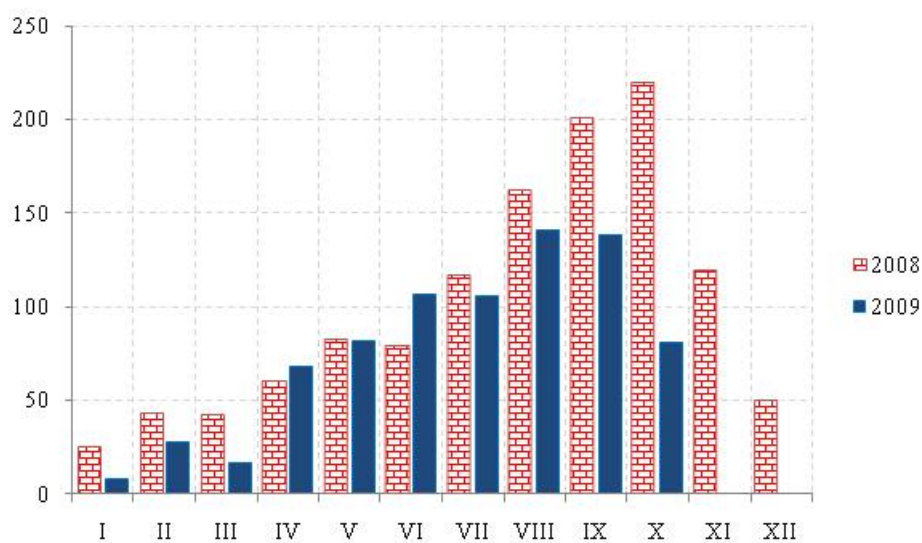
	Potrošačke cijene ukupno <i>Consumer prices- total</i>	Hrana i bezalkoholna pića <i>Food and non alcoholic beverage</i>	Alkoholna pića i duvan <i>Alcoholic beverages and tobacco</i>	Odjeća i obuća <i>Clothing and footwear</i>	Stanovanje <i>Renting</i>	Pokućstvo i oprema za kuću <i>Household furnishings</i>
2008	100.0	100.0	100.0	100.0	100.0	100.0
Ø I - X 2008	99.6	99.5	99.7	99.8	98.1	99.9
Ø I - X 2009	103.3	102.4	106.9	100.7	114.2	97.9
2008						
X	101.9	101.2	101.2	100.8	105.7	100.5
XI	101.3	101.7	101.2	101.0	105.7	100.5
XII	102.4	102.8	101.3	101.1	113.3	100.6
2009						
I	102.8	102.8	105.5	101.2	114.5	100.7
II	102.7	103.6	105.9	100.9	114.6	100.3
III	103.2	104.1	106.0	100.9	114.8	100.4
IV	103.8	104.8	106.0	100.7	114.9	99.7
IV	103.9	105.0	106.1	100.6	114.9	97.9
VI	103.5	103.2	106.3	100.4	115.2	97.8
VII	102.9	102.4	106.4	100.4	113.3	97.5
VIII	104.0	102.9	108.9	100.4	113.3	96.3
IX	103.7	102.9	108.9	100.3	113.3	94.5
X	103.7	102.7	109.1	101.3	113.0	94.3
I-X 2009/I-X 2008	103.7	103.9	107.2	100.9	116.4	98.1

/ nastavak /

/ continued /

	Zdravlje <i>Health care</i>	Prevoz <i>Transport</i>	Komunikacije <i>Communications</i>	Kultura i rekreacija <i>Culture and recreation</i>	Obrazovanje <i>Education</i>	Restorani i hoteli <i>Restaurants and hotels</i>	Ostala dobra i usluge <i>Other goods and services</i>
2008	100.0	100.0	100.0	100.0	100.0	100.0	100.0
Ø I - X 2008	99.6	101.3	100.0	99.7	100.0	100.0	99.9
Ø I - X 2009	102.7	94.4	103.4	100.4	100.0	107.7	101.2
2008							
X	101.6	104.1	99.9	101.8	100.0	100.0	100.4
XI	101.6	96.0	99.8	101.4	100.0	100.0	100.5
XII	101.9	91.4	99.8	101.1	100.0	100.0	100.5
2009							
I	102.7	85.2	99.9	100.5	100.0	100.0	100.5
II	102.7	88.7	99.8	100.2	100.0	100.0	100.5
III	102.7	89.6	101.7	100.0	100.0	100.0	100.4
IV	102.8	91.8	103.7	100.0	100.0	109.1	101.4
V	102.7	92.3	104.3	100.5	100.0	109.1	101.4
VI	102.7	95.5	105.0	100.5	100.0	109.1	101.5
VII	102.7	94.8	105.0	100.5	100.0	109.1	101.4
VIII	102.8	103.7	105.0	100.7	100.0	109.1	101.4
IX	102.8	101.3	105.0	100.7	100.0	115.9	101.6
X	102.8	101.3	105.0	100.7	100.0	115.9	101.6
I-X 2009/I-X 2008	103.1	93.2	103.4	100.7	100.0	107.7	101.3

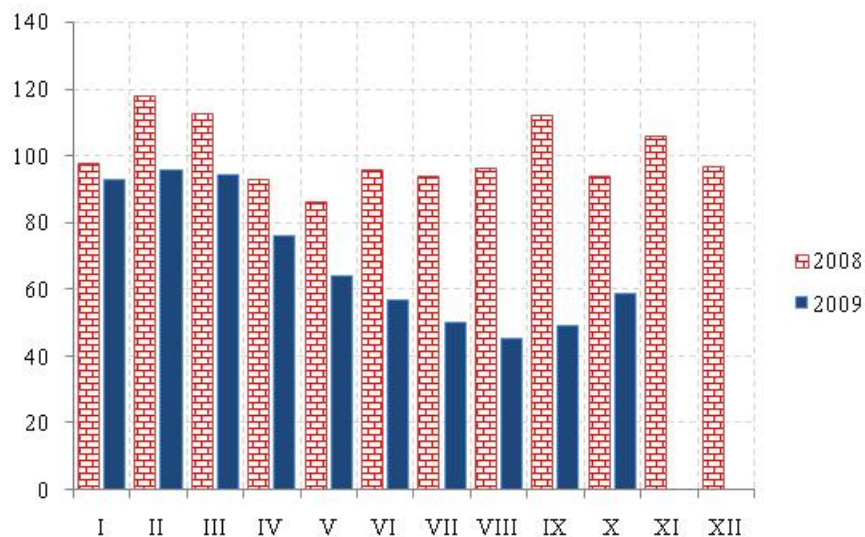
ŠUMARSTVO / FORESTRY



Ø 2008 = 100

	Indeks Index	Ukupno Total	Proizvedeni sortimenti, m³ / Production of forests assortments						
			Četinara / Conifers				Lišćara / Deciduous trees		
			trupci Saw logs	tehničko drvo Lumber	prostorno drvo Space wood	ogrijevno drvo Firewood	trupci Saw logs	prostorno drvo Space wood	ogrijevno drvo Firewood
2005	100.3	279228	166742	10156	11521	1949	47719	7460	33510
2006	115.3	325896	194057	11808	12798	1334	46736	15406	43754
2007	92.9	263787	151440	8878	12623	367	45000	14388	31091
2008	100.0	281260	160901	13090	17492	861	46467	9655	32794
Ø I - X 2008	103.1	24073	13734	1095	1401	67	4188	785	2803
Ø I - X 2009	77.9	18483	10963	542	921	90	2615	444	2908
2008									
X	219.4	50868	31036	2340	2281	175	7537	499	7000
XI	119.6	28090	16460	1500	1735	73	3711	952	3659
XII	49.9	12441	7106	638	1748	120	872	848	1109
2009									
I	8.1	1832	1304	90	364	-	-	4	70
II	27.5	5798	4867	361	541	-	-	4	25
III	16.6	3561	2891	141	392	-	92	2	43
IV	67.7	14772	11118	713	1456	1	648	363	473
V	87.1	19969	13244	841	1076	49	2042	808	1909
VI	106.4	25557	13888	799	1264	83	4528	979	4016
VII	105.3	25417	13671	666	1241	203	4612	368	4656
VIII	141.2	34251	18370	738	964	52	6531	338	7258
IX	138.5	33517	19225	816	1213	249	4762	660	6592
X	80.9	20156	11054	250	699	260	2935	919	4039
I-X 2009/I-X 2008	75.6	76.8	79.8	50	65.7	134.3	62.4	56.6	103.8

INDUSTRIJA / INDUSTRY
INDEKSI INDUSTRIJSKE PROIZVODNJE – po sektorima
INDICES OF INDUSTRIAL PRODUCTION – by sectors



Ø 2008= 100

	INDUSTRIJA Ukupno <i>INDUSTRY Total</i>	Vađenje ruda i kamena <i>Mining and quarrying</i>	Prerađivačka industrija <i>Manufacturing</i>	Proizvodnja električne energije, gasa i vode <i>Electricity, gas and water supply</i>
2004	102.9	81.2	100.6	117.0
2005	101.0	81.3	103.6	101.3
2006	101.9	83.7	103.2	104.4
2007	102.0	85.0	112.7	75.8
2008	100.0	100.0	100.0	100.0
Ø I - X 2008	99.8	104.9	101.4	93.3
Ø I - X 2009	68.3	37.9	63.4	92.8
2008				
X	93.9	124.0	102.3	59.2
XI	105.8	105.7	100.5	121.7
XII	96.4	45.4	85.6	144.8
2009				
I	92.9	40.6	62.1	201.4
II	95.7	56.8	62.0	208.3
III	94.5	67.6	78.9	149.7
IV	76.0	60.8	62.1	122.1
V	64.1	27.1	64.2	75.9
VI	57.0	5.3	68.0	41.2
VII	50.0	5.7	61.0	31.5
VIII	45.2	9.0	57.1	21.6
IX	49.0	55.6	62.7	6.2
X	58.5	50.1	55.6	69.8
I-X 2009/I-X 2008	68.4	36.1	62.5	99.5

INDEKSI INDUSTRIJSKE PROIZVODNJE – po podsektorima
INDICES OF INDUSTRIAL PRODUCTION – by sub-sectors

Ø 2008 = 100

	Vadenje energetske sirovine <i>Extraction of energy producing materials</i>	Vadenje ostalih sirovina i materijala <i>Mining and quarrying except energy producing materials</i>	Prehrambeni proizvodi, pića i duvan <i>Manufacture of food products, beverages and tobacco</i>	Proizvodnja tekstila i tekstilnih proizvoda <i>Manufacture of textile and textile products</i>
2004	89.5	76.7	100.4	146.6
2005	77.6	83.3	97.8	116.3
2006	91.2	79.5	88.6	135.6
2007	71.3	92.3	88.0	125.3
2008	100.0	100.0	100.0	100.0
Ø I - X 2008	99.5	107.8	97.8	117.0
Ø I - X 2009	62.0	25.0	89.3	14.7
2008				
X	110.0	131.6	108.6	18.6
XI	111.8	102.5	99.7	11.7
XII	93.6	19.6	122.4	17.9
2009				
I	107.3	4.9	74.5	20.5
II	124.8	20.4	83.8	16.1
III	136.9	30.5	102.3	19.2
IV	123.1	27.5	74.7	7.5
V	41.4	19.5	91.5	11.0
VI	4.0	6.0	93.5	15.4
VII	5.4	5.9	104.5	15.4
VIII	14.9	5.9	104.8	12.6
IX	20.2	74.6	92.9	13.6
X	41.6	54.6	70.9	15.4
I-X 2009/I-X 2008	62.3	23.2	91.3	12.6

/nastavak/

/continued/

	Proizvodnja kože i predmeta od kože <i>Manufacture of leather and leather products</i>	Prerada drveta i proizvodi od drveta <i>Manufacture of wood and wood products</i>	Proizvodnja papira, izdavanje i štampanje <i>Manufacture of paper, publishing and printing</i>	Proizvodnja hemijskih proizvoda i vlakana <i>Manufacture of chemical products and fibres</i>
2004	8.1	98.0	83.7	54.8
2005	20.3	131.2	105.9	161.7
2006	28.4	129.9	101.6	100.6
2007	46.3	131.6	107.4	153.4
2008	100.0	100.0	100.0	100.0
Ø I - X 2008	83.4	102.0	101.3	97.6
Ø I - X 2009	44.0	63.5	95.7	142.5
2008				
X	36.6	94.6	90.5	84.3
XI	219.8	101.5	86.7	143.6
XII	146.5	78.3	99.8	80.0
2009				
I	109.9	16.3	77.3	70.8
II	146.5	30.7	82.4	113.4
III	73.3	63.7	117.3	202.0
IV	36.6	57.3	85.6	157.9
V	-	62.9	96.9	111.5
VI	-	59.3	101.6	160.1
VII	36.6	81.7	113.4	120.6
VIII	-	94.3	104.7	122.5
IX	36.6	81.8	92.4	181.4
X	-	86.6	85.5	184.6
I-X 2009/I-X 2008	52.8	62.3	94.5	146.0

INDEKSI INDUSTRIJSKE PROIZVODNJE – po podsektorima
INDICES OF INDUSTRIAL PRODUCTION – by sub-sectors

Ø 2008 = 100

/continued/

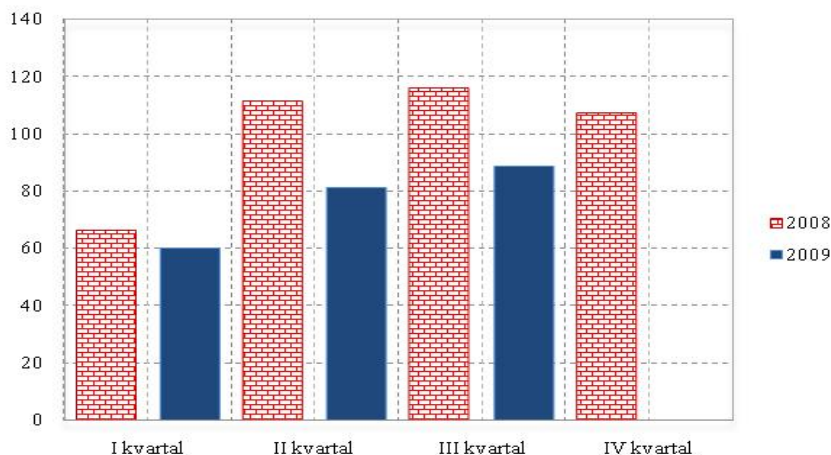
/nastavak /	Proizvodnja proizvoda od gume i plastičnih masa <i>Manufacture of rubber and plastic products</i>	Proizvodnja proizvoda od ostalih nemetalnih minerala <i>Manufacture of other non-metal minerals</i>	Proizvodnja osnovnih metala i metalnih proizvoda <i>Manufacture of basic metals and metal products</i>	Proizvodnja mašina i uređaja, ostala <i>Manufacture of other machinery and equipment</i>
2004	236.5	102.1	106.3	37.6
2005	222.8	101.7	99.2	48.5
2006	155.0	102.7	103.9	109.5
2007	157.5	102.2	114.8	105.9
2008	100.0	100.0	100.0	100.0
Ø I - X 2008	111.0	101.1	102.1	103.3
Ø I - X 2009	58.3	57.4	49.7	104.3
2008				
X	48.1	113.9	102.6	142.8
XI	66.1	107.7	95.6	161.4
XII	24.0	81.2	83.7	5.7
2009				
I	57.1	56.0	56.5	200.5
II	102.2	50.9	55.8	57.7
III	70.6	58.9	68.1	34.5
IV	45.1	62.0	49.3	104.4
V	82.6	59.5	54.1	75.2
VI	31.6	51.5	55.1	104.4
VII	51.1	55.5	44.6	77.1
VIII	34.6	59.0	35.8	133.7
IX	51.1	58.4	42.8	130.6
X	57.1	61.7	35.4	124.6
I-X 2009/I-X 2008	52.5	56.8	48.7	101.0

/nastavak /	Proizvodnja mašina, uređaja i aparata za domaćinstvo <i>Manufacture of machines, devices and apparatus for households</i>	Proizvodnja saobraćajnih sredstava <i>Manufacture of transport equipment</i>	Prerađivačka industrija, ostala <i>Manufacturing n.e.c.</i>	Proizvodnja električne energije, gasa i vode <i>Electricity, gas and water supply</i>
2004	-	130.6	18.1	146.6
2005	165.6	121.2	25.2	116.3
2006	189.4	119.5	97.3	135.6
2007	303.9	116.7	96.1	125.3
2008	100.0	100.0	100.0	100.0
Ø I - X 2008	-	103.3	112.0	93.3
Ø I - X 2009	-	91.8	49.8	92.8
2008				
X	-	92.6	55.2	59.2
XI	-	107.4	30.8	121.7
XII	-	59.3	49.3	144.8
2009				
I	-	88.9	42.9	201.4
II	-	77.8	31.1	208.3
III	-	66.7	35.0	149.7
IV	-	92.6	67.0	122.1
V	-	122.2	47.7	75.9
VI	-	122.2	48.9	41.2
VII	-	122.2	78.5	31.5
VIII	-	85.2	50.9	21.6
IX	-	63.0	50.6	6.2
X	-	77.8	45.3	69.8
I-X 2009/I-X 2008	-	88.9	44.5	99.5

GRAĐEVINARSTVO / CONSTRUCTION

Vrijednost izvršenih radova u hiljadama EUR / Value of finalized construction works

Ø 2008 = 100


VRIJEDNOST IZVRŠENIH I UGOVORENIH RADOVA, BROJ ZAPOSLENIH I IZVRŠENI EFEKTIVNI ČASOVI
VALUE OF FINALIZED AND ORDERED WORKS, NUMBER OF EMPLOYEES AND FINALIZED EFFECTIVE HOURS

	Indeks <i>Index</i>	Vrijednost izvršenih radova u hiljadama EUR <i>Value of finalized construction works</i>	Prosječan broj radnika na gradilištu <i>Average number of employees</i>	Indeks <i>Index</i>	Izvršeni efektivni časovi u 000 <i>Finalized effective hours in thousands</i>	
2004	18.7	54051	2011	45.2	4514	2004
2005	25.5	73252	2343	53.5	5345	2005
2006	70.9	204248	3525	84.3	8424	2006
2007	68.6	197639	3522	82.9	8280	2007
2008	100	287931	4200	100	9994	2008
2008 I kvartal	65.9	47445	4093	88.3	2205	2008 I quarter
II kvartal	111.2	80023	4567	103.0	2574	II quarter
III kvartal	115.8	83376	4118	107.1	2676	III quarter
IV kvartal	107.1	77087	4021	101.6	2539	IV quarter
2009 I kvartal	59.9*	43085*	3899*	77.9*	1946*	2009 I quarter
II kvartal	80.8*	58136*	3768*	86.2*	2153*	II quarter
III kvartal ¹⁾	88.5	63676	3622	82.7	2065	III quarter

/ nastavak/

/ continued /

	Indeks <i>Index</i>	Nove narudžbe na zgradama u hilj. EUR <i>New orders on buildings, thous. EUR</i>	Indeks <i>Index</i>	Nove narudžbe na ostalim građevinama u hilj. EUR <i>New orders on other buildings, thous. EUR</i>	
2006	116.6	99327	48.8	60720	2006
2007	164.5	140006	59.1	73539	2007
2008	100	85145	100	124524	2008
2008 I kvartal	128.5	27354	92.3	28722	2008 I quarter
II kvartal	133.4	28385	121.0	37686	II quarter
III kvartal	59.8	12730	68.3	21248	III quarter
IV kvartal	78.3	16676	118.4	36868	IV quarter
2009 I kvartal	60.6	12890	38.5	11979	2009 I quarter
II kvartal	9.7	2065	90.8*	28260*	II quarter
III kvartal ¹⁾	103.2	21960	95.3	29677	III quarter ¹⁾

¹⁾ Prethodni podatak¹⁾ Preliminary data

SPOLJNA TRGOVINA / EXTERNAL TRADE ¹⁾
Izvoz i uvoz po zemljama, u hilj. EUR / Exports and imports by countries, thous EUR

	Izvoz / Export			Uvoz / Import			
	I - X	I - X	Indeks / Index	I - X	I - X	Indeks / Index	
	2008	2009	<u>I - X 2009</u> I - X 2008	2008	2009	<u>I - X 2009</u> I - X 2008	
UKUPNO	375046.4	236190.6	63.0	2181139.4	1357611.7	62.2	TOTAL
Evropa	371490.5	233308.9	62.8	2106717.5	1316024.1	62.5	Europe
Albanija	5358.7	5200.2	97.0	17627.1	14990.9	85.0	Albania
Austrija	1225.3	1445.2	117.9	81767.9	55264.1	67.6	Austria
Belgija-Luxemburg	137.6	59.8	43.5	7833.5	4091.6	52.2	Belgium – Luxembourg
BiH (sa Rep. Srpskom)	17708.6	14609.8	82.5	147239.5	83858.1	57.0	B&H (with RS)
Bugarska	105.5	110.5	104.7	9753.2	6881.3	70.6	Bulgaria
Velika Britanija	3275.9	1568.9	47.9	4933.6	3090.8	62.6	Great Britain
Grčka	53220.7	44313.1	83.3	163106.9	85632.6	52.5	Greece
Danska	11.1	6.7	60.3	1846.7	1455.6	78.8	Denmark
Italija	110691.5	31472.7	28.4	170916.2	89965.0	52.6	Italy
Mađarska	6422.5	11557.8	180.0	46826.3	25680.5	54.8	Hungary
Njemačka	13779.0	6118.9	44.4	115077.5	53050.6	46.1	Germany
Slovenija	34924.0	15398.8	44.1	141725.8	96663.8	68.2	Slovenia
Poljska	97.1	309.2	318.5	10255.8	7979.3	77.8	Poland
Makedonija	737.7	1293.6	175.4	26082.4	17804.9	68.3	Macedonia
Rumunija	995.0	497.8	50.0	17814.3	10991.6	61.7	Romania
Ruska federacija	915.6	1110.4	121.3	2849.9	6379.9	223.9	Russian Federation
Srbija ²⁾	89507.3	64289.9	71.8	727764.0	501099.1	68.9	Serbia
Hrvatska	5983.5	9373.7	156.7	146050.7	107828.6	73.8	Croatia
Francuska	255.5	696.9	272.7	23307.9	7696.3	33.0	France
Holandija	3543.0	3968.4	112.0	23862.2	23002.1	96.4	Netherlands
Česka Republika	4252.9	1035.2	24.3	26903.6	11901.0	44.2	Czech Republic
Švajcarska	1668.6	158.4	9.5	110709.5	49859.0	45.0	Switzerland
Švedska	657.3	503.8	76.7	19992.8	1779.3	8.9	Sweden
Španija	49.2	106.1	215.8	17159.9	16384.2	95.5	Spain
Turska	257.0	1150.0	447.5	24654.4	14644.1	59.4	Turkey
Ostale zemlje	15710.7	16953.2	107.9	20655.8	18050.1	87.4	Other countries
Azija	1799.8	1521.7	84.5	43538.8	26888.4	61.8	Asia
Irak	874.0	0.0	0.0	0.0	0.0	0.0	Iraq
Izrael	15.3	619.0	4040.7	1058.5	1039.4	98.2	Israel
Indija	0.0	0.0	0.0	725.7	529.1	72.9	India
Indonezija	0.0	0.0	0.0	481.6	202.4	42.0	Indonesia
Japan	79.9	11.9	14.9	1543.7	867.6	56.2	Japan
Kina	126.7	22.5	17.8	32171.7	19716.9	61.3	China
Koreja	0.8	0.5	57.8	954.1	271.3	28.4	Korea
Tajland	0.0	0.0	0.0	626.0	856.6	136.8	Thailand
Hong Kong	18.3	0.0	0.0	1895.5	835.5	44.1	Hong Kong
Ostale zemlje	684.8	867.7	126.7	4082.1	2569.7	63.0	Other countries
Afrika	929.3	910.1	97.9	932.9	762.0	81.7	Africa
Egipat	655.6	616.8	94.1	676.3	348.6	51.5	Egypt
Etiopija	0.0	0.0	0.0	0.0	0.0	0.0	Ethiopia
Libijska Araps.Džamah.	80.3	0.0	0.0	0.0	0.0	0.0	Libyan Arab.Jamahiriya
Maroko	0.0	0.0	0.0	5.6	203.6	3654.6	Morocco
Tunis	0.0	0.0	0.0	12.9	17.0	131.8	Tunis
Ostale zemlje	193.4	293.3	151.7	238.1	192.8	81.0	Other countries
Amerika	821.3	449.9	54.8	29851.8	13900.2	46.6	America
Kanada	87.8	83.4	95.0	2000.7	589.8	29.5	Canada
Panama	0.0	0.0	0.0	278.1	658.0	236.6	Panama
SAD	623.9	298.5	47.8	17388.5	4237.7	24.4	USA
Argentina	0.0	0.0	0.0	506.3	343.8	67.9	Argentina
Brazil	94.5	0.0	0.0	7182.3	6033.6	84.0	Brazil
Ekvador	0.0	0.0	0.0	1445.4	1666.3	115.3	Ecuador
Kolumbija	0.0	0.0	0.0	0.0	23.7	0.0	Columbia
Peru	0.0	0.0	0.0	0.0	0.0	0.0	Peru
Devičanska ostrva	12.3	61.2	498.3	367.9	40.0	10.9	The Virgin Islands
Ostale zemlje	2.8	6.8	240.4	682.5	307.3	45.0	Other countries
Australija i Okeanija	5.5	0.0	0.0	98.4	37.0	37.6	Australia and Oceania
Australija	5.5	0.0	0.0	35.5	37.0	104.2	Australia
Novi Zeland	0.0	0.0	0.0	7.0	0.0	0.0	New Zealand
Ostale zemlje	0.0	0.0	0.0	55.9	0.0	0.0	Other countries

¹⁾ Predhodni podaci²⁾ Za 2008 bez podataka za Kosovo i Metohiju¹⁾ Previous data²⁾ Without data for Kosovo and Metohia in 2008

SPOLJNA TRGOVINA / EXTERNAL TRADE
Izvoz i uvoz robe, hilj. EUR / Exports and imports of goods, thous EUR

	Izvoz / Export			Uvoz / Import			
	I - X 2008	I - X 2009	Indeks / Index I - X 2009 I - X 2008	I - X 2008	I - X 2009	Indeks / Index I - X 2009 I - X 2008	
Ukupno	375046.4	236190.6	63.0	2181139.4	1357611.7	62.2	Total
Zive životinje	0.1	12.5	12518.8	13296.6	13294.2	100.0	Live animals
Meso i drugi klanični proizvodi za jelo	2293.1	2095.3	91.4	48433.0	49335.5	101.9	Meat and edible meat offal
Ribe, ljuskari, mekušci i ostali vođeni beskičmenjaci	173.4	186.2	107.4	5073.6	4554.4	89.8	Fish and crustaceans, molluscs and other aquatic invertebrates
Mlijeko i proizvodi od mlijeka, živalska i ptičja jaja, prirodni med, jestivi proizvodi životinskog porijekla, nepomenuti niti obuhvaćeni na drugom mjestu	51.6	27.0	52.4	33290.9	29980.5	90.1	Dairy produce; birds' eggs; natural honey; edible products of animal origin, not elsewhere specified or included
Proizvodi životinskog porijekla, na drugom mjestu nepomenuti niti obuhv.	2.1	2.5	115.5	326.5	247.7	75.9	Products of animal origin, not elsewhere specified or included
Živo drveće i druge biljke; lukovice, korijenje i slično; siječeno cvijeće i ukrasno lišće	0.0	9.1	0.0	2958.5	2798.0	94.6	Live trees and other plants; bulbs, roots and the like; cut flowers and ornamental foliage
Povrće, korijenje i krtole za jelo	3212.1	2613.3	81.4	6253.2	5858.2	93.7	Edible veg. and certain roots and tub.
Voće za jelo, uključujući jezgrasto voće; kore agruma ili dinja i lubenica	3055.2	2037.6	66.7	10446.1	10097.2	96.7	Edible fruit and nuts; peel of citrus fruits or melons
Kafa, čaj, mate čaj i začini	127.0	86.2	67.9	11415.4	13855.2	121.4	Coffee, tea, maté and spices
Žitarice	131.3	197.3	150.3	6913.4	8770.4	126.9	Cereals
Proizvodi mlinarske industrije; slad; skrob; inulin; gluten od pšenice	356.5	1189.0	333.5	20652.7	13420.7	65.0	Products of the milling industry; malt; starches; inulin; wheat gluten
Uljučujući i plodovi; razno zrncvlje, sjeme i plodovi; industrijsko i ljekovito bilje; slama i stočna hrana (kabasta)	116.4	161.2	138.5	1623.7	1338.4	82.4	Oil seeds and oleaginous fruits; miscel-laneous grains, seeds and fruit; indust-rial or medicinal plants; straw and fodd
Seljak; gume, smole i ostali biljni sokovi i ekstrakti	0.0	0.0	0.0	120.5	58.4	48.5	Lac; gums, resins and other vegetable saps and extracts
Biljni materijali za pletarstvo; biljni proiz na drugom mjestu nepomenuti niti obuh.	0.0	0.0	0.0	58.9	24.5	41.5	Vegetable plaiting materials; vegetable produc. not elsewhere specified or incl.
Masnoće i ulja životinskog ili biljnog porijekla i proizvodi njihovog razlaganja; prerađene jestive masnoće; voskovi životinskog i biljnog porijekla	67.1	209.4	312.0	14429.0	12507.8	86.7	Animal or vegetable fats and oils and their cleavage products; prepared edible fats; animal or vegetable waxes
Prerađevine od mesa, riba, ljuskara, mekušaca ili ostalih vođenih beskičmenjaka	1770.0	2747.0	155.2	21615.1	18107.9	83.8	Preparations of meat, of fish or of crustaceans, molluscs or other aquatic invertebrates
Šećer i proizvodi od šećera	228.9	210.2	91.8	8855.8	7043.5	79.5	Sugars and sugar confectionery
Kakao i proizvodi od kakaa	136.1	11.1	8.2	14569.6	14856.2	102.0	Cocoa and cocoa preparations
Proizvodi na bazi žitarica, brašna, skroba ili mlijeka; poslastičarski proizvodi	977.0	674.0	69.0	22953.7	21501.4	93.7	Preparations of cereals, flour, starch or milk; pastrycooks' products
Proizvodi od povrća, voća, uključujući jezgrasto voće, i ostalih dijelova bilja	179.7	632.3	351.8	19212.9	16312.7	84.9	Preparations of vegetables, fruit, nuts or other parts of plants
Razni proizvodi za ishranu	720.6	981.4	136.2	20735.7	20743.3	100.0	Miscellaneous edible preparations
Pića, alkoholi i sirće	19123.6	15991.0	83.6	49793.0	40446.3	81.2	Beverages, spirits and vinegar
Ostaci i otpaci prehrambene industrije; pripremljena hrana za životinje	21.6	392.5	1815.9	11744.4	9841.1	83.8	Residues and waste from the food industries; prepared animal fodder
Duvan i proizvodi zamjene duvana	4065.0	1737.4	42.7	17101.9	18440.7	107.8	Tobacco and manuf. tobacco substitut.
So; sumpor; zemlja i kamen; gips, kreč i cement	1816.5	1602.5	88.2	50572.4	31182.9	61.7	Salt; sulphur; earths and stone; plastering materials, lime and cement
Rude, zgure i pepeo	2632.9	0.0	0.0	237.6	168.4	70.9	Ores, slag and ash
Mineralna goriva, mineralna ulja i proizvodi njihove destilacije; bitumenozne materije; mineralni voskovi	10722.9	6741.7	62.9	323630.2	168805.5	52.2	Mineral fuels, mineral oils and products of their distillation; bituminous substances; mineral waxes
Neorganski hemijski proizvodi; organska ili neorganska jedinjenja plemenitih metala, metala rijetkih zemlji, radioaktivnih elemenata i izotopa	30.2	15.7	52.0	12430.8	9048.4	72.8	Inorganic chemicals; organic or norga-nic compounds of precious metals, of rare-earth metals, of radioactive lemen-ts or of isotopes
Organski hemijski proizvodi	25.6	165.0	644.9	2290.5	5636.9	246.1	Organic chemicals
Farmaceutski proizvodi	6819.9	7706.5	113.0	36465.9	39618.5	108.6	Pharmaceutical products
Đubriva	0.0	0.1	0.0	2562.4	1789.2	69.8	Fertilisers
Ekstrati za štavljenje ili bojenje; tanini i njihovi derivati; boje, pigmenti i ostale meterije za bojenje; boje i lakovi; kitovi i ostale zaptivne mase; mastila	39.1	114.2	291.7	23865.5	18244.1	76.4	Tanning or dyeing extracts; tannins and their derivatives; dyes, pigments and other colouring matter; paints and varnishes; putty and other mastics; inks
Eterična ulja i rezinoidi; parfimerijski, kozmetički i toaletni proizvodi	3827.0	3838.5	100.3	20043.2	17690.6	88.3	Essential oils and resinoids; perfu-mery, cosmetic or toilet preparations

SPOLJNA TRGOVINA / EXTERNAL TRADE
Izvoz i uvoz robe, hilj. EUR / Exports and imports of goods, thous EUR

/ nastavak /	Izvoz / Export			Uvoz / Import			/continued /
	I - X	I - X	Indeks / Index	I - X	I - X	Indeks / Index	
	2008	2009	$\frac{I - X 2009}{I - X 2008}$	2008	2009	$\frac{I - X 2009}{I - X 2008}$	
Sapun, organska površinska aktivna sredstva, preparati za pranje, preparati za podmazivanje, vještački voskovi, pripremljeni voskovi, preparati za poliranje i čišćenje, svijeće i slični proizvodi, paste za modelovanje "zubarski voskovi" i zubarski preparati n	244.6	102.3	41.8	15804.0	15005.3	94.9	Soap, organic surface-active agents, washing preparations, lubricating preparations, artificial waxes, prepared waxes, polishing or scouring preparations, candles and similar articles, modelling pastes, 'dental waxes' and dental preparations
Bjelančevinaste materije; modifikovani skrobovi; lijepkovi; enzimi	16.9	2.7	16.3	3415.8	2998.7	87.8	Albuminoidal substances; modified starches; glues; enzymes
Eksplzivni; pirotehnički proizvodi; šibice; piroforme legure; zapaljivi preparati	574.3	678.7	118.2	717.6	373.1	52.0	Explosives; pyrotechnic products; matches; pyrophoric alloys; certain combustible preparations
Proizvodi za fotografske ili kinematografske svrhe	19.3	8.8	46.0	1537.3	1026.4	66.8	Photographic or cinematographic goods
Razni proizvodi hemijske industrije	26.3	62.7	238.0	15478.8	12158.3	78.5	Miscellaneous chemical products
Plastične mase i proiz. od plastičnih masa	504.2	450.2	89.3	60292.8	42168.0	69.9	Plastics and articles thereof
Kaučuk i proizvodi od kaučuka i gume	69.0	136.0	197.1	15329.7	9604.1	62.7	Rubber and articles thereof
Sirova sitna i krupna koža, sa dlakom ili bez dlake (osim krzna) i štavljena koža	2093.7	1529.5	73.0	123.1	134.3	109.2	Raw hides and skins (other than furskins) and leather
Proizvodi od kože, sedlarski i sarački proizvodi, predmeti za putovanje, ručne torbe i slični kontejneri i proizvodi od životinjskih crijeva (osim svilenog ketguta)	54.6	75.1	137.6	8141.6	5598.0	68.8	Articles of leather; saddlery and harness; travel goods, handbags and similar containers; articles of animal gut (other than silkworm gut)
Prirodno i vještačko krzno; proizvodi od krzna	0.0	68.2	0.0	212.9	136.5	64.1	Furskins and artificial fur; manufactures thereof
Drvo i proizvodi od drveta; drveni ugali	13098.3	11361.0	86.7	34057.1	18664.2	54.8	Wood and artic. of wood; wood charcoal
Pluta i proizvodi od plute	0.0	0.0	0.0	918.1	619.2	67.4	Cork and articles of cork
Proizvodi od slame, esparta ili ostalih materijala za pletariju; korparskih i pletarskih proizvoda	0.0	0.3	5015.3	266.2	120.3	45.2	Manufactures of straw, of esparto or of other plaiting materials; basketware and wickerwork
Celuloza od drveta ili drugih vlaknastih celuloznih materijala; hartija i karton (otpaci i ostaci) za ponovnu preradu	354.4	384.9	108.6	4.4	7.1	159.4	Pulp of wood or of other fibrous cellulosic material; recovered (waste and scrap) paper or paperboard
Hartija i karton; proizvodi od hartijine pulpe, hartije ili kartona	1363.4	1626.6	119.3	25331.0	22837.2	90.2	Paper and paperboard; articles of paper pulp, of paper or of paperboard
Štampane knjige, novine, slike i ostali proizvodi grafičke industrije, rukopisi, kucani tekstovi i planovi	971.2	1654.5	170.4	18535.8	15096.3	81.4	Printed books, newspapers, pictures and other products of the printing ind.; manuscripts, typescripts and plans
Svila	5.4	0.0	0.0	45.0	23.4	51.9	Silk
Vuna, fina ili gruba životinjska dlaka, predivo i tkanine od konjske dlake	40.7	36.1	88.6	37.9	27.0	71.2	Wool, fine or coarse animal hair; horsehair yarn and woven fabric
Pamuk	89.2	14.2	16.0	849.7	363.2	42.7	Cotton
Ostala biljna tekstilna vlakna; predivo od hartije i tkanine od prediva od hartije	0.0	0.1	0.0	25.9	14.0	54.1	Other vegetable textile fibres; paper yarn and woven fabrics of paper yarn
Vještački ili sintetički filamenti	4.3	0.1	2.6	385.0	356.4	92.6	Man-made filaments
Vještačka ili sintetička vlakna, sječena	12.5	2.7	21.4	767.5	421.4	54.9	Man-made staple fibres
Vata, filc i netkani materijal; specijalna prediva; kanapi, užad, konopci i kablovi i proizvodi od njih	48.5	7.2	14.8	1522.2	1523.9	100.1	Wadding, felt and nonwovens; special yarns; twine, cordage, ropes and cables and articles thereof
Tepisi i ostali tekstilni podni pokrivači	13.3	10.6	79.6	3952.3	2146.1	54.3	Carpets and other textile floor cover.
Specijalne tkanine; taftovani tekstilni proizv.; čipke; tapiserije; pozamanterija, vez	3.9	2.1	53.8	279.6	91.8	32.8	Special woven fabrics; tufted textile fabrics; lace; tapestries; trimmings; embroid.
Tekst. tkanine, impregnisane, premazane, prevučene, prekrivene ili laminirane, tekstilni proizvodi pogodni za tehn. svrhe	4.4	3.6	81.9	708.7	427.7	60.3	Impregnated, coated, covered or laminated textile fabrics; textile articles of a kind suitable for industrial use
Pleteni ili kukičani materijali	3.4	0.2	5.1	197.7	147.6	74.7	Knitted or crocheted fabrics
Odjeća i pribor za odjeću, pleteni ili kukičani	190.4	327.8	172.2	13735.2	10468.9	76.2	Articles of apparel and clothing accessories, knitted or crocheted
Odjeća i pribor za odjeću, osim pletenih ili kukičanih proizvoda	521.3	642.3	123.2	33364.7	23464.7	70.3	Articles of apparel and clothing accessories, not knitted or crocheted
Ostali gotovi proizvodi od tekstila; setovi, iznošena, dotrajala odjeća i dotrajali proizvodi od tekstila; krpe	84.7	28.8	34.0	6198.3	3965.2	64.0	Other made-up textile articles; sets; worn clothing and worn textile articles; rags
Obuća, kamašne i slični proizvodi; dijelovi tih proizvoda	511.3	427.5	83.6	31354.0	23685.5	75.5	Footwear, gaiters and the like; parts of such articles

SPOLJNA TRGOVINA / EXTERNAL TRADE
Izvoz i uvoz robe, hilj. EUR / Exports and imports of goods, thous EUR

/ nastavak /	Izvoz / Export			Uvoz / Import			/ continued /
	I - X 2008	I - X 2009	Indeks / Index I - X 2009 I - X 2008	I - X 2008	I - X 2009	Indeks / Index I - X 2009 I - X 2008	
Šeširi, kape i ost. pokrivke za glavu i djel.	30.6	17.0	55.7	874.3	428.5	49.0	Headgear and parts thereof
Kišobrani, suncobrani, štapovi, štapovi- stolice, bičevi, korbači i njihovi dijelovi	2.5	14.4	587.3	1365.5	679.3	49.7	Umbrellas, sun umbrellas, walking- sticks, seat-sticks, whips, riding-crops and parts thereof
Perje i paperje, preparirano i proizvodi izradjeni od perja i paperja; vještačko cvijeće; proizvodi od ljudske kose	0.2	3.6	1661.2	165.7	136.4	82.4	Prepared feathers and down and arti- cles made of feathers or of down; arti- ficial flowers; articles of human hair
Proizvodi od kamena, gipsa, cementa, betona, azbesta, liskuna ili sličnih mater.	547.0	318.6	58.3	18352.8	10961.7	59.7	Articles of stone, plaster, cement, asbestos, mica or similar materials
Keramički proizvodi	148.8	245.3	164.9	50228.3	23968.5	47.7	Ceramic products
Staklo i proizvodi od stakla	83.9	30.1	35.9	15972.6	11381.3	71.3	Glass and glassware
Prirodni ili kultivisani biseri, drago ili polu- drago kamenje, plemeniti metali, metali platinirani plemenitim metalima, i proizvodi od njih; imitacije nakita; metalni novac	73.6	356.7	484.3	1537.1	1139.8	74.2	Natural or cultured pearls, precious or semi-precious stones, precious metals, metals clad with precious metal, and artic. thereof; imitation jewellery; coin
Gvožđe i čelik	74436.7	29192.0	39.2	93154.9	30836.3	33.1	Iron and steel
Proizvodi od gvožđa i čelika	16885.2	6957.5	41.2	91785.4	51384.6	56.0	Articles of iron or steel
Bakar i proizvodi od bakra	5184.7	2206.2	42.6	3277.1	1460.3	44.6	Copper and articles thereof
Nikl i proizvodi od nikla	1.9	0.0	0.0	1536.8	28.8	1.9	Nickel and articles thereof
Aluminijum i proizvodi od aluminijuma	162123.5	98614.5	60.8	29503.6	18984.4	64.3	Aluminium and articles thereof
Olovo i proizvodi od olova	133.8	141.5	105.7	54.6	59.3	108.6	Lead and articles thereof
Cink i proizvodi od cinka	6.2	258.6	4200.7	381.7	273.6	71.7	Zinc and articles thereof
Kalaj i proizvodi od kalaja	0.9	0.0	0.0	16.3	8.6	52.5	Tin and articles thereof
Ostali prosti metali; kremeti; proiz. od njih	0.0	0.2	0.0	111.4	24.0	21.5	Other base metals; cermets; art. thereof
Alati, nožarski proizvodi, kašike i viljuške, od prostih metala; njihovi dijelovi od prostih metala	130.5	214.8	164.7	7317.8	4361.0	59.6	Tools, implements, cutlery, spoons and forks, of base metal; parts thereof of base metal
Razni proizvodi od prostih metala	1556.2	762.8	49.0	10407.8	5703.3	54.8	Miscellaneous articles of base metal
Reaktori, kotlovi, mašine i mehanički uredjaji i njihovi dijelovi	11698.9	14090.9	120.4	229254.0	93414.3	40.7	Reactors, boilers, machinery and mechanical appliances; parts ther.
Električne mašine i oprema i njihovi dije- lovi; aparati za snimanje i reprodukciju zvuka; televizijski aparati za snimanje i reprodukciju slike i zvuk, dijelovi i pribor za te proizvode	4605.6	2844.5	61.8	150884.3	84900.9	56.3	Electrical machinery and equipment and parts thereof; sound recorders and reproducers, television image and sound recorders and reproducers, and parts and accessories of such articles
Šinska vozila i njihovi dijelovi; željeznički i tramvajski kolosječni sklopovi i pribor i njihovi dijelovi, mehanička i elektromehanička signalna oprema za saobraćaj svih vrsta	570.8	153.9	27.0	2826.6	717.6	25.4	Railway or tramway locomotives, rolling- stock and parts thereof; railway or tramway track fixtures and fittings and parts thereof; mechanical (including electro-mechanical) traffic signalling equipment of all kinds
Vozila, osim željezničkih ili tramvajskih šinskih vozila i njihovih dijelovi i pribor	3271.1	2698.3	82.5	220109.2	70069.1	31.8	Vehicles other than railway or tramway rolling-stock, and parts and acc. Ther.
Vazduhopl., kosmičke letjelice i njihovi dj.	782.3	892.9	114.1	873.6	18083.4	2070.0	Aircraft, spacecraft, and parts thereof
Brodovi, čamci i ploveće konstrukcije	4451.8	1340.1	30.1	6063.2	7065.5	116.5	Ships, boats and floating structures
Optički, fotografski, kinematografski, mjerni, kontrolni, precizni, medicinski i hirurški instrumenti i aparati; njihovi dijelovi i pribor	602.6	261.2	43.3	19190.2	24073.0	125.4	Optical, photographic, cinematograph- ic, measuring, checking, precision, medical or surgical instruments and apparatus; parts and accessories ther.
Časovnici i njihovi dijelovi	41.5	9.6	23.2	2852.2	1428.2	50.1	Clocks and watches and parts thereof
Muzički instrumenti, dijelovi i pribor ovih proizvoda	5.8	2.8	48.3	329.2	467.3	142.0	Musical instruments; parts and accessories of such articles
Namještaj, posteljina, madraci, nosači madraca, jastuci i slični punjeni proizvodi; lampe i druga svjetleća tijela, na drugom mjestu nepomenuti ili uključeni; osvjetljeni znaci, osvjetljene pločica imenima i slično, montažne zgrade	1258.5	830.4	66.0	78506.1	44559.2	56.8	Furniture; bedding, mattresses, mattress supports, cushions and similar stuffed furnishings; lamps and lighting fittings, not elsewhere specified or included; illuminated signs, illuminated name-plates and the like; prefabricated build.
Igračke, rekviziti za društvene igre i sport; njihovi dijelovi i pribor	355.6	488.5	137.4	11723.6	6342.4	54.1	Toys, games and sports requisites; parts and accessories thereof
Razni proizvodi	13.8	24.5	177.2	3377.3	2879.4	85.3	Miscellaneous manufactured articles
Predmeti umjetnosti, kolekcija i starina	182.2	261.3	143.4	155.4	439.9	283.1	Works of art, collectors' pieces and ant.
Nerazvrstani	2213.9	925.6	41.8	1388.3	2059.3	148.3	Other

UNUTRAŠNJA TRGOVINA / DOMESTIC TRADE

PROMET U TRGOVINI NA MALO / TURNOVER IN RETAIL TRADE

Ø 2008 = 100

	Indeks ¹⁾ / Index	PROMET u hilj.EUR / Turnover in thous. EUR
2006	62.1	581942
2007	86.2	808258
2008	100	937340
Ø I - X 2008	100.6	78565
Ø I - X 2009	91.1	71146
2008		
X	102.0	79666
XI	84.2	65775
XII	108.6	84810
2009 ²⁾		
I	74.1	57894
II	76.5	59756
III	75.2	58774
IV	87.5	68329
V	86.2	67321
VI	93.6	73123
VII	113.9	89003
VIII	119.5	93379
IX	93.1	72735
X	91.2	71213
I-X 2009/I-X 2008	90.4	90.4

¹⁾ Indeks prometa po tekućim cijenama.²⁾ Prethodni podaci¹⁾ Index of turnover at current prices.²⁾ Preliminary data

	PROMET U TRGOVINI NA MALO / TURNOVER IN RETAIL TRADE						
	PROMET u hilj. EUR <i>Turnover in thous. EUR 2009</i>	tekući mjesec na prethodni <i>Current month compared to the previous month</i>		mjesec 2009. na isti mjesec 2008. <i>Month in 2009 compared to the same month 2008</i>		mjesec 2009. na Ø 2008 <i>Month in 2009 to Ø 2008</i>	
		indeks prometa u tekućim cijenama <i>Index of turnover at current prices</i>	indeks prometa u stalnim cijenama <i>Index of turnover at constant prices</i>	indeks prometa u tekućim cijenama <i>Index of turnover at current prices</i>	indeks prometa u stalnim cijenama <i>Index of turnover at constant prices</i>	indeks prometa u tekućim cijenama <i>Index of turnover at current prices</i>	indeks prometa u stalnim cijenama <i>Index of turnover at constant prices</i>
2009 ¹⁾							
I	57894	68.3	68.5	122.9	124.0	74.1	73.4
II	59756	103.2	103.4	99.7	97.4	76.5	75.9
III	58774	98.4	98.5	85.9	84	75.2	74.6
IV	68329	116.3	116.8	96.4	95.2	87.5	86.9
V	67321	98.5	98.6	87.2	86.4	86.2	85.7
VI	73123	108.6	108.7	80.2	79.7	93.6	93.02
VII	89003	121.7	121.9	91.5	91.1	113.9	113.2
VIII	93379	104.9	104.7	95.2	94.8	119.5	118.5
IX	72735	77.9	78	74.9	75.1	93.1	92.4
X	71213	97.9	98.1	89.4	89.7	90.5	91.2

¹⁾ Prethodni podaci¹⁾ Preliminary data

PRODAJA I OTKUP PROIZVODA POLJOPRIVREDE, ŠUMARSTVA I RIBARSTVA
SALE AND BUYING OUT OF PRODUCTS FROM AGRICULTURE, FORESTRY AND FISHERY

U hiljadama EUR			In thousands EUR				
	Indeks <i>Index</i> Ø 2008 =100	Ukupna vrijednost <i>Total value</i>	Poljoprivreda i šumarstvo / <i>Agriculture and forestry</i>				
			žita <i>Cereals</i>	industrijsko bilje <i>Industrial crops</i>	povrće ¹⁾ <i>Vegetables</i>	voće <i>Fruit</i>	grožđe <i>Vine</i>
2004	62.5	12641	13	809	245	1429	1392
2005	77.6	15689	2	1032	146	1128	1480
2006	76.3	15422	11	-	142	1127	1208
2007	81.8	16523	-	831	284	1000	1778
2008	100.0	20198	1	-	491	1749	1897
Ø I - X 2008	98.2	1654	-	-	44	142	190
Ø I - X 2009	95.3	1605	5	30	26	58	149
2008							
X	156.3	2630	-	-	23	79	-
XI	115.4	1942	-	-	37	53	-
XII	102.1	1718	-	-	15	276	-
2009							
I	77.3	1302	-	301	21	5	-
II	63.5	1070	-	-	36	-	-
III	64.2	1082	-	-	9	-	-
IV	73.7	1241	-	-	7	-	-
V	71.0	1195	-	-	12	-	-
VI	104.5	1760	-	-	7	483	-
VII	110.3	1857	-	-	83	7	518
VIII	146.4	2465	-	-	14	74	812
IX	119.4	2009	27	-	39	2	163
X	123.1	2072	19	-	35	5	-
I-X 2009/I-X 2008	97.0	97.0	-	-	59.7	40.5	78.6

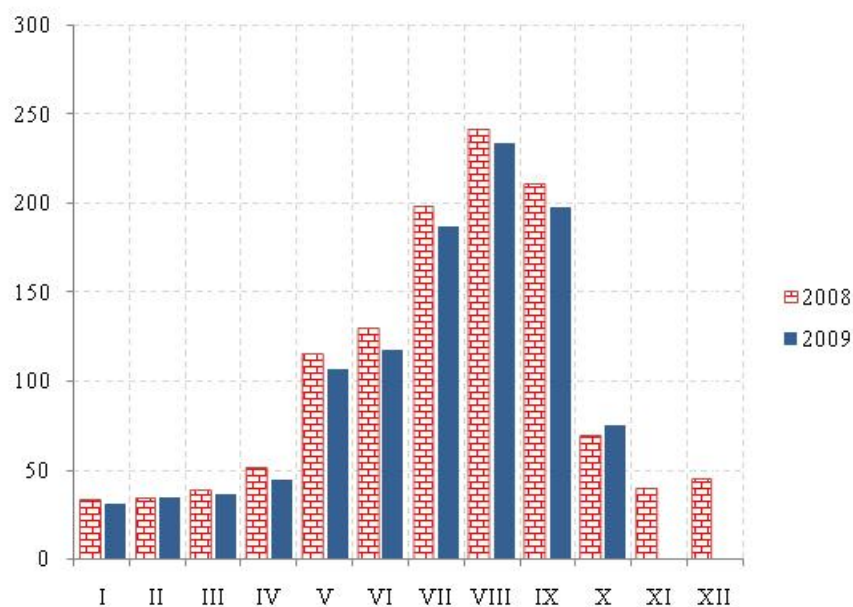
/ nastavak /

/ continued /

	Poljoprivreda i šumarstvo / <i>Agriculture and forestry</i>						Ribarstvo <i>Fishery</i>
	prerađevine voća i grožđa <i>Products of fruit and vine</i>	Stoka <i>Livestock</i>	živina i jaja <i>Poultry and eggs</i>	mlijeko i mliječni proizvodi <i>Milk and milk products</i>	koža i vuna <i>Leather and wool</i>	ostali proizvodi <i>Other products</i>	riba svježa <i>Fresh fish</i>
2004	76	2723	1192	3767	10	638	347
2005	67	4762	814	4762	8	1173	315
2006	100	5437	732	5379	-	969	317
2007	171	5912	800	4640	-	810	297
2008	189	8017	1082	5204	-	1312	256
Ø I - X 2008	17	578	85	449	-	131	18
Ø I - X 2009	4	663	145	386	-	38	101
2008							
X	-	1936	104	464	-	-	24
XI	-	1320	115	388	-	3	26
XII	19	914	114	332	-	-	48
2009							
I	-	439	114	356	-	-	66
II	-	438	116	412	-	-	68
III	8	482	102	351	-	24	106
IV	-	502	195	348	-	53	136
V	5	506	144	384	-	45	99
VI	10	517	189	399	-	35	120
VII	-	549	131	445	-	-	124
VIII	12	576	192	429	-	225	131
IX	-	1166	148	371	-	-	93
X	8	1453	119	363	-	-	70
I-X 2009/I-X 2008	25.2	114.6	169.9	86.0	-	29.2	562.7

¹⁾ Uključeni i krompir i pasulj.¹⁾ includes potatoes and beans.

UGOSTITELJSTVO / CATERING



Promet u ugostiteljstvu / Turnover in catering

Ø 2008 = 100

	Indeks ¹⁾ Index	Promet u hilj. EUR Turnover in thousands EUR
2004	41.6	59383
2005	45.9	65552
2006	90.1	128720
2007	95.2	136039
2008	100	142833
Ø 1 - X 2008	111.6	13288
Ø 1 - X 2009	105.9	12611
2008		
X	68.5	8153
XI	38.7	4602
XII	44.9	5354
2009		
I	30.3	3601
II	34.1	4055
III	36.2	4311
IV	44.1	5244
V	106.1	12633
VI	116.7	13888
VII	186.5	22199
VIII	233.3	27775
IX	197.6	23518
X	74.7	8886
I-X 2009/I-X 2008	94.9	94.9

TURIZAM / TOURISM

Dolasci i noćenja turista po zemljama i prema vrsti mjesta

Tourist arrivals and tourist overnight stays by country and type of resort

	2008	Kumulativ I - X		2009			
		2008	2009	VIII	IX	X	
Dolasci turista							Tourist arrivals
Ukupno	1188116	1153355	178731	399753	163036	33704	Total
Domaći	156904	147524	155852	42297	23069	8083	Domestic
Strani	1031212	1055931	1022879	357456	139967	25621	Foreigners
Noćenja turista – ukupno	7794741	7626603	7440764	2934772	907092	143609	Tourist overnight stays – total
Noćenja domaćih turista	828462	800308	831432	283130	110581	30899	Overnight stays of domestic tourists
Noćenja stranih turista	6966279	6826295	6609332	2651642	796511	112710	Overnight stays of foreigners
Albanija	154227	147798	187117	87997	11423	1816	Albania
Austrija	102367	101651	56870	21454	4593	1784	Austria
Belgija	48343	47872	46701	13362	9514	1372	Belgium
Bosna i Hercegovina	18459	759101	759419	286861	59572	16023	Bosnia and Herzegovina
Bugarska	241484	17915	22409	6047	4918	582	Bulgaria
Češka Republika	6983	241268	171433	74100	25923	331	Czech Republic
Danska	10382	6853	5256	964	884	241	Danmark
Finska	12176	11925	7642	1182	782	117	Finland
Francuska	143226	142311	192749	76685	26475	2301	France
Grčka	12087	11691	5137	1343	302	847	Greece
Holandija	33643	33315	27260	2827	3585	1591	Netherlands
Hrvatska	82356	78742	56716	15234	6879	3734	Croatia
Italija	151396	147811	223875	115213	23143	3013	Italy
Mađarska	187695	184584	204801	107560	21695	1972	Hungary
Makedonija	230249	209994	145306	40134	9523	6721	Macedonia
Norveška	60340	60074	43297	7852	6331	3733	Norway
Njemačka	137146	135892	108784	28417	20603	11413	Germany
Poljska	85424	85180	123354	59950	10297	942	Poland
Rumunija	15758	15442	37772	19662	6447	460	Romania
Rusija	899898	891071	1055318	363093	210900	9362	Russia
Slovačka	76260	76044	61770	30820	5638	111	Slovakia
Slovenija	79066	76865	82621	32613	8595	2459	Slovenia
Srbija ¹⁾	2877464	2845702	2277715	992817	244391	14532	Serbia ¹⁾
Švajcarska	12922	12721	11712	2726	1339	544	Switzerland
Švedska	55394	55159	47450	9163	7032	5104	Sweden
Ukrajina	181197	180585	89477	41291	16178	866	Ukraine
Velika Britanija	75257	73041	78191	18055	15177	9601	Great Britain
Ostale evropske zemlje	116592	114859	410619	179018	26580	5448	Other European countries
Izrael	9329	9077	19929	5059	1712	1341	Israel
Kanada	6696	6503	5933	1877	633	620	Canada
SAD	21404	19683	21109	3460	2754	2293	USA
Ostale vanevropske zemlje	26727	25566	21590	4749	2693	1436	Other non-European countries
Noćenja po vrstama mjesta – ukupno	7794741	7626603	7440764	2934772	907092	143609	Overnight stays by type of tourist resorts – total
Glavni administrativni centar	111271	95989	86239	6277	9821	9183	Main administrative center
Primorska	7459794	7326252	7165972	2895082	874686	122739	Coastal
Planinska	102560	93743	91637	17225	9882	5652	Mountain
Ostala turistička mjesta	120680	110243	95192	15987	12212	5844	Other tourist resorts
Ostala mjesta	434	376	1724	201	491	191	Other places
Primorska mjesta							Coastal resorts
Bar	1012543	977236	928889	347557	93063	19868	Bar
Budva	3291938	3259407	3243752	1316477	482960	46360	Budva
Kotor	345427	342557	314392	152108	43447	3737	Kotor
Tivat	275495	268778	238173	100237	25564	5490	Tivat
Ulcinj	661258	660007	656327	332534	32269	2646	Ulcinj
Herceg Novi	1873133	1818267	1784439	646169	197383	44638	Herceg Novi

TURIZAM / TOURISM**DOLASCI I NOĆENJA GOSTIJU PO VRSTAMA TURISTIČKIH MJESTA
TOURIST ARRIVALS AND TOURIST OVERNIGHT STAYS BY TYPE OF PLACE**

	Dolasci / Arrivals					Noćenja / Nights				
	glavni grad <i>Capital</i>	primorska mjesto <i>Coastal resorts</i>	planinska mjesto <i>Mountain resorts</i>	ostala turistička mjesto <i>Other tourist resorts</i>	ostala mjesto <i>Other places</i>	glavni grad <i>Capital</i>	primorska mjesto <i>Coastal resorts</i>	planinska mjesto <i>Mountain resorts</i>	ostala turistička mjesto <i>Other tourist resorts</i>	ostala mjesto <i>Other places</i>
2004	24580	639980	18529	20285	110	44750	4396888	54583	64763	110
2005	29819	747734	19185	23599	120	53886	5022260	53577	82003	121
2006	39295	859904	26362	28144	223	74169	5691770	68424	101677	230
2007	45588	1010742	39158	37642	302	104986	6961444	105892	121871	337
2008	50393	1058825	38304	40229	365	111271	7459794	102560	120682	434
Ø I - X 2008	4233	103998	3441	3632	32	9599	732625	9374	11024	38
Ø I - X 2009	4011	106828	3808	3151	75	8624	716597	9164	9519	172
2008										
X	4543	24561	2195	2985	20	9420	157303	4598	8910	20
XI	4364	9578	1545	2201	29	8440	78721	4041	6416	36
XII	3702	9271	2344	1711	16	6842	54821	4776	4023	22
2009										
I	2924	8806	3928	1887	19	7699	55637	13553	7482	27
II	3582	11973	2580	1840	13	7126	69010	5968	6773	19
III	4279	10124	1829	2841	14	8492	64217	3611	6952	14
IV	2962	22520	1466	2696	80	5359	107784	2798	7514	127
V	4189	64173	3832	3079	73	7713	336828	7352	7427	134
VI	5072	100485	4486	4007	82	12219	707176	9622	12451	146
VII	4646	291835	5634	4150	132	12350	1932813	15974	12550	374
VIII	3230	384515	6956	4890	162	6277	2895082	17225	15987	201
IX	4385	149476	4724	4386	65	9821	874686	9882	12221	491
X	4840	24374	2644	1735	111	9183	122739	5652	5844	191
I-X 2009/I-X 2008	94.7	102.7	110.7	86.7	234.4	89.8	97.8	97.8	86.3	452.6

DOLASCI I NOĆENJA TURISTA / TOURIST ARRIVALS AND TOURIST OVERNIGHT STAYS

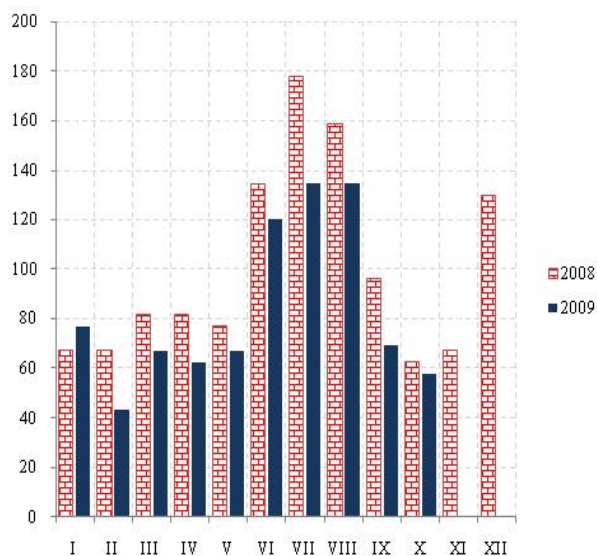
	Dolasci/Arrivals			Noćenja / Nights		
	ukupno / Total	domaći / Domestic	strani / Foreign	ukupno / Total	domaći / Domestic	strani / Foreign
2004	703484	515424	188060	4561094	3337247	1223847
2005	820457	548452	272005	5211847	3628337	1583510
2006	953928	576130	377798	5936270	3740179	2196091
2007	1133432	149294	984138	7294530	851045	6443485
2008	1188116	156904	1031212	7794741	828462	6966279
Ø I - X 2008	115335	14752	100583	762660	80031	682629
Ø I - X 2009	117873	15585	102288	744076	83143	660933
2008						
X	34304	6633	27671	180251	29183	151068
XI	17717	4087	13630	97654	16196	81458
XII	17044	5293	11751	70484	11958	58526
2009						
I	17564	6430	11134	84398	25279	59119
II	19988	5562	14426	88896	22507	66389
III	19087	4375	14712	83286	17711	65575
IV	29724	6677	23047	123582	26725	96857
V	75436	12604	62742	359454	51364	308090
VI	114132	13659	100473	741614	67059	674555
VII	306397	33096	273301	1974061	196177	1777884
VIII	399753	42297	357456	2934772	283130	2651642
IX	163036	23069	139967	907092	110581	796511
X	33704	8083	25621	143609	30899	112710
I-X 2009/I-X 2008	102.2	105.6	101.7	97.6	103.9	96.8

SAOBRAĆAJ, SKLADIŠTENJE I VEZE **TRANSPORT, STORAGE AND COMMUNICATIONS**

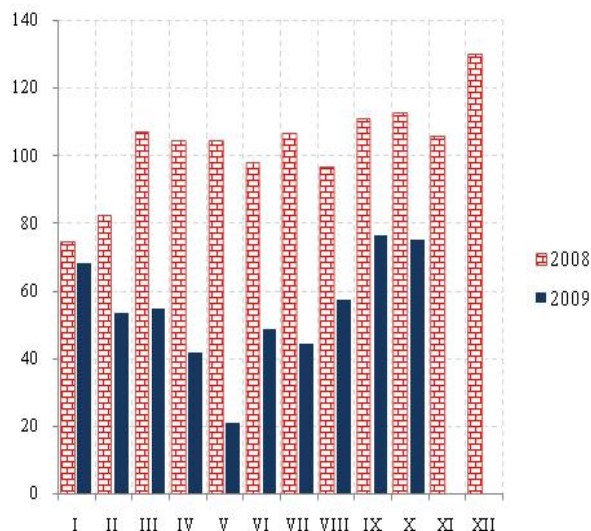
Željeznički saobraćaj / Railway transport

Ø 2008 = 100

Putnički / Passengers



Robni / Goods

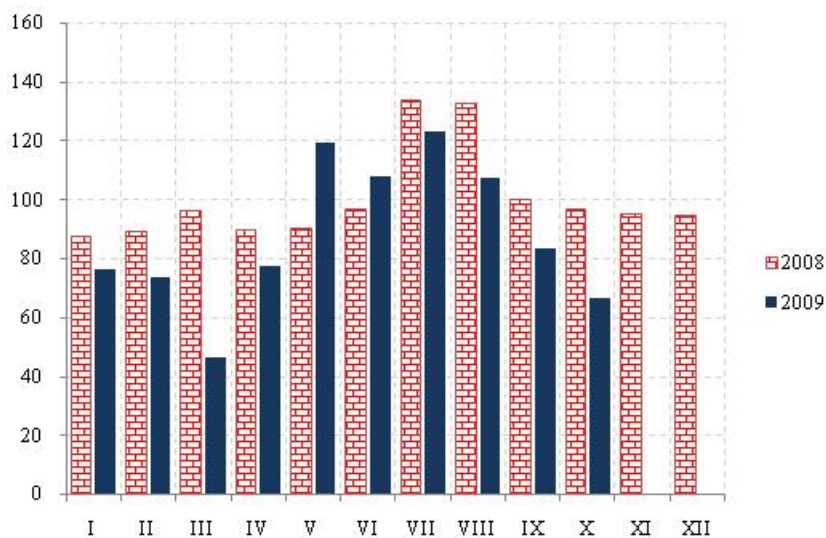


	ŽELJEZNIČKI SAOBRAĆAJ / RAILWAY TRANSPORT					
	Putnički / Passenger			Robni / Goods		
	indeks Index	putnici u 000 Passengers, thousands	putnički km u 000 Passenger kilometres in thousands	Indeks Index	prevoz robe u 000 t Goods in thousands tonnes	tonski km u 000 Tonne-kilometres in thousands
2004	103.7	1066	129600	50.3	1006	92502
2005	98.3	1137	122920	72.5	1182	132782
2006	105.2	1067	131500	99.0	2494	182163
2007	88.0	999	110000	100.6	1761	184957
2008	100.0	1031	125000	100.0	1740	183854
Ø I - X 2008	100.3	90	10450	98.2	145	15040
Ø I - X 2009	83.3	74	8670	53.9	69	8254
2008						
X	62.4	50	6500	110.7	149	16966
XI	67.2	60	7000	112.6	158	17251
XII	129.6	67	13500	105.7	136	16199
2009						
I	76.7	70	8000	68.0	88	10411
II	43.2	37	4500	53.1	58	8137
III	67.2	50	7000	54.4	80	8333
IV	62.4	50	6500	41.5	55	6360
V	67.2	65	7000	20.6	57	3162
VI	120.0	100	12500	48.6	57	7445
VII	134.4	120	14000	44.0	52	6743
VIII	134.4	115	14000	57.3	75	8782
IX	69.1	75	7200	76.3	88	11686
X	57.6	60	6000	75.0	83	11481
I-X 2009/I-X 2008	83.0	82.2	83.0	54.9	47.6	54.9

SAOBRAĆAJ, SKLADIŠTENJE I VEZE
TRANSPORT, STORAGE AND COMMUNICATIONS

Drumski saobraćaj - Putnički / Road transport - passengers

Ø 2008 = 100

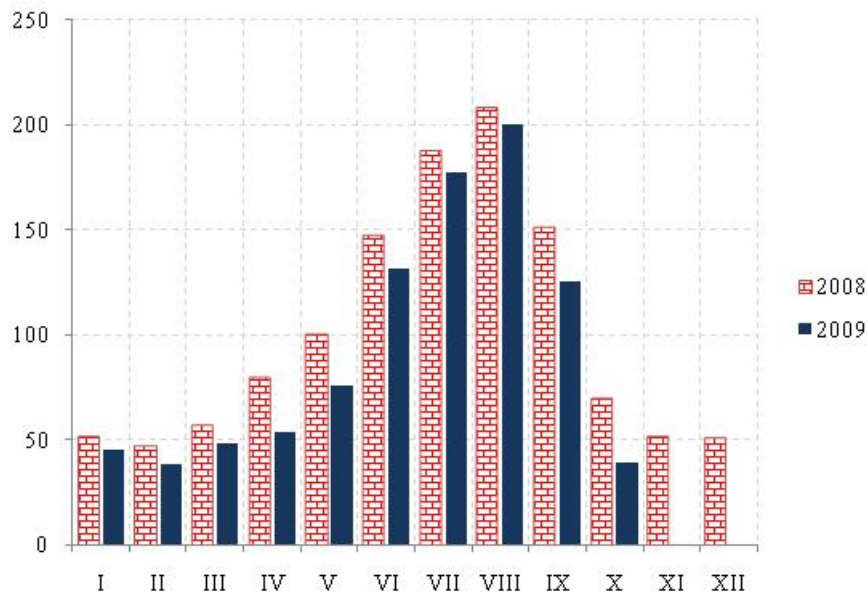


	DRUMSKI SAOBRAĆAJ / ROAD TRANSPORT							
	PUTNIČKI / PASSENGERS				ROBNI / GOODS			
	indeks Index	putnici u 000 Passengers, thous.	putnički km u 000 Passenger kilometres in thous.	autobuski km u 000 Bus kilometres in thous	indeks Index	roba u 000 tona Goods in thousands tonnes	tonski km u 000 Tonne- kilometres in thous.	kamionski km u 000 Truck kilometres in thous.
2004	81.5	4488	100620	11472	47.0	1639	64508	9332
2005	68.7	4302	84883	9593	44.5	1857	61100	9365
2006	93.0	4825	114695	16809	53.0	1961	72724	15167
2007	114.4	5738	141247	17630	67.0	2131	91786	16269
2008	100.0	5503	123421	18068	100.0	2468	137058	14857
Ø I - X 2008	101.1	469	10399	1518	102.7	206	11733	1251
Ø I - X 2009	88.1	480	9060	1379	129.2	153	14753	985
2008								
X	96.6	449	9940	1539	86.1	208	9833	1325
XI	94.8	382	9746	1427	86.0	214	9827	1238
XII	94.2	434	9688	1457	86.6	197	9903	1110
2009								
I	76.1	370	7833	1093	75.0	160	8571	994
II	73.4	414	7545	1188	108.3	186	12365	1015
III	46.3	234	4763	894	108.3	196	12370	1016
IV	77.4	583	7960	1370	101.6	185	11601	1080
V	119.2	567	12262	1659	194.7	125	22237	998
VI	108.0	463	11107	1509	147.1	125	16800	904
VII	123.2	598	12677	1586	143.7	147	16417	1025
VIII	107.2	642	11028	1687	130.0	141	14850	866
IX	83.4	508	8576	1461	151.0	157	17246	1090
X	66.6	422	6852	1354	84.4	106	15074	858
I-X 2009/I-X 2008	87.1	102.3	87.1	90.8	125.8	74.3	125.8	78.3

SAOBRAĆAJ, SKLADIŠTENJE I VEZE
TRANSPORT, STORAGE AND COMMUNICATIONS

Ø 2008 = 100

Vazdušni saobraćaj - putnički / Air transport - passengers



	GRADSKI SAOBRAĆAJ LOCAL TRANSPORT		VAZDUŠNI SAOBRAĆAJ, PROMET NA AERODROMIMA AIR TRANSPORT, TRAFFIC AT AIRPORTS		
	indeks Index	prevezeno putnika u 000 Passengers in thousands	PUTNIČKI / PASSENGERS		ROBNI / GOODS
			indeks Index	prevoz putnika Transport of passengers	prevoz robe u tonama Transport of goods in tonnes
2004	172.7	2673	59.9	664801	647
2005	140.7	2177	62.9	697740	1011
2006	102.8	1591	75.1	833715	1067
2007	96.3	1491	92.3	1024491	1320
2008	100.0	1547	100.0	1109095	1490
Ø I - X 2008	93.0	120	109.8	10150	129
Ø I - X 2009	34.1	44	93.4	86338	83
2008					
X	122.6	158	69.3	64011	116
XI	122.6	158	51.5	47555	108
XII	145.1	187	50.3	46453	90
2009					
I	38.7	50	45.3	41882	47
II	43.4	56	38.4	35489	112
III	43.4	56	48.1	44424	65
IV	38.0	49	53.6	49502	83
V	38.0	49	75.7	69983	63
VI	20.9	27	131.5	121559	83
VII	20.2	26	177.4	163959	111
VIII	23.2	30	200.0	184744	77
IX	38.7	50	125.3	115783	75
X	39.5	51	39.0	36053	109
I-X 2009/I-X 2008	36.7	36.7	85.0	85.0	64.3

SAOBRAĆAJ, SKLADIŠTENJE I VEZE / TRANSPORT, STORAGE AND COMMUNICATIONS**POMORSKI SAOBRAĆAJ / MARINE TRANSPORT**

	Prevoz robe / <i>Transport of goods</i>			Promet u lukama (u tonama) / <i>Turnover in harbours (tonnes)</i>				
	Indeks <i>Index</i>	u 000 t <i>In thous. tonnes</i>	tonske milje u hilj.. <i>Tonne milles in thousands</i>	Indeks <i>Index</i>	ukupno <i>Total</i>	unutrašnji promet <i>Internal turnover</i>	izvoz ¹⁾ <i>Export</i>	uvoz ²⁾ <i>Import</i>
2005	65.9	60	232	104.6	2039211	442	1166959	851211
2006	1079	818	380	102.0	1988204	116	1027208	941905
2007	115.9	785	408	106.3	2071310	1825	791509	1280327
2008	100	595	352	100	1949409	8350	683990	1219948
Ø I - X 2008	105.8	51	31	100.7	163575	835	57558	103166
Ø I - X 2009	81.9	46	24	78.9	128100	-	52348	72997
2008								
X	78.5	56	23	105.2	170847	-	64523	103612
XI	75.1	56	22	95.2	154521	-	61835	92686
XII	54.6	30	16	98.0	159137	-	46380	95598
2009								
I	51.2	37	15	79.3	128880	-	55633	70514
II	47.8	45	14	72.9	118436	-	51933	64956
III	61.4	43	18	78.8	127957	-	43107	84850
IV	37.5	42	11	73.0	118617	-	42209	69515
V	58.0	49	17	74.8	121454	-	47305	72909
VI	41.0	51	12	76.2	123852	-	57424	65095
VII	1775	45	52	82.3	133767	-	62765	68956
VIII	187.7	37	55	84.4	137129	-	54236	79868
IX	99.0	67	29	89.4	145229	-	50015	88445
X	61.4	46	18	77.4	125677	-	58857	64865
I-X 2009/I-X 2008	76.8	91.0	76.8	78.3	78.3	-	90.9	78.7

¹⁾ Tranzit utovar prikazan kod izvoza ²⁾ Tranzit istovar prikazan kod uvoza / ¹⁾ Transit loading presented in export. ²⁾ Transit loading presented in import.

P T T SAOBRAĆAJ / POSTAL, TELEGRAPH AND TELEPHONE (PTT) COMMUNICATIONS

	Poštanske usluge / <i>Postal services</i>		Telegrafske usluge / <i>Telegraph services</i>		Telefonske usluge / <i>Telephone services</i>	
	pisma u 000 komada <i>Lletters in thousands pcs.</i>	paketi u 000 komada <i>Packages in thousands pcs.</i>	uputnice u 000 komada <i>Postal orders in thousands pcs.</i>	telegr. u 000 komada <i>Telegraphs in thousands pcs.</i>	fiksna telefonija <i>Fixed telephony</i>	mobilna telefonija <i>Mobile telephony</i>
					minuti u 000 <i>Minutes in thous.</i>	minuti u 000 <i>Minutes in thous.</i>
2005	16185	56	65	572	876231	-
2006	17396	30	45	581	862596	488802
2007	18291	23	44	589	864471	660168
2008	20521	25	37	507	650567	1027704
Ø I - X 2008	1679	2	3	43	56326	84833
Ø I - X 2009	1745	2	3	40	44192	96130
2008						
X	1630	2	3	43	46013	88843
XI	1728	2	3	35	43211	84952
XII	2000	3	3	45	44081	99420
2009						
I	1722	2	2	43	42304	88991
II	1620	2	3	40	39124	96414
III	1661	2	3	47	42082	92185
IV	1599	2	3	40	37672	90754
V	1704	2	3	36	36488	95900
VI	1653	2	3	40	39645	96173
VII	1827	3	3	36	61040	102649
VIII	1874	2	3	39	69748	104594
IX	1864	2	3	35	38940	94612
X	1927	2	3	40	34872	99029
I-X 2009/I-X 2008	103.9	100.0	100.0	93.0	78.4	113.3

DEPOZITI STANOVNIŠTVA / DEPOSITS BY HOUSEHOLDS

u mil. EUR, stanje na kraju perioda

balance at end-periods, EUR mill..

	Depoziti po videnju <i>Demand deposits</i>	Oročeni depoziti / <i>Time deposits</i>					Ukupno <i>Total</i>
		do 3 mjeseca <i>Up to 3 mounts</i>	od 3 mjeseca do godinu dana <i>From 3 mounts to 1 years</i>	od 1 do 3 godine <i>From 1 to 3 years</i>	preko 3 godine <i>Over 3 years</i>	ukupno <i>Total</i>	
2004.	40,1	5,1	29,7	4,4	0,1	39,2	79,3
2005 ¹⁾	93,5	7,6	55,0	19,4	0,3	82,2	175,7
2006 ¹⁾	294,4	25,8	114,1	64,8	0,3	205,0	499,4
2007 ¹⁾	466,0	145,6	278,3	121,4	8,0	553,1	1019,4
I	299,9	31,1	188,5	4,6	0,4	224,6	524,5
II	333,4	31,2	190,5	14,8	0,4	236,9	570,3
III	367,7	32,1	210,3	9,9	0,5	252,8	620,5
IV	415,9	33,5	176,5	56,9	0,4	267,3	683,3
V	427,3	38,9	181,0	71,5	0,4	291,9	719,2
VI	438,6	49,9	181,3	96,2	0,5	328,1	766,7
VII	475,3	53,1	216,9	118,3	0,4	388,8	864,2
VIII	493,0	84,5	237,0	90,0	0,4	411,9	905,0
IX	479,5	55,0	299,0	89,1	0,5	443,7	923,2
X	474,8	130,9	236,9	109,6	4,6	482,2	957,0
XI	457,1	136,9	248,7	120,5	7,7	513,8	970,9
XII	466,0	145,6	278,4	121,4	8,0	553,4	1019,4
2008							
I	469,6	136,1	294,1	134,3	8,3	572,8	1.042,4
II	465,4	146,0	332,2	106,0	9,2	593,4	1.058,8
III	462,2	140,8	307,0	141,0	10,0	598,8	1.061,0
IV	464,2	150,3	309,9	154,0	10,9	625,1	1.089,3
V	438,7	168,5	313,6	151,6	10,4	644,1	1.083,0
VI	410,2	163,1	330,1	146,6	21,5	664,8	1.075,4
VII	416,9	154,9	330,2	175,3	33,6	694,0	1.110,9
VIII	418,7	168,7	352,2	159,1	24,4	704,4	1.123,1
IX	410,6	166,4	359,6	153,8	23,7	703,5	1.114,1
X	331,5	121,2	337,5	157,2	34,7	650,6	982,1
XI	298,9	87,7	259,5	228,3	23,4	599,0	898,1
XII	302,5	91,0	224,5	221,8	16,5	553,8	856,5
2009							
I	288,0	83,7	233,2	200,4	16,7	534,0	822,3
II	270,8	76,8	237,0	192,0	16,3	522,1	792,8
III	281,5	127,7	249,2	107,6	14,5	499,0	780,6
IV	256,6	135,1	264,7	92,0	14,0	505,8	762,4
V	248,7	140,9	254,2	89,2	14,0	498,3	747,0
VI	248,1	153,6	247,4	86,4	14,8	502,2	750,3
VII	258,0	159,6	245,4	87,3	13,6	506,0	764,0

IZVOR: Centralna banka Crne Gore

¹⁾ Stanje na 31.XII

SOURCE: Central Bank of Montenegro

¹⁾ Balance on 31 December

PLATNI BILANS CRNE GORE ¹⁾ u hilj.EUR / *BALANCE OF PAYMENTS OF MONTENEGRO* ¹⁾ EUR thous

Kvartali Quarters	A Ukupno Total	TEKUĆI RAČUN / Current account							
		1 (1.1 - 1.2) Roba / Goods		2 (2.1 - 2.2) Usluge / Services		3 (3.1 - 3.2) Dohoci / Income		4 (4.1 - 4.2) Tekući transferi Current transfers	
		izvoz Export	uvoz Import	prihodi Revenues	rashodi Expenditures	prihodi Revenues	rashodi Expenditures	prihodi Revenues	rashodi Expenditures
	(1+2+3+4)	1.1	1.2	2.1	2.2	3.1	3.2	4.1	4.2
2007	-642,786	543,411	1,702,733	674,056	233,923	89,420	72,410	100,775	41,381
I	-149,269	127,530	301,431	49,268	45,215	20,148	12,905	23,281	9,946
II	-232,478	141,078	457,791	119,309	52,662	21,312	16,412	24,731	12,043
III	49,246	143,731	480,119	425,768	57,774	22,733	19,246	22,189	8,036
IV	-310,284	131,072	463,392	79,710	78,272	25,228	23,847	30,574	11,357
2008	-1,005,664	519,088	2,008,691	754,278	351,196	128,356	120,570	109,321	36,248
I	-312,392	108,253	438,101	64,926	69,646	27,988	17,409	21,911	10,314
II	-354,470	155,874	576,827	134,461	93,951	29,811	24,609	29,483	8,711
III	-51,419	146,290	572,384	465,793	102,428	36,359	45,093	28,819	8,775
IV	-287,383	108,671	421,380	89,098	85,171	34,198	33,459	29,108	8,448
2009 ²⁾	-393,840	149,850	615,969	185,314	140,304	59,556	70,059	54,384	16,611
I	-192,498	83,630	286,941	55,753	64,370	29,739	25,925	26,202	10,587
II	-201,342	66,220	329,028	129,561	75,935	29,817	44,135	28,183	6,025

/nastavak /

/ continued /

Kvartali Quarters	B Ukupno Total	KAPITALNI I FINANSIJSKI RAČUN / CAPITAL AND FINANCIAL ACCOUNT						Neto greške i omaške Net errors and omissions
		račun kapitala Capital account	2 (2.1+2.2+2.3+2.4)					
			Finansijski račun / Financial account					
			direktne investicije-neto Direct investments - net	porfolio investicije-neto Portfolio investments - net	ostale investicije-neto Other investments - net	promjene neto strane aktive kom. B. Change in Net Foreign Assets	promjena rezervi CBCG Change in CBM reserves	
	(1+2)	1	2.1	2.2	2.3	2.4	2.5	(A+B)
2007	753,042	-1,435	524,876	4,700	375,702	-150,800	-110,257	753,042
I	224,387	-642	132,412	9,731	116,513	-33,626	-75,117	224,387
II	233,960	-734	196,630	-8,307	126,651	-80,280	-1,482	233,960
III	-164,174	39	47,163	14,800	-140,368	-85,808	114,929	-164,174
IV	458,870	-97	148,671	-11,524	272,906	48,914	-148,586	458,870
2008	1,049,288	-463	567,609	-15,538	342,378	155,301	-43,624	1,049,288
I	381,372	-77	140,874	-7,638	243,507	4,707	-68,980	381,372
II	317,062	-24	179,220	-3,573	181,813	-40,374	37,408	317,062
III	-108,985	-209	131,524	1,617	-195,411	-46,505	160,403	-108,985
IV	459,838	-153	115,991	-5,943	112,469	237,474	-172,455	459,838
2009 ²⁾	290,952	1,992	323,554	-29,127	-80,130	74,664	102,888	290,952
I	182,855	-3	88,781	-10,471	42,780	61,768	9,643	182,855
II	108,097	1,995	234,772	-18,656	-122,910	12,896	93,245	108,097

¹⁾ IZVOR: Centralna banka Crne Gore¹⁾ SOURCE: Central Bank of Montenegro²⁾ Prethodni podaci²⁾ Preliminary data

METODOLOŠKA OBJAŠNJENJA**STANOVNIŠTVO**

Izvori podataka – Podaci o rođenim, umrlim i zaključenim brakovima prikupljaju se od matičara, a podaci o razvedenim brakovima od sudova nadležnih za razvod braka.

Podaci o unutrašnjim migracijama prikupljaju se od Ministarstva unutrašnjih poslova i javne uprave.

Jedinica posmatranja su pojedinačni događaji preseljenja (doseljenja i odseljenja) unutar granica Crne Gore.

Obuhvatnost i definicije – Podaci o prirodnom kretanju stanovništva obuhvataju broj rođenih, umrlih i vjenčanih, koji je registrovan u matičnoj službi, dok se broj razvedenih brakova prikupljaju od strane nadležnih sudova.

Jedinica posmatranja su pojedinačni događaji preseljenja (doseljenja i odseljenja) unutar granica Crne Gore.

Metodološki materijal – Detaljna objašnjenja o metodologiji primjenjenoj u vitalnoj statistici nalaze se u Uputstvu za matičare o popunjavanju statističkih listića (o rođenju, slučaju smrti i vjenčanju) i u Uputstvu za sudije o popunjavanju statističkih listića o razvedenom braku.

ZAPOSLENOST I ZARADE**Zaposlenost**

Podaci o godišnjem prosjeku zaposlenih izračunati su na osnovu dva stanja (31.marta i 30.septembar), a dobijeni su redovnim polugodišnjim izvještajem o zaposlenim i zaradama zaposlenih (RAD – 1P) kao i na osnovu podataka koji su regulisani Zakonom o evidencijama u oblasti rada i zapošljavanja ("Sl.list RCG", br.69/03), a vode ih Fondovi Penzijsko invalidskog osiguranja i Zdravstva, koje Zavod za statistiku redovno preuzima od istih.

Podaci o mjesečnom broju zaposlenih dobijeni su na osnovu redovnog mjesečnog istraživanja o zaposlenima i zaradama zaposlenih (Rad – 1, koje se vrši na bazi uzorka i prijava – odjava osiguranika koje vode Republički Fond Penzijsko invalidskog osiguranja i Fond Zdravstva.

Obuhvatnost

Polugodišnjim izvještajem o zaposlenima i zaradama zaposlenih (RAD – 1P) obuhvaćena su preduzeća, ustanove i organizacije svih oblika svojine. Ovim istraživanjem nijesu obuhvaćeni strani državljani zaposleni u našoj zemlji. Ne smatraju se zaposlenima lica koja rade po ugovoru o djelu ili po ugovoru o obavljanju privremenih i povremenih poslova.

Podaci o nezaposlenim licima obuhvataju sva lica koja su kod Zavoda za zapošljavanje registrovana kao nezaposlena.

Definicije

Pod pojmom zaposleni podrazumijevaju se sva lica koja imaju zasnovan radni odnos sa preduzećem, ustanovom ili organizacijom ili individualnim poslodavcem bez obzira da li su radni odnos zasnovali na neodređeno ili određeno vrijeme i da li rade puno ili kraće od punog radnog vremena. Od 1.januara 2009.godine u

METHODOLOGICAL EXPLANATIONS**POPULATION**

Data sources – Data on births, deaths and marriages are collected from Registry Offices and data on divorces from the courts of respective jurisdiction.

Data on internal migrations are collected from the Ministry of Internal Affairs and Public Administration.

Coverage and definitions – Data on population changes include the number of births, deaths and marriages, registered by Registry Offices, while the number of divorces is collected by the courts of respective jurisdiction.

Observation units are individual occurrences of migrations (moving in and out) within the borders of Montenegro.

Methodological material – Detailed explanation on methodology applied in vital statistics can be found in the Instructions for the filling and submitting of statistical questionnaires (on births, deaths and marriages) as well as in the Instructions for judges for the filing of statistical questionnaires on divorces.

EMPLOYMENT AND EARNINGS**Employment**

The data on annual average of employees are calculated on the basis of two reports (31 March and 30 September) and they are obtained from the regular semiannual report on employees and their earnings (RAD-1P), as well as on the basis of data regulated by the Law on Records in Labor and Employment ("Official Gazette of Republic of Montenegro", No. 69/03), and managed by the Fund for Pension and Disability Insurance and Health Fund.

The data on monthly number of employees are obtained by regular monthly survey of employees and their earnings (RAD-1), conducted on the basis of sample, and registration / withdrawal of beneficiaries in Republic Health Fund and Fund for Pension and Disability Insurance.

Coverage

The Semiannual Report on employees and their earnings (RAD-1) includes enterprises, institutions and organizations of all types of ownership. This survey does not include foreign citizens employed in our country. The persons that work pursuant to a job contract or a contract on casual engagement are not considered as employed.

Data about unemployed persons include all persons which are registered as unemployed in the Employment Agency.

Definitions

The term "employees" refers to all persons being employed in enterprises, institutions, organizations or by self-employed individuals no matter whether their employment status is based on a permanent or temporary contract and whether they work on a full-time or part-time basis. From the 1st January 2009 in the total number of employees enter also employed foreigners

ukupan broj zaposlenih u Crnoj Gori ulaze i zaposleni stranci na osnovu čl.1 Zakona o zapošljavanju i radu stranaca ("Sl.list CG", br. 22 od 02.04.2008.godine), a stupio na snagu 01.januara 2009.godine „stranac se može zaposliti, odnosno, raditi u Crnoj Gori pod uslovima utvđenim zakonom, kolektivnim ugovorom, potvrđenim i objavljenim međunarodnim ugovorom i opšte prihvaćenim pravilima međunarodnog prava"

Nezaposleni

Definicije

Podaci o broju nezaposlenih lica preuzeti su od Zavoda za zapošljavanje i obuhvataju samo lica koja su registrovana kod ove službe.

U grupi „lica koja traže zaposlenje“ obuhvaćena su lica shodno članu 4 Zakona o zapošljavanju, stav prvi: „nezaposlenim licem, u smislu ovoga Zakona, smatra se lice od 15-65.godina života koje se nalazi na evidenciji Zavoda za zapošljavanje Crne Gore (u daljem tekstu: Zavod) i aktivno traži zaposlenje, kao i strani državljanin ili lice bez državljanstva, koji ima odobrenje za stalno nastanjenje i odobrenje za zasnivanje radnog odnosa u Crnoj Gori”.

U grupi „lica koja primaju novčanu naknadu“ obuhvaćena su lica koja shodno članu 48 Zakona o zapošljavanju Crne Gore, stav prvi: „pravo na novčanu naknadu ostvaruje osiguranik kojem je u smislu Zakona o radu prestao radni odnos bez njegovog zahtjeva, saglasnosti ili krivice, a koji je bio u radnom odnosu kod jednog ili više poslodavaca sa punim radnim vremenom najmanje 9 mjeseci neprekidno ili 12 mjeseci sa prekidima u posljednjih 18 mjeseci (u daljem tekstu: staž osiguranja), ako se prijavi Zavodu u roku od 30 dana od dana prestanka radnog odnosa“.

U grupi „nezaposlene osobe” koje su se tokom izvještajnog mjeseca prijavile na evidenciju Zavoda za zapošljavanje Crne Gore obuhvataju grupe novoprijavljenih lica”:

- Prvi put, nema zapošljavanja – odnosi se na lica koja su se prvi put prijavila na evidenciju Zavoda, a do tada nijesu bila zapošljavana;
- Prvi put, ima zapošljavanja – lica koja su se prvi put prijavila na evidenciju Zavoda, a do tada nijesu bila zapošljavana;
- Nije prvi put, nema zapošljavanja- lica koja su se više puta prijavljivala na evidenciju Zavoda, a nisu bila zapošljavana;
- Nije prvi put, ima zapošljavanja – lica koja su se više puta prijavljivala na evidenciju Zavoda, a bila su zapošljavana;

U grupi „prestanak vođenja evidencije“ obuhvaćena su lica koja shodno članu 86 Zakona o zapošljavanju, stav prvi: „evidencija o nezaposlenom licu prestaje da se vodi ako:

according to the article 1 of the Law on Employment and work of the foreigners (Official Gazette of Montenegro, number 22 from 2nd April, 2008), which took effect on the 1st January 2009 ”strangers can be employed, i.e., work in Montenegro under condition established in Law, collective contract, confirmed and published international contract and generally accepted regulation of international Law”

Unemployed

Definitions

Data about unemployed persons are taken from the Employment Agency and include only persons registered at the Agency.

The group “persons looking for employment” includes persons defined according to the article 4, par. 1 of the Law on Employment as: “an unemployed person, according to this Law, is a person aged 15-65 which is in the records of the Employment Agency of Montenegro (furthermore: EAM) and is actively looking for employment, as well as a foreigner or a person without citizenship, who has the permission for permanent residence as well as the permission for starting work in Montenegro”.

The group “persons receiving social benefits” includes persons who, according to the article 4, par. 1 of the Law on Employment: ‘receive the monetary benefit for stopped working without person’s request, compliance or guilt, and who was working for one ore more employers the full working time for at least 9 months without a break or 12 months with breaks in the last 18 months (furthermore: duration of insurance), if he/she reports to the EAM within 30 days of stopping to work.

The group “unemployed persons“ who reported themselves to the records of the Employment Agency of Montenegro within the reporting month includes the groups of newly reported persons:

- *First time, no employment– refers to persons who are reported for the first time in the records of EAM, and were not previously employed;*
- *First time, with employment – persons who are reported for the first time in the records of the EAM, and used to be employed;*
- *Not-first time, no employment – persons who reported to the records of EAM several times, and were not employed;*
- *Not-first time, no employment persons who reported to the records of EAM several times, and used to be employed;*

The group “stopped keeping records” includes persons who, according to the article 86, refer to the par. 1 of the Law on Employment: “records on the unemployed person is stopped to be kept if:

1. zaključi ugovor o radu sa punim radnim vremenom;
2. se odjavi iz evidencije nezaposlenih lica;
3. odbije uključivanje ili ne izvršava obaveze utvrđene ugovorom o uključivanju u program aktivne politike zapošljavanja;
4. postane vlasnik ili većinski suvlasnik preduzeća;
5. postane preduzetnik;
6. odbije odgovarajuće zaposlenje;
7. nije dalo tačne podatke o ispunjavanju uslova za sticanje statusa nezaposlenog lica;
8. navršio 65 godina života;
9. ostvari pravo na starosnu ili invalidsku penziju;
10. ostane potpuno nesposoban za rad;
11. ode na izdržavanje kazne zatvora u trajanju dužem od šest mjeseci;
12. aktivno ne traži zaposlenje;
13. je radno angažovano suprotno propisima o radnim odnosima („rad na crno“);
14. postane osiguranik – zemljoradnik, u skladu sa Zakonom o penzijskom i invalidskom osiguranju“.

- 1 the person signs contract on work with full working time;
- 2 is signed off from the records of the unemployed persons;
- 3 refuses inclusion or does not perform obligations specified in the agreement on the inclusion in the programme of active employment policy;
- 4 becomes the owner or major co-owner of an enterprise;
- 5 becomes an entrepreneur;
- 6 refuses appropriate employment;
- 7 did not give correct data on meeting conditions for getting the unemployment status
- 8 is 65 years old;
- 9 gets right to the old-age and survivor pensions;
- 10 is completely incapable to work;
- 11 is serving the imprisonment punishment longer than 6 months;
- 12 is not actively looking for employment;
- 13 is working contrary to the regulations on labour (“unregistered work”);
- 14 becomes insured by agriculture, in compliance with the Law on pension and disability insurance.

ZARADE

Izvori podataka

Podaci o prosječnim zaradama prikazuju zarade isplaćene u mjesecu i dobijeni su iz redovnog mjesečnog istraživanja Mjesečni izvještaj o zaposlenim i zaradama (obrazac RAD-1).

Obuhvatnost

Istraživanjem su obuhvaćena preduzeća, ustanove, zadruge ili organizacije, svih oblika svojine kao i njihove jedinice u sastavu, po organizaciono teritorijalnom principu, počev od nivoa opštine.

Definicije

“Zarada zaposlenog je bruto zarada koja obuhvata zaradu za obavljeni rad i vrijeme provedeno na radu, uvećanu zaradu, naknadu zarade i druga lična primanja, koja podležu plaćanju poreza na dohodak fizičkih lica, utvrđena zakonom, kolektivnim ugovorom i ugovorom o radu.” Član 78 Zakona o radu (“Sl.list CG”, br. 49/08) i član 1 Zakona o izmjenama i dopunama Zakona o doprinosima za obavezno socijalno osiguranje (“Sl.list CG”, br. 79 od 23.decembra 2008.godine).

Zarada se uvećava u skladu sa kolektivnim ugovorom i ugovorom o radu za: rad duži od punog radnog vremena; noćni rad; rad u dane državnih i vjerskih praznika koji su zakonom utvrđeni kao neradni dani; minuli rad i u drugim slučajevima utvrđenim kolektivnim ugovorom i ugovorom o radu.

Prosječna zarada izračunava se tako što se ukupno isplaćena masa zarada u mjesecu dijeli sa brojem zaposlenih na koje se odnose izvršene isplate.

Zaradu bez poreza i doprinosa čini zarada umanjena za poreze i doprinose na teret zaposlenog.

WAGES

Data sources

The data on average wages present wages paid out in a month, and are obtained from regular monthly survey Monthly report on employees and their earnings (questionnaire RAD-1).

Coverage

The survey covers enterprises, institutions, cooperatives or organizations as well as their composite units of all kinds of ownership, by organizational and territorial principle, starting from the level of municipality.

Definitions

Wage of the employee is the gross earning that is consisted of earning made for work performed and time spent at work, increased earning, remuneration of earnings and other personal incomes, which are subject to income tax of natural persons, and it is determined by collective agreement and the agreement on the work. “Article 78 of the Law on work (“Official Gazette of Montenegro”, number 49/08) and article 1 of the Law on Amendments to the Act on contributions for compulsory social insurance (“Official Gazette of Montenegro”, number 79 of 23rd December, 2008)

Earnings increases in accordance with the collective agreement and the agreement on the work for: work longer than full working hours, night work, work in the days of national and religious holidays that are fixed by law as non-working days, past performance in other cases established by collective agreement and the agreement on work.

Calculation of the average earnings is done so that the total sum of all monthly earnings is divided by the number of employees to whom the paid earnings refer.

Indeks realne prosječne zarade bez poreza i doprinosa predstavlja odnos između indeksa nominalne prosječne zarade bez poreza i doprinosa i indeksa potrošačkih cijena.

CIJENE

CIJENE PROIZVODJAČA INDUSTRIJSKIH PROIZVODA

Pod prodajnom cijenom proizvođača industrijskih proizvoda podrazumijeva se cijena po kojoj proizvođači prodaju svoje proizvode u najvećim količinama nadomaćem tržištu. U cijenu ulazi regres koji ostvaruje prodavac a odbija se rabat, popust, kasa skonto i sl, ako ih prodavac odobrava kupcima. U cijenu ne ulazi porez na dodatu vrijednost.

Ove cijene prikupljaju se mjesečnim izvještajima koje neposredno dostavljaju izabrana preduzeća za oko 250 industrijskih proizvoda. Izbor industrijskih preduzeća izvršen je prema njihovom učešću u ukupnoj realizaciji određene oblasti.

Prosječne mjesečne cijene računaju se ponderisanjem tekućih mjesečnih cijena odgovarajućih proizvoda, a godišnje prosječne cijene proizvođača industrijskih proizvoda predstavljaju neponderisani prosjek mjesečnih cijena.

Indeksi cijena izračunavaju se ponderima na bazi podataka o realizaciji industrijske proizvodnje. Svake godine vrši se korekcija pondera, a novi ponderi izračunavaju se svake pete godine.

Indeksi cijena proizvođača industrijskih proizvoda preračunavaju se početkom svake godine na prethodnu godinu kao bazu.

POTROŠAČKE CIJENE

Potrošačke cijene su cijene po kojima trgovina na malo, individualni proizvođači i vršioci usluga prodaju svoje proizvode i usluge krajnjim potrošačima, uključujući sve poreze i takse koje se plaćaju u prometu na malo.

Potrošačke cijene prate se u četiri grada Crne Gore: Podgorici, Nikšiću, Kotoru i Pljevljima, koji predstavljaju veće tržišne centre. Cijene industrijsko-neprehrambenih proizvoda snimaju se jedanput mjesečno u periodu od 3. – 10.-og, industrijsko - prehrambenih proizvoda od 11. - 14.-og, usluga od 14-16.-og, a cijene poljoprivrednih proizvoda od 15 - 21.-og u mjesecu.

Prosječne mjesečne cijene za grad kod svih proizvoda i usluga, računaju se neponderisanom geometrijskom sredinom, dok se prosječne mjesečne

Net salaries and wages are tax and contributions deducted (gross) salaries and wages.

Index real average wage without taxes and contributions is the relationship between indices of nominal average wage without taxes and contributions, and the index of consumer prices.

PRICES

PRODUCER PRICES OF INDUSTRIAL PRODUCTS

Producer prices of industrial products is the price according to which the producers sell their products in the most numerous quantities on the domestic market. The price also includes the regress achieved by the producer, and deduces the rebate, discounts, cash sconto, etc., if the producer approves them to the buyer.

The price does not include value added tax..

These prices are collected through the monthly surveys submitted directly by the chosen enterprises for about 250 industrial products. The list of industrial enterprises is done on the basis of their participation in the total realization of certain area.

Average monthly prices are calculated by weighting the current monthly prices of corresponding products, and annual average producer prices of industrial products present the un-weighted average of the monthly prices.

Price indexes are calculated with weights based on the data on the total realization of industrial production. The correction of weights is done every year, and the new weights are calculated every five years.

Indices of producer prices of industrial products are recalculated in the beginning of each year using the previous year as the base year.

CONSUMER PRICES

Consumer prices are the prices at which the retail shop, custom manufacturers and service providers sale their products and services to consumers, including all taxes and fees that are paid in the small.

Consumer prices are monitored in the four cities of Montenegro: Podgorica, Niksic, Pljevlja and Kotor, which represent major market centers. Prices non-industrial products are recorded once a month for a period of 3 - 10 th, industrial - food products from 11 - 14 th, provider of 14-16.-og, and the prices of agricultural products 15-21-th of the month.

Average monthly prices for the city for all products and services are calculated by non-weight geometric mean, while the average monthly prices for Montenegro calculated based on average price in the four cities that

cijene za Crnu Goru računaju na bazi prosječnih cijena iz četiri grada koje se ponderišu strukturom potrošnje domaćinstava.

Prosječne godišnje potrošačke cijene predstavljaju neponderisani prosjek cijena za dvanaest mjeseci.

Početkom svake godine vrši se korektura pondera na bazi rasta potrošačkih cijena. Indeksi potrošačkih cijena preračunavaju se početkom svake godine na prethodnu godinu kao bazu.

ŠUMARSTVO

Izvori podataka i obuhvatnost

Podaci se prikupljaju mjesečnim izvještajem ŠUM-22. Ovim izvještajem obuhvaćena su šumarska i druga preduzeća koja u državnim šumama vrše proizvodnju šumskih sortimenata, bez obzira da li im je proizvodnja šumskih sortimenata osnovna djelatnost ili nije.

Definicije

Indeks fizičkog obima iskorišćavanja šuma obračunava se na osnovu podataka o proizvodnji šumskih sortimenata, prema nomenklaturi proizvoda i ponderacionih koeficijenata. Količine predstavljaju neto drvenu masu sortimenata izraženu u kubnim metrima. Za izračunavanje indeksa proizvodnje šumskih sortimenata kao koeficijenti ponderacije koriste se prosječne prodajne cijene proizvoda.

INDUSTRIJA

Izvori podataka

Prikazani podaci prikupljaju se mjesečnim izvještajima industrije na obrascu IND-1.

Obuhvatnost

Mjesečnim izvještajem industrije obuhvataju se sva preduzeća kao i njihovi djelovi koji obavljaju industrijsku djelatnost, odnosno koji su prema Klasifikaciji djelatnosti razvrstani u sektore: Vadenje rude i kamena, Preradivačka industrija i Proizvodnja i snabdijevanje električnom energijom, gasom i vodom. Preduzeća neindustrijskih djelatnosti su izvještajne jedinice ako u svom sastavu imaju jedinicu koja se bavi industrijskom djelatnošću.

Nomenklatura

Proizvodnja se iskazuje prema Nomenklaturi industrijskih proizvoda, koju čine industrijski proizvodi i usluge razvrstane po djelatnostima u kojima su proizvedeni.

Indeksi

Indeks fizičkog obima industrijske proizvodnje formiran je na osnovu podataka o količinama proizvoda i ponderacionog sistema. Podaci o količinama daju se prema Nomenklaturi proizvoda i sirovina.

weighted by structure of household consumption.

Average annual consumer prices represent the average non-weight average prices for twelve months.

Beginning of each year is done proofreading weights on the basis of consumer price growth. Consumer price converted at the beginning of each year to the previous year as a base.

FORESTRY

Data sources and coverage

The data are collected on the basis of the monthly survey ŠUM-22. This report covers forestry and other enterprises dealing with production of forest assortments in state forests, disregarding if forest assortments production is their basic activity or not.

Definitions

The physical volume index of forests exploitation is calculated on the basis of data on the production of forest assortments, according to the present nomenclature of products and weights coefficients. Quantities represent net wood mass of assortments expressed in cubic meters. In order to calculate the index of forest assortments production, average purchase prices are used as weighting coefficients.

INDUSTRY

Sources of data

The shown data are collected by monthly surveys (through the questionnaire IND-1).

Coverage

Monthly industry survey includes all enterprises, as well as their parts, performing the industrial activity, i.e. those that are according to the Classification of Activities classified into the following sectors: Mining and quarrying, Manufacturing, Electricity, gas, and water supply. Enterprises of non-industrial activities represent reporting units if they have in their structure a unit dealing with industrial production.

Nomenclature

The production is presented according to the Nomenclature of industrial products, including industrial products and services structured according to the activities in which they were produced.

Indices

Index of physical scope of industrial production is formed on the basis of data on product quantities and weighting system.

The data are provided according to the Nomenclature of products and raw materials. In the calculation of the index of physical scope of industrial

Za obračun indeksa fizičkog obima industrijske proizvodnje ponderi izražavaju prosječnu dodatnu vrijednost po jedinici proizvoda.

production, the weights express the average value added per product unit.

GRAĐEVINARSTVO

Izvor podataka i obuhvat

Prikazani podaci prikupljaju se tromjesečnim izvještajem građevinarstva GRAĐ-31, kojim su obuhvaćena preduzeća iz oblasti građevinarstva, kao i jedinice koje obavljaju građevinsku djelatnost a nalaze se u sastavu negrađevinskih preduzeća. Podaci se prikupljaju od preduzeća iz Crne Gore kao i poslovnih jedinica stranih preduzeća koja obavljaju građevinsku djelatnost u Crnoj Gori.

Definicije

Vrijednost izvršenih građevinskih radova izražena je u tekućim cijenama i obuhvata sav ugrađeni građevinski materijal i utrošeni rad. Podaci o vrijednosti izvršenih građevinskih radova daju se na osnovu privremenih situacija koje ispostavljaju izvođači radova. U vrijednost nisu uključeni troškovi nabavke zemljišta, projektovanja, nadzora i PDV-a. Podaci o vrijednosti izvedenih radova odnose se na radove izvedene u izvještajnom periodu na završenim i nezavršenim građevinama.

Broj radnika – Obuhvata sve radnike koji na gradilištima obavljaju građevinske, instalaterske i završne radove, bez obzira na kvalifikaciju, vrstu radnog odnosa (ugovor o radu, ugovor o djelu, iznajmljeni radnici itd.) i dužinu rada na gradilištima. Nijesu uključeni zaposleni koji rade na inženjersko-tehničkim, administrativnim i rukovodećim poslovima.

Izvršeni efektivni časovi rada - Obuhvataju stvarno odrađene časove radnika angažovanih na gradilištima u redovnom radnom vremenu kao i u prekovremenim satima.

Nove narudžbe – Predstavljaju ukupnu vrijednost ugovorenih radova između proizvođača i treće strane na osnovu zaključenog ugovora.

SPOLJNA TRGOVINA

Izvori i metodi prikupljanja podataka

Izvor podataka za statistiku spoljne trovine je Jedinstvena Carinska Isprava o izvozu i uvozu robe, koju prilikom carinjenja robe, u ime preduzeća, podnose carinarnicama špediterska preduzeća koja imaju dispoziciju carinskog obveznika.

Obuhvatnost

Pri izvozu obuhvata se sva roba koja potiče iz domaće odnosno proizvodnje iz unutrašnjeg robnog prometa uključujući i tzv. nacionalizovanu robu (roba koja je bila uvezena i ocarinjena, pa se u nepromijenjenom ili

CONSTRUCTION

Source of data and coverage

Presented data are collected through a quarterly survey in construction GRAĐ-31, which include enterprises in construction, as well as units performing the activity in construction and are within non-construction enterprises. Data are collected from enterprises from Montenegro as well as the business units of foreign enterprises performing construction activity in Montenegro.

Definitions

Value of finalized construction works is given at current prices and includes all built material and performed work. Data about the value of finalized construction works is given on the basis of temporary situations given by contractors. The value does not include costs of buying the land, engineering, monitoring and VAT. The data on value of finalized work refer to works performed in the reporting period on finished and non-finished construction sites.

Number of workers – Includes all workers who at the construction site perform the construction, installation and final works, no matter to qualification, the type of working contract (contract on work, contract on task, rented workers, etc.) and the duration of work at the construction site. It does not include employees working on engineering-technical, administrative and managerial positions.

Effective working hours – include really performed working hours of workers engaged in the regular working hours, as well as overtime work.

New orders – present the total value of contracted works between producer and third party based on the concluded report.

EXTERNAL TRADE

Sources and methods of data collection

Data source for external trade statistics is Single Administrative Document on import and export of goods, submitted, on behalf of enterprises, by shipping agents having the disposition of Custom tributary.

Coverage

Export covers all goods of domestic i.e. internal production origin, including so-called nationalized merchandise, (imported goods cleared through the customs, and unchanged exported as goods of Montenegro origin). Import covers all merchandise im-

dorađenom stanju izvozi kao roba porijekla iz Crne Gore na strano tržište). Uvoz obuhvata svu robu uvezenu iz inostranstva koja je ocarinjena i puštena u unutrašnji promet u cilju reprodukcije, investicija ili široke potrošnje.

Uključene su i isporuke raznih dobrotvornih organizacija i privatne poklon pošiljke.

Od januara 2008. god. MONSTAT je u skladu, sa preporukama UN-a i EUROSTAT-a primijenio opšti i specijalni trgovinski sistem.

MONSTAT je do sada koristio ublaženu definiciju specijalnog sistema trgovine. Svjesni ograničenja ublažene definicije specijalnog sistema trgovine, u rezultate spoljnotrgovinske razmjene uključen je i ponovni izvoz robe iz carinskih skladišta i slobodnih carinskih zona koji se registruje po opštem sistemu trgovine.

Opšti sistem trgovine koristi se u slučajevima kada se statistička teritorija zemlje poklapa s njenom ekonomskom teritorijom. Prema tome, opšti sistem trgovine predstavlja širi koncept i kod uvoza obuhvata svu robu koja ulazi na ekonomsku teritoriju zemlje koja prikuplja podatke, sa izuzetkom robe koja je u tranzitu, a kad izvoza obuhvata svu robu koja napušta ekonomsku teritoriju zemlje koja prikuplja podatke, sa izuzetkom robe koja je u tranzitu.

Sistem specijalne trgovine predstavlja užu koncept i koristi se u slučajevima kada se statistička teritorija zemlje poklapa samo sa određenim dijelom njene ekonomske teritorije. Stroga definicija specijalnog sistema trgovine koristi se kada statistička teritorija obuhvata samo slobodno cirkulirajuće područje u okviru koga roba može biti raspoloživa bez carinskih ograničenja, to znači da je ona prošla carinski postupak i da se koristi za domaću upotrebu u cilju reprodukcije, široke potrošnje i investicije.

Izvoz obuhvata svu robu koja napušta slobodno cirkulirajuće područje zemlje koja prikuplja podatke.

Definicije

Vrijednost robe u spoljnoj trgovini iskazana je na osnovu cijena koje su postigla preduzeća prilikom sklapanja ugovora. Sve vrijednosti obračunate su na bazi pariteta franko granice Crne Gore: FOB-cijene za izvoz, CIF-cijene za uvoz.

Statistička vrijednost robe koja se izvozi jeste fakturna vrijednost robe. Statistička vrijednost robe koja se uvozi jeste vrijednost koja predstavlja carinsku osnovicu. Podaci o vrijednosti su obračunati po tekućim kursovima koji se primjenjuju za utvrđivanje carinske osnovice. Po tekućim kursovima koji se primjenjuju za utvrđivanje carinske osnovice takođe je izvršen obračun troškova transporta, osiguranja, pretovara i sl. koji se plaćaju u stranoj valuti.

Registracija podataka spoljne trgovine po zemljama vrši se po principu zemlje namjene kod izvoza i zemlje

ported, cleared through the customs, and put on domestic market for reproduction, investment or consumption purposes.

Deliveries of various charity organizations and private gifts are also included.

Due to the recommendations of UN and EUROSTAT, MONSTAT has since January 2008 applied the general and special trade systems.

So far MONSTAT was using the reduced definition of the special trade system. Being aware of the limitations of the reduced definition of special trade system, the results of external trade include the re-export of goods from customs warehouses and free customs zones which is registered according to general trade system.

General trade system is used in cases when the statistical territory matches with its economic territory. Accordingly, the general trade system presents the wider concept and in import it includes all goods coming in the economic territory of the country which collects data, with the exception of goods in transit, and in export it includes all goods leaving the economic territory of the country which collects data, with the exception of goods in transit.

Special trade system presents the narrow concept and is used in cases when the statistical territory of the country matches only with the certain part of its economic territory. The strict definition of the special trade system is used when the statistical territory includes only the free circulating area in which the goods can be available without the customs limitations, which means that it went through the customs procedure and that it is used for domestic use for the purpose of reproduction, wider consumption and investments.

The export includes all goods which leaves the free circulating area of the country which collects the data.

Definitions

Value of goods in external trade statistics is shown on the basis of prices fixed by organizations and enterprises by contractual stipulation. All values have been calculated on the basis of parity free on Montenegrin border, i.e. F.O.B. export prices and C.I.F. import prices.

Statistical value of goods being exported is the invoice value of goods. Statistical value of goods being imported is the value representing customs base. Data on values are calculated on the basis of exchange rates applied for establishing customs base. Costs of transport, insurance and reloading, etc. paid in foreign currency are calculated at current exchange rates applied for establishing customs base.

Registration of external trade data by country is carried out according to principle of destination country for the export and origin country for the import. It means that, in case of export, the country in which goods are consumed or further processed is registered, and in case

porijekla kod uvoza. To znači da se pri izvozu registruje zemlja u kojoj se roba troši i dalje prerađuje, a pri uvozu ona zemlja u kojoj je roba proizvodnjom dovedena u stanje u kome se uvozi

UNUTRAŠNJA TRGOVINA

Izvori podataka

Podaci o unutrašnjoj trgovini preduzeća koja se bave trgovinom na malo, prikupljaju se redovnim mjesečnim istraživanjem. Istraživanje je na bazi uzorka i obuhvaćena su preduzeća koja su u Registru jedinica razvrstavanja prema klasifikaciji djelatnosti razvrstana u sektor trgovine.

Podaci o prodaji i otkupu proizvoda poljoprivrede, šumarstva i ribarstva prikupljaju se mjesečnim izvještajima o realizaciji poljoprivrednih proizvoda sopstvene proizvodnje poljoprivrednih preduzeća i zemljoradničkih zadruga i mjesečnim izvještajem o otkupu poljoprivrednih proizvoda od individualnih gazdinstava.

Obuhvatnost

Statistika unutrašnje trgovine obuhvata i prikazuje promet preduzeća čija je osnovna djelatnost trgovina na malo.

Mjesečnim izvještajima o prodaji i otkupu proizvoda poljoprivrede, šumarstva i ribarstva obuhvaćena su poljoprivredna preduzeća, zemljoradničke zadruge kao i druga preduzeća koja su ovlašćena da vrše otkup proizvoda od individualnih gazdinstava u cilju dalje prerade ili prodaje.

Definicije

Promet robe u trgovini na malo predstavlja vrijednost prodate robe preduzeća na malo koja je prodana krajnjim potrošačima, odnosno stanovništvu za ličnu potrošnju i upotrebu u domaćinstvu, kao i pravnim i fizičkim licima za obavljanje djelatnosti.

Podaci o prodaji i otkupu proizvoda poljoprivrede, šumarstva i ribarstva obuhvataju vrijednost prodaje proizvoda iz sopstvene proizvodnje preduzeća i zadruga kao i otkup vrijednosti proizvoda od individualnih gazdinstava, koje vrše zato ovlašćene organizacije u cilju dalje prerade ili prodaje.

UGOSTITELJSTVO

Izvori podataka i obuhvatnost

Podaci o ostvarenom prometu u ugostiteljstvu po mjesecima, se procjenjuje na osnovu ocjene trenda prometa, dok se ne dobiju rezultati redovnog tromjesečnog istraživanja, ugostiteljstva. Mjesečne procjene se korijugu na osnovu dobijenih rezultata.

of import – the country where the goods have been produced in the condition in which they have been imported.

INTERNAL TRADE

Sources of data

Data of internal trade of enterprises dealing with retail trade are collected through regular monthly survey. The survey is sample based and includes all enterprises which are in the Administrative register classified in the sector Trade.

Data about sales and buy out of products in agriculture, forestry and fishery are collected through monthly reports on realization of agricultural products of own production of agricultural enterprises and cooperatives and through monthly report on buying out of agricultural products from individual holdings.

Coverage

Statistics of internal trade covers and presents the turnover of enterprises whose primary activity is retail trade.

Monthly survey on sales and buying out of products in agriculture, forestry and fishing covers agricultural enterprises, agricultural cooperatives, as well as other enterprises authorized to do the buying out of products from individual holdings for future processing or sale.

Definitions

Turnover of goods in retail trade is the retail value of goods of an enterprise sold to final users, i.e., the population for personal consumption and use in household, as well as to private and physical persons for performing the activity.

Data on sales and buying out of products in agriculture, forestry and fishing cover the value of sale of products from own production of enterprises and cooperatives as well as the buying out of value of products from individual holdings, performed by authorized agencies for further processing or sale.

CATERING

Sources of data and coverage

Data on realized turnover in catering by month are estimated on the basis of estimate of trend of turnover, until the results of the regular quarterly survey in catering are received. Monthly estimates are corrected on the basis of received results.

Podaci o prometu u ugostiteljstvu prikupljaju se tromjesečnom izvještajnom službom za ugostiteljska preduzeća, po grupama usluga. Godišnjom izvještajnom službom prate se ugostiteljska preduzeća i preduzetnici. Mjesečni podaci ne obuhvataju promet preduzetnika.

Definicije

Prikazani promet u ugostiteljstvu predstavlja vrijednost izvršenih ugostiteljskih usluga koje obuhvataju usluge smještaja, ishrane, točenja pića, kao i druge usluge koje se uobičajeno obavljaju u ugostiteljstvu.

TURIZAM

Izvori podataka i obuhvatnost

Podaci o broju dolazaka turista i noćenja prikupljeni su redovnim mjesečnim izvještajem (obrazac TU-11). Izvještaji se sastavljaju na osnovi evidencija u knjigama gostiju. Istraživanje se sprovodi na bazi potpunog obuhvata.

Definicije

Izvještajne jedinice jesu svi poslovni subjekti (preduzeća/trgovačka društva, zadruge, ustanove, itd.) i njihovi dijelovi koji obavljaju djelatnost pružanja usluga smještaja turistima; zdravstvene ustanove za svoje objekte u kojima osobe borave radi medicinske rehabilitacije (osobe same snose naknadu za taj boravak); poslovni subjekti i njihovi dijelovi koji se bave posredovanjem u pružanju smještajnih usluga (putničke agencije); poslovni subjekti koji se bave posredovanjem u smještaju gostiju u seoskim kućanstvima; turističke zajednice i druga nadležna tijela za privatne sobe, apartmane ili kuće koje neposredno iznajmljuju turistima; poslovni subjekti i njihovi dijelovi za svoja odmarališta; poslovni subjekti koji su osnovali ili vode brigu i nadzor nad planinarskim domovima; vojne ustanove za svoje ugostiteljske objekte za smještaj gostiju; poslovni subjekti koji se za vrijeme školskih praznika koriste školama, domovima i sličnim objektima kao privremenim smještajnim kapacitetima; Istraživanjem su obuhvaćene sve pravne osobe i njihovi dijelovi te fizičke osobe koje iznajmljuju smještajne objekte turistima (komercijalni objekti).

Turist je svaka osoba koja u mjestu van svog prebivališta provede najmanje jednu noć u ugostiteljskom ili drugom objektu za smještaj turista radi odmora ili rekreacije, zdravlja, studija, sporta, religije, porodice, poslova, javnih misija ili skupova.

U turiste se ne uključuju migranti, pogranični radnici, diplomati, članovi vojnih snaga na redovnim zadacima, izbjeglice, itd.

Prebivalište je mjesto u kojem se osoba nastanila s namjerom da u njemu stalno živi. Turist je registrovan u

Data on turnover in catering are collected through quarterly survey survey for enterprises in catering, by groups of services. The annual survey collects data on enterprises in catering and entrepreneurs. Monthly data do not include turnover of entrepreneurs.

Definitions

Presented turnover in catering presents the value of performed catering services including the services of accomodation, food, pouring beverages, as well as other services usually performed in catering.

TOURISM

Sources of data and coverage

Data about arrivals of tourists and overnight stays are collected through regular monthly survey (form TU-11). The reports are compiled on the basis of records in the guest books. The survey is conducted on the basis of full coverage.

Definitions

Reporting units are all business subjects (enterprises/trade companies, cooperatives, institutions, etc.) and their parts performing activity of providing accommodation services to tourists; health institutions for their objects attended by persons for medical rehabilitation (persons pay by themselves for the stay); business subjects and their parts dealing with intermediation in providing accommodation services (travel agencies); business subjects dealing with intermediation in accomodatin of guests in village houses; touris unions and other competent bodies for private rooms, apartmans or houses directly rented by tourists; business subjects and their parts for their resorts; business subjects which founded or take care an monitor the mountain lodgings; military institutions for their catering objects for accomodation of guests; business subjects which are during school holidays used by schools, hostels and similar objects as temporary placing capacities. The survey covers all legal persons and their parts as well as persons renting accommodation to tourists (commercial objects).

Tourist is a person who spends at least one night in an accommodation facility or some other object for accommodation of tourists, in a place other than his/her place of permanent residence for the reason of vacation or recreation, health, studies, sports, religion, family, business, public missions or meetings. Tourists do not include migrants, border workers, diplomats, members of military force in the regular duty, refugees, etc.

Residence is the place where the person is settled intending to permanently live in it. Tourist is registered in a place or object wher it resides and due to it, in the case of change of place or object, the double reporting may

svakom mjestu ili objektu u kojem boravi i zbog toga, u slučaju promjene mjesta ili objekta, dolazi do njegova ponovnog iskazivanja, a time i do dvostrukosti u podacima. Prema tome, statistika evidentira broj dolazaka turista, a ne broj turista.

SAOBRAĆAJ, SKLADIŠTENJE I VEZE

Podaci o prevozu putnika i robe u unutrašnjem, pomorskom, vazdušnom i drumskom saobraćaju odnose se na prevoz koji obavljaju saobraćajna preduzeća registrovana u saobraćajnoj djelatnosti, bez obzira da li prevoz obavljaju unutar ili van granica naše zemlje za račun domaćeg ili inostranog korisnika.

Podaci se prikupljaju redovnim mjesečnim i godišnjim statističkim izvještajima saobraćajnih preduzeća.

Željeznički saobraćaj

Prevezeni putnici u unutrašnjem saobraćaju obuhvataju otputovala putnike, otputovala putnike u inostranstvo, prispjele iz inostranstva i putnike u tranzitu. Prevezeni teret obuhvata utovarenu robu u unutrašnjem i u međunarodnom saobraćaju: uvoz, izvoz i tranzit.

Promet na aerodromima

Podaci o prometu putnika i robe na aerodromima dobijeni su na osnovu redovnih mjesečnih i godišnjih izvještaja preduzeća za aerodromske usluge i obuhvataju kompletan promet, odnosno i domaće i strane avione.

Drumski saobraćaj

Podaci o prevozu odnose se na rad domaćih preduzeća drumskog saobraćaja u unutrašnjem i međunarodnom prevozu putnika i tereta.

Gradski saobraćaj

Obuhvaćen je prevoz putnika koji obavljaju saobraćajne organizacije u gradskom i prigradskom saobraćaju

Poštanski saobraćaj

Poštanski saobraćaj obuhvata: Poštanske usluge, telegrafске i telefonske usluge. Poštanske aktivnosti obuhvataju sljedeće usluge: prenos pismonosnih i paketnih pošiljki i usluge platnog prometa.

Pismonosne pošiljke odnose se na otpremljena pisma, dopisnice, novine i časopise, preporuke i vrijednosna pisma u unutrašnjem prometu, a u međunarodnom prometu i u prispjjeću. Tranzit nije obuhvaćen.

Platni promet obuhvata uplate poštanskim uputnicama, po žiro i tekućim računima i računskim knjižicama, isplate međunarodnim poštanskim uputnicama i žiro i tekućim računima i računskim i invalidskim knjižicama.

Telegrafске usluge obuhvataju otpremu telegrama u unutrašnjem prometu i prometu sa inostranstvom, uključujući i tranzit.

appear, which may lead to the double data. There the statistis records the arrivals of tourists, adn not the number of tourists.

TRANSPORT, STORAGE AND COMMUNICATIONS

Data on the transport of passengers and goods in the internal, marine, air and road transport refer to the transport performed by transport enterprises registered in transport activities, no matter whether the transport is done inside or outside the borders of our country on the account of domestic or foreign user.

Data are collected through regular monthly or annual statistical surveys from reports of transport enterprises.

Railway transport

Passengers transported in domestic transport include departed passengers, passengers departed abroad, passengers who arrived from abroad and passengers in transit. Transported cargo includes loaded goods in domestic and international transport:import, export and transit.

Traffic in airports

Data about traffic of passengers and goods in airports are received on the basis of regular monthly and annual reports of enteprises for airport services and they cover complete traffic, i.e., both domestic adn foreign airplanes.

Road transport

Data about transport refer to the work of domestic enterprises of road transport in internal and international pransport of passengers adn cargo.

Local transport

It includes the transport of passengers performed by transport organizations in local and commuter services.

Postal communications

Postal communications include: Postal services, telegraphic and telephone services. Postal activities include the following services: transport of letter mail and services of ballance of payments.

Letter mail refer to only to mail sent, postal cards, newspaper and magazines, registered and value letters in domestic transport, as well as for the receiving in the international communications. The transit is not included.

Balance of payment includes payments made by postal money orders, by giro and current accounts and account booklets, payments by international postal money orders and giro and current accounts and account and disability booklets.

Telegraph services refer to sending of telegrams in the country as well as to foreign countries, including the transit.

Telefonske usluge obuhvataju fiksnu i mobilnu mrežu i prikazuju se u onim jedinicama koje se i koriste u tehničkom smislu-minutima.

MONETARNI AGREGATI

Izvori podataka

Za izradu monetarne statistike su: bilansi Centralne banke Crne Gore i bilansi banaka. Banke dostavljaju podatke u skladu sa Odlukom o izvještajima koje banke dostavljaju Centralnoj banci Crne Gore.

Za prikupljanje i obradu podataka monetarne statistike nadležna je Centralna banka Crne Gore.

Definicije

Monetarnu bazu (M0) čine depoziti banaka kod CBCG (obračunski račun banaka i izdvojena obavezna rezerva - do januara 2008. bez dijela koji banke drže u državnim zapisima) i procijenjeni iznos gotovog novca u opticaju.

Monetarni agregat (M1) čine M0, depoziti po viđenju nebankarskog sektora kod banaka i CBCG, u eurima i drugim valutama, isključujući depozite centralne Vlade.

Monetarni agregat (M11) čini M11 uvećan za depozite centralne Vlade po viđenju, u eurima i drugim valutama.

Monetarni agregat (M2) čine M1 i oročeni depoziti nebankarskog sektora kod banaka i CBCG, u eurima i drugim valutama, isključujući depozite centralne Vlade.

Monetarni agregat (M21) čini M11 uvećan za oročene depozite (uključujući depozite centralne Vlade), u eurima i drugim valutama.

Depoziti stanovništva – u tabeli je prikazano stanje ukupnih depozita fizičkih lica kod banaka na kraju perioda i njihova struktura po ročnosti.

PLATNI BILANS CRNE GORE

Bilans plaćanja sastavlja se u skladu sa metodologijom koju je preporučio Međunarodni monetarni fond (Balance of payments Manual, fifth edition, 1993). Izvori podataka su: Republička uprava carina Crne Gore, MONSTAT, Elektroprivreda Crne Gore, Ministarstvo finansija, poslovne banke i CBCG. Bilans plaćanja se iskazuje u eurima. Preračunavanje vrijednosti transakcija iz originalnih valuta u izvještajnu valutu obavlja se: primjenom srednjih kurseva CBCG na dan transakcije, primjenom mjesečnih i godišnjih srednjih prosječnih kurseva CBCG, primjenom srednjeg dnevnog kursa na kraju perioda kod procjene transakcija čija se razlika stanja prati.

Početkom 2005. godine izvršena je revizija podataka koji se odnose na 2004. godinu. Naime, tokom 2004. godine postalo je tehnički moguće pratiti robne transakcije između Crne Gore i Srbije na osnovu podataka Republičke uprave carina Crne Gore, odnosno carinskih deklaracija. Do 2004. godine izvor za praćenje ovih tokova su bili jedino podaci poslovnih banaka o ostvarenom platnom prometu sa inostranstvom, odnosno ITRS.

Telephone services include fixed and mobile networks and are presented in the units used in the technical sense -minutes.

MONETARY AGGREGATS

The sources of data

For preparation of monetary statistics are: the balance sheets of the Central Bank of Montenegro and of banks. Banks submit their data according to the Decision on reports that banks submit to the Central Bank of Montenegro.

The Central Bank of Montenegro is responsible for the collection and processing of the data of monetary statistics.

Definitions

Monetary base (M0) comprises banks' deposits in the CBM -Payment Operations (banks' giro accounts and allocated reserve requirement until January 2008, excluding the part which banks keep as treasury bills) and the estimated amount of cash in circulation.

Monetary aggregate (M1) comprises M0, demand deposits by the non-banking sector with banks and the CBM, in EUR and other currencies, excluding deposits of the central Government.

Monetary aggregate (M11) comprises M1 plus the central Government's demand deposits in EUR and other currencies.

Monetary aggregate (M2) includes M1 and non-banking sector's time deposits with banks and CBM, in EUR and other currencies, excluding deposits of the central Government.

Monetary aggregate (M21) comprises M11 plus the central Government's time deposits in EUR and other currencies.

Deposits by households – the table present the balance of total deposits of individuals by households at the end of period and their structure by time.

THE BALANCE OF PAYMENT OF MONTENEGRO

The balance of payments is prepared according to the methodology prescribed by the International Monetary Fund (Balance of Payment, 1993). The sources of data are: Custom Administration of Montenegro, MONSTAT, Montenegrin Electric Enterprise, the Ministry of Finance, commercial banks, and the Central Bank of Montenegro. The balance of payments is presented in EUR. Recalculation of the transaction values from the original currency to the reporting currency is performed by: using the mean exchange rate from the Central Bank of Montenegro and at the end of the period with evaluation transactions whose change is monitored using daily mean exchange rate.

The revision of data referring to 2004 was done in the beginning of 2005. Namely, it was technically possible in 2004 to follow transaction of goods between Montenegro and Serbia on the basis of data from Customs Administration of Montenegro i.e., the customs declarations. Until 2004 the source for viewing these currents was only data of banks about the achieved balance of payments with foreign countries, i.e., ITRS.

Izvor podataka o spoljnoj trgovini od 2005. godine je MONSTAT. U 2008. godini izvršena je revizija podataka o spoljnoj trgovini za 2007. godinu u skladu sa promjenom metodologije koju koristi MONSTAT. Podaci o spoljnoj trgovini u platnom bilansu Crne Gore za 2007. i 2008. godinu prikazani su po opštem sistemu trgovine. CBCG vrši prilagođavanje podataka dobijenih od MONSTAT-a za potrebe platnog bilansa u skladu sa metodologijom MMF-a (Balance of Payments Manual, Fifth edition, IMF, 1993).

Kod evidencije transportnih usluga koriste se podaci banaka o ostvarenom platnom prometu sa inostranstvom. Prihodi od **putovanja** obuhvataju procijenjene prihode od turizma, koji se dopunjavaju sa podacima o pruženim zdravstveno-rekreativnim uslugama i potrošnjom u cilju školovanja. Do prihoda od turizma se dolazi na osnovu broja noćenja (podatak MONSTAT-a) i procijenjene prosječne dnev-ne potrošnje. Početkom 2006. godine korigovan je model za procjenu prihoda od turizma, korekcija se odnosi na 2003. i 2004. godinu. Podaci o rashodima za turizam dobijaju se na osnovu ostvarenog platnog prometa sa inostranstvom.

Finansijske usluge (usluge osiguranje i reosiguranja, zastupnička i posrednička provizija i provizija i troškovi u bankarskom poslovanju) se prate na osnovu statistike platnog prometa sa inostranstvom. Ostale usluge obuhvataju građevinske usluge, ptt i komunikacijske usluge, usluge osiguranja, kompjuterske i informacione usluge, autorska prava i honorare od izdavanja dozvola i ostale poslovne usluge. Podaci o njima se dobijaju iz statistike platnog prometa sa inostranstvom, a na osnovu izvještaja banaka.

Račun dohotka uključuje podatke iz statistike platnog prometa sa inostranstvom o kompenzacijama, zaposlenima, plaćanjima i naplatama po osnovu kamata, plaćenim i naplaćenim dividendama. Izvor podataka su izvještaji banaka i CBCG.

Tekući transferi obuhvataju podatke o transferima sektora vlade i ostalih sektora koji se dobijaju iz statistike platnog prometa sa inostranstvom.

Direktne i portfolio investicije prate se na osnovu podataka statistike platnog prometa sa inostranstvom i sprovedenih anketa. Ostale investicije koje obuhvataju podatke o kreditima, trgovinskim kreditima, gotovini i depozitima se dobijaju iz statistike platnog prometa sa inostranstvom.

Rezerve Centralne banke Crne Gore obuhvataju sredstva komercijalnih banaka deponovana kod ino banaka, sredstva Centralne banke deponovana kod ino banaka, sredstva u trezoru CBCG i rezervne pozicije kod MMF-a. Izvor podataka je CBCG (monetarna statistika).

Since 2005, the source of data about external trade is MONSTAT. In 2008. accomplished revision data from external trade for 2007 with methodology which use MONSTAT. CBM makes adjustments of data received from MONSTAT in order to harmonize them with the IMF methodology (Balance of Payments Manual, Fifth edition, IMF, 1993).

The registering of transportation services uses banks' data on performed international payment operations.

*Incomes from **travelling** include estimated incomes from tourism, which are supplemented by data on provided health- recreation services and expenditures for education. Data on expenditures in tourism are obtained on the basis of the number of tourist overnight stays (data from MONSTAT) and estimated average daily consumption.*

The model for estimation of incomes from tourism was modified in the beginning of 2006, and the correction refers to 2003 and 2004. Data on expenditures in tourism are obtained on the basis of international payment operations.

Financial services (insurance and reinsurance, representative and mediation commission fees, and commission fees and expenses for banking operations) are covered on the basis of foreign payment operations statistics. Other services include investment work in foreign countries, PTT and communication services, forwarding services, expenses for the maintenance of representative offices, computer and information technology services, author's fee, and fee for license issuance, as well as other business services. The data is obtained from foreign payment operations statistics and banks' reports.

Income statement comprises data from foreign payment operations statistics on compensations to employees, payments, and charged dividends. The source of data is banks' reports.

Current transfers include data about transfers of Government sector and other sectors received from balance of payment with foreign countries.

Direct and portfolio investments are followed on the basis of data of international payment operations statistics and conducted surveys. Other investments include data about loans, trade loans, cash and deposits and are obtained from the balance of payment statistics with foreign countries.

The Central Bank of Montenegro's reserves comprise commercial banks' fund deposited in international bank and the CBM funds deposited in foreign banks, funds in the CBM treasury and reserve positions in IMF. The source of data is CBM (monetary statistics).

REDAKCIJA / EDITORIAL BOARD :

RAJKO LAKOVIĆ, rukovodilac / coordinator
Mr.Gordana Radojević, Gojko Dragaš,
Branka Šušić – Radovanović,
Snežana Remiković

Tehnički urednik / *Editor* : Radmila Šišević
Grafički prikazi / *Graphs* : Radmila Šišević
Prevod / *Translated by*: Irena Mihailović

IZDAJE I ŠTAMPA: Zavod za statistiku Crne Gore – MONSTAT, Podgorica, IV Proleterske br. 2
Prilikom korišćenja navesti izvor – preporučuje se skraćenica – MSP, br.- /2008

ODGOVARA: Radomir Đurović, direktor.

Izlazi 25-og u mjesecu. Tiraž 150 primjeraka. Prodajno odjeljenje: Tel: +382 20 230-773

PUBLISHED AND PRINTED BY: Statistical Office of Montenegro – MONSTAT, Podgorica, IV Proleterske no. 2

Data using is subject to quoting source – abbreviation recommended: MSR, no. -/2008

RESPONSIBLE: Radomir Đurović, Director.

Issued on 25th in a month. Circulation 150 copies. Department of sales: +382 20 230-773

E-mail: contact@monstat.org Web Site: www.monstat.org