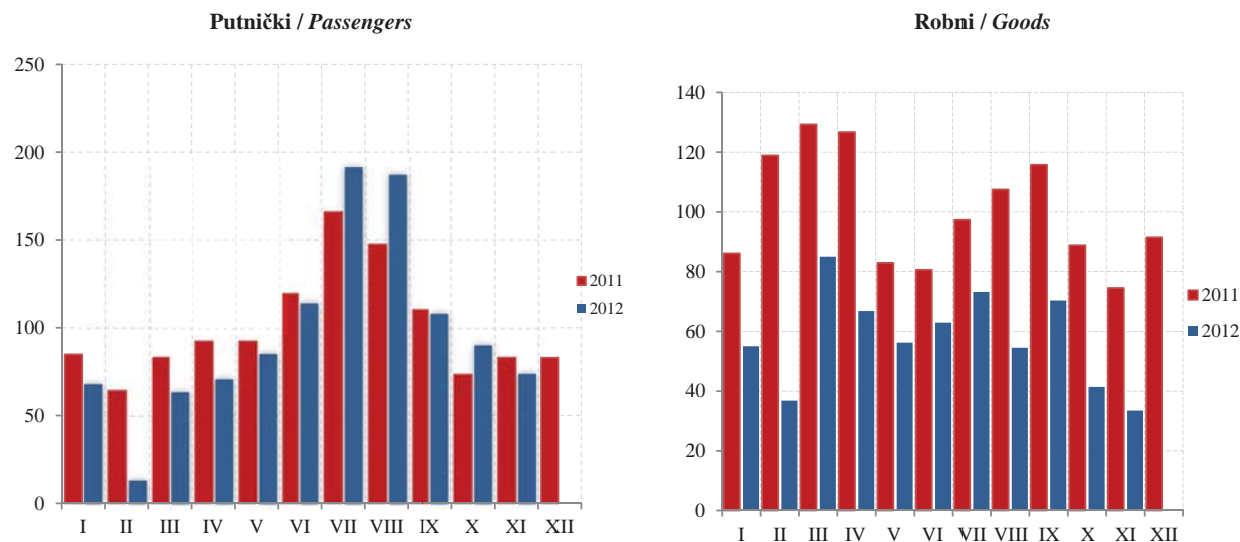


SAOBRAĆAJ, SKLADIŠTENJE I VEZE
TRANSPORT, STORAGE AND COMMUNICATIONS

Željeznički saobraćaj / Railway transport

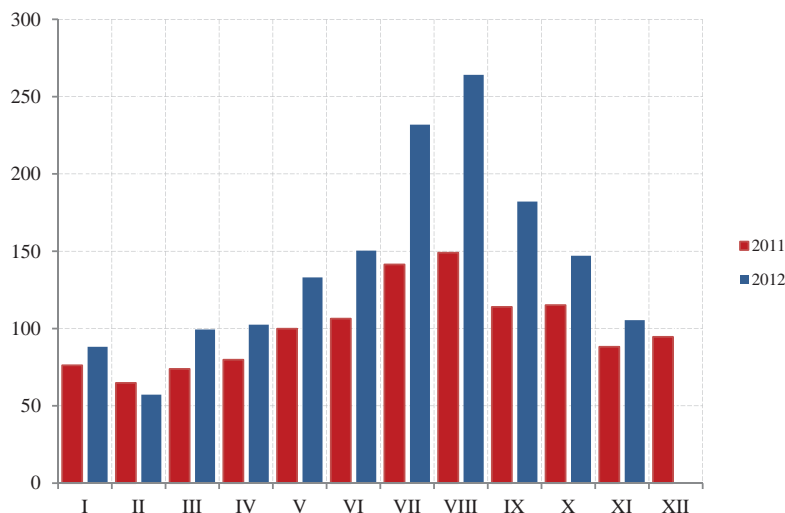
Ø 2011 = 100



| | ŽELJEZNIČKI SAOBRAĆAJ / RAILWAY TRANSPORT | | | | | |
|--------------------------------|---|---|--|-----------------|--|---|
| | Putnički / Passenger | | | Robni / Goods | | |
| | indeks Index | putnici u 000 Passengers, thousands | putnički km u 000 Passenger kilometres in thousands | Indeks Index | prevoz robe u 000 t Goods in thousands tonnes | tonski km u 000 Tonne-kilometres in thousands |
| 2007 | 169,0 | 999 | 110 000 | 136,5 | 1 761 | 184 957 |
| 2008 | 192,0 | 1031 | 125 000 | 135,7 | 1 740 | 183 854 |
| 2009 | 152,4 | 852 | 99 200 | 74,2 | 854 | 100 546 |
| 2010 | 139,3 | 755 | 90 660 | 111,2 | 1 213 | 150 699 |
| 2011 | 100,0 | 692 | 65 100 | 100,0 | 1 050 | 135 522 |
| Ø I - XI 2011 | 101,6 | 58 | 5 509 | 100,8 | 88 | 11 381 |
| Ø I - XI 2012 | 96,8 | 66 | 5 252 | 55,4 | 57 | 6 259 |
| 2011 | | | | | | |
| XI | 82,9 | 50 | 4 500 | 74,5 | 69 | 8 409 |
| XII | 82,9 | 50 | 4 500 | 91,5 | 81 | 10 330 |
| 2012 | | | | | | |
| I | 68,2 | 53 | 3 700 | 55,0 | 55 | 6 212 |
| II | 13,4 | 34 | 729 | 36,8 | 38 | 4 153 |
| III | 63,3 | 47 | 3 432 | 59,0 | 61 | 6 668 |
| IV | 70,6 | 49 | 3 828 | 66,8 | 64 | 7 542 |
| V | 85,0 | 60 | 4 611 | 56,2 | 58 | 6 350 |
| VI | 114,3 | 76 | 6 203 | 62,9 | 63 | 7 099 |
| VII | 191,2 | 115 | 10 370 | 73,2 | 66 | 8 272 |
| VIII | 187,1 | 104 | 10 150 | 54,5 | 58 | 6 150 |
| IX | 108,4 | 73 | 5 879 | 70,3 | 74 | 7 940 |
| X | 89,9 | 63 | 4 875 | 41,4 | 44 | 4 679 |
| XI | 73,7 | 53 | 3 996 | 33,5 | 46 | 3 782 |
| I - XI 2012/I - XI 2011 | 95,3 | 113,2 | 95,3 | 55,0 | 64,7 | 55,0 |

SAOBRAĆAJ, SKLADIŠTENJE I VEZE
TRANSPORT, STORAGE AND COMMUNICATIONS

Drumski saobraćaj - Putnički / Road transport - passengers



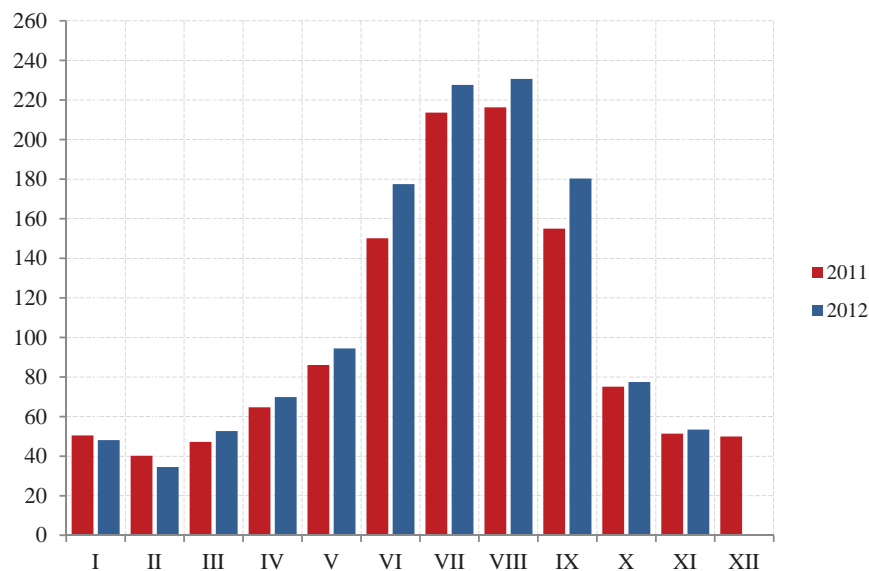
Ø 2011 = 100

| | DRUMSKI SAOBRAĆAJ / ROAD TRANSPORT | | | | | | | |
|----------------------------------|------------------------------------|--|---|--|------------------------|---|--|--|
| | PUTNIČKI / PASSENGERS | | | | ROBNI / GOODS | | | |
| | indeks <i>Index</i> | putnici u 000 <i>Passengers, thous.</i> | putnički km u 000 <i>Passenger kilometres in thous.</i> | autobuski km u 000 <i>Buskilometres in thous</i> | indeks <i>Index</i> | roba u 000 tona <i>Goods in thousands tonnes</i> | tonski km u 000 <i>Tonne- kilometres in thous.</i> | kamionski km u 000 <i>Truck kilometres in thous.</i> |
| 2007 | 176,2 | 5 738 | 141 247 | 17 630 | 89,6 | 2 131 | 91 786 | 16 269 |
| 2008 | 154,0 | 5 503 | 123 421 | 18 068 | 133,8 | 2 468 | 137 058 | 14 857 |
| 2009 | 127,1 | 5 536 | 101 928 | 16 272 | 175,0 | 1 724 | 179 288 | 11 667 |
| 2010 | 100,8 | 6 209 | 80 833 | 20 517 | 162,6 | 1 839 | 166 564 | 12 411 |
| 2011 | 100,0 | 6 240 | 80 166 | 18 700 | 100,0 | 1 247 | 102 465 | 12 108 |
| Ø I - XI 2011 | 100,5 | 522 | 6 713 | 1 564 | 99,9 | 106 | 8 532 | 1 010 |
| Ø I - XI 2012 | 142,0 | 480 | 9 488 | 1 606 | 73,9 | 34 | 6 307 | 1 013 |
| 2011 | | | | | | | | |
| XI | 88,2 | 497 | 5 891 | 1 558 | 123,3 | 121 | 10 532 | 1 025 |
| XII | 94,6 | 496 | 6 323 | 1 500 | 100,9 | 81 | 8 614 | 999 |
| 2012 | | | | | | | | |
| I | 88,2 | 340 | 5 890 | 1 368 | 54,5 | 40 | 4 658 | 675 |
| II | 57,2 | 329 | 3 819 | 913 | 55,5 | 22 | 4 743 | 830 |
| III | 99,4 | 406 | 6 638 | 1 528 | 61,1 | 47 | 5 221 | 1 040 |
| IV | 102,5 | 422 | 6 849 | 1 556 | 63,6 | 46 | 5 427 | 920 |
| V | 133,1 | 425 | 8 892 | 1 549 | 61,7 | 47 | 5 266 | 1 713 |
| VI | 150,4 | 495 | 10 046 | 1 636 | 60,8 | 27 | 5 194 | 925 |
| VII | 231,9 | 605 | 15 493 | 1 951 | 70,6 | 38 | 6 029 | 1 108 |
| VIII | 264,1 | 693 | 17 643 | 2 074 | 92,1 | 39 | 7 866 | 1 088 |
| IX | 182,1 | 590 | 12 164 | 1 753 | 98,4 | 24 | 8 401 | 916 |
| X | 147,1 | 498 | 9 829 | 1 809 | 112,2 | 24 | 9 582 | 934 |
| XI | 105,4 | 433 | 7 043 | 1 456 | 81,8 | 22 | 6 985 | 991 |
| I - XI 2012 / I - XI 2011 | 141,3 | 92,0 | 141,3 | 102,7 | 73,9 | 32,2 | 73,9 | 100,3 |

SAOBRAĆAJ, SKLADIŠTENJE I VEZE
TRANSPORT, STORAGE AND COMMUNICATIONS

Ø 2011 = 100

Vazdušni saobraćaj - putnički / Air transport - passengers



| | GRADSKI SAOBRAĆAJ <i>LOCAL TRANSPORT</i> | | VAZDUŠNI SAOBRAĆAJ, PROMET NA AERODROMIMA <i>AIR TRANSPORT, TRAFFIC AT AIRPORTS</i> | | | |
|----------------------------------|---|--|--|--|---|--|
| | indeks <i>Index</i> | prevezeno putnika u 000 <i>Passengers in thousands</i> | PUTNIČKI / <i>PASSENGERS</i> | | ROBNI / <i>GOODS</i> | |
| | | | indeks <i>Index</i> | prevoz putnika <i>Transport of passengers</i> | prevoz robe u tonama <i>Transport of goods in tonnes</i> | |
| 2007 | 204,8 | 1 491 | 81,4 | 1 024 491 | 1 320 | |
| 2008 | 212,5 | 1 547 | 88,1 | 1 109 095 | 1 490 | |
| 2009 | 74,7 | 544 | 76,0 | 956 405 | 1 478 | |
| 2010 | 81,0 | 590 | 95,8 | 1 205 536 | 2 159 | |
| 2011 | 100,0 | 728 | 100,0 | 1 258 835 | 1 074 | |
| Ø I - XI 2011 | 97,3 | 59 | 104,6 | 109 682 | 91 | |
| Ø I - XI 2012 | 84,9 | 52 | 113,3 | 118 889 | 64 | |
| 2011 | | | | | | |
| XI | 125,3 | 76 | 51,4 | 53 912 | 61 | |
| XII | 123,6 | 75 | 49,9 | 52 337 | 76 | |
| 2012 | | | | | | |
| I | 61,0 | 37 | 48,1 | 50 503 | 50 | |
| II | 83,6 | 51 | 34,5 | 36 163 | 57 | |
| III | 91,8 | 56 | 52,7 | 55 287 | 59 | |
| IV | 94,0 | 57 | 69,9 | 73 352 | 58 | |
| V | 92,3 | 56 | 94,4 | 99 073 | 64 | |
| VI | 87,4 | 53 | 177,5 | 186 165 | 75 | |
| VII | 60,7 | 37 | 227,6 | 238 739 | 78 | |
| VIII | 73,8 | 45 | 230,7 | 242 060 | 70 | |
| IX | 85,2 | 52 | 180,3 | 189 146 | 70 | |
| X | 103,3 | 63 | 77,5 | 81 314 | 66 | |
| XI | 103,3 | 63 | 53,4 | 55 980 | 59 | |
| I - XI 2012 / I - XI 2011 | 87,3 | 87,3 | 108,4 | 108,4 | 70,7 | |

SAOBRAĆAJ, SKLADIŠTENJE I VEZE / TRANSPORT, STORAGE AND COMMUNICATIONS
POMORSKI SAOBRAĆAJ / MARINE TRANSPORT

| | Prevoz robe / Transport of goods | | | Promet u lukama (u tonama) / Turnover in harbours (tonnes) | | | | |
|----------------------------------|----------------------------------|--------------------------------|---|---|-----------------|--|-------------------------------|------------------------------|
| | Indeks Index | u 000 t In thous, tonnes | tonske milje u hilj. Tonne milles in thousands | Indeks Index | ukupno Total | unutrašnji promet Internal turnover | izvoz ¹⁾ Export | uvoz ²⁾ Import |
| 2007 | 280,4 | 785 | 408 | 118,4 | 2 071 310 | 1 825 | 791 509 | 1 280 327 |
| 2008 | 212,5 | 595 | 352 | 111,4 | 1 949 409 | 8 350 | 683 990 | 1 219 948 |
| 2009 | 193,2 | 541 | 273 | 84,6 | 1 481 069 | - | 613 696 | 829 491 |
| 2010 | 157,5 | 441 | 239 | 100,5 | 1 758 692 | - | 835 499 | 798 668 |
| 2011 | 100,0 | 280 | 197 | 100,0 | 1 749 982 | - | 758 193 | 960 360 |
| Ø I - XI 2011 | 103,7 | 24 | 17 | 99,8 | 145 486 | | 66 569 | 76 087 |
| Ø I - XI 2012 | 107,0 | 9 | 18 | 71,2 | 103 816 | | 35 486 | 67 434 |
| 2011 | | | | | | | | |
| XI | 48,7 | 21 | 8 | 107,9 | 157 381 | - | 32 921 | 121 149 |
| XII | 60,9 | 16 | 10 | 102,6 | 149 636 | - | 25 931 | 123 398 |
| 2012 | | | | | | | | |
| I | 31,2 | 14 | 5 | 148,7 | 216 883 | - | 36 532 | 180 351 |
| II | 25,0 | 12 | 4 | 52,7 | 76 823 | - | 25 274 | 51 542 |
| III | 73,1 | 14 | 12 | 98,8 | 144 078 | - | 73 146 | 67 291 |
| IV | 48,7 | 13 | 8 | 70,1 | 102 220 | - | 42 003 | 60 217 |
| V | 60,9 | 7 | 10 | 66,9 | 97 492 | - | 66 051 | 31 441 |
| VI | 103,6 | 5 | 17 | 73,0 | 106 427 | - | 16 482 | 85 746 |
| VII | 275,0 | 6 | 44 | 58,1 | 84 762 | - | 33 333 | 51 429 |
| VIII | 283,1 | 4 | 47 | 55,1 | 80 412 | - | 34 570 | 45 842 |
| IX | 126,5 | 5 | 21 | 50,9 | 74 278 | - | 17 136 | 57 142 |
| X | 87,6 | 5 | 14 | 50,3 | 73 357 | - | 12 923 | 60 434 |
| XI | 68,0 | 5 | 11 | 58,5 | 85 242 | - | 32 894 | 50 334 |
| I - XI 2012 / I - XI 2011 | 103,1 | 39,7 | 103,1 | 71,4 | 71,4 | | 53,3 | 88,6 |

¹⁾Tranzit uovar prikazan kod izvoza ²⁾Tranzit istovar prikazan kod uvoza ¹⁾Transit loading presented in export, ²⁾Transit loading presented in import

P T T SAOBRAĆAJ / POSTAL, TELEGRAPH AND TELEPHONE (PTT) COMMUNICATIONS

| | Poštanske usluge / Postal services | | | | Telefonske usluge / Telephone services | |
|----------------------------------|--|---|---|--|--|--|
| | pisma u 000 komada Letters in thousands pcs. | paketi u 000 komada Packages in thousands pcs. | Preporučene pošiljke u 000 komada Registered mail in thousands pcs. | Tiskovine i ostalo, u 000 komada Other printed papers in thousands pcs. | fiksna telefonija Fixed telephony | mobilna telefonija Mobile telephony |
| | | | | | minuti u 000 Minutes in thous. | minuti u 000 Minutes in thous. |
| 2007 | 18 291 | 23 | 3 667 | 642 | 864 471 | 660 168 |
| 2008 | 20 521 | 25 | 4 227 | 930 | 650 567 | 1 027 704 |
| 2009 | 21 564 | 25 | 4 106 | 681 | 513 213 | 1 166 274 |
| 2010 | 20 763 | 25 | 4 171 | 642 | 380 585 | 1 262 626 |
| 2011 | 20 488 | 29 | 4 273 | 594 | 423 869 | 1 803 764 |
| Ø I - XI 2011 | 1 715 | 2 | 353 | 50 | 35 176 | 149 752 |
| Ø I - XI 2012 | 2 143 | 3 | 361 | 39 | 34 168 | 164 911 |
| 2011 | | | | | | |
| XI | 1 637 | 3 | 408 | 50 | 34 860 | 148 112 |
| XII | 1 622 | 3 | 391 | 45 | 36 938 | 156 493 |
| 2012 | | | | | | |
| I | 1 989* | 1 | 299 | 47 | 32 962 | 147 117 |
| II | 2 040* | 2 | 358 | 39 | 36 455 | 152 250 |
| III | 2 062* | 3 | 400 | 42 | 35 147 | 159 155 |
| IV | 2 012* | 3 | 345 | 42 | 33 520 | 155 360 |
| V | 2 214* | 3 | 328 | 38 | 34 319 | 166 861 |
| VI | 2 273* | 3 | 375 | 37 | 34 543 | 175 872 |
| VII | 2 247* | 3 | 383 | 38 | 35 551 | 186 745 |
| VIII | 2 159* | 3 | 319 | 32 | 34 892 | 184 260 |
| IX | 2 117* | 3 | 342 | 35 | 33 409 | 166 795 |
| X | 2 209* | 3 | 405* | 34 | 33 787 | 165 133 |
| XI | 2 247 | 3 | 417 | 46 | 31 260 | 154 473 |
| I - XI 2012 / I - XI 2011 | 124,9 | 115,4 | 102,3 | 78,3 | 97,1 | 110,1 |