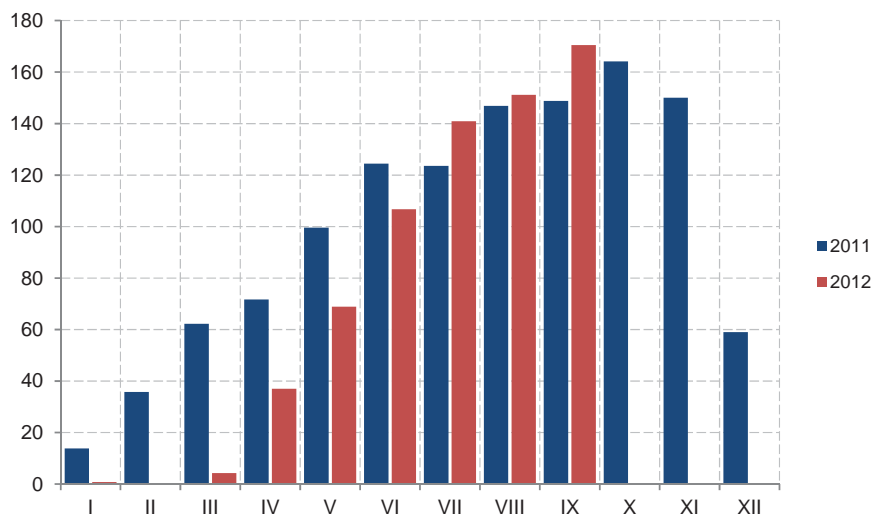


ŠUMARSTVO / FORESTRY



Ø 2011 = 100

| | Indeks Index | Ukupno Total | Proizvedeni sortimenti, m ³ / Production of forests assortments | | | | | | |
|--------------------------------|-----------------|-----------------|--|----------------------------|---------------------------------|-------------------------------|---------------------------|---------------------------------|-------------------------------|
| | | | Četinara / Conifers | | | | Lišćara / Deciduous trees | | |
| | | | trupci Saw logs | tehničko drvo Lumber | prostorno drvo Space wood | ogrijevno drvo Firewood | trupci Saw logs | prostorno drvo Space wood | ogrijevno drvo Firewood |
| 2007 | 94,4 | 263 787 | 151 440 | 8 878 | 12 623 | 367 | 45 000 | 14 388 | 31 091 |
| 2008 | 101,6 | 281 260 | 160 901 | 13 090 | 17 492 | 861 | 46 467 | 9 655 | 32 794 |
| 2009 | 77,1 | 216 546 | 128 520 | 6 525 | 10 992 | 2 149 | 29 121 | 5 748 | 33 491 |
| 2010 | 89,9 | 256 410 | 146 074 | 10 373 | 19 993 | 504 | 32 851 | 6 349 | 40 266 |
| 2011 | 100,0 | 293 734 | 151 956 | 7 457 | 34 839 | 361 | 44 910 | 12 662 | 41 549 |
| Ø I - IX 2011 | 91,9 | 22 705,6 | 11 079,2 | 523,6 | 2 705,5 | 31,2 | 3 935 | 790,9 | 3 640,2 |
| Ø I - IX 2012 | 75,6 | 18 375,1 | 9 833,4 | 525,2 | 935,4 | 225,7 | 2 679,9 | 1 076,7 | 3 098,8 |
| 2011 | | | | | | | | | |
| IX | 148,8 | 36 730 | 18 612 | 739 | 3 103 | 31 | 6 218 | 1 401 | 6 626 |
| X | 164,2 | 38 579 | 22 834 | 1 295 | 3 523 | 30 | 4 917 | 1 400 | 4 580 |
| XI | 150,0 | 36 008 | 21 207 | 987 | 4 718 | 7 | 3 520 | 2 583 | 2 986 |
| XII | 59,0 | 14 796 | 8 202 | 463 | 2 248 | 43 | 1 058 | 1 561 | 1 221 |
| 2012 | | | | | | | | | |
| I | 0,8 | 188 | 157 | 9 | 22 | - | - | - | - |
| II | - | - | - | - | - | - | - | - | - |
| III | 4,3 | 965 | 867 | 37 | 61 | - | - | - | - |
| IV | 37,0 | 7695 | 5475 | 331 | 1820 | 69 | 369 | 56 | 553 |
| V | 68,9 | 16 204 | 8 865 | 582 | 946 | 60 | 2 812 | 496 | 2 443 |
| VI | 106,7 | 24 939 | 13 929 | 733 | 664 | 25 | 4 666 | 1 352 | 3 570 |
| VII | 140,9 | 35 096 | 17 581 | 680 | 1 792 | 1 275 | 5 826 | 1 724 | 6 218 |
| VIII | 151,2 | 38 796 | 18 705 | 981 | 2 346 | 363 | 4 796 | 3 764 | 7 841 |
| IX | 170,5 | 40 515 | 22 922 | 1 374 | 768 | 239 | 5 650 | 2 298 | 7 264 |
| I - IX 2012/I - IX 2011 | 82,3 | 80,9 | 80,4 | 100,3 | 34,6 | 722,8 | 68,1 | 136,1 | 85,1 |