

ZAVOD ZA STATISTIKU CRNE GORE
STATISTICAL OFFICE OF MONTENEGRO

GODINA LVIII / YEAR (58)

ISSN 0354-365X

MJESEČNI STATISTIČKI PREGLED
MONTHLY STATISTICAL REVIEW

2010
7

PODGORICA, 2010

IZDAJE I ŠTAMPA: Zavod za statistiku Crne Gore - MONSTAT
PUBLISHED AND PRINTED BY: Statistical Office of Montenegro - MONSTAT

ODGOVARA: Radomir Đurović, direktor
RESPONSIBLE: Radomir Đurović, Director

Podgorica, IV Proleterske br. 2, Tel: +382 20 230-811
E-mail: statistika@monstat.org Web Site: www.monstat.org

CIP – Katalogizacija u publikaciji
Centralna narodna biblioteka Crne Gore, Cetinje
311 / 314

Mjesečni statistički pregled = Monthly
Statistical review. Urednik Rajko Laković. – God.
1, br.1 (1953) – . - Podgorica (IV Proleterske br. 2)
Zavod za statistiku Crne Gore – Monstat, 1992 (Podgorica:
Zavod za statistiku Crne Gore) . – 30 cm

Mjesečno. – je nastavak: Mjesečni statistički pregled
NR Crne Gore (Titograd) = ISSN 0544-912X
ISSN 0354-365X = Mjesečni statistički pregled (Podgorica)
COBISS. CG ID 07622928

UVOD

U MJESEČNOM STATISTIČKOM PREGLEDU Zavod za statistiku – MONSTAT objavljuje podatke za Crnu Goru. To su službeni statistički podaci koji se prikupljaju i obrađuju u skladu sa programom statističkih istraživanja i rezultat su rada zvaničnih statističkih službi.

Statistički podaci u MJESEČNOM STATISTIČKOM PREGLEDU prikazani su u godišnjim, kvartalnim i mjesečnim serijama i sistematizovani su u dva dijela. Godišnje serije obuhvataju tri do pet posljednjih uzastopnih godina. Kvartalne serije se odnose na kvartale u prošloj i tekućoj godini, a mjesečne serije obuhvataju period od trinaest mjeseci iz tekuće i prethodne godine. Ispod odgovarajućih tabela, gdje je potrebno, daju se kratka objašnjenja.

Pored podataka koje prikuplja i obrađuje Zavod za statistiku Crne Gore - MONSTAT, u ovom broju PREGLEDA su objavljeni i podaci Zavoda za zapošljavanje i Centralne Banke Crne Gore.

Podaci za tekuću godinu su obično prethodni, pa su moguće manje greške koje se postepeno ispravljaju u narednim brojevima i obilježavaju se zvjezdicom, u onom broju PREGLEDA u kojem je izvršena ispravka.

Sadržaj publikacije je prilagođen međunarodnim potrebama i obavezama u smislu primjene Klasifikacije djelatnosti (NACE Rev1), koja se primjenjuje od 01.01.2001. godine.

Od januara 2008. godine MJESEČNI STATISTIČKI PREGLED je obogaćen novim sadržajima i preveden je na engleski jezik.

INTRODUCTION

Statistical Office of Montenegro publishes statistical data for Montenegro in the MONTHLY STATISTICAL REVIEW. These are the official statistical data collected and processed according to the Programme of Statistical Surveys as the result of official statistical services.

Statistical data in the MONTHLY STATISTICAL REVIEW are presented in annual, quarterly and monthly series and are systemized in two parts. The Annual series of data cover 3-5 last consecutive years. Quarterly series refer to quarters in the previous and current year, and monthly series include period of thirteen months from the previous and current year. Where necessary, short explanations are given below the tables.

Besides data collected by the Statistical Office of Montenegro - MONSTAT, this issue of MONTHLY STATISTICAL REVIEW also publishes data from Employment Agency and Central Bank of Montenegro.

Data for the current year are usually preliminary, so minor errors are possible and are gradually corrected in the following numbers, and they are marked with the small star in the number of the MONTHLY STATISTICAL REVIEW where the correction has been made.

The contents of the publication is adapted to the international needs and obligations regarding the application of the Classification of Activities (NACE, REV1), used since January 2001.

Since January 2008, the MONTHLY STATISTICAL REVIEW contains new contents and has been translated into English language.

ZNACI

SYMBOLS

nema pojave	=	—	=	No occurrence of event
ne raspolaze se podatkom	=	...	=	Data not available
podatak je manji od 0,5 date jedinice mjere	=	0	=	Value not zero but less than 0,5 of the unit of E
prosjeak	=	Ø	=	Average
ispravljen podatak	=	*	=	Corrected data
nepotpun, odnosno nedovoljno provjeren podatak	=	()	=	Incomplete or insufficiently checked data

SADRŽAJ

UVOD	3
SADRŽAJ	5
OPŠTI PREGLED INDEKSA	
Kvartalni indeksi	7
Mjesečni indeksi	8
STANOVNIŠTVO	
Prirodno kretanje stanovništva	10
Prirodno kretanje stanovništva po opštinama	11
Kretanje stanovništva unutar Crne Gore po opštinama	12
ZAPOSLENOST I ZARADE	
Zaposleni po sektorima djelatnosti	13
Zaposleni po opštinama	14
Nezaposlena lica	15
Prosječne zarade po sektorima djelatnosti	16
Prosječne zarade bez poreza i doprinosa po sektorima djelatnosti	17
Indeksi prosječnih zarada po sektorima djelatnosti	18
Indeksi prosječnih zarada bez poreza i doprinosa po sektorima djelatnosti	19
Prosječne zarade po opštinama	20
Prosječne zarade bez poreza i doprinosa po opštinama	21
CIJENE	
Indeksi cijena proizvođača industrijskih proizvoda	22
Indeksi potrošačkih cijena po grupama proizvoda	24
Indeksi potrošačkih cijena	26
ŠUMARSTVO	27
INDUSTRIJA	
Indeksi industrijske proizvodnje po sektorima	28
Indeksi industrijske proizvodnje po podsektorima	29
GRAĐEVINARSTVO	
Vrijednost izvršenih i ugovorenih radova, broj zaposlenih i izvršeni efektivni časovi	31
SPOLJNA TRGOVINA	
Izvoz i uvoz po zemljama	32
Izvoz i uvoz robe	33
UNUTRAŠNJA TRGOVINA	
Promet u trgovini na malo	36
Prodaja i otkup proizvoda poljoprivrede, šumarstva i ribarstva	37
UGOSTITELJSTVO	
Promet u ugostiteljstvu	38
TURIZAM	
Dolasci i noćenja turista po zemljama i vrsti mjesta	39
Dolasci i noćenja gostiju po vrstama turističkih mjesta	40
Broj dolazaka i noćenja turista	40
SAOBRAĆAJ, SKLADIŠTENJE I VEZE	
Željeznički saobraćaj	41
Drumski saobraćaj	42
Vazdušni saobraćaj	43
Pomorski saobraćaj	44
PTT saobraćaj	44
MONETARNI AGREGATI I PLATNI BILANS	45
METODOLOŠKA OBJAŠNJENJA	47

CONTENTS

INTRODUCTION	3
CONTENTS	5
SUMMARY OF INDICES	
Quarterly indices	7
Monthly indices	8
POPULATION	
Natural population changes	10
Natural population changes by municipality	11
Migrations inside Montenegro by municipality	12
EMPLOYMENT AND WAGES	
Employees by activity sectors	13
Employees by municipality	14
Unemployed persons	45
Average wages by activity sectors	16
Average wages without taxes and contributions by activity sector	17
Indices of average wages by activity sector	18
Indices of average wages without taxes and contributions by activity sector	19
Average wages by municipality	20
Average wages without taxes and contributions by municipality	21
PRICES	
Producers price indices for industrial products	22
Retail by groups of products	24
Consumer prices index	26
FORESTRY	27
INDUSTRY	
Indices of industrial production by sectors	28
Indices of industrial production by subsectors	29
CONSTRUCTION	
Value of finalized and ordered works, number of employees and finalized effective hours	31
EXTERNAL TRADE	
Exports and imports by countries	32
Exports and imports of goods	33
DOMESTIC TRADE	
Turnover in retail trade	40
Sale and buying out of products from agriculture, forestry and fishery	41
CATERING	
Turnover in catering	42
TOURISM	
Tourist arrivals and tourist overnight stays by country and type of resort	43
Tourist arrivals and tourist overnight stays by type of resort	44
Tourist arrivals and tourist overnight stays	44
TRANSPORT, STORAGE AND COMMUNICATIONS	
Railway transport	45
Road transport	46
Air transport	47
Marine transport	48
Postal, telegraph and telephone (PTT) communications	48
MONETARY AGGREGATES AND BALANCE OF PAYMENTS	49
METHODOLOGICAL EXPLANATION	51

OPŠTI PREGLED INDEKSA / SUMMARY OF INDICES

Kvartalni indeksi / Quarterly indices

	2009 2008	Kvartali / <i>Quarters</i>							
		II 2009 I 2009	III 2009 II 2009	IV 2009 III 2009	I 2010 IV 2009	I 2010 I 2009	II 2010 II 2009	II 2010 I 2010	
STANOVNIŠTVO ¹⁾									POPULATION ¹⁾
Živorodeni	105.2	105.5	116.6	93.7	84.2	84.2	Liveborn
Umrli	102.7	102.3	103.0	104.0	89.4	89.4	Deaths
Prirodni priraštaj	107.3	113.7	147.6	77.3	69.7	69.7	Natural increase
Zaključeni brakovi	114.0	110.6	134.4	88.9	65.4	81.8	Marriages
Razvedeni brakovi	99.1	65.2	327.9	70.2	77.1	83.5	Divorces
ZAPOSLENOST I ZARADE									EMPLOYMENT AND EARNINGS
Broj zaposlenih	104.8	103.1	101.7	97.3	99.0	101.1	Number of employees
Lica koja traže zaposlenje	96.2	95.6	97.2	109.0	109.1	110.5	116.0	100.4	Persons looking for employm.
Nominalne zarade bez poreza i doprinosa	111.3	100.1	98.1	100.6	101.1	100.0	101.7	101.9	Nominal wages without taxes and contributions
Realne zarade bez poreza i doprinosa	107.6	99.0	98.3	100.4	101.1	99.4	101.4	101.7	Real wages without taxes and contributions
CIJENE									PRICES
Indeks potrošačkih cijena	103.4	101.1	99.8	100.2	100.0	102.6	100.3	100.2	Consumer prices index
Hrana i bezalkoholna pića	103.3	100.8	98.5	99.9	100.8	98.9	98.7	100.2	Food and non alch. beverages
Odjeća i obuća	100.8	99.5	99.8	101.0	99.9	100.0	100.3	99.8	Clothes and footwear
Pokućstvo i oprema za kuću	97.3	98.1	98.4	97.9	100.4	93.2	95.6	99.7	Household furnishing
Cijene proizvođača ind.proizvoda	96.1	98.5	98.3	101.6	96.9	94.2	99.9	103.2	Produc. price ind. for ind.prod.
INDUSTRIJA									INDUSTRY
Indeksi fizičkog obima	67.8	69.6	73.1	130.9	128.3	85.5	120.5	98.2	Indices of physical scope
GRAĐEVINARSTVO									CONSTRUCTION
Vrijednost izvedenih građevinskih radova	78,5	134,9	109,5	95,9	57,9	82,0	Value of performed construction works
Izvršeni efektivni časovi na gradilištu	80,8	110,6*	95,9	92,3	92,3	90,6	Performed effective hours at the construction site
SPOLJNA TRGOVINA									EXTERNAL TRADE
Izvoz	63.9	72.6	145.6	102.6	71.8	77.8	166.1	155.0	Export
Uvoz	65.4	117.4	105.9	101.8	69.5	87.9	106.8	142.5	Import
UNUTRAŠNJA TRGOVINA									DOMESTIC TRADE
Promet u trgovini na malo	91.0	118.3	122.2	83.4	80.6	97.2	105.2	128	Turnover in retail trade
UGOSTITELJSTVO	105.0	265.4	240.5	25.5	77.3	100.4	95.6	253.1	CATERING
TURIZAM									TOURISM
Posjete turista	101.6	387.1	396.5	7.2	77.3	85.6	103.3	467.1	Visits of tourists
Noćenja turista	96.9	477.4	475.2	4.4	75.7	75.2	104.6	664.6	Overnight stays of tourists
SAOBRAĆAJ, SKLADIŠTENJE I VEZE									TRANSPORT, STORAGE AND COMMUNICATIONS
Drumski-prevoz robe	130.8	152.0	95.8	96.5	65.5	92.1	80.5	165.0	Road - transport of goods
Prevoz putnika	82.6	155.5	103.0	56.3	68.8	62.1	78.5	196.4	Transport of passengers
Željeznički – prevoz robe	54.7	63.1	135.4	108.4	108.5	119.0	240.4	127.5	Railway - transport of goods
Prevoz putnika	79.4	133.3	160.4	49.7	127.2	120.5	71.1	78.7	Transport of passengers
Vazdušni – prevoz robe	99.2	102.4	114.5	290.1	20.9	71.0	320.7	461.8	Air – transport of goods
Prevoz putnika	86.2	197.9	192.7	27.8	110.0	116.6	118.3	200.8	Transport of passengers
Pomorski– Prevoz robe – t milje	86.3	83.4	343.1	36.3	82.8	86.7	117.9	113.4	Marine- transport of goods – t miles

OPŠTI PREGLED INDEKSA / SUMMARY OF INDICES

Mjesečni indeksi / Monthly indices

Ø 2009 = 100

	2009 2008	I – VI 2010 I – VI 2009	VI- 2010 V -2010	2009				
				VI	VII	VIII	IX	X
STANOVNIŠTVO ¹⁾								
Živorodeni	105.2	81.3	98.6	103.5	119.7	102.0	114.4	110.9
Umrli	102.7	86.0	97.7	101.1	95.2	107.6	95.0	108.9
Prirodni priraštaj	107.3	65.9	104.7	105.4	169.3	86.7	152.9	111.8
Zaključeni brakovi	114.0	94.4	116.6	96.1	125.1	138.0	136.7	133.9
Razvedeni brakovi	99.1	92.0	93.0	59.0	131.8	65.9	291.3	114.5
ZAPOSLENOST I ZARADE								
Broj zaposlenih	104.8			102.7	102.6	102.8	101.6	100.8
Lica koja traže zaposlenje	96.2	113.2	96.7	95.6	95.3	94.5	96.2	101.2
Nominalne zarade bez poreza i doprinosa	111.3	100.9	97.1	100.6	98.7	99.6	98.1	98.5
Realne zarade bez poreza i doprinosa	107.6	100.5	97.5	100.7	99.4	99.1	97.9	98.3
CIJENE								
Indeks potrošačkih cijena	103.4	100.4	99.6	99.9	99.3	100.5	100.2	100.2
Hrana i bezalkoholna pića	103.3	98.9	99.2	99.9	98.7	99.3	99.2	99.0
Odjeća i obuća	100.8	100.1	100.0	99.7	99.6	99.6	99.5	100.5
Pokućstvo i oprema za kuću	97.3	94.4	99.9	100.2	99.8	98.6	96.9	96.7
Cijene proizvođača industrijskih proizv.	96.1	97.1	99.3	98.5	96.9	97.6	98.6	99.3
ŠUMARSTVO								
Indeksi fizičkog obima	75.8	113.6	183.9	140.5	139.0	186.4	182.9	106.8
INDUSTRIJA								
Indeksi fizičkog obima	67.8	99.9	108.9	84.2	73.8	66.7	72.3	86.4
SPOLJNA TRGOVINA								
Izvoz	63.9	114.6	67.8	115.0	145.3	106.5	76.0	115.0
Uvoz	65.4	98.1	121.6	106.7	107.7	103.8	107.0	110.7
UNUTRAŠNJA TRGOVINA								
Promet robe na malo	91.02	101.5	110.9	102.8	125.2	131.3	102.3	100.2
Prodaja i otkup proizvoda poljoprivrede, šumarstva i ribarstva	104.4	86.1	158.2	100.2	105.7	140.3	114.3	117.9
UGOSTITELJSTVO								
Promet u ugostiteljstvu	93.0	96.9	119.7	125.5	200.6	251.0	212.6	61.3
TURIZAM								
Posjete turista	101.6	99.6	153.3	113.5	304.5	397.3	162.1	33.6
Noćenja turista	96.9	99.5	213.6	117.8	313.7	466.3	144.1	22.8
SAOBRAĆAJ, SKLADIŠT. I VEZE								
Drumski – prevoz robe	130.8	84.8	71.9	116.0	113.3	102.5	119.0	66.5
Prevoz putnika	82.6	72.2	85.9	130.8	149.2	129.8	101.0	80.7
Željeznički – prevoz robe	54.7	166.0	97.2	88.9	80.4	104.8	139.5	137.1
Prevoz putnika	79.4	92.3	116.7	151.1	169.2	169.2	87.0	72.5
Vazdušni - prevoz putnika	86.2	117.8	154.6	152.5	205.7	231.8	145.5	45.2
Pomorski- prevoz robe – t milje	77.6	100.9	93.0	51.5	230.3	244.1	126.0	80.6

¹⁾ Prethodni podaci²⁾ Podaci za I – V 2010/ I – V 2009³⁾ Podaci za V 2010/ IV 2010¹⁾ Previous data²⁾ Data for I – IV 2010/ I – IV 2009³⁾ Data for IV 2010/ III 2010

OPŠTI PREGLED INDEKSA/ SUMMARY OF INDICES

Mjesečni indeksi / Monthly indices

2009		2010						
XI	XII	I	II	III	IV	V	VI	
97.4	106.7	86.1	81.5	76.8	71.5	67.3	...	POPULATION ¹⁾
100.3	100.7	99.5	88.6	87.4	89.9	86.0	...	Liveborn
88.1	116.3	56.0	65.4	53.1	30.1	28.5	...	Deaths
116.3	110.1	76.4	72.4	58.4	95.9	111.8	...	Natural increase
54.8	117.4	57.9	81.6	126.3	113.2	105.3	...	Marriages
								Divorces
								EMPLOYMENT AND EARNINGS
100.3	97.5	98.9	98.5	98.3	...			Number of employees
104.3	106.3	109.4	114.1	116.7	116.9	114.1	110.3	Persons looking for employment
								Nominal wages without taxes and contributions
98.5	101.5	101.7	100.0	100.4	100.4	105.2	102.2	Real wages without taxes and contributions
98.3	101.2	101.7	99.9	99.9	99.8	104.7	102.1	
								PRICES
100.2	100.3	100.0	100.1	100.5	100.6	100.5	100.1	Consumer prices index
98.7	99.1	99.4	99.7	100.1	100.3	100.2	99.4	Food and non alch. beverages
100.5	100.1	100.4	100.2	100.2	100.2	100.4	100.0	Clothes and footwear
96.6	96.2	96.9	97.0	96.9	96.7	96.6	96.5	Household furnishing
99.7	100.4	97.4	96.7	96.1	97.6	101.3	100.6	Produc. price ind. for ind. prod.
								FORESTRY
91.4	79.7	13.8	19.9	42.4	81.2	110.3	202.8	Indices of physical scope
								INDUSTRY
85.0	107.1	121.6	108.4	127.3	121.9	109.5	119.2	Indices of physical scope
								EXTERNAL TRADE
117.7	103.7	65.8	90.4	114.3	126.5	174.5	118.3	Export
100.1	113.5	57.8	83.6	101.4	106.8	107.9	131.2	Import
								INTERNAL TRADE
89.4	109.9	73.7	86.1	81.4	93.05	102.3	113.5	Turnover of retail trade goods
181.9	104.3	52.1	58.6	59.5	57.5	57.0	90.2	Sales and buy out of products in agriculture, forestry and fishing
								CATERING
41.9	37.3	34.3	34.3	39.9	40.9	106.4	127.3	Turnover in catering
								TOURISM
14.8	14.1	14.1	17.0	17.1	25.7	78.6	120.6	Visits of tourists
10.1	7.7	9.1	10.2	11.3	15.4	60.0	128.2	Overnight stays of tourists
								TRANSPORT, STORAGE AND COMMUNIC.
96.0	123.1	60.4	45.9	41.1	101.9	105.1	75.5	Road - transport of goods
68.4	64.9	57.0	44.4	104.1	90.7	101.4	87.0	Transport of passengers
111.5	103.3	130.0	128.9	123.1	131.1	180.5	175.4	Railway - transport of goods
61.4	90.7	84.6	133.1	66.5	66.5	72.6	84.7	Transport of passengers
54.3	62.4	59.9	52.7	65.7	73.6	111.7	172.7	Air - transport of passengers
71.8	66.1	55.1	49.8	75.8	63.0	73.6	68.3	Marine- transport of goods - t miles

¹⁾ Prethodni podaci¹⁾ Preliminary data

PRIRODNO KRETANJE STANOVNIŠTVA
NATURAL POPULATION CHANGES

Crna Gora / Montenegro

	Živorodeni <i>Live births</i>			Umrli <i>Deaths</i>			Vitalni indeks <i>Vital index</i>	Prirodni priraštaj <i>Natural increase</i>	Brakovi / <i>Marriages</i>	
	<i>ukupno</i> <i>Total</i>	<i>muško</i> <i>Male</i>	<i>žensko</i> <i>Female</i>	<i>ukupno</i> <i>Total</i>	<i>muško</i> <i>Male</i>	<i>žensko</i> <i>Female</i>			<i>sklopljeni</i> <i>New marriages</i>	<i>razvedeni</i> <i>Divorces</i>
2004	7849	4030	3819	5707	3011	2696	1.38	2142	3440	505
2005	7352	3883	3469	5839	3082	2757	1.26	1513	3291	499
2006	7531	3969	3562	5968	3092	2876	1.26	1563	3462	470
2007	7834	4136	3698	5979	3048	2931	1.31	1855	4005	453
2008	8258	4313	3945	5708	2982	2726	1.45	2550	3445	460
2009	8685	4617	4068	5862	3008	2854	1.48	2823	3928	456
Ø I - V 2009	657	358	299	504	251	253	1.30	152	288	40
Ø I - V 2010	542	281	261	436	236	200	1.24	105	272	37
2009										
V	666	381	285	480	255	225	1.39	186	358	42
VI	723	397	326	472	255	217	1.53	251	295	44
VII	766	399	367	450	236	214	1.70	316	326	28
VIII	760	391	369	540	294	246	1.41	220	415	20
IX	767	403	364	437	230	207	1.76	330	417	33
X	772	398	374	525	271	254	1.47	247	401	44
XI	696	385	311	446	232	214	1.56	250	340	38
XII	917	455	462	470	235	235	1.95	447	295	49
2010 ¹⁾										
I	596	310	286	477	266	211	1.25	119	250	22
II	567	297	270	427	230	197	1.33	140	237	31
III	555	289	266	421	225	196	1.32	134	191	48
IV	503	258	245	437	226	211	1.15	66	314	43
V	487	251	236	420	235	185	1.16	67	366	40
VI
I-V 2010 / I-V 2009	82.5	78.5	87.2	86.5	94.2	78.9		69.0	94.4	92.0
I-VI 2010 / I-VI 2009

¹⁾ Prethodni podaci

¹⁾ Preliminary data

PRIRODNO KRETANJE STANOVNIŠTVA PO OPŠTINAMA
NATURAL POPULATION CHANGES BY MUNICIPALITY
I – V 2010. god.¹⁾

	Živorodeni / <i>Live births</i>			Umrli / <i>Deaths</i>			Vitalni indeks <i>Vital index</i>	Prirodni priraštaj <i>Natural increase</i>	Brakovi / <i>Marriages</i>	
	ukupno <i>Total</i>	muški <i>Male</i>	ženski <i>Female</i>	ukupno <i>Total</i>	muški <i>Male</i>	ženski <i>Female</i>			sklopljeni <i>New marriages</i>	razvedeni <i>Divorces</i>
CRNA GORA MONTENEGRO	2708	1405	1303	2182	1182	1000	1.24	526	1358	184
ANDRIJEVICA	16	10	6	27	16	11	0.59	-11	6	-
BAR	180	87	93	122	76	46	1.48	58	101	14
BERANE	144	78	66	133	75	58	1.08	11	78	6
BIJELO POLJE	233	118	115	187	104	83	1.25	46	85	10
BUDVA	78	46	32	53	27	26	1.47	25	49	1
CETINJE	59	30	29	67	46	21	0.88	-8	27	3
DANILOVGRAD	64	30	34	67	29	38	0.96	-3	30	8
HERCEG NOVI	112	59	53	109	53	56	1.03	3	84	23
KOLAŠIN	42	22	20	50	21	29	0.84	-8	15	1
KOTOR	100	53	47	84	34	50	1.19	16	63	4
MOJKOVAC	26	15	11	41	21	20	0.63	-15	13	2
NIKŠIĆ	301	156	145	273	151	122	1.10	28	157	10
PLAV	63	34	29	51	21	30	1.24	12	29	4
PLJEVLJA	93	39	54	152	73	79	0.61	-59	52	8
PLUŽINE	10	6	4	15	8	7	0.67	-5	6	-
PODGORICA	878	456	422	569	329	240	1.54	309	425	65
ROŽAJE	145	70	75	47	25	22	3.09	98	61	17
ŠAVNIK	8	4	4	14	8	6	0.57	-6	3	-
TIVAT	65	37	28	40	20	20	1.63	25	33	-
ULCINJ	81	51	30	62	35	27	1.31	19	37	8
ŽABLJAK	10	4	6	19	10	9	0.53	-9	4	-

¹⁾ Prethodni podaci¹⁾ Preliminary data

KRETANJE STANOVNIŠTVA UNUTAR CRNE GORE PO OPŠTINAMA
MIGRATIONS INSIDE MONTENEGRO BY MUNICIPALITY

I-VI 2010. god.¹⁾

OPŠTINE / MUNICIPALITIES	DOSELJENI / MOVED IN	ODSELJENI / MOVED OUT OF	SALDO / BALANCE
UKUPNO / TOTAL	1716	1716	0
ANDRIJEVICA	16	26	-10
BAR	232	96	136
BERANE	61	133	-72
BIJELO POLJE	74	214	-140
BUDVA	147	52	95
CETINJE	33	80	-47
DANILOVGRAD	94	66	28
HERCEG NOVI	69	63	6
KOLAŠIN	7	61	-54
KOTOR	58	63	-5
MOJKOVAC	21	61	-40
NIKŠIĆ	99	210	-111
PLAV	19	40	-21
PLJEVLJA	20	92	-72
PLUŽINE	2	23	-21
PODGORICA	615	218	397
ROŽAJE	21	81	-60
SAVNIK	2	46	-44
TIVAT	63	36	27
ULCINJ	47	36	11
ŽABLJAK	16	19	-3

¹⁾ Prethodni podaci

¹⁾ Preliminary data

ZAPOSLENI PO SEKTORIMA DJELATNOSTI
EMPLOYEES BY ACTIVITY SECTORS

	Ukupno <i>Total</i>	PO SEKTORIMA / BY ACTIVITY SECTORS						
		poljoprivreda šumarstvo i vodoprivreda <i>Agriculture, forestry and water supply</i>	ribarstvo <i>Fishing</i>	vađenje ruda i kamena <i>Mining and quarrying</i>	prerađivačka industrija <i>Manufacturing</i>	proizvodnja elekt. energije <i>Electricity supply</i>	građevinarstvo <i>Construction</i>	trgovina na veliko i malo, opravka <i>Wholesale and retail trade, repair</i>
Ø 2006	150800	2607	115	4159	26065	5627	6853	29602
Ø 2007	156408	2586	112	3753	25697	5594	6647	30750
Ø 2008	166221	2651	129	3721	24335	6042	8831	31854
Ø 2009	174152	2700	119	3178	21824	5456	9997	36117
Ø I - VI 2009	172531	2693	124	3278	22885	5630	9992	34547
Ø I - VI 2010
2009 ¹⁾								
V	174218	2657	123	3115	22412	5353	10489	35693
VI	178839	2654	113	3103	22449	5523	10687	36180
VII	178622	2630	115	3097	21929	5552	10340	36139
VIII	179016	2740	119	3197	21300	5358	10278	37823
IX	176936	2734	114	3081	20807	5273	9998	38264
X	175468	2717	114	3081	20694	5273	9965	38226
XI	174736	2720	113	3001	20427	5267	9914	38225
XII	169859	2710	111	3017	19419	4972	9520	37436
2010								
I	172301	2729	111	2927	19424	5207	10080	38339
II	171557	2767	111	2464	18945	5214	9990	38713
III	171263	2729	112	2571	18847	5172	9228	39415
IV
V
VI
I-VI 2010/I-VI 2009

/nastavak/

/ continued /

	PO SEKTORIMA / BY ACTIVITY SECTORS							
	hoteli i restorani <i>Hotels and restaurants</i>	saobraćaj, skladištenje i veze <i>Transport, storage and communi-cations</i>	finansijsko posredovanje <i>Financial activities</i>	aktivnosti u vezi s nekretninama <i>Real estate activities, renting</i>	državna uprava i obav. socijalno osiguranje <i>Public administration and social insurance</i>	obrazo- vanje <i>Education</i>	zdravstveno i socijalno osiguranje <i>Health and social work</i>	ostale komu- nalne, društ. i lične usluge <i>Other community, social & pers. service activities</i>
Ø 2006	10928	12133	3114	5905	10345	12846	12012	8489
Ø 2007	11307	11358	3143	5354	17575	12687	12004	7841
Ø 2008	14641	12798	3476	5631	18643	12892	12356	8221
Ø 2009	16678	13858	3748	7356	18860	12992	12238	9031
Ø I - VI 2009	16433	14097	3582	6558	18809	13050	12238	8615
Ø I - VI 2010
2009 ¹⁾								
V	16861	14274	3594	6759	18906	13092	12164	8726
VI	19862	14767	3644	7017	18824	12993	12213	8810
VII	20049	14497	3718	7709	18845	12919	12205	8878
VIII	19062	13640	3803	8050	18946	12938	12245	8517
IX	16940	13475	4013	8335	19005	13023	12282	9592
X	15777	13425	4008	8314	18983	13013	12296	9582
XI	15364	13399	4013	8350	18998	13005	12309	9631
XII	14351	13275	3925	8163	18691	12706	12089	9474
2010								
I	14627	13437	3959	8292	18686	12755	12183	9545
II	14656	13102	3943	8334	18671	12757	12245	9645
III	13809	13369	3934	8580	18692	12708	12327	9770
IV
V
VI
I-VI 2010/I-VI 2009

¹⁾ Vidi metodološka objašnjenja na strani 47¹⁾ See methodological explanation on page 47

ZAPOSLENI PO OPŠTINAMA / EMPLOYEES BY MUNICIPALITY

	Opštine / Municipalities										
	Andrijevica	Bar	Berane	Bijelo Polje	Budva	Danilovgrad	Žabljak	Kolašin	Kotor	Mojkovac	Nikšić
Ø 2006	540	11105	5218	7316	9308	2541	805	1410	5547	1495	17616
Ø 2007	528	11125	5803	8060	8323	2496	937	1591	5983	1503	17481
Ø 2008	537	11876	6092	8628	8951	2969	986	1728	6378	1638	18312
Ø 2009	536	12283	6077	8643	10660	3158	999	1846	6723	1723	18682
Ø I - VI 2009	536	12209	6122	8768	9960	3107	1003	1843	6611	1705	18765
Ø I - VI 2010
2009 ¹⁾											
V	537	12221	6131	8704	10546	3111	1004	1845	6690	1692	18679
VI	537	13056	6083	8544	12459	3148	1003	1857	7011	1781	18758
VII	537	12892	6086	8639	12334	3182	1007	1865	6983	1777	18738
VIII	540	12959	6040	8610	12545	3206	1023	1857	7000	1775	18740
IX	540	12460	6034	8563	11647	3231	998	1868	6903	1802	18745
X	543	12314	6025	8491	10823	3192	984	1839	6826	1802	18758
XI	535	12345	6079	8480	10664	3236	981	1815	6717	1781	18625
XII	525	11180	5935	8327	10147	3203	976	1844	6579	1512	17987
2010											
I	526	12502	6073	8409	10224	3202	995	1861	6655	1654	18420
II	518	12340	6059	8363	10293	3208	989	1786	6701	1646	17728
III	518	12287	5992	8391	10231	3203	985	1856	6639	1650	17863
IV
V
VI
I-VI 2010/I-VI 2009

/nastavak/

/ continued /

	Opštine / Municipalities									
	Plav	Plužine	Pljevlja	Podgorica	Rožaje	Tivat	Ulcinj	Herceg Novi	Cetinje	Šavnik
Ø 2006	1470	913	7233	53103	3292	2940	3994	10130	4545	279
Ø 2007	1425	952	7100	56118	3148	3632	3873	11149	4890	291
Ø 2008	1411	938	7286	61032	3064	3755	4185	11763	4396	296
Ø 2009	1403	937	7284	64736	3187	4129	4400	12254	4197	295
Ø I - VI 2009	1386	937	7311	64148	3192	4013	4365	12096	4172	284
Ø I - VI 2010
2009 ¹⁾										
V	1377	945	7358	64800	3243	4213	4353	12271	4211	287
VI	1387	948	7310	64996	3244	4279	4709	13204	4241	284
VII	1389	916	7307	65329	3193	4402	4498	12996	4238	314
VIII	1432	959	7304	65408	3186	4406	4518	12950	4240	318
IX	1431	953	7327	65469	3199	4292	4465	12474	4218	317
X	1427	948	7331	65588	3211	4191	4431	12214	4230	300
XI	1424	931	7295	65360	3240	4186	4393	12093	4262	294
XII	1419	907	6982	64789	3068	3999	4303	11744	4142	291
2010										
I	1429	912	7194	64249	3122	4060	4347	11921	4246	300
II	1426	893	7123	64562	3162	4011	4344	11893	4214	298
III	1419	901	7113	64600	3142	3986	4357	11605	4227	298
IV
V
VI
I-VI 2010/I-V 2009

¹⁾ Vidi metodološka objašnjenja na strani 47¹⁾ See methodological explanation on page 47

NEZAPOSLENA LICA¹⁾ / UNEMPLOYED PERSONS¹⁾

	Stanje krajem perioda / Situation at the end of the period						U toku perioda / In the middle of the period		
	lica koja traže zaposlenje ²⁾ ukupno <i>Persons looking for job Total</i>	nezaposlen a lica koja prvi put traže zaposlenje <i>Unemployed persons first time looking for job</i>	nezaposlena lica bez kvalifikacija <i>Unqualified unemployed persons</i>	lica koja primaju novčanu naknadu ³⁾ <i>Persons receiving unemployment benefits</i>	nezaposlene žene <i>unemployed women</i>		prijavilo se za zapošljavanje ⁴⁾ <i>Reported for employment</i>	zaposleni prema evidenciji Zavoda za zapošljavanje Crne Gore <i>Employees according to the records of Employment Agency of Montenegro</i>	prestanak vođenja evidencije ⁵⁾ <i>Records stopped to be kept</i>
					Svega <i>Total</i>	bez kvalifikacija <i>Unqualified</i>			
Ø 2006	43190	14855	11550	7833	19949	4720	2630	1955	3581
Ø 2007	34396	10069	8838	8654	15513	3414	2187	2658	2911
Ø 2008	29514	7375	7823	9507	13193	2925	2090	2261	2386
Ø 2009	28387	6382	7392	12451	12756	2757	2102	1228	2038
Ø I - VI 2009	28488	6438	7648	12411	12661	2872	2007	1378	2262
Ø I - VI 2010	32239	6826	8017	...	14350	2922	2172	...	2066
2009									
VI	27133	5929	7135	12644	12038	2638	1807	1950	2545
VII	27048	6012	6973	12530	12000	2535	1915	1504	2021
VIII	26844	6023	6838	12273	12096	2510	1462	841	1740
IX	27313	6208	6803	12387	12512	2548	2279	1089	1872
X	28731	6442	7196	12372	13200	2691	2704	1354	1586
XI	29607	6651	7429	12975	13596	2776	2426	891	1669
XII	30169	6618	7573	12408	13704	2786	2393	787	1993
2010									
I	31055	6550	7792	13102	13986	2857	2113	549	1440
II	32375	6757	8102	12499	14431	2958	2676	534	1417
III	33117	6908	8277	13849	14705	3033	2581	511	1821
IV	33188	7034	8253	13569	14724	3021	2157	906	2185
V	32377	6957	7981	13793	14352	2890	1716	1271	2661
VI	31324	6751	7694	...	13902	2771	1790	...	2870
I-VI 2010/I-VI 2009	113.2	106.0	104.8	...	113.3	101.7	108.2	...	91.3

¹⁾ SOURCE: Employment Agency of Montenegro¹⁾ IZVOR: Zavod za zapošljavanje Crne Gore²⁾ Shodno članu 4 Zakona o zapošljavanju („Sl.list RCG”, br. 5/02)³⁾ Shodno članu 48 Zakona o zapošljavanju⁴⁾ Nezaposlene osobe koje su se tokom izvještajnog mjeseca prijavile na evidenciju Zavoda za zapošljavanje⁵⁾ Shodno članu 86 Zakona o zapošljavanju²⁾ According to the article 4 of the Law on Employment

(„Official Gazette of RoM”, No. 5/02 and 79/04)

³⁾ According to the Article 48 of the Law on Employment⁴⁾ Unemployed persons who in the reference month reported to the records of the Employment Agency of Montenegro⁵⁾ According to the Article 86 of the Law on Employment

PROSJEČNE ZARADE(BRUTO) PO SEKTORIMA DJELATNOSTI
AVERAGE GROSS WAGES BY ACTIVITY SECTORS

u EUR	Ukupno <i>Total</i>	PO SEKTORIMA / BY ACTIVITY SECTORS							in EUR
		poljoprivreda, šumarstvo i vodoprivreda <i>Agriculture, forestry and water supply</i>	ribarstvo <i>Fishing</i>	vađenje ruda i kamena <i>Mining and quarrying</i>	prerađivačka industrija <i>Manufacturing</i>	proizvodnja električne energije <i>Electricity supply</i>	građevinarstvo <i>Construction</i>	trgovina na veliko i malo, opravka <i>Wholesale and retail trade, repair</i>	
Ø 2007	497	446	196	725	530	701	430	301	
Ø 2008	609	584	197	833	615	783	519	345	
Ø 2009	643	682	213	776	613	829	554	375	
Ø I - VI 2009	648	652	221	793	618	808	565	376	
Ø I - VI 2010	702	839	287	957	665	1038	602	428	
2009									
VI	648	685	201	775	608	801	520	376	
VII	636	665	184	718	597	895	550	379	
VIII	641	722	195	731	611	882	543	392	
IX	631	760	206	717	598	812	551	362	
X	633	753	194	731	600	815	547	368	
XI	633	681	199	794	596	834	524	369	
XII	653	684	253	869	639	849	543	374	
2010									
I	702	929	346	1030	664	976	613	416	
II	691	858	333	1057	658	1011	634	449	
III	693	769	301	852	674	979	624	439	
IV	693	821	348	880	662	1000	579	419	
V	727	836	190	940	642	1264	567	432	
VI	706	832	148	911	697	998	595	418	
I-VI 2010/I-VI 2009	108.3	128.7	129.9	120.7	107.6	128.5	106.5	113.8	

/nastavak/

/ continued /

	PO SEKTORIMA / BY ACTIVITY SECTORS							
	hoteli i restorani <i>Hotels and restaurants</i>	saobraćaj, skladištenje i veze <i>Transport, storage and communications</i>	finansijsko posredovanje <i>Financial activities</i>	aktivnosti u vezi s nekretninama <i>Real estate activities, renting</i>	državna uprava i obav. socijalno osiguranje <i>Public administration and social insurance</i>	obrazovanje <i>Education</i>	zdravstveno i socijalno osiguranje <i>Health and social work</i>	ostale komunalne, društvene i lične usluge <i>Other community, social & personal service activities</i>
Ø 2007	388	659	1156	438	506	433	427	431
Ø 2008	445	757	1268	531	669	570	576	532
Ø 2009	455	848	1248	571	673	595	655	562
Ø I - VI 2009	473	851	1269	575	682	595	651	568
Ø I - VI 2010	539	910	1300	628	678	630	677	593
2009								
VI	472	895	1341	597	685	594	674	551
VII	461	830	1201	587	675	591	658	561
VIII	448	818	1204	596	663	585	669	570
IX	423	886	1198	589	662	593	654	566
X	419	799	1224	559	659	594	565	547
XI	447	860	1236	515	659	599	653	543
XII	454	885	1300	563	658	602	662	548
2010								
I	522	862	1276	606	691	606	680	599
II	540	876	1184	623	661	609	663	563
III	557	866	1267	616	683	637	676	578
IV	562	864	1283	634	678	639	676	625
V	524	1096	1359	632	676	643	681	592
VI	526	908	1411	655	680	645	685	602
I-VI 2010/I-VI 2009	114.0	106.9	102.4	109.2	99.4	105.9	104.0	104.4

PROSJEČNE ZARADE BEZ POREZA I DOPRINOSA (NETO) PO SEKTORIMA DJELATNOSTI
AVERAGE WAGES WITHOUT TAXES AND CONTRIBUTIONS (NET) BY ACTIVITY SECTOR

u EUR	in EUR							
	Ukupno <i>Total</i>	PO SEKTORIMA / BY ACTIVITY SECTORS						
		poljoprivreda, šumarstvo i vodoprivreda <i>Agriculture, forestry and water supply</i>	ribarstvo <i>Fishing</i>	vađenje ruda i kamenarstva <i>Mining and quarrying</i>	prerađivačka industrija <i>Manufacturing</i>	proizvodnja elekt. energije <i>Electricity supply</i>	građevinarstvo <i>Construction</i>	trgovina na veliko i malo, opravka <i>Wholesale and retail trade, repair</i>
Ø 2007	338	305	140	493	358	469	295	208
Ø 2008	416	398	141	574	418	530	353	242
Ø 2009	463	485	159	558	441	593	400	273
Ø I - VI 2009	466	463	164	570	445	578	407	273
Ø I - VI 2010	470	562	192	642	446	696	404	287
2009								
VI	466	487	150	557	438	574	376	273
VII	457	474	138	515	430	641	397	275
VIII	461	516	146	525	440	631	391	285
IX	454	543	154	516	430	581	397	263
X	456	537	145	526	432	584	395	268
XI	456	485	149	572	430	598	378	269
XII	470	488	189	625	462	607	392	272
2010								
I	471	622	232	690	445	654	411	279
II	463	575	223	709	441	678	425	301
III	465	516	202	572	451	656	418	294
IV	465	550	233	590	444	670	388	281
V	487	560	127	630	430	847	380	290
VI	473	557	99	611	467	669	399	280
I-VI 2010/I-VI 2009	100.9	121.4	117.1	112.6	100.2	120.4	99.3	105.1

/nastavak/

/ continued /

	PO SEKTORIMA / BY ACTIVITY SECTORS							
	hoteli i restorani <i>Hotels and restaurants</i>	saobraćaj, skladištenje i veze <i>Transport, storage and communications</i>	financijsko posredovanje <i>Financial activities</i>	aktivnosti u vezi s nekretnostima <i>Real estate activities, renting</i>	državna uprava i obav. socijalno osiguranje <i>Public administration and social insurance</i>	obrazovanje <i>Education</i>	zdravstveno i socijalno osiguranje <i>Health and social work</i>	ostale komunalne, društvene i lične usluge <i>Other community, social & personal service activities</i>
Ø 2007	264	439	770	299	344	295	296	296
Ø 2008	307	513	854	363	454	388	395	370
Ø 2009	330	607	891	412	483	428	473	405
Ø I - VI 2009	342	608	906	415	490	428	471	408
Ø I - VI 2010	362	610	874	421	454	422	454	397
2009								
VI	342	641	956	432	492	427	487	397
VII	334	594	858	424	485	425	475	405
VIII	325	586	861	430	477	421	483	412
IX	307	635	855	425	476	427	473	409
X	304	573	874	403	473	427	474	396
XI	324	617	884	371	473	431	471	393
XII	329	635	929	406	473	434	478	397
2010								
I	351	578	858	407	463	407	456	401
II	363	587	795	418	443	408	445	378
III	375	580	850	413	458	427	453	388
IV	378	579	862	425	454	428	453	419
V	352	734	913	424	453	431	457	397
VI	354	609	948	439	456	432	459	403
I-VI 2010/I-VI 2009	105.8	100.3	96.5	101.4	92.7	98.6	96.4	97.3

INDEKSI PROSJEČNIH ZARADA (BRUTO) PO SEKTORIMA DJELATNOSTI
INDICES OF AVERAGE GROSS WAGES BY ACTIVITY SECTOR
Ø 2009=100

	Ukupno <i>Total</i>	PO SEKTORIMA / BY ACTIVITY SECTORS						
		poljoprivreda, šumarstvo i vodoprivreda <i>Agriculture, forestry and water supply</i>	ribarstvo <i>Fishing</i>	vadenje ruda i kamena <i>Mining and quarrying</i>	prerađivačka industrija <i>Manufacturing</i>	proizvodnja električne energije <i>Electricity supply</i>	građevinarstvo <i>Construction</i>	trgovina na veliko i malo, opravka <i>Wholesale and retail trade, repair</i>
Ø 2007	81.6	76.4	99.5	87.0	86.2	89.5	82.9	87.2
Ø 2008	89.8	82.1	88.7	102.9	94.8	89.4	88.2	88.6
Ø 2009	100.0	100.0	100.0	100.0	100.0	100.0	100.0	100.0
Ø I - VI 2009	100.8	95.6	103.7	102.2	100.8	97.5	102.0	100.3
Ø I - VI 2010	109.2	123.0	134.7	123.3	108.5	125.2	108.7	114.1
2009								
VI								
VII	98.9	97.5	86.4	92.5	97.4	108.0	99.3	101.1
VIII	99.6	105.9	91.6	94.2	99.7	106.4	98.0	104.5
IX	98.1	111.4	96.7	92.4	97.5	97.9	89.5	96.5
X	98.4	110.4	91.1	94.2	97.9	98.3	98.7	98.1
XI	98.4	99.8	93.4	102.3	97.2	100.6	94.6	98.4
XII	101.5	100.3	118.8	112.0	104.2	102.4	98.0	99.7
2010								
I	109.2	136.2	162.4	132.7	108.3	117.7	110.6	110.9
II	107.5	125.8	156.3	136.2	107.3	121.9	114.4	119.7
III	107.8	112.8	141.3	109.8	109.9	118.1	112.6	117.1
IV	107.8	120.4	163.4	113.4	108.0	120.6	104.5	111.7
V	113.1	122.6	89.2	121.1	104.7	152.5	102.3	115.2
VI	109.8	122.0	69.5	117.4	113.7	96.1	107.4	111.5
I-VI 2010/I-VI 2009	108.3	128.7	129.9	120.7	107.6	128.5	106.5	113.8

/nastavak/

/ continued /

	PO SEKTORIMA / BY ACTIVITY SECTORS							
	hoteli i restorani <i>Hotels and restaurants</i>	saobraćaj, skladištenje i veze <i>Transport, storage and communications</i>	finansijsko posredovanje <i>Financial activities</i>	aktivnosti u vezi s nekretninama <i>Real estate activities, renting</i>	državna uprava i obav. socijalno osiguranje <i>Public administration and social insurance</i>	obrazo- vanje <i>Education</i>	zdravstveno i socijalno osiguranje <i>Health and social work</i>	ostale komunalne, društvene i lične usluge <i>Other community, social & personal service activities</i>
Ø 2007	87.2	87.1	91.2	82.5	75.6	76.0	74.1	81.0
Ø 2008	93.0	84.5	95.8	88.1	94.0	90.6	83.5	91.4
Ø 2009	100.0	100.0	100.0	100.0	100.0	100.0	100.0	100.0
Ø I - VI 2009	104.0	100.3	101.7	100.7	101.3	100.0	99.4	101.1
Ø I - VI 2010	118.5	107.3	104.2	110.0	100.7	105.9	103.4	105.5
2009								
VI	103.7	105.5	107.4	104.5	101.8	99.8	102.9	98.0
VII	101.3	97.9	96.2	102.8	100.3	99.3	100.5	99.8
VIII	98.5	96.5	96.5	104.4	98.5	98.3	102.1	101.4
IX	92.7	104.5	96.0	103.1	98.4	99.7	99.8	100.7
X	92.1	94.2	98.1	97.9	97.9	99.8	86.3	97.3
XI	98.2	101.4	99.1	90.2	97.9	100.7	99.7	96.6
XII	99.8	104.3	104.2	98.6	97.8	101.2	101.7	97.5
2010								
I	114.7	101.6	102.2	106.1	102.7	101.8	103.8	106.6
II	118.7	103.3	94.9	109.1	98.2	102.3	102.2	100.2
III	122.4	102.1	101.5	107.9	101.5	107.1	103.2	102.8
IV	123.5	101.9	102.8	111.0	100.7	107.4	103.2	111.2
V	115.2	129.2	108.9	110.7	100.4	108.1	104.0	105.3
VI	115.6	107.1	113.1	114.7	101.0	108.4	104.6	107.1
I-VI 2010/I-VI 2009	114.0	106.9	102.4	109.2	99.4	105.9	104.0	104.4

INDEKSI PROSJEČNIH ZARADA BEZ POREZA I DOPRINOSA (NETO) PO SEKTORIMA DJELATNOSTI
INDICES OF AVERAGE WAGES WITHOUT TAXES AND CONTRIBUTIONS (NET) BY ACTIVITY SECTOR

Ø 2009=100

	Ukupno <i>Total</i>	PO SEKTORIMA / BY ACTIVITY SECTORS						
		poljoprivreda, šumarstvo i vodoprivreda <i>Agriculture, forestry and water supply</i>	ribarstvo <i>Fishing</i>	vađenje ruda i kamena <i>Mining and quarrying</i>	prerađivačka industrija <i>Manufacturing</i>	proizvodnja električne energije <i>Electricity supply</i>	građevni- narstvo <i>Construction</i>	trgovina na veliko i malo opravka <i>Wholesale and retail trade, repair</i>
Ø 2007	81.3	76.6	99.3	85.9	85.6	88.5	83.6	86.0
Ø 2008	89.8	82.1	88.7	102.9	94.8	89.4	88.2	88.6
Ø 2009	100.0	100.0	100.0	100.0	100.0	100.0	100.0	100.0
Ø I - VI 2009	100.6	95.5	103.1	102.1	100.9	97.5	101.7	100.0
Ø I - VI 2010	101.5	115.9	120.7	115.0	101.1	117.4	101.0	105.1
2009								
VI	100.6	100.4	94.3	99.8	99.3	96.8	94.0	100.0
VII	98.7	97.7	86.8	92.3	97.5	108.1	99.3	100.7
VIII	99.6	106.4	91.8	94.1	99.8	106.4	97.8	104.4
IX	98.1	112.0	96.9	92.5	97.5	98.0	99.3	96.3
X	98.5	110.7	91.2	94.3	98.0	98.5	98.9	98.2
XI	98.5	100.0	93.7	102.3	97.5	100.8	94.5	98.5
XII	101.5	100.0	118.9	112.0	104.8	102.4	98.0	99.6
2010								
I	101.7	128.2	145.9	123.7	100.9	110.3	102.8	102.2
II	99.1	118.6	140.3	127.1	100.0	114.3	106.3	110.3
III	100.4	106.4	127.0	102.5	102.3	110.6	104.5	107.7
IV	100.4	113.4	146.5	105.7	100.7	113.0	97.0	102.9
V	105.2	115.5	79.9	112.9	97.5	142.8	95.0	106.2
VI	102.2	114.8	62.3	109.5	105.9	112.8	99.7	102.6
I-VI 2010/I-VI 2009	100.9	121.4	117.1	112.6	100.2	120.4	99.3	105.1

/nastavak/

/ continued /

	PO SEKTORIMA / BY ACTIVITY SECTORS							
	hoteli i restorani <i>Hotels and restaurants</i>	saobraćaj, skladištenje i veze <i>Transport, storage and communications</i>	financijsko posred. <i>Financial activities</i>	aktivnosti u vezi s nekretninama <i>Real estate activities, renting</i>	državna uprava i obav. socijalno osiguranje <i>Public administration and social insurance</i>	obrazovanje <i>Education</i>	zdravstveno i socijalno osiguranje <i>Health and social work</i>	ostale komunalne, društvene i lične usluge <i>Other community, social & personal service activities</i>
Ø 2007	86.0	85.6	90.2	82.4	75.8	76.0	74.9	80.0
Ø 2008	93.0	84.5	95.8	88.1	94.0	90.7	83.5	91.4
Ø 2009	100.0	100.0	100.0	100.0	100.0	100.0	100.0	100.0
Ø I - VI 2009	103.6	100.2	101.7	100.7	101.4	100.0	99.6	100.7
Ø I - VI 2010	109.7	100.5	98.1	102.2	94.0	98.6	96.0	98.0
2009								
VI	103.6	105.6	107.3	104.9	101.9	99.8	103.0	98.0
VII	101.2	97.9	96.3	102.9	100.4	99.3	100.4	100.0
VIII	98.5	96.5	96.6	104.4	98.8	98.4	102.1	101.7
IX	93.0	104.6	96.0	103.2	98.6	99.8	100.0	101.0
X	92.1	94.4	98.1	97.8	97.9	99.8	100.2	97.8
XI	98.2	101.6	99.2	90.0	97.9	100.7	99.6	97.0
XII	99.7	104.6	104.3	98.5	97.9	101.4	101.1	98.0
2010								
I	106.4	95.2	96.3	98.8	95.9	95.1	96.4	99.0
II	110.0	96.7	89.2	101.5	91.7	95.3	94.1	93.3
III	113.6	95.5	95.4	100.2	94.8	99.8	95.8	95.8
IV	114.5	95.4	96.7	103.2	94.0	100.0	95.8	103.5
V	106.7	120.9	102.5	102.9	93.8	100.7	96.6	98.0
VI	107.3	100.3	106.4	106.5	94.4	100.9	97.0	99.5
I-VI 2010/I-VI 2009	105.8	100.3	96.5	101.4	92.7	98.6	96.4	97.3

PROSJEČNE ZARADE (BRUTO) PO OPŠTINAMA / AVERAGE GROSS WAGES BY MUNICIPALITY

u EUR	in EUR										
	Opštine / Municipalities										
	Andrijevica	Bar	Berane	Bijelo Polje	Budva	Danilovgrad	Žabljak	Kolašin	Kotor	Mojkovac	Nikšić
Ø 2007	398	445	407	406	536	419	398	437	498	422	555
Ø 2008	492	545	531	517	642	514	539	552	612	530	642
Ø 2009	531	563	561	531	626	533	583	605	671	571	621
Ø I - VI 2009	528	569	566	535	661	552	572	605	580	566	622
Ø I - VI 2010	602	608	593	572	721	567	636	641	696	609	692
2009											
VI	534	561	566	534	603	536	605	639	678	642	606
VII	531	553	550	534	616	496	556	656	662	573	610
VIII	529	555	550	520	592	547	574	565	664	572	621
IX	521	543	553	519	593	548	564	574	652	568	579
X	531	554	540	535	573	496	598	586	666	572	642
XI	531	571	557	529	591	501	622	605	656	597	607
XII	562	565	580	532	628	515	646	634	672	578	663
2010											
I	635	617	635	571	755	564	609	636	738	610	736
II	599	613	576	556	731	566	613	653	711	603	722
III	600	594	587	573	717	595	604	657	678	626	709
IV	608	588	607	577	730	565	662	662	666	535	641
V	608	619	585	587	714	582	701	604	691	655	708
VI	572	615	580	570	691	531	622	644	706	628	633
I-VI 2010/I-VI 2009	114.0	106.8	104.8	106.9	109.1	102.7	111.2	105.9	120.0	107.6	111.2

/nastavak/

/continued/

	Opštine / Municipalities									
	Plav	Plužine	Pljevlja	Podgorica	Rožaje	Tivat	Ulcinj	Herceg Novi	Cetinje	Šavnik
Ø 2007	376	444	492	548	456	486	354	408	366	420
Ø 2008	493	549	614	676	561	575	460	499	442	526
Ø 2009	537	654	667	727	606	639	488	504	573	546
Ø I - VI 2009	531	636	677	730	606	642	483	519	580	539
Ø I - VI 2010	584	756	750	781	651	749	538	543	612	612
2009										
VI	518	590	692	733	619	631	488	525	583	542
VII	519	655	660	726	610	605	481	500	557	530
VIII	547	669	660	736	598	597	532	499	572	550
IX	545	659	658	723	584	626	455	503	572	547
X	536	635	656	715	608	631	497	479	569	564
XI	547	791	645	710	616	661	481	487	563	552
XII	564	655	655	736	621	708	511	475	563	573
2010										
I	583	923	699	774	654	779	493	496	618	581
II	583	704	725	749	646	740	532	538	611	598
III	598	667	731	758	655	719	558	550	627	615
IV	578	720	763	783	654	755	513	537	601	627
V	585	836	803	823	648	774	590	539	637	643
VI	579	774	775	801	651	736	541	596	585	601
I-VI 2010/I-VI 2009	110.0	118.9	110.8	107.0	107.4	116.7	111.4	104.6	105.5	113.5

PROSJEČNE ZARADE BEZ POREZA I DOPRINOSA (NETO) PO OPŠTINAMA
AVERAGE WAGES WITHOUT TAXES AND CONTRIBUTIONS (NET) BY ACTIVITY SECTOR

u EUR	Opštine / Municipalities											in EUR
	Andrijevica	Bar	Berane	Bijelo Polje	Budva	Danilovgrad	Žabljak	Kolašin	Kotor	Mojkovac	Nikšić	
Ø 2007	271	302	278	277	361	285	272	296	339	288	377	
Ø 2008	336	371	361	353	439	352	368	376	419	361	439	
Ø 2009	382	405	404	383	451	384	420	435	484	411	448	
Ø I - VI 2009	380	408	408	385	475	396	412	435	491	407	449	
Ø I - VI 2010	404	407	397	384	484	380	426	430	466	408	464	
2009												
VI	384	405	409	386	434	387	436	460	491	462	438	
VII	383	400	397	386	444	359	400	472	478	414	439	
VIII	381	399	396	376	428	394	413	407	479	412	448	
IX	375	392	401	375	428	395	405	413	471	408	418	
X	382	399	389	387	414	359	430	422	478	411	464	
XI	383	412	401	382	429	361	447	435	473	430	439	
XII	404	408	419	385	455	372	465	456	485	416	478	
2010												
I	425	413	425	383	507	378	408	426	494	409	493	
II	402	411	386	373	490	380	411	438	476	404	483	
III	402	398	394	384	483	399	405	440	454	419	476	
IV	407	394	407	387	491	379	444	443	446	358	430	
V	407	414	392	394	479	391	470	405	463	439	474	
VI	383	413	389	382	464	356	417	432	473	421	424	
I-VI 2010/I-VI 2009	106.3	99.7	97.3	99.7	101.9	95.9	103.4	98.8	94.9	100.2	103.3	

/nastavak/

/ continued /

	Opštine / Municipalities									
	Plav	Plužine	Pljevlja	Podgorica	Rožaje	Tivat	Ulcinj	Herceg Novi	Cetinje	Šavnik
Ø 2007	255	301	334	371	310	331	243	281	251	285
Ø 2008	332	377	420	460	382	392	315	344	300	358
Ø 2009	386	469	479	522	436	460	353	364	413	393
Ø I - VI 2009	382	457	486	523	436	462	349	374	418	388
Ø I - VI 2010	392	507	503	524	437	502	361	364	410	410
2009										
VI	377	422	496	526	446	455	353	379	420	390
VII	375	471	475	521	440	439	347	361	402	381
VIII	394	480	475	529	430	429	383	362	412	396
IX	392	473	473	519	421	450	329	363	412	394
X	386	455	472	513	437	454	359	348	411	406
XI	394	566	465	509	443	475	348	352	405	398
XII	406	470	472	529	447	512	368	344	405	413
2010										
I	390	618	469	519	438	522	331	332	414	389
II	391	472	486	502	433	496	357	360	410	401
III	401	447	489	508	439	482	374	368	420	412
IV	387	483	512	525	440	507	344	360	403	420
V	392	560	538	551	435	519	396	362	427	431
VI	388	518	520	537	436	494	363	400	392	403
I-VI 2010/I-VI 2009	102.6	110.9	103.5	100.2	100.2	108.7	103.4	97.3	98.1	105.7

INDEKSI CIJENA PROIZVOĐAČA INDUSTRIJSKIH PROIZVODA
PRODUCERS PRICE INDICES FOR INDUSTRIAL PRODUCTS

	2008 2007	2009 2008	I-VI 2010 I-VI 2009	Ø 2009 = 100					
				2009					
				VI	VII	VIII	IX	X	XI
Ukupno	114.0	96.1	97.1	98.5	96.9	97.6	98.6	99.3	99.7
Vadenje ruda i kamena	114.0	102.7	93.1	100.2	99.6	99.6	99.6	99.5	100.3
Prerađivačka industrija	111.3	90.9	101.3	97.1	96.0	97.1	98.6	99.6	100.1
Proizvodnja el. energije, gasa i vode	121.4	108.5	86.5	101.5	98.5	98.5	98.5	98.5	98.5
Vadenje ruda i kamena	114.0	102.7	93.1	100.2	99.6	99.6	99.6	99.5	100.3
Vadenje energetskih sirovina	117.9	101.0	97.8	100.5	99.1	99.1	99.1	98.7	100.5
Vadenje kamenog uglja, lignita i treseta	117.9	101.0	97.8	100.5	99.1	99.1	99.1	98.7	100.5
Vadenje ostalih sirovina i materijala	110.9	104.0	89.6	100.0	100.0	100.0	100.0	100.0	100.0
Vadenje ruda metala	111.2	105.3	88.9	100.7	100.7	100.7	100.7	100.7	100.7
Vadenje ostalih ruda i kamena	109.9	98.1	92.2	97.1	97.1	97.1	97.1	97.1	97.1
Prerađivačka industrija	111.3	90.9	101.3	97.1	96.0	97.1	98.6	99.6	100.1
Prehrambeni proizvodi, pića i duvan	113.0	103.4	97.8	100.6	100.1	101.1	99.7	99.6	99.7
Proizv. prehrambenih proizvoda i pića	115.2	101.9	97.5	100.6	100.1	100.1	99.6	99.5	99.7
Proizvodnja duvanskih proizvoda	100.0	114.2	100.0	100.0	100.0	100.0	100.0	100.0	100.0
Proizvodnja tekstila i tekstilnih proizvoda	104.6	98.2	101.8	99.0	93.0	97.7	96.8	96.8	98.7
Proizvodnja tekstilnih prediva i tkanina	101.2	99.9	99.3	98.6	98.6	108.5	108.7	108.7	90.2
Proizvodnja odjevnih predmeta i krzna	111.1	95.0	102.2	99.0	92.1	96.0	94.9	94.9	100.0
Proizvodnja kože i predmeta od kože	101.4	104.7	100.0	100.0	100.0	100.0	100.0	100.0	100.0
Proizvodnja predmeta od kože i obuće	101.4	104.7	100.0	100.0	100.0	100.0	100.0	100.0	100.0
Prerada drveta i proizvoda od drveta	109.6	104.1	89.6	93.6	93.9	96.2	99.2	99.2	99.7
Proizvodi od drveta, plute i slično	109.6	104.1	89.6	93.6	93.9	96.2	99.2	99.2	99.7
Proizvodnja papira, izdavanje i štampanje	118.7	99.7	99.0	100.1	100.1	100.1	100.1	99.8	99.8
Proizv. celuloze, papira i proizv. od papira	100.7	101.1	99.1	100.2	100.2	100.2	100.2	99.3	99.3
Izdavanje, štampanje i reprodukcija	127.3	99.2	99.0	100.0	100.0	100.0	100.0	100.0	100.0
Prerada hemijskih proizvoda i vlakana	108.8	113.0	98.1	103.4	102.8	102.8	103.3	103.2	97.1
Proizvodnja hemikalija i hem. proizvoda	108.8	113.0	98.1	103.4	102.8	102.8	103.3	103.2	97.1
Proizvodnja proizv. od gume i plastike	103.5	104.9	101.3	100.7	100.7	100.7	100.7	100.7	100.7
Proizvodnja proizv. od gume i plastike	103.5	104.9	101.3	100.7	100.7	100.7	100.7	100.7	100.7
Proizv. proizvoda od ost. nemetalnih min.	105.8	99.0	100.2	99.9	99.9	99.9	99.9	99.9	99.9
Proizv. proizvoda od ost. nemet. minerala	105.8	99.0	100.2	99.9	99.9	99.9	99.9	99.9	99.9
Proizv. osn. metala i metalnih proizvoda	111.5	76.2	106.9	93.9	92.0	94.1	96.9	99.2	100.9
Proizvodnja osnovnih metala	112.0	73.9	107.5	93.7	91.4	93.6	96.7	98.7	100.6
Proizvodnja metal. proizv., osim mašina	101.3	110.1	96.8	96.9	100.7	100.7	100.3	106.4	105.4
Proizvodnja mašina i uređaja, ostala	98.9	99.3	83.8	100.8	97.1	97.1	100.8	100.8	99.6
Proizvodnja mašina i uređaja, ostala	98.9	99.3	83.8	100.8	97.1	97.1	100.8	100.8	99.6
Prerađivačka industrija, ostala	113.7	112.3	92.5	99.6	98.7	98.7	98.7	98.7	98.7
Proizv. namještaja i raznovrsnih proizvoda	113.7	112.3	92.5	99.6	98.7	98.7	98.7	98.7	98.7
Proizvodnja el. energije, gasa i vode	121.4	108.5	86.5	101.5	98.5	98.5	98.5	98.5	98.5
Proizv. električne energije, gasa i vode	121.4	108.5	86.5	101.5	98.5	98.5	98.5	98.5	98.5
Proizv. el. energije, gasa i vode	121.4	108.5	86.5	101.5	98.5	98.5	98.5	98.5	98.5
Izabrane grupe proizvoda									
Elementi i materijal za ugrađivanje u građevinarstvu	107.0	107.8	99.3	98.9	99.7	101.0	101.8	103.2	103.2

INDEKSI CIJENA PROIZVOĐAČA INDUSTRIJSKIH PROIZVODA
PRODUCERS PRICE INDICES FOR INDUSTRIAL PRODUCTS

Ø 2009 = 100							
2009	2010						
XII	I	II	III	IV	V	VI	
100.4	97.4	96.7	96.1	97.6	101.3	100.6	Total
99.1	98.4	98.4	98.1	97.5	84.2	84.2	Mining and quarrying
101.2	100.7	99.7	98.9	101.1	108.0	106.9	Manufacturing
98.5	87.8	87.8	87.8	87.8	87.8	87.8	Electricity, gas and water supply
99.1	98.4	98.4	98.1	97.5	84.2	84.2	Mining and quarrying
100.5	98.9	98.9	98.9	97.6	97.6	97.6	Extraction of energy producing materials
100.5	98.9	98.9	98.9	97.6	97.6	97.6	Mining of coal and lignite, extraction of peat
98.1	98.1	98.1	97.4	97.4	74.0	74.0	Mining and quarr. exc. energy produc. materials
98.3	98.3	98.3	98.3	98.3	69.4	69.4	Mining of metal ores
97.1	97.1	97.1	93.7	93.7	93.7	93.7	Other mining and quarrying
101.2	100.7	99.7	98.9	101.1	108.0	106.9	Manufacturing
99.6	99.0	98.6	98.4	97.3	97.5	97.5	Manuf. of food produc., beverages and tobacco
99.5	98.9	98.4	98.2	97.0	98.1	97.2	Manufacture of food products and beverages
100.0	100.0	100.0	100.0	100.0	100.0	100.0	Manufacture of tobacco products
98.7	103.1	104.9	101.6	100.5	103.5	115.9	Manufacture of textile and textile products
90.2	99.2	99.2	99.2	99.2	99.2	95.1	Manufacture of textiles
100.0	103.7	105.8	101.9	100.7	104.1	119.1	Manufacture of wearing apparel and fur
100.0	100.0	100.0	100.0	100.0	100.0	100.0	Manufacture of leather and leather products
100.0	100.0	100.0	100.0	100.0	100.0	100.0	Manufac. of leather products and footwear
99.4	99.7	97.6	92.6	86.8	85.9	86.0	Manufacture of wood and wood products
99.4	99.7	97.6	92.6	86.8	85.9	86.0	Manufac. of wood product, cork and similar
99.8	99.8	99.9	98.7	98.7	98.7	98.6	Manufacture of paper, publishing and printing
99.3	99.3	99.3	99.3	99.3	99.3	99.1	Manufac. of pulp, paper and paper products
100.0	100.0	100.0	98.5	98.5	98.5	98.5	Publishing, printing and reproduction
95.5	95.5	97.8	97.8	97.6	97.6	97.6	Manufacture of chemical products and fibres
95.5	95.5	97.8	97.8	97.6	97.6	97.6	Manuf. of chemicals and chemical products
100.7	100.7	100.7	100.7	100.7	100.7	100.7	Manufacture of rubber and plastic products
100.7	100.7	100.7	100.7	100.7	100.7	100.7	Manufacture of rubber and plastic products
101.3	101.3	101.3	101.3	101.3	101.3	94.0	Manufacture of other non-metal minerals
101.3	101.3	101.3	101.3	101.3	101.3	94.0	Manuf. of other non-metal mineral products
103.6	102.7	101.4	101.4	107.4	122.4	120.1	Manufac. of basic metals and metal products
103.4	102.9	101.5	101.5	108.6	125.0	122.5	Manufacture of basic metals
105.4	101.1	99.5	99.7	91.0	85.8	85.8	Manuf. of metal products except machinery
99.6	99.6	81.5	81.5	81.5	81.5	81.5	Manufacture of other machinery and equipment
99.6	99.6	81.5	81.5	81.5	81.5	81.5	Manuf. of other machinery and equipment
98.7	98.7	96.6	91.6	100.0	92.5	90.6	Manufacturing n.e.c.
98.7	98.7	96.6	91.6	100.0	92.5	90.6	Manufac. of furniture and related products
98.5	87.8	87.8	87.8	87.8	87.8	87.8	Electricity, gas and water supply
98.5	87.8	87.8	87.8	87.8	87.8	87.8	Electricity, gas and water supply
98.5	87.8	87.8	87.8	87.8	87.8	87.8	Electricity, gas and water supply
							Chosen groups of products
103.3	102.3	100.8	98.6	95.2	93.5	93.5	Elements and material for building in the construction

INDEKSI POTROŠAČKIH CIJENA PO GRUPAMA PROIZVODA
RETAIL BY GROUPS OF PRODUCTS

	2009 2008	I-VI 2010 I-VI 2009	Ø 2009 = 100					
			2009					
			VI	VII	VIII	IX	X	XI
Hleb i žitarice	102.8	99.6	100.3	100.3	100.3	100.2	100.0	100.1
Meso	106.7	100.7	100.1	100.4	100.3	100.5	100.7	100.7
Riba	104.7	114.7	96.7	97.2	99.9	105.2	107.8	107.8
Mlijeko, sir i jaja	108.7	100.3	99.5	99.5	99.9	100.3	100.4	100.5
Ulje i masti	83.6	81.3	100.1	99.3	98.9	98.6	88.9	88.0
Voće	95.7	94.6	107.4	107.7	105.6	99.6	95.4	88.0
Povrće	99.8	95.8	96.6	84.4	89.1	90.4	92.7	94.2
Šećer, med, pekmez i ost. slat.	103.1	104.7	98.6	99.7	102.0	101.7	102.5	102.1
Ostali prehrambeni proizvodi	99.7	97.8	100.7	100.7	100.0	99.7	100.2	99.4
Bezalkoholna pića	98.5	96.2	99.9	100.1	99.8	98.8	99.5	99.9
Alkoholna pića	107.3	100.4	99.2	99.4	101.2	101.2	101.3	101.3
Duvan	108.4	103.0	98.6	98.6	101.7	101.7	101.7	101.7
Materijal za odjeću	100.2	100.2	99.8	100.3	100.4	100.2	100.2	100.0
Odjeća	100.9	99.9	99.7	99.7	99.6	99.5	100.2	100.0
Ostalo za odjeću	100.8	96.8	99.3	99.3	99.3	99.4	99.4	99.9
Čišćenje i iznajmljivanje odjeće	115.8	102.6	102.1	102.1	102.1	102.1	102.1	102.1
Obuća	100.3	100.5	99.6	99.5	99.5	99.5	101.0	101.1
Popravka i iznajmljivanje obuće	102.7	101.8	100.6	100.6	100.6	100.6	100.6	100.6
Održavanje i popravke za stan	105.8	103.0	98.9	99.0	101.1	103.5	103.5	103.0
Snadbijevanje vodom	112.2	101.8	101.0	101.0	101.0	101.0	101.0	101.0
Elektr. energija, plin i ost. goriva	114.8	90.3	101.1	99.1	99.1	99.0	98.7	98.7
Namještaj i pokućstvo	90.3	91.6	98.2	98.2	97.1	96.5	96.2	95.8
Tekstilni proizvodi za kuću	101.2	104.5	100.5	100.5	100.1	100.1	100.1	100.3
Kućni aparati	98.9	93.1	100.1	99.4	98.3	97.8	97.0	96.4
Stakleno, stono posudje	99.1	95.2	100.1	100.1	100.1	99.9	99.9	99.4
Alati i oprema za kuću	99.2	95.8	99.9	99.9	99.9	99.6	99.5	98.9
Dobra i usluge za potrošnju	97.9	93.2	101.5	100.9	99.0	94.7	94.8	95.1
Zdravlje	102.7	100.9	99.7	99.8	99.7	99.7	99.7	99.7
Kupovina vozila	105.6	99.7	100.0	100.0	99.9	99.9	99.9	99.9
Oprema za održavanje vozila	89.8	124.1	98.7	96.6	111.2	107.6	107.6	110.1
Prevozne usluge	114.5	108.4	99.4	103.1	103.1	103.9	103.9	103.9
Komunikacije	103.7	100.1	100.0	100.0	100.0	100.1	100.1	100.1
Kultura i rekreacije	100.5	98.7	100.0	100.0	100.1	99.9	99.9	100.0
Obrazovanje	100.0	100.0	100.0	100.0	100.0	100.0	100.0	100.0
Restorani i hoteli	109.1	102.5	99.9	99.9	100.0	100.2	100.4	100.4
Ostala dobra i usluge	101.3	101.1	100.2	100.2	100.2	100.3	100.2	100.1

INDEKSI POTROŠAČKIH CIJENA PO GRUPAMA PROIZVODA
RETAIL BY GROUPS OF PRODUCTS

Ø 2009 = 100							
2009	2010						
XII	I	II	III	IV	V	VI	
99.8	99.4	99.4	99.4	99.5	99.5	99.6	Breads and cereals
100.8	100.2	100.1	100.2	100.2	100.1	99.9	Meat
107.8	109.2	109.2	110.3	110.3	109.3	110.7	Fish
100.7	100.1	99.9	100.0	100.2	100.0	100.4	Milk, cheese, eggs
88.0	87.2	87.4	87.4	83.9	84.1	89.2	Oils and fats
86.9	91.5	92.9	93.6	95.4	101.5	108.5	Fruit
98.2	102.9	105.3	108.1	110.1	106.1	90.9	Vegetables
102.5	102.6	102.6	102.8	102.9	102.7	103.7	Sugar, honey, jam, etc.
99.3	98.5	97.9	97.7	97.9	97.9	97.6	Other alimentary products
99.4	96.3	96.6	96.6	96.6	96.5	96.7	Non-alcoholic beverages
101.4	101.6	101.6	100.1	98.9	98.5	98.3	Alcoholic beverages
101.7	101.7	101.7	101.7	101.7	101.7	101.7	Tobacco
100.0	99.7	100.0	100.0	100.0	100.2	100.2	Material for clothes
99.7	100.4	100.2	100.2	100.1	99.8	99.8	Clothes
99.8	97.3	97.3	97.3	97.3	97.3	97.2	Other for clothes
102.1	102.2	101.3	100.4	100.4	99.3	99.3	Cleaning and renting of clothes
100.6	100.3	100.3	100.3	100.3	100.3	100.3	Footwear
100.6	101.2	101.2	101.2	101.2	101.2	101.1	Repairing and renting of footwear
103.6	101.7	102.0	100.1	100.1	100.0	100.0	Maintaince and reparation of flats
101.0	100.8	100.8	100.8	100.8	100.8	100.8	Water
98.7	91.2	91.2	91.3	91.3	91.3	91.3	Electricity, petrol, and oth. fuels
95.5	95.0	95.1	94.8	94.7	94.5	94.6	Furniture and household furnish.
99.9	104.6	104.7	104.7	104.0	104.0	103.9	Textile products for house
95.3	96.3	96.0	95.6	95.3	95.0	95.0	Household aparatures
98.8	96.9	96.2	95.7	95.5	94.5	93.8	Glass, table ware
98.8	97.0	96.5	96.1	96.1	96.1	96.1	Tools and equipment for house
95.1	95.4	96.3	96.6	96.6	96.6	96.5	Goods and services for consumpt.
99.7	99.5	100.8	101.3	101.9	101.9	102.0	Health care
99.9	99.8	99.8	99.8	99.8	99.8	99.7	Buying of vehicles
110.1	112.5	111.1	115.4	117.1	117.4	117.4	Equip. for maintaining of vehicles
103.9	105.2	105.2	105.2	103.6	103.6	103.6	Transport services
100.0	100.0	100.0	100.0	100.0	100.0	100.0	Communications
100.0	99.0	99.1	98.8	98.6	98.4	98.3	Culture and recreations
100.0	100.0	100.0	100.0	100.0	100.0	100.0	Education
100.4	102.2	102.3	102.3	102.3	102.3	102.3	Restaurants and hotels
100.1	101.3	101.1	101.0	100.8	100.8	100.6	Other goods and services

INDEKSI POTROŠAČKIH CIJENA / CONSUMER PRICES INDEX

Ø 2009 = 100

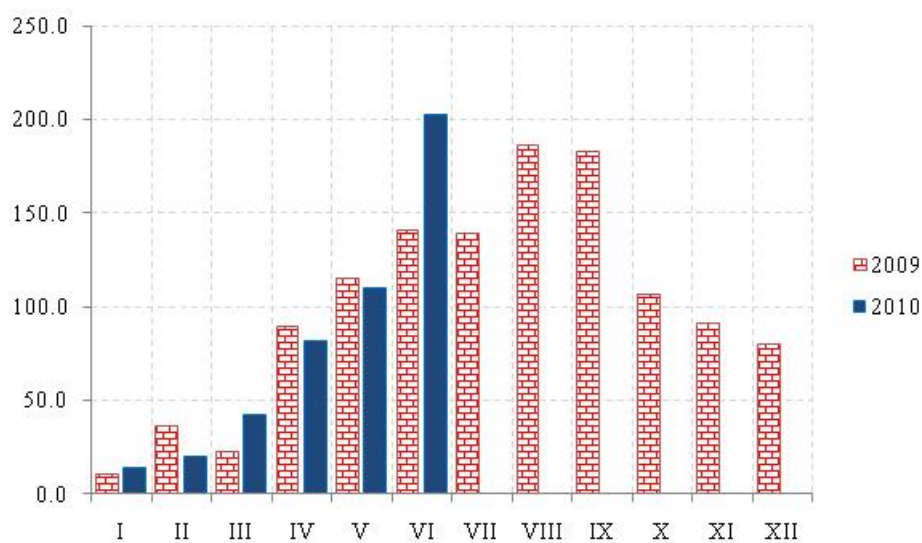
	Potrošačke cijene ukupno <i>Consumer prices- total</i>	Hrana i bezalkoholna pića <i>Food and non alcoholic beverage</i>	Alkoholna pića i duvan <i>Alcoholic beverages and tobacco</i>	Odjeća i obuća <i>Clothing and footwear</i>	Stanovanje <i>Renting</i>	Pokućstvo i oprema za kuću <i>Household furnishings</i>
2008	96.7	96.8	93.2	99.2	87.7	102.8
2009	100.0	100.0	100.0	100.0	100.0	100.0
Ø I - VI 2009	99.9	101.0	99.0	100.0	100.5	102.5
Ø I - VI 2010	100.3	99.8	100.9	100.1	93.6	96.8
2009						
VI	99.9	99.9	99.3	99.7	100.8	100.2
VII	99.3	98.7	99.4	99.6	99.4	99.8
VIII	100.5	99.3	101.2	99.6	99.5	98.6
IX	100.2	99.2	101.2	99.5	99.6	97.0
X	100.2	99.0	101.3	100.5	99.4	96.7
XI	100.2	98.7	101.3	100.5	99.5	96.6
XII	100.3	99.1	101.3	100.2	99.6	96..1
2010						
I	100.0	99.4	101.6	100.4	93.9	96.9
II	100.1	99.7	101.7	100.2	93.9	97.0
III	100.5	100.1	101.1	100.2	93.8	96.9
IV	100.6	100.3	100.6	100.2	93.5	96.7
V	100.5	100.2	100.4	100.0	93.5	96.6
VI	100.1	99.4	100.3	100.0	93.2	96.5
I-VI 2010/I-VI 2009	100.4	98.9	101.9	100.1	93.2	94.4

/ nastavak /

/ continued /

	Zdravlje <i>Health care</i>	Prevoz <i>Transport</i>	Komunikacije <i>Communications</i>	Kultura i rekreacija <i>Culture and recreation</i>	Obrazovanje <i>Education</i>	Restorani i hoteli <i>Restaurants and hotels</i>	Ostala dobra i usluge <i>Other goods and services</i>
2008	97.4	104.4	96.4	99.5	100.0	91.6	98.7
2009	100.0	100.0	100.0	100.0	100.0	100.0	100.0
Ø I - VI 2009	100.3	94.8	99.9	100.0	100.0	99.8	99.8
Ø I - VI 2010	101.2	109.9	100.0	98.7	100.0	102.3	100.9
2009							
VI	99.7	99.1	100.0	100.0	100.0	100.0	100.2
VII	99.8	99.1	100.0	100.0	100.0	100.0	100.2
VIII	99.7	107.3	100.0	100.0	100.0	100.0	100.2
IX	99.7	105.5	100.1	99.9	100.0	100.2	100.3
X	99.7	105.5	100.1	99.9	100.0	100.4	100.2
XI	99.7	107.0	100.1	100.0	100.0	100.4	100.1
XII	99.7	107.0	100.0	100.0	100.0	100.4	100.1
2010							
I	99.5	108.7	100.0	99.0	100.0	102.2	101.3
II	100.8	107.9	100.0	99.1	100.0	102.2	101.1
III	101.3	110.3	100.0	98.8	100.0	102.3	101.0
IV	101.9	110.7	100.0	98.6	100.0	102.3	100.8
V	101.9	110.9	100.0	98.4	100.0	102.3	100.8
VI	102.0	110.9	100.0	98.3	100.0	102.3	100.6
I-VI 2010/I-VI 2009	100.9	116.0	100.1	98.7	100.0	102.5	101.1

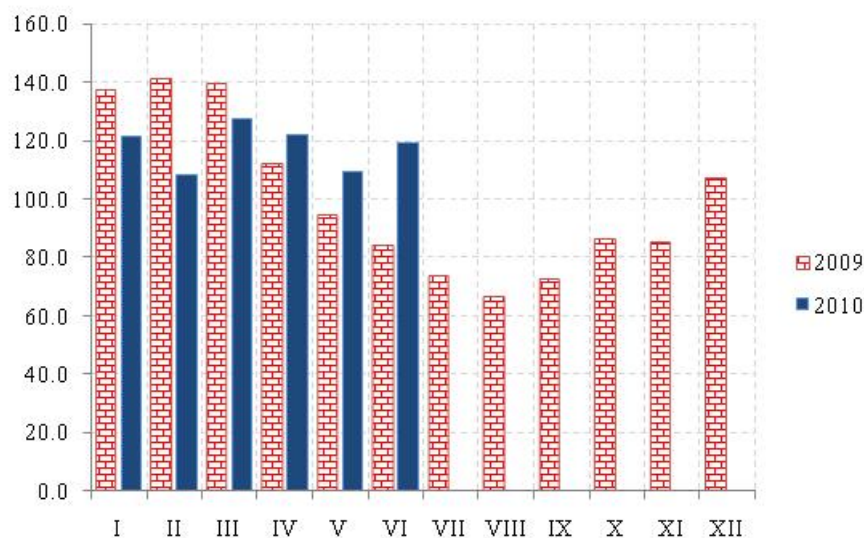
ŠUMARSTVO / FORESTRY



Ø 2009 = 100

	Indeks Index	Ukupno Total	Proizvedeni sortimenti, m³ / Production of forests assortments						
			Četinara / Conifers				Lišćara / Deciduous trees		
			trupci Saw logs	tehničko drvo Lumber	prostorno drvo Space wood	ogrijevno drvo Firewood	trupci Saw logs	prostorno drvo Space wood	ogrijevno drvo Firewood
2005	132.3	279228	166742	10156	11521	1949	47719	7460	33510
2006	152.1	325896	194057	11808	12798	1334	46736	15406	43754
2007	122.6	263787	151440	8878	12623	367	45000	14388	31091
2008	131.9	281260	160901	13090	17492	861	46467	9655	32794
2009	100.0	216546	128520	6525	10992	2149	29121	5748	33491
Ø I - VI 2009	69.0	11915	7886	491	849	22	1218	360	1089
Ø I - VI 2010	78.4	13627	8841	624	975	71	1403	256	1457
2009									
VI									
VII	139.0	25417	13671	666	1241	203	4612	368	4656
VIII	186.4	34251	18370	738	964	52	6531	338	7258
IX	182.9	33517	19225	816	1213	249	4762	660	6592
X	106.8	20156	11054	250	699	260	2935	919	4039
XI	91.4	16976	9469	609	1083	267	2171	759	2618
XII	79.7	14740	9419	501	699	985	800	544	1792
2010									
I	13.8	2337	1703	70	524	-	-	25	15
II	19.9	3170	2730	65	202	-	-	5	168
III	42.4	6970	5603	474	425	-	-	127	341
IV	81.2	13241	9744	961	1031	43	1115	137	210
V	110.3	20041	11415	828	944	91	2833	408	3522
VI	202.8	36001	21847	1346	2725	293	4471	832	4487
I-VI 2010/I-VI 2009	113.6	114.4	112.1	127.1	114.8	322.7	115.2	71.1	133.8

INDUSTRIJA / *INDUSTRY*
INDEKSI INDUSTRIJSKE PROIZVODNJE – po sektorima
INDICES OF INDUSTRIAL PRODUCTION – by sectors



Ø 2009= 100

	INDUSTRIJA Ukupno <i>INDUSTRY Total</i>	Vađenje ruda i kamena <i>Mining and quarrying</i>	Prerađivačka industrija <i>Manufacturing</i>	Proizvodnja električne energije, gasa i vode <i>Electricity, gas and water supply</i>
2005	148.9	81.3	168.7	103.8
2006	150.3	242.6	168.1	106.9
2007	150.4	246.4	183.5	77.7
2008	147.5	289.9	162.9	102.4
2009	100.0	100.0	100.0	100.0
Ø I - VI 2009	118.1	124.9	108.0	136.4
Ø I - VI 2010	118.0	122.6	88.0	173.6
2009				
VI	84.2	15.4	110.8	42.3
VII	73.8	16.5	99.5	32.3
VIII	66.7	26.2	93.1	22.1
IX	72.3	161.5	102.2	6.4
X	86.4	145.3	90.6	71.5
XI	85.0	45.6	76.0	106.3
XII	107.1	55.5	91.0	143.1
2010				
I	121.6	129.6	64.0	228.2
II	108.4	103.1	72.5	176.0
III	127.3	113.7	90.8	197.2
IV	121.9	143.5	98.5	163.2
V	109.5	96.5	92.0	143.8
VI	119.2	149.4	110.0	132.9
I-VI 2010/I-VI 2009	99.9	98.2	81.5	127.3

INDEKSI INDUSTRIJSKE PROIZVODNJE – po podsektorima
INDICES OF INDUSTRIAL PRODUCTION – by sub-sectors

Ø 2009 = 100

	Vađenje energetskih sirovina <i>Extraction of energy producing materials</i>	Vađenje ostalih sirovina i materijala <i>Mining and quarrying except energy producing materials</i>	Prehrambeni proizvodi, pića i duvan <i>Manufacture of food products, beverages and tobacco</i>	Proizvodnja tekstila i tekstilnih proizvoda <i>Manufacture of textile and textile products</i>
2005	136.1	371.9	111.3	855.1
2006	160.0	354.9	99.9	997.1
2007	125.1	412.0	99.2	921.3
2008	175.4	446.4	112.7	735.3
2009	100.0	100.0	100.0	100.0
Ø I - VI 2009	157.3	80.9	97.8	109.8
Ø I - VI 2010	169.3	59.0	85.8	82.9
2009				
VI	7.1	26.8	105.4	113.1
VII	9.4	26.2	117.8	112.7
VIII	26.2	26.2	118.2	92.6
IX	35.3	333.0	104.6	99.4
X	73.0	243.7	80.0	112.7
XI	58.0	28.7	82.6	52.1
XII	54.4	57.0	110.1	72.0
2010				
I	194.2	41.8	70.9	87.9
II	155.6	31.7	73.2	83.0
III	155.0	57.4	86.6	95.2
IV	190.4	79.6	86.7	68.1
V	109.6	78.7	93.8	85.3
VI	211.4	65.1	103.5	78.0
I-VI 2010/I-VI 2009	107.6	72.9	87.7	75.5

/nastavak/

/continued/

	Proizvodnja kože i predmeta od kože <i>Manufacture of leather and leather products</i>	Prerada drveta i proizvodi od drveta <i>Manufacture of wood and wood products</i>	Proizvodnja papira, izdavanje i štampanje <i>Manufacture of paper, publishing and printing</i>	Proizvodnja hemijskih proizvoda i vlakana <i>Manufacture of chemical products and fibres</i>
2005	148.2	199.7	114.1	113.9
2006	207.3	197.7	109.5	70.8
2007	337.9	200.3	115.7	108.0
2008	729.9	152.2	107.8	70.4
2009	100.0	100.0	100.0	100.0
Ø I - VI 2009	153.8	73.6	100.8	95.7
Ø I - VI 2010	30.8	72.2	90.4	92.8
2009				
VI	-	90.2	109.5	112.7
VII	92.3	124.4	122.2	84.9
VIII	-	143.6	112.9	86.3
IX	92.3	124.5	99.6	127.7
X	-	131.7	92.2	130.0
XI	-	110.6	77.2	83.1
XII	92.3	123.4	91.1	113.8
2010				
I	-	29.9	75.9	40.8
II	92.3	35.3	76.0	107.4
III	-	62.7	87.3	81.4
IV	92.3	77.1	95.5	89.8
V	-	114.2	97.2	87.9
VI	-	114.3	110.7	149.4
I-VI 2010/I-VI 2009	20.0	98.1	89.7	97.0

INDEKSI INDUSTRIJSKE PROIZVODNJE – po podsektorima
INDICES OF INDUSTRIAL PRODUCTION – by sub-sectors

Ø 2009 = 100

/nastavak /

/continued/

	Proizvodnja proizvoda od gume i plastičnih masa <i>Manufacture of rubber and plastic products</i>	Proizvodnja proizvoda od ostalih nemetalnih minerala <i>Manufacture of other non-metal minerals</i>	Proizvodnja osnovnih metala i metalnih proizvoda <i>Manufacture of basic metals and metal products</i>	Proizvodnja mašina i uređaja, ostala <i>Manufacture of other machinery and equipment</i>
2005	386.8	175.3	213.3	44.4
2006	269.1	177.1	223.4	100.4
2007	273.4	176.2	246.9	97.1
2008	173.6	172.4	215.0	91.6
2009	100.0	100.0	100.0	100.0
Ø I - VI 2009	112.6	97.4	121.5	88.1
Ø I - VI 2010	49.1	118.2	79.6	133.7
2009				
VI	54.8	88.9	118.4	95.7
VII	88.7	95.7	95.9	70.7
VIII	60.0	101.8	77.1	122.5
IX	88.7	100.8	92.1	119.6
X	99.1	106.4	76.2	114.1
XI	83.5	103.5	60.4	125.3
XII	104.3	107.2	69.6	119.3
2010				
I	31.3	103.6	59.7	92.9
II	39.1	104.6	53.2	146.8
III	49.6	127.8	86.6	153.1
IV	47.0	123.4	100.0	145.8
V	70.4	129.0	82.4	116.2
VI	57.4	120.8	95.7	147.5
I-VI 2010/I-VI 2009	43.6	121.4	65.5	151.8

/nastavak /

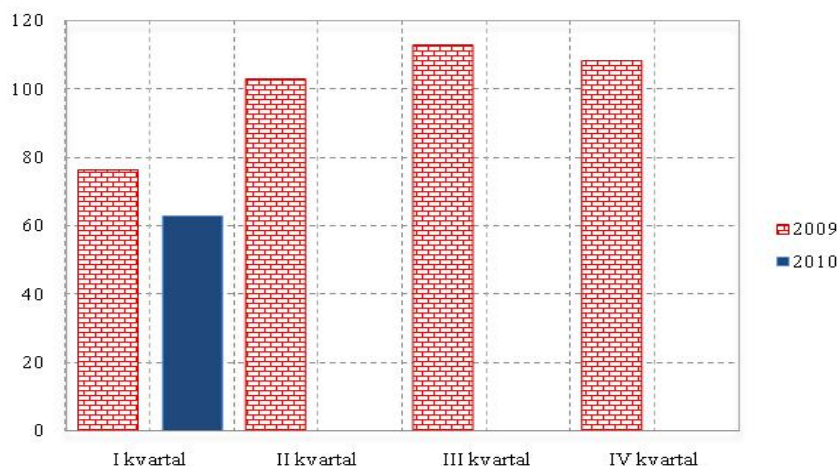
/continued/

	Proizvodnja mašina, uređaja i aparata za domaćinstvo <i>Manufacture of machines, devices and apparatus for households</i>	Proizvodnja saobraćajnih sredstava <i>Manufacture of transport equipment</i>	Prerađivačka industrija, ostala <i>Manufacturing n.e.c.</i>	Proizvodnja električne energije, gasa i vode <i>Electricity, gas and water supply</i>
2005	165.6	137.7	48.9	103.8
2006	189.4	135.8	188.9	106.9
2007	303.9	132.6	186.6	77.7
2008	100.0	113.6	194.2	102.4
2009	100.0	100.0	100.0	100.0
Ø I - VI 2009	-	108.1	88.3	136.4
Ø I - VI 2010	-	65.3	70.9	173.6
2009				
VI	-	138.9	94.9	42.3
VII	-	138.9	152.5	32.3
VIII	-	96.8	98.9	22.1
IX	-	71.6	98.4	6.4
X	-	88.4	88.0	71.5
XI	-	71.6	112.6	106.3
XII	-	84.2	119.8	143.1
2010				
I	-	71.6	52.1	228.2
II	-	12.6	49.5	176.0
III	-	33.7	71.8	197.2
IV	-	54.7	90.5	163.2
V	-	96.8	85.3	143.8
VI	-	122.1	75.9	132.9
I-VI 2010/I-VI 2009	-	60.4	80.3	127.3

GRAĐEVINARSTVO / CONSTRUCTION

Vrijednost izvršenih radova u hiljadama EUR / Value of finalized construction works

Ø 2009 = 100



VRIJEDNOST IZVRŠENIH I UGOVORENIH RADOVA, BROJ ZAPOSLENIH I IZVRŠENI EFEKTIVNI ČASOVI

VALUE OF FINALIZED AND ORDERED WORKS, NUMBER OF EMPLOYEES AND FINALIZED EFFECTIVE HOURS

	Indeks Index	Vrijednost izvršenih radova u hiljadama EUR Value of finalized construction works	Broj radnika na gradilištu na kraju izvještajnog kvartala Number of workers at the construction site at the reporting quarter	Indeks Index	Izvršeni efektivni časovi u 000 Finalized effective hours in thousands	
2005	32.4	73252	2343	66.2	5345	2005
2006	90.4	204248	3525	104.4	8424	2006
2007	87.5	197639	3522	102.6	8280	2007
2008	127.4	287931	4200	123.8	9994	2008
2009	100.0	225953	3665	100.0	8071	2009
2009 I kvartal	76.3	43085	3899	96.4	1946	2009 I quarter
II kvartal	102.9	58136	3768	106.7	2153	II quarter
III kvartal	112.7	63676	3622	102.3	2065	III quarter
IV kvartal	108.1	61056	3370	94.6	1907	IV quarter
2010 I kvartal ¹⁾	62,6	35375	3364	87,3	1761	2010 I quarter ¹⁾
II kvartal						II quarter
III kvartal						III quarter
IV kvartal						IV quarter

/ nastavak/

/continued/

	Indeks Index	Nove narudžbe na zgradama u hilj. EUR New orders on buildings, thous. EUR	Indeks Index	Nove narudžbe na ostalim građevinama u hilj. EUR New orders on other buildings, thous. EUR	
2006	212.2	99327	64.3	60720	2006
2007	299.1	140006	77.9	73539	2007
2008	181.9	85145	131.9	124524	2008
2009	100.0	46816	100.0	94394	2009
2009 I kvartal	110.1	12890	50.8	11979	2009 I quarter
II kvartal	17.7	2065	119.7	28260	II quarter
III kvartal	187.6	21960	125.8	29677	III quarter
IV kvartal	84.6	9901	103.7	24478	IV quarter
2010 I kvartal ¹⁾	119,2	13951	24,7	5833	2010 I quarter ¹⁾
II kvartal	II quarter
III kvartal					III quarter
IV kvartal					IV quarter

¹⁾ Prethodni podaci¹⁾ Preliminary data

SPOLJNA TRGOVINA / EXTERNAL TRADE ¹⁾
Izvoz i uvoz po zemljama, u hilj. EUR / Exports and imports by countries, thous EUR

	Izvoz / Export			Uvoz / Import			
	I - VI 2009	I - VI 2010	Indeks / Index I - VI 2010 I - VI 2009	I - VI 2009	I - VI 2010	Indeks / Index I - VI 2010 I - VI 2009	
UKUPNO	123627.3	142119.3	115.0	767940.4	753343.6	98.1	TOTAL
Evropa	122015.0	138783.6	113.7	705843.6	659181.2	93.4	Europe
Albanija	2678.4	3625.4	135.4	5227.3	3861.2	73.9	Albania
Austrija	622.7	879.3	141.2	30971.5	25989.9	83.9	Austria
Belgija-Luxemburg	48.2	68.0	141.2	3225.6	3246.3	100.6	Belgium – Luxembourg
BiH (sa Rep. Srpskom)	7567.5	9757.0	128.9	42058.5	57051.7	135.6	B&H (with RS)
Bugarska	39.3	78.8	200.8	3300.2	2804.1	85.0	Bulgaria
Velika Britanija	840.6	2480.4	295.1	8116.8	4998.5	61.6	Great Britain
Grčka	30882.2	26319.1	85.2	33827.8	41392.4	122.4	Greece
Danska	0.0	0.0	0.0	1093.1	930.6	85.1	Denmark
Italija	16570.1	16345.4	98.6	56075.1	48451.6	86.4	Italy
Mađarska	7042.9	11379.4	161.6	9902.7	6104.7	61.6	Hungary
Njemačka	1564.9	963.2	61.6	52905.3	55912.2	105.7	Germany
Slovenija	9465.5	9320.8	98.5	42199.4	27903.2	66.1	Slovenia
Poljska	111.9	205.9	184.0	4780.5	4374.1	91.5	Poland
Makedonija	564.8	346.6	61.4	9087.8	11330.2	124.7	Macedonia
Rumunija	414.2	1381.1	333.5	13720.3	7703.9	56.1	Romania
Ruska federacija	647.9	537.6	83.0	15394.2	16525.6	107.3	Russian Federation
Srbija ²⁾	31154.3	36779.3	118.1	231398.8	193387.2	83.6	Serbia
Hrvatska	1275.2	1577.5	123.7	49088.5	35694.5	72.7	Croatia
Francuska	322.5	598.7	185.6	11892.3	12309.9	103.5	France
Holandija	1759.9	3168.6	180.0	9980.3	13447.2	134.7	Netherlands
Češka Republika	984.2	1524.2	154.9	9178.6	6025.1	65.6	Czech Republic
Švajcarska	118.3	1326.0	*	31213.1	11285.5	36.2	Switzerland
Švedska	217.1	240.2	110.6	2890.0	1581.5	54.7	Sweden
Španija	91.0	32.3	35.5	9578.3	12414.3	129.6	Spain
Turska	28.6	1513.5	*	9376.6	15524.3	165.6	Turkey
Ostale zemlje	7003.0	8335.5	119.0	9361.2	38931.5	415.9	Other countries
Azija	708.8	2207.8	311.5	39112.3	67195.8	171.8	Asia
Irak	0.0	0.0	0.0	0.0	0.0	0.0	Irak
Izrael	618.9	0.2	0.0	782.3	280.8	35.9	Israel
Indija	0.0	0.0	0.0	921.5	2254.8	244.7	India
Indonezija	0.0	0.0	0.0	260.6	1224.4	469.9	Indonesia
Japan	11.2	0.0	0.0	6720.2	9678.9	144.0	Japan
Kina	0.0	47.5	0.0	24098.4	39823.6	165.3	China
Koreja	0.0	0.0	0.0	2825.2	5105.4	180.7	Korea
Tajland	0.0	0.0	0.0	1170.0	1648.3	140.9	Thailand
Hong Kong	0.0	59.0	0.0	363.7	337.7	92.9	Hong Kong
Ostale zemlje	78.7	2101.1	...	1970.4	6842.0	347.2	Other countries
Afrika	683.0	657.5	96.3	498.8	2452.4	491.7	Africa
Egipat	469.3	628.3	133.9	343.3	309.8	90.3	Egypt
Etiopija	0.0	0.0	0.0	0.0	0.2	0.0	Ethiopia
Libijska Araps.Džamah.	0.0	1.2	0.0	0.0	0.0	0.0	Libyan Arab.Jamahiriyah
Maroko	0.0	0.0	0.0	80.1	175.9	219.4	Morocco
Tunis	0.0	0.0	0.0	7.0	327.6	...	Tunis
Ostale zemlje	213.7	28.1	13.1	68.4	1639.0	...	Other countries
Amerika	220.6	320.1	145.1	22428.3	24170.4	107.8	America
Kanada	50.3	46.3	92.2	549.3	640.2	116.5	Canada
Panama	0.0	0.0	0.0	86.1	9.6	11.1	Panama
SAD	163.6	257.8	157.6	8029.9	6650.3	82.8	USA
Argentina	0.0	0.0	0.0	464.5	370.5	79.7	Argentina
Brazil	0.0	0.0	0.0	11139.8	14064.9	126.3	Brazil
Ekvador	0.0	0.0	0.0	1513.9	1314.4	86.8	Ecuador
Kolumbija	0.0	0.0	0.0	14.6	36.7	252.1	Columbia
Peru	0.0	0.0	0.0	0.0	29.8	0.0	Peru
Devičanska ostrva	0.0	0.0	0.0	15.2	6.7	44.4	The Virgin Islands
Ostale zemlje	6.8	16.0	236.2	615.1	1047.3	170.3	Other countries
Australija i Okeanija	0.0	150.3	0.0	57.4	343.5	598.8	Australia and Oceania
Australija	0.0	17.8	0.0	39.8	154.0	386.9	Australia
Novi Zeland	0.0	0.0	0.0	17.6	186.3	...	New Zealand
Ostale zemlje	0.0	132.5	0.0	0.0	3.3	0.0	Other countries

¹⁾ Predhodni podaci²⁾ Za 2009 bez podataka za Kosovo i Metohiju¹⁾ Previous data²⁾ Without data for Kosovo and Metohia in 2009

SPOLJNA TRGOVINA / EXTERNAL TRADE
Izvoz i uvoz robe, hilj. EUR / Exports and imports of goods, thous EUR

	Izvoz / Export			Uvoz / Import			
	I - VI 2009	I - VI 2010	Indeks / Index I-VI 2010 I-VI 2009	I - VI 2009	I - VI 2010	Indeks / Index I-VI 2010 I-VI 2009	
Ukupno	123627.3	142119.4	115.0	767940.6	753343.6	98.1	Total
Zive životinje	4.2	8.6	204.8	7849.1	9726.0	123.9	Live animals
Meso i drugi klanični proizvodi za jelo	1041.8	1648.2	158.2	29044.5	27250.9	93.8	Meat and edible meat offal
Ribe, ljuskari, mekušci i ostali vodeni beskičmenjaci	43.9	53.9	122.8	2271.7	2024.2	89.1	Fish and crustaceans, molluscs and other aquatic invertebrates
Mlijeko i proizvodi od mlijeka, živinska i ptičja jaja, prirodni med, jestivi proizvodi životinskog porijekla, nepomenuti niti obuhvaćeni na drugom mjestu	25.3	1.0	4.0	16129.9	17223.1	106.8	Dairy produce; birds' eggs; natural honey; edible products of animal origin, not elsewhere specified or included
Proizvodi životinjskog porijekla, na drugom mjestu nepomenuti niti obuhv.	2.5	5.5	220.0	146.9	101.1	68.8	Products of animal origin, not elsewhere specified or included
Živo drveće i druge biljke; lukovice, korijenje i slično; siječeno cvijeće i ukrasno lišće	5.6	24.7	441.1	1930.7	1535.7	79.5	Live trees and other plants; bulbs, roots and the like; cut flowers and ornamental foliage
Povrće, korijenje i krtolice za jelo	369.3	512.9	138.9	3939.7	3605.8	91.5	Edible veg. and certain roots and tub.
Voće za jelo, uključujući jezgrasto voće; kore agruma ili dinja i lubenica	297.8	500.1	167.9	5282.7	5022.3	95.1	Edible fruit and nuts; peel of citrus fruits or melons
Kafa, čaj, mate čaj i začini	10.4	66.4	638.5	6708.2	10651.1	158.8	Coffee, tea, maté and spices
Žitarice	54.9	0.0	0.0	5867.3	2529.6	43.1	Cereals
Proizvodi mlinarske industrije; slad; skrob; inulin; gluten od pšenice	519.8	388.4	74.7	7395.9	6212.8	84.0	Products of the milling industry; malt; starches; inulin; wheat gluten
Uljano sjemenje i plodovi; razno zrnevlje, sjeme i plodovi; industrijsko i ljekovito bilje; slama i stočna hrana (kabasta)	65.9	20.8	31.6	900.0	1039.5	115.5	Oil seeds and oleaginous fruits; miscel-laneous grains, seeds and fruit; indust-rial or medicinal plants; straw and fodd
Seljak; gume, smole i ostali biljni sokovi i ekstrakti	0.0	0.0	0.0	41.2	24.8	60.2	Lac; gums, resins and other vegetable saps and extracts
Biljni materijali za pletarstvo; biljni proiz na drugom mjestu nepomenuti niti obuh.	0.0	0.2	0.0	14.3	29.2	204.2	Vegetable plaiting materials; vegetable produc. not elsewhere specified or incl.
Masnoće i ulja životinjskog ili biljnog porijekla i proizvodi njihovog razlaganja; prerađene jestive masnoće; voskovi životinjskog i biljnog porijekla	136.1	478.4	351.5	6143.8	5708.7	92.9	Animal or vegetable fats and oils and their cleavage products; prepared edible fats; animal or vegetable waxes
Prerađevine od mesa, riba, ljuskara, mekušaca ili ostalih vodenih beskičmenjaka	1377.0	1204.3	87.5	9447.6	8941.2	94.6	Preparations of meat, of fish or of crustaceans, molluscs or other aquatic invertebrates
Šećer i proizvodi od šećera	129.9	201.6	155.2	3658.6	3729.5	101.9	Sugars and sugar confectionery
Kakao i proizvodi od kakaa	3.5	1502.5	...	8416.6	8897.5	105.7	Cocoa and cocoa preparations
Proizvodi na bazi žitarica, brašna, skroba ili mlijeka; poslastičarski proizvodi	308.3	804.9	261.1	11269.6	11841.5	105.1	Preparations of cereals, flour, starch or milk; pastrycooks' products
Proizvodi od povrća, voća, uključujući jezgrasto voće, i ostalih dijelova bilja	337.7	592.5	175.5	9245.9	7725.5	83.6	Preparations of vegetables, fruit, nuts or other parts of plants
Razni proizvodi za ishranu	290.4	995.8	342.9	11136.6	11510.0	103.4	Miscellaneous edible preparations
Pića, alkoholi i sirće	8372.0	7553.1	90.2	20123.6	18695.4	92.9	Beverages, spirits and vinegar
Ostaci i otpaci prehrambene industrije; pripremljena hrana za životinje	92.2	66.5	72.1	5187.1	5716.7	110.2	Residues and waste from the food industries; prepared animal fodder
Duvan i proizvodi zamjene duvana	455.9	0.1	0.0	8743.4	6778.4	77.5	Tobacco and manuf. tobacco substitut.
So; sumpor; zemlja i kamen; gips, kreč i cement	753.1	1979.0	262.8	19254.7	14398.3	74.8	Salt; sulphur; earths and stone; plastering materials, lime and cement
Rude, zgure i pepeo	0.0	572.6	0.0	162.5	20.9	12.9	Ores, slag and ash
Mineralna goriva, mineralna ulja i proizvodi njihove destilacije; bitumenozne materije; mineralni voskovi	2943.7	15538.4	527.9	88874.6	87050.3	97.9	Mineral fuels, mineral oils and products of their distillation; bitumi-nous substances; mineral waxes
Neorganski hemijski proizvodi; organska ili neorganska jedinjenja plemenitih metala, metala rijetkih zemlji, radioaktivnih elemenata i izotopa	7.7	49.5	642.9	6024.7	23846.2	395.8	Inorganic chemicals; organic or norga-nic compounds of precious metals, of rare-earth metals, of radioactive lemen-ts or of isotopes
Organski hemijski proizvodi	126.4	37.9	30.0	4605.5	1527.6	33.2	Organic chemicals
Farmaceutski proizvodi	4037.6	3877.4	96.0	21576.2	26015.8	120.6	Pharmaceutical products
Đubriva	0.1	21.8	...	1552.2	1781.8	114.8	Fertilisers
Ekstrati za štavljenje ili bojenje; tanini i njihovi derivati; boje, pigmenti i ostale materije za bojenje; boje i lakovi; kitovi i ostale zaptivne mase; mastila	41.1	48.1	117.0	11177.8	9340.8	83.6	Tanning or dyeing extracts; tannins and their derivatives; dyes, pigments and other colouring matter; paints and varnishes; putty and other mastics; inks
Eterična ulja i rezinoidi; parfimerijski, kozmetički i toaletni proizvodi	526.0	700.5	133.2	9613.6	10243.2	106.5	Essential oils and resinoids; perfu-mery, cosmetic or toilet preparations

SPOLJNA TRGOVINA / XTERNAL TRADE
Izvoz i uvoz robe, hilj. EUR / Exports and imports of goods, thous EUR

/ nastavak /				/continued /		
	Izvoz / Export			Uvoz / Import		
	I - VI 2009	I - VI 2010	Indeks / Index <u>I-VI 2010</u> I-VI 2009	I - VI 2009	I - VI 2010	Indeks / Index <u>I-VI 2010</u> I-VI 2009
Sapun, organska površinska aktivna sredstva, preparati za pranje, preparati za podmazivanje, vještački voskovi, pripremljeni voskovi, preparati za poliranje i čišćenje, svijeće i slični proizvodi, paste za modelovanje "zubarski voskovi" i zubarski preparati n	75.6	78.1	103.3	8061.4	8442.4	104.7
Bjelančevinaste materije; modifikovani skrobovi; lijepkovi; enzimi	2.1	0.8	38.1	1697.1	1621.6	95.6
Eksplzivni; pirotehnički proizvodi; šibice; piroforne legure; zapaljivi preparati	165.3	53.9	32.6	264.6	203.1	76.8
Proizvodi za fotografske ili kinematografske svrhe	7.2	10.2	141.7	562.8	415.9	73.9
Razni proizvodi hemijske industrije	30.1	47.6	158.1	7811.6	8045.2	103.0
Plastične mase i proiz. od plastičnih masa	233.7	547.7	234.4	24137.6	22612.1	93.7
Kaučuk i proizvodi od kaučuka i gume	81.6	119.4	146.3	4976.1	6540.3	131.4
Sirova sitna i krupna koža, sa dlakom ili bez dlake (osim krzna) i štavljena koža	909.1	1623.0	178.5	84.7	88.7	104.7
Proizvodi od kože, sedlarski i sarački proizvodi, predmeti za putovanje, ručne torbe i slični kontejneri i proizvodi od životinjskih crijeva (osim svilenog ketguta)	35.6	38.6	108.4	2699.5	2557.0	94.7
Prirodno i vještačko krzno; proizvodi od krzna	0.1	0.0	0.0	44.2	6.9	15.6
Drvo i proizvodi od drveta; drveni ugali	5420.8	6173.6	113.9	10809.9	10717.5	99.1
Pluta i proizvodi od plute	0.0	0.0	0.0	333.2	294.6	88.4
Proizvodi od slame, esparta ili ostalih materijala za pletariju; korparskih i pletarskih proizvoda	0.1	0.3	300.0	77.6	101.0	130.2
Celuloza od drveta ili drugih vlaknastih celuloznih materijala; hartija i karton (otpaci i ostaci) za ponovnu preradu	216.5	289.2	133.6	0.1	0.6	600.0
Hartija i karton; proizvodi od hartijine pulpe, hartije ili kartona	939.7	896.7	95.4	12667.4	13599.9	107.4
Štampane knjige, novine, slike i ostali proizvodi grafičke industrije, rukopisi, kucani tekstovi i planovi	774.3	464.5	60.0	7451.0	8403.1	112.8
Svila	0.0	0.0	0.0	14.4	8.7	60.4
Vuna, fina ili gruba životinjska dlaka, predivo i tkanine od konjske dlake	13.8	0.3	2.2	13.5	1.4	10.4
Pamuk	14.1	10.8	76.6	249.1	224.0	89.9
Ostala biljna tekstilna vlakna; predivo od hartije i tkanine od prediva od hartije	0.1	0.0	0.0	7.1	11.6	163.4
Vještački ili sintetički filamenti	0.1	0.0	0.0	203.0	293.0	144.3
Vještačka ili sintetička vlakna, sječena	2.7	18.6	688.9	282.2	245.1	86.9
Vata, filc i netkani materijal; specijalna prediva; kanapi, užad, konopci i kablovi i proizvodi od njih	1.5	5.4	360.0	853.0	1050.7	123.2
Tepisi i ostali tekstilni podni pokrivači	8.7	9.4	108.0	1194.4	1174.9	98.4
Specijalne tkanine; taftovani tekstilni proizv.; čipke; tapiserije; pozamanterija, vez	2.1	0.0	0.0	39.6	81.1	204.8
Tekst. tkanine, impregnisane, premazane, prevučene, prekrivene ili laminirane, tekstilni proizvodi pogodni za tehn. svrhe	1.9	0.0	0.0	190.0	440.7	231.9
Pleteni ili kukičani materijali	0.2	0.0	0.0	59.4	71.8	120.9
Odjeća i pribor za odjeću, pleteni ili kukičani	171.7	116.9	68.1	5723.4	5323.1	93.0
Odjeća i pribor za odjeću, osim pletenih ili kukičanih proizvoda	359.8	444.6	123.6	13759.0	12410.5	90.2
Ostali gotovi proizvodi od tekstila; setovi, iznošena, dotrajala odjeća i dotrajali proizvodi od tekstila; krpe	16.2	65.9	406.8	2487.2	2382.7	95.8
Obuća, kamašne i slični proizvodi; dijelovi tih proizvoda	285.4	74.3	26.0	14440.7	10779.1	74.6

SPOLJNA TRGOVINA / EXTERNAL TRADE

Izvoz i uvoz robe, hilj. EUR / Exports and imports of goods, thous EUR

/ nastavak /							/ continued /
	Izvoz / Export			Uvoz / Import			
	I - VI 2009	I - VI 2010	Indeks / Index <u>I-VI 2010</u> I-VI 2009	I - VI 2009	I - VI 2010	Indeks / Index <u>I-VI 2010</u> I-VI 2009	
Šeširi, kape i ost. pokrivke za glavu i djel.	5.7	2.8	49.1	250.3	461.7	184.5	Headgear and parts thereof
Kišobrani, suncobrani, štapovi, štapovi- stolice, bičevi, korbači i njihovi dijelovi	13.9	1.3	9.4	517.9	612.4	118.2	Umbrellas, sun umbrellas, walking-sticks, seat-sticks, whips, riding-crops and parts thereof
Perje i paperje, preparirano i proizvodi izradjeni od perja i paperja; vještačko cvijeće;proizvodi od ljudske kose	2.1	0.0	0.0	74.2	88.5	119.3	Prepared feathers and down and arti-cles made of feathers or of down; arti-ficial flowers; articles of human hair
Proizvodi od kamena, gipsa, cementa, betona, azbesta, liskuna ili sličnih mater.	159.3	198.2	124.4	6241.8	6988.2	112.0	Articles of stone, plaster, cement, asbestos, mica or similar materials
Keramički proizvodi	135.4	64.9	47.9	15602.0	10791.1	69.2	Ceramic products
Staklo i proizvodi od stakla	7.3	42.2	578.1	6775.9	6042.7	89.2	Glass and glassware
Prirodni ili kultivisani biseri, drago ili polu- drago kamenje,plemeniti metali, metali platinirani plemenitim metalima, i proizvodi od njih; imitacije nakita; metalni novac	16.2	16.5	101.9	614.8	549.9	89.4	Natural or cultured pearls, precious or semi-precious stones, precious metals, metals clad with precious metal, and artic. thereof; imitation jewellery; coin
Gvožđe i čelik	17507.2	11272.4	64.4	22738.2	13588.8	59.8	Iron and steel
Proizvodi od gvožđa i čelika	4011.1	1380.4	34.4	30479.8	26390.7	86.6	Articles of iron or steel
Bakar i proizvodi od bakra	848.2	3702.0	436.5	820.9	826.6	100.7	Copper and articles thereof
Nikl i proizvodi od nikla	0.0	0.0	0.0	25.9	195.5	754.8	Nickel and articles thereof
Aluminijum i proizvodi od aluminijuma	56730.3	59704.4	105.2	11318.2	9597.5	84.8	Aluminium and articles thereof
Olovo i proizvodi od olova	21.8	87.3	400.5	38.1	8.5	22.3	Lead and articles thereof
Cink i proizvodi od cinka	156.6	20.3	13.0	188.7	204.8	108.5	Zinc and articles thereof
Kalaj i proizvodi od kalaja	0.0	0.0	0.0	4.5	3.8	84.4	Tin and articles thereof
Ostali prosti metali; kremeti; proiz. od njih	0.2	0.0	0.0	14.7	23.8	161.9	Other base metals; cermets;art. thereof
Alati, nožarski proizvodi, kašike i viljuške, od prostih metala; njihovi dijelovi od prostih metala	90.5	83.1	91.8	2328.2	2454.4	105.4	Tools, implements, cutlery, spoons and forks, of base metal; parts thereof of base metal
Razni proizvodi od prostih metala	539.4	341.8	63.4	3397.4	3297.5	97.1	Miscellaneous articles of base metal
Reaktori, kotlovi, mašine i mehanički uređaji i njihovi dijelovi	6238.7	4999.0	80.1	49749.8	61674.7	124.0	Reactors, boilers, machinery and mechanical appliances; parts ther.
Električne mašine i oprema i njihovi dije- lovi; aparati za snimanje i reprodukciju zvuka;televizijski aparati za snimanje i reprodukciju slike i zvuk, dijelovi i pribor za te proizvode	1661.1	1951.8	117.5	46320.5	48189.5	104.0	Electrical machinery and equipment and parts thereof; sound recorders and reproducers, television image and sound recorders and reproducers, and parts and accessories of such articles
Šinska vozila i njihovi dijelovi; željeznički i tramvajski kolosječni sklopovi i pribor i njihovi dijelovi, mehanička i elektromehanička signalna oprema za saobraćaj svih vrsta	9.1	19.4	213.2	567.3	381.0	67.2	Railway or tramway locomotives, rolling- stock and parts thereof; railway or tramway track fixtures and fittings and parts thereof; mechanical (including electro-mechanical) traffic signalling equipment of all kinds
Vozila, osim željezničkih ili tramvajskih šinskih vozila i njihovi dijelovi i pribor	1382.5	1866.6	135.0	40144.6	46693.2	116.3	Vehicles other than railway or tramway rolling-stock, and parts and acc. Ther.
Vazduhopl., kosmičke letjelice i njihovi dj.	466.5	2376.1	509.3	9623.6	3810.3	39.6	Aircraft, spacecraft, and parts thereof
Brodovi, čamci i ploveće konstrukcije	209.5	1070.8	511.1	6583.1	2181.5	33.1	Ships, boats and floating structures
Optički, fotografski, kinematografski, mjerni, kontrolni, precizni, medicinski i hirurški instrumenti i aparati; njihovi dijelovi i pribor	145.9	235.6	161.5	14919.0	8248.0	55.3	Optical, photographic, cinematograp-hic, measuring, checking, precision, medical or surgical instruments and apparatus; parts and accessories ther.
Časovnici i njihovi dijelovi	3.8	52.0	...	719.4	570.1	79.2	Clocks and watches and parts thereof
Muzički instrumenti, dijelovi i pribor ovih proizvoda	0.0	9.9	0.0	187.1	219.6	117.4	Musical instruments; parts and accessories of such articles
Namještaj, posteljina, madraci, nosači madraca, jastuci i slični punjeni proizvodi; lampe i druga svjetleća tijela, na drugom mjestu nepomenuti ili uključeni; osvijetljeni znaci, osvijetljene pločica imenima i slično, montažne zgrade	427.3	563.9	132.0	25561.9	23483.5	91.9	Furniture; bedding, mattresses, mattress supports, cushions and similar stuffed furnishings; lamps and lighting fittings, not elsewhere specified or included; illuminated signs, illuminated name-plates and the like; prefabricated build.
Igračke, rekviziti za društvene igre i sport; njihovi dijelovi i pribor	107.5	152.5	141.9	4151.4	3616.0	87.1	Toys, games and sports requisites; parts and accessories thereof
Razni proizvodi	13.7	15.8	115.3	1510.9	1343.2	88.9	Miscellaneous manufactured articles
Predmeti umjetnosti, kolekcija i starina	242.3	337.7	139.4	40.7	62.1	152.6	Works of art, collectors' pieces and ant.
Nerazvrstani	323.9	1005.3	310.4	1498.3	1850.8	123.5	Other

UNUTRAŠNJA TRGOVINA / DOMESTIC TRADE
PROMET U TRGOVINI NA MALO / TURNOVER IN RETAIL TRADE

Ø 2009 = 100

	Indeks ¹⁾ / <i>Index</i>	PROMET u hilj. EUR / <i>Turnover in thous. EUR</i>
2006	68.2	581942
2007	94.7	808258
2008	109.9	937340
2009	100.0	853203
Ø I - VI 2009	90.3	64199
Ø I - VI 2010	91.7	65184
2009 ²⁾		
VI	102.8	73123
VII	125.2	89003
VIII	131.3	93379
IX	102.3	72735
X	100.2	71213
XI	89.4	63536
XII	109.9	78140
2010		
I	73.7	52.409
II	86.1	61235
III	81.4	57891
IV	93.05	66156
V	102.3	72746
VI	113.5	80668
I-VI 2010/I-VI 2009	101.5	101.5

¹⁾ Indeks prometa po tekućim cijenama.²⁾ Prethodni podaci¹⁾ Index of turnover at current prices.²⁾ Preliminary data

	PROMET U TRGOVINI NA MALO / TURNOVER IN RETAIL TRADE						
	PROMET u hilj. EUR <i>Turnover in thous. EUR 2010</i>	tekući mjesec na prethodni <i>Current month compared to the previous month</i>		mjesec 2010. na isti mjesec 2009. <i>Month in 2010 compared to the same month 2009</i>		mjesec 2010. na Ø 2009 <i>Month in 2010 to Ø 2009</i>	
		indeks prometa u tekućim cijenama <i>Index of turnover at current prices</i>	indeks prometa u stalnim cijenama <i>Index of turnover at constant prices</i>	indeks prometa u tekućim cijenama <i>Index of turnover at current prices</i>	indeks prometa u stalnim cijenama <i>Index of turnover at constant prices</i>	indeks prometa u tekućim cijenama <i>Index of turnover at current prices</i>	indeks prometa u stalnim cijenama <i>Index of turnover at constant prices</i>
2010							
I	52409	67.1	67.5	90.5	92.4	73.7	74.2
II	61235	116.8	116.9	102.5	104.8	86.1	87.3
III	57891	94.5	95.1	98.5	100.7	81.4	82.9
IV	66156	114.3	114.5	96.8	97.9	93.0	94.6
V	72746	110	110.2	108.1	109.2	102.3	104.1
VI	80668	110.9	111.0	110.3	111.8	113.5	115.6

¹⁾ Prethodni podaci¹⁾ Preliminary data

PRODAJA I OTKUP PROIZVODA POLJOPRIVREDE, ŠUMARSTVA I RIBARSTVA
SALE AND BUYING OUT OF PRODUCTS FROM AGRICULTURE, FORESTRY AND FISHERY

U hiljadama EUR			In thousands EUR				
	Indeks <i>Index</i> Ø 2009 =100	Ukupna vrijednost <i>Total value</i>	Poljoprivreda i šumarstvo / <i>Agriculture and forestry</i>				
			žita <i>Cereals</i>	industrijsko bilje <i>Industrial crops</i>	povrće ¹⁾ <i>Vegetables</i>	voće <i>Fruit</i>	grožđe <i>Vine</i>
2005	74.4	15689	2	1032	146	1128	1480
2006	73.2	15422	11	-	142	1127	1208
2007	78.4	16523	-	831	284	1000	1778
2008	95.8	20198	1	-	491	1749	1897
2009	100.0	21081	51	301	296	1640	1493
Ø I - VI 2009	72.6	1275	-	50	16	81	-
Ø I - VI 2010	62.5	1098	19	40	33	70	-
2009							
VI							
VII	105.7	1857	-	-	83	7	518
VIII	140.3	2465	-	-	14	74	812
IX	114.3	2009	27	-	39	2	163
X	117.9	2072	19	-	35	5	-
XI	181.9	3196	-	-	13	1018	-
XII	104.3	1832	5	-	20	46	-
2010							
I	52.1	915	112	-	28	1	-
II	58.6	1030	-	238	19	-	-
III	59.5	1046	1	-	100	-	-
IV	57.5	1010	-	-	22	3	-
V	57.0	1002	1	-	13	-	-
VI	90.2	1585	--	-	13	418	-
I-VI 2010/I-VI 2009	86.1	86.1	-	79.1	212.0	86.5	-

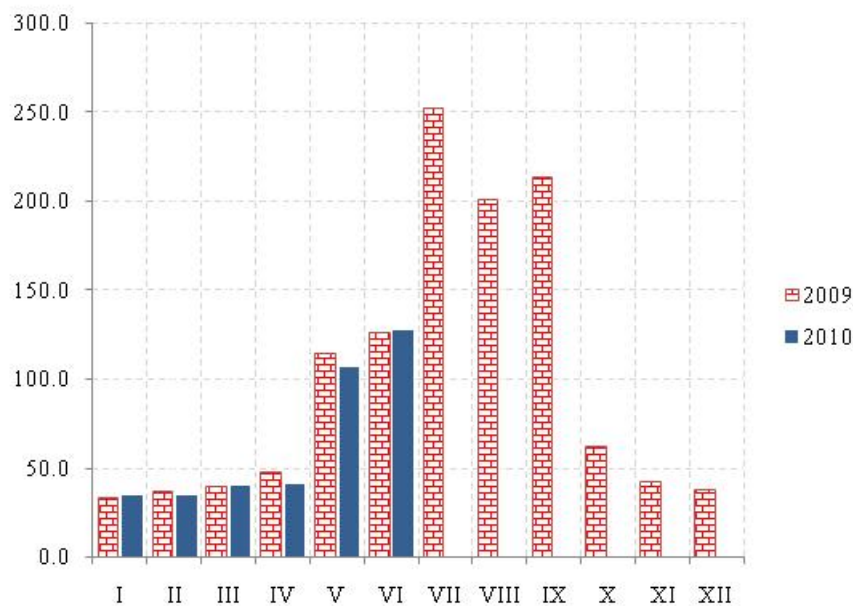
/ nastavak /

/ continued /

	Poljoprivreda i šumarstvo / <i>Agriculture and forestry</i>						Ribarstvo <i>Fishery</i>
	prerađevine voća i grožđa <i>Products of fruit and vine</i>	Stoka <i>Livestock</i>	živina i jaja <i>Poultry and eggs</i>	mlijeko i mliječni proizvodi <i>Milk and milk products</i>	koža i vuna <i>Leather and wool</i>	ostali proizvodi <i>Other products</i>	riba svježa <i>Fresh fish</i>
2005	67	4762	814	4762	8	1173	315
2006	100	5437	732	5379	-	969	317
2007	171	5912	800	4640	-	810	297
2008	189	8017	1082	5204	-	1312	256
2009	84	9170	1725	4517	-	582	1222
Ø I - VI 2009	4	481	143	375	-	26	99
Ø I - VI 2010	6	296	110	366	-	52	106
2009							
VI	10	517	189	399	-	35	120
VII	-	549	131	445	-	-	124
VIII	12	576	192	429	-	225	131
IX	-	1166	148	371	-	-	93
X	8	1453	119	363	-	-	70
XI	-	1457	124	321	-	200	63
XII	41	1085	151	338	-	-	146
2010							
I	-	232	96	341	-	25	80
II	3	264	122	255	-	51	78
III	2	260	154	386	-	30	113
IV	3	314	99	355	-	105	109
V	1	335	87	388	-	71	106
VI	25	369	105	474	-	31	150
I-VI 2010/I-VI 2009	147.8	61.5	77.1	97.7	-	199.4	106.9

¹⁾ Uključeni i krompir i pasulj.¹⁾ includes potatoes and beans.

UGOSTITELJSTVO / CATERING



Promet u ugostiteljstvu / Turnover in catering

Ø 2009 = 100

	Indeks ¹⁾ Index	Promet u hilj. EUR Turnover in thousands EUR
2005	49.4	65552
2006	97.0	128720
2007	102.5	136039
2008	107.6	142833
2009	100	132768
Ø I - VI 2009	65.9	7289
Ø I - VI 2010	63.8	7064
2009		
VI	125.5	13888
VII	251.6	22199
VIII	200.6	27775
IX	212.6	23518
X	61.3	6777
XI	41.9	4637
XII	37.3	4130
2010		
I	34.3	3792
II	34.3	3797
III	39.9	4414
IV	40.9	4522
V	106.4	11770
VI	127.3	14086
I-VI 2010/I-VI 2009	96.9	96.9

TURIZAM / TOURISM**Dolasci i noćenja turista po zemljama i prema vrsti mjesta***Tourist arrivals and tourist overnight stays by country and type of resort*

	2009	Kumulativ I - VI		2010			
		2009	2010	IV	V	VI	
Dolasci turista							Tourist arrivals
Ukupno	1207694	275909	274877	25921	79148	121336	Total
Domaći	163680	49375	47877	5097	13777	15175	Domestic
Strani	1044014	226534	227000	20824	65371	106161	Foreigners
Noćenja turista – ukupno	7552006	1481490	1474500	97063	377725	806866	Tourist overnight stays – total
Noćenja domaćih turista	856332	210905	227075	17740	62229	91662	Overnight stays of domestic tourists
Noćenja stranih turista	6695674	1270585	1247425	79323	315496	715204	Overnight stays of foreigners
Albanija	192145	36529	70352	2556	30660	26842	Albania
Austrija	57588	16570	18990	1029	9398	7007	Austria
Belgija	46834	14609	16084	1470	9108	5190	Belgium
Bosna i Hercegovina	778455	183127	129891	8374	27256	71118	Bosnia and Herzegovina
Bugarska	23307	7597	6088	574	2806	1722	Bulgaria
Češka Republika	171643	25865	16991	272	972	15511	Czech Republic
Danska	5371	641	1983	137	349	1303	Danmark
Finska	7777	3968	1550	153	427	780	Finland
Francuska	193983	46448	59693	7860	22821	27310	France
Grčka	5498	1856	2338	323	524	818	Greece
Holandija	27647	9972	10488	4436	3426	920	Netherlands
Hrvatska	59798	20162	19369	2801	4225	7029	Croatia
Italija	225976	29846	31139	2696	4555	18733	Italy
Mađarska	205259	23999	29571	512	2000	26245	Hungary
Makedonija	153530	48597	27972	3324	6575	6426	Macedonia
Norveška	43620	16101	20294	1273	6969	11607	Norway
Njemačka	109893	32955	26337	2199	9994	12154	Germany
Poljska	123557	11699	20511	637	4410	15194	Poland
Rumunija	38061	4440	8003	617	1791	5032	Romania
Rusija	1060510	234558	246415	5665	55116	174766	Russia
Slovačka	61841	7528	3821	126	418	3098	Slovakia
Slovenija	84578	18319	14751	1920	3887	6317	Slovenia
Srbija ¹⁾	2298720	348333	313225	18572	63341	195005	Serbia ¹⁾
Švajcarska	11887	2571	8460	246	624	7053	Switzerland
Švedska	47696	13546	15780	530	5853	8853	Sweden
Ukrajina	89681	12266	15045	545	3323	10543	Ukraine
Velika Britanija	79418	28035	26132	2202	10988	11267	Great Britain
Ostale evropske zemlje	418682	45297	60892	5480	17508	26703	Other European countries
Izrael	20163	7241	4707	381	1665	2482	Israel
Kanada	6120	1312	1759	163	539	695	Canada
SAD	22645	7881	10657	1497	2268	4123	USA
Ostale vanevropske zemlje	22791	8717	8137	753	1700	3358	Other non-European countries
Noćenja po vrstama mjesta – ukupno	7552006	14811490	1474500	97063	377725	806866	Overnight stays by type of tourist resorts – total
Glavni administrativni centar	103464	48608	48708	8044	8863	8696	Main administrative center
Primorska	7244830	1340912	1339322	81183	352550	775950	Coastal
Planinska	99500	42904	49371	4561	6576	12671	Mountain
Ostala turistička mjesta	102208	48599	36179	3098	9618	9217	Other tourist resorts
Ostala mjesta	2004	467	920	177	118	332	Other places
Primorska mjesta							Coastal resorts
Bar	964062	222241	258721	16369	68841	123085	Bar
Budva	3258649	596205	560826	31756	136809	366128	Budva
Kotor	316130	29910	27136	1834	5086	17572	Kotor
Tivat	244446	44908	54888	6004	10689	32131	Tivat
Ulcinj	656544	62106	111268	1795	44236	56590	Ulcinj
Herceg Novi	1804999	385542	326483	23425	86889	180444	Herceg Novi

TURIZAM / TOURISM**DOLASCI I NOĆENJA GOSTIJU PO VRSTAMA TURISTIČKIH MJESTA
TOURIST ARRIVALS AND TOURIST OVERNIGHT STAYS BY TYPE OF PLACE**

	Dolasci / Arrivals					Noćenja / Nights				
	glavni grad <i>Capital</i>	primorska mjest <i>Coastal resorts</i>	planinska mjest <i>Mountain resorts</i>	ostala turistička mjest <i>Other tourist resorts</i>	ostala mjest <i>Other places</i>	glavni grad <i>Capital</i>	primorska mjest <i>Coastal resorts</i>	planinska mjest <i>Mountain resorts</i>	ostala turistička mjest <i>Other tourist resorts</i>	ostala mjest <i>Other places</i>
2005	29819	747734	19185	23599	120	53886	5022260	53577	82003	121
2006	39295	859904	26362	28144	223	74169	5691770	68424	101677	230
2007	45588	1010742	39158	37642	302	104986	6961444	105892	121871	337
2008	50393	1058825	38304	40229	365	111271	7459794	102560	120682	434
2009	49166	1081805	41161	34623	939	103464	7244830	99500	102208	2004
Ø I - VI 2009	3835	36358	3020	2725	47	8101	223485	7151	8100	78
Ø I - VI 2010	4211	36307	3183	2045	66	8118	223220	8228	6030	153
2009										
VI	5072	100485	4486	4007	82	12219	707176	9622	12451	146
VII	4646	291835	5634	4150	132	12350	1932813	15974	12550	374
VIII	3230	384515	6956	4890	162	6277	2895082	17225	15987	201
IX	4385	149476	4724	4386	65	9821	874686	9882	12221	491
X	4840	24374	2644	1735	111	9183	122739	5652	5844	191
XI	4892	7395	1045	1466	111	9389	46239	3873	4070	148
XII	4165	6129	2037	1646	77	7836	32619	3990	2946	132
2010										
I	2846	6328	3662	1295	69	6473	33730	12137	4637	120
II	4100	8453	2996	1465	52	7504	43895	8138	4845	78
III	4521	9033	2052	1538	62	9128	52014	5288	4764	95
IV	4403	18073	1915	1471	59	8044	81183	4561	3098	177
V	4623	67793	3305	3365	62	8863	352550	6576	9618	118
VI	4774	108161	5170	3139	92	8696	775950	12671	9217	332
I-VI 2010/I-VI 2009	109.8	99.8	105.4	75.0	140.4	100.2	99.9	115.1	74.4	196.1

DOLASCI I NOĆENJA TURISTA / TOURIST ARRIVALS AND TOURIST OVERNIGHT STAYS

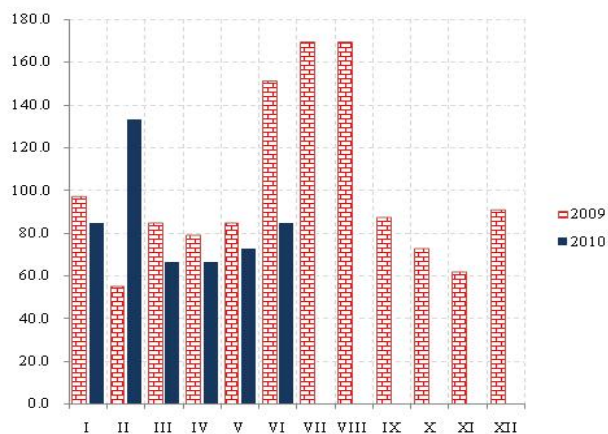
	Dolasci/Arrivals			Noćenja / Nights		
	ukupno / Total	domaći / Domestic	strani / Foreign	ukupno / Total	domaći / Domestic	strani / Foreign
2005	820457	548452	272005	5211847	3628337	1583510
2006	953928	576130	377798	5936270	3740179	2196091
2007	1133432	149294	984138	7294530	851045	6443485
2008	1188116	156904	1031212	7794741	828462	6966279
2009	1207694	163680	1044014	7552006	856332	6695674
Ø I - VI 2009	45985	8229	37756	246915	35151	211764
Ø I - VI 2010	45813	7979	37833	245750	37846	207904
2009						
VI	114132	13659	100473	741614	67059	674555
VII	306397	33096	273301	1974061	196177	1777884
VIII	399753	42297	357456	2934772	283130	2651642
IX	163036	23069	139967	907092	110581	796511
X	33704	8083	25621	143609	30899	112710
XI	14909	3241	11668	63719	16828	46891
XII	14054	4587	9467	47523	8072	39451
2010						
I	14200	5062	9138	57097	18620	38477
II	17066	4609	12457	64460	17296	47164
III	17206	4157	13049	71289	19528	51761
IV	25921	5097	20824	97063	17740	79323
V	79148	13777	65371	377725	62229	315496
VI	121336	15175	106161	806866	91662	715204
I-VI 2010/I-VI 2009	99.6	97.0	100.2	99.5	107.7	98.2

SAOBRAĆAJ, SKLADIŠTENJE I VEZE
TRANSPORT, STORAGE AND COMMUNICATIONS

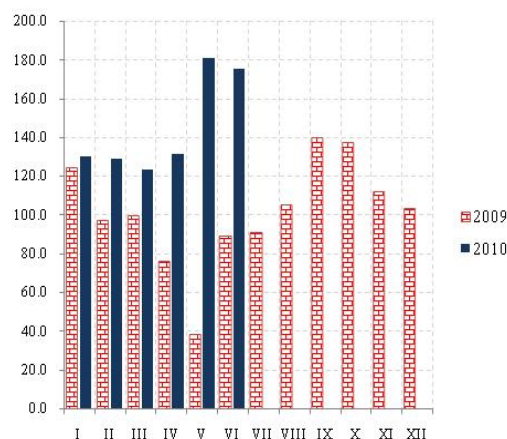
Željeznički saobraćaj / Railway transport

Ø 2009 = 100

Putnički / Passengers



Robni / Goods

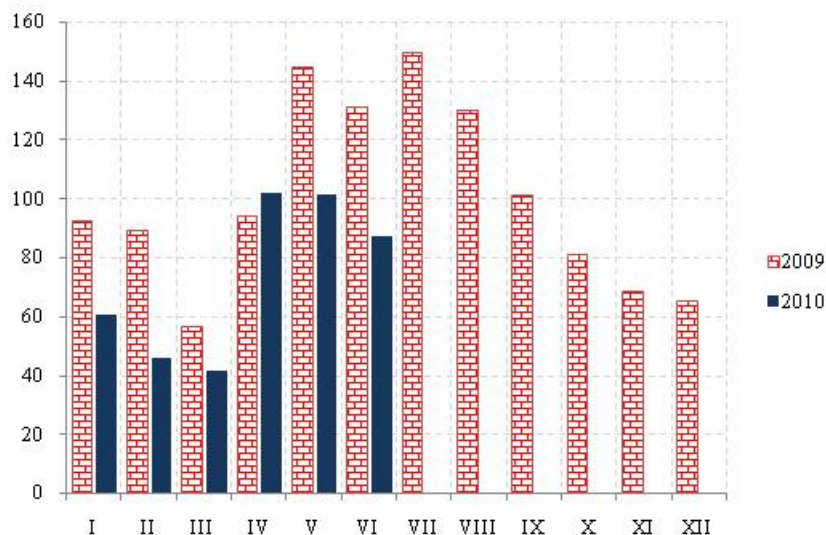


	ŽELJEZNIČKI SAOBRAĆAJ / RAILWAY TRANSPORT					
	Putnički / Passenger			Robni / Goods		
	indeks Index	putnici u 000 Passengers, thousands	putnički km u 000 Passenger kilometres in thousands	Indeks Index	prevoz robe u 000 t Goods in thousands tonnes	tonski km u 000 Tonne- kilometres in thousands
2005	123.8	1137	122920	132.5	1182	132782
2006	132.5	1067	131500	181.0	2494	182163
2007	110.8	999	110000	183.9	1761	184957
2008	125.9	1031	125000	192.8	1740	183854
2009	100.0	852	99200	100.0	854	100546
Ø I - VI 2009	91.7	62	7583	87.2	66	7308
Ø I - VI 2010	84.7	52	7000	144.8	95	12134
2009						
VI	151.1	100	12500	88.9	57	7445
VII	169.2	120	14000	90.4	52	6743
VIII	169.2	115	14000	104.8	75	8782
IX	87.0	75	7200	139.5	88	11686
X	72.5	60	6000	137.1	83	11481
XI	61.4	50	5000	111.5	77	9351
XII	90.7	60	7500	103.3	84	8655
2010						
I	84.6	45	7000	130.0	78	10893
II	133.1	40	11000	128.9	77	10797
III	66.5	40	5500	123.1	82	10311
IV	66.5	50	5500	131.1	91	10984
V	72.6	65	6000	180.5	118	15120
VI	84.7	70	7000	175.4	121	14698
I-VI 2010/I-VI 2009	92.3	83.9	92.3	166.0	143.9	166.0

SAOBRAĆAJ, SKLADIŠTENJE I VEZE
TRANSPORT, STORAGE AND COMMUNICATIONS

Drumski saobraćaj - Putnički / Road transport - passengers

Ø 2009 = 100

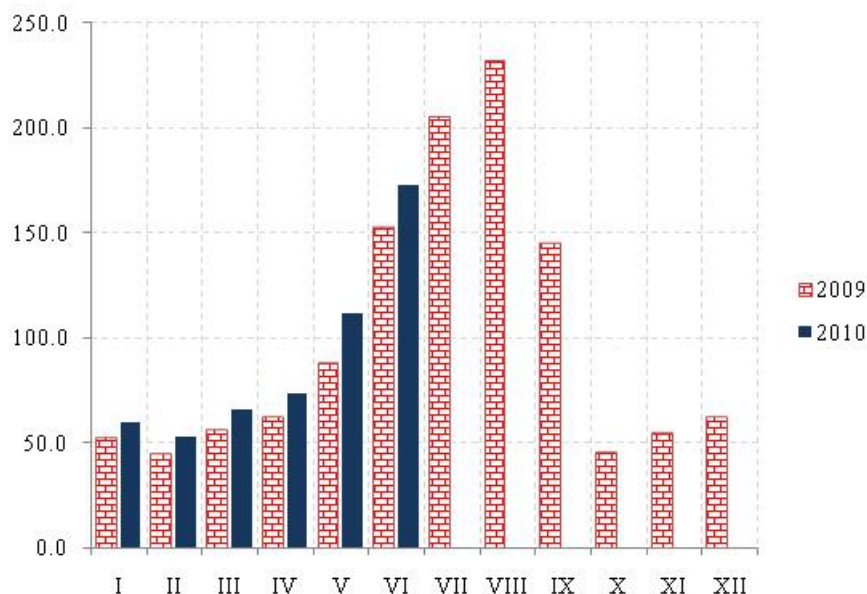


	DRUMSKI SAOBRAĆAJ / ROAD TRANSPORT							
	PUTNIČKI / PASSENGERS				ROBNI / GOODS			
	indeks Index	putnici u 000 Passengers, thous.	putnički km u 000 Passenger kilometres in thous.	autobuski km u 000 Bus kilometres in thous	indeks Index	roba u 000 tona Goods in thousands tonnes	tonski km u 000 Tonne- kilometres in thous.	kamionski km u 000 Truck kilometres in thous.
2005	83.2	4302	84883	9593	35.1	1857	61100	9365
2006	112.6	4825	114695	16809	41.8	1961	72724	15167
2007	138.5	5738	141247	17630	52.8	2131	91786	16269
2008	121.1	5503	123421	18068	78.8	2468	137058	14857
2009	100.0	5536	101928	16272	100.0	1724	179288	11667
Ø I - VI 2009	101.0	439	8578	1284	93.6	163	13991	1001
Ø I - VI 2010	72.9	434	6195	1634	79.4	162	11870	1100
2009								
VI	130.8	463	11107	1509	116.0	125	16800	904
VII	149.2	598	12677	1586	113.3	147	16417	1025
VIII	129.8	642	11028	1687	102.5	141	14850	866
IX	101.0	508	8576	1461	119.0	157	17246	1090
X	80.7	422	6852	1354	66.5	106	15074	858
XI	68.4	373	5817	1244	96.0	107	13915	916
XII	64.9	362	5508	1237	123.1	89	17842	905
2010								
I	60.4	325	5132	1455	57.0	169	8517	811
II	45.9	358	3901	1387	44.4	109	6631	543
III	41.1	223	3489	1297	104.0	138	15541	1201
IV	101.9	661	8643	1400	90.7	189	13549	1175
V	101.4	475	8609	2302	105.1	196	15699	1401
VI	87.0	564	7394	1964	75.5	170	11280	1466
I-VI 2010/I-VI 2009	72.2	98.4	72.2	127.3	84.8	99.4	84.8	109.9

SAOBRAĆAJ, SKLADIŠTENJE I VEZE
TRANSPORT, STORAGE AND COMMUNICATIONS

Ø 2009 = 100

Vazdušni saobraćaj - putnički / Air transport - passengers



	GRADSKI SAOBRAĆAJ LOCAL TRANSPORT		VAZDUŠNI SAOBRAĆAJ, PROMET NA AERODROMIMA AIR TRANSPORT, TRAFFIC AT AIRPORTS		
	indeks Index	prevezeno putnika u 000 Passengers in thousands	PUTNIČKI / PASSENGERS		ROBNI / GOODS
			indeks Index	prevoz putnika Transport of passengers	prevoz robe u tonama Transport of goods in tonnes
2005	400.4	2177	73.6	697740	1011
2006	292.5	1591	87.9	833715	1067
2007	274.0	1491	108.1	1024491	1320
2008	284.6	1547	117.1	1109095	1490
2009	100.0	544	100.0	956405	1478
Ø I - VO 2009	106.0	48	75.9	60473	76
Ø I - VO 2010	86.1	39	89.4	71228	149
2009					
VI	59.6	27	152.5	121559	83
VII	87.3	26	205.7	163959	111
VIII	66.2	30	231.8	184744	77
IX	110.3	50	145.3	115783	75
X	112.5	51	45.2	36053	109
XI	112.5	51	54.3	43309	296
XII	108.1	49	62.4	49718	357
2010					
I	79.5	36	59.9	47754	47
II	88.3	40	52.7	41993	55
III	90.5	41	65.7	52324	57
IV	92.7	42	73.6	58640	63
V	92.7	42	111.7	89026	294
VI	72.8	33	172.7	137628	378
I-VI 2010/I-VI 2009	81.3	81.3	117.8	117.8	196.1

SAOBRAĆAJ, SKLADIŠTENJE I VEZE / *TRANSPORT, STORAGE AND COMMUNICATIONS*POMORSKI SAOBRAĆAJ / *MARINE TRANSPORT*

	Prevoz robe / <i>Transport of goods</i>			Promet u lukama (u tonama) / <i>Turnover in harbours (tonnes)</i>				
	Indeks <i>Index</i>	u 000 t <i>In thous. tonnes</i>	tonske milje u hilj. <i>Tonne milles in thousands</i>	Indeks <i>Index</i>	ukupno <i>Total</i>	unutrašnji promet <i>Internal turnover</i>	izvoz ¹⁾ <i>Export</i>	uvoz ²⁾ <i>Import</i>
2005	85.0	60	232	137.7	2039211	442	1166959	851211
2006	139.2	818	380	134.2	1988204	116	1027208	941905
2007	149.5	785	408	139.9	2071310	1825	791509	1280327
2008	128.9	595	352	131.6	1949409	8350	683990	1219948
2009	100	541	273	100	1481069	-	613696	829491
Ø I - VI 2009	61.7	44	14	99.8	123199	-	49602	713065
Ø I - VI 2010	66.1	42	15	113.4	139946	-	66684	54373
2009								
VI	51.5	51	12	100.3	123852	-	57424	65095
VII	230.3	45	52	108.4	133767	-	62765	68956
VIII	244.1	37	55	111.1	137129	-	54236	79868
IX	126.0	67	29	117.7	145229	-	50015	88445
X	80.6	46	18	101.8	125677	-	58857	64865
XI	71.8	43	16	84.0	103660	-	50309	50467
XII	66.1	35	15	78.1	96411	-	39903	49051
2010								
I	52.9	27	12	93.8	115756	-	64641	49948
II	49.8	29	11	90.1	111176	-	64127	41362
III	74.8	50	17	90.7	111961	-	55091	52544
IV	61.7	45	14	1701	209956	-	58280	52613
V	74.8	53	17	102.2	126164	-	67239	58629
VI	70.5	47	16	133.4	164661	-	90728	71140
I-VI 2010/I-VI 2009	100.9	94.0	100.9	113.6	113.6	-	134.4	76.3

¹⁾Tranzit utovar prikazan kod izvoza ²⁾Tranzit istovar prikazan kod uvoza / ¹⁾Transit loading presented in export. ²⁾Transit loading presented in import.

P T T SAOBRAĆAJ / *POSTAL, TELEGRAPH AND TELEPHONE (PTT) COMMUNICATIONS*

	Poštanske usluge / <i>Postal services</i>		Telegrafske usluge / <i>Telegraph services</i>		Telefonske usluge / <i>Telephone services</i>	
	pisma u 000 komada <i>Lletters in thousands pcs.</i>	paketi u 000 komada <i>Packages in thousands pcs.</i>	uputnice u 000 komada <i>Postal orders in thousands pcs.</i>	telegr. u 000 komada <i>Telegraphs in thousands pcs.</i>	fiksna telefonija <i>Fixed telephony</i>	mobilna telefonija <i>Mobile telephony</i>
					minuti u 000 <i>Minutes in thous.</i>	minuti u 000 <i>Minutes in thous.</i>
2005	16185	56	65	572	876231	-
2006	17396	30	45	581	862596	488802
2007	18291	23	44	589	864471	660168
2008	20521	25	37	507	650567	1027704
2009	21564	25	34	476	513213	1166274
Ø I - VI 2009	1660	2	3	41	39553	93403
Ø I - VI 2010	1691	2	3	36	32409	102129
2009						
VI	1653	2	3	40	39645	96173
VII	1827	3	3	36	61040	102649
VIII	1874	2	3	39	69748	104594
IX	1864	2	3	35	38940	94612
X	1927	2	3	40	34872	99029
XI	1693	2	2	39	34517	97313
XII	2420	2	3	41	36781	107660
2010						
I	1587	2	2	33	32114	100359
II	1649	2	2	35	31417	90049
III	1729	2	3	40	34464	107013
IV	1694	2	2	36	32063	98495
V	1673	2	4	35	32252	105630
VI	1814	2	3	38	32143	111225
I-VI 2010/I-VI 2009	101.9	100.0	100.0	87.8	81.9	109.3

DEPOZITI STANOVNIŠTVA / DEPOSITS BY HOUSEHOLDS

u mil. EUR, stanje na kraju perioda

balance at end-periods, EUR mill..

	Depoziti po viđenju <i>Demand deposits</i>	Oročeni depoziti / <i>Time deposits</i>					Ukupno <i>Total</i>
		do 3 mjeseca <i>Up to 3 months</i>	od 3 mjeseca do godinu dana <i>From 3 months to 1 years</i>	od 1 do 3 godine <i>From 1 to 3 years</i>	preko 3 godine <i>Over 3 years</i>	ukupno <i>Total</i>	
2004.	40,1	5,1	29,7	4,4	0,1	39,2	79,3
2005 ¹⁾	93,5	7,6	55,0	19,4	0,3	82,2	175,7
2006 ¹⁾	294,4	25,8	114,1	64,8	0,3	205,0	499,4
2007 ¹⁾	466,0	145,6	278,3	121,4	8,0	553,1	1019,4
I	299,9	31,1	188,5	4,6	0,4	224,6	524,5
II	333,4	31,2	190,5	14,8	0,4	236,9	570,3
III	367,7	32,1	210,3	9,9	0,5	252,8	620,5
IV	415,9	33,5	176,5	56,9	0,4	267,3	683,3
V	427,3	38,9	181,0	71,5	0,4	291,9	719,2
VI	438,6	49,9	181,3	96,2	0,5	328,1	766,7
VII	475,3	53,1	216,9	118,3	0,4	388,8	864,2
VIII	493,0	84,5	237,0	90,0	0,4	411,9	905,0
IX	479,5	55,0	299,0	89,1	0,5	443,7	923,2
X	474,8	130,9	236,9	109,6	4,6	482,2	957,0
XI	457,1	136,9	248,7	120,5	7,7	513,8	970,9
XII	466,0	145,6	278,4	121,4	8,0	553,4	1019,4
2008							
I	469,6	136,1	294,1	134,3	8,3	572,8	1.042,4
II	465,4	146,0	332,2	106,0	9,2	593,4	1.058,8
III	462,2	140,8	307,0	141,0	10,0	598,8	1.061,0
IV	464,2	150,3	309,9	154,0	10,9	625,1	1.089,3
V	438,7	168,5	313,6	151,6	10,4	644,1	1.083,0
VI	410,2	163,1	330,1	146,6	21,5	664,8	1.075,4
VII	416,9	154,9	330,2	175,3	33,6	694,0	1.110,9
VIII	418,7	168,7	352,2	159,1	24,4	704,4	1.123,1
IX	410,6	166,4	359,6	153,8	23,7	703,5	1.114,1
X	331,5	121,2	337,5	157,2	34,7	650,6	982,1
XI	298,9	87,7	259,5	228,3	23,4	599,0	898,1
XII	302,5	91,0	224,5	221,8	16,5	553,8	856,5
2009							
I	288,0	83,7	233,2	200,4	16,7	534,0	822,3
II	270,8	76,8	237,0	192,0	16,3	522,1	792,8
III	281,5	127,7	249,2	107,6	14,5	499,0	780,6
IV	256,6	135,1	264,7	92,0	14,0	505,8	762,4
V	248,7	140,9	254,2	89,2	14,0	498,3	747,0
VI	248,1	153,6	247,4	86,4	14,8	502,2	750,3
VII	258,0	159,6	245,4	87,3	13,6	506,0	764,0
VIII	257,6	158,8	248,9	88,9	13,0	509,5	767,1
IX	259,1	157,1	255,4	85,3	13,0	510,8	769,9
X	267,0	168,1	278,7	85,5	14,3	546,6	813,5
X	267,0	168,1	278,7	85,5	14,3	546,6	813,5
XI	255,5	176,2	284,6	85,6	14,6	561,0	816,5
XII	266,9	164,0	306,3	92,4	14,5	577,3	844,2
2010							
I	260,2	163,3	295,6	93,5	15,4	567,8	828,0

IZVOR: Centralna banka Crne Gore

¹⁾ Stanje na 31.XII

SOURCE: Central Bank of Montenegro

¹⁾ Balance on 31 December

PLATNI BILANS CRNE GORE ¹⁾ u hilj.EUR / *BALANCE OF PAYMENTS OF MONTENEGRO* ¹⁾ EUR thous

Kvartali <i>Quarters</i>	A Ukupno <i>Total</i>	TEKUĆI RAČUN / <i>Current account</i>							
		1 (1.1 - 1.2) Roba / <i>Goods</i>		2 (2.1 - 2.2) Usluge / <i>Services</i>		3 (3.1 - 3.2) Dohoci / <i>Income</i>		4 (4.1 - 4.2) Tekući transferi <i>Current transfers</i>	
		izvoz <i>Export</i>	uvoz <i>Import</i>	prihodi <i>Revenues</i>	rashodi <i>Expenditures</i>	prihodi <i>Revenues</i>	rashodi <i>Expenditures</i>	prihodi <i>Revenues</i>	rashodi <i>Expenditures</i>
		(1+2+3+4)	1.1	1.2	2.1	2.2	3.1	3.2	4.1
2007	-1,060,643	515,816	2,089,996	672,973	233,979	89,240	74,076	100,761	41,381
I	-228,229	120,892	371,906	48,944	45,267	20,118	14,345	23,281	9,946
II	-333,488	129,370	546,455	119,061	52,662	21,162	16,652	24,731	12,043
III	-64,995	136,105	585,922	425,285	57,778	22,733	19,570	22,189	8,036
IV	-433,931	129,449	585,713	79,683	78,272	25,228	23,509	30,560	11,357
2008	-1,564,286	467,384	2,549,724	750,591	351,210	168,642	123,029	109,308	36,248
I	-413,498	103,524	542,084	62,648	69,646	38,096	17,633	21,911	10,314
II	-498,210	140,326	713,814	133,430	93,951	39,920	24,892	29,483	8,711
III	-230,060	125,834	739,414	465,465	102,552	45,959	45,396	28,819	8,775
IV	-422,519	97,700	554,412	89,048	85,062	44,667	35,107	29,096	8,448
2009 ²⁾	-896,271	296,284	1,667,780	680,487	295,965	162,722	157,395	117,681	32,304
I	-258,014	76,504	355,478	55,170	64,194	40,900	26,731	26,402	10,587
II	-293,503	57,904	418,431	125,505	75,806	40,977	45,810	28,183	6,025
III	-16,929	80,020	443,418	428,541	80,395	38,633	62,301	29,517	7,528
IV	-327,824	81,856	450,454	71,271	75,571	42,212	22,553	33,580	8,165

/nastavak /

/ continued /

Kvartali <i>Quarters</i>	B Ukupno <i>Total</i>	KAPITALNI I FINANSIJSKI RAČUN / <i>CAPITAL AND FINANCIAL ACCAUNT</i>					Neto greške i omaške <i>Net errors and omissions</i>
		račun kapitala <i>Capital account</i>	2 (2.1+2.2+2.3+2.4) Finansijski račun / <i>Financial account</i>			promjena rezervi CBCG <i>Change in CBM reserves</i>	
			direktne investicije-neto <i>Direct investments - net</i>	portfolio investicije- neto <i>Portfolio investments - net</i>	ostale investicije- neto <i>Other investments - net</i>		
	(1+2)	1	2.1	2.2	2.3	2.5	(A+B)
2007	1,059,976	-1,435	557,711	5,189	649,311	-150,800	667
I	252,474	-642	135,888	9,731	141,123	-33,626	-24,245
II	292,712	-734	199,838	-8,307	182,195	-80,280	40,776
III	-61,863	39	63,713	14,788	-54,594	-85,808	126,858
IV	576,653	-97	158,273	-11,023	380,586	48,914	-142,722
2008	1,329,746	-463	551,709	-15,528	638,726	155,301	234,540
I	407,594	-77	143,559	-7,636	267,042	4,707	5,904
II	385,120	-24	169,418	-3,571	259,671	-40,374	113,090
III	6,583	-209	134,003	1,620	-82,326	-46,505	223,477
IV	530,450	-153	104,729	-5,940	194,340	237,474	-107,931
2009 ²⁾	539,817	1,959	910,907	-41,851	-274,607	-56,590	356,454
I	214,396	-3	89,823	-10,469	73,278	61,768	43,618
II	182,665	1,995	236,463	-18,651	-50,037	12,896	110,838
III	-163,966	-39	444,797	-3,929	-425,242	-179,552	180,895
IV	306,721	6	139,825	-8,802	127,393	48,298	21,103

¹⁾ IZVOR: Centralna banka Crne Gore¹⁾ SOURCE: Central Bank of Montenegro²⁾ Prethodni podaci²⁾ Preliminary data

METODOLOŠKA OBJAŠNENJA**STANOVNIŠTVO****Izvori podataka**

Podaci o rođenim i umrlim licima prikupljaju se iz matičnih registara rođenih i umrlih za koje je nadležno Ministarstvo unutrašnjih poslova i javne uprave.

Podaci o zaključenim brakovima prikupljaju se od nadležnih organa lokalne uprave.

Podaci o razvedenim brakovima prikupljaju se od sudova nadležnih za razvod braka.

Podaci o unutrašnjim migracijama prikupljaju se iz registara za koje je nadležno Ministarstvo unutrašnjih poslova i javne uprave.

Obuhvatnost– Podaci o stanovništvu obuhvataju broj rođenih, umrlih i vjenčanih, razvedenih i preseljenih lica registrovanih u nadležnim organima.

ZAPOSLENOST I ZARADE**Zaposlenost**

Podaci o godišnjem prosjeku zaposlenih izračunati su na osnovu dva stanja (31.marta i 30.septembar), a dobijeni su redovnim polugodišnjim izvještajem o zaposlenim i zaradama zaposlenih (RAD – 1P) kao i na osnovu podataka koji su regulisani Zakonom o evidencijama u oblasti rada i zapošljavanja ("Sl.list RCG", br.69/03), a vode ih Fondovi Penzijsko invalidskog osiguranja i Zdravstva, koje Zavod za statistiku redovno preuzima od istih.

Podaci o mjesečnom broju zaposlenih dobijeni su na osnovu redovnog mjesečnog istraživanja o zaposlenima i zaradama zaposlenih (Rad – 1, koje se vrši na bazi uzorka i prijava – odjava osiguranika koje vode Republički Fond Penzijsko invalidskog osiguranja i Fond Zdravstva.

Obuhvatnost

Polugodišnjim izvještajem o zaposlenima i zaradama zaposlenih (RAD – 1P) obuhvaćena su preduzeća, ustanove i organizacije svih oblika svojine. Ovim istraživanjem su obuhvaćeni strani državljani zaposleni u našoj zemlji. Ne smatraju se zaposlenima lica koja rade po ugovoru o djelu ili po ugovoru o obavljanju privremenih i povremenih poslova.

Podaci o nezaposlenim licima obuhvataju sva lica koja su kod Zavoda za zapošljavanje registrovana kao nezaposlena.

Definicije

Pod pojmom zaposleni podrazumijevaju se sva lica koja imaju zasnovan radni odnos sa preduzećem, ustanovom ili organizacijom ili individualnim poslodavcem bez obzira da li su radni odnos zasnovali na neodređeno ili određeno vrijeme i da li rade puno ili kraće od punog radnog vremena. Od 1.januara2009.godine u ukupan broj zaposlenih u Crnoj Gori ulaze i zaposleni stranci na osnovu čl.1 Zakona o zapošljavanju i radu

METHODOLOGICAL EXPLANATIONS**POPULATION**

Data sources – Data on born and dead persons are collected from the Registry Offices of born and dead which is under the jurisdiction of the Ministry of Internal Affairs and Public Administration

Data on marriages are collected by the authorities of local governments.

Information on divorces are collected from the competent courts for divorce.

Data on internal migrations are collected from the Register which is under the jurisdiction of Ministry of Internal Affairs and Public Administration.

Coverage and definitions – Data on population include the number of births, deaths and marriages, divorced and resettled persons registered in the competent authorities

EMPLOYMENT AND EARNINGS**Employment**

The data on annual average of employees are calculated on the basis of two reports (31 March and 30 September) and they are obtained from the regular semiannual report on employees and their earnings (RAD-1P), as well as on the basis of data regulated by the Law on Records in Labor and Employment ("Official Gazette of Republic of Montenegro", No. 69/03), and managed by the Fund for Pension and Disability Insurance and Health Fund.

The data on monthly number of employees are obtained by regular monthly survey of employees and their earnings (RAD-1), conducted on the basis of sample, and registration / withdrawal of beneficiaries in Republic Health Fund and Fund for Pension and Disability Insurance.

Coverage

The Semiannual Report on employees and their earnings (RAD-1) includes enterprises, institutions and organizations of all types of ownership. This survey includes foreign citizens employed in our country. The persons that work pursuant to a job contract or a contract on casual engagement are not considered as employed. Data about unemployed persons include all persons which are registered as unemployed in the Employment Agency.

Definitions

The term "employees" refers to all persons being employed in enterprises, institutions, organizations or by self-employed individuals no matter whether their employment status is based on a permanent or temporary contract and whether they work on a full-time or part-time basis. From the 1st January 2009 in the total number of employees enter also employed foreigners according to the article 1 of the Law on Employment and work of the

stranaca ("Sl.list CG", br. 22 od 02.04.2008.godine), a stupio na snagu 01.januara 2009.godine „stranac se može zaposliti, odnosno, raditi u Crnoj Gori pod uslovima utvđenim zakonom, kolektivnim ugovorom, potvrđenim i objavljenim međunarodnim ugovorom i opšte prihvaćenim pravilima međunarodnog prava"

Nezaposleni

Definicije

Podaci o broju nezaposlenih lica preuzeti su od Zavoda za zapošljavanje i obuhvataju samo lica koja su registrovana kod ove službe.

U grupi „lica koja traže zaposlenje“ obuhvaćena su lica shodno članu 4 Zakona o zapošljavanju, stav prvi: „nezaposlenim licem, u smislu ovoga Zakona, smatra se lice od 15-65.godina života koje se nalazi na evidenciji Zavoda za zapošljavanje Crne Gore (u daljem tekstu: Zavod) i aktivno traži zapolenje, kao i strani državljanin ili lice bez državljanstva, koji ima odobrenje za stalno nastanjenje i odobrenje za zasnivanje radnog odnosa u Crnoj Gori”.

U grupi „lica koja primaju novčanu naknadu“ obuhvaćena su lica koja shodno članu 48 Zakona o zapošljavanju Crne Gore, stav prvi: „pravo na novčanu naknadu ostvaruje osiguranik kojem je u smislu Zakona o radu prestao radni odnos bez njegovog zahtjeva, saglasnosti ili krivice, a koji je bio u radnom odnosu kod jednog ili više poslodavaca sa punim radnim vremenom najmanje 9 mjeseci neprekidno ili 12 mjeseci sa prekidima u posljednjih 18 mjeseci (u daljem tekstu: staž osiguranja), ako se prijavi Zavodu u roku od 30 dana od dana prestanka radnog odnosa“.

U grupi „nezaposlene osobe” koje su se tokom izvještajnog mjeseca prijavile na evidenciju Zavoda za zapošljavanje Crne Gore obuhvataju grupe novoprijavljenih lica”:

- Prvi put, nema zapošljavanja – odnosi se na lica koja su se prvi put prijavila na evidenciju Zavoda, a do tada nijesu bila zapošljavana;
- Prvi put, ima zapošljavanja – lica koja su se prvi put prijavila na evidenciju Zavoda, a do tada nijesu bila zapošljavana;
- Nije prvi put, nema zapošljavanja- lica koja su se više puta prijavljivala na evidenciju Zavoda, a nisu bila zapošljavana;
- Nije prvi put, ima zapošljavanja – lica koja su se više puta prijavljivala na evidenciju Zavoda, a bila su zapošljavana;

U grupi „prestanak vođenja evidencije“ obuhvaćena su lica koja shodno članu 86 Zakona o zapošljavanju, stav prvi: „evidencija o nezaposlenom licu prestaje da se vodi ako:

foreigners (Official Gazette of Montenegro, number 22 from 2nd April, 2008), which took effect on the 1st January 2009”strangers can be employed, i.e., work in Montenegro under condition established in Law, collective contract, confirmed and published international contract and generally accepted regulation of international Law”

Unemployed

Definitions

Data about unemployed persons are taken from the Employment Agency and include only persons registered at the Agency.

The group “persons looking for employment” includes persons defined according to the article 4, par. 1 of the Law on Employment as: “an unemployed person, according to this Law, is a person aged 15-65 which is in the records of the Employment Agency of Montenegro (furthermore: EAM) and is actively looking for employment, as well as a foreigner or a person without citizenship, who has the permission for permanent residence as well as the permission for starting work in Montenegro”.

The group” persons receiving social benefits” includes persons who, according to the article 4, par. 1 of the Law on Employment: ‘receive the monetary benefit for stopped working without person’s request, compliance or guilt, and who was working for one ore more employers the full working time for at least 9 months without a break or 12 months with breaks in the last 18 months (furthermore: duration of insurance), if he/she reports to the EAM within 30 days of stopping to work.

The group “unemployed persons“ who reported themselves to the records of the Employment Agency of Montenegro within the reporting month includes the groups of newly reported persons:

- *First time, no employment– refers to persons who are reported for the first time in the records of EAM, and were not previously employed;*
- *First time, with employment – persons who are reported for the first time in the records of the EAM, and used to be employed;*
- *Not-first time, no employment – persons who reported to the records of EAM several times, and were not employed;*
- *Not-first time, no employment persons who reported to the records of EAM several times, and used to be employed;*

The group “stopped keeping records” includes persons who, according to the article 86, refer to the par. 1 of the Law on Employment: “records on the unemployed person is stopped to be kept if:

1. zaključi ugovor o radu sa punim radnim vremenom; se odjavi iz evidencije nezaposlenih lica;
2. odbije uključivanje ili ne izvršava obaveze utvrđene ugovorom o uključivanju u program aktivne politike zapošljavanja;
3. postane vlasnik ili većinski suvlasnik preduzeća;
4. postane preduzetnik;
5. odbije odgovarajuće zaposlenje;
6. nije dalo tačne podatke o ispunjavanju uslova za sticanje statusa nezaposlenog lica;
7. navrš 65 godina života;
8. ostvari pravo na starosnu ili invalidsku penziju;
9. ostane potpuno nāposoban za rad;
10. ode na izdržavanje kazne zatvora u trajanju dužem od šest mjeseci;
11. aktivno ne traži zaposlenje;
12. je radno angažovano suprotno propisima o radnim odnosima („rad na crno“);
13. postane osiguranik – zemljoradnik, u skladu sa Zakonom o penzijskom i invalidskom osiguranju“.

- 1 the person signs contract on work with full working time; is signed off from the records of the unemployed persons;
- 2 refuses inclusion or does not perform obligations specified in the agreement on the inclusion in the programme of active employment policy;
- 3 becomes the owner or major co-owner of an enterprise;
- 4 becomes an entrepreneur;
- 5 refuses appropriate employment;
- 6 did not give correct data on meeting conditions for getting the unemployment status
- 7 is 65 years old;
- 8 gets right to the old-age and survivor pensions;
- 9 is completely incapable to work;
- 10 is serving the imprisonment punishment longer than 6 months;
- 11 is not actively looking for employment;
- 12 is working contrary to the regulations on labour (“unregistered work”);
- 13 becomes insured by agriculture, in compliance with the Law on pension and disability insurance.

ZARADE

Izvori podataka

Podaci o prosječnim zaradama prikazuju zarade isplaćene u mjesecu i dobijeni su iz redovnog mjesečnog istraživanja Mjesečni izvještaj o zaposlenim i zaradama (obrazac RAD-1).

Obuhvatnost

Istraživanjem su obuhvaćena preduzeća, ustanove, zadruge ili organizacije, svih oblika svojine kao i njihove jedinice u sastavu, po organizaciono teritorijalnom principu, počev od nivoa opštine.

Definicije

“Zarada zaposlenog je bruto zarada koja obuhvata zaradu za obavljeni rad i vrijeme provedeno na radu, uvećanu zaradu, naknadu zarade i druga lična primanja, koja podležu plaćanju poreza na dohodak fizičkih lica, utvrđena zakonom, kolektivnim ugovorom i ugovorom o radu.” Član 78 Zakona o radu (“Sl.list CG”, br. 49/08) i član 1 Zakona o izmjenama i dopunama Zakona o doprinosima za obavezno socijalno osiguranje (“Sl.list CG”, br. 79 od 23.decembra 2008.godine).

Zarada se uvećava u skladu sa kolektivnim ugovorom i ugovorom o radu za: rad duži od punog radnog vremena; noćni rad; rad u dane državnih i vjerskih praznika koji su zakonom utvrđeni kao neradni dani; minuli rad i u drugim slučajevima utvrđenim kolektivnim ugovorom i ugovorom o radu.

WAGES

Data sources

The data on average wages present wages paid out in a month, and are obtained from regular monthly survey Monthly report on employees and their earnings (questionnaire RAD-1).

Coverage

The survey covers enterprises, institutions, cooperatives or organizations as well as their composite units of all kinds of ownership, by organizational and territorial principle, starting from the level of municipality.

Definitions

Wage of the employee is the gross earning that is consisted of earning made for work performed and time spent at work, increased earning, remuneration of earnings and other personal incomes, which are subject to income tax of natural persons, and it is determined by collective agreement and the agreement on the work.” Article 78 of the Law on work (“Official Gazette of Montenegro”, number 49/08) and article 1 of the Law on Amendments to the Act on contributions for compulsory social insurance (“Official Gazette of Montenegro”, number 79 of 23rd December, 2008)

Earnings increases in accordance with the collective agreement and the agreement on the work for: work longer than full working hours, night work, work in the days of national and religious holidays that are fixed by law as non-working days, past performance in other cases established by collective agreement and the agreement on work.

Prosječna zarada (bruto) izračunava se tako što se ukupno isplaćena masa zarada u mjesecu dijeli sa brojem zaposlenih na koje se odnose izvršene isplate.

Zaradu bez poreza i doprinosa (neto) čini zarada (bruto) umanjena za poreze i doprinose na teret zaposlenog.

Indeks realne prosječne zarade bez poreza i doprinosa (neto) predstavlja odnos između indeksa nominalne prosječne zarade bez poreza i doprinosa (neto) i indeksa potrošačkih cijena.

CIJENE

CIJENE PROIZVODJAČA INDUSTRIJSKIH PROIZVODA

Pod prodajnom cijenom proizvođača industrijskih proizvoda podrazumijeva se cijena po kojoj proizvođači prodaju svoje proizvode u najvećim količinama nadomaćem tržištu. U cijenu ulazi regres koji ostvaruje prodavac a odbija se rabat, popust, kasa skonto i sl, ako ih prodavac odobrava kupcima. U cijenu ne ulazi porez na dodatu vrijednost.

Ove cijene prikupljaju se mjesečnim izvještajima koje neposredno dostavljaju izabrana preduzeća za oko 250 industrijskih proizvoda. Izbor industrijskih preduzeća izvršen je prema njihovom učešću u ukupnoj realizaciji određene oblasti.

Prosječne mjesečne cijene računaju se ponderisanjem tekućih mjesečnih cijena odgovarajućih proizvoda, a godišnje prosječne cijene proizvođača industrijskih proizvoda predstavljaju neponderisani prosjek mjesečnih cijena.

Indeksi cijena izračunavaju se ponderima na bazi podataka o realizaciji industrijske proizvodnje. Svake godine vrši se korekcija pondera, a novi ponderi izračunavaju se svake pete godine.

Indeksi cijena proizvođača industrijskih proizvoda preračunavaju se početkom svake godine na prethodnu godinu kao bazu.

POTROŠAČKE CIJENE

Potrošačke cijene su cijene po kojima trgovina na malo, individualni proizvođači i vršioci usluga prodaju svoje proizvode i usluge krajnjim potrošačima, uključujući sve poreze i takse koje se plaćaju u prometu na malo.

Potrošačke cijene prate se u četiri grada Crne Gore: Podgorici, Nikšiću, Kotoru i Pljevljima, koji predstavljaju veće tržišne centre.

Calculation of the average gross earnings is done so that the total sum of all monthly earnings is divided by the number of employees to whom the paid earnings refer.

Net salaries and wages are tax and contributions deducted (gross) salaries and wages.

Index real average wage without taxes and contributions is the relationship between indices of nominal average wage without taxes and contributions(net), and the index of consumer prices.

PRICES

PRODUCER PRICES OF INDUSTRIAL PRODUCTS

Producer prices of industrial products is the price according to which the producers sell their products in the most numerous quantities on the domestic market. The price also includes the regress achieved by the producer, and deduces the rebate, discounts, cash sconto, etc., if the producer approves them to the buyer.

The price does not include value added tax..

These prices are collected through the monthly surveys submitted directly by the chosen enterprises for about 250 industrial products. The list of industrial enterprises is done on the basis of their participation in the total realization of certain area.

Average monthly prices are calculated by weighting the current monthly prices of corresponding products, and annual average producer prices of industrial products

present the un-weighted average of the monthly prices.

Price indexes are calculated with weights based on the data on the total realization of industrial production. The correction of weights is done every year, and the new weights are calculated every five years.

Indices of producer prices of industrial products are recalculated in the beginning of each year using the previous year as the base year.

CONSUMER PRICES

Consumer prices are the prices at which the retail shop, custom manufacturers and service providers sale their products and services to consumers, including all taxes and fees that are paid in the small.

Consumer prices are monitored in the four cities of Montenegro: Podgorica, Niksic, Pljevlja and Kotor, which represent major market centers.

Cijene industrijsko-neprehrambenih proizvoda snimaju se jedanput mjesečno u periodu od 3. – 10.-og, industrijsko - prehrambenih proizvoda od 11. - 14.-og, usluga od 14-16.-og, a cijene poljoprivrednih proizvoda od 15 - 21.-og u mjesecu.

Prosječne mjesečne cijene za grad kod svih proizvoda i usluga, računaju se neponderisanom geometrijskom sredinom, dok se prosječne mjesečne cijene za Crnu Goru računaju na bazi prosječnih cijena iz četiri grada koje se ponderišu strukturom potrošnje domaćinstava.

Prosječne godišnje potrošačke cijene predstavljaju neponderisani prosjek cijena za dvanaest mjeseci.

Početkom svake godine vrši se korektura pondera na bazi rasta potrošačkih cijena. Indeksi potrošačkih cijena preračunavaju se početkom svake godine na prethodnu godinu kao baznu.

ŠUMARSTVO

Izvori podataka i obuhvatnost

Podaci se prikupljaju mjesečnim izvještajem ŠUM-22. Ovim izvještajem obuhvaćena su šumarska i druga preduzeća koja u državnim šumama vrše proizvodnju šumskih sortimenata, bez obzira da li im je proizvodnja šumskih sortimenata osnovna djelatnost ili nije.

Definicije

Indeks fizičkog obima iskorišćavanja šuma obračunava se na osnovu podataka o proizvodnji šumskih sortimenata, prema nomenklaturi proizvoda i ponderacionih koeficijenata. Količine predstavljaju neto drvenu masu sortimenata izraženu u kubnim metrima. Za izračunavanje indeksa proizvodnje šumskih sortimenata kao koeficijenti ponderacije koriste se prosječne prodajne cijene proizvoda.

INDUSTRIJA

Izvori podataka

Prikazani podaci prikupljaju se mjesečnim izvještajima industrije na obrascu IND-1.

Obuhvatnost

Mjesečnim izvještajem industrije obuhvataju se sva preduzeća kao i njihovi djelovi koji obavljaju industrijsku djelatnost, odnosno koji su prema Klasifikaciji djelatnosti razvrstani u sektore: Vadenje rude i kamena, Preradivačka industrija i Proizvodnja i snabdijevanje električnom energijom, gasom i vodom. Preduzeća neindustrijskih djelatnosti su izvještajne jedinice ako u svom sastavu imaju jedinicu koja se bavi industrijskom djelatnošću.

Prices non-industrial products are recorded once a month for a period of 3 - 10 th, industrial - food products from 11 - 14 th, provider of 14-16-th, and the prices of agricultural products 15-21-th of the month.

Average monthly prices for the city for all products and services are calculated by non-weight geometric mean, while the average monthly prices for Montenegro calculated based on average price in the four cities that weighted by structure of household consumption.

Average annual consumer prices represent the average non-weight average prices for twelve months.

Beginning of each year is done proofreading weights on the basis of consumer price growth. Consumer price converted at the beginning of each year to the previous year as a base.

FORESTRY

Data sources and coverage

The data are collected on the basis of the monthly survey ŠUM-22. This report covers forestry and other enterprises dealing with production of forest assortments in state forests, disregarding if forest assortments production is their basic activity or not.

Definitions

The physical volume index of forests exploitation is calculated on the basis of data on the production of forest assortments, according to the present nomenclature of products and weights coefficients. Quantities represent net wood mass of assortments expressed in cubic meters. In order to calculate the index of forest assortments production, average purchase prices are used as weighting coefficients.

INDUSTRY

Sources of data

The shown data are collected by monthly surveys (through the questionnaire IND-1).

Coverage

Monthly industry survey includes all enterprises, as well as their parts, performing the industrial activity, i.e. those that are according to the Classification of Activities classified into the following sectors: Mining and quarrying, Manufacturing, Electricity, gas, and water supply. Enterprises of non-industrial activities represent reporting units if they have in their structure a unit dealing with industrial production.

Nomenklatura

Proizvodnja se iskazuje prema Nomenklaturi industrijskih proizvoda, koju čine industrijski proizvodi i usluge razvrstane po djelatnostima u kojima su proizvedeni.

Indeksi

Indeks fizičkog obima industrijske proizvodnje formiran je na osnovu podataka o količinama proizvoda i ponderacionog sistema. Podaci o količinama daju se prema Nomenklaturi proizvoda i sirovina.

Za obračun indeksa fizičkog obima industrijske proizvodnje ponderi izražavaju prosječnu dodatu vrijednost po jedinici proizvoda.

GRAĐEVINARSTVO

Izvor podataka i obuhvat

Prikazani podaci prikupljaju se tromjesečnim izvještajem građevinarstva GRAĐ-31, kojim su obuhvaćena preduzeća iz oblasti građevinarstva, kao i jedinice koje obavljaju građevinsku djelatnost a nalaze se u sastavu negrađevinskih preduzeća. Podaci se prikupljaju od preduzeća iz Crne Gore kao i poslovnih jedinica stranih preduzeća koja obavljaju građevinsku djelatnost u Crnoj Gori.

Definicije

Vrijednost izvršenih građevinskih radova izražena je u tekućim cijenama i obuhvata sav ugrađeni građevinski materijal i utrošeni rad. Podaci o vrijednosti izvršenih građevinskih radova daju se na osnovu privremenih situacija koje ispostavljaju izvođači radova. U vrijednost nijesu uključeni troškovi nabavke zemljišta, projektovanja, nadzora i PDV-a. Podaci o vrijednosti izvedenih radova odnose se na radove izvedene u izvještajnom periodu na završenim i nezavršenim građevinama.

Broj radnika – Obuhvata sve radnike koji na gradilištima obavljaju građevinske, instalaterske i završne radove, bez obzira na kvalifikaciju, vrstu radnog odnosa (ugovor o radu, ugovor o djelu, iznajmljeni radnici itd.) i dužinu rada na gradilištima. Nijesu uključeni zaposleni koji rade na inženjersko-tehničkim, administrativnim i rukovodećim poslovima.

Izvršeni efektivni časovi rada - Obuhvataju stvarno odrađene časove radnika angažovanih na gradilištima u redovnom radnom vremenu kao i u prekovremenim satima.

Nove narudžbe – Predstavljaju ukupnu vrijednost ugovorenih radova između proizvođača i treće strane na osnovu zaključenog ugovora.

Nomenclature

The production is presented according to the Nomenclature of industrial products, including industrial products and services structured according to the activities in which they were produced.

Indices

Index of physical scope of industrial production is formed on the basis of data on product quantities and weighting system.

The data are provided according to the Nomenclature of products and raw materials. In the calculation of the index of physical scope of industrial production, the weights express the average value added per product unit.

CONSTRUCTION

Source of data and coverage

Presented data are collected through a quarterly survey in construction GRAĐ-31, which include enterprises in construction, as well as units performing the activity in construction and are within non-construction enterprises. Data are collected from enterprises from Montenegro as well as the business units of foreign enterprises performing construction activity in Montenegro.

Definitions

Value of finalized construction works is given at current prices and includes all built material and performed work. Data about the value of finalized construction works is given on the basis of temporary situations given by contractors. The value does not include costs of buying the land, engineering, monitoring and VAT. The data on value of finalized work refer to works performed in the reporting period on finished and non-finished construction sites.

Number of workers – Includes all workers who at the construction site perform the construction, installation and final works, no matter to qualification, the type of working contract (contract on work, contract on task, rented workers, etc.) and the duration of work at the construction site. It does not include employees working on engineering-technical, administrative and managerial positions.

Effective working hours – include really performed working hours of workers engaged in the regular working hours, as well as overtime work.

New orders – present the total value of contracted works between producer and third party based on the concluded report.

SPOLJNA TRGOVINA

Izvori i metodi prikupljanja podataka

Izvor podataka za statistiku spoljne trgovine je Jedinstvena Carinska Isprava o izvozu i uvozu robe, koju prilikom carinjenja robe, u ime preduzeća, podnose carinarnicama špediterska preduzeća koja imaju dispoziciju carinskog obveznika.

Obuhvatnost

Pri izvozu obuhvata se sva roba koja potiče iz domaće odnosno proizvodnje iz unutrašnjeg robnog prometa uključujući i tzv. nacionalizovanu robu (roba koja je bila uvezena i ocarinjena, pa se u nepromijenjenom ili doradenom stanju izvozi kao roba porijekla iz Crne Gore na strano tržište). Uvoz obuhvata svu robu uvezenu iz inostranstva koja je ocarinjena i puštena u unutrašnji promet u cilju reprodukcije, investicija ili široke potrošnje.

Uključene su i isporuke raznih dobrotvornih organizacija i privatne poklon pošiljke.

Od januara 2008. god. MONSTAT je u skladu, sa preporukama UN-a i EUROSTAT-a primijenio opšti i specijalni trgovinski sistem.

MONSTAT je do sada koristio ublaženu definiciju specijalnog sistema trgovine. Svjesni ograničenja ublažene definicije specijalnog sistema trgovine, u rezultate spoljnotrgovinske razmjene uključen je i ponovni izvoz robe iz carinskih skladišta i slobodnih carinskih zona koji se registruje po opštem sistemu trgovine.

Opšti sistem trgovine koristi se u slučajevima kada se statistička teritorija zemlje poklapa s njenom ekonomskom teritorijom. Prema tome, opšti sistem trgovine predstavlja širi koncept i kod uvoza obuhvata svu robu koja ulazi na ekonomsku teritoriju zemlje koja prikuplja podatke, sa izuzetkom robe koja je u tranzitu, a kod izvoza obuhvata svu robu koja napušta ekonomsku teritoriju zemlje koja prikuplja podatke, sa izuzetkom robe koja je u tranzitu.

Sistem specijalne trgovine predstavlja užu koncept i koristi se u slučajevima kada se statistička teritorija zemlje poklapa samo sa određenim dijelom njene ekonomske teritorije. Stroga definicija specijalnog sistema trgovine koristi se kada statistička teritorija obuhvata samo slobodno cirkulirajuće područje u okviru koga roba može biti raspoloživa bez carinskih ograničenja, to znači da je ona prošla carinski postupak i da se koristi za domaću upotrebu u cilju reprodukcije, široke potrošnje i investicije.

Izvoz obuhvata svu robu koja napušta slobodno cirkulirajuće područje zemlje koja prikuplja podatke.

EXTERNAL TRADE

Sources and methods of data collection

Data source for external trade statistics is Single Administrative Document on import and export of goods, submitted, on behalf of enterprises, by shipping agents having the disposition of Custom tributary.

Coverage

Export covers all goods of domestic i.e. internal production origin, including so-called nationalized merchandise, (imported goods cleared through the customs, and unchanged exported as goods of Montenegro origin). Import covers all merchandise imported, cleared through the customs, and put on domestic market for reproduction, investment or consumption purposes.

Deliveries of various charity organizations and private gifts are also included.

Due to the recommendations of UN and EUROSTAT, MONSTAT has since January 2008 applied the general and special trade systems.

So far MONSTAT was using the reduced definition of the special trade system. Being aware of the limitations of the reduced definition of special trade system, the results of external trade include the re-export of goods from customs warehouses and free customs zones which is registered according to general trade system.

General trade system is used in cases when the statistical territory matches with its economic territory. Accordingly, the general trade system presents the wider concept and in import it includes all goods coming in the economic territory of the country which collects data, with the exception of goods in transit, and in export it includes all goods leaving the economic territory of the country which collects data, with the exception of goods in transit.

Special trade system presents the narrow concept and is used in cases when the statistical territory of the country matches only with the certain part of its economic territory. The strict definition of the special trade system is used when the statistical territory includes only the free circulating area in which the goods can be available without the customs limitations, which means that it went through the customs procedure and that it is used for domestic use for the purpose of reproduction, wider consumption and investments.

The export includes all goods which leaves the free circulating area of the country which collects the data.

Definicije

Vrijednost robe u spoljnoj trgovini iskazana je na osnovu cijena koje su postigla preduzeća prilikom sklapanja ugovora. Sve vrijednosti obračunate su na bazi pariteta franko granice Crne Gore: FOB-cijene za izvoz, CIF-cijene za uvoz.

Statistička vrijednost robe koja se izvozi jeste fakturna vrijednost robe. Statistička vrijednost robe koja se uvozi jeste vrijednost koja predstavlja carinsku osnovicu. Podaci o vrijednosti su obračunati po tekućim kursovima koji se primjenjuju za utvrđivanje carinske osnovice. Po tekućim kursovima koji se primjenjuju za utvrđivanje carinske osnovice takođe je izvršen obračun troškova transporta, osiguranja, pretovara i sl. koji se plaćaju u stranoj valuti.

Registracija podataka spoljne trgovine po zemljama vrši se po principu zemlje namjene kod izvoza i zemlje porijekla kod uvoza. To znači da se pri izvozu registruje zemlja u kojoj se roba troši i dalje prerađuje, a pri uvozu ona zemlja u kojoj je roba proizvodnjom dovedena u stanje u kome se uvozi

UNUTRAŠNJA TRGOVINA

Izvori podataka

Podaci o unutrašnjoj trgovini preduzeća koja se bave trgovinom na malo, prikupljaju se redovnim mjesečnim istraživanjem. Istraživanje je na bazi uzorka i obuhvaćena su preduzeća koja su u Registru jedinica razvrstavanja prema klasifikaciji djelatnosti razvrstana u sektor trgovine.

Podaci o prodaji i otkupu proizvoda poljoprivrede, šumarstva i ribarstva prikupljaju se mjesečnim izvještajima o realizaciji poljoprivrednih proizvoda sopstvene proizvodnje poljoprivrednih preduzeća i zemljoradničkih zadruga i mjesečnim izvještajem o otkupu poljoprivrednih proizvoda od individualnih gazdinstava.

Obuhvatnost

Statistika unutrašnje trgovine obuhvata i prikazuje promet preduzeća čija je osnovna djelatnost trgovina na malo.

Mjesečnim izvještajima o prodaji i otkupu proizvoda poljoprivrede, šumarstva i ribarstva obuhvaćena su poljoprivredna preduzeća, zemljoradničke zadruge kao i druga preduzeća koja su ovlašćena da vrše otkup proizvoda od individualnih gazdinstava u cilju dalje prerade ili prodaje.

Definitions

Value of goods in external trade statistics is shown on the basis of prices fixed by organizations and enterprises by contractual stipulation. All values have been calculated on the basis of parity free on Montenegrin border, i.e. F.O.B. export prices and C.I.F. import prices.

Statistical value of goods being exported is the invoice value of goods. *Statistical value of goods being imported* is the value representing customs base. Data on values are calculated on the basis of exchange rates applied for establishing customs base. Costs of transport, insurance and reloading, etc. paid in foreign currency are calculated at current exchange rates applied for establishing customs base.

Registration of external trade data by country is carried out according to principle of destination country for the export and origin country for the import. It means that, in case of export, the country in which goods are consumed or further processed is registered, and in case

of import – the country where the goods have been produced in the condition in which they have been imported.

INTERNAL TRADE

Sources of data

Data of internal trade of enterprises dealing with retail trade are collected through regular monthly survey. The survey is sample based and includes all enterprises which are in the Administrative register classified in the sector Trade.

Data about sales and buy out of products in agriculture, forestry and fishery are collected through monthly reports on realization of agricultural products of own production of agricultural enterprises and cooperatives and through monthly report on buying out of agricultural products from individual holdings.

Coverage

Statistics of internal trade covers and presents the turnover of enterprises whose primary activity is retail trade.

Monthly survey on sales and buying out of products in agriculture, forestry and fishing covers agricultural enterprises, agricultural cooperatives, as well as other enterprises authorized to do the buying out of products from individual holdings for future processing or sale.

Definicije

Promet robe u trgovini na malo predstavlja vrijednost prodate robe preduzeća na malo koja je prodana krajnjim potrošačima, odnosno stanovništvu za ličnu potrošnju i upotrebu u domaćinstvu, kao i pravnim i fizičkim licima za obavljanje djelatnosti.

Podaci o prodaji i otkupu proizvoda poljoprivrede, šumarstva i ribarstva obuhvataju vrijednost prodaje proizvoda iz sopstvene proizvodnje preduzeća i zadruga kao i otkup vrijednosti proizvoda od individualnih gazdinstava, koje vrše zato ovlašćene organizacije u cilju dalje prerađivanja ili prodaje.

UGOSTITELJSTVO

Izvori podataka i obuhvatnost

Podaci o ostvarenom prometu u ugostiteljstvu po mjesecima, se procjenjuje na osnovu ocjene trenda prometa, dok se ne dobiju rezultati redovnog tromjesečnog istraživanja, ugostiteljstva. Mjesečne procjene se korijeguju na osnovu dobijenih rezultata.

Podaci o prometu u ugostiteljstvu prikupljaju se tromjesečnom izvještajnom službom za ugostiteljska preduzeća, po grupama usluga. Godišnjom izvještajnom službom prate se ugostiteljska preduzeća i preduzetnici. Mjesečni podaci ne obuhvataju promet preduzetnika.

Definicije

Prikazani promet u ugostiteljstvu predstavlja vrijednost izvršenih ugostiteljskih usluga koje obuhvataju usluge smještaja, ishrane, točenja pića, kao i druge usluge koje se uobičajeno obavljaju u ugostiteljstvu.

TURIZAM

Izvori podataka i obuhvatnost

Podaci o broju dolazaka turista i noćenja prikupljeni su redovnim mjesečnim izvještajem (obrazac TU-11). Izvještaji se sastavljaju na osnovi evidencija u knjigama gostiju. Istraživanje se sprovodi na bazi potpunog obuhvata.

Definicije

Izvještajne jedinice jesu svi poslovni subjekti (preduzeća/trgovačka društva, zadruge, ustanove, itd.) i njihovi dijelovi koji obavljaju djelatnost pružanja usluga smještaja turistima; zdravstvene ustanove za svoje objekte u kojima osobe borave radi medicinske rehabilitacije (osobe same snose naknadu za taj boravak); poslovni subjekti i njihovi dijelovi koji se bave posredovanjem u pružanju smještajnih usluga (putničke agencije); poslovni

Definitions

Turnover of goods in retail trade is the retail value of goods of an enterprise sold to final users, i.e., the population for personal consumption and use in household, as well as to private and physical persons for performing the activity.

Data on sales and buying out of products in agriculture, forestry and fishing cover the value of sale of products from own production of enterprises and cooperatives as well as the buying out of value of products from individual holdings, performed by authorized agencies for further processing or sale.

CATERING

Sources of data and coverage

Data on realized turnover in catering by month are estimated on the basis of estimate of trend of turnover, until the results of the regular quarterly survey in catering are received. Monthly estimates are corrected on the basis of received results.

Data on turnover in catering are collected through quarterly survey survey for enterprises in catering, by groups of services. The annual survey collects data on enterprises in catering and entrepreneurs. Monthly data do not include turnover of entrepreneurs.

Definitions

Presented turnover in catering presents the value of performed catering services including the services of accommodation, food, pouring beverages, as well as other services usually performed in catering.

TOURISM

Sources of data and coverage

Data about arrivals of tourists and overnight stays are collected through regular monthly survey (form TU-11). The reports are compiled on the basis of records in the guest books. The survey is conducted on the basis of full coverage.

Definitions

Reporting units are all business subjects (enterprises/trade companies, cooperatives, institutions, etc.) and their parts performing activity of providing accommodation services to tourists; health institutions for their objects attended by persons for medical rehabilitation (persons pay by themselves for the stay); business subjects and their parts dealing with intermediation in providing accommodation services

subjekti koji se bave posredovanjem u smještaju gostiju u seoskim kućanstvima; turističke zajednice i druga nadležna tijela za privatne sobe, apartmane ili kuće koje neposredno iznajmljuju turisti; poslovni subjekti i njihovi djelovi za svoja odmarališta; poslovni subjekti koji su osnovali ili vode brigu i nadzor nad planinarskim domovima; vojne ustanove za svoje ugostiteljske objekte za smještaj gostiju; poslovni subjekti koji se za vrijeme školskih praznika koriste školama, domovima i sličnim objektima kao privremenim smještajnim kapacitetima; Istraživanjem su obuhvaćene sve pravne osobe i njihovi djelovi te fizičke osobe koje iznajmljuju smještajne objekte turistima (komercijalni objekti).

Turist je svaka osoba koja u mjestu van svog prebivališta provede najmanje jednu noć u ugostiteljskom ili drugom objektu za smještaj turista radi odmora ili rekreacije, zdravlja, studija, sporta, religije, porodice, poslova, javnih misija ili skupova.

U turiste se ne uključuju migranti, pogranični radnici, diplomati, članovi vojnih snaga na redovnim zadacima, izbjeglice, itd.

Prebivalište je mjesto u kojem se osoba nastanila s namjerom da u njemu stalno živi. Turist je registrovan u

svakom mjestu ili objektu u kojem boravi i zbog toga, u slučaju promjene mjesta ili objekta, dolazi do njegova ponovnog iskazivanja, a time i do dvostrukosti u podacima. Prema tome, statistika evidentira broj dolazaka turista, a ne broj turista.

SAOBRAĆAJ, SKLADIŠTENJE I VEZE

Podaci o prevozu putnika i robe u unutrašnjem, pomorskom, vazdušnom i drumskom saobraćaju odnose se na prevoz koji obavljaju saobraćajna preduzeća registrovana u saobraćajnoj djelatnosti, bez obzira da li prevoz obavljaju unutar ili van granica naše zemlje za račun domaćeg ili inostranog korisnika.

Podaci se prikupljaju redovnim mjesečnim i godišnjim statističkim izvještajima saobraćajnih preduzeća.

Željeznički saobraćaj

Prevezeni putnici u unutrašnjem saobraćaju obuhvataju otputovale putnike, otputovale putnike u inostranstvo, prispjele iz inostranstva i putnike u tranzitu. Prevezeni teret obuhvata utovarenu robu u unutrašnjem i u međunarodnom saobraćaju: uvoz, izvoz i tranzit.

Promet na aerodromima

Podaci o prometu putnika i robe na aerodromima dobijeni su na osnovu redovnih mjesečnih i godišnjih izvještaja preduzeća za aerodromske usluge i obuhvataju kompletan promet, odnosno i domaće i strane avione.

(travel agencies); business subjects dealing with intermediation in accomodatin of guests in village houses; touris unions and other competent bodies for private rooms, apartmans or houses directly rented by tourists; business subjects and their parts for their resorts; business subjects which founded or take care an monitor the mountain lodgings; military institutions for their catering objects for accommodation of guests; business subjects which are during school holidays used by schools, hostels and similar objects as temporary placing capacities. The survey covers all legal persons and their parts as well as persons renting accommodation to tourists (commercial objects).

Tourist is a person who spends at least one night in an accommodation facility or some other object for accommodation of tourists, in a place other than his/her place of permanent residence for the reason of vacation or recreation, health, studies, sports, religion, family, business, public missions or meetings. Tourists do not include migrants, border workers, diplomats, members of military force in the regular duty, regugees, etc.

Residence is the place where the person is settled intending to permanently live in it. Tourist is registered in a place or object wher it resides and due to it, in the case of change of place or object, the double reporting may

appear, which may lead to the double data. There the statistis records the arrivals of tourists, adn not the number of tourists.

TRANSPORT, STORAGE AND COMMUNICATIONS

Data on the transport of passengers and goods in the internal, marine, air and road transport refer to the transport performed by transport enterprises registered in transport activities, no matter whether the transport is done inside or outside the borders of our country on the account of domestic or foreign user.

Data are collected through regular monthly or annual statistical surveys from reports of transport enterprises.

Railway transport

Passengers transported in domestic transport include departed passengers, passengers departed abroad, passengers who arrived from abroad and passengers in transit. Transported cargo includes loaded goods in domestic and international transport:import, export and transit.

Traffic in airports

Data about traffic of passengers and goods in airports are received on the basis of regular monthly and annual reports of enteprises for airport services and they cover complete traffic, i.e., both domestic adn foreign airplanes.

Drumski saobraćaj

Podaci o prevozu odnose se na rad domaćih preduzeća drumskog saobraćaja u unutrašnjem i međunarodnom prevozu putnika i tereta.

Gradski saobraćaj

Obuhvaćen je prevoz putnika koji obavljaju saobraćajne organizacije u gradskom i prigradskom saobraćaju

Poštanski saobraćaj

Poštanski saobraćaj obuhvata: Poštanske usluge, telegrafске i telefonske usluge. Poštanske aktivnosti obuhvataju sljedeće usluge: prenos pismonosnih i paketnih pošiljki i usluge platnog prometa.

Pismonosne pošiljke odnose se na otpremljena pisma, dopisnice, novine i časopise, preporuke i vrijednosna pisma u unutrašnjem prometu, a u međunarodnom prometu i u prispjebu. Tranzit nije obuhvaćen.

Platni promet obuhvata uplate poštanskim uputnicama, po žiro i tekućim računima i računskim knjižicama, isplate međunarodnim poštanskim uputnicama i žiro i tekućim računima i računskim i invalidskim knjižicama.

Telegrafске usluge obuhvataju otpremu telegrama u unutrašnjem prometu i prometu sa inostranstvom, uključujući i tranzit.

Telefonske usluge obuhvataju fiksnu i mobilnu mrežu i prikazuju se u onim jedinicama koje se i koriste u tehničkom smislu-minutima.

MONETARNI AGREGATI**Izvori podataka**

Za izradu monetarne statistike su: bilansi Centralne banke Crne Gore i bilansi banaka. Banke dostavljaju podatke u skladu sa Odlukom o izvještajima koje banke dostavljaju Centralnoj banci Crne Gore.

Za prikupljanje i obradu podataka monetarne statistike nadležna je Centralna banka Crne Gore.

Definicije

Monetarnu bazu (M0) čine depoziti banaka kod CBCG (obračunski račun banaka i izdvojena obavezna rezerva - do januara 2008. bez dijela koji banke drže u državnim zapisima) i procijenjeni iznos gotovog novca u opticaju.

Monetarni agregat (M1) čine M0, depoziti po viđenju nebankarskog sektora kod banaka i CBCG, u eurima i drugim valutama, isključujući depozite centralne Vlade.

Road transport

Data about transport refer to the work of domestic enterprises of road transport in internal and international transport of passengers and cargo.

Local transport

It includes the transport of passengers performed by transport organizations in local and commuter services.

Postal communications

Postal communications include: Postal services, telegraphic and telephone services. Postal activities include the following services: transport of letter mail and services of balance of payments.

Letter mail refers only to mail sent, postal cards, newspaper and magazines, registered and value letters in domestic transport, as well as for the receiving in the international communications. The transit is not included.

Balance of payment includes payments made by postal money orders, by giro and current accounts and account booklets, payments by international postal money orders and giro and current accounts and account and disability booklets.

Telegraph services refer to sending of telegrams in the country as well as to foreign countries, including the transit.

Telephone services include fixed and mobile networks and are presented in the units used in the technical sense -minutes.

MONETARY AGGREGATES**The sources of data**

For preparation of monetary statistics are: the balance sheets of the Central Bank of Montenegro and of banks. Banks submit their data according to the Decision on reports that banks submit to the Central Bank of Montenegro.

The Central Bank of Montenegro is responsible for the collection and processing of the data of monetary statistics.

Definitions

Monetary base (M0) comprises banks' deposits in the CBM -Payment Operations (banks' giro accounts and allocated reserve requirement until January 2008, excluding the part which banks keep as treasury bills) and the estimated amount of cash in circulation.

Monetary aggregate (M1) comprises M0, demand deposits by the non-banking sector with banks and the CBM, in EUR and other currencies, excluding deposits of the central Government.

Monetary aggregate (M11) comprises M1 plus the central Government's demand deposits in EUR and other currencies.

Monetarni agregat (M11) čini M11 uvećan za depozite centralne Vlade po viđenju, u eurima i drugim valutama.

Monetarni agregat (M2) čine M1 i oročeni depoziti nebankarskog sektora kod banaka i CBCG, u eurima i drugim valutama, isključujući depozite centralne Vlade.

Monetarni agregat (M21) čini M11 uvećan za oročene depozite (uključujući depozite centralne Vlade), u eurima i drugim valutama.

Depoziti stanovništva – u tabeli je prikazano stanje ukupnih depozita fizičkih lica kod banaka na kraju perioda i njihova struktura po ročnosti.

PLATNI BILANS CRNE GORE

Bilans plaćanja sastavlja se u skladu sa metodologijom koju je preporučio Međunarodni monetarni fond (Balance of payments Manual, fifth edition, 1993). Izvori podataka su: Republička uprava carina Crne Gore, MONSTAT, Elektroprivreda Crne Gore, Ministarstvo finansija, poslovne banke i CBCG. Bilans plaćanja se iskazuje u eurima. Preračunavanje vrijednosti transakcija iz originalnih valuta u izvještajnu valutu obavlja se: primjenom srednjih kurseva CBCG na dan transakcije, primjenom mjesečnih i godišnjih srednjih prosječnih kurseva CBCG, primjenom srednjeg dnevnog kursa na kraju perioda kod procjene transakcija čija se razlika stanja prati.

Početkom 2005. godine izvršena je revizija podataka koji se odnose na 2004. godinu. Naime, tokom 2004. godine postalo je tehnički moguće pratiti robne transakcije između Crne Gore i Srbije na osnovu podataka Republičke uprave carina Crne Gore, odnosno carinskih deklaracija. Do 2004. godine izvor za praćenje ovih tokova su bili jedino podaci poslovnih banaka o ostvarenom platnom prometu sa inostranstvom, odnosno ITRS.

Izvor podataka o spoljnoj trgovini od 2005. godine je MONSTAT. U 2008. godini izvršena je revizija podataka o spoljnoj trgovini za 2007. godinu u skladu sa promjenom metodologije koju koristi MONSTAT. Podaci o spoljnoj trgovini u platnom bilansu Crne Gore za 2007. i 2008. godinu prikazani su po opštem sistemu trgovine. CBCG vrši prilagođavanje podataka dobijenih od MONSTAT-a za potrebe platnog bilansa u skladu sa metodologijom MMF-a (Balance of Payments Manual, Fifth edition, IMF, 1993).

Kod evidencije transportnih usluga koriste se podaci banaka o ostvarenom platnom prometu sa inostranstvom. Prihodi od **putovanja** obuhvataju procijenjene prihode od turizma, koji se dopunjavaju sa podacima o pruženim zdravstveno-rekreativnim uslugama i potrošnjom u cilju školovanja. Do prihoda od turizma se dolazi na osnovu broja noćenja (podatak MONSTAT-a) i procijenjene prosječne dnevne potrošnje.

Monetary aggregate (M2) includes M1 and non-banking sector's time deposits with banks and CBM, in EUR and other currencies, excluding deposits of the central Government.

Monetary aggregate (M12) comprises M11 plus the central Government's time deposits in EUR and other currencies.

Deposits by households – the table present the balance of total deposits of individuals by households at the end of period and their structure by time.

THE BALANCE OF PAYMENT OF MONTENEGRO

The balance of payments is prepared according to the methodology prescribed by the International Monetary Fund (Balance of Payment, 1993). The sources of data are: Custom Administration of Montenegro, MONSTAT, Montenegrin Electric Enterprise, the Ministry of Finance, commercial banks, and the Central Bank of Montenegro. The balance of payments is presented in EUR. Recalculation of the transaction values from the original currency to the reporting currency is performed by: using the mean exchange rate from the Central Bank of Montenegro and at the end of the period with evaluation transactions whose change is monitored using daily mean exchange rate.

The revision of data referring to 2004 was done in the beginning of 2005. Namely, it was technically possible in 2004 to follow transaction of goods between Montenegro and Serbia on the basis of data from Customs Administration of Montenegro i.e., the customs declarations. Until 2004 the source for viewing these currents was only data of banks about the achieved balance of payments with foreign countries, i.e., ITRS.

Since 2005, the source of data about external trade is MONSTAT. In 2008. accomplished revision data from external trade for 2007 with methodology which use MONSTAT. CBM makes adjustments of data received from MONSTAT in order to harmonize them with the IMF methodology (Balance of Payments Manual, Fifth edition, IMF, 1993).

The registering of transportation services uses banks' data on performed international payment operations.

Incomes from **travelling** include estimated incomes from tourism, which are supplemented by data on provided health- recreation services and expenditures for education. Data on expenditures in tourism are obtained on the basis of the number of tourist overnight stays (data from MONSTAT) and estimated average daily consumption.

Početkom 2006. godine korigovan je model za procjenu prihoda od turizma, korekcija se odnosi na 2003. i 2004. godinu. Podaci o rashodima za turizam dobijaju se na osnovu ostvarenog platnog prometa sa inostranstvom.

Finansijske usluge (usluge osiguranje i reosiguranja, zastupnička i posrednička provizija i provizija i troškovi u bankarskom poslovanju) se prate na osnovu statistike platnog prometa sa inostranstvom. Ostale usluge obuhvataju građevinske usluge, ptt i komunikacijske usluge, usluge osiguranja, kompjuterske i informacione usluge, autorska prava i honorare od izdavanja dozvola i ostale poslovne usluge. Podaci o njima se dobijaju iz statistike platnog prometa sa inostranstvom, a na osnovu izvještaja banaka.

Račun dohotka uključuje podatke iz statistike platnog prometa sa inostranstvom o kompenzacijama, zaposlenima, plaćanjima i naplatama po osnovu kamata, plaćenim i naplaćenim dividendama. Izvor podataka su izvještaji banaka i CBCG.

Tekući transferi obuhvataju podatke o transferima sektora vlade i ostalih sektora koji se dobijaju iz statistike platnog prometa sa inostranstvom.

Direktne i portfolio investicije prate se na osnovu podataka statistike platnog prometa sa inostranstvom i sprovedenih anketa. Ostale investicije koje obuhvataju podatke o kreditima, trgovinskim kreditima, gotovini i depozitima se dobijaju iz statistike platnog prometa sa inostranstvom.

Rezerve Centralne banke Crne Gore obuhvataju sredstva komercijalnih banaka deponovana kod ino banaka, sredstva Centralne banke deponovana kod ino banaka, sredstva u trezoru CBCG i rezervne pozicije kod MMF-a. Izvor podataka je CBCG (monetarna statistika).

The model for estimation of incomes from tourism was modified in the beginning of 2006, and the correction refers to 2003 and 2004. Data on expenditures in tourism are obtained on the basis of international payment operations.

Financial services (insurance and reinsurance, representative and mediation commission fees, and commission fees and expenses for banking operations) are covered on the basis of foreign payment operations statistics. Other services include investment work in foreign countries, PTT and communication services, forwarding services, expenses for the maintenance of representative offices, computer and information technology services, author's fee, and fee for license issuance, as well as other business services. The data is obtained from foreign payment operations statistics and banks' reports.

Income statement comprises data from foreign payment operations statistics on compensations to employees, payments, and charged dividends. The source of data is banks' reports.

Current transfers include data about transfers of Government sector and other sectors received from balance of payment with foreign countries.

Direct and portfolio investments are followed on the basis of data of international payment operations statistics and conducted surveys. Other investments include data about loans, trade loans, cash and deposits and are obtained from the balance of payment statistics with foreign countries.

The Central Bank of Montenegro's reserves comprise commercial banks' fund deposited in international bank and the CBM funds deposited in foreign banks, funds in the CBM treasury and reserve positions in IMF. The source of data is CBM (monetary statistics).

REDAKCIJA / EDITORIAL BOARD :

RAJKO LAKOVIĆ, rukovodilac / coordinator
Mr. Gordana Radojević, Gojko Dragaš,
Branka Šušić – Radovanović,
Snežana Remiković, Bojana Radević-Radojević

Tehnički urednik / *Editor* : Radmila Šišević
Grafički prikazi / *Graphs* : Radmila Šišević
Prevod / *Translated by*: Irena Mihailović

IZDAJE I ŠTAMPA: Zavod za statistiku Crne Gore – MONSTAT, Podgorica, IV Proleterske br. 2
Prilikom korišćenja navesti izvor – preporučuje se skraćenica – MSP, br.- /2008

ODGOVARA: Radomir Đurović, direktor.

Izlazi 25-og u mjesecu. Tiraž 150 primjeraka. Prodajno odjeljenje: Tel: +382 20 230-773

PUBLISHED AND PRINTED BY: Statistical Office of Montenegro – MONSTAT, Podgorica, IV Proleterske no. 2
Data using is subject to quoting source – abbreviation recommended: MSR, no. -/2008

RESPONSIBLE: Radomir Đurović, Director.

Issued on 25th in a month. Circulation 150 copies. Department of sales: +382 20 230-773

E-mail: contact@monstat.org Web Site: www.monstat.org