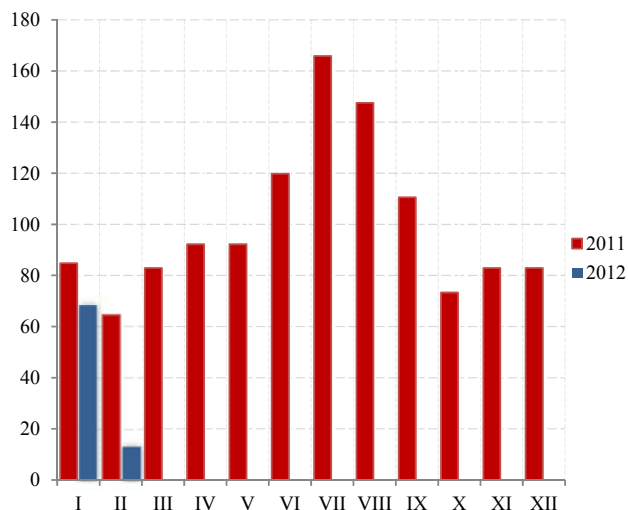


SAOBRAĆAJ, SKLADIŠTENJE I VEZE
TRANSPORT, STORAGE AND COMMUNICATIONS

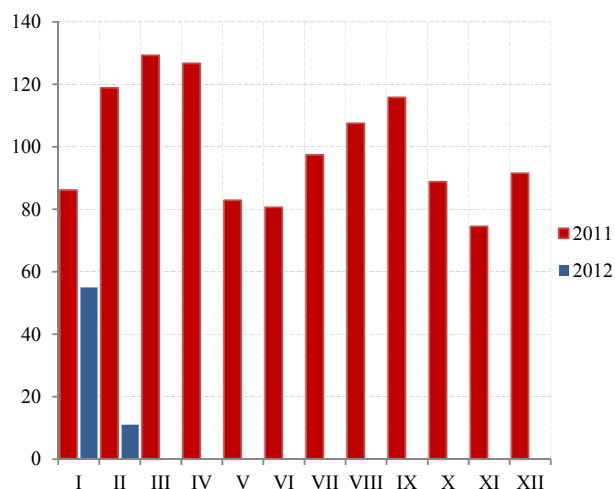
Željeznički saobraćaj / Railway transport

Ø 2011 = 100

Putnički / Passengers



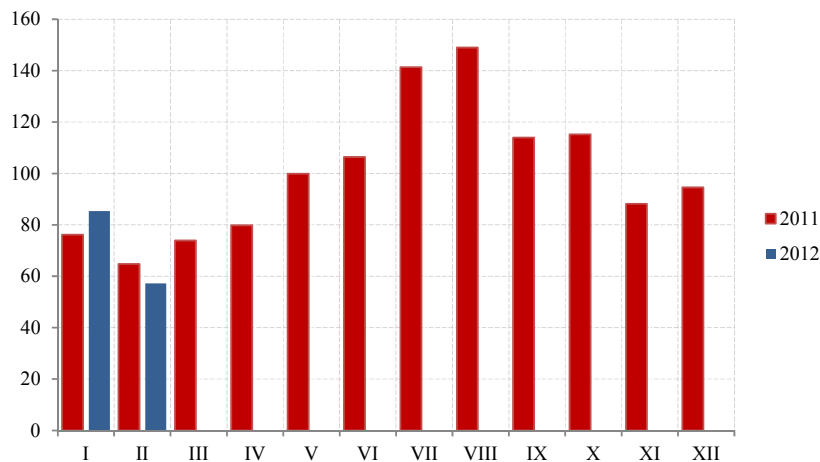
Robni / Goods



	ŽELJEZNIČKI SAOBRAĆAJ / RAILWAY TRANSPORT					
	Putnički / Passenger			Robni / Goods		
	indeks Index	putnici u 000 Passengers, thousands	putnički km u 000 Passenger kilometres in thousands	Indeks Index	prevoz robe u 000 t Goods in thousands tonnes	tonski km u 000 Tonne- kilometres in thousands
2007	169,0	999	110000	136,5	1761	184957
2008	192,0	1031	125000	135,7	1740	183854
2009	152,4	852	99200	74,2	854	100546
2010	139,3	755	90660	111,2	1213	150699
2011	100,0	692	65100	100,0	1050	135522
2011						
II	64,5	38	3500	118,9	100	13430
III	82,9	45	4500	129,3	106	14606
IV	92,2	45	5000	126,7	101	14306
V	92,2	58	5000	82,9	81	9360
VI	119,8	70	6500	80,6	76	9103
VII	165,9	95	9000	97,4	81	11003
VIII	147,5	85	8000	107,5	91	12142
IX	110,6	67	6000	115,8	99	13080
X	73,7	49	4000	88,8	77	10033
XI	82,9	50	4500	74,5	69	8409
XII	82,9	50	4500	91,5	81	10330
2012						
I	68,2	53	3 700	55,0	55	6 212
II	13,4	34	729	11,0	35	1 242
I - II 2012/I - II 2011	54,7	111,5	54,7	32,2	47,9	32,2

SAOBRAĆAJ, SKLADIŠTENJE I VEZE
TRANSPORT, STORAGE AND COMMUNICATIONS

Drumski saobraćaj - Putnički / Road transport - passengers



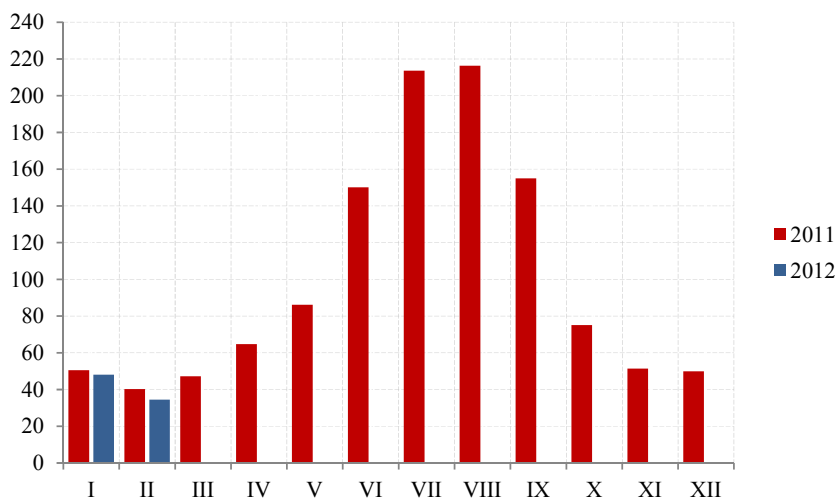
Ø 2011 = 100

	DRUMSKI SAOBRAĆAJ / ROAD TRANSPORT							
	PUTNIČKI / PASSENGERS				ROBNI / GOODS			
	indeks <i>Index</i>	putnici u 000 <i>Passengers, thous.</i>	putnički km u 000 <i>Passenger kilometres in thous.</i>	autobuski km u 000 <i>Buskilometres in thous</i>	indeks <i>Index</i>	roba u 000 tona <i>Goods in thousands tonnes</i>	tonski km u 000 <i>Tonne- kilometres in thous.</i>	kamionski km u 000 <i>Truck kilometres in thous.</i>
2007	176,2	5738	141247	17630	89,6	2131	91786	16269
2008	154,0	5503	123421	18068	133,8	2468	137058	14857
2009	127,1	5536	101928	16272	175,0	1724	179288	11667
2010	100,8	6209	80833	20517	162,6	1839	166564	12411
2011	100,0	6240	80166	18700	100,0	1247	102465	12108
2011								
II	64,8	410	4329	1364	94,1	126	8038	732
III	73,9	423	4940	1400	85,8	78	7327	677
IV	79,8	471	5331	1421	80,6	96	6879	488
V	99,9	544	6673	1594	95,2	101	8129	1812
VI	106,4	547	7107	1568	107,9	133	9212	820
VII	141,4	634	9444	1663	118,3	110	10100	1253
VIII	149,0	701	9953	1813	115,9	75	9900	1269
IX	114,0	622	7617	1718	105,1	109	8973	1161
X	115,2	543	7694	1703	102,8	96	8781	1252
XI	88,2	497	5891	1558	123,3	121	10532	1025
XII	94,6	496	6323	1500	100,9	81	8614	999
2012								
I	85,4	326	5707	1302	54,5	40	4658	675
II	57,2	329	3 819	913	55,5	22	4 743	830
I - II 2012 / I - II 2011	103,6	86,0	103,6	80,2	67,1	25,1	67,1	111,3

SAOBRAĆAJ, SKLADIŠTENJE I VEZE
TRANSPORT, STORAGE AND COMMUNICATIONS

Ø 2011 = 100

Vazdušni saobraćaj - putnički / Air transport - passengers



	GRADSKI SAOBRAĆAJ LOCAL TRANSPORT		VAZDUŠNI SAOBRAĆAJ, PROMET NA AERODROMIMA AIR TRANSPORT, TRAFFIC AT AIRPORTS		
	indeks Index	prevezeno putnika u 000 Passengers in thousands	PUTNIČKI / PASSENGERS		ROBNI / GOODS
			indeks Index	prevoz putnika Transport of passengers	prevoz robe u tonama Transport of goods in tonnes
2007	204,8	1491	81,4	1024491	1320
2008	212,5	1547	88,1	1109095	1490
2009	74,7	544	76,0	956405	1478
2010	81,0	590	95,8	1205536	2159
2011	100,0	728	100,0	1258835	1074
2011					
II	108,8	66	40,2	42174	324
III	113,7	69	47,2	49514	68
IV	113,7	69	64,7	67842	64
V	113,7	69	86,1	90308	76
VI	67,6	41	150,1	157444	84
VII	65,9	40	213,6	224056	72
VIII	70,9	43	216,3	226862	66
IX	115,4	70	155,0	162577	75
X	118,7	72	75,1	78808	64
XI	125,3	76	51,4	53912	61
XII	123,6	75	49,9	52337	76
2012					
I	61,0*	37	48,1	50 503	50
II	83,6	51	34,5	36 163	57
I - II 2012 / I - II 2011	84,6	84,6	91,1	91,1	29,1

SAOBRAĆAJ, SKLADIŠTENJE I VEZE / TRANSPORT, STORAGE AND COMMUNICATIONS
POMORSKI SAOBRAĆAJ / MARINE TRANSPORT

	Prevoz robe / Transport of goods			Promet u lukama (u tonama) / Turnover in harbours (tonnes)				
	Indeks Index	u 000 t In thous, tonnes	tonske milje u hilj. Tonne milles in thousands	Indeks Index	ukupno Total	unutrašnji romet Internal turnover	izvoz ¹⁾ Export	uvoz ²⁾ Import
2007	280,4	785	408	118,4	2071310	1825	791509	1280327
2008	212,5	595	352	111,4	1949409	8350	683990	1219948
2009	193,2	541	273	84,6	1481069	-	613696	829491
2010	157,5	441	239	100,5	1758692	-	835499	798668
2011	100,0	280	197	100,0	1749982	-	758193	960360
2011								
II	36,5	36	6	67,5	98453	-	43911	54532
III	73,1	30	12	80,0	116690	-	64758	51932
IV	48,7	30	7	122,6	178728	-	97665	77427
V	67,0	25	10	137,8	200920	-	137879	59784
VI	164,5	23	27	134,9	196703	-	116818	64069
VII	274,1	20	45	116,2	169476	-	94100	72851
VIII	188,8	15	32	110,1	160595	-	21238	139357
IX	103,6	22	17	77,6	113145	-	41169	71934
X	85,3	16	14	87,4	127403	-	39068	85810
XI	48,7	21	8	107,9	157381	-	32921	121149
XII	60,9	16	10	102,6	149636	-	25931	123398
2012								
I	31,2	14	5	148,7	216883	-	36532	180351
II	25,0	12	4	52,7	76 823	-	25 274	51 542
I - II 2012 / I - II 2011	64,3	44,1	64,3	163,8	163,8	-	71,3	250,3

¹⁾Tranzit utovar prikazan kod izvoza ²⁾Tranzit istovar prikazan kod uvoza / ¹⁾Transit loading presented in export, ²⁾Transit loading presented in import

P T T SAOBRAĆAJ / POSTAL, TELEGRAPH AND TELEPHONE (PTT) COMMUNICATIONS

	Poštanske usluge / Postal services				Telefonske usluge / Telephone services	
	pisma u 000 komada Letters in thousands pcs,	paketi u 000 komada Packages in thousands pcs,	Preporučene pošiljke u 000 komada Registered mail in thousands pcs,	Tiskovine i ostalo, u 000 komada Other printed papers in thousands pcs,	fiksna telefonija	mobilna telefonija
					Fixed telephony	Mobile telephony
	minuti u 000 Minutes in thous,	minuti u 000 Minutes in thous,				
2007	18291	23	3667	642	864471	660168
2008	20521	25	4227	930	650567	1027704
2009	21564	25	4106	681	513213	1166274
2010	20763	25	4171	642	380585	1262626
2011	20488	29	4273	594	423869	1803764
2011						
II	1789	2	336	44	28557	111120
III	1810	3	391	53	31333	119423
IV	1790	2	353	49	36345	151318
V	1720	2	340	50	37259	143581
VI	1641	2	365	53	38023	166319
VII	1698	3	342	54	39901	185191
VIII	1649	2	325	52	39367	187402
IX	1718	2	368	51	36121	163111
X	1676	3	379	43	36038	158061
XI	1637	3	408	50	34860	148112
XII	1622	3	391	45	36938	156493
2012						
I	1509	1	299	47	32962	147117
II	1 548	2	358	39	36 455	152 250
I - II 2012 / I - II 2011	86,7	75,0	107,5	91,5	120,3	133,2