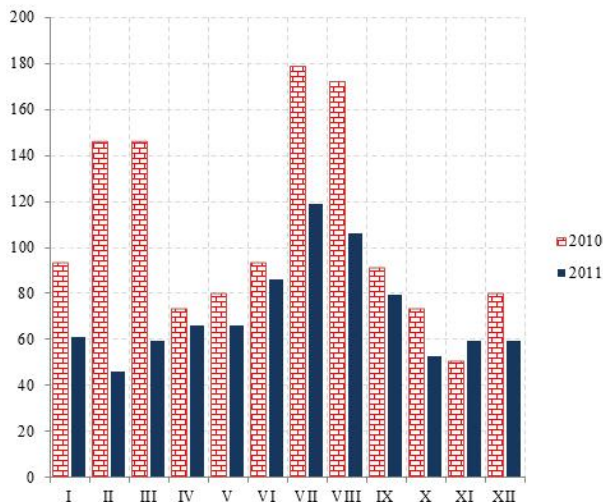


**SAOBRAĆAJ, SKLADIŠTENJE I VEZE**  
**TRANSPORT, STORAGE AND COMMUNICATIONS**

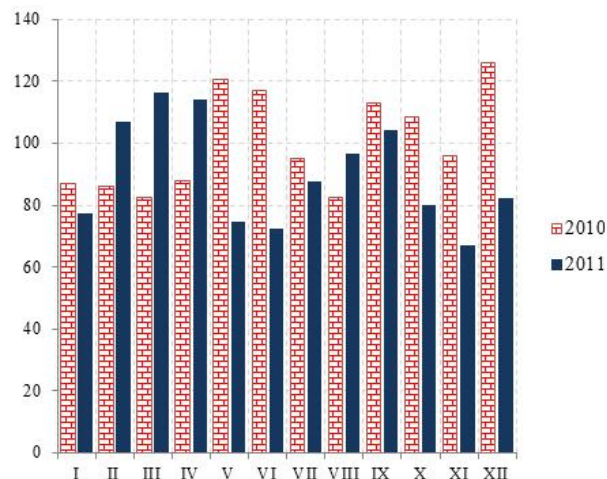
**Željeznički saobraćaj / Railway transport**

Ø 2010 = 100

**Putnički / Passengers**



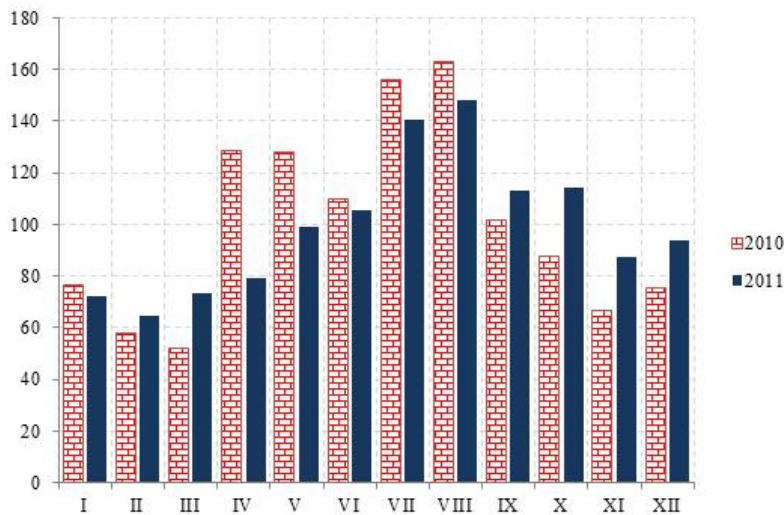
**Robni / Goods**



	ŽELJEZNIČKI SAOBRAĆAJ / RAILWAY TRANSPORT					
	Putnički / Passenger			Robni / Goods		
	indeks <i>Index</i>	putnici u 000 <i>Passengers, thousands</i>	putnički km u 000 <i>Passenger kilometres in thousands</i>	Indeks <i>Index</i>	prevoz robe u 000 t <i>Goods in thousands tonnes</i>	tonski km u 000 <i>Tonne- kilometres in thousands</i>
2006	145,0	1067	131500	120,9	2494	182163
2007	121,3	999	110000	122,7	1761	184957
2008	137,9	1031	125000	122,0	1740	183854
2009	109,4	852	99200	66,7	854	100546
2010	100,0	755	90660	100,0	1213	150699
Ø 1 - XII 2010	100,0	63	7555	100,0	101	12558
Ø 1 - XII 2011	71,8	58	5425	89,9	88	11294
2010						
XII	79,4	50	6000	125,7	119	15789
2011						
I	60,8	40	4600	77,4	88	9720
II	46,3	38	3500	106,9	100	13430
III	59,6	45	4500	116,3	106	14606
IV	66,2	45	5000	113,9	101	14306
V	66,2	58	5000	74,5	81	9360
VI	86,0	70	6500	72,5	76	9103
VII	119,1	95	9000	87,6	81	11003
VIII	105,9	85	8000	96,7	91	12142
IX	79,4	67	6000	104,2	99	13080
X	52,9	49	4000	79,9	77	10033
XI	59,6	50	4500	67,0	69	8409
XII	59,6	50	4500	82,3	81	10330
<b>I - XII 2011 / I - XII 2010</b>	<b>71,8</b>	<b>91,7</b>	<b>71,8</b>	<b>89,9</b>	<b>86,6</b>	<b>89,9</b>

**SAOBRAĆAJ, SKLADIŠTENJE I VEZE**  
**TRANSPORT, STORAGE AND COMMUNICATIONS**

**Drumski saobraćaj - Putnički / Road transport - passengers**



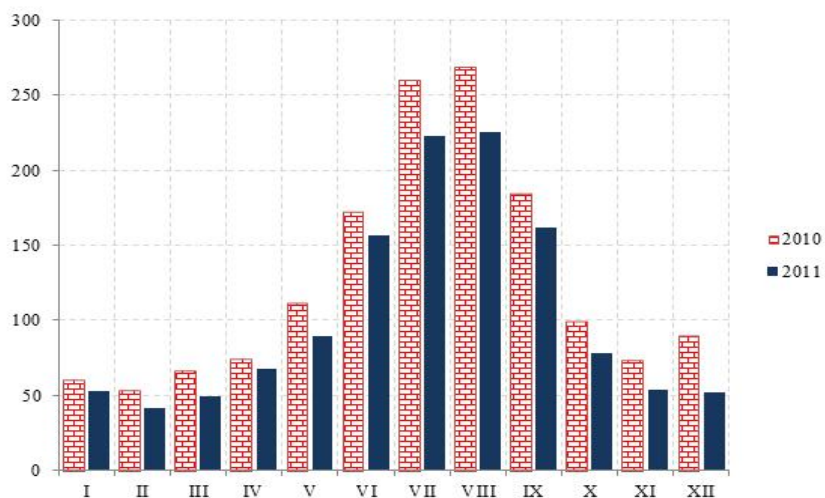
Ø 2010 = 100

	DRUMSKI SAOBRAĆAJ / ROAD TRANSPORT							
	PUTNIČKI / PASSENGERS				ROBNI / GOODS			
	indeks <i>Index</i>	putnici u 000 <i>Passengers, thous.</i>	putnički km u 000 <i>Passenger kilometres in thous.</i>	autobuski km u 000 <i>Buskilometres in thous</i>	indeks <i>Index</i>	roba u 000 tona <i>Goods in thousands tonnes</i>	tonski km u 000 <i>Tonne- kilometres in thous.</i>	kamionski km u 000 <i>Truck kilometres in thous.</i>
2006	141,9	4825	114695	16809	43,7	1961	72724	15167
2007	174,7	5738	141247	17630	55,1	2131	91786	16269
2008	152,7	5503	123421	18068	82,3	2468	137058	14857
2009	126,1	5536	101928	16272	107,6	1724	179288	11667
2010	100,0	6209	80833	20517	100,0	1839	166564	12411
Ø I - XII 2010	100,0	517	6736	1710	100,0	153	13880	1034
Ø I - XII 2011	99,2	520	6681	1558	61,6	104	8539	1009
2010								
XII	74,9	493	5044	1502	57,0	119	7951	684
2011								
I	72,2	352	4864	1398	43,1	121	5980	620
II	64,3	410	4329	1364	57,9	126	8038	732
III	73,3	423	4940	1400	52,8	78	7327	677
IV	79,1	471	5331	1421	49,6	96	6879	488
V	99,1	544	6673	1594	58,6	101	8129	1812
VI	105,5	547	7107	1568	66,3	133	9212	820
VII	140,2	634	9444	1663	72,8	110	10100	1253*
VIII	147,8	701	9953	1813	71,3	75	9900	1269
IX	113,1	622	7617	1718	64,6	109	8973	1161
X	114,2	543	7694	1703	63,3	96	8781	1252
XI	87,5	497	5891	1558	75,9	121	10532	1025
XII	93,9	496	6323	1500	62,1	81	8614	999
<b>I - XII 2011 / I - XII 2010</b>	<b>99,2</b>	<b>100,5</b>	<b>99,2</b>	<b>91,1</b>	<b>61,5</b>	<b>67,8</b>	<b>61,5</b>	<b>97,6</b>

**SAOBRAĆAJ, SKLADIŠTENJE I VEZE**  
**TRANSPORT, STORAGE AND COMMUNICATIONS**

Ø 2010 = 100

**Vazdušni saobraćaj - putnički / Air transport - passengers**



	GRADSKI SAOBRAĆAJ LOCAL TRANSPORT		VAZDUŠNI SAOBRAĆAJ, PROMET NA AERODROMIMA AIR TRANSPORT, TRAFFIC AT AIRPORTS		
	indeks Index	prevezeno putnika u 000 Passengers in thousands	PUTNIČKI / PASSENGERS		ROBNI / GOODS
			indeks Index	prevoz putnika Transport of passengers	prevoz robe u tonama Transport of goods in tonnes
2006	269,7	1591	69,2	833715	1067
2007	252,7	1491	85,0	1024491	1320
2008	262,2	1547	92,0	1109095	1490
2009	92,2	544	79,3	956405	1478
2010	100,0	590	100,0	1205536	2159
Ø I - XII 2010	100,0	49	100,0	100461	180
Ø I - XII 2011	124,5	61	104,4	104903	90
2010					
XII	146,9	72	71,4	71755	397
2011					
I	77,5	38	52,8	53001	44
II	134,7	66	42,0	42174	324
III	140,8	69	49,3	49514	68
IV	140,8	69	67,5	67842	64
V	140,8	69	89,9	90308	76
VI	83,7	41	156,7	157444	84
VII	81,6	40	223,0	224056	72
VIII	87,7	43	225,8	226862	66
IX	142,9	70	161,8	162577	75
X	146,9	72	78,4	78808	64
XI	155,1	76	53,7	53912	61
XII	153,1	75	52,1	52337	76
<b>I - XII 2011/ I - XII 2010</b>	<b>123,4</b>	<b>123,4</b>	<b>104,4</b>	<b>104,4</b>	<b>49,7</b>

**SAOBRAĆAJ, SKLADIŠTENJE I VEZE / TRANSPORT, STORAGE AND COMMUNICATIONS**  
**POMORSKI SAOBRAĆAJ / MARINE TRANSPORT**

	Prevoz robe / Transport of goods			Promet u lukama ( u tonama) / Turnover in harbours (tonnes)				
	Indeks Index	u 000 t In thous, tonnes	tonske milje u hilj.,, Tonne milles in thousands	Indeks Index	ukupno Total	unutrašnji romet Internal turnover	izvoz <sup>1)</sup> Export	uvoz <sup>2)</sup> Import
2006	159,0	818	380	113,1	1988204	116	1027208	941905
2007	170,7	785	408	117,8	2071310	1825	791509	1280327
2008	147,3	595	352	110,8	1949409	8350	683990	1219948
2009	114,2	541	273	84,2	1481069	-	613696	829491
2010	100,0	441	239	100,0	1758692	-	835499	798668
Ø I - XII 2010	100,0	37	20	100,0	146558	-	69625	66556
Ø I - XII 2011	80,4	23	16	99,5	145832	-	63183	80030
2010								
XII	60,0	30	12	99,4	145626	-	58442	87184
2011								
I	40,2	23	8	55,2	80852	-	42735	38117
II	29,2	36	6	67,2	98453	-	43911	54532
III	60,0	30	12	79,6	116690	-	64758	51932
IV	81,5	30	7	122,0	178728	-	97665	77427
V	50,3	25	10	137,1	200920	-	137879	59784
VI	135,7	23	27	116,4	196703	-	116818	64069
VII	226,1	20	45	115,6	169476	-	94100	72851
VIII	160,8	15	32	109,6	160595	-	21238	139357
IX	85,4	22	17	77,2	113145	-	41169	71934
X	70,3	16	14	86,9	127403	-	39068	85810
XI	40,2	21	8	107,4	157381	-	32921	121149
XII	50,3	16	10	102,1	149636	-	25931	123398
<b>I - XII 2011/ I - XII 2010</b>	<b>82,5</b>	<b>63,5</b>	<b>82,5</b>	<b>99,5</b>	<b>99,5</b>	<b>-</b>	<b>90,7</b>	<b>120,2</b>

<sup>1)</sup>Tranzit utovar prikazan kod izvoza <sup>2)</sup>Tranzit istovar prikazan kod uvoza / <sup>1)</sup>Transit loading presented in export, <sup>2)</sup>Transit loading presented in import,

**P T T SAOBRAĆAJ / POSTAL, TELEGRAPH AND TELEPHONE (PTT) COMMUNICATIONS**

	Poštanske usluge / Postal services		Telegrafske usluge / Telegraph services		Telefonske usluge / Telephone services	
	pisma u 000 komada Letters in thousands pcs,	paketi u 000 komada Packages in thousands pcs,	uputnice u 000 komada Postal orders in thousands pcs,	telegr. u 000 komada Telegraphs in thousands pcs,	fiksna telefonija	mobilna telefonija
					Fixed telephony	Mobile telephony
					minuti u 000	minuti u 000
					Minutes in thous,	Minutes in thous,
2006	17396	30	45	581	862596	488802
2007	18291	23	44	589	864471	660168
2008	20521	25	37	507	650567	1027704
2009	21564	25	34	476	513213	1166274
2010	20763	25	36	419	380585	1262626
Ø I - XII 2010	1730	2	3	35	31715	105219
Ø I - XII 2011	1707	2	4	30	35322	150314
2010						
XII	1910	3	4	33	32485	112414
2011						
I	1738	2	3	33	29127	113633
II	1789	2	3	36	28557	111120
III	1810	3	4	29	31333	119423
IV	1790	2	4	26	36345	151318
V	1720	2	4	33	37259	143581
VI	1641	2	4	37	38023	166319
VII	1698	3	5	28	39901	185191
VIII	1649	2	4	26	39367	187402
IX	1718	2	4	32	36121	163111
X	1676	3	5	30	36038	158061
XI	1637	3	5	29	34860	148112
XII	1622	3	7	26	36938	156493
<b>I - XII 2011/ I - XII 2010</b>	<b>98,7</b>	<b>116,0</b>	<b>144,4</b>	<b>87,1</b>	<b>111,4</b>	<b>142,9</b>