

SAOBRAĆAJ, SKLADIŠTENJE I VEZE / TRANSPORT, STORAGE AND COMMUNICATIONS

Metodološka objašnjenja / *Methodological notes*

Željeznički saobraćaj / *Railway transport*

Drumski saobraćaj - putnički / *Road transport – passengers*

Promet na aerodromima / *Traffic at airports*

Gradski saobraćaj / *Local transport*

Pomorski saobraćaj / *Marine transport*

PTT saobraćaj / *Postal, telegraph and telephone (ptt) communications*

SAOBRAĆAJ, SKLADIŠTENJE I VEZE**Izvori podataka i obuhvatnost**

Sva istraživanja saobraćaja osim istraživanja o teretnom drumskom saobraćaju obuhvataju preduzeća sa 5 i više zaposlenih koja su u statističkom biznis registru razvrstana u sektor H Klasifikacije djelatnosti (KD 2010), oblasti 49, 50, 51, 52, 53 i sektor J - oblast 61.

Istraživanje o teretnom drumskom saobraćaju se sprovodi na uzorku. Okvir za izbor uzorka je evidencija registrovanih vozila koja se dobija od Ministarstva unutrašnjih poslova Crne Gore.

Izvor podataka za:

- (i) željeznički saobraćaj su izvještajne jedinice kojima je prevoz putnika i robe u željezničkom saobraćaju pretežna djelatnost (sektor H, oblast 49);
- (ii) drumski putnički saobraćaj su izvještajne jedinice kojima je prevoz putnika u drumskom saobraćaju pretežna djelatnost (sektor H, oblast 49);
- (iii) istraživanje teretnog drumskog saobraćaja teretna vozila za prevoz robe korisne nosivosti 3500 kg i veće, kao i tegljači. Izvor podataka su pravna i fizička lica koja su vlasnici ili korisnici vozila. Izvor podataka za teretna drumska vozila je Ministarstvo unutrašnjih poslova Crne Gore.
- (iv) lokalni drumski saobraćaj su izvještajne jedinice kojima je prevoz putnika u lokalnom drumskom (gradskom) saobraćaju pretežna djelatnost (sektor H, oblast 49);
- (v) prometa na aerodromima su izvještajne jedinice koje obavljaju uslužne djelatnosti u vazdušnom saobraćaju (sektor H, oblast 52);
- (vi) izvještaj o dolasku i odlasku brodova, izvještajne jedinice su Lučke kapetanije i Uprava pomorske sigurnosti;
- (vii) poštanski i telekomunikacioni saobraćaj je Agencija za elektronske komunikacije i poštansku djelatnost

Definicije

Putnik je svako lice koje je nabavilo kartu ili odgovarajuću ispravu i ušlo u prevozno sredstvo s ciljem da se preveze do mjesta opredjeljenja.

Putnički kilometar označava prevoz jednog putnika na rastojanju od 1 km.

Pod prevezenom **robom** podrazumijevaju se sve pošiljke tereta (robe) koji je prevezen na osnovu ugovora o prevozu. Količina prevezene robe izražava se u bruto težini, što znači da težina robe obuhvata i težinu ambalaže ili opreme (kontejneri).

Tonski kilometar označava prevoz jedne tone robe na rastojanju od 1 km.

Poslednji objavljeni podatak se smatra preliminarnim i postaje konačan, u definisanom roku, predviđenim Kalendarom objavljivanja statističkih podataka.

TRANSPORT, STORAGE AND COMMUNICATIONS**Sources of data and coverage**

Units for all surveys of transport except survey of freight road transport are enterprises with 5 or more employees who are in the Statistical Business Register according to the activity classification in Section H (KD 2010), divisions 49, 50, 51, 52, 53 and Section J divisions 61.

Survey transport of goods by road conducted on a sample, frame for sample selection is a database of registered vehicles that are obtained from Ministry Interior of Montenegro.

Data source:

- (i) for rail transport are reporting units with the carriage of passengers and goods by rail prevailing activity (Section H, field 49);*
- (ii) road passenger traffic reporting units with the carriage of passengers in road traffic prevailing activity (Section H, field 49);*
- (iii) road freight transport vehicles for transportation of goods payload of 3500 kg and higher, as well as tractors. Sources of data are legal and natural persons who are owners or users of vehicles. Data source for road vehicles is the Ministry of Interior of Montenegro;*
- (iv) local road traffic reporting units with the carriage of passengers in local road (urban) traffic prevailing activity (Section H, field 49);*
- (v) traffic at airports reporting units that perform service activities in air traffic (Section H, field 52);*
- (vi) report on the arrival and departure of ships reporting units are the Port Authority and Maritime safety department of Montenegro;*
- (vii) postal and telecommunications traffic reporting unit is Agency for electronic communications and postal service*

Definitions

Passenger is every person with ticket or appropriate document with the aim to travel to desired place.

Passenger kilometer presents the transport of one person over the distance of 1 km.

Goods transported are goods transferred based on the contract on transport. The quantity of goods transported is expressed in gross weight, meaning that the quantity of goods covers also the quantity of packaging or packing material (containers).

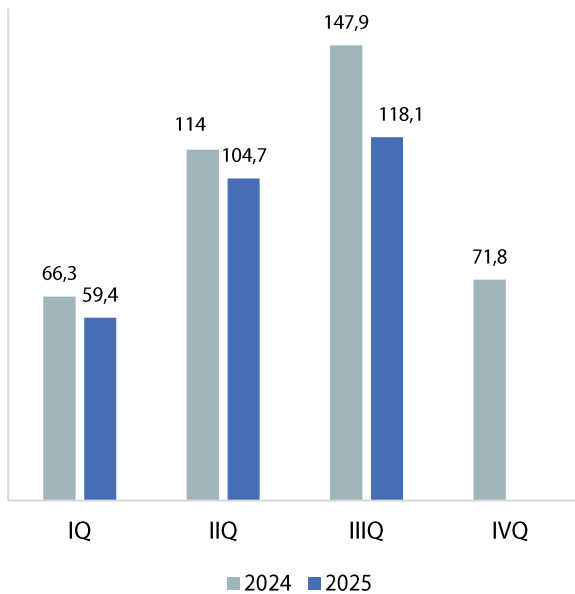
Tonne-kilometre indicate transport of one-tone goods over the distance of 1 km.

The last published data are considered preliminary, and becomes final within the defined deadline, as foreseen by the Statistical Release Calendar.

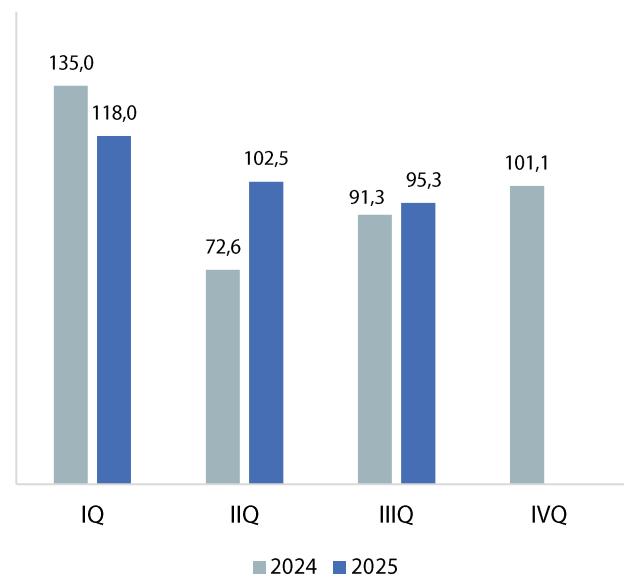
ŽELJEZNIČKI SAOBRAČAJ / RAILWAY TRANSPORT

Ø 2024 = 100

Putnički / Passengers



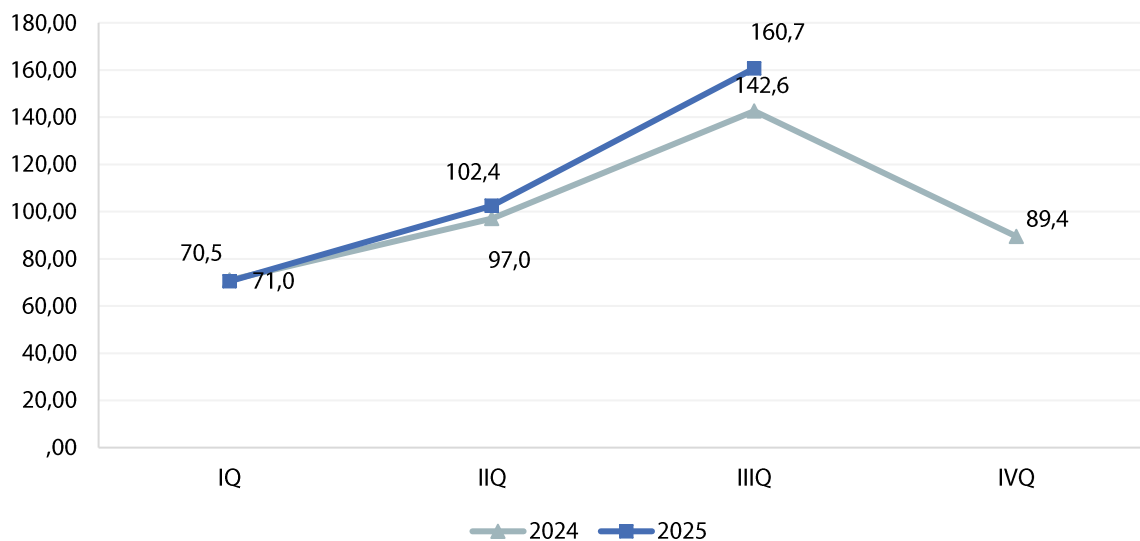
Robni / Goods



	ŽELJEZNIČKI SAOBRAČAJ / RAILWAY TRANSPORT					
	Putnički / Passenger			Robni / Goods		
	indeks Index	putnici u 000 Passengers, thousands	putnički km u 000 Passenger kilometres in thousands	Indeks Index	prevoz robe u 000 t Goods in thousands tonnes	tonski km u 000 Tonne-kilometres in thousands
2022	74,3	778	51 820	139,7	1 346	188 793
2023	97,3	853	67 803	120,7	1 114	163 164
2024	100,0	864	69 705	100,0	1 000	135 128
2024						
I kvartal/ quarter	66,3	159	11 553	135,0	324	45 592
II kvartal/ quarter	114,0	242	19 862	72,6	185	24 525
III kvartal/ quarter	147,9	299	25 770	91,3	236	30 856
IV kvartal/ quarter	71,8	164	12 520	101,1	255	34 155
2025						
I kvartal/ quarter	59,4	138	10 354	118,0	308	39 870
II kvartal/ quarter	104,7	225	18 252	102,5	242	34 637
III kvartal/ quarter	118,1	256	20 584	95,3	185	32 184
IV kvartal/ quarter						

DRUMSKI SAOBRAĆAJ - PUTNIČKI / ROAD TRANSPORT – PASSENGERS

Ø 2024 = 100



Ø 2024 = 100

	DRUMSKI SAOBRAĆAJ / ROAD TRANSPORT							
	PUTNIČKI / PASSENGERS				ROBNI / GOODS			
	indeks Index	putnici u 000 Passengers, thous.	putnički km u 000 Passenger kilometres in thous.	autobuski km u 000 Buskilometres in thous	indeks Index	roba u 000 tona Goods in thousands tonnes	tonski km u 000 Tonne- kilometres in thous.	Pređeni km vozila sa utovarom, u hilj. Kilometres made, in thous.
2022	90,1	5 831	51 532	14 223	92,5	875	112 402	5 495
2023	91,0	6 320	52 052	12 862	101,3	961	123 020	5 152
2024	100,0	7 050	57 177	13 879	100,0	1 019	121 482	6 713
2024								
I kvartal/ quarter	71,0	838	10 156	2 598	81,9	267	24 864	1 186
II kvartal/quarter	97,0	1 511	13 865	3 316	86,5	254	26 262	1 392
III kvartal/ quarter	142,6	2 659	20 383	4 099	129,5	242	39 341	1 754
IV kvartal/ quarter	89,4	2 042	12 773	3 866	102,1	256	31 015	2 381
2025								
I kvartal/ quarter	70,5	822	10 082	3 006	143,9	261	43 689	1 925
II kvartal/quarter	102,4	1 580	14 633	3 528	165,4	249	50 240	2 680
III kvartal/ quarter	160,7	2 664	22 978	4 127	140,0	245	42 512	1 908
IV kvartal/ quarter								

PROMET NA AERODROMIMA / TRAFFIC AT AIRPORTS

Ø 2024 = 100

	PUTNIČKI / PASSENGERS		ROBNI / GOODS
	indeks Index	prevoz putnika Transport of passengers	prevoz robe u tonama Transport of goods in tonnes
2022	66,5	1 908 552	419
2023	86,8	2 493 209	609
2024	100,0	2 871 774	709
2024			
I kvartal/ quarter	51,1	318 539	135
II kvartal/quarter	128,8	802 618	165
III kvartal/ quarter	205,3	1 279 437	207
IV kvartal/ quarter	75,6	2 871 774	709
2025			
I kvartal/ quarter	43,0	308 491	119
II kvartal/quarter	124,1	890 767	160
III kvartal/ quarter	194,6	1 397 271	186
IV kvartal/ quarter			

GRADSKI SAOBRAĆAJ / LOCAL TRANSPORT

Kvartali/ Quarters	indeks Index	prevezeno putnika u 000 Passengers in thousands
2022	54,0	1 298
2023	66,9	1 607
2024	100,0	2 402
2024		
I kvartal/ quarter	106,9	642
II kvartal/quarter	100,2	602
III kvartal/ quarter	91,1	547
IV kvartal/ quarter	101,7	611
2025		
I kvartal/ quarter	106,1	637
II kvartal/quarter	78,3	470
III kvartal/ quarter	93,3	560
IV kvartal/ quarter		

POMORSKI SAOBRAĆAJ / MARINE TRANSPORT

Ø 2024 = 100

	Promet u lukama (u tonama) / Turnover in harbours (tonnes)			
	indeks Index	ukupno Total	izvoz Export	uvoz ¹⁾ Import
2022	118,8	2 928 899	1 828 320	1 100 579
2023	97,8	2 409 839	1 409 978	999 861
2024	100,0	2 464 492	1 410 482	1 054 010
2024				
I kvartal/ quarter	90,0	554 462	378 477	175 985
II kvartal/quarter	108,1	665 850	395 536	270 314
III kvartal/ quarter	105,3	648 553	367 599	280 954
IV kvartal/ quarter	96,7	595 627	268 870	326 757
2025				
I kvartal/ quarter	89,8	553 108	344 520	208 588
II kvartal/quarter	108,7	669 827	307 999	361 828
III kvartal/ quarter	109,6	675 461	306 184	369 277
IV kvartal/ quarter				

¹⁾Tranzit prikazan kod uvoza¹⁾Transit presented in import

P T T SAOBRAĆAJ / POSTAL, TELEGRAPH AND TELEPHONE (PTT) COMMUNICATIONS

	Poštanske usluge / Postal services			Telefonske usluge / Telephone services	
	pisma u 000 komada Letters in thousands pcs,	paketi u 000 komada Packages in thousands pcs,	Tiskovine i ostalo, u 000 komada Other printed papers in thousands pcs,	fiksna telefonija Fixed telephony	mobilna telefonija Mobile telephony
				minuti u 000 Minutes in thous,	minuti u 000 Minutes in thous,
2022	15 497	47	129	71 484	2 730 005
2023	15 590	36	78	56 719	2 631 298
2024	14 021	30	75	48 272	2 536 317
2024					
I kvartal/ quarter	3 314	7	20	12 979	607 802
II kvartal/quarter	3 228	7	18	12 162	668 713
III kvartal/ quarter	3 658	8	17	11 675	755 460
IV kvartal/ quarter	3 821	8	20	11 456	504 342
2025					
I kvartal/ quarter	3 131	5	27	10 698	608 575
II kvartal/quarter	3 335	5	23	9 951	699 423
III kvartal/ quarter	2 675	5	19	9 699	790 698
IV kvartal/ quarter					