

Indices of physical volume of publicly owned forest assortments production *December 2011*

Production of forest assortments from state forests in Montenegro for period January – December 2011 compared with the same period of previous year increased 11.2%.

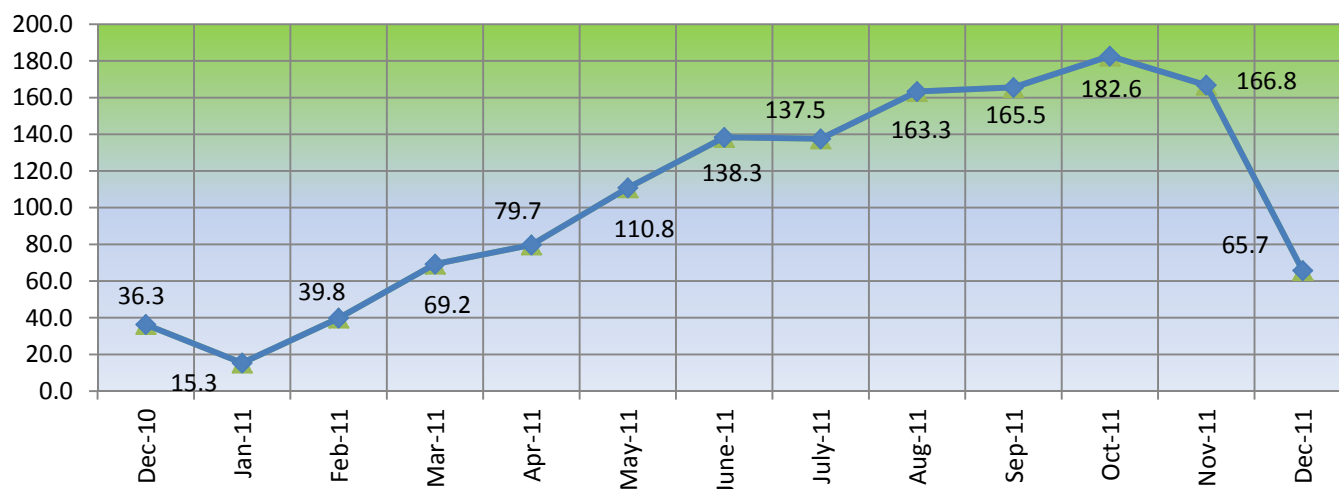
Production of forest assortments from state forests in Montenegro in December 2011 compared to December 2010 increased 81%.

Production of hardwoods publicly owned in Montenegro for period January - December 2011 in m³ compared with same period of previous year has been increased for 19.655 m³, i.e. for 24.7%.

Production of cord coniferous wood publicly owned in Montenegro for period January - December 2011 in m³, compared with same period of previous year has been increased for 14.846 m³, i.e. for 74.3 %.

Production of fuel wood of coniferous publicly owned in Montenegro for period January - December 2011 in m³, compared with same period of previous year has been reduced for 143 m³, i.e. for 28.4%.

Indices of physical volume of publicly owned forest assortments production (Ø2010=100)



Indices of physical volume of publicly owned forest assortments production December 2011

MONTENEGRO (Ø2010=100)	<u>Dec-10</u> Ø2010	<u>Jan-Dec-10</u> Ø2010	<u>Dec-11</u> Ø2010	<u>Jan-Dec-11</u> Ø2010	<u>Dec-11</u> Dec-10	<u>Jan-Dec-11</u> Jan-Dec-10
TOTAL	36.3	100.0	65.7	112.2	181.0	111.2

Production of forest assortments publicly owned December 2011

					m ³
MONTENEGRO	2010	2010	2011	2011	
	Dec	Jan-Dec	Dec	Jan-Dec	
Coniferous	5964	176944	10956	194613	
Broadleaf	1884	79466	3840	99121	
Coniferous logs	4770	146074	8202	151956	
Mining wood, coniferous	272	10373	463	7244	
Other long coniferous wood	-	-	-	213	
Cord coniferous wood	908	19993	2248	34839	
Broadleaf logs	424	32851	1058	44910	
Cord broadleaf wood	158	6349	1561	12662	
Fuel wood - coniferous	14	504	43	361	
Fuel wood - hardwoods	1302	40266	1221	41549	
TOTAL:	7848	256410	14796	293734	

METHODOLOGICAL EXPLANATIONS

The report on production of forestry products is monthly submitted. The report is submitted by all enterprises producing commercial timbers in state-owned forests, no matter if the forest management is their main industry or not.

The report provides: data on produced quantity of forestry products received from regular felling of trees for the reporting month; data on produced quantity of forestry products since the beginning of year until the end of reporting month; data on sold – sent quantities of forestry products in the reporting month; data on sold quantities of forestry products since the beginning of year until the end of reporting month.

Indices of forest assortments are calculated on the basis of simple non-weighted comparison and weighted index which is used in Statistical Office of Montenegro is not comparable. This is the reason why every assortment is separately weighted. An ideal matching of these two indicators is not possible, except in the cases when the production is absolutely identical, what is in reality impossible. If there the attention was paid to weighted coefficients, i.e. on values which they represent, then there would have been possible to compare physical volume of production in the manner it is provided. But, in this way calculated index does not present neither quantitative nor qualitative changes within the volume of forest assortments.

Issued and printed by Statistical Office of Montenegro (MONSTAT)
81000 Podgorica, IV Proleterske 2, Phone (+382) 20 230-811, Fax (+382) 20 230-814

The release prepared by:

MSc Nataša VUČKOVIĆ

Phone +382-20-231 004

natasa.vuckovic@monstat.org