

When using these data,  
 please name the source

## External trade of Montenegro January- November 2012

**The total external trade** of Montenegro for period January-November 2012 is EUR 2 015.3 million, indicating the drop of 3% in comparison with the same month of the previous year.

The value of **exports of goods** is EUR 334.4 million, what is 20% less compared to the same period of previous year, **and imports** are EUR 1 680.9 million, what is 1.3% higher compared to the same period of previous year.

**The coverage of import by export** is 19.9%, and it is lower compared to the coverage for the same period of previous year, when it was 25.2%.

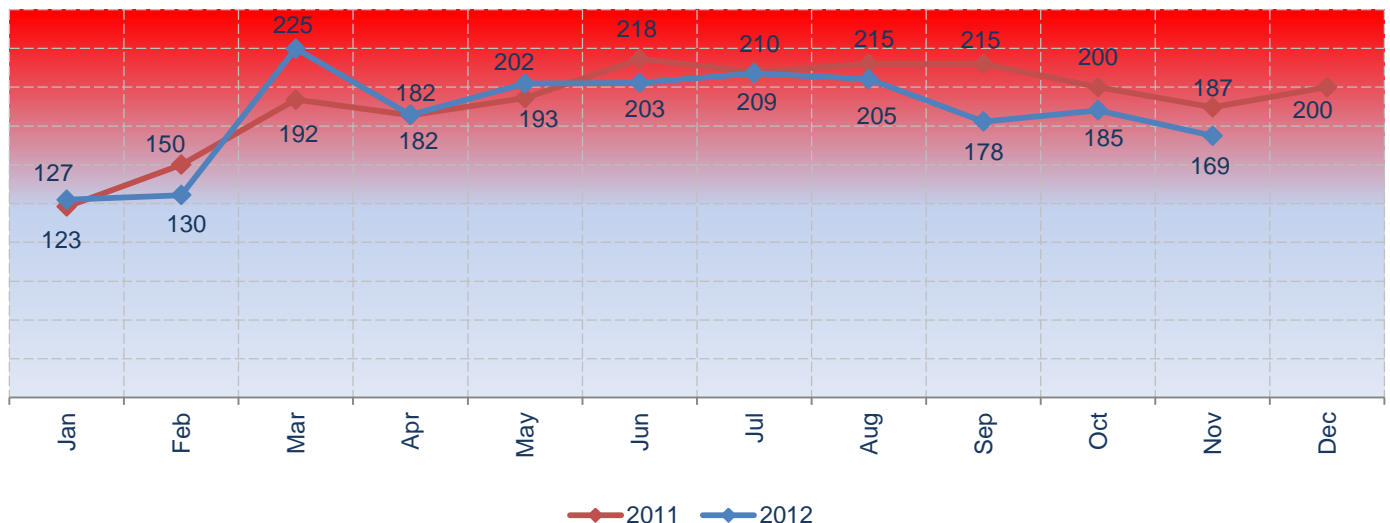
**Structure of exports** in accordance with the SITC (Standard International Trade Classification) the most present products are **Manufactured goods classified chiefly by material**– Section 6, in amount of EUR 145.5 million (consisted of: Non-ferrous metals with the amount of EUR 121.8 million, and Iron and steel with EUR 15.4 million).

**The structure of imports** in accordance with the classification SITC (Standard International Trade Classification) is presented mostly products of Section 0 – Food and live animals with EUR 325.2 million (consisted of: Meat and meat preparations with EUR 74 million, and Cereals and cereal preparations with EUR 52.8 million).

**Main trading partners in exports** with individual basis were: Croatia (EUR 77.7 million), Serbia (EUR 74 million) and Slovenia (EUR 27.5 million).

**Main trading partners in imports** with individual basis were: Serbia (EUR 494.9 million), Greece (EUR 147.5 million), and China (EUR 122.8 million). The highest external trade trend was with CEFTA and EU countries.

### Chapter 1. External trade trend of Montenegro in mil. EUR



**Table 1. External trade trend of Montenegro 2007 – November 2012**

in EUR 1000

PERIOD	IMPORT	EXPORT	TRADE BALANCE
<b>2007</b>	<b>2 073 093</b>	<b>454 739</b>	<b>-1 618 355</b>
<b>2008</b>	<b>2 529 741</b>	<b>416 165</b>	<b>-2 113 576</b>
<b>2009</b>	<b>1 654 170</b>	<b>277 011</b>	<b>-1 377 159</b>
<b>2010</b>			
January	74 054	13 566	-60 488
February	107 057	18 624	-88 434
March	129 785	23 591	-106 194
April	136 810	26 030	-110 780
May	138 117	36 010	-102 107
June	168 997	24 372	-144 625
July	172 865	29 635	-143 230
August	155 789	29 794	-125 995
September	142 459	27 480	-114 979
October	138 681	28 799	-109 882
November	143 638	42 931	-100 706
December	149 078	29 535	-119 542
<b>2011</b>			
January	85 414	37 466	-47 948
February	117 803	31 708	-86 096
March	149 762	42 032	-107 730
April	145 845	35 787	-110 058
May	159 530	33 502	-126 028
June	184 974	32 973	-152 001
July	175 859	33 999	-141 861
August	172 498	42 007	-130 491
September	173 055	42 381	-130 675
October	151 577	48 328	-103 249
November	143 562	37 882	-105 680
December	163 457	36 317	-127 140
<b>2012</b>			
January	99 928	27 473	-72 455
February	106 536	23 911	-82 624
March	191 386	33 380	-158 006
April	150 963	31 239	-119 723
May	167 726	34 502	-133 223
June	170 820	31 926	-138 895
July	177 550	31 294	-146 256
August	173 342	31 774	-141 569
September	147 700	30 122	-117 578
October	158 609	26 476	-132 133
November	136 332	32 293	-104 039

**Table 2. Import of Montenegro by continents**

in EUR 1000

Period	World	Europe	Africa	America	Asia	Oceania and polar region
<b>2007</b>	<b>2 073 093</b>	<b>1 809 699</b>	<b>2 560</b>	<b>66 926</b>	<b>193 421</b>	<b>487</b>
<b>2008</b>	<b>2 529 741</b>	<b>2 214 291</b>	<b>4 180</b>	<b>87 041</b>	<b>223 934</b>	<b>295</b>
<b>2009</b>	<b>1 654 170</b>	<b>1 450 892</b>	<b>2 708</b>	<b>56 159</b>	<b>143 926</b>	<b>485</b>
<b>2010</b>						
January	74 054	63 591	89	3 806	6 538	30
February	107 057	92 902	160	4 048	9 916	31
Mach	129 785	111 141	296	5 065	13 226	57
April	136 810	120 981	239	3 481	12 057	51
May	138 117	121 629	166	4 594	11 652	75
June	168 997	150 137	1 507	3 289	13 966	98
July	172 865	152 593	486	6 006	13 641	139
August	155 789	137 354	362	4 840	13 188	46
September	142 459	122 048	654	5 375	14 354	28
October	138 681	119 400	162	3 411	15 683	25
November	143 638	126 433	243	4 501	12 455	7
December	149 078	130 202	177	5 457	13 232	11
<b>2011</b>						
January	85 414	74 132	159	2 824	8 293	6
February	117 803	102 678	269	3 731	11 124	1
Mach	149 762	129 079	228	3 742	16 607	106
April	145 845	126 913	1 921	3 127	13 864	20
May	159 530	140 087	1 515	3 888	13 943	97
June	184 974	157 584	7 966	4 451	14 953	20
July	175 859	157 890	358	4 353	13 212	46
August	172 498	152 431	360	5 188	14 500	19
September	173 055	151 113	253	4 201	17 463	24
October	151 577	133 216	233	3 656	14 432	40
November	143 562	123 106	285	5 449	14 712	10
December	163 457	144 219	287	5 932	12 985	33
<b>2012</b>						
January	99 928	88 124	199	3 823	7 761	21
February	106 536	92 538	185	3 462	10 330	21
March	191 386	147 382	280	5 933	37 761	30
April	150 963	132 535	320	2 949	15 143	17
May	167 726	148 921	247	4 030	14 468	59
June	170 820	152 045	438	2 976	15 326	36
July	177 550	158 913	381	3 538	14 673	45
August	173 342	154 247	372	3 685	14 936	102
September	147 700	128 328	394	3 398	15 471	110
October	158 609	139 622	286	3 151	15 539	11
November	136 332	118 328	242	2 911	14 806	45

**Table 3. Share of external trade by continents**

Year	World	Europe	Africa	America	Asia	Oceania and polar region
<b>2007</b>	100%	87%	0%	3%	9%	0%
<b>2008</b>	100%	87%	0%	3%	9%	0%
<b>2009</b>	100%	88%	0%	3%	9%	0%
<b>2010</b>	100%	87%	0%	3%	9%	0%
<b>2011</b>	100%	87%	1%	3%	9%	0%

**Table 4. Exports of Montenegro by continents**

in EUR 1000

Period	World	Europe	Africa	America	Asia	Oceania and polar region
<b>2007</b>	<b>454 739</b>	<b>450 774</b>	<b>1 066</b>	<b>2 001</b>	<b>890</b>	<b>7</b>
<b>2008</b>	<b>416 165</b>	<b>412 042</b>	<b>1 116</b>	<b>1 099</b>	<b>1 902</b>	<b>7</b>
<b>2009</b>	<b>277 011</b>	<b>265 753</b>	<b>958</b>	<b>7 559</b>	<b>2 741</b>	<b>0</b>
<b>2010</b>						
January	13 566	13 491	13	8	54	0
February	18 624	18 569	20	29	6	0
Mach	23 591	23 172	81	50	279	8
April	26 030	24 529	3	173	1 325	0
May	36 010	35 381	67	9	543	10
June	24 372	23 714	473	51	1	133
July	29 635	29 468	45	12	109	0
August	29 794	29 615	0	6	166	8
September	27 480	27 023	9	63	371	15
October	28 799	28 543	0	90	166	0
November	42 931	42 707	35	42	147	0
December	29 535	28 998	46	85	406	0
<b>2011</b>						
January	37 466	37 214	55	38	148	11
February	31 708	31 196	0	47	457	8
Mach	42 032	41 842	83	35	65	7
April	35 787	35 650	62	52	7	16
May	33 502	33 231	0	63	208	0
June	32 973	32 446	207	25	278	17
July	33 999	33 886	5	81	12	15
August	42 007	41 419	5	107	454	24
September	42 381	41 904	2	29	445	0
October	48 328	39 403	8 414	113	386	12
November	37 882	37 131	568	29	153	0
December	36 317	35 167	628	177	345	0
<b>2012</b>						
January	27 473	27 280	0	83	97	13
February	23 911	23 713	117	1	81	0
March	33 380	33 075	1	40	264	0
April	31 239	30 795	6	173	265	0
May	34 502	33 324	3	85	1 080	10
June	31 926	30 701	9	81	1 134	0
July	31 294	30 721	7	414	153	0
August	31 774	30 942	254	91	473	14
September	30 122	29 590	5	23	505	0
October	26 476	25 579	507	20	370	0
November	32 293	30 042	597	177	1 466	10

**Table 5. Share of external trade by continents**

Year	World	Europe	Africa	America	Asia	Oceania and polar region
<b>2007</b>	100%	99%	0%	0%	0%	0%
<b>2008</b>	100%	99%	0%	0%	0%	0%
<b>2009</b>	100%	96%	0%	3%	1%	0%
<b>2010</b>	100%	98%	0%	0%	1%	0%
<b>2011</b>	100%	97%	2%	0%	1%	0%

**Table 6. External trade of Montenegro by continents and selected countries  
for period January-November 2011/2012**

TRADING PARTNERS	in EUR1000									
	EXPORT				IMPORT				TRADE BALANCE	
	Jan-Nov 2011	Jan-Nov 2012	Jan-Nov 2011	Jan-Nov 2012	Jan-Nov 2011	Jan-Nov 2012	Jan-Nov 2011	Jan-Nov 2012		
<b>WORLD</b>	100%	418 064	100%	334 390	100%	1 659 879	100%	1 680 892	-1 241 815	-1 346 502
<b>Europe</b>	97%	405 322	97%	325 761	87%	1 448 231	87%	1 460 981	-1 042 909	-1 135 220
<b>EU-27</b>	53%	220 444	30%	98 833	39%	649 540	38%	642 246	-429 096	-543 413
<b>CEFTA</b>	38%	158 822	61%	205 572	45%	746 891	45%	752 515	-588 069	-546 943
<b>Africa</b>	2%	9 400	0%	1 505	1%	13 548	0%	3 346	-4 148	-1 841
<b>Asia</b>	1%	2 612	2%	5 888	9%	153 101	10%	176 215	-150 489	-170 327
<b>America</b>	0%	620	0%	1 188	3%	44 611	2%	39 855	-43 991	-38 667
<b>Oceania</b>	0%	110	0%	47	0%	388	0%	495	-278	-448
<b>USA</b>	0%	458	0%	910	1%	12 681	1%	12 555	-12 223	-11 645
<b>China</b>	0%	475	1%	3 737	6%	95 485	7%	122 818	-95 010	-119 081
<b>Russia</b>	1%	2 585	2%	6 273	0%	7 758	1%	11 808	-5 173	-5 535
<b>Switzerland</b>	3%	12 575	1%	2 099	1%	16 282	1%	21 804	-3 707	-19 705
<b>Japan</b>	0%	1 132	0%	1 304	1%	17 904	1%	14 251	-16 772	-12 947
<b>Turkey</b>	2%	9 973	3%	10 851	1%	23 604	2%	26 663	-13 631	-15 812
<b>Brazil</b>	0%	1	0%	0	1%	21 826	1%	14 610	-21 825	-14 610

**Table 7. External trade by EU-27 countries and countries under CEFTA agreement**

in EUR 1000											
TRADING PARTNERS	EXPORT				IMPORT				TRADE BALANCE		
	%	2011	2011 Jan-Nov	2012 Jan-Nov	%	2011	2011 Jan-Nov	2012 Jan-Nov	2011	2011 Jan-Nov	2012 Jan-Nov
<b>WORLD</b>	<b>100</b>	<b>454 381</b>	<b>418 064</b>	<b>334 390</b>	<b>100</b>	<b>1 823 337</b>	<b>1 659 879</b>	<b>1 680 892</b>	<b>-1 368 956</b>	<b>-1 241 815</b>	<b>-1 346 502</b>
<b>EU-27</b>	<b>50</b>	<b>227 459</b>	<b>220 444</b>	<b>98 833</b>	<b>39</b>	<b>714 369</b>	<b>649 540</b>	<b>642 246</b>	<b>-486 910</b>	<b>-429 096</b>	<b>-543 413</b>
Austria	1	5 211	5 058	3 373	2	41 413	37 720	29 689	-36 202	-32 662	-26 316
Belgium	0	367	367	174	0	6 667	5 893	7 827	-6 300	-5 526	-7 653
Bulgaria	0	10	10	367	0	8 922	8 034	8 172	-8 912	-8 025	-7 806
Czech Republic	1	5 571	5 571	1 588	1	20 725	19 197	17 360	-15 154	-13 627	-15 772
Denmark	0	22	22	8	0	3 351	2 868	3 209	-3 330	-2 846	-3 200
Estonia	0	0	0	55	0	140	136	186	-140	-136	-131
Finland	0	1 596	1 594	781	0	1 558	1 483	1 088	38	112	-307
France	0	1 753	1 615	2 246	2	31 622	27 548	20 507	-29 869	-25 934	-18 262
Greece	9	39 285	39 066	3 570	8	144 704	139 074	147 525	-105 418	-100 007	-143 955
Netherlands	1	3 246	2 888	2 437	2	27 573	23 430	28 492	-24 327	-20 542	-26 055
Ireland	0	0	0	1	0	2 239	2 004	2 344	-2 239	-2 004	-2 343
Italy	7	31 064	29 610	11 642	6	117 519	102 182	104 140	-86 455	-72 572	-92 497
Cyprus	0	188	188	28	0	614	523	522	-426	-334	-494
Latvia	0	54	54	195	0	104	94	105	-49	-40	90
Lithuania	0	0	0	195	0	62	61	98	-62	-61	97
Luxembourg	0	434	434	85	0	293	282	213	141	152	-128
Hungary	17	76 859	76 354	17 488	1	17 139	15 336	16 951	59 720	61 018	537
Malta	0	177	161	108	0	2	2	4	175	158	104
Germany	5	20 508	19 961	13 975	6	110 813	99 377	105 173	-90 305	-79 417	-91 198
Poland	1	3 737	3 496	4 172	1	13 529	12 361	11 644	-9 792	-8 864	-7 472
Portugal	0	0	0	0	0	575	516	463	-575	-516	-463
Romania	0	473	59	2 205	2	32 903	30 749	24 744	-32 430	-30 690	-22 539
Slovakia	0	408	400	204	1	9 149	8 833	4 335	-8 741	-8 432	-4 131
Slovenia	7	30 293	27 806	27 506	4	81 085	73 626	67 691	-50 791	-45 820	-40 185
Spain	0	314	311	28	1	22 965	21 025	19 869	-22 651	-20 713	-19 841
Sweden	0	1 465	1 309	2 025	0	5 046	4 813	3 268	-3 581	-3 503	-1 243
United Kingdom	1	4 425	4 110	4 377	1	13 658	12 373	16 627	-9 234	-8 263	-12 250
<b>CEFTA</b>	<b>40</b>	<b>183 590</b>	<b>158 822</b>	<b>205 572</b>	<b>45</b>	<b>818 948</b>	<b>746 891</b>	<b>752 515</b>	<b>-635 358</b>	<b>-588 069</b>	<b>-546 943</b>
Albania	2	10 360	9 746	6 398	1	12 721	11 975	12 892	-2 360	-2 229	-6 494
Bosnia and Herzegovina	5	22 412	18 532	23 854	8	142 507	130 347	113 497	-120 095	-111 815	-89 644
Macedonia	0	1 417	1 201	2 109	1	27 158	24 839	25 355	-25 741	-23 638	-23 246
Moldavia	0	0	0	0	0	146	142	135	-146	-142	-135
Croatia	10	45 892	34 717	77 740	5	92 777	83 183	101 885	-46 885	-48 466	-24 145
Serbia	18	79 820	73 747	74 026	30	541 456	494 347	494 860	-461 636	-420 600	-420 834
UMNIK Kosovo	5	23 688	20 879	21 446	0	2 182	2 059	3 891	21 505	18 820	17 555
<b>Other countries</b>	<b>10</b>	<b>43 332</b>	<b>38 798</b>	<b>29 984</b>	<b>16</b>	<b>290 020</b>	<b>263 448</b>	<b>286 131</b>	<b>-246 688</b>	<b>-224 650</b>	<b>-256 146</b>

**Table 8. External trade of Montenegro with EU-27, USA, Japan, and China**

Period	EU-27		USA		JAPAN		CHINA	
	Value in thous. euro	%	Value in thous. euro	%	Value in thous. euro	%	Value in thous. euro	%
<b>EXPORT</b>								
<b>2008</b>	<b>258 800</b>	<b>62</b>	<b>892</b>	<b>0</b>	<b>145</b>	<b>0</b>	<b>152</b>	<b>0</b>
<b>2009</b>	<b>133 827</b>	<b>48</b>	<b>7 407</b>	<b>3</b>	<b>12</b>	<b>0</b>	<b>95</b>	<b>0</b>
<b>2010</b>	<b>184 817</b>	<b>56</b>	<b>461</b>	<b>0</b>	<b>544</b>	<b>0</b>	<b>149</b>	<b>0</b>
<b>2011</b>								
January	29 314	78	38	0	147	0	0	0
February	13 824	44	37	0	0	0	1	0
Mach	26 609	63	35	0	65	0	0	0
April	22 230	62	32	0	0	0	3	0
May	20 338	61	61	0	141	0	63	0
June	17 987	55	25	0	155	0	0	0
July	11 152	33	11	0	0	0	0	0
August	21 933	52	91	0	239	1	154	0
September	22 791	54	29	0	222	1	17	0
October	22 879	47	68	0	163	0	147	0
November	11 388	30	29	0	0	0	89	0
December	7 015	19	152	0	0	0	273	1
<b>2012</b>								
January	8 945	33	83	0	97	0	0	0
February	7 555	32	1	0	0	0	12	0
Mach	8 231	25	17	0	149	0	103	0
April	10 462	33	173	1	74	0	9	0
May	14 111	41	13	0	234	1	846	2
June	10 065	32	73	0	143	0	927	3
July	8 542	27	368	1	148	0	0	0
August	5 758	18	17	0	0	0	148	0
September	9 885	33	0	0	96	0	391	1
October	7 762	29	20	0	135	1	190	1
November	7 516	23	145	0	230	1	1 110	3
<b>IMPORT</b>								
<b>2008</b>	<b>1 081 175</b>	<b>43</b>	<b>55 963</b>	<b>2</b>	<b>40 602</b>	<b>2</b>	<b>123 834</b>	<b>5</b>
<b>2009</b>	<b>620 593</b>	<b>38</b>	<b>17 604</b>	<b>1</b>	<b>19 685</b>	<b>1</b>	<b>90 343</b>	<b>5</b>
<b>2010</b>	<b>625 207</b>	<b>38</b>	<b>15 367</b>	<b>1</b>	<b>19 822</b>	<b>1</b>	<b>88 864</b>	<b>5</b>
<b>2011</b>								
January	33 231	39	923	1	1 191	1	5 015	6
February	48 347	41	917	1	1 468	1	6 372	5
Mach	60 200	40	1 218	1	2 055	1	11 024	7
April	56 646	39	1 164	1	1 542	1	8 428	6
May	68 453	43	1 191	1	1 406	1	9 170	6
June	68 227	37	1 351	1	1 371	1	9 849	5
July	67 685	38	1 081	1	1 344	1	8 271	5
August	63 320	37	1 511	1	1 343	1	8 991	5
September	67 655	39	943	1	2 102	1	10 414	6
October	58 515	39	854	1	1 588	1	9 156	6
November	57 263	40	1 527	1	2 493	2	8 795	6
December	64 829	40	1 279	1	1 747	1	7 595	5
<b>2012</b>								
January	40 567	41	678	1	886	1	4 829	5
February	42 085	40	688	1	1 174	1	6 596	6
March	67 468	35	1 166	1	1 403	1	31 511	16
April	57 913	38	1 238	1	1 247	1	9 650	6
May	67 873	40	1 291	1	1 500	1	9 335	6
June	63 175	37	1 658	1	1 394	1	10 537	6
July	67 459	38	1 407	1	1 419	1	9 880	6
August	67 844	39	1 210	1	1 368	1	9 203	5
September	52 898	36	750	1	1 051	1	10 475	7
October	63 253	40	1 236	1	1 511	1	10 246	6
November	51 710	38	1 233	1	1 299	1	10 556	8

**Table 9. Export classified by SITC products for EU, CEFTA, USA, Japan, and China**

SITC CLASSIFICATION	in EUR 1000							
	2009		2010		2011		Jan-Nov 2011	Jan- Nov 2012
<b>WORLD</b>	<b>277 011</b>	<b>100%</b>	<b>330 367</b>	<b>100%</b>	<b>454 381</b>	<b>100%</b>	<b>418 064</b>	<b>334 390</b>
<b>0-9 TOTAL</b>	277 011	100%	330 367	100%	454 381	100%	418 064	334 390
0+1 Food, beverages and tobacco	40 158	14%	45 039	14%	50 662	11%	42 931	45 126
2+4 Raw materials	25 410	9%	46 000	14%	65 626	14%	60 041	55 045
3 Mineral fuels, lubricants and related materials	8 375	3%	33 286	10%	62 957	14%	59 731	43 821
5 Chemicals	11 824	4%	12 916	4%	12 083	3%	10 935	11 039
7 Machinery and transport equipment	27 745	10%	27 047	8%	23 899	5%	21 494	23 209
6+8 Other manufactured goods	163 174	59%	166 078	50%	236 353	52%	220 131	153 004
<b>EU-27</b>	<b>133 827</b>	<b>48%</b>	<b>184 817</b>	<b>56%</b>	<b>227 459</b>	<b>50%</b>	<b>220 444</b>	<b>98 833</b>
<b>0-9 TOTAL</b>	133 827	48%	184 817	56%	227 459	50%	220 444	98 833
0+1 Food, beverages and tobacco	6 159	2%	5 485	2%	6 221	1%	6 098	4 324
2+4 Raw materials	9 056	3%	18 179	6%	26 804	6%	25 127	20 837
3 Mineral fuels, lubricants and related materials	5 286	2%	18 355	6%	16 351	4%	15 694	9 783
5 Chemicals	113	0%	219	0%	356	0%	272	603
7 Machinery and transport equipment	9 062	3%	9 558	3%	10 552	2%	9 284	12 262
6+8 Other manufactured goods	104 151	38%	133 023	40%	164 375	36%	161 169	48 097
<b>CEFTA</b>	<b>127 946</b>	<b>46%</b>	<b>130 521</b>	<b>40%</b>	<b>183 590</b>	<b>40%</b>	<b>158 822</b>	<b>205 572</b>
<b>0-9 TOTAL</b>	127 946	46%	130 521	40%	183 590	40%	158 822	205 572
0+1 Food, beverages and tobacco	31 618	11%	36 493	11%	39 934	9%	33 004	32 788
2+4 Raw materials	15 171	5%	22 516	7%	25 830	6%	24 218	20 555
3 Mineral fuels, lubricants and related materials	3 082	1%	13 192	4%	34 939	8%	33 139	32 552
5 Chemicals	11 626	4%	12 695	4%	11 673	3%	10 614	10 375
7 Machinery and transport equipment	9 970	4%	14 478	4%	10 296	2%	9 231	6 059
6+8 Other manufactured goods	56 154	20%	31 147	9%	60 917	13%	48 616	103 023
<b>USA</b>	<b>7 407</b>	<b>3%</b>	<b>461</b>	<b>0%</b>	<b>610</b>	<b>0%</b>	<b>458</b>	<b>910</b>
<b>0-9 TOTAL</b>	7 407	3%	461	0%	610	0%	458	910
0+1 Food, beverages and tobacco	239	0%	284	0%	457	0%	306	216
2+4 Raw materials	6	0%	3	0%	11	0%	11	0
3 Mineral fuels, lubricants and related materials	0	0%	0	0%	0	0%	0	0
5 Chemicals	0	0%	0	0%	0	0%	0	0
7 Machinery and transport equipment	7 160	3%	140	0%	59	0%	58	479
6+8 Other manufactured goods	2	0%	34	0%	83	0%	83	214
<b>Japan</b>	<b>12</b>	<b>0%</b>	<b>544</b>	<b>0%</b>	<b>1 132</b>	<b>0%</b>	<b>1 132</b>	<b>1 304</b>
<b>0-9 TOTAL</b>	12	0%	544	0%	1 132	0%	1 132	1 304
0+1 Food, beverages and tobacco	0	0%	0	0%	0	0%	0	0
2+4 Raw materials	0	0%	0	0%	0	0%	0	113
3 Mineral fuels, lubricants and related materials	0	0%	0	0%	0	0%	0	0
5 Chemicals	0	0%	0	0%	0	0%	0	0
7 Machinery and transport equipment	12	0%	544	0%	1 121	0%	1 121	1 191
6+8 Other manufactured goods	0	0%	0	0%	11	0%	11	0
<b>China</b>	<b>95</b>	<b>0%</b>	<b>149</b>	<b>0%</b>	<b>748</b>	<b>0%</b>	<b>475</b>	<b>3 737</b>
<b>0-9 TOTAL</b>	95	0%	149	0%	748	0%	475	3 737
0+1 Food, beverages and tobacco	51	0%	107	0%	746	0%	474	1 116
2+4 Raw materials	22	0%	0	0%	0	0%	0	2 478
3 Mineral fuels, lubricants and related materials	0	0%	0	0%	0	0%	0	0
5 Chemicals	0	0%	0	0%	0	0%	0	2
7 Machinery and transport equipment	0	0%	11	0%	2	0%	1	141
6+8 Other manufactured goods	23	0%	31	0%	0	0%	0	0

**Table 10. Import classified by SITC products for EU, CEFTA, USA, Japan, and China**

in EUR 1000

SITC CLASSIFICATION	2009		2010		2011		Jan-Nov 2011	Jan- Nov 2012
<b>WORLD</b>	<b>1 654 170</b>	<b>100%</b>	<b>1 657 329</b>	<b>100%</b>	<b>1 823 337</b>	<b>100%</b>	<b>1 659 879</b>	<b>1 680 892</b>
<b>0-9 TOTAL</b>	1 654 170	100%	1 657 329	100%	1 823 337	100%	1 659 879	1 680 892
0+1 Food, beverages and tobacco	379 713	23%	388 139	23%	417 706	23%	379 318	384 807
2+4 Raw materials	50 295	3%	82 811	5%	99 263	5%	90 272	71 108
3 Mineral fuels, lubricants and related materials	208 057	13%	209 660	13%	330 590	18%	300 941	313 872
5 Chemicals	167 918	10%	162 956	10%	169 589	9%	154 523	155 742
7 Machinery and transport equipment	357 735	22%	340 607	21%	315 905	17%	284 032	305 125
6+8 Other manufactured goods	490 449	30%	473 157	29%	489 549	27%	450 059	449 812
<b>EU-27</b>	<b>620 593</b>	<b>38%</b>	<b>625 207</b>	<b>38%</b>	<b>714 369</b>	<b>39%</b>	<b>649 540</b>	<b>642 246</b>
<b>0-9 TOTAL</b>	620 593	38%	625 207	38%	714 369	39%	649 540	642 246
0+1 Food, beverages and tobacco	91 561	6%	94 508	6%	108 606	6%	97 507	102 996
2+4 Raw materials	6 815	0%	5 933	0%	9 551	1%	8 938	7 698
3 Mineral fuels, lubricants and related materials	104 198	6%	131 745	8%	189 426	10%	175 354	171 820
5 Chemicals	66 198	4%	61 189	4%	75 514	4%	68 384	64 932
7 Machinery and transport equipment	191 098	12%	181 508	11%	172 376	9%	154 823	150 913
6+8 Other manufactured goods	160 724	10%	150 325	9%	158 164	9%	143 802	143 463
<b>CEFTA</b>	<b>648 702</b>	<b>39%</b>	<b>670 000</b>	<b>40%</b>	<b>818 948</b>	<b>45%</b>	<b>746 891</b>	<b>752 515</b>
<b>0-9 TOTAL</b>	648 702	39%	670 000	40%	818 948	45%	746 891	752 515
0+1 Food, beverages and tobacco	240 400	15%	239 359	14%	264 705	15%	242 452	248 423
2+4 Raw materials	38 894	2%	71 139	4%	81 239	4%	73 639	57 642
3 Mineral fuels, lubricants and related materials	46 187	3%	49 943	3%	130 380	7%	117 712	123 670
5 Chemicals	62 342	4%	60 430	4%	75 572	4%	69 584	71 648
7 Machinery and transport equipment	40 094	2%	39 306	2%	46 239	3%	40 778	45 378
6+8 Other manufactured goods	220 784	13%	209 822	13%	220 811	12%	202 725	205 754
<b>USA</b>	<b>17 604</b>	<b>1%</b>	<b>15 367</b>	<b>1%</b>	<b>13 959</b>	<b>1%</b>	<b>12 681</b>	<b>12 555</b>
<b>0-9 TOTAL</b>	17 604	1%	15 367	1%	13 959	1%	12 681	12 555
0+1 Food, beverages and tobacco	870	0%	875	0%	890	0%	773	1 052
2+4 Raw materials	104	0%	206	0%	215	0%	213	62
3 Mineral fuels, lubricants and related materials	36	0%	68	0%	83	0%	82	31
5 Chemicals	2 673	0%	3 304	0%	3 042	0%	2 661	2 680
7 Machinery and transport equipment	9 726	1%	6 673	0%	5 933	0%	5 470	5 752
6+8 Other manufactured goods	4 196	0%	4 240	0%	3 796	0%	3 482	2 979
<b>Japan</b>	<b>19 685</b>	<b>1%</b>	<b>19 822</b>	<b>1%</b>	<b>19 650</b>	<b>1%</b>	<b>17 904</b>	<b>14 251</b>
<b>0-9 TOTAL</b>	19 685	1%	19 822	1%	19 650	1%	17 904	14 251
0+1 Food, beverages and tobacco	10	0%	29	0%	17	0%	17	10
2+4 Raw materials	2	0%	4	0%	3	0%	3	1
3 Mineral fuels, lubricants and related materials	25	0%	16	0%	20	0%	19	41
5 Chemicals	1 136	0%	730	0%	447	0%	426	436
7 Machinery and transport equipment	16 253	1%	15 499	1%	14 815	1%	13 592	10 383
6+8 Other manufactured goods	2 258	0%	3 544	0%	4 348	0%	3 847	3 379
<b>China</b>	<b>90 343</b>	<b>5%</b>	<b>88 864</b>	<b>5%</b>	<b>103 080</b>	<b>6%</b>	<b>95 485</b>	<b>122 818</b>
<b>0-9 TOTAL</b>	90 343	5%	88 864	5%	103 080	6%	95 485	122 818
0+1 Food, beverages and tobacco	992	0%	853	0%	898	0%	835	840
2+4 Raw materials	569	0%	414	0%	398	0%	368	300
3 Mineral fuels, lubricants and related materials	4	0%	0	0%	2	0%	2	14
5 Chemicals	2 458	0%	2 665	0%	2 852	0%	2 516	3 627
7 Machinery and transport equipment	43 033	3%	38 122	2%	45 215	2%	41 497	63 027
6+8 Other manufactured goods	43 288	3%	46 809	3%	53 714	3%	50 266	55 009

**Table 11. Export of Montenegro by SITC sections**

in EUR 1000

<b>BREAKDOWN BY SITC SECTIONS</b>	<b>2009</b>	<b>2010</b>	<b>Index 2010 2009</b>	<b>2011</b>	<b>Index 2011 2010</b>	<b>Jan-Nov 2011</b>	<b>Jan-Nov 2012</b>	<b>Index Jan-Nov 12 Jan-Nov 11</b>
<b>0-9 TOTAL</b>	<b>277 011</b>	<b>330 367</b>	<b>119</b>	<b>454 381</b>	<b>138</b>	<b>418 064</b>	<b>334 390</b>	<b>80</b>
<b>0 Food and live animals</b>	<b>18 409</b>	<b>23 930</b>	<b>130</b>	<b>27 583</b>	<b>115</b>	<b>25 230</b>	<b>25 722</b>	<b>102</b>
00 Live animals	13	9	69	12	138	12	10	79
01 Meat and meat preparations	5 549	5 140	93	5 223	102	4 581	6 102	133
02 Dairy products and eggs	1	7	700	72		61	131	215
03 Fish and preparations	1 069	472	44	188	40	187	32	17
04 Cereal and cereal products	2 505	2 523	101	3 886	154	2 910	5 347	184
05 Vegetables and fruit	6 939	9 347	135	9 601	103	9 440	7 075	75
06 Sugars, sugar preparations and honey	301	302	100	515	170	513	14	3
07 Coffee, tea, cocoa, spices, and manufactures thereof	164	2 962		2 865	97	2 668	3 587	134
08 Feeding stuff for animals (not including unmilled cereals)	431	118	27	82	69	82	53	65
09 Miscellaneous edible products and preparations	1 437	3 050	212	5 139	169	4 777	3 371	71
<b>1 Beverages and tobacco</b>	<b>21 749</b>	<b>21 109</b>	<b>97</b>	<b>23 079</b>	<b>109</b>	<b>17 701</b>	<b>19 404</b>	<b>110</b>
11 Beverages	21 049	20 975	100	22 685	108	17 354	17 753	102
12 Tobacco and tobacco manufactures	699	134	19	394	294	347	1 651	476
<b>2 Crude materials, inedible, except fuels</b>	<b>25 120</b>	<b>44 713</b>	<b>178</b>	<b>64 192</b>	<b>144</b>	<b>58 714</b>	<b>51 938</b>	<b>88</b>
21 Hides, skins and fur skins, raw	2 042	4 101	201	4 672	114	4 262	6 202	145
22 Oil-seeds and oleaginous fruits	13	0	0	0		0	0	30
23 Crude rubber	0	0		14		14	17	128
24 Cork and wood	12 862	15 790	123	18 120	115	16 651	14 351	86
25 Pulp and waste paper	481	710	148	1 237	174	1 152	1 050	91
26 Textile fibres and their wastes	31	24	77	104	433	82	81	99
27 Crude fertilizers, and crude minerals	1 987	2 993	151	1 036	35	947	1 029	109
28 Metalliferous ores and metal scrap	7 468	20 911	280	38 769	185	35 402	28 982	82
29 Crude animal and vegetable materials, n.e.s.	236	183	78	241	132	203	225	111
<b>3 Mineral fuels, lubricants and related materials</b>	<b>8 375</b>	<b>33 286</b>	<b>397</b>	<b>62 957</b>	<b>189</b>	<b>59 731</b>	<b>43 821</b>	<b>73</b>
32 Coal, coke and briquettes	2 982	3 431	115	2 560	75	2 301	2 438	106
33 Petroleum, petroleum products and related materials	5 393	12 822	238	11 303	88	10 640	8 983	84
34 Gas, natural and manufactured	0	0		0		0	0	
35 Electric current	0	17 033		49 094	288	46 791	32 401	69
<b>4 Animal oils and fats</b>	<b>291</b>	<b>1 288</b>	<b>443</b>	<b>1 434</b>	<b>111</b>	<b>1 327</b>	<b>3 107</b>	<b>234</b>
41 Animal oils and fats	97	415	428	426	103	399	491	123
42 Fixed vegetable fats and oils	82	828		940	114	888	2 176	245
43 Animal or vegetable fats and oils, processed	112	44	39	68	154	40	440	
<b>5 Chemicals</b>	<b>11 824</b>	<b>12 916</b>	<b>109</b>	<b>12 083</b>	<b>94</b>	<b>10 935</b>	<b>11 039</b>	<b>101</b>
51 Organic chemicals	76	133	175	60	45	60	73	122
52 Inorganic chemicals	92	60	65	56	94	56	5	8
53 Dyeing, tanning and colouring materials	196	837	427	1 354	162	1 336	106	8
54 Medicinal and pharmaceutical products	9 094	8 906	98	7 832	88	6 999	8 731	125
55 Essential oils, perfume materials, toilet prep.	1 332	1 424	107	1 005	71	912	823	90
56 Fertilizers (other than those of group 272)	0	22		30	136	30	2	6
57 Plastics in primary forms	26	219	842	195	89	170	326	192
58 Plastics in non-primary forms	221	547	248	402	74	402	389	97
59 Chemicals and products n.e.s.	788	768	97	1 148	150	971	585	60

/continue/

<b>BREAKDOWN BY SITC SECTIONS</b>	<b>2009</b>	<b>2010</b>	<b>Index 2010 2009</b>	<b>2011</b>	<b>Index 2011 2010</b>	<b>Jan-Nov 2011</b>	<b>Jan-Nov 2012</b>	<b>Index Jan-Nov 12 Jan-Nov 11</b>
<b>6 Manufactured goods classified chiefly by material</b>	<b>153 663</b>	<b>157 109</b>	<b>102</b>	<b>219 443</b>	<b>140</b>	<b>204 382</b>	<b>145 542</b>	<b>71</b>
61 Leather, leather manufactures and dressed fur skins	13	168		282	168	276	278	101
62 Rubber manufactures	124	266	215	242	91	233	146	63
63 Cork and wood manufactures	671	746	111	932	125	847	845	100
64 Paper, paperboard and articles of paper pulp	903	898	99	1 592	177	1 509	1 023	68
65 Textile yarn, fabrics, made-up articles and related products	104	196	188	173	88	159	240	151
66 Non-metallic mineral manufactures	746	1 000	134	1 595	159	1 451	1 381	95
67 Iron and steel	32 810	19 400	59	27 388	141	25 994	15 426	59
68 Non-ferrous metals	113 166	130 792	116	182 402	139	169 373	121 847	72
69 Manufactures of metals	5 125	3 643	71	4 837	133	4 540	4 357	96
<b>7 Machinery and transport equipment</b>	<b>27 745</b>	<b>27 047</b>	<b>97</b>	<b>23 899</b>	<b>88</b>	<b>21 494</b>	<b>23 209</b>	<b>108</b>
71 Power-generating machinery and equipment	380	384	101	440	115	356	310	87
72 Machinery specialized for particular industries	3 521	3 762	107	3 361	89	2 791	2 490	89
73 Metalworking machinery	7 129	63	1	297	471	257	264	103
74 General industrial machinery and equipment	6 181	6 147	99	9 205	150	8 376	10 229	122
75 Office machines and data-processing machines	450	395	88	536	136	522	333	64
76 Telecommunications and sound-recording and reproducing apparatus and equipment	1 128	570	51	510	90	499	1 094	219
77 Electrical machinery, apparatus and appliances	3 642	5 582	153	3 878	69	3 502	2 122	61
78 Road vehicles	2 647	3 650	138	3 693	101	3 461	3 106	90
79 Other transport equipment	2 666	6 494	244	1 978	30	1 729	3 262	189
<b>8 Miscellaneous manufactured articles</b>	<b>9 511</b>	<b>8 969</b>	<b>94</b>	<b>16 910</b>	<b>189</b>	<b>15 750</b>	<b>7 462</b>	<b>47</b>
81 Prefabricated buildings; sanitary equipment	462	573	124	198	35	169	118	70
82 Furniture, and parts thereof	668	565	85	652	115	560	604	108
83 Travel goods, handbags and similar containers	69	41	59	68	167	65	58	89
84 Articles of apparel and clothing accessories	1 274	1 176	92	760	65	713	1 001	140
85 Footwear	477	356	75	446	125	420	619	147
87 Professional, scientific and controlling instruments	204	322	158	287	89	261	204	78
88 Photographic apparatus, equipment and supplies and optical goods	30	84	280	168	200	159	227	143
89 Miscellaneous manufactured articles	6 327	5 852	92	14 330	245	13 403	4 630	35
<b>9 Commodities and transactions not classified elsewhere in the SITC</b>	<b>324</b>	<b>0</b>	<b>0</b>	<b>2 800</b>		<b>2 800</b>	<b>3 147</b>	<b>112</b>

**Table 12. Import of Montenegro by SITC sections**

in EUR 1000

<b>BREAKDOWN BY SITC SECTIONS</b>	<b>2009</b>	<b>2010</b>	<b>Index 2010 2009</b>	<b>2011</b>	<b>Index 2011 2010</b>	<b>Jan-Nov 2011</b>	<b>Jan-Nov 2012</b>	<b>Index Jan-Nov 12 Jan-Nov 11</b>
<b>0-9 TOTAL</b>	<b>1 654 170</b>	<b>1 657 329</b>	<b>100</b>	<b>1 823 337</b>	<b>110</b>	<b>1 659 879</b>	<b>1 680 892</b>	<b>101</b>
<b>0 Food and live animals</b>	<b>312 835</b>	<b>324 209</b>	<b>104</b>	<b>351 857</b>	<b>109</b>	<b>319 431</b>	<b>325 194</b>	<b>102</b>
00 Live animals	16 174	21 784	135	25 509	117	23 098	22 328	97
01 Meat and meat preparations	76 611	76 026	99	74 023	97	65 308	74 026	113
02 Dairy products and eggs	38 414	40 768	106	46 664	114	43 429	45 288	104
03 Fish and preparations	9 116	9 606	105	10 585	110	9 564	10 195	107
04 Cereal and cereal products	50 465	46 581	92	57 092	123	52 841	52 753	100
05 Vegetables and fruit	37 741	33 799	90	38 681	114	35 761	34 365	96
06 Sugars, sugar preparations and honey	9 667	9 948	103	12 826	129	11 785	11 088	94
07 Coffee, tea, cocoa, spices and manufactures thereof	39 111	47 669	122	44 524	93	39 070	33 083	85
08 Feeding stuff for animals (not including unmilled cereals)	11 943	13 670	114	16 367	120	15 100	16 934	112
09 Miscellaneous edible products and preparations	23 594	24 357	103	25 586	105	23 475	25 133	107
<b>1 Beverages and tobacco</b>	<b>66 878</b>	<b>63 930</b>	<b>96</b>	<b>65 850</b>	<b>103</b>	<b>59 887</b>	<b>59 613</b>	<b>100</b>
11 Beverages	46 411	46 352	100	50 939	110	46 877	49 276	105
12 Tobacco and tobacco manufactures	20 467	17 578	86	14 910	85	13 009	10 336	79
<b>2 Crude materials, inedible, except fuels</b>	<b>37 842</b>	<b>70 243</b>	<b>186</b>	<b>84 420</b>	<b>120</b>	<b>77 111</b>	<b>56 223</b>	<b>73</b>
21 Hides, skins and fur skins, raw	37	86	232	0	0	0	1 760	
22 Oil-seeds and oleaginous fruits	519	810	156	603	74	560	328	59
23 Crude rubber	293	61	21	162	266	110	62	56
24 Cork and wood	5 780	7 337	127	6 497	89	6 110	5 297	87
25 Pulp and waste paper	7	6	86	8	127	8	15	197
26 Textile fibres and their wastes	626	430	69	508	118	478	658	138
27 Crude fertilizers, and crude minerals	3 917	3 398	87	3 320	98	2 882	2 229	77
28 Metalliferous ores and metal scrap	21 868	53 470	245	67 708	127	61 916	41 140	66
29 Crude animal and vegetable materials, n.e.s.	4 794	4 645	97	5 614	121	5 048	4 733	94
<b>3 Mineral fuels, lubricants and related materials</b>	<b>208 057</b>	<b>209 660</b>	<b>101</b>	<b>330 590</b>	<b>158</b>	<b>300 941</b>	<b>313 872</b>	<b>104</b>
32 Coal, coke and briquettes	526	333	63	419	126	392	369	94
33 Petroleum, petroleum products and related materials	130 964	166 165	127	207 229	125	191 401	199 272	104
34 Gas, natural and manufactured	8 418	12 890	153	13 987	109	12 476	12 239	98
35 Electric current	68 148	30 272	44	108 954	360	96 672	101 992	106
<b>4 Animal oils and fats</b>	<b>12 454</b>	<b>12 568</b>	<b>101</b>	<b>14 844</b>	<b>118</b>	<b>13 161</b>	<b>14 885</b>	<b>113</b>
41 Animal oils and fats	802	602	75	564	94	529	567	107
42 Fixed vegetable fats and oils	11 164	11 532	103	13 814	120	12 199	13 962	114
43 Animal or vegetable fats and oils, processed	488	434	89	465	107	433	356	82
<b>5 Chemicals</b>	<b>167 918</b>	<b>162 956</b>	<b>97</b>	<b>169 589</b>	<b>104</b>	<b>154 523</b>	<b>155 742</b>	<b>101</b>
51 Organic chemicals	2 511	2 030	81	2 167	107	2 100	2 080	99
52 Inorganic chemicals	7 771	4 917	63	4 935	100	4 482	4 176	93
53 Dyeing, tanning and colouring materials	21 153	19 629	93	20 577	105	19 324	17 896	93
54 Medicinal and pharmaceutical products	54 425	53 590	98	54 996	103	48 941	48 797	100
55 Essential oils, perfume materials, toilet prep.	38 510	40 169	104	43 561	108	39 660	40 575	102
56 Fertilizers (other than those of group 272)	1 775	2 131	120	2 504	118	2 400	2 441	102
57 Plastics in primary forms	2 449	2 455	100	2 585	105	2 414	2 554	106
58 Plastics in non-primary forms	23 477	21 295	91	20 704	97	18 983	21 732	114
59 Chemicals and products n.e.s.	15 846	16 740	106	17 560	105	16 218	15 490	96

/continue/

<b>BREAKDOWN BY SITC SECTIONS</b>	<b>2009</b>	<b>2010</b>	<b>Index 2010 2009</b>	<b>2011</b>	<b>Index 2011 2010</b>	<b>Jan-Nov 2011</b>	<b>Jan-Nov 2012</b>	<b>Index Jan-Nov 12 Jan-Nov 11</b>
<b>6 Manufactured goods classified chiefly by material</b>	<b>274 772</b>	<b>265 841</b>	<b>97</b>	<b>264 771</b>	<b>100</b>	<b>241 847</b>	<b>241 871</b>	<b>100</b>
61 Leather, leather manufactures and dressed fur skins	317	204	64	231	113	214	262	123
62 Rubber manufactures	11 266	14 777	131	15 396	104	13 564	17 795	131
63 Cork and wood manufactures	17 519	16 948	97	17 300	102	15 264	16 002	105
64 Paper, paperboard and articles of paper pulp	26 085	27 822	107	28 833	104	26 296	26 463	101
65 Textile yarn, fabrics, made-up articles and related products	11 331	12 660	112	12 333	97	11 124	12 529	113
66 Non-metallic mineral manufactures	87 197	77 953	89	72 952	94	66 971	65 565	98
67 Iron and steel	37 017	37 330	101	41 170	110	38 417	33 608	87
68 Non-ferrous metals	12 930	13 471	104	13 190	98	12 046	11 926	99
69 Manufactures of metals	71 110	64 676	91	63 366	98	57 951	57 721	100
<b>7 Machinery and transport equipment</b>	<b>357 735</b>	<b>340 607</b>	<b>95</b>	<b>315 905</b>	<b>93</b>	<b>284 032</b>	<b>305 125</b>	<b>107</b>
71 Power-generating machinery and equipment	12 968	7 842	60	5 486	70	4 901	7 480	153
72 Machinery specialized for particular industries	19 604	28 594	146	28 699	100	24 719	18 592	75
73 Metalworking machinery	2 403	2 152	90	3 293	153	2 989	1 813	61
74 General industrial machinery and equipment	58 484	56 990	97	50 092	88	45 840	47 505	104
75 Office machines and data-processing machines	22 011	24 729	112	21 821	88	19 559	19 681	101
76 Telecommunications and sound-recording and reproducing apparatus and equipment	38 125	35 489	93	38 118	107	33 882	30 897	91
77 Electrical machinery, apparatus and appliances	87 715	81 175	93	66 827	82	59 181	63 390	107
78 Road vehicles	88 583	94 456	107	95 478	101	87 073	90 019	103
79 Other transport equipment	27 841	9 179	33	6 089	66	5 889	25 748	437
<b>8 Miscellaneous manufactured articles</b>	<b>215 677</b>	<b>207 315</b>	<b>96</b>	<b>224 777</b>	<b>108</b>	<b>208 212</b>	<b>207 941</b>	<b>100</b>
81 Prefabricated buildings; sanitary equipment	12 204	11 831	97	10 939	92	9 888	11 108	112
82 Furniture, and parts thereof	44 209	41 379	94	42 448	103	38 939	37 741	97
83 Travel goods, handbags and similar containers	4 879	4 649	95	5 333	115	4 960	5 482	111
84 Articles of apparel and clothing accessories	43 219	42 745	99	46 507	109	43 782	46 136	105
85 Footwear	25 147	23 309	93	27 256	117	26 476	29 235	110
87 Professional, scientific and controlling instruments	16 943	13 656	81	16 430	120	14 534	17 516	121
88 Photographic apparatus, equipment and supplies and optical goods	3 910	3 699	95	4 815	130	4 301	4 111	96
89 Miscellaneous manufactured articles	65 166	66 046	101	71 049	108	65 332	56 612	87
<b>9 Commodities and transactions not classified elsewhere in the SITC</b>	<b>2</b>	<b>0</b>	<b>0</b>	<b>734</b>		<b>734</b>	<b>425</b>	<b>58</b>

## METHODOLOGICAL NOTES

External trade statistics represents an important source of primary importance for a number of institutions creating economy policy, as well as for decision making at the state and certain entities level. It serves as the basic source of information for estimation of balance of payments and national accounts of country, for preparation multilateral and bilateral negotiations, enterprises to explore market and to define their position in it.

Data collection on external trade is based on recommendations UN and EU statistics contained in the following publications:

- International merchandise Trade Statistics, Concept and Definitions, UN
- Statistics on the Trade of Goods, User Guide, EUROSTAT

It is harmonised with regulations of COMMUNITY LEGISLATION applicable to the STATISTICS RELATING TO THE TRADE OF GOODS, related to EXTRASTAT

- Council Regulation 1172/95
- Commission Regulation (EC) No. 1917/2000
- Regulation (EC) No. 471/2009 of the European Parliament and Council
- Commission Regulation (EC) No. 113/2010

### **Data source**

Data source for external trade of Montenegro is customs declarations on export and import of goods. Customs declaration is a document applied in customs procedure. It contains data important for the very customs procedure, but also for needs of statistics and other users. MONSTAT takes over the data in electronic form from Customs Administration of Montenegro with monthly periodicity, and further processes and publishes the results.

Since 2002 under customs procedure when using tariffs of products, Combined Nomenclature harmonised with EU Combined Nomenclature is used. It is published in the Official Gazette of Montenegro for the current year.

### **External trade coverage**

**Export** covers the goods leaving the statistical territory of Montenegro in accordance with the following customs procedures:

- a) Export
- b) Outward processing
- c) Re-export that was in the procedure of inward processing and manufacture of goods under customs control

**Import** covers all goods entering the statistical territory of Montenegro in accordance with the following customs procedures:

- a) Import for free trade
- b) Inward processing
- c) Manufacture of goods under customs control

Classification of export-import is performed in accordance with Nomenclature for External Trade Statistics which is based on Standard International Trade Classification (SITC), rev. 4. The code of every products classified by SITC has the following structure: first number means sector, second one – section, third – group, fourth – subgroup, and fifth number – position, i.e. product.

**Published by Statistical Office of Montenegro (MONSTAT)**  
81000 Podgorica, IV Proleterske 2, Phone: (+382) 20 230-811, Fax:(+382) 20 230-814

The release prepared by:

**Maja VUCINIC and Ivan LAKOVIC**

Phone: +382 20 230 805

e-mail: [contact@monstat.org](mailto:contact@monstat.org)