

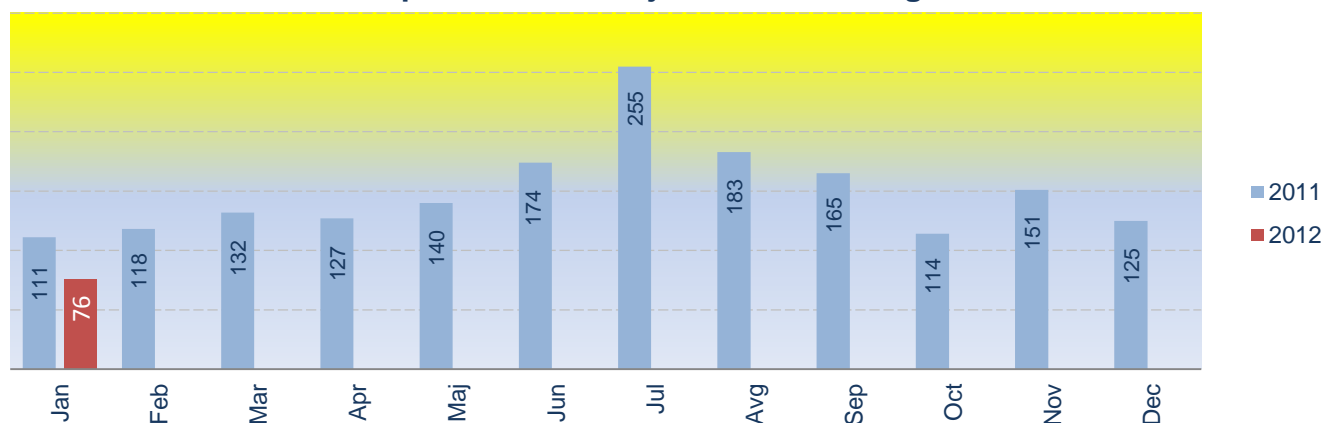
Number of injury accidents Montenegro January 2012

This release presents the data on number of injury accidents on roads, and number of casualty in Montenegro.

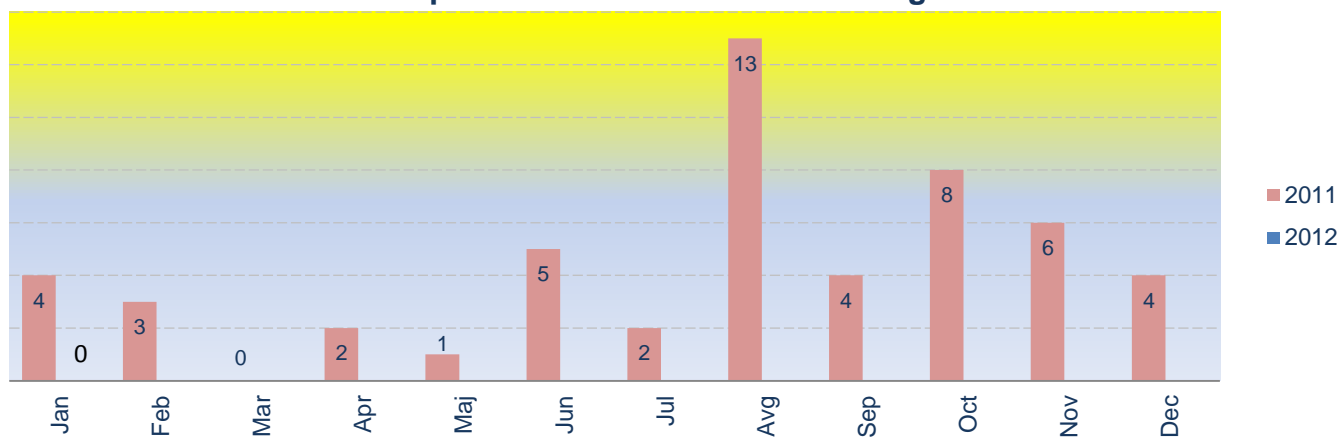
Number of injury accidents on roads in January 2012 totaled 512, down by 12.7% over the same month last year when the number of accidents was 580.

Number of casualty¹ in January 2012 amounted to 76 (of which 76 injuries), down by 33.9% over the same month last year when the number of persons killed was 115.

Graph 1. Persons injured in Montenegro



Graph 2. Persons killed in Montenegro



¹ Casualty is any person killed or injured as a result of an injury accident.

Table 1. Number of injury accidents by municipalities, January 2012

Municipality	Total	Without persons killed and persons injured	With persons injured		With persons killed	
			(2) = (2.1.) + (2.2.)		(3) = (3.1.) + (3.2.)	
			In settlement	Out of settlement	In settlement	Out of settlement
Σ	(1) + (2) + (3)	(1)	(2.1.)	(2.1.)	(3.1.)	(3.1.)
	512	456	44	12	0	0
Andrijevića	0	0	0	0	0	0
Bar	28	25	3	0	0	0
Berane	3	3	0	0	0	0
Bijelo Polje	13	11	2	0	0	0
Budva	21	17	2	2	0	0
Cetinje	0	0	0	0	0	0
Danilovgrad	8	6	1	1	0	0
Herceg Novi	36	32	4	0	0	0
Kolašin	7	7	0	0	0	0
Kotor	34	30	2	2	0	0
Mojkovac	3	3	0	0	0	0
Nikšić	70	61	8	1	0	0
Plav	0	0	0	0	0	0
Pljevlja	7	7	0	0	0	0
Pluzine	1	1	0	0	0	0
Podgorica	242	219	19	4	0	0
Rožaje	5	5	0	0	0	0
Šavnik	1	1	0	0	0	0
Tivat	23	21	2	0	0	0
Ulcinj	8	6	1	1	0	0
Žabljak	2	1	0	1	0	0

Graph 3. Total number of injury accident by municipalities, January 2012

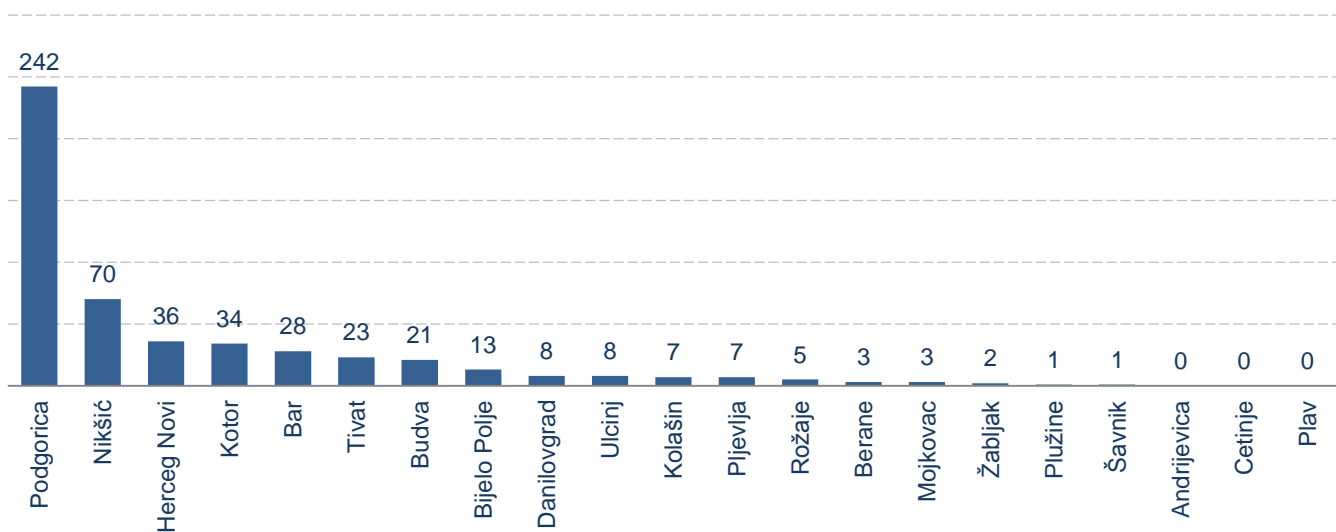


Table 2. Number of persons killed and persons injured by municipalities, January 2012

Municipality	Total persons killed and persons injured	With persons injured		With persons killed	
		(1) = (1.1.) + (1.2.)		(2) = (2.1.) + (2.2.)	
		In settlement	Out of settlement	In settlement	Out of settlement
Σ	(1) + (2)	(1.1.)	(1.2.)	(2.1.)	(2.2.)
	76	59	17	0	0
Andrijevica	0	0	0	0	0
Bar	5	5	0	0	0
Berane	0	0	0	0	0
Bijelo Polje	2	2	0	0	0
Budva	4	2	2	0	0
Cetinje	0	0	0	0	0
Danilovgrad	2	1	1	0	0
Herceg Novi	7	7	0	0	0
Kolašin	0	0	0	0	0
Kotor	4	2	2	0	0
Mojkovac	0	0	0	0	0
Nikšić	14	13	1	0	0
Plav	0	0	0	0	0
Pljevlja	0	0	0	0	0
Plužine	0	0	0	0	0
Podgorica	33	24	9	0	0
Rožaje	0	0	0	0	0
Šavnik	0	0	0	0	0
Tivat	2	2	0	0	0
Ulcinj	2	1	1	0	0
Žabljak	1	0	1	0	0

Graph 4. Total number of persons killed and persons injured by municipalities, January 2012

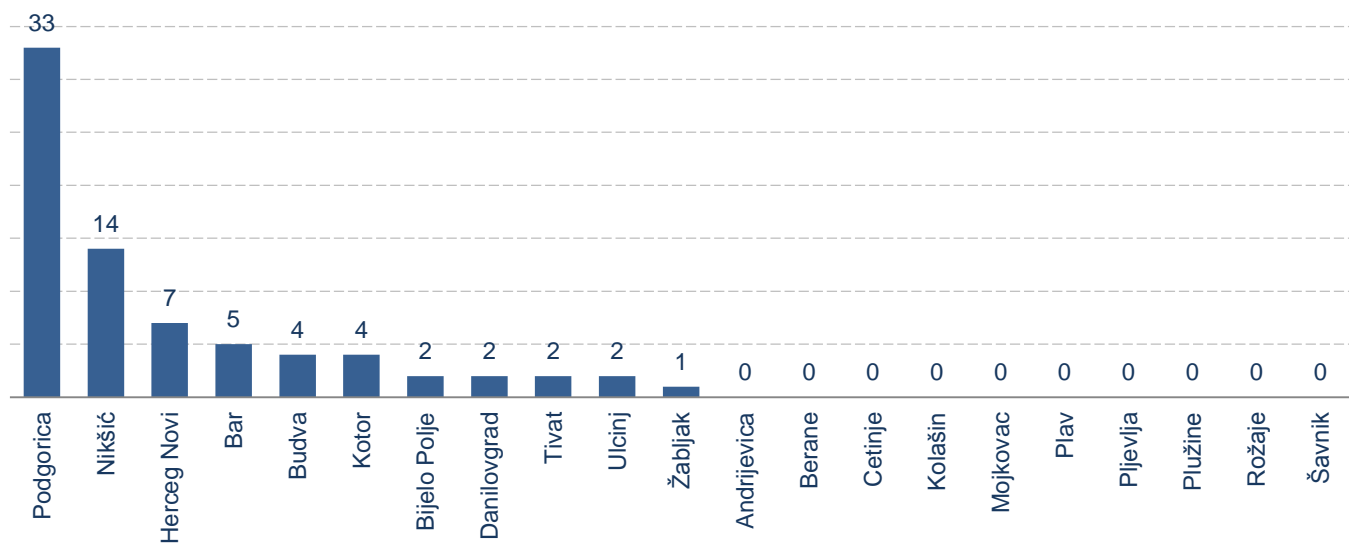


Table 3. Number of injury accidents and accident indices in Montenegro

Month	Total number of injury accidents in Montenegro	Indices		
		2010=100	m/m-1	m/m-12
Jan-12	512	67.2	77.1	88.3
2011	8 368			
Dec-11	664	87.2	99.0	
Nov-11	671	88.1	93.7	
Okt-11	716	94.0	103.0	
Sep-11	695	91.3	73.6	
Avg-11	944	124.0	98.0	
Jul-11	963	126.5	134.5	
Jun-11	716	94.0	121.6	
Maj-11	589	77.3	95.5	
Apr-11	617	81.0	98.2	
Mart-11	628	82.5	107.4	
Feb-11	585	76.8	100.9	
Jan-11	580	76.2		
2010	9 138			

Table 4. Number of persons killed and persons injured and indices of persons killed and persons injured in Montenegro

Month	Total number of casualty in Montenegro	Indices		
		2010=100	m/m-1	m/m-12
Jan-12	76	41.6	58.9	66.1
2011	1 846			
Dec-11	129	70.6	82.2	
Nov-11	157	85.9	128.7	
Okt-11	122	66.7	72.2	
Sep-11	169	92.4	86.7	
Avg-11	195	106.7	75.9	
Jul-11	257	140.6	143.6	
Jun-11	179	97.9	127.0	
Maj-11	141	77.1	109.3	
Apr-11	129	70.6	97.7	
Mart-11	132	72.2	109.1	
Feb-11	121	66.2	105.2	
Jan-11	115	62.9		
2010	2 194			

Table 5. Relation between total number of persons killed and persons injured and total number of road accidents, by municipalities

Month/ Municipality	Jan-12	Dec-11	Nov-11	Oct-11	Sep-11	Aug-11	Jul-11	Jun-11	May-11	Apr-11	Mar-11	Feb-11	Jan-11
Andrijevica	0.00	0.00	0.00	1.00	0.00	1.00	1.00	0.00	1.00	0.00	0.00	0.00	0.67
Bar	0.18	0.35	0.41	0.27	0.63	0.26	0.27	0.33	0.62	0.33	0.27	0.49	0.28
Berane	0.00	0.38	0.36	0.25	0.33	0.33	0.33	0.13	0.00	0.14	0.67	0.00	0.62
Bijelo Polje	0.15	0.44	0.36	0.45	0.45	0.50	0.53	0.44	0.25	0.40	0.40	0.68	0.45
Budva	0.19	0.16	0.28	0.13	0.15	0.11	0.09	0.12	0.15	0.21	0.19	0.19	0.18
Cetinje	0.00	0.00	0.00	0.00	0.00	0.00	0.00	0.17	0.00	0.00	0.00	0.00	0.24
Danilovgrad	0.25	0.14	0.17	0.44	0.39	0.54	0.67	0.36	0.00	0.54	0.47	0.20	0.46
Herceg Novi	0.19	0.11	0.13	0.16	0.05	0.05	0.17	0.16	0.29	0.22	0.20	0.23	0.35
Kolasin	0.00	0.54	0.79	0.14	0.82	0.32	0.48	1.15	0.56	0.25	0.15	0.20	1.00
Kotor	0.12	0.06	0.00	0.14	0.15	0.09	0.11	0.08	0.50	0.03	0.06	0.10	0.17
Mojkovac	0.00	0.00	0.50	0.50	0.40	0.56	0.80	0.33	0.83	1.00	0.50	0.00	0.00
Niksic	0.20	0.20	0.26	0.19	0.24	0.31	0.40	0.24	0.22	0.33	0.12	0.14	0.03
Plav	0.00	0.00	0.00	1.00	0.00	0.00	0.60	1.00	0.00	0.00	0.00	0.50	0.00
Pljevlja	0.00	0.25	0.50	0.50	0.50	0.38	0.20	0.71	2.00	0.25	0.17	0.29	0.33
Pluzine	0.00	0.00	0.00	1.50	0.00	0.00	0.00	0.50	0.00	0.50	0.00	1.00	0.00
Podgorica	0.14	0.15	0.18	0.11	0.19	0.22	0.25	0.20	0.15	0.15	0.21	0.16	0.16
Rozaje	0.00	0.75	0.40	0.00	0.56	0.00	0.31	0.56	0.25	0.43	0.20	0.44	0.00
Savnik	0.00	0.00	0.50	0.33	0.67	0.20	0.33	1.00	0.00	1.00	0.00	0.00	0.00
Tivat	0.09	0.11	0.08	0.00	0.00	0.00	0.00	0.00	0.00	0.00	0.00	0.00	0.00
Ulcinj	0.25	0.40	0.83	0.43	0.25	0.20	0.53	0.50	0.82	0.39	0.69	0.38	0.44
Zabljak	0.50	2.00	0.00	0.00	0.00	0.00	0.60	0.33	1.00	0.00	0.00	0.00	2.00

METHODOLOGICAL NOTES

Data source

The data on number of injury accidents on roads in Montenegro are the result of regular monthly surveys from reporting unit – Montenegro Police Administration as an institution engaged in monitoring and keeping records on accidents.

Coverage

Observation unit is accident and persons injured and killed in this accident with reference to space and time the accident occurred, type of accident, and by age structure of persons injured and killed.

Definitions

Road accident is any accident involving at least one road vehicle in motion on a public road or private road to which the public has right of access, resulting in at least one injured or killed person.

Fatal accident is any injury accident resulting in a person killed.

Non-fatal accident is any accident resulting in a person injured other than a fatal accident.

Person killed is any person killed or injured as a result of an injury accident. Any person killed immediately or dying within 30 days as a result of an injury accident.

Person injured any person not killed, but who sustained an injury as result of an injury accident, normally needing medical treatment.

According to position in space and traffic conditions, public roads are divided as the following:

1. *Public roads in settlement (built-up area)* – is the part of public road within boundaries of settlement whose characteristics are defined by space, i.e. urbanistic plan for municipality, i.e. city. On public roads in settlement, the limited speed drive for vehicles is 50 km/h or in compliance with traffic sign.
2. *Public roads out of settlement (built-up area)* – is a part of public road out of settlement boundaries. The limited speed drive for vehicle on public roads out of settlement is defined by traffic sign, i.e. in motor-way up to 120 km/h, and in other roads up to 80 km/h.

Published and printed by Statistical Office of Montenegro (MONSTAT)
20000 Podgorica, IV Proleterske 2, Phone (+382) 20 230-811, Fax (+382) 20 230-814

Release prepared by:

Jelena POPOVIC and Mia RADUNOVIC
Phone +382-20-231-004;
contact@monstat.org