

When using the data,
 please name the source.

Number of injury accidents Montenegro February 2012

This release presents the data on number of injury accidents on roads, and number of casualty in Montenegro.

Number of injury accidents on roads in February 2012 totaled 566, down by 3.2% over the same month last year when the number of accidents was 585.

Number of casualty¹ in February 2012 amounted to 50 (of which 47 injuries), down by 58.7% over the same month last year when the number of persons killed was 121.

Chart 1. Persons injured in Montenegro

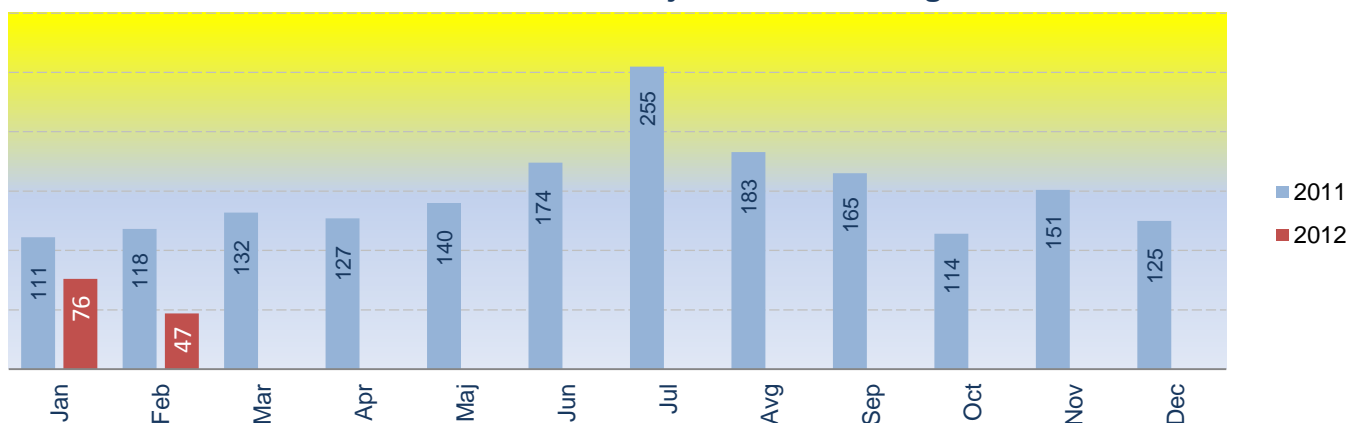
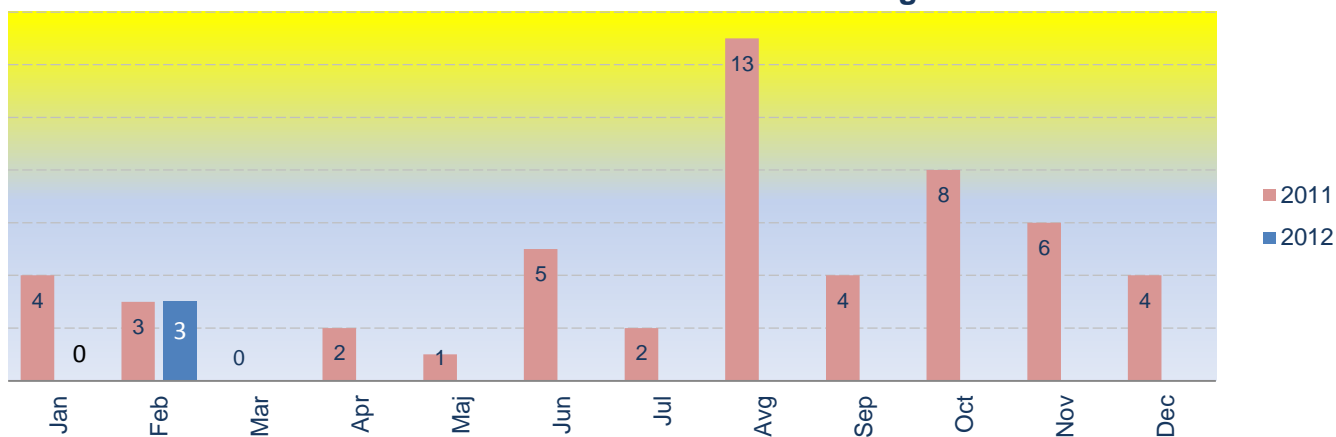


Chart 2. Persons killed in Montenegro

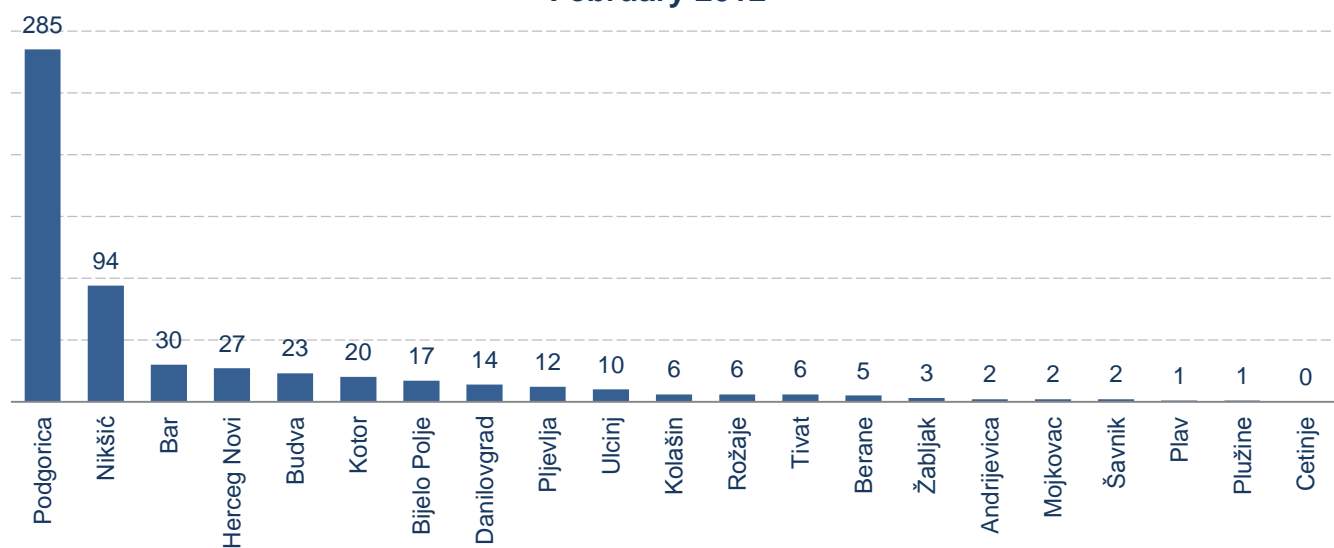


¹ Casualty is any person killed or injured as a result of an injury accident.

**Table 1. Number of injury accidents by municipalities
February 2012**

Municipality	Total	Without persons killed and persons injured	With persons injured		With persons killed	
			(2) = (2.1.) + (2.2.)		(3) = (3.1.) + (3.2.)	
			In settlement	Out of settlement	In settlement	Out of settlement
	(1) + (2) + (3)	(1)	(2.1.)	(2.1.)	(3.1.)	(3.1.)
Ukupno	566	524	27	12	3	0
Andrijevica	2	1	1	0	0	0
Bar	30	27	3	0	0	0
Berane	5	5	0	0	0	0
Bijelo Polje	17	16	1	0	0	0
Budva	23	20	1	1	1	0
Cetinje	0	0	0	0	0	0
Danilovgrad	14	12	1	1	0	0
Herceg Novi	27	26	0	0	1	0
Kolašin	6	6	0	0	0	0
Kotor	20	16	4	0	0	0
Mojkovac	2	0	0	1	1	0
Nikšić	94	88	4	2	0	0
Plav	1	1	0	0	0	0
Pljevlja	12	12	0	0	0	0
Pluzine	1	1	0	0	0	0
Podgorica	285	266	12	7	0	0
Rožaje	6	6	0	0	0	0
Šavnik	2	2	0	0	0	0
Tivat	6	6	0	0	0	0
Ulcinj	10	10	0	0	0	0
Žabljak	3	3	0	0	0	0

**Chart 3. Total number of injury accident by municipalities
February 2012**



**Table 2. Number of persons killed and persons injured by municipalities
February 2012**

Municipality	Total persons killed and persons injured	With persons injured		With persons killed	
		(1) = (1.1.) + (1.2.)		(2) = (2.1.) + (2.2.)	
		In settlement	Out of settlement	In settlement	Out of settlement
	(1) + (2)	(1.1.)	(1.2.)	(2.1.)	(2.2.)
Ukupno	50	35	12	3	0
Andrijevica	2	2	0	0	0
Bar	3	3	0	0	0
Berane	0	0	0	0	0
Bijelo Polje	1	1	0	0	0
Budva	3	1	1	1	0
Cetinje	0	0	0	0	0
Danilovgrad	3	2	1	0	0
Herceg Novi	4	3	0	1	0
Kolašin	0	0	0	0	0
Kotor	5	5	0	0	0
Mojkovac	2	0	1	1	0
Nikšić	7	5	2	0	0
Plav	0	0	0	0	0
Pljevlja	0	0	0	0	0
Plužine	0	0	0	0	0
Podgorica	20	13	7	0	0
Rožaje	0	0	0	0	0
Šavnik	0	0	0	0	0
Tivat	0	0	0	0	0
Ulcinj	0	0	0	0	0
Žabljak	0	0	0	0	0

**Chart 4. Total number of persons killed and persons injured by municipalities
February 2012**

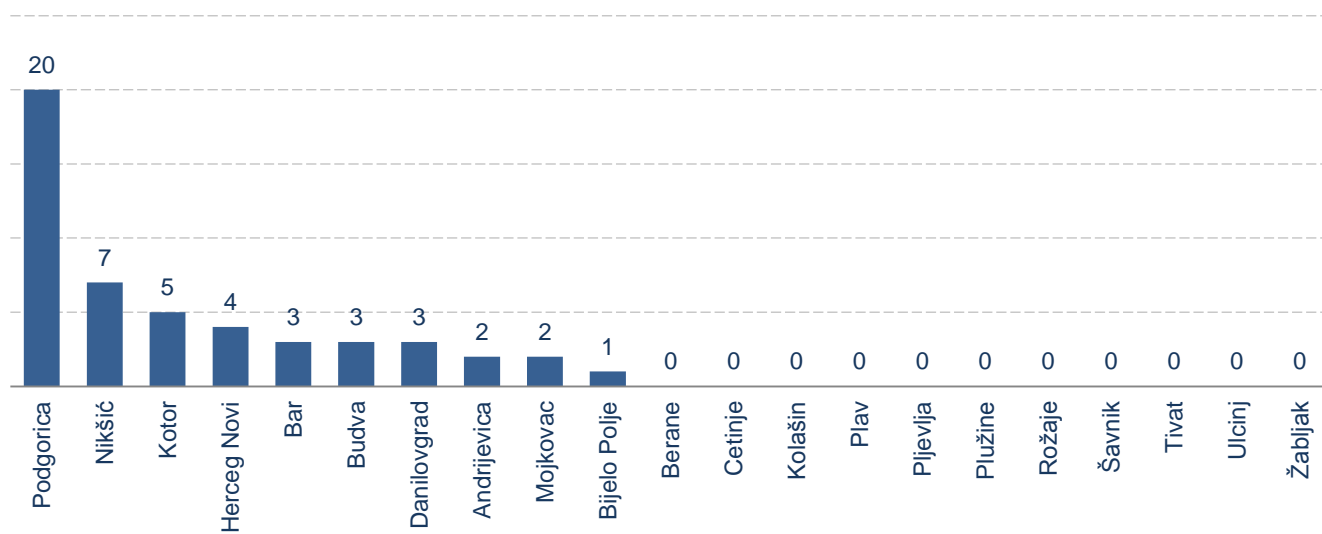


Table 3. Number of injury accidents and accident indices in Montenegro

Month	Total number of injury accidents in Montenegro	Indices		
		2010=100	Monthly indices	Annual indices
2012				
Jan	512	67.2	77.1	88.3
Feb	566	74.3	110.5	96.8
2011	8 368	91.6		
Jan	580	76.2		
Feb	585	76.8	100.9	
Mar	628	82.5	107.4	
Apr	617	81.0	98.2	
May	589	77.3	95.5	
Jun	716	94.0	121.6	
Jul	963	126.5	134.5	
Aug	944	124.0	98.0	
Sep	695	91.3	73.6	
Oct	716	94.0	103.0	
Nov	671	88.1	93.7	
Dec	664	87.2	99.0	
2010	9 138	100.0		

Table 4. Number of persons killed and persons injured and indices of persons killed and persons injured in Montenegro

Month	Total number of casualty in Montenegro	Indices		
		2010=100	Monthly indices	Annual indices
2012				
Jan	76	41.6	58.9	66.1
Feb	50	27.3	65.8	41.3
2011	1 846	84.1		
Jan	115	62.9		
Feb	121	66.2	105.2	
Mar	132	72.2	109.1	
Apr	129	70.6	97.7	
May	141	77.1	109.3	
Jun	179	97.9	127.0	
Jul	257	140.6	143.6	
Aug	195	106.7	75.9	
Sep	169	92.4	86.7	
Oct	122	66.7	72.2	
Nov	157	85.9	128.7	
Dec	129	70.6	82.2	
2010	2 194	100.0		

Table 5. Relation between total number of persons killed and persons injured and total number of road accidents, by municipalities

Month/ Municipality	Feb 12	Jan 12	Dec 11	Nov 11	Oct 11	Sep 11	Aug 11	Jul 11	Jun 11	May 11	Apr 11	Mar 11	Feb 11	Jan 11
Andrijevica	1.00	0.00	0.00	0.00	1.00	0.00	1.00	1.00	0.00	1.00	0.00	0.00	0.00	0.67
Bar	0.10	0.18	0.35	0.41	0.27	0.63	0.26	0.27	0.33	0.62	0.33	0.27	0.49	0.28
Berane	0.00	0.00	0.38	0.36	0.25	0.33	0.33	0.33	0.13	0.00	0.14	0.67	0.00	0.62
Bijelo Polje	0.06	0.15	0.44	0.36	0.45	0.45	0.50	0.53	0.44	0.25	0.40	0.40	0.68	0.45
Budva	0.13	0.19	0.16	0.28	0.13	0.15	0.11	0.09	0.12	0.15	0.21	0.19	0.19	0.18
Cetinje	0.00	0.00	0.00	0.00	0.00	0.00	0.00	0.00	0.17	0.00	0.00	0.00	0.00	0.24
Danilovgrad	0.21	0.25	0.14	0.17	0.44	0.39	0.54	0.67	0.36	0.00	0.54	0.47	0.20	0.46
Herceg Novi	0.15	0.19	0.11	0.13	0.16	0.05	0.05	0.17	0.16	0.29	0.22	0.20	0.23	0.35
Kolasin	0.00	0.00	0.54	0.79	0.14	0.82	0.32	0.48	1.15	0.56	0.25	0.15	0.20	1.00
Kotor	0.25	0.12	0.06	0.00	0.14	0.15	0.09	0.11	0.08	0.50	0.03	0.06	0.10	0.17
Mojkovac	1.00	0.00	0.00	0.50	0.50	0.40	0.56	0.80	0.33	0.83	1.00	0.50	0.00	0.00
Niksic	0.07	0.20	0.20	0.26	0.19	0.24	0.31	0.40	0.24	0.22	0.33	0.12	0.14	0.03
Plav	0.00	0.00	0.00	0.00	1.00	0.00	0.00	0.60	1.00	0.00	0.00	0.00	0.50	0.00
Pljevlja	0.00	0.00	0.25	0.50	0.50	0.50	0.38	0.20	0.71	2.00	0.25	0.17	0.29	0.33
Pluzine	0.00	0.00	0.00	0.00	1.50	0.00	0.00	0.00	0.50	0.00	0.50	0.00	1.00	0.00
Podgorica	0.07	0.14	0.15	0.18	0.11	0.19	0.22	0.25	0.20	0.15	0.15	0.21	0.16	0.16
Rozaje	0.00	0.00	0.75	0.40	0.00	0.56	0.00	0.31	0.56	0.25	0.43	0.20	0.44	0.00
Savnik	0.00	0.00	0.00	0.50	0.33	0.67	0.20	0.33	1.00	0.00	1.00	0.00	0.00	0.00
Tivat	0.00	0.09	0.11	0.08	0.00	0.00	0.00	0.00	0.00	0.00	0.00	0.00	0.00	0.00
Ulcinj	0.00	0.25	0.40	0.83	0.43	0.25	0.20	0.53	0.50	0.82	0.39	0.69	0.38	0.44
Zabljak	0.00	0.50	2.00	0.00	0.00	0.00	0.00	0.60	0.33	1.00	0.00	0.00	0.00	2.00

METHODOLOGICAL NOTES

Data source

The data on number of injury accidents on roads in Montenegro are the result of regular monthly surveys from reporting unit – Montenegro Police Administration as an institution engaged in monitoring and keeping records on accidents.

Coverage

Observation unit is accident and persons injured and killed in this accident with reference to space and time the accident occurred, type of accident, and by age structure of persons injured and killed.

Definitions

Road accident is any accident involving at least one road vehicle in motion on a public road or private road to which the public has right of access, resulting in at least one injured or killed person.

Fatal accident is any injury accident resulting in a person killed.

Non-fatal accident is any accident resulting in a person injured other than a fatal accident.

Person killed is any person killed or injured as a result of an injury accident. Any person killed immediately or dying within 30 days as a result of an injury accident.

Person injured any person not killed, but who sustained an injury as result of an injury accident, normally needing medical treatment.

According to position in space and traffic conditions, public roads are divided as the following:

1. *Public roads in settlement (built-up area)* – is the part of public road within boundaries of settlement whose characteristics are defined by space, i.e. urbanistic plan for municipality, i.e. city. On public roads in settlement, the limited speed drive for vehicles is 50 km/h or in compliance with traffic sign.
2. *Public roads out of settlement (built-up area)* – is a part of public road out of settlement boundaries. The limited speed drive for vehicle on public roads out of settlement is defined by traffic sign, i.e. in motor-way up to 120 km/h, and in other roads up to 80 km/h.

Published and printed by Statistical Office of Montenegro (MONSTAT)
20000 Podgorica, IV Proleterske 2, Phone (+382) 20 230-811, Fax (+382) 20 230-814

Release prepared by:

Jelena POPOVIC and Mia RADUNOVIC
Phone +382-20-231-004;
contact@monstat.org