

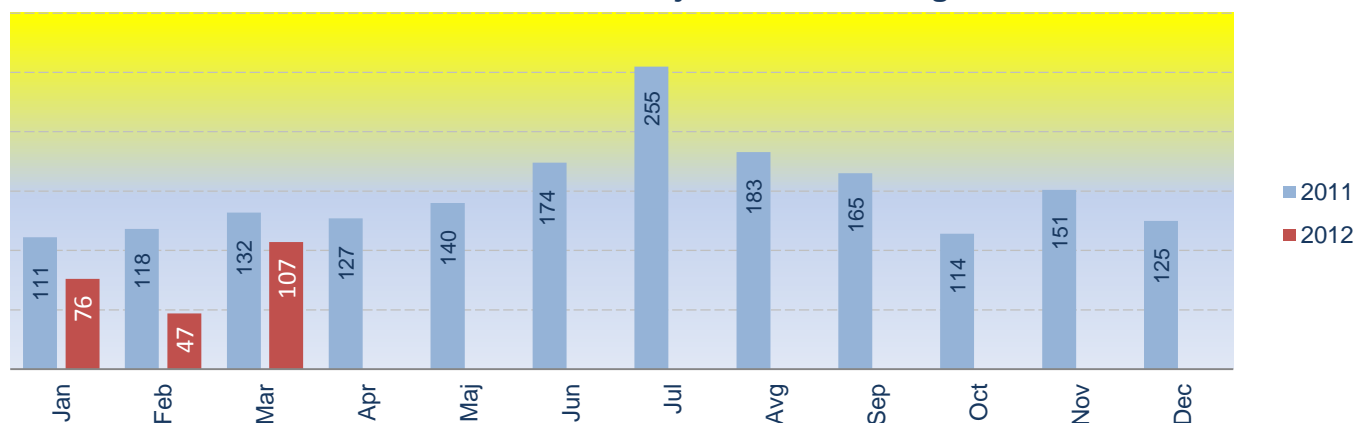
## Number of injury accidents Montenegro March 2012

*This release presents the data on number of injury accidents on roads, and number of casualty in Montenegro.*

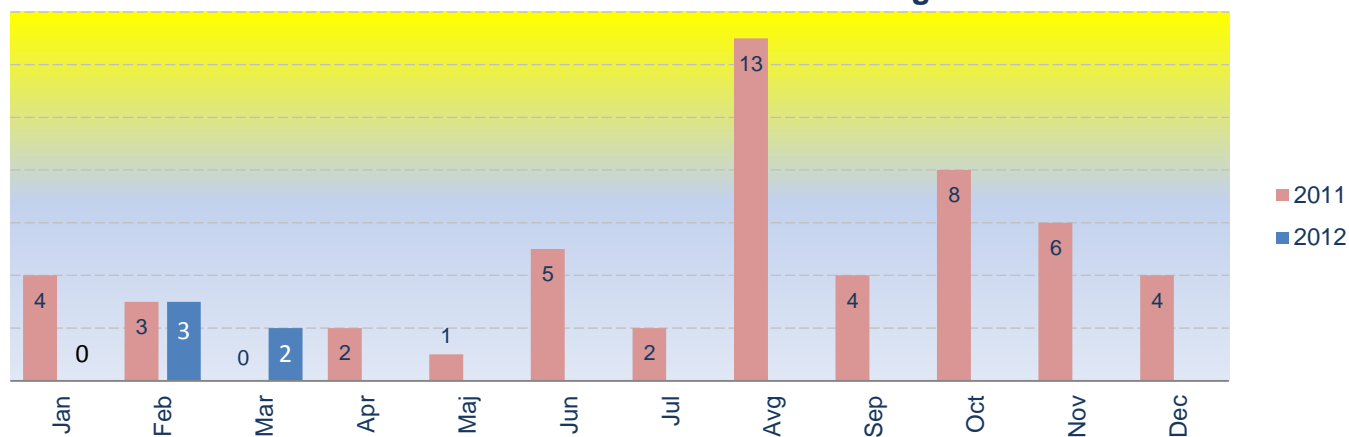
*Number of injury accidents on roads in March 2012 totaled 529, down by 15.8% over the same month last year when the number of accidents was 628.*

*Number of casualty<sup>1</sup> in March 2012 amounted to 109 (of which 107 injuries), down by 17.4% over the same month last year when the number of persons killed was 132.*

**Chart 1. Persons injured in Montenegro**



**Chart 2. Persons killed in Montenegro**

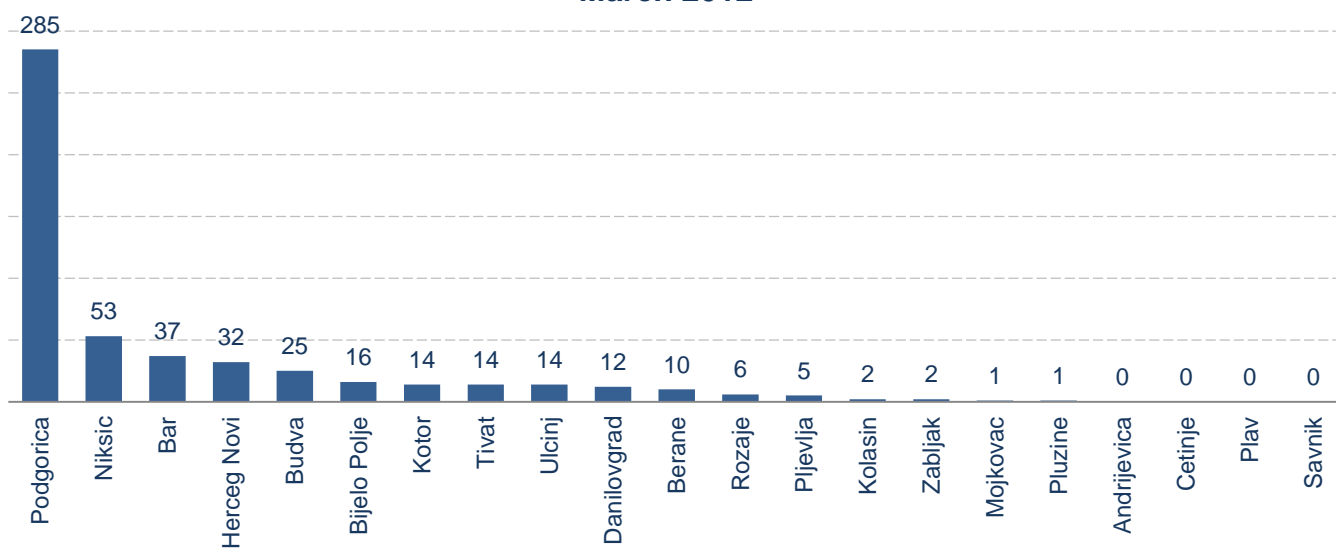


<sup>1</sup> Casualty is any person killed or injured as a result of an injury accident.

**Table 1. Number of injury accidents by municipalities  
March 2012**

Municipality	Total	Without persons killed and persons injured	With persons injured		With persons killed	
			(2) = (2.1.) + (2.2.)		(3) = (3.1.) + (3.2.)	
			In settlement	Out of settlement	In settlement	Out of settlement
	(1) + (2) + (3)	(1)	(2.1.)	(2.1.)	(3.1.)	(3.1.)
<b>Sum</b>	<b>529</b>	<b>447</b>	<b>59</b>	<b>21</b>	<b>0</b>	<b>2</b>
Andrijevisa	0	0	0	0	0	0
Bar	37	27	10	0	0	0
Berane	10	10	0	0	0	0
Bijelo Polje	16	9	6	1	0	0
Budva	25	20	0	5	0	0
Cetinje	0	0	0	0	0	0
Danilovgrad	12	9	1	1	0	1
Herceg Novi	32	30	2	0	0	0
Kolasin	2	2	0	0	0	0
Kotor	14	11	3	0	0	0
Mojkovac	1	1	0	0	0	0
Niksic	53	43	8	2	0	0
Plav	0	0	0	0	0	0
Pljevlja	5	2	1	2	0	0
Pluzine	1	1	0	0	0	0
Podgorica	285	255	25	5	0	0
Rozaje	6	2	1	2	0	1
Savnik	0	0	0	0	0	0
Tivat	14	13	1	0	0	0
Ulcinj	14	10	1	3	0	0
Zabljak	2	2	0	0	0	0

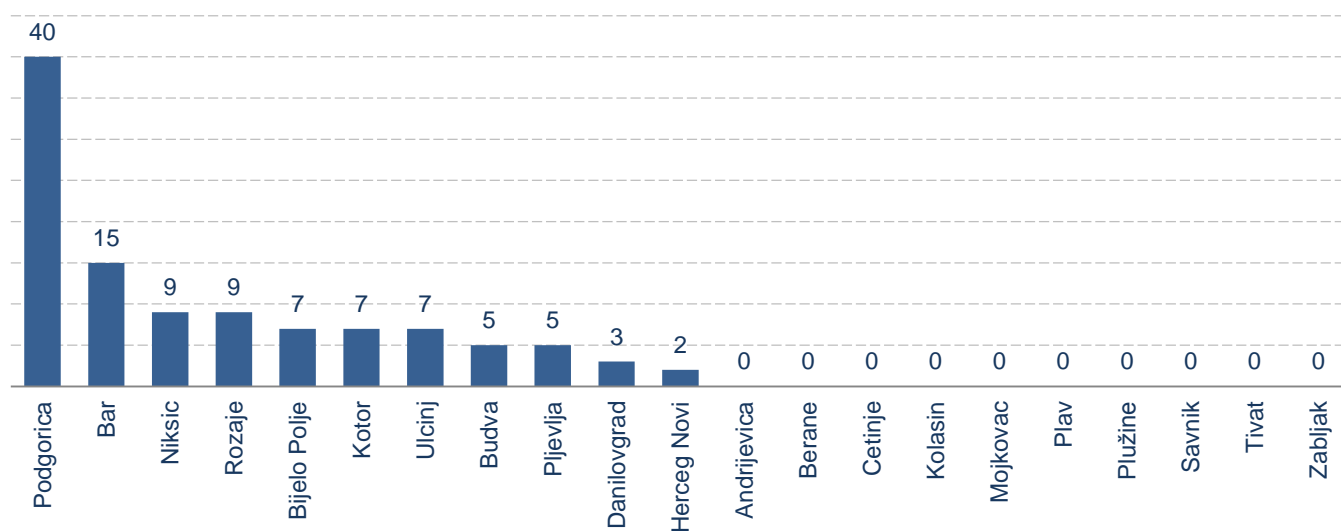
**Chart 3. Total number of injury accident by municipalities  
March 2012**



**Table 2. Number of persons killed and persons injured by municipalities  
March 2012**

Municipality	Total persons killed and persons injured	With persons injured		With persons killed	
		(1) = (1.1.) + (1.2.)		(2) = (2.1.) + (2.2.)	
		In settlement	Out of settlement	In settlement	Out of settlement
	(1) + (2)	(1.1.)	(1.2.)	(2.1.)	(2.2.)
<b>Sum</b>	<b>109</b>	<b>73</b>	<b>34</b>	<b>0</b>	<b>2</b>
Andrijevica	0	0	0	0	0
Bar	15	15	0	0	0
Berane	0	0	0	0	0
Bijelo Polje	7	6	1	0	0
Budva	5	0	5	0	0
Cetinje	0	0	0	0	0
Danilovgrad	3	1	1	0	1
Herceg Novi	2	2	0	0	0
Kolašin	0	0	0	0	0
Kotor	7	7	0	0	0
Mojkovac	0	0	0	0	0
Nikšić	9	6	3	0	0
Plav	0	0	0	0	0
Pljevlja	5	2	3	0	0
Plužine	0	0	0	0	0
Podgorica	40	31	9	0	0
Rožaje	9	2	6	0	1
Šavnik	0	0	0	0	0
Tivat	0	0	0	0	0
Ulcinj	7	1	6	0	0
Žabljak	0	0	0	0	0

**Chart 4. Total number of persons killed and persons injured by municipalities  
March 2012**



**Table 3. Number of injury accidents and accident indices in Montenegro**

Month	Total number of injury accidents in Montenegro	Indices		
		2010=100	Monthly indices	Annual indices
<b>2012</b>				
Jan	512	67.2	77.1	88.3
Feb	566	74.3	110.5	96.8
Mar	529	69.5	93.5	84.2
<b>2011</b>	<b>8 368</b>	<b>91.6</b>		
Jan	580	76.2		
Feb	585	76.8	100.9	
Mar	628	82.5	107.4	
Apr	617	81.0	98.2	
May	589	77.3	95.5	
Jun	716	94.0	121.6	
Jul	963	126.5	134.5	
Aug	944	124.0	98.0	
Sep	695	91.3	73.6	
Oct	716	94.0	103.0	
Nov	671	88.1	93.7	
Dec	664	87.2	99.0	
<b>2010</b>	<b>9 138</b>	<b>100.0</b>		

**Table 4. Number of persons killed and persons injured and indices of persons killed and persons injured in Montenegro**

Month	Total number of casualty in Montenegro	Indices		
		2010=100	Monthly indices	Annual indices
<b>2012</b>				
Jan	76	41.6	58.9	66.1
Feb	50	27.3	65.8	41.3
Mar	109	59.6	218.0	82.6
<b>2011</b>	<b>1 846</b>	<b>84.1</b>		
Jan	115	62.9		
Feb	121	66.2	105.2	
Mar	132	72.2	109.1	
Apr	129	70.6	97.7	
May	141	77.1	109.3	
Jun	179	97.9	127.0	
Jul	257	140.6	143.6	
Aug	195	106.7	75.9	
Sep	169	92.4	86.7	
Oct	122	66.7	72.2	
Nov	157	85.9	128.7	
Dec	129	70.6	82.2	
<b>2010</b>	<b>2 194</b>	<b>100.0</b>		

**Table 5. Relation between total number of persons killed and persons injured and total number of road accidents, by municipalities**

Month/ Municipality	Mar 12	Feb 12	Jan 12	Dec 11	Nov 11	Oct 11	Sep 11	Aug 11	Jul 11	Jun 11	May 11	Apr 11	Mar 11	Feb 11	Jan 11
Andrijevica	0.00	1.00	0.00	0.00	0.00	1.00	0.00	1.00	1.00	0.00	1.00	0.00	0.00	0.00	0.67
Bar	0.41	0.10	0.18	0.35	0.41	0.27	0.63	0.26	0.27	0.33	0.62	0.33	0.27	0.49	0.28
Berane	0.00	0.00	0.00	0.38	0.36	0.25	0.33	0.33	0.33	0.13	0.00	0.14	0.67	0.00	0.62
Bijelo Polje	0.44	0.06	0.15	0.44	0.36	0.45	0.45	0.50	0.53	0.44	0.25	0.40	0.40	0.68	0.45
Budva	0.20	0.13	0.19	0.16	0.28	0.13	0.15	0.11	0.09	0.12	0.15	0.21	0.19	0.19	0.18
Cetinje	0.00	0.00	0.00	0.00	0.00	0.00	0.00	0.00	0.00	0.17	0.00	0.00	0.00	0.00	0.24
Danilovgrad	0.25	0.21	0.25	0.14	0.17	0.44	0.39	0.54	0.67	0.36	0.00	0.54	0.47	0.20	0.46
Herceg Novi	0.06	0.15	0.19	0.11	0.13	0.16	0.05	0.05	0.17	0.16	0.29	0.22	0.20	0.23	0.35
Kolasin	0.00	0.00	0.00	0.54	0.79	0.14	0.82	0.32	0.48	1.15	0.56	0.25	0.15	0.20	1.00
Kotor	0.50	0.25	0.12	0.06	0.00	0.14	0.15	0.09	0.11	0.08	0.50	0.03	0.06	0.10	0.17
Mojkovac	0.00	1.00	0.00	0.00	0.50	0.50	0.40	0.56	0.80	0.33	0.83	1.00	0.50	0.00	0.00
Niksic	0.17	0.07	0.20	0.20	0.26	0.19	0.24	0.31	0.40	0.24	0.22	0.33	0.12	0.14	0.03
Plav	0.00	0.00	0.00	0.00	0.00	1.00	0.00	0.00	0.60	1.00	0.00	0.00	0.00	0.50	0.00
Pljevlja	1.00	0.00	0.00	0.25	0.50	0.50	0.50	0.38	0.20	0.71	2.00	0.25	0.17	0.29	0.33
Pluzine	0.00	0.00	0.00	0.00	0.00	1.50	0.00	0.00	0.00	0.50	0.00	0.50	0.00	1.00	0.00
Podgorica	0.14	0.07	0.14	0.15	0.18	0.11	0.19	0.22	0.25	0.20	0.15	0.15	0.21	0.16	0.16
Rozaje	1.50	0.00	0.00	0.75	0.40	0.00	0.56	0.00	0.31	0.56	0.25	0.43	0.20	0.44	0.00
Savnik	0.00	0.00	0.00	0.00	0.50	0.33	0.67	0.20	0.33	1.00	0.00	1.00	0.00	0.00	0.00
Tivat	0.00	0.00	0.09	0.11	0.08	0.00	0.00	0.00	0.00	0.00	0.00	0.00	0.00	0.00	0.00
Ulcinj	0.50	0.00	0.25	0.40	0.83	0.43	0.25	0.20	0.53	0.50	0.82	0.39	0.69	0.38	0.44
Zabljak	0.00	0.00	0.50	2.00	0.00	0.00	0.00	0.00	0.60	0.33	1.00	0.00	0.00	0.00	2.00

## METHODOLOGICAL NOTES

### Data source

The data on number of injury accidents on roads in Montenegro are the result of regular monthly surveys from reporting unit – Montenegro Police Administration as an institution engaged in monitoring and keeping records on accidents.

### Coverage

Observation unit is accident and persons injured and killed in this accident with reference to space and time the accident occurred, type of accident, and by age structure of persons injured and killed.

### Definitions

*Road accident* is any accident involving at least one road vehicle in motion on a public road or private road to which the public has right of access, resulting in at least one injured or killed person.

*Fatal accident* is any injury accident resulting in a person killed.

*Non-fatal accident* is any accident resulting in a person injured other than a fatal accident.

*Person killed* is any person killed or injured as a result of an injury accident. Any person killed immediately or dying within 30 days as a result of an injury accident.

*Person injured* any person not killed, but who sustained an injury as result of an injury accident, normally needing medical treatment.

According to position in space and traffic conditions, public roads are divided as the following:

1. *Public roads in settlement (built-up area)* – is the part of public road within boundaries of settlement whose characteristics are defined by space, i.e. urbanistic plan for municipality, i.e. city. On public roads in settlement, the limited speed drive for vehicles is 50 km/h or in compliance with traffic sign.
2. *Public roads out of settlement (built-up area)* – is a part of public road out of settlement boundaries. The limited speed drive for vehicle on public roads out of settlement is defined by traffic sign, i.e. in motor-way up to 120 km/h, and in other roads up to 80 km/h.

Published and printed by Statistical Office of Montenegro (MONSTAT)  
81000 Podgorica, IV Proleterske 2, Phone (+382) 20 230-811, Fax (+382) 20 230-814

*Release prepared by:*

**Jelena POPOVIC and Mia RADUNOVIC**  
Phone +382-20-231-004;  
[contact@monstat.org](mailto:contact@monstat.org)