

Postal activities and telecommunication April 2012

This release presents data on number of letters, packages, registered mail and other printed papers, as well as data on minutes in fixed and mobile telecommunication.

Number of minutes in fixed telecommunication in April 2012 compared with the same month of previous year decreased 7.8%.

Number of minutes of mobile telecommunication in April 2012 compared with the same month of previous year increased 2.7%.

Graph 1. Annual indices of fixed and mobile telecommunication minutes

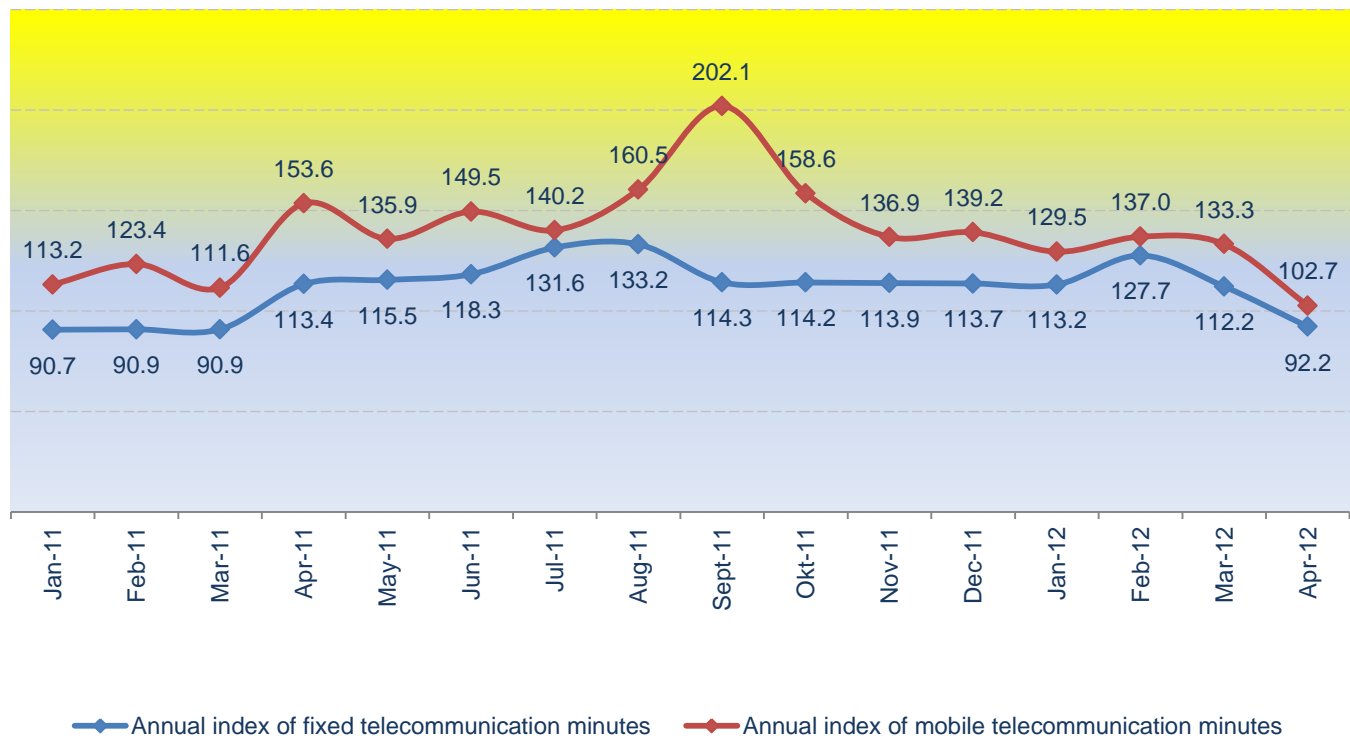


Table 1. Quantity indicators in postal and telecommunication activities

Month	Letters in thous. pieces	Packages in thous. pieces	Registered mail in thous. pieces	Other printed papers in thous. pieces	Fixed telecommunicat ion minutes in thous.	Mobile telecommunicat ion minutes in thous.
2012						
Jan	1 509	1	299	47	32 962	147 117
Feb	1 548	2	358	39	36 455	152 250
Mar	1 565	3	400	42	35 147	159 155
Apr	1 527	3	345	42	33 520	155 360
2011	20 488	29	4 273	594	423 869	1 803 764
Jan	1 738	2	275	50	29 127	113 633
Feb	1 789	2	336	44	28 557	111 120
Mar	1 810	3	391	53	31 333	119 423
Apr	1 790	2	353	49	36 345	151 318
May	1 720	2	340	50	37 259	143 581
Jun	1 641	2	365	53	38 023	166 319
Jul	1 698	3	342	54	39 901	185 191
Aug	1 649	2	325	52	39 367	187 402
Sep	1 718	2	368	51	36 121	163 111
Oct	1 676	3	379	43	36 038	158 061
Nov	1 637	3	408	50	34860	148 112
Dec	1 622	3	391	45	36 938	156 493
2010	20 763	25	4 171	642	380 585	1 262 626
Jan	1 587	2	282	56	32 114	100 359
Feb	1 649	2	376	62	31 417	90 049
Mar	1 729	2	388	52	34 464	107 013
Apr	1 694	2	360	64	32 063	98 495
May	1 673	2	342	61	32 252	105 630
Jun	1 814	2	349	47	32 143	111 225
Jul	1 876	2	364	58	30 328	132 107
Aug	1 838	2	289	53	29 564	116 760
Sep	1 669	2	341	43	31 615	80 698
Oct	1 665	2	347	42	31 546	99 671
Nov	1 659	2	340	42	30 594	108 205
Dec	1 910	3	393	62	32 485	112 414
2009	21 564	25	4 106	681	513 213	1 166 274
2008	20 521	25	4 227	930	650 567	1 027 704

Table 2. Postal services

Indices	<u>Apr 2012</u> Ø 2010	<u>Apr 2012</u> Mar 2012	<u>Apr 2012</u> Apr 2011	<u>Jan-Apr 2012</u> Jan-Apr 2011
Indices of letters	88.3	97.6	85.3	86.3
Indices of packages	144.0	100.0	216.0	100.0

Table 3. Indices of letter, packages, and letter mails

Month	Indices of letters			Indices of packages		
	2010=100	Monthly indices	Annual indices	2010=100	Monthly indices	Annual indices
2012						
Jan	86.0	76.5	108.7	87.9	104.4	94.0
Feb	103.0	119.7	106.5	72.9	83.0	88.6
Mar	115.1	111.7	102.3	78.5	107.7	79.2
Apr	88.3	97.6	85.3	144.0	100.0	216.0
2011	102.4			92.5		
Jan	79.1	70.0	97.5	93.5	80.6	89.3
Feb	96.7	122.2	89.4	82.2	88.0	71.0
Mar	112.5	116.4	100.8	99.1	120.5	101.9
Apr	101.6	90.3	98.1	91.6	92.5	76.6
May	97.8	96.3	99.4	93.5	102.0	82.0
Jun	105.0	107.4	104.6	99.1	106.0	112.8
Jul	98.4	93.7	94.0	100.9	101.9	93.1
Aug	93.5	95.0	112.5	97.2	96.3	98.1
Sep	105.9	113.2	107.9	95.3	98.1	118.6
Oct	109.0	103.0	109.2	80.4	84.3	102.4
Nov	117.4	107.7	120.0	93.5	116.3	119.0
Dec	112.5	103.2	99.5	84.1	90.0	72.6
2010	100.0			100.0		
Jan	81.1			104.7		
Feb	108.2	133.3		115.9	110.7	
Mar	111.6	103.2		97.2	83.9	
Apr	103.6	92.8		119.6	123.1	
May	98.4	95.0		114.0	95.3	
Jun	100.4	102.0		87.9	77.0	
Jul	104.7	104.3		108.4	123.4	
Aug	83.1	79.4		99.1	91.4	
Sep	98.1	118.0		80.4	81.1	
Oct	99.8	101.8		78.5	97.7	
Nov	97.8	98.0		78.5	100.0	
Dec	113.1	115.6		115.9	147.6	

Table 4. Indices of postal services

Indices	<u>Apr 2012</u> Ø 2010	<u>Apr 2012</u> Mar 2012	<u>Apr 2012</u> Apr 2011	<u>Jan-Apr 2012</u> Jan-Apr 2011
Indices of registered mail	99.3	86.3	97.7	103.5
Indices of other printed papers	78.5	100.0	85.7	86.7

Table 5. Indices of registered mail and other printed papers

Month	Indices of registered mail			Indices of other printed papers		
	2010=100	Monthly indices	Annual indices	2010=100	Monthly indices	Annual indices
2012						
Jan	86.0	76.5	108.7	87.9	104.4	94.0
Feb	103.0	119.7	106.5	72.9	83.0	88.6
Mar	115.1	111.7	102.3	78.5	107.7	79.2
Apr	99.3	86.3	97.7	78.5	100.0	85.7
2011	102.4			92.5		
Jan	79.1	70.0	97.5	93.5	80.6	89.3
Feb	96.7	122.2	89.4	82.2	88.0	71.0
Mar	112.5	116.4	100.8	99.1	120.5	101.9
Apr	101.6	90.3	98.1	91.6	92.5	76.6
May	97.8	96.3	99.4	93.5	102.0	82.0
Jun	105.0	107.4	104.6	99.1	106.0	112.8
Jul	98.4	93.7	94.0	100.9	101.9	93.1
Aug	93.5	95.0	112.5	97.2	96.3	98.1
Sep	105.9	113.2	107.9	95.3	98.1	118.6
Oct	109.0	103.0	109.2	80.4	84.3	102.4
Nov	117.4	107.7	120.0	93.5	116.3	119.0
Dec	112.5	103.2	99.5	84.1	90.0	72.6
2010	100.0			100.0		
Jan	81.1			104.7		
Feb	108.2	133.3		115.9	110.7	
Mar	111.6	103.2		97.2	83.9	
Apr	103.6	92.8		119.6	123.1	
May	98.4	95.0		114.0	95.3	
Jun	100.4	102.0		87.9	77.0	
Jul	104.7	104.3		108.4	123.4	
Aug	83.1	79.4		99.1	91.4	
Sep	98.1	118.0		80.4	81.1	
Oct	99.8	101.8		78.5	97.7	
Nov	97.8	98.0		78.5	100.0	
Dec	113.1	115.6		115.9	147.6	

Table 6. Indices of telecommunications

Indices	<u>Apr 2012</u> Ø 2010	<u>Apr 2012</u> Mar 2012	<u>Apr 2012</u> Apr 2011	<u>Jan-Apr 2012</u> Jan-Apr 2011
Index of mobile telecommunication minutes	105.7	95.4	92.2	110.1
Index of fixed telecommunication minutes	147.7	97.6	102.7	123.9

Table 7. Indices of fixed and mobile telecommunication minutes

Month	Index of fixed telecommunication minutes			Index of mobile telecommunication minutes		
	2010=100	Monthly indices	Annual indices	2010=100	Monthly indices	Annual indices
2012						
Jan	103.9	89.2	113.2	139.8	94.0	129.5
Feb	114.9	110.6	127.7	144.7	103.5	137.0
Mar	110.8	96.4	112.2	151.3	104.5	133.3
Apr	105.7	95.4	92.2	147.7	97.6	102.7
2011	111.4			142.9		
Jan	91.8	89.7	90.7	108.0	101.1	113.2
Feb	90.0	98.0	90.9	105.6	97.8	123.4
Mar	98.8	109.7	90.9	113.5	107.5	111.6
Apr	114.6	116.0	113.4	143.8	126.7	153.6
May	117.5	102.5	115.5	136.5	94.9	135.9
Jun	119.9	102.1	118.3	158.1	115.8	149.5
Jul	125.8	104.9	131.6	176.0	111.3	140.2
Aug	124.1	98.7	133.2	178.1	101.2	160.5
Sep	113.9	91.8	114.3	155.0	87.0	202.1
Oct	113.6	99.8	114.2	150.2	96.9	158.6
Nov	109.9	96.7	113.9	140.8	93.7	136.9
Dec	116.5	106.0	113.7	148.7	105.7	139.2
2010	100.0			100.0		
Jan	101.3			95.4		
Feb	99.1	97.8		85.6	89.7	
Mar	108.7	109.7		101.7	118.8	
Apr	101.1	93.0		93.6	92.0	
May	101.7	100.6		100.4	107.2	
Jun	101.3	99.7		105.7	105.3	
Jul	95.6	94.4		125.6	118.8	
Aug	93.2	97.5		111.0	88.4	
Sep	99.7	106.9		76.7	69.1	
Oct	99.5	99.8		94.7	123.5	
Nov	96.5	97.0		102.8	108.6	
Dec	102.4	106.2		106.8	103.9	

METHODOLOGICAL NOTES

Source of data

The data of postal and telecommunication activities are the result of regular monthly survey on reporting units with postal activities and telecommunication as the main activity.

Coverage

Surveys cover enterprises classified in the Classification Unit Register according to the activity classification in Section H (Postal activities), Area 53, and Section J (Telecommunication), Area 61.

Definitions

Postal service is a service of receiving, processing, transfer and delivering letter mails in accordance with accepted standards.

Letter is a type of communication in written form on paper or other appropriate data carrier, which must be sent and delivered to the address indicated by the sender on the item or letter cover.

The package is a postal consignment containing goods and items.

Registered mail is the item for which the sender is issued a certificate of acceptance and shall be delivered to the recipient with the signature in case of loss, damage or reduced content of the prescribed fee paid damages.

Other printed papers are printed publications issued by the publisher of a daily, occasionally or in a given period (newspapers and magazines).

Telecommunication services cover transfer of voice, data, text, and sound, and video material by the transmission equipment based on single technology or combination of several technologies.

Fixed telecommunication is services providing to users the access to public fixed network at the fixed location, and the use of public accessible telephone service at the fixed location.

Mobile telecommunication is services providing to users the access to public mobile network, and the use of mobile telecommunication services.

Published and printed by Statistical Office of Montenegro (MONSTAT)
81000 Podgorica, IV Proleterske 2, Phone (+382) 20 230-811, Fax (+382) 20 230-814

The release prepared by:

Mia RADUNOVIĆ
Phone: +382 20 231 004;
contact@monstat.org