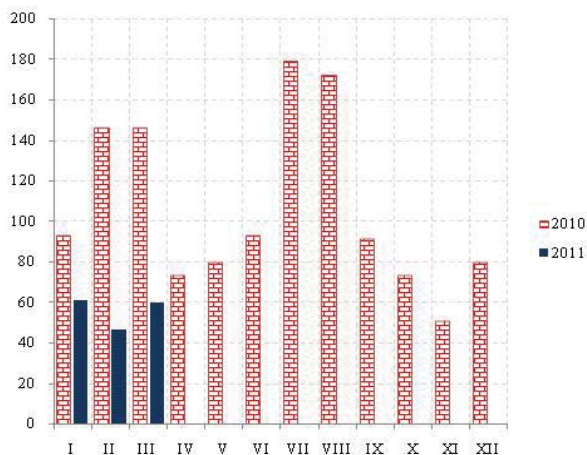


SAOBRAĆAJ, SKLADIŠTENJE I VEZE
TRANSPORT, STORAGE AND COMMUNICATIONS

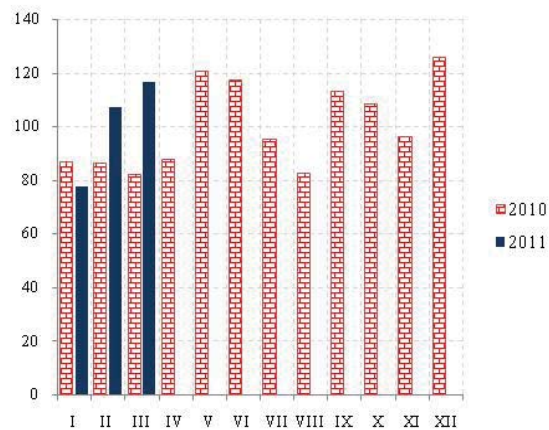
Željeznički saobraćaj / Railway transport

Ø 2010 = 100

Putnički / Passengers



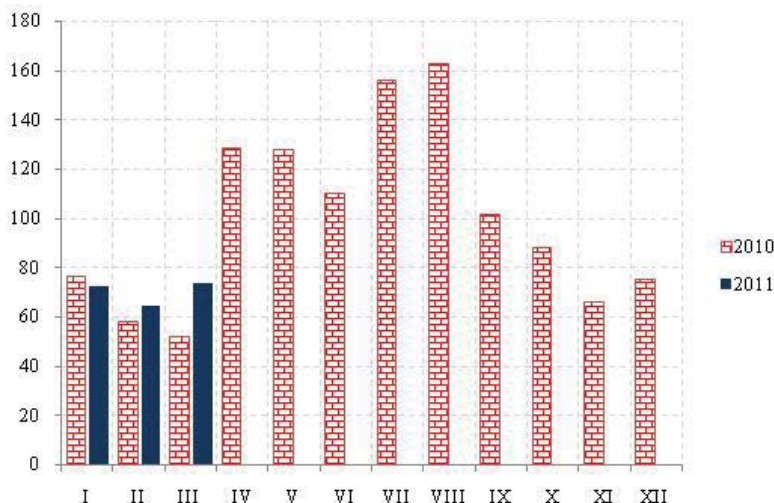
Robni / Goods



	ŽELJEZNIČKI SAOBRAĆAJ / RAILWAY TRANSPORT					
	Putnički / Passenger			Robni / Goods		
	indeks <i>Index</i>	putnici u 000 <i>Passengers, thousands</i>	putnički km u 000 <i>Passenger kilometres in thousands</i>	Indeks <i>Index</i>	prevoz robe u 000 t <i>Goods in thousands tonnes</i>	tonski km u 000 <i>Tonne- kilometres in thousands</i>
2006	145.0	1067	131500	120.9	2494	182163
2007	121.3	999	110000	122.7	1761	184957
2008	137.9	1031	125000	122.0	1740	183854
2009	109.4	852	99200	66.7	854	100546
2010	100.0	755	90660	100.0	1213	150699
Ø I – III 2010	103.7	42	7833	84.9	79	10667
Ø I – III 2011	55.6	41	4200	100.2	98	12585
2010						
III	72.8	40	5500	82.1	82	10311
IV	72.8	50	5500	87.5	91	10984
V	79.4	65	6000	120.4	118	15120
VI	92.7	70	7000	117.0	121	14698
VII	178.7	107	13500	95.0	101	11932
VIII	172.1	125	13000	82.3	88	10339
IX	90.8	70	6860	113.0	116	14187
X	72.8	53	5500	108.4	111	13610
XI	50.3	40	3800	95.9	111	12039
XII	79.4	50	6000	125.7	119	15789
2011						
I	60.8	40	4600	77.4	88	9720
II	46.3	38	3500	106.9	100	13430
III	59.6	45	4500	116.3	106	14606
I – III 2011 / I – III 2010	53.6	98.4	53.6	118.0	124.0	118.0

SAOBRAĆAJ, SKLADIŠTENJE I VEZE
TRANSPORT, STORAGE AND COMMUNICATIONS

Drumski saobraćaj - Putnički / Road transport - passengers



Ø 2010 = 100

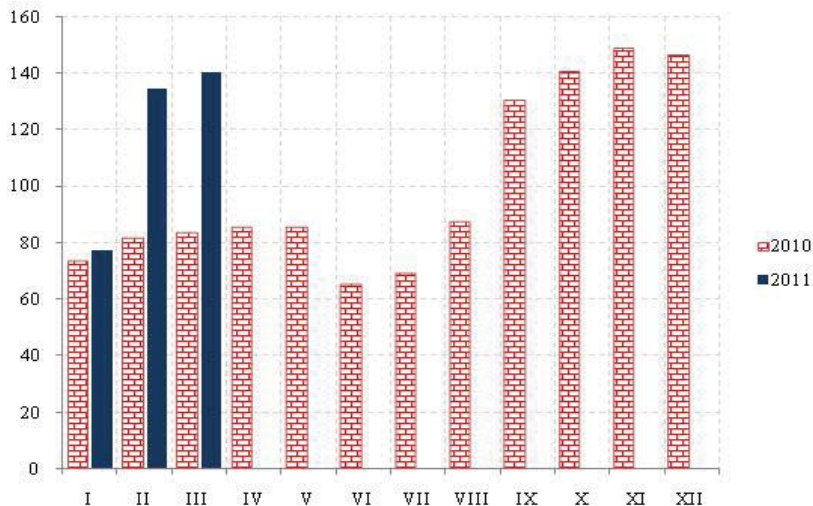
	DRUMSKI SAOBRAĆAJ / ROAD TRANSPORT							
	PUTNIČKI / PASSENGERS				ROBNI / GOODS			
	indeks Index	putnici u 000 Passengers, thous.	putnički km u 000 Passenger kilometres in thous.	autobuski km u 000 Bus kilometres in thous	indeks Index	roba u 000 tona Goods in thousands tonnes	tonski km u 000 Tonne- kilometres in thous.	kamionski km u 000 Truck kilometres in thous.
2006	141.9	4825	114695	16809	43.7	1961	72724	15167
2007	174.7	5738	141247	17630	55.1	2131	91786	16269
2008	152.7	5503	123421	18068	82.3	2468	137058	14857
2009	126.1	5536	101928	16272	107.6	1724	179288	11667
2010	100.0	6209	80833	20517	100.0	1839	166564	12411
Ø I – III 2010	62.0	302	4174	1380	73.7	139	10230	852
Ø I – III 2011	69.9	395	4711	1387	51.3	108	7115	900
2010								
III	51.8	223	3489	1297	112.0	138	15541	1201
IV	128.3	661	8643	1400	97.6	189	13549	1175
V	127.8	475	8609	2302	113.1	196	15699	1401
VI	109.8	564	7394	1964	81.3	170	11280	1466
VII	155.6	658	10484	1877	92.7	156	12868	1274
VIII	162.6	805	10954	2244	116.5	150	16168	1172
IX	101.3	593	6822	1931	70.9	140	9842	1044
X	87.7	520	5906	1698	70.5	132	9787	802
XI	66.1	534	4455	1460	279.0	171	38731*	838
XII	74.9	493	5044	1502	57.0	119	7951	684
2011								
I	72.2	352	4864	1398	43.1	121	5980	620
II	64.3	410	4329	1364	57.9	126	8038	732
III	73.3	423	4940	1400	52.8	78	7327	677
I – III 2011 / I – III 2010	112.9	130.8	112.9	100.5	69.5	78.1	69.5	105.7

*Do ovog povećanja je doslo usled značajnog povećanja prevezenih tona rude kroz teritoriju Crne Gore.

SAOBRAĆAJ, SKLADIŠTENJE I VEZE
TRANSPORT, STORAGE AND COMMUNICATIONS

Ø 2010 = 100

Vazdušni saobraćaj - putnički / Air transport - passengers



	GRADSKI SAOBRAĆAJ LOCAL TRANSPORT		VAZDUŠNI SAOBRAĆAJ, PROMET NA AERODROMIMA AIR TRANSPORT, TRAFFIC AT AIRPORTS		
	indeks Index	prevezeno putnika u 000 Passengers in thousands	PUTNIČKI / PASSENGERS		ROBNI / GOODS
			indeks Index	prevoz putnika Transport of passengers	prevoz robe u tonama Transport of goods in tonnes
2006	269.7	1591	69.2	833715	1067
2007	252.7	1491	85.0	1024491	1320
2008	262.2	1547	92.0	1109095	1490
2009	92.2	544	79.3	956405	1478
2010	100.0	590	100.0	1205536	2159
Ø I – III 2010	79.6	39	47.1	47357	53
Ø I – III 2011	118.4	58	48.0	48230	145
2010					
III	83.7	41	52.1	52324	57
IV	85.7	42	58.4	58640	63
V	85.7	42	88.6	89026	294
VI	65.3	33	137.0	137628	378
VII	69.4	34	206.3	207256	293
VIII	87.8	44	213.6	214610	377
IX	130.6	64	146.5	147178	59
X	140.8	69	78.9	79266	62
XI	149.0	73	57.8	58106	77
XII	146.9	72	71.4	71755	397
2011					
I	77.5	38	52.8	53001	44
II	134.7	66	42.0	42174	324
III	140.8	69	49.3	49514	68
I – III 2011 / I – III 2010	147.9	147.9	101.8	101.8	274.2

SAOBRAĆAJ, SKLADIŠTENJE I VEZE / TRANSPORT, STORAGE AND COMMUNICATIONS
POMORSKI SAOBRAĆAJ / MARINE TRANSPORT

	Prevoz robe / Transport of goods			Promet u lukama (u tonama) / Turnover in harbours (tonnes)				
	Indeks Index	u 000 t In thous. tonnes	tonske milje u hilj. Tonne milles in thousands	Indeks Index	ukupno Total	unutrašnji romet Internal turnover	izvoz ¹⁾ Export	uvoz ²⁾ Import
2006	159.0	818	380	113.1	1988204	116	1027208	941905
2007	170.7	785	408	117.8	2071310	1825	791509	1280327
2008	147.3	595	352	110.8	1949409	8350	683990	1219948
2009	114.2	541	273	84.2	1481069	-	613696	829491
2010	100.0	441	239	100.0	1758692	-	835499	798668
Ø I – III 2010	70.0	35	14	77.1	112964		61286	47951
Ø I – III 2011	45.0	30	9	67.3	98665		50468	48194
2010								
III	85.0	50	17	76.4	111961	-	55091	52544
IV	75.0	45	14	143.3	209956	-	58280	52613
V	85.0	53	17	86.1	126164	-	67239	58629
VI	80.0	47	16	112.4	164661	-	90728	71140
VII	270.0	30	54	135.5	198601	-	120911	76044
VIII	245.0	23	49	104.9	153779	-	42213	108584
IX	125.0	42	25	100.6	147495	-	47280	97623
X	-	29	...	69.8	102351	-	52928	49086
XI	60.0	37	12	116.8	171166	-	113619	53911
XII	60.0	30	12	99.4	145626	-	58442	87184
2011								
I	40.2	23	8	55.2	80852	-	42735	38117
II	29.2	36	6	67.2	98453	-	43911	54532
III	60.0	30	12	79.6	116690	-	64758	51932
I – III 2011/I – III 2010	64.3	85.7	64.3	87.3	87.3		82.3	100.5

¹⁾Tranzit utovar prikazan kod izvoza ²⁾Tranzit istovar prikazan kod uvoza / ¹⁾Transit loading presented in export. ²⁾Transit loading presented in import.

P T T SAOBRAĆAJ / POSTAL, TELEGRAPH AND TELEPHONE (PTT) COMMUNICATIONS

	Poštanske usluge / Postal services		Telegrafske usluge / Telegraph services		Telefonske usluge / Telephone services	
	pisma u 000 komada Letters in thousands pcs.	paketi u 000 komada Packages in thousands pcs.	uputnice u 000 komada Postal orders in thousands pcs.	teleg. u 000 komada Telegraphs in thousands pcs.	fiksna telefonija Fixed telephony minuti u 000 Minutes in thous.	mobilna telefonija Mobile telephony minuti u 000 Minutes in thous.
	2006	17396	30	45	581	862596
2007	18291	23	44	589	864471	660168
2008	20521	25	37	507	650567	1027704
2009	21564	25	34	476	513213	1166274
2010	20763	25	36	419	380585	1262626
Ø I – III 2010	1655	2	3	36	32665	99140
Ø I – III 2011	1779	2	3	33	29672	114725
2010						
III	1729	2	3	40	34464	107013
IV	1694	2	2	36	32063	98495
V	1673	2	4	35	32252	105630
VI	1814	2	3	38	32143	111225
VII	1876	2	3	38	30328	132107
VIII	1838	2	3	34	29564	116760
IX	1669	2	3	32	31615	80698
X	1665	2	3	30	31546	99671
XI	1659	2	5	35	30564	108205
XII	1910	3	4	33	32485	112414
2011						
I	1738	2	3	33	29127	113633
II	1789	2	3	36	28557	111120
III	1810	3	4	29	31333	119423
I – III 2011/I – III 2010	107.5	116.7	142.8	90.7	90.8	115.7