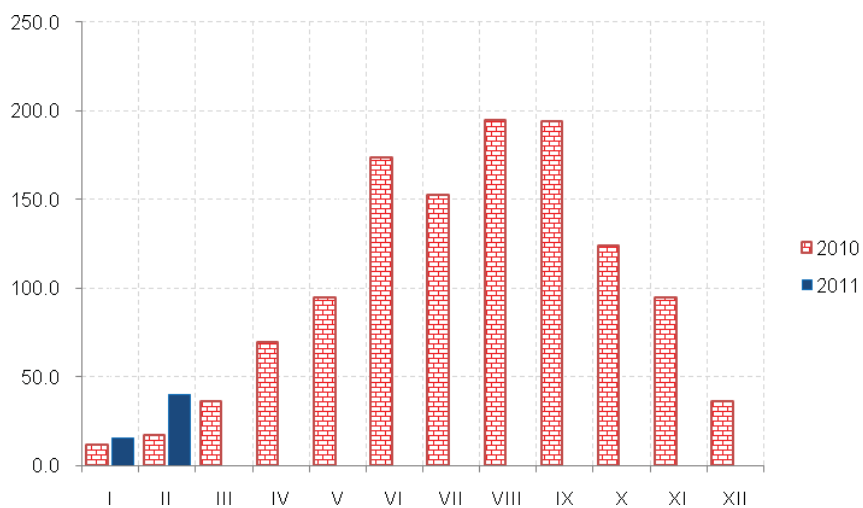


ŠUMARSTVO / FORESTRY



Ø 2010 = 100

	Indeks Index	Ukupno Total	Proizvedeni sortimenti, m³ / Production of forests assortments						
			Četinara / Conifers				Lišćara / Deciduous trees		
			trupci Saw logs	tehničko drvo Lumber	prostorno drvo Space wood	ogrijevno drvo Firewood	trupci Saw logs	prostorno drvo Space wood	ogrijevno drvo Firewood
2006	130.3	325896	194057	11808	12798	1334	46736	15406	43754
2007	105.0	263787	151440	8878	12623	367	45000	14388	31091
2008	113.0	281260	160901	13090	17492	861	46467	9655	32794
2009	85.7	216546	128520	6525	10992	2149	29121	5748	33491
2010	100.0	256410	146074	10373	19993	504	32851	6349	40266
I – II 2010	16.9	5507	4433	135	726	-	-	30	183
I – II 2011	27.6	11121	7484	426	2217	-	587	55	352
2010									
I	11.8	2337	1703	70	524	-	-	25	15
II	17.1	3170	2730	65	202	-	-	5	168
III	36.3	6970	5603	474	425	-	-	127	341
IV	69.6	13241	9744	961	1031	43	1115	137	210
V	94.6	20041	11415	828	944	91	2833	408	3522
VI	173.8	36001	21847	1346	2725	293	4471	832	4487
VII	152.4	32738	16636	879	2416	36	6613	774	5384
VIII	195.2	44046	20594	1683	3066	22	8026	1470	9185
IX	194	42465	23209	1791	3471	3	5278	579	8134
X	123.9	26630	15554	1114	2011	1	2679	1112	4159
XI	95	20923	12269	890	2270	1	1412	722	3359
XII	36.3	7848	4770	272	908	14	424	158	1302
2011									
I	15.3	2955	2088	93	353	-	254	1	166
II	39.8	8166	5396	333	1864	-	333	54	186
I – II 2011/I – II 2010	163.3	201.9	168.8	315.5	305.4	-	-	183.3	192.3