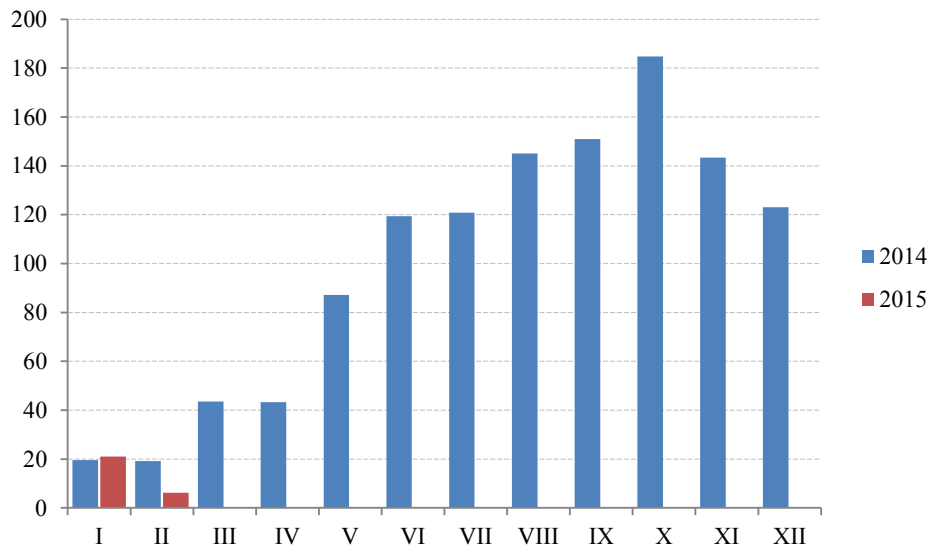


ŠUMARSTVO / FORESTRY



Ø 2014 = 100

| | Indeks Index | Ukupno Total | Proizvedeni sortimenti, m ³ / Production of forests assortments | | | | | | |
|----------------------------------|-----------------|-----------------|--|----------------------------|---------------------------------|-------------------------------|---------------------------|---------------------------------|-------------------------------|
| | | | Četinara / Conifers | | | | Lišćara / Deciduous trees | | |
| | | | trupci Saw logs | tehničko drvo Lumber | prostorno drvo Space wood | ogrijevno drvo Firewood | trupci Saw logs | prostorno drvo Space wood | ogrijevno drvo Firewood |
| 2011 | 92,2 | 293 734 | 151 956 | 7 457 | 34 839 | 361 | 44 910 | 12 662 | 41 549 |
| 2012 | 77,3 | 240 900 | 133 062 | 7 138 | 11 124 | 2 303 | 34 545 | 13 108 | 39 620 |
| 2013 | 84,8 | 255 559 | 152 211 | 8 368 | 14 573 | 1 534 | 38 055 | 10 010 | 30 808 |
| 2014 | 100,0 | 308 345 | 181 720 | 9 031 | 32 995 | 1 667 | 36 685 | 12 911 | 33 336 |
| Ø I – II 2014 | 19,4 | 4 682 | 3 257,5 | 296 | 314 | 5,5 | 419 | 78 | 312 |
| Ø I – II 2015 | 13,6 | 3 556 | 2 045,5 | 186 | 450 | - | 422,5 | 355 | 97 |
| 2014 | | | | | | | | | |
| II | 19,2 | 4 422 | 3 734 | 229 | 236 | - | 25 | 26 | 172 |
| III | 43,5 | 10 017 | 8 059 | 256 | 825 | - | 439 | 74 | 364 |
| IV | 43,2 | 10 375 | 6 808 | 516 | 566 | - | 1 249 | 117 | 1 119 |
| V | 87,1 | 21 232 | 14 153 | 805 | 1 567 | - | 1 988 | 581 | 2 138 |
| VI | 119,4 | 30 550 | 16 803 | 1 054 | 2 278 | - | 5 449 | 1 555 | 3 411 |
| VII | 120,8 | 31 872 | 15 553 | 771 | 2 888 | - | 6 767 | 1 749 | 4 144 |
| VIII | 145,1 | 38 329 | 19 896 | 965 | 3 514 | - | 6 480 | 2 163 | 5 311 |
| IX | 151,0 | 39 550 | 23 247 | 1 072 | 4 477 | 742 | 3 926 | 2 593 | 3 493 |
| X | 184,7 | 47 669 | 28 779 | 1 053 | 6 528 | 151 | 4 483 | 1 129 | 5 546 |
| XI | 143,3 | 36 633 | 22 931 | 1 213 | 4 706 | 307 | 2 622 | 1 576 | 3 278 |
| XII | 123,0 | 32 754 | 18 976 | 734 | 5 018 | 456 | 2 444 | 1 218 | 3 908 |
| 2015 | | | | | | | | | |
| I | 21,0* | 5 351 | 3 329 | 232 | 830 | 213 | 389 | 194 | 164 |
| II | 6,2 | 1 761 | 762 | 140 | 70 | - | 456 | 303 | 30 |
| I – II 2015 / I – II 2014 | 70,1 | 75,9 | 62,8 | 62,8 | 143,3 | - | 100,8 | 455,1 | 31,1 |