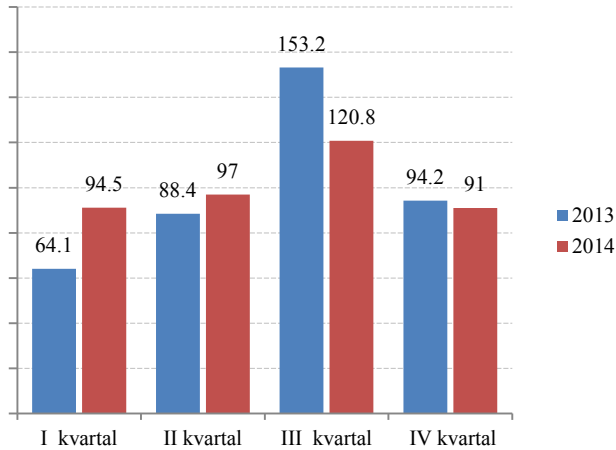


SAOBRAĆAJ, SKLADIŠTENJE I VEZE
TRANSPORT, STORAGE AND COMMUNICATIONS

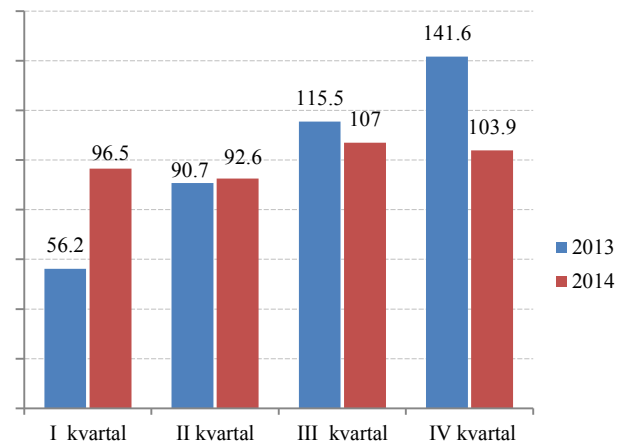
Željeznički saobraćaj / Railway transport

Ø 2014 = 100

Putnički / Passengers



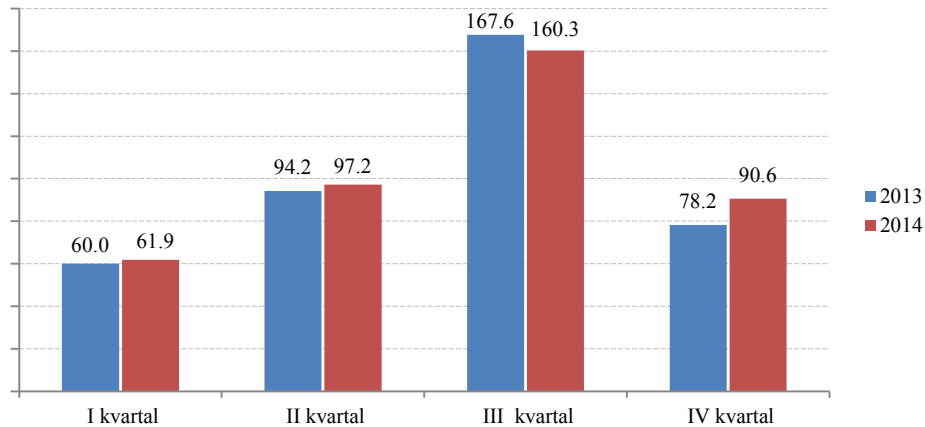
Robni / Goods



	ŽELJEZNIČKI SAOBRAĆAJ / RAILWAY TRANSPORT					
	Putnički / Passenger			Robni / Goods		
	indeks Index	putnici u 000 Passengers, thousands	putnički km u 000 Passenger kilometres in thousands	Indeks Index	prevoz robe u 000 t Goods in thousands tonnes	tonski km u 000 Tonne-kilometres in thousands
2009	135,1	852	99 200	96,0	854	100 546
2010	123,4	755	90 660	143,9	1213	150 699
2011	88,6	692	65 100	129,4	1050	135 522
2012	84,9	781	62 377	70,0	683	73 337
2013	100,0	922	73 439	100,0	1 049	104 731
2013						
I kvartal/ quarter	64,1	160	11 777	56,2	165	14 711
II kvartal/quarter	88,4	205	16 239	90,7	246	23 752
III kvarta/ quarter	153,2	307	28 122	111,5	269	29 188
IV kvarta/ quarter	94,2	250	17 301	141,6	369	37 080
2014						
I kvartal/ quarter	91,1	239	17 342	96,5	246	22 773
II kvartal/quarter	97,0	278	18 473	92,6	223*	21 850
III kvarta/ quarter	120,8	339	23 000	107,0	209	25 236
IV kvarta/ quarter	91,0	266	17 327	103,9	225	24 500

SAOBRAĆAJ, SKLADIŠTENJE I VEZE
TRANSPORT, STORAGE AND COMMUNICATIONS

Drumski saobraćaj - Putnički / Road transport - passengers



Ø 2014 = 100

	DRUMSKI SAOBRAĆAJ / ROAD TRANSPORT							
	PUTNIČKI / PASSENGERS				ROBNI ¹⁾ / GOODS ¹⁾			
	indeks <i>Index</i>	putnici u 000 <i>Passengers, thous.</i>	putnički km u 000 <i>Passenger kilometres in thous.</i>	autobuski km u 000 <i>Buskilometres in thous</i>	indeks <i>Index</i>	roba u 000 tona <i>Goods in thousands tonnes</i>	tonski km u 000 <i>Tonne- kilometres in thous.</i>	PreČeni km vozila sa utovarom, u hilj. <i>Kilometres made, in thous.</i>
2009	93,7	5 536	101 928	16 272	266,4	1 724	179 288	11 667
2010	74,3	6 209	80 833	20 517	247,5	1 839	166 564	12 411
2011	73,7	6 240	80 166	18 700	152,2	1 247	102 465	12 108
2012	102,2	5 726	111 242	19 086	113,6	398	76 450	12 014
2013	100,0	6 220	108 802	16 697	100,0	684	67 305	9 659
2013								
I kvartal/ quarter	60,0	1 031	16 324	3 440	91,5	98	15 394	2 432
II kvartal/quarter	94,2	1 423	25 620	4 290	108,0	220	18 165	2 559
III kvarta/ quarter	167,6	2 003	45 595	5 247	108,8	194	18 312	2 457
IV kvarta/ quarter	78,2	1 763	21 263	3 720	91,7	172	15 434	2 211
2014								
I kvartal/ quarter	61,9	1 353	16 644	3 624	...	152	29 245	1 874
II kvarta/quarter	87,2	1 621	23 438	4 108	...	181*	35 476*	1 767*
III kvarta/ quarter	160,3	2 136	43 099	5 008	...	169	36 444	1 907
IV kvarta/ quarter	90,6	1 779	24 356	4 256

¹⁾ Izmjena metodologije za sprovođenje istraživanja o drumskom teretnom saobraćaju izazvala je prekid u vremenskoj seriji.

¹⁾ Changes in the methodology for conducting research on road freight transport has caused a break in the time series.

Napomena: Isprekidana linija označava prekid serije / Note: Broken/dotted line implies the break in series

SAOBRAĆAJ, SKLADIŠTENJE I VEZE
STORAGE AND COMMUNICATIONS

Ø 2014 = 100

PROMET NA AERODROMIMA/ TRAFFIC AT AIRPORTS

	PUTNIČKI / PASSENGERS		ROBNI / GOODS
	indeks <i>Index</i>	prevoz putnika <i>Transport of passengers</i>	prevoz robe u tonama <i>Transport of goods in tonnes</i>
2009	61,8	956 405	1 478
2010	77,8	1 205 536	2 159
2011	81,2	1 258 835	1 074
2012	87,6	1 357 516	766
2013	100,0	1 549 277	768
2013			
I kvartal/ quarter	37,8	146 325	157
II kvartal/quarter	103,5	401 025	200
III kvarta/ quarter	208,0	805 788	205
IV kvarta/ quarter	50,6	196 139	206
2014			
I kvartal/ quarter	38,1	153 729	165
II kvartal/quarter	105,8	426 445*	221
III kvarta/ quarter	202,3	815 366*	246*
IV kvarta/ quarter	53,7	216 590	230

GRADSKI SAOBRAĆAJ/ LOCAL TRANSPORT

Kvartali/ <i>Quarters</i>	indeks <i>Index</i>	prevezeno putnika u 000 <i>Passengers in thousands</i>
2010	84,4	590
2011	104,1	728
2012	91,1	637
2013	100,0	699
2013		
I kvartal/ quarter	84,1	147
II kvartal/quarter	96,1	168
III kvarta/ quarter	106,4	186
IV kvarta/ quarter	113,3	198
2014		
I kvartal/ quarter	85,4	165
II kvartal/quarter	87,5	169
III kvarta/ quarter	106,6	206
IV kvarta/ quarter	120,6	233

SAOBRAĆAJ, SKLADIŠTENJE I VEZE / TRANSPORT, STORAGE AND COMMUNICATIONS
POMORSKI SAOBRAĆAJ / MARINE TRANSPORT

Ø 2014 = 100

	Prevoz robe i putnika / Transport of goods and passengers			Promet u lukama (u tonama) / Turnover in harbours (tonnes)				
	indeks prev. putnika <i>Index of passengers</i>	roba u tonama <i>Goods in tonnes</i>	putnici <i>Passengers</i>	indeks <i>Index</i>	ukupno <i>Total</i>	unutrašnji promet <i>Internal turnover</i>	izvoz ¹⁾ <i>Export</i>	uvoz ²⁾ <i>Import</i>
2010	159,8	441 424	68 856	135,8	1 758 692	-	835 499	798 668
2011	161,1	280 190	69 436	135,1	1 749 982	-	758 193	960 360
2012	123,6	108 642	53 259	94,8	1 227 877	-	416 978	800 187
2013	100,0	51 059	43 097	100,0	1 295 366	-	597 675	669 384
2013								
I kvartal/ quarter	45,8	10 146	4 936	80,1	259 350	-	111 666	132 979
II kvartal/quarter	73,7	12 846	7 945	116,2	376 305	-	172 603	194 634
III kvarta/ quarter	236,9	14 021	25 528	106,7	345 405	-	180 657	160 214
IV kvarta/ quarter	43,5	14 046	4 688	97,1	314 306	-	132 749	181 557
2014								
I kvartal/ quarter	40,1	15 771	4 260	78,4	243 451	-	94 292	149 159
II kvartal/quarter	76,3	15 460	8 102	99,4	308 449	-	127 559	179 447
III kvarta/ quarter	244,6	12 594	25 985	120,9	375 229	-	162 294	212 718
IV kvarta/ quarter	39,0	10 815	4 142	101,3	314 302	-	149 635	164 667

¹⁾Tranzit utovar prikazan kod izvoza²⁾Tranzit istovar prikazan kod uvoza¹⁾Transit loading presented in export²⁾Transit loading presented in import

P T T SAOBRAĆAJ / POSTAL, TELEGRAPH AND TELEPHONE (PTT) COMMUNICATIONS

	Poštanske usluge ¹⁾ / Postal services ¹⁾			Telefonske usluge / Telephone services	
	pisma u 000 komada <i>Letters in thousands pcs.</i>	paketi u 000 komada <i>Packages in thousands pcs.</i>	Tiskovine i ostalo, u 000 komada <i>Other printed papers in thousands pcs.</i>	fiksna telefonija <i>Fixed telephony</i>	mobilna telefonija <i>Mobile telephony</i>
				minuti u 000 <i>Minutes in thous.</i>	minuti u 000 <i>Minutes in thous.</i>
2010	7 588	25	642	380 585	1 262 626
2011	7 488	29	594	423 869	1 803 764
2012	9 458	37	497	408 638	1 972 182
2013	11 335	42	70	362 301	1 989 825
2013					
I kvartal/ quarter	3 099	10	21	91 748	447 541
II kvartal/quarter	3 003	12	16	92 262	496 832
III kvarta/ quarter	2 387	10	15	92 655	544 371
IV kvarta/ quarter	2 846	10	18	85 636	501 081
2014					
I kvartal/ quarter	3 192	14	20	73 057	479 539
II kvartal/quarter	3 080	23	16	74 218	558 078
III kvarta/ quarter	3 247	12	16	68 800	613 211
IV kvarta/ quarter	3 402	18	36	66 562	551 220