

Investments in fixed capital for 2016

Data on investments in fixed capital of legal entities in Montenegro for 2016 in current prices are published in this release. Data on investments are result of survey “Annual Report on Investments into fixed capital” (INV-01) and methodology used is harmonized with European System of national Accounts (ESA 2010). Data are presented according to organizational principle (investments are sorted by the seat and activity of the investor), and they are presented on sector level according to Classification of activities 2010 (KD 2010).

Investments in fixed capital in Montenegro in 2016 are 652.8 million EUR, while in 2015 they were 549.8 million EUR. Nominal growth rate of investments in 2016 is 18.7%.

Graph 1. Investments in current prices, in € thousand

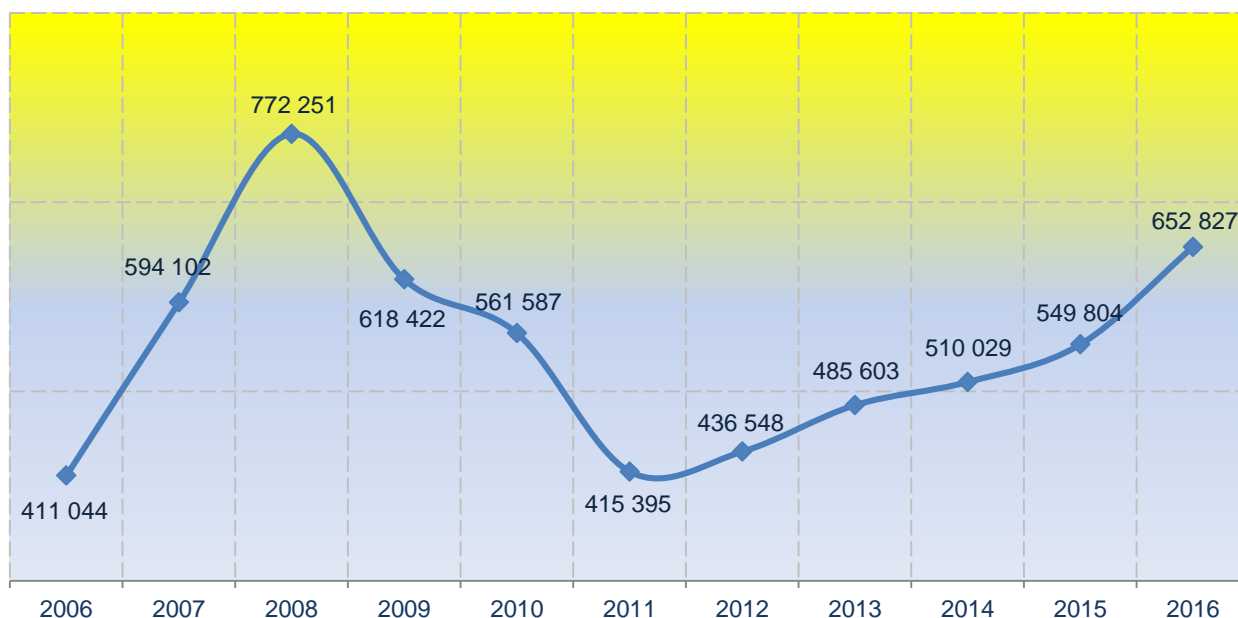


Table 1. Investments in fixed capital, current prices

	<i>In € thousand</i>	
	2015	2016
TOTAL	549 804	652 827
Construction works	290 505	303 167
Equipment	213 249	255 334
Other	46 050	94 326

Table 2. Realized investments into fixed capital according to investors activity

	<i>In € thousand</i>	
	2015	2016
TOTAL	549 804	652 827
A Agriculture, forestry and fishing	5 593	5 756
B Mining and quarrying	12 409	11 514
C Manufacturing	35 005	31 796
D Provision with electric energy, gas, steam and air conditioning	43 335	62 587
E Provision with water, waste water management	6 733	10 530
F Construction	24 520	40 344
G Retail and sale trade, repair of motor vehicle	76 041	74 799
H Transport and storage	30 581	33 780
I Accommodation and alimentation services	26 553	36 768
J Information and communication	72 467	130 033
K Financial activities an insurance activities	20 963	15 578
L Real estate activities	6 708	3 468
M Professional, scientific and technical activities	17 843	13 418
N Administrative and supporting service activities	4 527	2 242
O Public administration and defence, compulsory social insurance	151 018	154 626
P Education	3 971	2 635
Q Health and Social Insurance	4 539	12 581
R Art, entertainment and recreation	6 566	9 606
S Other service activities	432	767

Graph 2. Structure of investments in current prices, in %

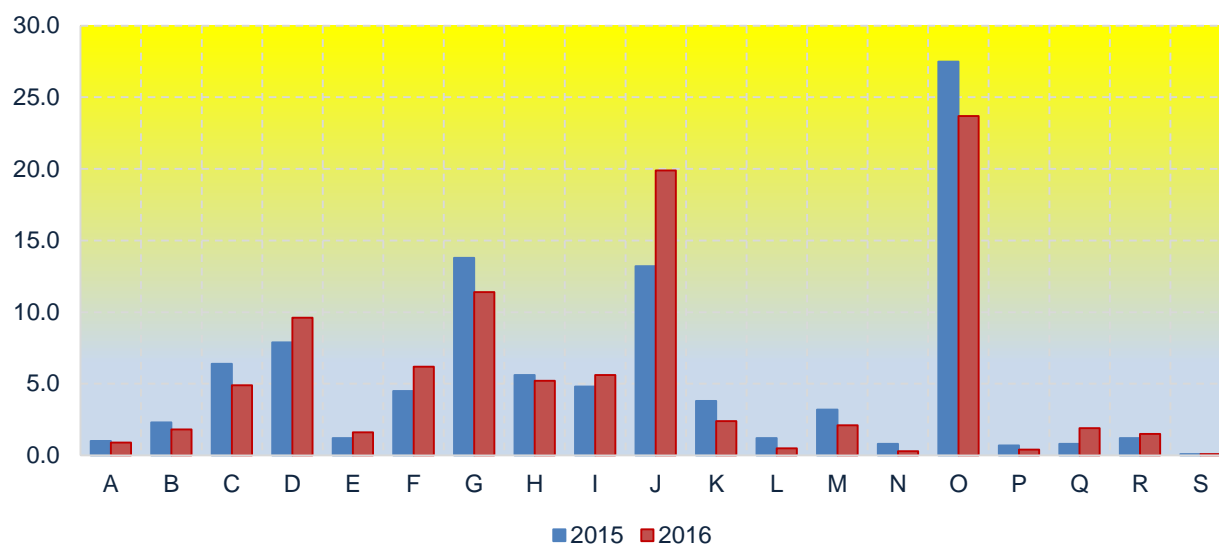


Table 3. Structure of realized investments into fixed capital according to investor's activity, current prices

	<i>In %</i>	
	2015	2016
TOTAL	100.0	100.0
A Agriculture, forestry and fishing	1.0	0.9
B Mining and quarrying	2.3	1.8
C Manufacturing	6.4	4.9
D Provision with electric energy, gas, steam and air conditioning	7.9	9.6
E Provision with water, waste water management	1.2	1.6
F Construction	4.5	6.2
G Retail and sale trade, repair of motor vehicle	13.8	11.4
H Transport and storage	5.6	5.2
I Accommodation and alimentation services	4.8	5.6
J Information and communication	13.2	19.9
K Financial activities an insurance activities	3.8	2.4
L Real estate activities	1.2	0.5
M Professional, scientific and technical activities	3.2	2.1
N Administrative and supporting service activities	0.8	0.3
O Public administration and defence, compulsory social insurance	27.5	23.7
P Education	0.7	0.4
Q Health and Social Insurance	0.8	1.9
R Art, entertainment and recreation	1.2	1.5
S Other service activities	0.1	0.1

METHODOLOGICAL EXPLANATION

Source of data

Data on investments are collected with special "Annual Report on investments in fixed capital" (INV-01) from legal persons in country if they are direct investors. For survey INV-01 data are collected on a random stratified sample and stratification is based on sections of Classification of Activities 2010 (KD 2010) and the class of number of employees. All large and medium-sized enterprises are covered with this survey, while small enterprises are selected by random sampling. Questionnaire INV-01 was partially changed from 2006 and adjusted to international statistical standards and methodologies, i.e. European System of National Accounts (ESA 2010).

Coverage

For collection and publication for professional purpose Classification of Activities KD 2010 is used and data are published at sector level.

Data are grouped according to organizational principle:

- According to the main activity and the seat of investor.

Definitions

Investments in fixed capital are purchases made by business entities in order to acquire new assets, increase the values of or replace existing fixed assets (dwelling buildings, other buildings and structures, machinery and equipment, cultivated biological resources and intellectual property products: research and development, mineral exploration and evaluation, computer software and databases, entertainment, literary or artistic originals and other intellectual property products).

Realized investment during the reference year is the value of actual construction, building or procurement of facilities, equipment etc., regardless of whether they are completed or not and payment made.

Acquired investments goods can be new or already used, purchased or received with no compensation from others in the country or abroad or self-produced. All investments into new capacity extensions, reconstruction and modernization of existing or replacement of old ones, ruined capacities are included. Investments do not cover expenditures spent for regular and current maintenance of existing infrastructure.

*Published and printed by Statistical Office of Montenegro - MONSTAT
81000 Podgorica, IV Proleterske 2, Phone (+382) 20 230 811, Fax (+382) 20 230 814*

Release prepared by:

Radojka BOJIĆ

Phone +382-20-230 805

e-mail: contact@monstat.org