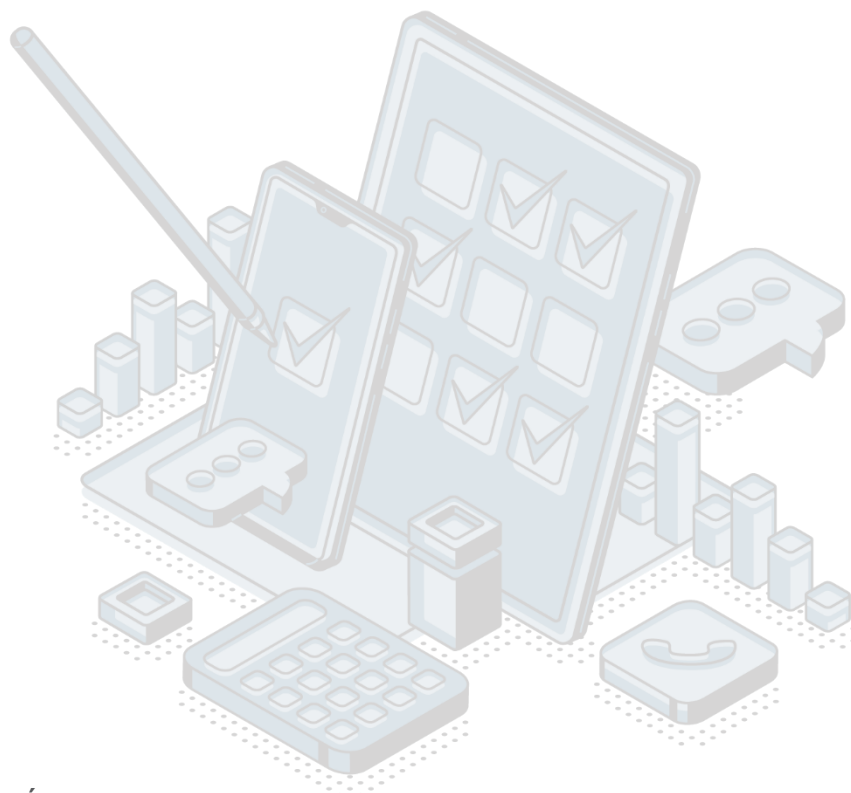


QUALITY REPORT 2022

Annual survey on transport



Responsible person: Jelena POPOVIĆ

Department: Department for Business Statistics and Short-term Indicators

Table of contents:

1. Introduction – Basic information about the survey	3
1.1 Purpose, goal and subject of the survey.....	3
1.2 Legal basis.....	3
1.3 Statistical units	3
1.4 Coverage and scope of survey	4
1.4.1 Sectors	4
1.4.2 Statistical population	4
1.5 Referent geographical area	4
1.6 Concepts and definitions	4
1.7 Classifications.....	5
1.8 Frequency of data collection	5
1.9 Frequency of data dissemination.....	5
1.10 Methodology.....	5
1.11 Base period	5
1.12 Unit of measure.....	5
1.13 Source of data.....	5
1.14 Method of collection data	6
2. Relevance – Data users	6
2.1 User needs.....	6
2.2 User satisfaction.....	6
3. Accuracy and reliability	6
3.1 Accuracy – Overall remark	6
3.2 Sampling error	6
Indicators of sampling error	7
3.3 Non-sampling error.....	7
3.3.1 Coverage error.....	7
Indicators of coverage error.....	7
3.3.2 Error of measurement	7
3.3.3 Non response error	7
3.3.4 Data processing error.....	7
Imputation rate	7
3.4 Seasonal adjustment.....	7
3.5 Data revision.....	7
3.5.1 Data revision policy.....	7
3.5.2 Data revision practice.....	8
3.5.3 Data revision - average size.....	8
4. Timeliness and punctuality	8
4.1 Timeliness.....	8
Time lag of the first results	8
Time lag of the final results.....	8
4.2 Punctuality	8
5. Availability and clarity	8
5.1 Statistical Release Calendar	8
5.2 Access the data release calendar.....	8
5.3 Release.....	9
5.4 Publication	9
5.6 Availability of microdata	9
5.7 Metadata occupancy	9
6. Comparability	9
6.1 Comparability - geographical	9
6.2 Comparability - over time.....	9

1. Introduction – Basic information about the survey

1.1 Purpose, goal and subject of the survey

The aim of annual surveys in the field of transport statistics is collecting, processing, and disseminating data on passengers, goods, and infrastructure by type of traffic as well as data of the postal and telecommunications services and infrastructure in the postal and telecommunications traffic. Furthermore, the aim is collecting processing and disseminating data on traffic accidents, injured and killed persons in accidents and data on registered road motor vehicles and trailers.

1.2 Legal basis

The Law on Official Statistics and Official Statistical System ([Official Gazette of Montenegro No 18/12 and 47/19) defines provisions for collection, processing, and dissemination of data. The Law provides to the Statistical Office clear and wide legal powers to collect and access the data necessary for the implementation of Programme and Annual Plan. The Law gives a priority to the use of administrative data and right of access to individual data that are a result of survey of other official statistical producers. As an annex to legal provisions, Statistical Office has signed several memoranda on cooperation with administrative data providers.

EU regulations defining this area of statistics:

1. Regulation (EU) 2018/643 of the European Parliament and of the Council on rail transport statistics (recast);
2. Directive 2009/42/EC of the European Parliament and of the Council of 6 May 2009 on statistical returns in respect of carriage of goods and passengers by sea (recast);
3. Regulation (EU) No 70/2012 of the European Parliament and of the Council of 18 January 2012 on statistical returns in respect of the carriage of goods by road (recast);
4. Regulation (EC) No 437/2003 of the European Parliament and of the Council of 27 February 2003 on statistical returns in respect of the carriage of passengers, freight and mail by air;
5. Council Decision (EC) 93/704 on the creation of a Community database on road accidents.

1.3 Statistical units

Data source: (i) for rail transport are reporting units with the carriage of passengers and goods by rail prevailing activity (Section H, field 49); (ii) road passenger traffic reporting units with the carriage of passengers in road traffic prevailing activity (Section H, field 49); (iii) road freight transport vehicles for transportation of goods payload of 3500 kg and higher, as well as tractors. Sources of data are legal and natural persons who are owners or users of vehicles there are in the sample. Frame for sample selection is a database of registered vehicles that are obtained from Ministry Interior of Montenegro; (iv) local road traffic reporting units with the carriage of passengers in local road (urban) traffic prevailing activity (Section H, field 49); (v) traffic at airports reporting units that perform service activities in air traffic (Section H, field 52); (vi) air traffic reporting units which operate in air traffic (Section H, field 51); (vii) maritime traffic reporting units with the carriage of goods and passengers in maritime transport prevailing activity (Section H, field 50); (viii) report on the arrival and departure of ships reporting units are the Port Authority and Administration for maritime safety and port management; (ix) reloading the reporting unit which is engaged manipulating freight (shipping in ships and unloading from them) core business (Section H, field 52); (x) postal and telecommunications traffic reporting unit is Agency for electronic communications and postal service; (xi) Source data for the number of road traffic accidents is Montenegro police directorate and the number of registered road motor vehicles and trailers Ministry of Interior of Montenegro.

1.4 Coverage and scope of survey

1.4.1 Sectors

Section H (KD 2010), divisions 49, 50, 51, 52, 53 and Section J divisions 61.

1.4.2 Statistical population

Units for all surveys of transport, except survey of freight road transport, are enterprises. For freight road transport units are in addition to enterprises and natural persons who are owners/users of road vehicle payload 3 500 kg or larger and unit.

1.5 Referent geographical area

Territory of Montenegro

1.6 Concepts and definitions

Transport is the movement of passengers and goods and from place of loading to place of unloading. Passenger is every person with ticket or appropriate document with the aim to travel to desired place. Passenger kilometre presents the transport of one person over the distance of 1 km. Goods transported are goods transferred based on the contract on transport. The quantity of goods transported is expressed in gross weight, meaning that the quantity of goods covers also the quantity of packaging or packing material (containers). Tonne-kilometres indicate transport of one-tonne goods over the distance of 1 km. Trans-shipped tons of cargo related to the total amount of cargo that passes through the transshipment business entity, where the same load, regardless of the number of manipulations that it has executed, shown only once. Manipulated tons are a unit of performance that expresses the sum of operations registered by kind that are made (unloading, loading, reloading the direct transfer). Postal service is a service of receiving, processing, transfer and delivering letter mails in accordance with accepted standards. Letter is a type of communication in written form on paper or other appropriate data carrier, which must be sent and delivered to the address indicated by the sender on the item or letter cover. The package is a postal consignment containing goods and items. Other printed papers are printed publications issued by the publisher of a daily, occasionally or in a given period (newspapers and magazines). Telecommunication services cover transfer of voice, data, text, and sound, and video material by the transmission equipment based on single technology or combination of several technologies. Fixed telecommunication is services providing to users the access to public fixed network at the fixed location, and the use of public accessible telephone service at the fixed location. Mobile telecommunication is services providing to users the access to public mobile network, and the use of mobile telecommunication services. Traffic accident is an event that occurred on the road or the start on the road, which was attended by at least one vehicle in motion and in which one or more persons injured or killed or died within 30 days of the result of the traffic accident or result damage to property. Registered road motor vehicle and trailer are all vehicles registered in the Ministry of Interiors, except military vehicles. For the first time registered vehicles include: new and imported vehicles, i.e. vehicles with the first-time registration in Montenegro. Road transport is any movements of goods and/or passengers using a road vehicle on a given road network. National road transport is transport between two places (a place of loading and a place of unloading) located in the same country in which the vehicle is registered. International road transport is transport between two places (a place of loading and a place of unloading) in two different countries. It may involve transit through one or more additional country or countries. Cross-trade road transport is international road transport performed by a road motor vehicle registered in a third country. Transport for hire or reward is the carriage for remuneration, of persons or goods, on behalf of third parties. Transport on own account is transport which is not for hire or reward. Goods road motor vehicle is

any single road motor vehicle designed to carry goods (lorry), or any coupled combination of road vehicles designed to carry goods, (i.e. lorry with trailer(s), or road tractor with semitrailer and with or without trailer). Road tractor is road motor vehicle designed, exclusively or primarily, to haul other road vehicles without engines.

1.7 Classifications

NACE Rev.2 NST 2007 classification of goods

1.8 Frequency of data collection

Annual

1.9 Frequency of data dissemination

Annual

1.10 Methodology

The methodology is available on the website:

http://monstat.org/userfiles/file/saobracaji/2016/Transport%20stataistiss_Methodology_EN.pdf

1.11 Base period

Previous year

1.12 Unit of measure

Passengers carried, passenger kilometres, goods in tonnes and tonne miles, the number of registered road motor vehicles and trailers, the number of first-time registered road motor vehicles and trailers, the number of registered road motor vehicles and trailers according to year, the number of traffic accidents and number of persons killed and persons injured in road traffic accidents, reloaded tons, manipulated tones, inventory state of transshipment. Postal network and means of transport. Postal services: letters, packages, printed matter; Statistics of subscribers in telecommunications network. Telecommunication services: minutes spent in fixed telephony, spent minutes of mobile telephony. Length of railway lines, railway stations and other official places, the length of the road network, inventory and state transportation means in road passenger transport and road local passengers transport, maritime and air transport. Airport surfaces and means to work at airports

1.13 Source of data

Data source: (i) for rail transport are reporting units with the carriage of passengers and goods by rail prevailing activity (Section H, field 49); (ii) road passenger traffic reporting units with the carriage of passengers in road traffic prevailing activity (Section H, field 49); (iii) road freight transport vehicles for transportation of goods payload of 3500 kg and higher, as well as tractors. Sources of data are legal and natural persons who are owners or users of vehicles. Data source for road vehicles is the Ministry of Interior of Montenegro; (iv) local road traffic reporting units with the carriage of passengers in local road (urban) traffic prevailing activity (Section H, field 49); (v) traffic at airports reporting units that perform service activities in air traffic (Section H, field 52); (vi) air traffic reporting units which operate in air traffic (Section H, field 51); (vii) maritime traffic reporting units with the carriage of goods and passengers in maritime transport prevailing activity (Section H, field 50); (viii) report on the arrival and departure of ships reporting units are the Port Authority and Administration for maritime safety and port management; (ix) reloading the reporting unit which is engaged manipulating freight

(shipping in ships and unloading from them) core business (Section H, field 52); (x) postal and telecommunications traffic reporting unit is Agency for electronic communications and postal service; (xi) Source data for the number of road traffic accidents is Montenegro police directorate and the number of registered road motor vehicles and trailers Ministry of Interior of Montenegro.

1.14 Method of collection data

Transport data are collected through regular quarterly and annual surveys, data collection apply to reporting methods, (questionnaires are delivered by mail or post), in addition to study on freight road transport used for polls methods.

2. Relevance – Data users

2.1 User needs

International users:

- ✚ Eurostat,
- ✚ World Bank,
- ✚ UN organizations,
- ✚ International Monetary Fund

National users:

- ✚ Ministries and other public administration bodies,
- ✚ Local government, and other local government bodies.
- ✚ Non-governmental organizations,
- ✚ Students,
- ✚ Researchers,
- ✚ Media.

2.2 User satisfaction

The Statistical Office has adopted the Quality Management Strategy, the Guidebook to the Implementation of the Quality Management Strategy, as well as the Plan for the Implementation of the Quality Policy. In order to measure the degree to which fulfils obligations towards users and within the new quality policy, the Statistical Office conducted User satisfaction survey. The results of the survey are available on the Statistical Office website, link: [User satisfaction report](#)

3. Accuracy and reliability

3.1 Accuracy – Overall remark

Not relevant.

3.2 Sampling error

Not relevant.

Indicators of sampling error

Not relevant.

3.3 Non-sampling error

Not relevant.

3.3.1 Coverage error

Not relevant.

Indicators of coverage error

Not relevant.

3.3.2 Error of measurement

Not relevant.

3.3.3 Non-response error

n/a

Unit non- response rate

Non-response rate

n/a

3.3.4 Data processing error

n/a

Imputation rate

n/a

3.4 Seasonal adjustment

Not relevant.

3.5 Data revision

3.5.1 Data revision policy

Statistical Office has adopted the revision policy and it is available on the website: [Revision policy](#)

3.5.2 Data revision practice

The subject of regular revision is preliminary data.

3.5.3 Data revision - average size

Not relevant.

4. Timeliness and punctuality

4.1 Timeliness

Data are published according to the Statistical Data Release Calendar (5 months after the end of the reference period).

Time lag of the first results

Preliminary data are published according to the Statistical Data Release Calendar (4 months after the end of the reference period).

Time lag of the final results

Final data are published 5 months after the end of the reference period in accordance with the Statistical Release Calendar.

4.2 Punctuality

Deadlines accordance with the Statistical Data Release Calendar.

5. Availability and clarity

5.1 Statistical Release Calendar

The Law on Official Statistics and Official Statistical System (Official Gazette of Montenegro No 18/12, 47/19) stipulates that official statistical producers prepare, update, and publish Statistical Release Calendar. It is published on the website of Statistical Office not later than 20 December for the next year, for all official statistical producers that includes date of releasing statistical data. Any change in date of releasing in the Calendar is published in advance in accordance with the Procedure on Unplanned Revisions.

5.2 Access the data release calendar

The calendar of data publication is available on the following link: [Release Calendar](#)

5.3 Release

Annual data available in the regular publication in the Publications section: [Annual transport statistics](#)

5.4 Publication

All publications published by the Statistical office of Montenegro are available at the link: [Publication](#)

5.5 On-line database

[Database](#)

5.6 Availability of microdata

The Law on Official Statistics and Official Statistical System (Official Gazette of Montenegro No 18/12 and 47/19) regulates rules under which external users can obtain an access to individual data for needs of research. Article 58 defines types of scientific and research organizations that can obtain such data. Providing individual data without identifier is possible only upon a written request of scientific and research institutions, with purpose of performing scientific and research activities as well as international statistical organizations and statistical producers from other countries. Research entity signs the agreement with Statistical Office, and it signs the statement on respecting the confidentiality principle. Official statistical producers keep a separate record on users and purpose of using the statistical data given to these users.

5.7 Metadata occupancy

Not available

6. Comparability

6.1 Comparability - geographical

Not relevant

6.2 Comparability - over time

Data on transport are comparable, time series available since 2010 in electronic format, and located at: [Data](#)