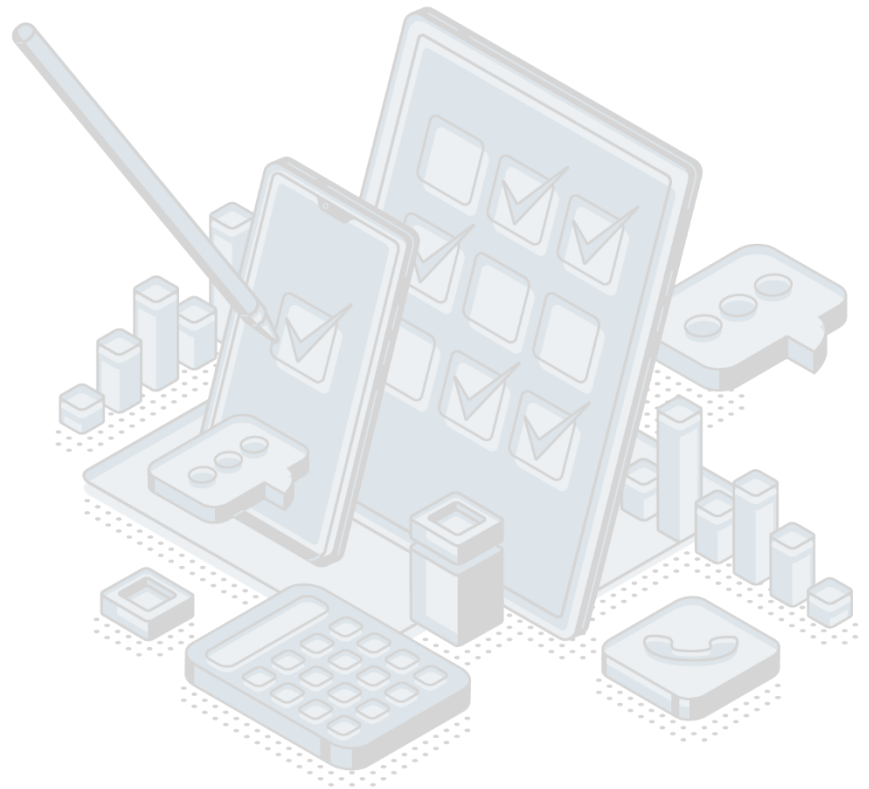


QUALITY REPORT

External Debt of Montenegro 2024



Responsible persons: CBCG-Marijana Mitrovic Mijatovic

Department: Sector for Financial Stability and Research and Statistics

Table of contents:

1. Introduction – Basic information about the survey	Error! Bookmark not defined.
1.1 Purpose, goal and subject of the survey	Error! Bookmark not defined.
1.2 Legal basis.....	Error! Bookmark not defined.
1.3 Statistical units	Error! Bookmark not defined.
1.4 Coverage and scope of survey.....	Error! Bookmark not defined.
1.4.1 Sectors	Error! Bookmark not defined.
1.4.2 Statistical population	Error! Bookmark not defined.
1.5 Referent geographical area.....	Error! Bookmark not defined.
1.6 Concepts and definitions.....	Error! Bookmark not defined.
1.7 Classifications	Error! Bookmark not defined.
1.8 Frequency of data collection.....	Error! Bookmark not defined.
1.9 Frequency of data dissemination	Error! Bookmark not defined.
1.10 Methodology	Error! Bookmark not defined.
1.11 Base period	Error! Bookmark not defined.
Not relevant.	Error! Bookmark not defined.
1.12 Unit of measure	Error! Bookmark not defined.
Number of death persons.	Error! Bookmark not defined.
1.13 Source of data	Error! Bookmark not defined.
1.14 Method of collection data.....	Error! Bookmark not defined.
2. Relevance – Data users	Error! Bookmark not defined.
2.1 User needs	Error! Bookmark not defined.
2.2 User satisfaction	Error! Bookmark not defined.
3. Accuracy and reliability	Error! Bookmark not defined.
3.1 Accuracy – Overall remark	Error! Bookmark not defined.
3.2 Error of measurement.....	Error! Bookmark not defined.
3.3 Data revision	Error! Bookmark not defined.
3.3.1 Data revision policy	Error! Bookmark not defined.
3.3.2 Data revision practice.....	Error! Bookmark not defined.
3.3.3 Data revision - average size	Error! Bookmark not defined.
4. Timeliness and punctuality	Error! Bookmark not defined.
4.1 Timeliness.....	Error! Bookmark not defined.
Time lag of the first results.....	Error! Bookmark not defined.
4.2 Punctuality of data publication.....	Error! Bookmark not defined.
5. Availability and clarity	Error! Bookmark not defined.
5.1 Statistical Release Calendar	Error! Bookmark not defined.
5.2 Access the data Release Calendar	Error! Bookmark not defined.
5.3 Releases	Error! Bookmark not defined.
5.4 Publications	Error! Bookmark not defined.
5.5 Online database.....	Error! Bookmark not defined.
5.6 Availability of microdata.....	Error! Bookmark not defined.
5.7 Metadata completeness	Error! Bookmark not defined.
6. Comparability	Error! Bookmark not defined.
6.1 Comparability - geographical.....	Error! Bookmark not defined.
6.2 Comparability - over time.....	Error! Bookmark not defined.

1. Introduction – Basic information about the survey

1.1 Purpose, goal and subject of the survey

Gross external debt represents the total debt of the public and private sectors of a country towards foreign creditors (non-residents). The external debt represents outstanding debt liabilities at a given date, including all outstanding liabilities arising from principal and interest

1.2 Legal basics

National regulation: Pursuant to the Law on Official Statistics and Statistical Systems (OGM 18/12, 04/19) the Central bank of Montenegro is the compiler of statistics about the external debt of Montenegro. Data collection and compilation is in accordance with the Law on the Central Bank of Montenegro (OGRM 40/10, 6/13, 70/17, 125/23), the Law on Foreign Current and Capital Operations (OGRM 45/05, and OGM 62/08, 40/11, 62/13, 70/17) and the Decision on keeping separate records on foreign current and capital transactions and their reporting to the Central Bank of Montenegro (OGM 8/17, 18/19).

International regulation: Balance of Payments and International Investment Manual - BPM6, External Debt Statistics: Guide for Compilers and Users (EDS), Regulation (EC) No 1842005 of the European Parliament and of the Council of 12 January 2005 on Community statistics concerning balance of payments, international trade in services and foreign direct investment; Regulation (EU) No 5552012 of 22 June 2012 amending Regulation (EC) No 184/2005 of the European Parliament and of the Council on Community statistics concerning balance of payments, international trade in services and foreign direct investment, as regards the update of data requirements and definitions; Regulation (EU) 2016/1013 of the European Parliament and of the Council of 8 June 2016 amending Regulation (EC) No 184/2005 on Community statistics concerning balance of payments, international trade in services and foreign direct investment.

1.3 Statistical units

Resident s sectors (CBM, banks, general government and other sectors) having debt liabilities to non-residents.

1.4 Coverage and scope of survey

1.4.1 Sectors

The data shall be submitted to Central Bank of Montenegro by the following residents: legal persons, subsidiaries of foreign companies registered in the register of the competent authority in Montenegro, entrepreneurs and natural persons

1.4.2 Statistical population

All residents that have debt liabilities to non-residents in accordance with BPM6 and EDS.

1.5 Referent geographical area

Montenegro

1.6 Concepts and definitions

In accordance with international standards (BPM6, EDS).

1.7 Classifications

Classification in accordance with Balance of Payments and International Investment Position Manual, sixth edition, IMF (BPM6) and External Debt Statistics-Guide for Compilers and Users, IMF (EDS)

1.8 Frequency of data collection

The data are annually collected up to 2016, and on quarterly 2017 onward.

1.9 Frequency of data dissemination

Quarterly

1.10 Methodology

CBCG web site (<https://www.cbcg.me/en/statistics/statistical-data/international-economic-relations/external-debt-of-montenegro>)

1.11 Base period

Attn.

1.12 Unit of measure

EUR (thousands)

1.13 Source of data

The main data sources are: the direct reporting by enterprises, statistics compiled within the CBCG (balance of payments and monetary statistics), administrative sources of data (Ministry of Finance and Social Welfare, IMF), and estimates.

1.14 Method of collection data

Direct reporting by companies, administrative sources, estimations

2. Relevance – Data users

2.1 User needs

National users: Monstat, ministries and other institutions of public administration, researchers, media and others. International users: IMF, World bank, Eurostat, foreign embassies, researchers and other.

2.2 User satisfaction

Attn.

3. Accuracy and reliability

3.1 Accuracy - overall

Attn.

3.2 Sampling error

Attn.

Indicators of sampling error (A1)

Attn.

3.3 Non-sampling error

Attn.

3.3.1 Coverage error

Attn.

Indicators of coverage error (A2)

Attn.

3.3.2 Error of measurement

Attn.

3.3.3 Non response error

Attn.

Unresponsive unit rate (A3)

Attn.

Non response rate

Attn.

3.3.4 Error processing the data

Attn.

Imputation rate

Attn.

3.4 Seasonal adjustment

Attn.

3.5 Data revision

3.5.1 Data revision policy

Revisions are made for the current and previous years. Data are also revised ad hoc whenever additional information becomes available. In case of significant revisions, it is noted in publications with an explanation of the circumstance under which the revision is made.

3.5.2 Data revision practice

There is always a note in the published tables indicating preliminary data. Also, the revisions are noted in publications.

3.5.3 Data revision - average size (A6)

4. Timeliness and punctuality

4.1 Timeliness

Attn.

Time lag of the first results

Data is published in line with the release calendar.

Time lag of the final results

t+9 months

4.2 Punctuality

The data is published in line with the release calendar

Attn.

5. Availability and clarity

5.1 Statistical Release Calendar

Data are published in accordance with the date defined in the official release Calendar. The calendar is publicly available.

5.2 Access the data Release Calendar

<https://www.cbcg.me/en/statistics/release-calendar>

5.3 Releases

Attn.

5.4 Publication

Quarterly and Annual Macroeconomic Report (<https://www.cbcg.me/en/publications/regular-publications>)

5.5 On-line databas

Attn.

5.6 Access to micro data

Attn.

5.7 Metadata occupancy

Attn.

6. Comparability

6.1 Spatial comparability

The data comparability is ensured by applying international standards and methodology (BPM6, EDS).

6.2 Time comparability

The data are available and comparable since 2010.

Time comparability indicator

Attn.