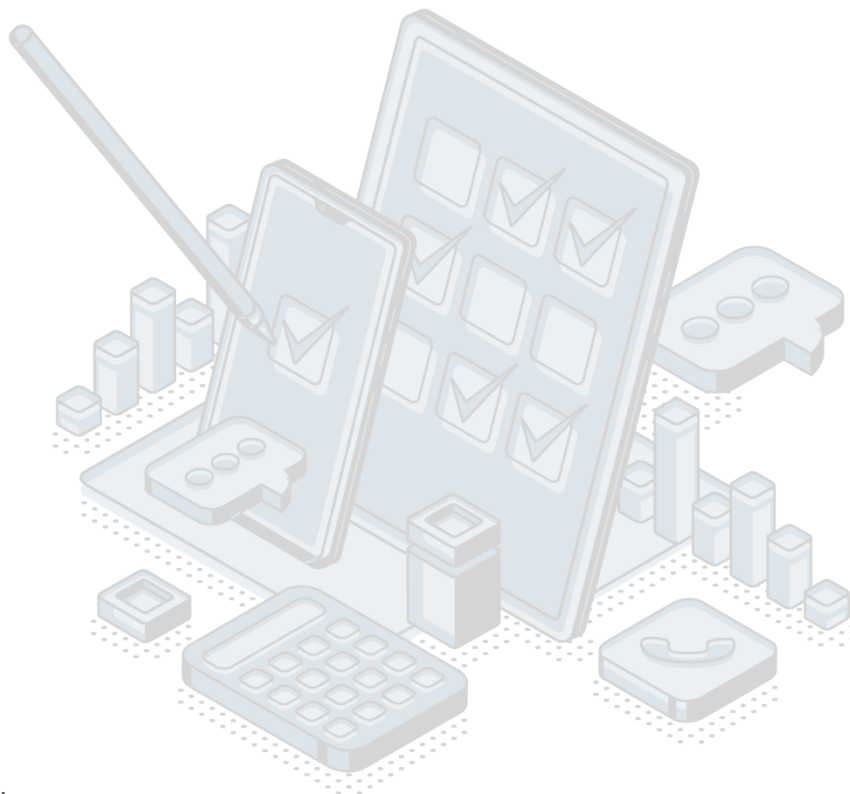


## QUALITY REPORT

### Production of forest assortments in state forests for 2022



**Responsible person:** Andrijana Babic

**Department:** Environmental Statistics and Forestry Department

**Table of contents:**

<b>1. Introduction – Basic information on survey .....</b>	<b>3</b>
1.1 Purpose, goal, and subject of survey .....	3
1.2 Legal basis.....	3
1.3 Statistical units .....	3
1.4 Coverage and scope of survey .....	3
1.4.1 Sectors .....	3
1.4.2 Statistical population.....	3
1.5 Reference geographical area.....	3
1.6 Concepts and definitions.....	3
1.7 Classifications.....	4
1.8 Frequency of data collection .....	4
1.9 Dynamics of data collection .....	4
1.10 Methodology .....	4
Not available.....	4
1.11 Base period.....	4
1.12 Unit of measure.....	4
1.13 Data source.....	4
1.14 Method of data collection .....	4
<b>2. Relevance – data users.....</b>	<b>4</b>
2.1 User needs .....	4
2.2 User satisfaction .....	5
<b>3. Accuracy and reliability .....</b>	<b>5</b>
3.1 Accuracy – overall.....	5
3.3.2 Measurement error .....	5
3.3.3 Non-response error .....	5
Unit nonresponse rate.....	5
Item nonresponse rate .....	5
3.3.4 Data processing error .....	5
Imputation rate .....	5
3.4 Seasonal adjustment .....	5
3.5 Data revision .....	6
3.5.1 Data revision policy .....	6
3.5.2 Data revision practice .....	6
3.5.3 Data revision - average size .....	6
<b>4. Timeliness and punctuality .....</b>	<b>6</b>
4.1 Timeliness.....	6
Time lag of preliminary results .....	6
Time lag of final data.....	6
<b>5. Availability and clarity .....</b>	<b>6</b>
5.1 Statistical Release Calendar.....	6
5.2 Access to Statistical Release Calendar .....	6
5.3 Releases.....	6
5.4 Publications .....	7
5.5 Online database.....	7
5.6 Access to microdata.....	7
5.7 Metadata occupancy.....	7
<b>6. Comparability .....</b>	<b>7</b>
6.1 Spatial comparability.....	7
6.2 Time comparability.....	7

## **1. Introduction – Basic information on survey**

### **1.1 Purpose, goal, and subject of survey**

The purpose of the Survey Production of forest assortments in state forests is to provide data on production, sales and stock of forest assortments in state forests.

### **1.2 Legal basis**

The Law on Official Statistics and Official Statistical System (Official Gazette of Montenegro No 18/12 and 47/19) defines provisions for collection, processing, and dissemination of data. The Law provides to the Statistical Office clear and wide legal powers to collect and access the data necessary for the implementation of Programme and Annual Plan. The Law gives a priority to the use of administrative data and right of access to individual data that are a result of survey of other official statistical producers. As an annex to legal provisions, Statistical Office has signed several memoranda on cooperation with administrative data providers.

### **1.3 Statistical units**

The observation units are: Business entities that carry out the production of forest assortments in the state forests, i.e. local units of the Forest Administration.

### **1.4 Coverage and scope of survey**

#### **1.4.1 Sectors**

Sector A - Agriculture, forestry and fishery.

#### **1.4.2 Statistical population**

Reporting units are all business entities classified in the sector A - agriculture, forestry and fishery according to the Classification of Activities 2010, and they carry out the production of forest assortments in the state forests.

### **1.5 Reference geographical area**

Montenegro

### **1.6 Concepts and definitions**

Forest is considered to be land overgrown with forest trees in the form of a stand with an area of more than 20 acres, as well as forest nurseries, seed stands and seed plantations that are an integral part of the forest, forest infrastructure, fire lines and other open areas within the forest area less than 20 acres. Separate groups of forest trees on an area of less than 20 acres, forest nurseries and seed plantations that are not an integral part of the forest, protective belts of forest trees with an area of less than 20 acres and a width of less than 20 m, tree lines and parks in settlements are not considered forests. Industrial wood has favourable physical and chemical characteristics and is intended for industrial (mechanical and chemical) processing. Technical wood has favourable physical and chemical characteristics and is intended for various technical purposes. Firewood is wood cut in order to be used for fire or charcoal production.

## **1.7 Classifications**

NACE Rev 2.

## **1.8 Frequency of data collection**

Data are collected monthly.

## **1.9 Dynamics of data collection**

Data dissemination frequency is monthly, quarterly and annually.

## **1.10 Methodology**

Not available.

## **1.11 Base period**

Not relevant.

## **1.12 Unit of measure**

m<sup>3</sup>.

## **1.13 Data source**

Data are collected from business entities that carry out the production of forest assortments in the state forests, i.e. local units of the Forest Administration.

## **1.14 Method of data collection**

Reporting method is used for data collection.

# **2. Relevance – data users**

## **2.1 User needs**

International users:

- ✚ Eurostat;
- ✚ World Bank;
- ✚ UN organizations;
- ✚ International Monetary Fund

National users:

- ✚ Ministries and other public administration bodies;
- ✚ Local government and other local government bodies;
- ✚ Central bank;
- ✚ Non-governmental organizations;

- ✚ Students;
- ✚ Researchers;
- ✚ Media.

## 2.2 User satisfaction

The Statistical Office has adopted the Quality Management Strategy, the Guidebook to the Implementation of the Quality Management Strategy, as well as the Plan for the Implementation of the Quality Policy. In order to measure the degree to which fulfils obligations towards users and within the new quality policy, the Statistical Office conducted User satisfaction survey. The results of the survey are available on the Statistical Office website, link:

[https://www.monstat.org/uploads/files/O%20NAMA/2.%20Izvestaj%20o%20zadovoljstvu%20korisnika%20-%202022\\_FINAL\(1\).pdf](https://www.monstat.org/uploads/files/O%20NAMA/2.%20Izvestaj%20o%20zadovoljstvu%20korisnika%20-%202022_FINAL(1).pdf)

## 3. Accuracy and reliability

### 3.1 Accuracy – overall

Survey Production of forest assortments in state forests includes business entities that carry out the production of forest assortments in the state forests and the data are obtained by the reporting method, so they are subject to the usual types of errors - mistakes in processing and non-response. In order to prevent the occurrence of errors, appropriate actions are taken to identify and eliminate potential sources of error.

#### 3.3.2 Measurement error

Eventual errors of measurement are corrected based on logic-numeric controls and validation of the process.

#### 3.3.3 Non-response error

Not available.

##### *Unit nonresponse rate*

Not available.

##### *Item nonresponse rate*

Not available.

#### 3.3.4 Data processing error

Not available.

##### *Imputation rate*

Not available.

### 3.4 Seasonal adjustment

Not relevant.

### 3.5 Data revision

#### 3.5.1 Data revision policy

Statistical Office has adopted the revision policy and it is available on the website: <http://www.monstat.org/eng/page.php?id=1411&pageid=3>

#### 3.5.2 Data revision practice

Not available.

#### 3.5.3 Data revision - average size

Not relevant.

## 4. Timeliness and punctuality

### 4.1 Timeliness

According to the Annual Plan of Official Statistics and Statistical Release Calendar, data for the Survey Production of forest assortments in state forests are collected each month for the previous month, and they are published at the end of each month, quarter and year.

#### *Time lag of preliminary results*

Not available.

#### *Time lag of final data*

Not available.

## 5. Availability and clarity

### 5.1 Statistical Release Calendar

The Law on Official Statistics and Official Statistical System ("Official Gazette of Montenegro" No 18/12 and 47/19) stipulates that official statistical producers prepare, update, and publish Statistical Release Calendar. It is published on the website of Statistical Office not later than 20 December for the next year, for all official statistical producers that includes date of releasing statistical data. Any change in date of releasing in the Calendar is published in advance in accordance with the Procedure on Unplanned Revisions.

### 5.2 Access to Statistical Release Calendar

[http://monstat.org/uploads/files/O%20NAMA/Kalendar%20objavljivanja%20statističkih%20podataka%20za%202021.%20godinu%20%20ENG%20-%20za%20web%20sajt\(1\).pdf](http://monstat.org/uploads/files/O%20NAMA/Kalendar%20objavljivanja%20statističkih%20podataka%20za%202021.%20godinu%20%20ENG%20-%20za%20web%20sajt(1).pdf)

### 5.3 Releases

Data obtained through Survey Production of forest assortments in state forests are published every quarter in the form of a release:

<https://www.monstat.org/eng/page.php?id=1779&pageid=65>

## **5.4 Publications**

Statistical Office publishes the following regular publications: 1. Monthly Statistical Review 2. Statistical Yearbook; 3. Montenegro in Numbers. All publication published by Statistical Office are available at the following link: <http://monstat.org/eng/publikacije.php>.

## **5.5 Online database**

On line data base for the Report on production of forest assortments in state forests is available on the following link:

<http://bazapodataka.monstat.org/PXWebEng/pxweb/en/Forestry%20and%20environment/?rxid=ae467ae8-9c24-47ef-a579-3161229d8a81>

## **5.6 Access to microdata**

The Law on Official Statistics and Official Statistical System (Official Gazette of Montenegro No 18/12 and 47/19) regulates rules under which external users can obtain an access to individual data for needs of research. Article 58 defines types of scientific and research organizations that can obtain such data. Providing individual data without identifier is possible only upon a written request of scientific and research institutions, with purpose of performing scientific and research activities as well as international statistical organizations and statistical producers from other countries. Research entity signs the agreement with Statistical Office, and it signs the statement on respecting the confidentiality principle. Official statistical producers keep separate records on users and purpose of using the statistical data given to these users.

## **5.7 Metadata occupancy**

Not available.

# **6. Comparability**

## **6.1 Spatial comparability**

Not available.

## **6.2 Time comparability**

The data are completely comparable.