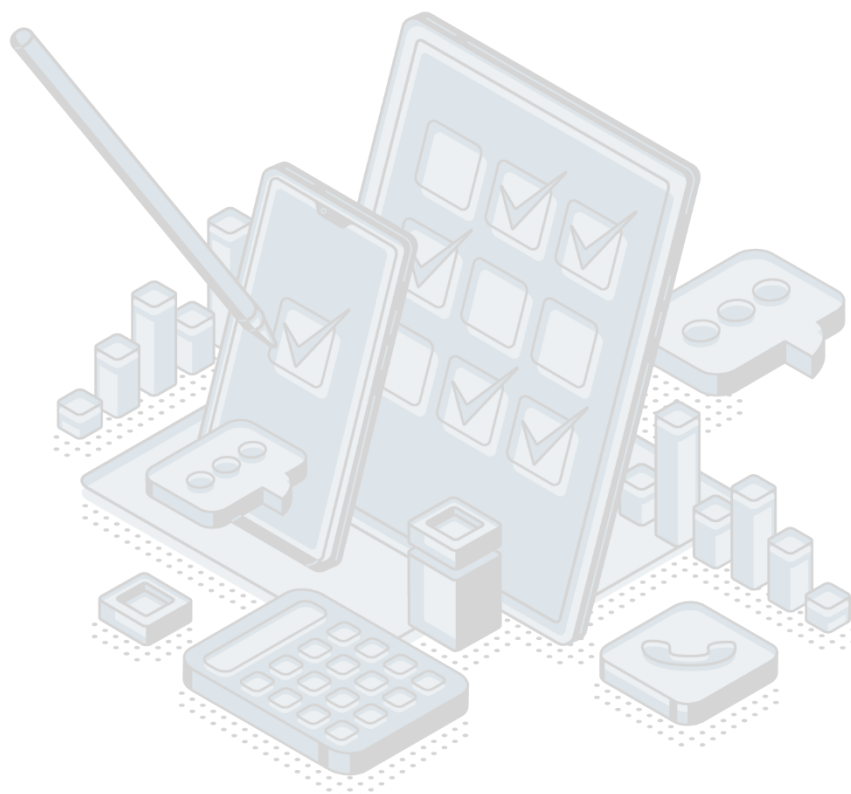


## QUALITY REPORT

### Internal migration 2024



**Responsible person:** Zdenka BRAJOVIC

**Department:** Demography and Migration Statistics Department

## Contents

<b>1. Introduction – Basic information about the survey .....</b>	<b>3</b>
1.1 Purpose, goal and subject of the survey .....	3
1.2 Legal basis.....	3
1.3 Statistical units .....	3
1.4 Coverage and scope of survey.....	3
1.4.1 Sectors .....	3
1.4.2 Statistical population .....	3
1.5 Referent geographical area.....	3
1.6 Concepts and definitions.....	3
1.7 Classifications .....	3
1.8 Frequency of data collection.....	3
1.9 Frequency of data dissemination .....	4
1.10 Methodology .....	4
1.11 Base period .....	4
1.12 Unit of measure .....	4
1.13 Source of data .....	4
1.14 Method of collection data.....	4
<b>2. Relevance – Data users .....</b>	<b>4</b>
2.1 User needs .....	4
2.2 User satisfaction .....	4
<b>3. Accuracy and reliability .....</b>	<b>5</b>
3.1 Accuracy – Overall remark .....	5
3.2 Error of measurement.....	5
3.2.1 Error of non response .....	5
3.3 Seasonal adjustment.....	5
3.4 Data revision .....	5
3.4.1 Data revision policy .....	5
3.4.2 Data revision practice.....	5
3.4.3 Data revision - average size .....	5
<b>4. Timeliness and punctuality.....</b>	<b>5</b>
4.1 Timeliness.....	5
4.2 Punctuality of data publication.....	6
<b>5. Availability and clarity.....</b>	<b>6</b>
5.1 Statistical Release Calendar .....	6
5.2 Access the data Release Calendar .....	6
5.3 Releases .....	6
5.4 Publications .....	6
5.5 Online database.....	6
5.6 Availability of microdata.....	6
5.7 Metadata completeness .....	6
<b>6. Comparability .....</b>	<b>6</b>
6.1 Comparability - geographical.....	6
6.2 Comparability - over time .....	7

## **1. Introduction – Basic information about the survey**

### **1.1 Purpose, goal and subject of the survey**

The objective of internal migration statistics is to obtain the data needed for the analysis of the mechanical movement of the population. These statistics are used in statistics to calculate the estimated number of population as well as to calculate net migrations showing population change in municipalities in Montenegro. Internal migration data is available by age and gender of migrants, at the level of municipalities and Montenegro.

### **1.2 Legal basis**

The Law on Official Statistics and Official Statistical System (Official Gazette of Montenegro No 18/12 from 30 March 2012, 047/19 from 12 August 2019) defines provisions for collection, processing, and dissemination of data. The Law provides to the Statistical Office legal powers to collect and access the data necessary for the implementation of Programme and Annual Plan. The Law gives a priority to the use of administrative data and right of access to individual data that are a result of survey of other official statistical producers. As an annex to legal provisions, in 2009, Statistical Office has signed Agreement on cooperation in the field of internal migration statistics with the Ministry of the Interior, as administrative data provider.

### **1.3 Statistical units**

Person who changes a place of residence in the territory of Montenegro.

### **1.4 Coverage and scope of survey**

#### **1.4.1 Sectors**

Not relevant.

#### **1.4.2 Statistical population**

Migrants - all persons who apply/cancel residence from Register of residence leading by Ministry of Interior.

### **1.5 Referent geographical area**

Montenegro and municipalities.

### **1.6 Concepts and definitions**

Migration or moving of population is spatial movement of population from previous place of residence to other place. Migrant is a person who changed place of residence within borders of Montenegro. Moved-in person is person who registered place of residence in certain place in Montenegro and her/his previous place of residence was in some other place in Montenegro. Move-out person is a person who cancelled residence from certain place in Montenegro with the intention to register it in some other place in Montenegro. Migration population balance (net migration) is difference between number of immigrated and number of emigrated persons from certain areas or certain countries in some period of time. If number of immigrated is higher than number of emigrated persons we talk about positive migration balance, actually increase of number of population, and if there is more persons who moved out than immigrated, here it is about negative migration balance, i.e. decrease of number of population of given area or state.

### **1.7 Classifications**

Municipality.

### **1.8 Frequency of data collection**

Monthly (annual service)

## 1.9 Frequency of data dissemination

- Monthly, preliminary data
- Annual, final data

## 1.10 Methodology

The methodology on internal migration statistics is available on the web site:

<https://www.monstat.org/eng/page.php?id=1272&pageid=53>

## 1.11 Base period

Not relevant.

## 1.12 Unit of measure

Number of persons who migrate

## 1.13 Source of data

Administrative source - register of residence.

## 1.14 Method of collection data

Administrative method of data collection.

# 2. Relevance – Data users

## 2.1 User needs

International users:

- ✚ Eurostat;
- ✚ World Bank;
- ✚ UN organizations;
- ✚ International Monetary Fund.

National users:

- ✚ Ministries and other public administration bodies;
- ✚ Local government, and other local government bodies;
- ✚ Central bank;
- ✚ Non-governmental organizations;
- ✚ Students;
- ✚ Researchers;
- ✚ Media.

## 2.2 User satisfaction

The Statistical Office has adopted the Quality Management Strategy, the Guidebook to the Implementation of the Quality Management Strategy, as well as the Plan for the Implementation of the Quality Policy. In order to measure the degree to which fulfills obligations towards users and within the new quality policy, the Statistical Office conducted User satisfaction survey. The results of the survey are available on the Statistical Office website, link:

[http://monstat.org/uploads/files/2.%20Izvestaj%20o%20zadovoljstvu%20korisnika%20ENG%20\(Autosaved\).pdf](http://monstat.org/uploads/files/2.%20Izvestaj%20o%20zadovoljstvu%20korisnika%20ENG%20(Autosaved).pdf)

### 3. Accuracy and reliability

#### 3.1 Accuracy – Overall remark

Having in mind that the data source is administrative, all reported cases of residence change are covered, which provides a high level of accuracy.

#### 3.2 Error of measurement

Not relevant.

##### 3.2.1 Error of non-response

Not relevant.

#### 3.3 Seasonal adjustment

Not relevant.

#### 3.4 Data revision

##### 3.4.1 Data revision policy

Statistical Office has adopted the revision policy and it is available on the website <http://www.monstat.org/eng/page.php?id=1411&pageid=1411>

##### 3.4.2 Data revision practice

Annual plan foreseen preliminary and final announcement of data. According to this, a regular revision is applied for this survey.

##### 3.4.3 Data revision - average size

Not available.

### 4. Timeliness and punctuality

#### 4.1 Timeliness

The final results are published no later than 90 days after the expiration of the reference period (T + 90).

The release announcement calendar is available at:

<https://www.monstat.org/eng/page.php?id=12&pageid=12>

For 2022 data are published on 21 March 2022.

##### *Time lag of the first results*

Preliminary data shall be published no later than 31 (T + 31) days after the expiration of the reference period.

##### *Time lag of the final results*

Final results are published no later than 90 days after the expiration of the reference period (T + 90).

## 4.2 Punctuality of data publication

Data are published on the day defined by the Annual Plan and Statistical Releases Calendar. Indicator TP3 is 0, i.e. there is no difference between planned and actual announcement.

## 5. Availability and clarity

### 5.1 Statistical Release Calendar

The Law on Official Statistics and Official Statistical System (Official Gazette of Montenegro No 18/12 from 30 March 2012, 047/19 from 12 August 2019) stipulates that official statistical producers prepare, update, and publish Statistical Release Calendar. It is published on the website of Statistical Office not later than 20 December for the next year, for all official statistical producers that includes date of releasing statistical data. Any change in date of releasing in the Calendar is published in advance in accordance with the Procedure on Unplanned Revisions.

### 5.2 Access the data Release Calendar

Statistical Release Calendar is available on the following link:

<https://www.monstat.org/eng/page.php?id=12&pageid=12>

### 5.3 Releases

Releases are published once a year and are available on the website at the link:

<https://www.monstat.org/eng/page.php?id=1295&pageid=53>

### 5.4 Publications

All publications published by the Statistical Office are available at the following link:

<https://www.monstat.org/eng/publikacije.php>

### 5.5 Online database

Not available.

### 5.6 Availability of microdata

The Law on Official Statistics and Official Statistical System (Official Gazette of Montenegro No 018/12 and 047/19) regulates rules under which external users can obtain an access to individual data for needs of research. Article 58 defines types of scientific and research organizations that can obtain such data. Providing individual data without identifier is possible only upon a written request of scientific and research institutions, with purpose of performing scientific and research activities as well as international statistical organizations and statistical producers from other countries. Research entity signs the agreement with Statistical Office, and it signs the statement on respecting the confidentiality principle. Official statistical producers keeps a separate records on users and purpose of using the statistical data given to these users.

### 5.7 Metadata completeness

Not available.

## 6. Comparability

### 6.1 Comparability - geographical

Not relevant.

## 6.2 Comparability - over time

A comparable time series of data is available since 2006.

### *Indicator for comparability over time*

Not available.